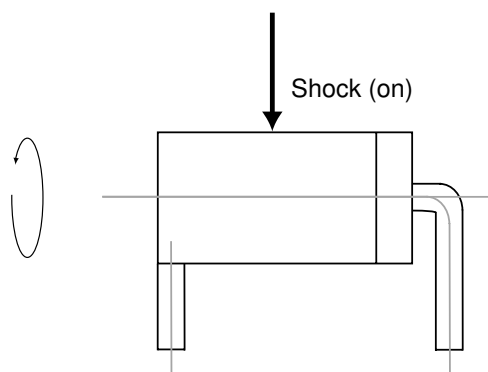
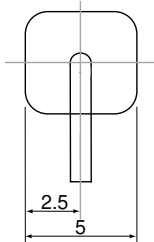
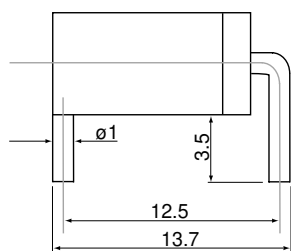


Comus Group of Companies

PRODUCT DATA SHEET



Drawings not to scale
All dimensions in mm nominal

SPECIFICATION

CONTACT FORM / STYLE	Normally Open (NO)
SWITCHING VOLTAGE	24Vdc
SWITCHING CURRENT	25mA
DIELECTRIC STRENGTH	500Vdc Min for 1 minute
OPERATING TEMPERATURE	-25°C to +70°C
STORAGE TEMPERATURE	-40°C to + 85°C
CASE MATERIAL	Zinc Alloy, Tin Plated over Nickel
CABLE / TERMINATION	Pin
OPERATION LIFE	100,000 Cycles
FEATURES	Mercury Free Contacts
OTHER MATERIALS	Base: Glass Fibre Polyamide, UL94V-0 Terminal: Copper Alloy, Gold plated over Nickel

NOTE: When cutting or bending switch leads it is important that the glass seal is not damaged. The cutting or bending point should be no closer than 3mm to the glass to metal seal and the lead should be supported between the cutting or bending point and the glass to metal seal.

TILT SWITCH - Mercury free contacts

PART NUMBER

VBS 01 02 00

Rev. No.	Revision Note	Date	Signature
A	Website 2003	8th Dec 03	NG

As part of the company policy of continued product improvement, specifications may change without notice. Our sales office will be pleased to help you with the latest information on this product range and the details of our full design and manufacturing service. All products are supplied to our standard conditions of sale unless otherwise agreed in writing.

©2003 Copyright Comus Group of Companies.

The Comus Group of Companies
consist of:

Assemtech Europe Ltd
Comus International
Günther Belgium
Günther France

