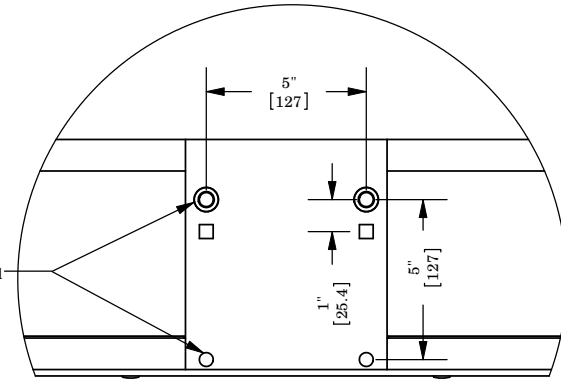
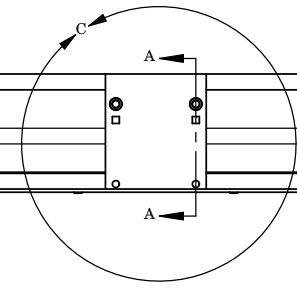
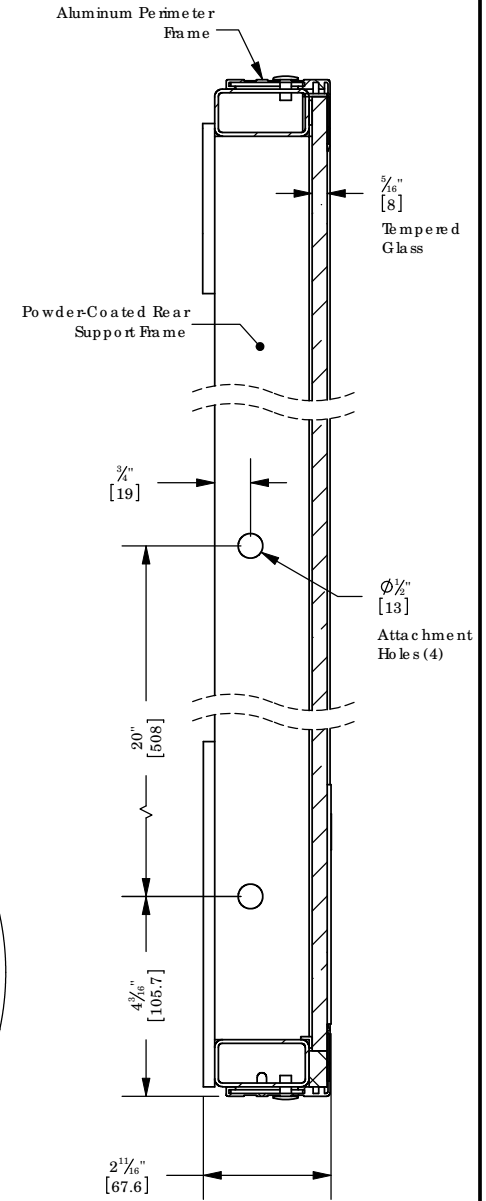
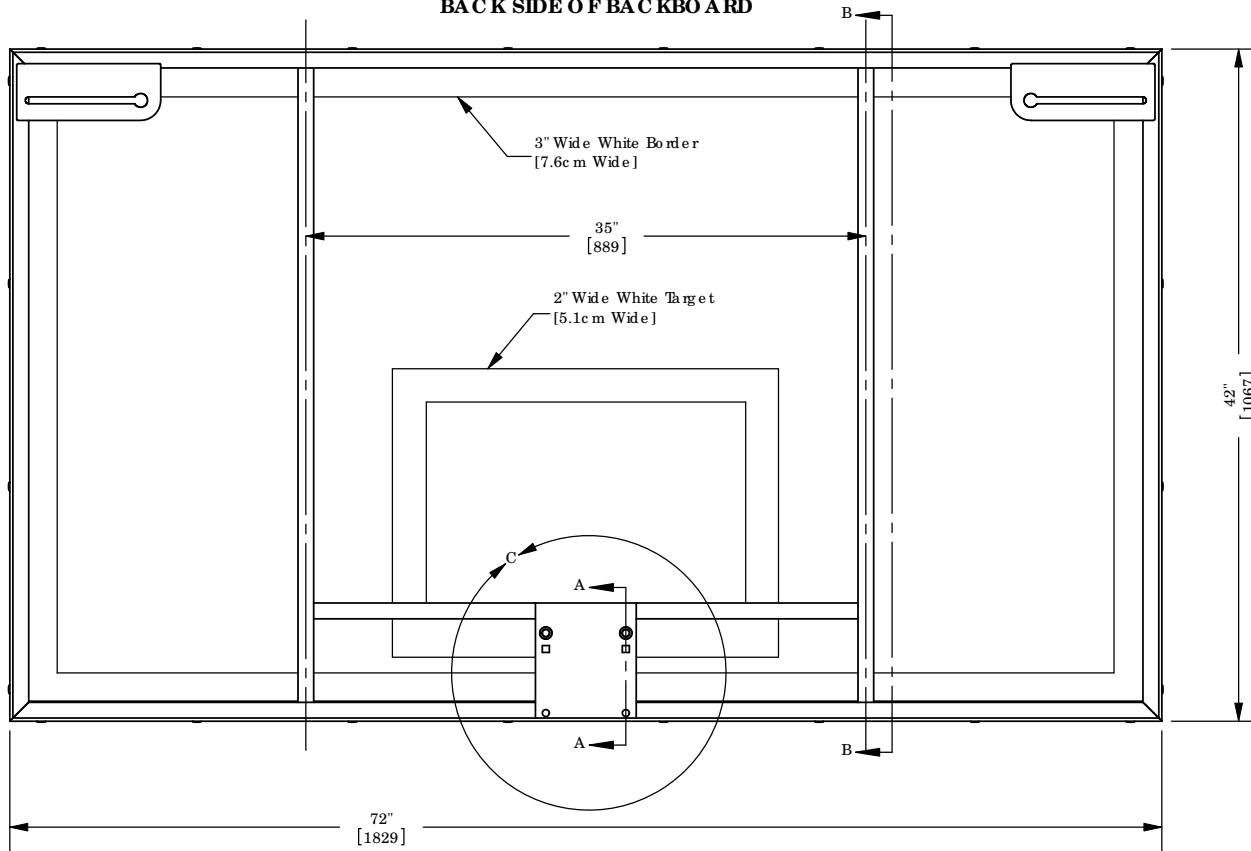
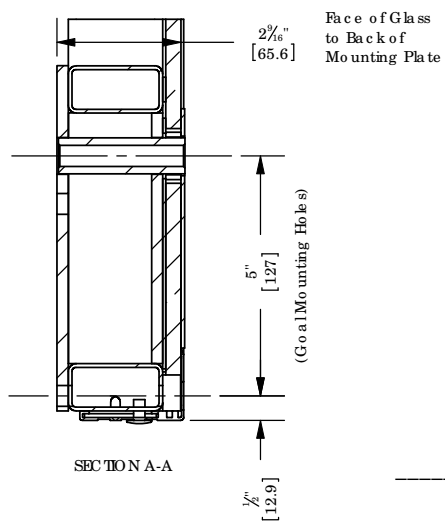


BACK SIDE OF BACKBOARD



DETAIL C



SECTION A-A

- 2097242 RECTANGULAR GLASS BACKBOARD WITH STEEL FRAME

- 00324672 BACKBOARD PADDING KIT- BLACK (EACH)

COPYRIGHT 2010 PORTER ATHLETICS, INC.
 ALL RIGHTS RESERVED
 THIS PRINT IS THE PROPERTY OF PORTER ATHLETICS, INC. EQUIPMENT COMPANY AND MAY NOT BE REPRODUCED WITHOUT WRITTEN PERMISSION

2097242
 72" x 42" RECTANGULAR GLASS BACKBOARD WITH STEEL FRAME

Porter
 WORLD LEADER
 IN QUALITY SPORTS EQUIPMENT
 601 MERCURY DRIVE
 CHAMPAIGN, ILLINOIS 61822
 www.porterathletic.com

PAGE NO. B-2097242
 DATE 7/29/2010

SPECIFICATIONS

PORTER No. 2097242 - 3'-6" x 6' **RECTANGULAR GLASS BACKBOARD**

Backboard shall be official size, 3'-6" x 6'-0".

Backboard frame shall be of a welded, unitized construction fabricated from heavy-wall rectangular steel tubing. Unitized frame shall include two (2) vertical struts located on 2'-11" centers with mounting holes for attachment to support structures. Goal mounting area shall be reinforced by horizontal and vertical support tubing to minimize undue loading on the glass section during slam-dunks, etc. Entire unitized frame structure shall be powder coated in a durable weather-resistant finish before final assembly.

Glass shall be provided in 5/16" thick, fully tempered (heat-treated) glass section with uniform load and impact strength. Official white border and target area is "fired in" permanently on front side of glass section so that it cannot wear away. Glass section shall be secured to unitized rear frame by means of an attractive, L-shaped brushed aluminum extrusion for optimum durability. Front perimeter frame shall be secured to unitized rear frame with structural truss head rivets. Glass section shall be fitted with shock absorbing neoprene material to cushion and protect the glass section. Goal mounting holes (4) to be on a 5" x 5" hole pattern.

Backboard recommended for either indoor or outdoor usage.

OPTIONAL ITEMS TO SPECIFY

- See Page No. B-324-72 for specifications on Porter No. 00324-672 Backboard Padding Kit.