

 A high-angle, blurred photograph of a large crowd of people, likely at a school event or fair, with many individuals wearing dark clothing.

Secondary Education in Essex

Your guide to transferring from
primary to secondary school

2012/2013

Closing date for applications: 31 October 2011
Apply online at: www.essex.gov.uk/admissions



Online admissions

Parents and carers who live in Essex can now apply for their child's school place online using the Essex Online Admissions Service at:

www.essex.gov.uk/admissions

The online application system has a number of benefits for parents and carers:

- it's quick and easy to use;
- you can access related information through links on the website to find out more about individual schools, such as home to school transport or inspection reports;
- you can change the school preferences or the order of preference on your application up to the closing date;
- you will be sent an email to confirm that your application has been received;
- you will be told the outcome of your application more quickly than by post if you request it to be sent to you by email as well.

When making your online application use this space to record your unique identification code (UID) which will have been sent to you by post. Please also make a note of the password you choose when first logging on to register as you will need it to enter the site on any future occasion.

UID:

My password:

You will be able to make your application online from **3 September 2011**.

The closing date for secondary applications is 31 October 2011. This is the statutory national closing date set by the Government.

You will be able to view your application online after the closing date of 31 October but you will not be able to amend your preferences after this time. Should you have a genuine reason for amending your preferences after the closing date, you will need to notify School Planning and Admissions in writing (see page 8).

Contents

Online admissions	2	The application process explained	17
Introduction	4	Appeals against admission decisions	18–19
Choice Advice	4	<ul style="list-style-type: none"> • Making an appeal • After you have made your appeal • At your hearing • Grouped appeal hearings • The decision 	18 18 18 18 19
Primary to secondary transfer timetable	5	Special Educational Needs and Essex special schools	20–21
Essential information for parents	6–26	Home to school transport	22–24
<ul style="list-style-type: none"> • Common Application Form (CAF) • Supplementary Information Form (SIF) • Closing date for applications • Priority admission areas • Types of schools • Using all your preferences • School preference order • Grammar schools • Children with statements of Special Educational Needs applying for grammar schools • Changing preferences • Applying to schools outside Essex • Home address • Shared parental responsibility • Address checking • Fraudulent/Misleading applications • Moving house • Distance tie breaker • Siblings • Will my child's brothers and sisters be able to go to the same school? • Twins, triplets etc. • Children who are cared for by a local authority (Looked After Children) • Medical circumstances • Admission of children from overseas • How decisions are made • Withdrawal of offers • Late applications • None of your preferences can be met • If you are not offered a place • Waiting lists • I've decided that I prefer a lower preference school • Continued interest in a school after the beginning of the autumn term • I want to change secondary schools • Fair Access Protocol • What happens post 16? 	6 6 6 6–7 7 7 7–8 8 8 8 8–9 9 9 9 9–10 10 10 10 10–11 11 11 11–12 12 12 12 12–13 13 13 14 14 14 14 15 15	<ul style="list-style-type: none"> • Mainstream secondary schools • Denominational schools • Grammar schools • Points to remember • Sustainable modes of travel scheme • Scholars' Tickets • Spare Seat applications • Post 16 transport 	22 22 22 23 23 23 23 24
Co-ordinated admission arrangements and what they mean	16	Financial assistance for parents and students	25
		<ul style="list-style-type: none"> • Uniform grants • Free school meals 	25 25
		School term dates	26
		School governors	26
		Secondary schools in Essex	27
		<ul style="list-style-type: none"> • School information explained 	28
		Secondary school policies	29–103
		The Essex Admissions Forum	104
		A guide to information sources	105
		Useful addresses and telephone numbers	106–107
		Index of schools	108
		Inside the back cover – The Essex Common Application Form, notes of guidance and application checklist.	

The information contained in this booklet is correct as at the time of printing. Policies may change in the light of decisions made by the Schools' Adjudicator or any changes in the law. An addendum will be available on the website and on request.

Introduction

Welcome to Secondary Education in Essex 2012/2013. This booklet is for parents and carers living in Essex whose children will be starting secondary education in the school year that begins in September 2012.

Please take the time to read this booklet carefully as it will help you through the application process. It gives you the information you need to help you make an informed application for your child's secondary education and explains how places are allocated and how to appeal if you are refused a place at your preferred school(s). Vital information is included to help you through the co-ordinated admissions process, including the all important deadline for getting your application in on time. Please make use of all your preferences.

In 2007/08 we introduced the online applications system through which over 67% of applications were submitted last year. Applying online allows you to complete the process quickly and easily over the internet. Alternatively an application form can be found on our website for downloading or you can request a form (contact details on page 108) if you would prefer to apply on paper. **Please do not do both.**

The Local Authority (LA) is the part of Essex County Council which has responsibility for the provision of education across the county. The LA's School

Planning and Admissions team provides help to parents applying for primary or secondary places in Essex and is responsible for the co-ordination of admissions to all Essex maintained schools. The Education Transport & Awards team processes applications for free home to school transport for children of compulsory school age. If you require any assistance with your application School Planning and Admissions will do its very best to help you (contact details are at the back of this booklet on page 106).

We are proud of our schools and teachers in Essex. Together they provide excellent teaching and learning opportunities in a well resourced, caring environment. Essex schools will encourage your child to develop and will provide an excellent preparation for their future. I hope that your child has an enjoyable and fruitful secondary education, and I wish them every success for the future.



Councillor Stephen Castle

Cabinet Member for Education
and the 2012 Games

Choice Advice

The Government recognises that the transition between primary and secondary school can be a difficult time for families and children. Admission arrangements are made as clear and simple as possible but nonetheless can often appear complex. While most families are able to navigate the system successfully, there are some families who find it difficult to understand.

In order that all parents have the best opportunity to make use of the options open to them the LA has established an independent Choice Advice

Service. This Service will help those parents who find it hardest to use the admissions system to make informed decisions about which schools might best meet their child's needs. However Choice Advisers do not take decisions for parents and cannot guarantee a place at a particular school.

The service is available throughout September and October 2011. If you need assistance from the Choice Advice Service please contact Essex County Council on 0845 603 2200 or email choice.advice@essex.gov.uk

Primary to secondary school transfer timetable

Keeping track of your application

As deadlines are a critical part of the process of applying for a child's secondary school place, a step by step timetable is here to assist parents. You can use it to check that you have done what you need to and received the necessary information and correspondence. The Local Authority sends all correspondence "in good faith" that it will be received on time. If you do not receive any of the key letters or emails, including an acknowledgement of your application, then please contact School Planning and Admissions immediately (contact details are on page 106).

DATE	PROCEDURE	ACTION BY
Week commencing 29 August 2011	Secondary school application information sent to all Year 6 pupils attending an Essex primary, junior or independent school and Essex children attending non-Essex schools (where known). The Secondary Education in Essex 2012/2013 booklet is on the ECC website.	LA and primary schools
3 September 2011	Online applications facility opens (see page 2).	LA/Parents
September/October 2011	Visit the admissions website and read through this booklet, find out about and visit schools. Dates for open days and evenings are given in each school's entry. It is important to consider how your child will get to school (see transport guidelines on page 22–24).	Parents
w/c 10 October 2011	A reminder letter will be sent to parents who have yet to submit an application form. Primary schools will be notified of those parents who have yet to apply.	LA
31 October 2011	LAST DAY FOR RECEIPT OF COMMON APPLICATION FORM EITHER PAPER OR ONLINE Applications received after this date will generally be treated as late. The online admissions system will not accept applications after this date.	Parents
November/December 2011	Tests for specialist places at some schools (various dates) are taken by all pupils where parents have requested this on the school's supplementary information form.	Schools selecting by aptitude/ability and parents
November/December 2011	Admission policies for schools are applied to relevant applications – see page 12 for an explanation of the process.	Schools and LA
19 November 2011	11+ test for selective schools sat at parent's nominated school.	Selective schools and parents
30 November 2011	Late 11+ test for selective schools for children unable to take earlier test.	Selective schools and parents
January – February 2012	Information exchanged with other authorities and preferences sorted to identify the highest that can be met – see examples on page 16.	LA
9 January 2012	The last date that evidence of changes of address can definitely be accepted to be included in the first round of offers on 1 March 2012.	Parents/LA
1 March 2012	NATIONAL OFFER DATE. Offer letters sent to all Essex resident applicants. An email will also be sent to those who applied online and who asked for it, confirming the outcome of their application. If you DO NOT receive a letter by 8 March 2012 then please contact School Planning and Admissions.	LA/Parents
22 March 2012	The latest date to lodge an appeal against a refusal of a place if you want it heard before the end of the summer term.	Parents
March – 10 September 2012	Waiting lists are maintained for all oversubscribed schools and any places that become available are filled.	LA
April – July 2012	Appeals held.	Schools and LA
10 September 2012	LA ceases to maintain waiting lists for foundation, voluntary aided schools and Academies.	LA

Essential information for parents

This booklet contains the arrangements for admissions to schools as carried out by Essex County Council, in accordance with statutory regulations and guidance from the Department for Education and the statutory instruments.

Common Application Forms (CAFs) and Supplementary Information Forms (SIFs)

Parents¹ living in Essex² must apply to Essex County Council for their preferred secondary schools. The Essex Common Application Form (CAF) is the only way you can apply for a secondary school place for your child. The CAF can either be completed and submitted online at www.essex.gov.uk/admissions or you can complete and return the form at the back of this booklet. **Please do not do both.** If more than one application is received the authority will process the last one to be submitted. All parents who list their preferred schools on the LA's CAF are regarded as having made valid applications.

Your online application will be acknowledged immediately by email only. Paper applications will be acknowledged within 10 working days. Please contact School Planning and Admissions if you do not receive an acknowledgement (contact details are on page 106).

Some schools will need extra information to rank your application against their admission criteria after you have made an application. These schools will ask you to complete a Supplementary Information Form (SIF). Most schools of a religious character will ask you to complete a SIF, as will those schools that have partial selection by aptitude or ability.

If you are applying for a place at a selective school (grammar school) in Essex or Southend you must put that school as one of your preferences on your CAF. The Consortium of Selective Schools in Essex (CSSE) will require you to complete a SIF to

register your child to take the 11+ test and give information related to this.

Where a SIF is required, this is made clear in the school's admissions policy which you can find on our website by selecting the individual school or in this booklet (pages 29–103). You can also view and download SIFs which are displayed below the school's admissions policy where a school has a SIF.

Please remember that completing a SIF on its own is not an application – you **must** complete the Common Application Form and send it to us.

Closing date for applications

The statutory national closing date for all applications whether online or paper is **31 October 2011. It is vital that you apply on time.** Applications received after this date will normally be treated as late and will receive a lower priority (see page 12).

Priority Admission Areas

Although schools no longer guarantee places to children living in their priority admission area, many include living in the priority admission area as one of their oversubscription criteria. **We strongly recommend that you include your priority admission area school, if you have one, as one of your preferences to give you a better chance of getting a place at a local school. For example, you could include it as a lower preference in case you are refused a place at a higher preference school. If you do not include your priority admission area school and you are not offered a place at any of your preferred schools, it is possible that your child could be offered a place several miles away from your home address.** If you have any doubt as to which is your priority admission area school then please do not hesitate to contact School Planning and Admissions (contact details page 106) with your postcode or road name and house number and they will be able to advise you.

¹ Parents include guardians and carers or any person who has parental responsibility or care of the child.

² If you live in Essex you will pay your council tax to one of the following Borough Councils: Basildon, Braintree, Brentwood, Castle Point, Chelmsford, Colchester, Epping Forest, Harlow, Maldon, Rochford, Tendring or Uttlesford.

Essential information for parents continued

After the first round of offers on 1 March, some schools may apply mid-year admissions protocols to admit children moving into their area where there is no other school with space within a reasonable distance.

If you are in any doubt about the priority admission area in which you live you should contact School Planning and Admissions with your address and ask for clarification (contact details on page 106).

Some foundation and voluntary aided schools and Academies have different rules on home address. You should check each school's policy.

Types of schools

All schools in Essex (except private schools) are known as maintained schools. There are five types of school outlined below. The list of schools in this booklet shows which type of school each one is. The differences relating to pupil admissions are:

- community schools – the Local Authority (LA) is the admission authority and is responsible for all aspects of pupil admissions and appeals;
- voluntary controlled schools (VC) – these schools often have a religious character, normally Church of England. The LA is the admission authority and is responsible for all aspects of pupil admissions and appeals;
- foundation schools – the school's governing body is the admission authority and is responsible for all aspects of pupil admissions and appeals;
- voluntary aided schools (VA) – these schools have a religious character often Church of England, Roman Catholic or Jewish. The school's governing body is the admission authority and is responsible for all aspects of pupil admissions and appeals;

- Academies – these are independent schools in the maintained sector. The Academy's admission policy and arrangements must be consistent with admissions law and the School Admissions Code and the governing body is the admission authority.

Using all your preferences

We strongly recommend that you use all four of your preferences and include your priority admission area school as one of your preferences (see pages 6 and 7). If you express a preference for just one school and a place cannot be offered, you will be allocated a place at the nearest school to your home address with a place available after all the other on time applications have been dealt with. **This could mean your child being allocated a school several miles away from your home address.** Your local school must be one of your preferences in order for it to be considered; this will not be done automatically.

Applying for more than one school does not in any way reduce your chances of being offered your highest preference so please do use all of your preferences.

School preference order

You should put your preferences in the order you really want them. If parents differ as to the preferences they wish to express for their child they should resolve that difference before making an application, as the LA will only process one application for each child. The ranked order of your preferences is confidential to the LA and will only be shared with schools in the event of appeals. In accordance with the statutory School Admissions Code schools must not use admissions criteria that require you to put them as first preference to gain a higher priority. No Essex schools use such criteria. If your preferred schools are not in Essex you should check their admissions criteria carefully. Contact details for LAs bordering Essex can be found on page 107.

Essential information for parents continued

It is important that, when selecting your preferences for school admission, you take into account how you will transport your child to school. The following website may give you useful information about alternatives if your child will not qualify for home to school transport: www.essex.gov.uk/publictransport.

See pages 22-24 for more details.

Grammar schools

You must put your preferred schools on the application form in the order that you want them, and this should include grammar schools if you wish your child to take the 11+ selection test. It is not sufficient just to complete the CSSE's SIF, which must be returned by 31 October 2011. You will need to consider the order of schools carefully. School Planning and Admissions will offer places according to the highest of your preferences that can be met. Entry to all four grammar schools in Essex is based on the results of the 11+ selection test. If your child's selection test score is high enough for him/her to be offered a grammar school place but you have expressed a higher preference for another school that can be met, your single offer of a place will be at your higher preference school, not the grammar school.

Children with statements of Special Educational Needs applying for grammar schools

In most cases your child's secondary school place will be decided through a consultation process with SENCAN. However there are a small number of parents who wish their child to take the entry test for grammar schools. In these cases a CAF should be completed and submitted to School Planning and Admissions by the closing date. By completing the CAF your child will be invited to sit the 11+ selection test held in November 2011 which is run by the CSSE. If your child is ranked high enough to be offered a place, we will inform the SEN caseworker involved who will be able to name the school in your child's statement.

Changing preferences

You can change your preferences if your initial application was made online by changing them online and resubmitting your application as long as this change is made by the closing date. If you applied on paper you will need to write to School Planning and Admissions (contact details on page 106) before the closing date so your letter is received by 31 October 2011.

You cannot amend your preferences after the closing date without a genuine reason for doing so, for example if your family have moved address. If you have a genuine reason for changing your preferences after the closing date, you should notify School Planning and Admissions in writing (contact details on page 106), stating your reasons for wanting the change. Your request will be considered.

Applying to schools outside Essex

Secondary school admissions are fully co-ordinated across the country. This means that if you are resident in Essex you only need to fill out one form, the CAF, even if some or all of your preferred secondary schools are outside Essex. You can either apply online at www.essex.gov.uk/admissions or complete and return the form in the centre of this booklet. **Please do not do both.**

Home address

Applications will normally be processed on the basis of the home address for the child at the time of application and determination. The home address is considered to be the address at which the child resides on a permanent basis or is 'ordinarily resident'. This is generally the address of the parent/carer. In some cases, children may be 'ordinarily resident' for the majority of the school week, including overnight, with another relative or carer, such as a grandparent. Where this is the case, the application may be processed on the basis of that address and **proof of address and residence arrangement will be required with the application.** The child must be living with the

Essential information for parents continued

relative or carer 24 hours per day, for the majority of the school week.

Arrangements where parents can leave and collect children from another relative or carer on a daily basis will be regarded as childcare arrangements, and the child will not be deemed to be 'ordinarily resident' with that person. In all cases we expect that the adult with whom the child is 'ordinarily resident' receives the child benefit for the child.

Some foundation and voluntary aided schools and Academies have different rules on home address. You should check each school's policy.

Shared parental responsibility

Where both parents share parental responsibility and live at different addresses and they cannot agree on the application for a school place, the application will be held in abeyance until either agreement is reached, demonstrated by both parents confirming this in writing, or a court order is obtained confirming which parent's application carries precedence. Failure to secure an agreement before the published offer date could prejudice your child's chances of gaining a place in a preferred school.

Address checking

Where residency is relevant to an application for a school place, the LA will ask a random sample of applicants to provide proof of their home address. This must be a copy of one of the following:

- UK driving licence;
- council tax notification;
- two utility bills dated within the last six months (gas, electricity, water or landline phone).

Fraudulent/Misleading applications

Regrettably, on occasion some parents give false information about their home address to get a place at a particular school. **This is completely unacceptable** and can have the effect of denying a place to a child with a more genuine claim. The

County Council expects that all applications are made in good faith giving the correct information.

Where there is reasonable doubt as to the validity of a home address, the LA reserves the right to take additional checking measures including, in some cases, unannounced home visits. If a school place is secured through false information regarding a home address, the LA in consultation with the admission authority has the right to withdraw the place and will exercise that right in relevant cases.

Moving house

If you move address either within Essex or into Essex during the admissions process you must notify School Planning and Admissions immediately of your new address in writing together with verification of that address (proof of exchange of contracts if you have purchased your new home or tenancy agreement if you are renting). If there are changes to your plans you must let School Planning and Admissions know immediately or your child's offer of a place could be withdrawn.

If you know you are moving to Essex before the closing date for applications but are not able to provide evidence by that date, you must apply for Essex schools via your home authority.

If you make an online application and you have moved house it is not sufficient to change your address on your online application. You must inform School Planning and Admissions in writing and provide evidence of your move as described above.

If this evidence is received after 9 January 2012, we cannot guarantee that your application will be processed using your new address. If your child is subsequently placed on a waiting list where the position is influenced by home address, your new address will be used to determine your position. **Please note that if you are applying for a place at schools outside Essex there may**

Essential information for parents continued

be different dates after which a new address can be considered. If you are in doubt please contact School Planning and Admissions (contact details on page 108).

If you own a property in Essex but are not living in it, perhaps because you are working abroad at the time you make your application but intend to take up residency at your Essex home before the start of the autumn term, your application will be processed using your Essex address. Any offer of a school place will then be conditional upon receipt of evidence of your taking up residency at that property in Essex.

Distance tie breaker

Most schools use distance to prioritise their applications both within each individual criterion and as a final criterion. Straight line distance is commonly used, however a small number of schools measure by the shortest walking route.

All straight line distances are calculated electronically by the LA using data provided jointly by the Post Office and Ordnance Survey. The data is used to plot the co-ordinates of each individual property and school and provides the address points between which straight line distance is measured. Distances are reported in miles to three decimal places in the first instance. In the unlikely event of two applicants with an identical distance competing for a single place at a school the place will be offered to one applicant on the basis of lots drawn by an officer of the County Council not involved in admissions, with the exception of twins, triplets etc.

Siblings

For all community and VC schools, and for some foundation and VA schools (indicated by ‡ in the school's admission policy) the following definition applies:

For applications made in the normal admissions round a relevant sibling is a child who has a brother, sister, adopted brother or sister or

stepbrother or stepsister living in the same family unit in the same family household and address who attends the preferred school in any year group excluding the final year. Biological siblings who attend the preferred school in any year group excluding the final year will also be treated as siblings irrespective of place of residence. Children residing in the same household as part of an extended family, such as cousins, **will not** be treated as siblings.

For mid-year applications a sibling is a child who has a brother, sister, adopted brother or sister, stepbrother or stepsister living in the same family unit in the same family household and address as a child who attends or has been offered a place at the preferred school at the time of application and determination and with a reasonable expectation that the sibling will be attending at the time of admission. Biological siblings who attend the preferred school will be treated as siblings irrespective of their place of residence.

For 11–18 schools, a sibling link to a child in Year 11 or Year 12 at the time of application and determination will be taken to exist where there is a reasonable expectation that the child will be returning to the school for a post 16 course of study.

Foundation and voluntary aided schools and Academies may have different definitions of a sibling. Please contact the school to check.

Will my child's brothers and sisters be able to go to the same school?

You should check the priority given to siblings in each school's admissions criteria to assess the chances of this. **There is no guarantee that siblings can go to the same school.**

Twins, triplets etc.

For community and voluntary controlled schools in the normal admission round, if the last child to be offered a place is a twin and their sibling cannot be offered initially, the LA will ensure both twins

Essential information for parents continued

are offered a place. In the case of triplets or other multiple births, if the majority of children can be offered a place initially, the LA will offer places to the remaining children. For example if two triplets can be offered a place, the remaining child will also receive an offer of a place.

For mid-year applications, where a family moves into an area necessitating a change of school for their twins (or triplets etc) and the majority can be offered a place then a place will be offered for the remaining child(ren). However, where the family does not move but wishes to transfer the children to another local school where there are insufficient places for all of them then a place would not normally be offered to all.

For foundation and voluntary aided schools and Academies the decision will be made by the governing body.

Children who are cared for by a local authority (Looked After Children)

Relevant Looked After Children, as defined in Section 22 of the Children Act 1989, will be given first priority in oversubscription criteria ahead of all other applicants in accordance with The Education (Admission of Looked After Children) (England) Regulations 2006. A relevant Looked After Child is one who is looked after by the LA in accordance with Section 22 of the Children Act 1989 at the time an application for their admission to a school is made, and who the LA has confirmed will still be looked after at the time when they are admitted to the school.

Medical circumstances

Exceptional medical circumstances why a child should attend a particular school may override other admission criteria if supported by medical evidence at the time of application. The relevant medical reasons may be in relation to either the child or one or both parents. You must provide evidence from a doctor or other registered health professional setting out why the preferred school is the most suitable, and the difficulties that

would be caused if the child attended and had to travel to another school.

Applications made on this basis will be considered by the admission authority in question. For community and voluntary controlled schools medical applications will be considered by a panel of LA Officers. The panel will decide whether the evidence provided demonstrates that the medical circumstances are exceptional and if it is appropriate for the application to override those in other admissions criteria. Under the Disability Discrimination Act the general expectation is that schools will make reasonable adjustment to accommodate the needs of individual children with disabilities or medical needs. For this reason only exceptional medical circumstances will mean that it is appropriate for a child to be admitted to a particular school.

Where a parent asks for exceptional medical circumstances to be taken into account in connection with a mid-year application those circumstances will only be considered where it is necessary to rank applications in priority order, for example, where more than one applicant for a single space has been received and one of those applicants has stated exceptional medical circumstances.

Foundation and voluntary aided schools and Academies may give similar consideration to applications made on medical grounds, but you should contact the school if you are in any doubt.

Admission of children from overseas

All children of compulsory school age (5 to 16 years) in the UK have a right of access to education. However, where the child is in the UK for a short period only, for example less than half a term, it may be reasonable to refuse admission to a school.

Children who hold full British Citizen passports (not British Dependent Territories or British Overseas passports), have a passport endorsed to show a right of abode in the UK or are

Essential information for parents continued

European Economic Area nationals normally have unrestricted entry to the UK. An application for a school place will be accepted for such children even though they may not be resident in the UK at the time of application. The application may however be processed on the basis of the overseas address.

If an applicant meeting the above criteria owns a property in Essex but is not living in it, perhaps because they are working abroad at the time of application, but they intend to take up residency at the Essex home before the start of the relevant term, the application will be processed using the Essex address. Any offer of a school place will then be conditional upon receipt of evidence of taking up residency at that property in Essex.

Other children from overseas do not generally have automatic right of entry to the UK. An application for a school place will not be accepted until they are resident in the UK. **Proof of residency such as endorsed passport or entry visa will be required with the application.**

How decisions are made

Each school has a Published Admissions Number (PAN) which is the maximum number of children the school can admit each year. If there are more applications than the PAN then the oversubscription criteria will be applied. This is a set of rules against which applications are prioritised, for example siblings or distance. The entry for each school in this booklet (pages 29–103) sets out a summary of the oversubscription criteria. It also includes information on the number of applications received and the last admission criterion reached last year. This information can help you assess the chances of your application being successful.

Withdrawal of an offer

If a school place has been secured through false information or has been offered in error, the offer of the place may be withdrawn.

No application for a school place is submitted

It is the responsibility of the parent or carer to ensure that the application is received by School Planning and Admissions by 31 October 2011.

If you fail to submit an application you will not be offered a school place. If you do not intend to apply because you will be sending your child to a private school please inform School Planning and Admissions (contact details on page 106).

Late applications

Applications received after the published closing date will be treated as late applications unless there is evidence or you provide evidence to show that the application could not reasonably have been made on time. **A new preference or change in the order of preferences will not be accepted after the closing date unless the circumstances are deemed to be exceptional.** Late applications will be given a lower priority and will be dealt with after all on time applications in the first round of offers on 1 March 2012.

Where a school is oversubscribed late applications will be refused and ranked according to the admission criteria on any waiting list held for the particular school. All late applications will be considered by an LA panel of officers to ascertain whether exceptional circumstances for late submission exist. Where that is deemed to be the case the application will be treated as 'on time'⁴. Where a school is oversubscribed late applications received after the first round of offers on 1 March 2012 will be refused and ranked according to the admission criteria on a waiting list held for the particular school.

None of your preferences can be met

In the unlikely event of none of your preferences being met because other applicants meet the admission criteria better, you will be offered a place at the nearest school to your home address with a space available. Remember to use all your preferences. For September 2011 only 1.87% of

⁴ It will not be possible to treat any application received after 9 January 2012 as on time. In addition, any applications or change requests received after 4 February 2012 will be held and not considered until after the first round of offers on 1 March 2012.

Essential information for parents continued

Essex parents could not be offered any of their preferences whilst 93.4% were offered their first or second preferences of secondary school.

If you are not offered a place

If you cannot be offered a place at your preferred school(s) the law requires that you be given the right to appeal to an independent appeal panel against that decision. In the vast majority of cases you will not actually be appealing against the decision which will have been based entirely on the objective criteria set out in each school's admission policy (see pages 29–103) but on the basis of your individual case for wanting your child to attend that school. Independent appeal panels can grant a place at a school even when the admission authority has demonstrated that the process has been carried out properly and all the available places have been filled. Panels have to weigh the disruption and difficulty to the school and the quality of education it delivers (referred to as 'prejudice') as a result of having an additional pupil against the prejudice to the child of not attending that school. The expectation is that parents will have significant reasons why their child must attend their preferred school(s). Experience suggests that where this is not the case most appeals will be unsuccessful. **However, even where parents feel they have significant reasons each individual appeal is considered on its merits and there is no guarantee of success.**

Many parents each year express concern that their appeal has been 'a waste of time'. In these cases experience shows that these parents generally have had little or no significant positive reason for wanting their child to attend their preferred school. An appeal is never a waste of time but chances of success may be slim without significant reasons for attending the school. As an example, whilst complete figures are not available at the time of going to print, for Year 7 admissions to the 9 Essex community secondary schools in September 2011, there have been 22 appeals for places, of which 7 (31.8%) were successful. This information is intended to help parents decide

whether it is worthwhile pursuing an appeal.

Waiting lists

After the first round of offers on 1 March 2012, all unsuccessful applications that are a higher preference than the school offered will be held on a waiting list according to the admissions criteria for the school. This applies to both on-time and late applications.

School Planning and Admissions will hold waiting lists for all oversubscribed schools until the end of the first week of the autumn term 2012. Applicants will be ranked in priority order, according to the school's admission criteria. After this date the LA will continue to maintain waiting lists for oversubscribed community and voluntary controlled schools until the end of the autumn term 2012. Oversubscribed foundation, voluntary aided schools and Academies are required to maintain their own waiting lists, as a minimum, until the end of the autumn term. Waiting list positions can change, for example, as a result of an offer of a place being made or as new applications for the school are received. It is therefore possible that a child's position on a waiting list could move down as well as up.

If you are in any doubt, please check with the relevant admission authority.

Essential information for parents continued

I've decided I would prefer a lower preference school than the one I have been offered

Although you will be given the right of appeal for any preference for which you were not offered a place, your child's name will automatically be held on a waiting list for any preferences higher than the one offered (see pages 13 and 16). If, having received your offer, you decide you would rather your child attends one of your lower preference schools please put this request in writing to School Planning and Admissions. Your application to that school will then be reactivated and added to the appropriate place on the waiting list if there are no places available.

Continued interest in a school after the end of the autumn term

Waiting lists are not automatically maintained after the end of the autumn term for community and voluntary controlled schools. This means that if you have been refused in the normal admissions round but still want a place you will have to contact us to put your child's name on a continued interest list. If a place becomes available, those on the list will be ranked along with any other applications that have been received for a place at the school. When there are more live applications, on the same day, than the number of places available the school's admission criteria will be used to determine any offers that can be made.

This situation may be different if you are applying for a place at a foundation or voluntary aided school or an Academy. You will need to contact the school to see how they handle your application and continued interest in a place.

I want to change secondary schools

If you are resident in Essex and you wish your child to change schools after the start of September 2012 because you have moved house, or for any other reason, you should contact School Planning and Admissions (contact details on page 106). The opportunity to transfer depends on places being available at the preferred school. If approved, a place is usually made available at the start of the following term. If no places are available your application will be refused and you will be given the right of appeal (see page 18–19). Applications for transfer will not ordinarily be determined until the half term prior to the requested admission date. In cases where a child moves into a new district area (proof of address required, see page 9) and, as a result of the move the child would be without a school place, the application will be dealt with immediately.

Changing schools is a serious step to take, particularly for pupils in Years 10 and 11. **Before applying please discuss the reasons for your request with your child's current headteacher. You should not remove your child from their current school before securing a place at another school.** Mid-year a school may admit a child over the admission number and outside the admission criteria where they have been excluded from another school or are being placed as a move supported by all agencies.

The LA has a 'Fair Access' officer who can offer advice and assistance where no schools in the vicinity have vacancies.

Essential information for parents continued

Fair Access Protocol

The Local Authority has a Fair Access Protocol to ensure that schools and the LA work together to ensure that access to education is secured swiftly for children that have no school place. The aim of the protocol is to encourage close co-operation between schools, when allocating places for pupils who are 'hard to place' (for example children with challenging behaviour) that balances the needs of parents, children and schools.

In addition, under the protocol the LA can, in exceptional cases, approach schools and ask them to admit children over their admission number where, for example, a child has moved into an area and there are no schools within a reasonable distance of the child's home with a place available.

Children considered for admission under the Fair Access Protocol will take precedence over children on a waiting list who are attending another school.

If, having applied for a place your child is still left with no school place at all, please contact the School Planning and Admissions team for more advice.

What happens post 16?

About half of the secondary schools in Essex have their own sixth-form and therefore provide for pupils from age 11 to 19. In some parts of the County post 16 education is provided in sixth-form or tertiary colleges. If your child is in or secures a place at a school with a sixth form, the school will publish information about the entry criteria for a place in that sixth form. If your child is refused a place in the sixth form of the school they attend, judged against that published criteria, you, and the child, have a right of appeal to an Independent Appeal Panel (for details of the appeal process see page 18–19). There are sixth-form colleges, providing mainly academic post 16 courses, in Colchester and Thundersley. In Basildon, Braintree, Epping Forest and Harlow, tertiary colleges provide a wide range of academic, technical and vocational education for young people over 16. Further information is available directly from each college.

Pupils who attend an 11–19 school may apply to transfer at 16 plus to another school or college if they wish. General sixth form admission arrangements are given in this booklet; however you should contact the school for further information or a prospectus. If you are refused a place you, and the child, have a right of appeal against that refusal (see page 18–19).

Co-ordinated admission arrangements and what they mean

The Education Act 2002 requires a Local Authority (LA) to co-ordinate admissions to all secondary schools (except private or special schools) in their area.

Essex parents (see page 6) must apply for secondary school places by completing the Essex Common Application Form. This can either be completed online at www.essex.gov.uk/admissions, or you can use the form at the centre of this booklet. **Please do not do both.** Parents can express preferences for up to four schools, both in and out of Essex, in the order in which they would like them considered.

On 1 March 2012, parents will be sent one offer of a place at the highest preference school that can be met. If none of the preferences can be met a place will be offered at the nearest school to the parent's home address with a space available. Here are some examples of this process:

Example 1 – Parent has applied for four schools and the first preference can be met:

Preference 1 – Offered

Preference 2 – Not offered – right to appeal given*

Preference 3 – Not offered – right to appeal given*

Preference 4 – Not offered – right to appeal given*

Example 2 – Parent has applied for four schools and the third preference can be met:

Preference 1 – Not offered – on waiting list and right to appeal given

Preference 2 – Not offered – on waiting list and right to appeal given

Preference 3 – Offered

Preference 4 – Not offered – right to appeal given*

Example 3 – Parent has applied to four schools and no preference can be met:

Preference 1 – Not offered – on waiting list and right to appeal given

Preference 2 – Not offered – on waiting list and right to appeal given

Preference 3 – Not offered – on waiting list and right to appeal given

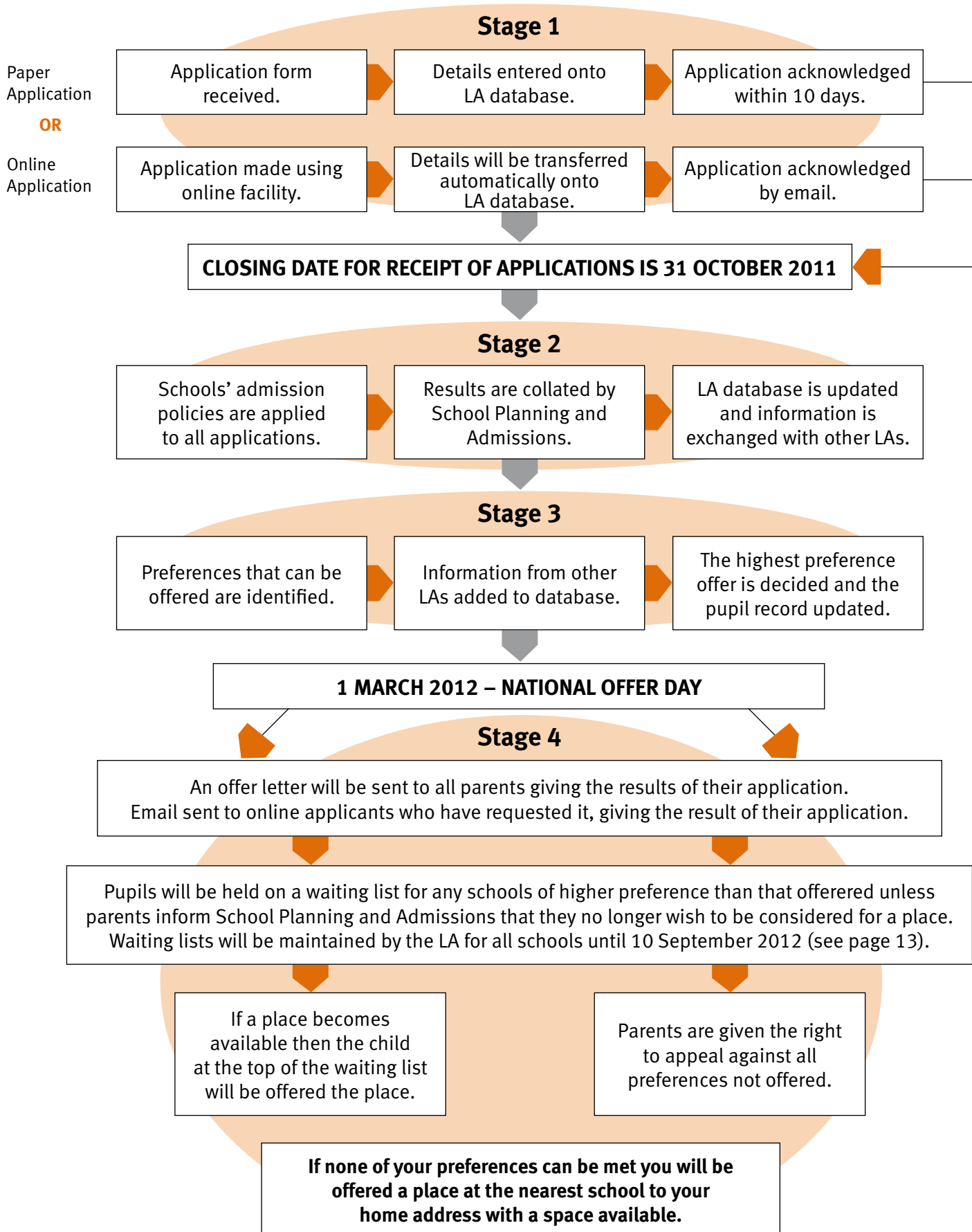
Preference 4 – Not offered – on waiting list and right to appeal given

Parent will then be offered a place at the nearest school to the home address with a space available.

*You will note from examples 1 and 2 that children are only held on waiting lists for preferences higher than the one that can be met.

On 1 March 2012 (National Offer Day) parents will be sent a letter containing the result of their application. An email will also be sent to parents who have applied online and who have asked for it, confirming the outcome of their application.

The application process explained



Appeals against admission decisions

Making an appeal

If your child has not been offered a place at your preferred school you have the statutory right to appeal to an independent appeal panel against the decision not to admit your child, despite not ranking high enough on the admission criteria (see also the section 'If you are not offered a place' on page 13 of this booklet). If you decide to appeal you have 21 days from the date of your refusal letter to make your appeal to ensure that it is heard along with all others.

Detailed information about how to appeal will be sent to you with your offer pack.

After you have made your appeal

You will be advised in advance of the date of your hearing. Wherever possible the appeal hearings will be heard in the area local to the school for which you are appealing.

You are encouraged to attend your appeal in person. If you do not attend, and do not inform the clerk, the panel may then consider your appeal in your absence. You should remember that if your appeal is heard in your absence the panel will be unable to ask further questions about any details of your case which they may wish to clarify before reaching a decision. Your appeal will be heard in private and as informally as possible. If you wish you may bring a friend, relative or representative. At least seven working days before the hearing you will be sent a written summary of the admission authority's case for not being able to offer your child a place at the preferred school.

At your hearing

There will be three panel members who will be introduced to you. A clerk will also be present to record the panel's decisions and advise on the law and procedure. A representative of the admission authority (the school or the LA depending on the type of school – see page 7) will present the case for not meeting your preference.

The panel will have copies of your appeal (plus any letters or additional information you may have sent) together with information on why your preference has not been met. If you attend, the hearing will usually follow this pattern:

the case for not meeting your preference will be presented;

- you, or your representative, may ask questions;
- you, or your representative, will present your case;
- you may be asked questions;
- the reasons for not meeting your preference will be summarised;
- you or your representative will be given the opportunity to sum up.

Grouped appeal hearings

When there are a large number of appeals for one school they may be heard using the 'grouped appeal' system. In this situation, the admission authority will present its case to all parents (and any representatives) at the same time, in the form of an evening presentation. For a small number of appeals, the presentation will take place on the morning of the appeal. When there is an evening presentation notes of the meeting will be sent to all appellants before the second stage. At the second stage, the appeals of the individual parents will be held in private as described earlier and no decisions will be made until all appeals, received on time, for the school have been heard.

Essential information for parents continued

The decision

The panel will, firstly, decide whether the school or LA has demonstrated why it cannot admit any more children. If the panel is satisfied that the admission authority has proven this, it will go on to consider all the points you have made. The second part of the hearing is based on balancing the need of the individual child against the effect on the school of admitting another child. The clerk to the panel will write to you, ideally within five working days, although this may not be possible where there are multiple appeals for one school, telling you of the appeal panel decision and the reasons for it. The decision is binding on both parties.

Essex LA's policy which applies to community and voluntary controlled schools, for parents whose appeal is not successful, is that we will not consider another application for the same school in the same academic year unless there has been significant and material change in circumstances of the parent, child or school which could warrant a new application. These changes have to relate to the new application and not be connected with the result of the first application.

The Local Government Ombudsman can investigate complaints of maladministration.

Special educational needs and Essex special schools

Essex County Council has additional responsibilities for children assessed as having special educational needs and an assessment of these needs may lead to a statement of special educational needs being issued. Most children with statements are educated at their local mainstream school, with additional support if appropriate. Some children who have statements and have significant special educational needs attend a special school or a mainstream school with additional special provision. For further details about the statutory assessment procedures or special education in Essex please ring the Parent Partnership Helpline 01245 436036.

The list on page 21 gives details of the special schools in Essex and an indication of the type of difficulty catered for by each school.

A child is only placed in a special school if they are the subject of a statement of special educational needs and the school is named in that statement. For most children a mainstream school will be able to meet their needs.

Children with statements of special educational needs that name a school are **required** to be admitted to that school. However, if a child with a statement wishes to be considered for a grammar school, the child must sit the 11+ test (see page 8).

If your child has, or is about to be given, a statement of special educational needs you will have discussed the most suitable school and the range of options available with the Special Educational Needs and Children with Additional Needs Service (SENCAN). If you think your child may have special educational needs you should first speak to the headteacher of your child's present school.

Most special schools take pupils from a wide area of the County.

Please note:

If your child has a statement of special educational needs they will be allocated a secondary school place by SENCAN as part of the review of their statement for the transition from primary to secondary school. Whilst you will have the opportunity to express preferences for your

preferred schools you should do this as part of the discussions following the proposed amended statement being issued. **You should not return the Common Application Form in this booklet or make an application using the online facility.** If an application is received for a child with a statement of special educational needs a place will not be allocated as part of the co-ordinated admissions process detailed on page 16. However if you wish your child to try for a grammar school please please see page 8.

SEN transport arrangements

Arrangements for free home to school transport are the same for all pupils, including those with a statement of special educational needs. Applications need to be made online at www.essex.gov.uk/schooltransport.

In line with statutory duty Essex provides free home to school transport to the nearest appropriate school with space if the pupil resides:

- 2 miles or more from the school for pupils up to the age of 8 (end of year 3)
- 3 miles or more from the school for pupils over the age of 8 (year 4 and above)

All routes are measured using the shortest available walking route.

If a child lives under the statutory distance criteria, transport cannot be provided unless there is clear evidence that the child's special educational needs are such that the parent/carer cannot get him/her to school.

The provision of an escort on the vehicle is not automatic and is based on the child's individual needs at the time of assessment.

Where a school is named in a child's statement as it is the nearest appropriate school but as a result of parental preference they choose an alternative school, transport will not be provided to the alternative school. Parents will be required to make their own arrangements to get their child to and from school in this instance.

Special schools in Essex

New Model Special Schools (NMSS) for pupils with Severe and Lifelong Difficulties

School	Serving Area	Age
The Pioneer	Basildon	3 – 19
Edith Borthwick	Braintree	3 – 19
Glenwood	Castle Point / Rochford	3 – 19
Columbus	Chelmsford	3 – 19
Lexden Springs	Colchester	3 – 19
Oak View	Epping Forest	3 – 19
Harlow Fields	Harlow / Uttlesford	3 – 19
Shorefields	Tendring	3 – 19

Community Learning in Partnership (CLiP) for Children with Complex Needs

School	Serving Area	Age
Castledon	Basildon	5 – 16
Thriftwood	Braintree / Chelmsford	5 – 16
Endeavour	Brentwood	5 – 16
Cedar Hall	Castle Point / Rochford	5 – 16
Kingswode Hoe	Colchester	5 – 16
Market Field	Colchester	5 – 16

Physical Difficulties

School	Serving Area	Age
Southview	All	3 – 19

Behavioural, Emotional and Social Difficulties

School	Serving Area	Age
Wells Park	All	7 – 11
Ramsden Hall	All	11 – 16

Home to school transport

If I am offered a school place for my child will I qualify for free transport?

Mainstream secondary schools

Essex County Council meets school transport costs for those children of statutory secondary school age who live at least three miles away from, as measured by the shortest available walking route, and attend their designated local secondary school. Free school transport will be provided for pupils who gain a place at a school that is closer than their designated local school as measured by the nearest road route but is at least three miles away from where they live. In a case where there are two designated schools for a home address the child would be required to reside closer than both.

The right to free home to school transport is extended to children aged 11 or over who are entitled to free school meals or whose parents receive their maximum working tax credit, where they are attending one of three nearest qualifying schools as determined by the LA and they reside between 2 and 6 miles from that school. In these circumstances transport is provided but is reviewed each academic year. Parents are required to submit proof to demonstrate they are in receipt of the benefits outlined above for each year. Transport will therefore be provided in subsequent academic years only if the circumstances of the family remain unchanged.

Denominational schools

Following extensive consultation, Essex County Council has recently taken the decision to amend the home to school transport policy to remove the subsidy for travel to faith schools, whilst retaining it for low income families. The subsidy will be removed for new entrants to both primary and secondary schools with effect from September 2012.

Those students commencing their secondary education at a faith secondary school from September 2012 will not be eligible to receive subsidised transport from the County Council. Due to the continuation of transport for those students in years 8 – 11 with an existing entitlement, there will still be transport available directly through the

transport operator for that school. Details of these operators can be found within the admissions booklet within the entry for that faith school.

This decision will not affect the eligibility of pupils attending Faith Schools who have a statutory entitlement to free transport. That is those children aged 11 or over who are entitled to free school meals or whose parents receive their maximum working tax credit. Eligibility to transport will be based on the child attending the nearest school preferred by reason of a parent's religion or belief where they are residing at least 2 miles from and up to a maximum of 15 miles from the school. More information can be obtained by calling the Education Transport & Awards team or by www.essex.gov.uk/schooltransport or visiting www.dfe.gov.uk.

Grammar schools

Free school transport for pupils attending a grammar school will only be provided if:

- the grammar school is at least three miles from home and there is no nearer comprehensive school; or
- the grammar school is at least three miles from home and parents receive Income Support or Income Based Job Seeker's Allowance. Parents in receipt of Child Tax Credit with an income of below £16,190 may also qualify for free transport; or
- If you have a low income you may request to have your income assessed. If it is at or below the levels of the benefits listed above then you may also qualify for free transport.

The Consortium for Selective Schools in Essex (CSSE) also run transport services to all of their selective schools and you can purchase a termly ticket for this transport. Should your child be successful in gaining a place at a selective school, details will be provided in the information pack sent to you by the CSSE after the offer date. More information is available at www.csse.org.uk or by calling 01245 348257.

Home to school transport continued

Points to remember

- Transport may also be awarded outside of the current policy due to exceptional, individual circumstances. Each request is considered on its merits on the basis of the evidence provided. Further information is available by calling the Education Transport and Awards Team (see page 106).
- **An offer of a school place does not guarantee free school transport even if you live over three miles away from the school you have been offered.**
- Before you apply for home to school transport you should read the information made available to you in this booklet and in the offer pack you will receive after 1 March 2012. You will receive information about entitlement to transport and how to apply in your offer pack. The form and notes of guidance you receive will correspond with the type of school you have been offered. The pack will also give you details about how to make an application for transport online. (This facility is not available for low income applications as supporting documents are required.)

It is important that, when selecting your preferences for school admission, you take into account how you will transport your child to school where the above policies do not apply. The following website may give you useful information about alternatives:

www.essex.gov.uk/publictransport

Sustainable modes of travel scheme

Increasing car use for the 'school run' is considered a significant factor in contributing to local traffic problems, accounting for about 20% of traffic at peak times. In addition, there are perceived concerns about road safety around schools and increasing problems of child obesity associated with inactive lifestyles. Much work has already been done in Essex to tackle these issues through a range of initiatives and schemes and this continues to happen. For more information about the strategy itself and issues relating to transport to school please visit www.essex.gov.uk/schooltransport.

Scholars Tickets

Some commercial bus services are operated under contract to Essex County Council. You may be able to purchase a discounted ticket on these services. For further information go to www.essex.gov.uk/schooltransport.

Spare Seat Applications

There has been a change in the way the County Council manages the spare seats on their contracted vehicles. The Cabinet Member for Education and 2012 Games recently decided to discontinue new provision of free or subsidised spare seats on home to school transport, for pupils otherwise not entitled to free or subsidised transport. Spare seats are therefore no longer available for new applicants through the County Council.

Students already in receipt of free or subsidised spare seats will continue to be offered these whilst remaining in their current school or college phase. This will apply so long as a spare seat is available.

Parents/Carers may still be able to purchase a seat on a vehicle contracted by Essex County Council. These will now be available directly from the company operating the vehicle you wish to purchase a seat on.

Home to school transport continued

Post 16 transport

Students undertaking a post 16 course of full time education at a sixth form or college will be eligible for subsidised transport if the nearest appropriate sixth form or college is more than three miles from home and a contribution is made to the cost of transport. An appropriate sixth form or college is one at which the course, or the majority of the course, is offered. The contribution is payable either in termly instalments or over seven months by direct debit, depending on the date of receipt of application. Parents are exempt from this charge if they receive Income Support, Job Seeker's Allowance (income based) or Pension Guarantee Credit. Families in receipt of Child Tax Credit/ Working Tax Credit whose total annual income (including income from Working Tax Credit, as assessed by the Inland Revenue) does not exceed £16,190 may also have the charge waived. The three mile distance is measured by the nearest 'available route', which may not be the nearest main route to the school.

Financial assistance for parents and students

Uniform grants

The provision of uniform grants is only made in exceptional circumstances. In order for the family to qualify they must be in receipt of qualifying benefits.

Examples of exceptional circumstances where an award will be considered are:

- enforced re-housing and associated move of school;
- parent and children in a refuge enforcing a change of school;
- enforced move of school through bullying, generally with evidence of physical harm;
- exceptional circumstances requiring the replacement of a uniform.

Families must be in receipt of one of the following qualifying benefits:

- Income Support
- Income Based Job Seeker's Allowance
- Child Tax Credit (not Working Tax Credit), with an annual income of below £16,190
- Pension Guarantee Credit
- Employment and Support Allowance, Income Related
- Support under part VI of the Immigration and Asylum Act, 1999

For more information or to request an application form please contact 0845 603 2200 or visit www.essex.gov.uk/schooltransport.

Free school meals

Entitlement to Free School Meals is based on the family receiving one of the benefits below:

- Income Support
- Income Based Job Seeker's Allowance
- Child Tax Credit (not Working Tax Credit), with an annual income of below £16,190
- Pension Guarantee Credit
- Employment and Support Allowance, Income Related
- Support under part VI of the Immigration and Asylum Act, 1999

If you are entitled to one of the above benefits or have an equivalent low income please contact us on 0845 603 2200 for an application form.

Entitlement to free school meals is strictly confidential. Your entitlement will only be shared with the school your child attends to enable the meal to be provided.

You may also be entitled to transport where you have an entitlement to free school meals, depending on the school your child attends and the distance of that school from your home address.

School term dates

Autumn Term 2012

Monday 3 September to Friday 21 December

Autumn Half Term Holiday 2012

Monday 27 October to Friday 2 November

Spring Term 2013

Monday 7 January to Thursday 22 March

Spring Half Term Holiday 2013

Monday 18 February to Friday 22 February

Summer Term 2013

Monday 15 April to Tuesday 23 July

Summer Half Term Holiday 2013

Monday 27 May to Friday 31 May

Schools also have five non-pupil days when children will not be expected to attend school. These vary from one school to another. The day when certain classes begin a new term may also vary. Please contact the school office for more details.

Have you thought of being a school governor?

As you are looking through this booklet, you are likely to be thinking about your child's education and the school that can best provide for this. Did you know that it is the school's governing body that is responsible for the conduct of the school? The governing body should reflect the community that it serves and includes representatives from amongst the parents (elected by the parent population of the school), the staff, the community, the Local Authority and foundation or partnership governors.

School governors can make a very real difference to the way that the school engages with its community, enriching and supporting the school. Every governor is able to bring their knowledge, understand and skills to the governing body – supporting and challenging the leadership of the school in order to ensure that all children receive the best possible education.

If you would like to find out more about becoming a school governor, you can

- contact your local school
- contact Governor Services on 01245 437791
- look at www.essex.gov.uk/governors

Secondary schools in Essex

The following pages list all the secondary schools in Essex along with a summary of each school's admission policy. The school's address, phone number and contact name are also shown along with brief numerical information.

Overleaf we describe how to interpret this information but this is not a substitute for the school prospectus. Please visit the schools to get a true impression.

	For schools in	see page
1	Chelmsford	60
2	Uttlesford	101
3	Braintree	39
4	Colchester	70
5	Tendring	97
6	Maldon	91
7	Rochford	93
8	Castle Point	55
9	Basildon	29
10	Brentwood	47
11	Epping Forest	80
12	Harlow	86



School information explained

Nosuch Secondary School

Acacia End, Chelmsford CM1 2AA

Telephone: (01245) 454545

Email: nosuch@essex.sch.uk

Website: www.nosuch.essex.sch.uk

Headteacher: Mr A Smith

Comprehensive Foundation (Co-educational)

11–16

School Number: 881-4444

Department for Education unique identification number for the school.

Opportunities to visit

Open Week: 3 – 7 October 2011

Published admission number Sept 2012: **300**

No. of places available in Yr 7 for Sept 2012.

Published admission number Sept 2011: **300**

See Note 1

Applications received (all preferences) Sept 2011: **600**

See Note 2

Number on roll Jan 2011: **1403**

Total No. of pupils at the school.

In 2011 the last child was admitted under criterion 3

The last admissions criterion under which pupils were admitted to the school last year.

Admissions Policy

There is no guarantee of a place in the school. In the event of oversubscription places will be allocated using the following criteria in the order given:

1. Looked After Children;
2. children living in the priority admissions area with a sibling attending the school;
3. children living in the priority admission area;

In the remaining applications criterion, which are considered on distance, where Nosuch School is

The normal age range of the school is shown here. Schools with an age range of 11-18 have sixth forms.

A summary of the school's admissions policy. You will need to get a copy of the school's prospectus for a full version of the policy.

Note 1

The Published Admission Number (PAN) is the number of places that the school had available for the new Year 7 in 2011. In general this will be the same as the PAN for 2012.

Note 2

The total number of applications received is as in December 2010 after applications closed. The PAN and the number of applications received for 2011 should give you an idea of the demand for places at the school. Treat this information carefully and talk to the school about it. For instance, some applications may have been second, third or fourth preferences and these increase the overall number of applications. However you must be aware that if you only apply for schools that are oversubscribed you may not receive a place at any of them. Each school has a capacity measurement to show the maximum number of pupils that can be accommodated.

Basildon Lower Academy

Timberlog Close, Timberlog Lane, Basildon SS14 1UX

Telephone: (01268) 552536

Email: admissions@basildonacademies.org.uk

Website: www.basildonacademies.org.uk

Principal: Dr R Fox

Academy (Co-educational)

11–14

School Number: 881-6908

Opportunities to visit

Open Evening: Wednesday 5 October 2011,

7pm – 9pm

School Tours: Parents who wish to visit the school should call to arrange an appointment for either Thursday 6 or Friday 7 October 2011.

Published admission number Sept 2012: **450**

Published admission number Sept 2011: **450**

Applications received (all preferences) Sept 2011: **315**

Number on roll Jan 2011: **906**

In 2010 the last child was admitted under criterion 3

Admissions Policy

Where the Academy is over-subscribed priority is given according to the following criteria in the order set out below. After the admission of children with statements of special educational need which name the Academy on the statement, applications will be considered from:

1. students in public care/'looked after' children;
2. students who, at the time of application, have a sibling‡ on the roll in the Academy and who will still be on the Academy's roll at the time the applicant starts at the 11–14 Academy;
3. other children. Priority will be given on the basis of the closeness of the child's home to either The Basildon Lower Academy or The Basildon Upper Academy, whichever is nearer. Proximity will be measured by straight line distance*.

In the event of a tie the Chair of Governors, supervised by an independent scrutineer, will draw names.

‡ For the purposes of criterion 2 above, a sibling of the applicant means a natural brother or sister, step-siblings, half-brother or half-sister of the applicant, or adopted brother or sister, who will be living with the applicant at the same address on the date of their entry to the Academy.

* For the purposes of criterion 3 the straight line distance will be measured from the address-point of the student's home to the address-point of either Academy site, whichever is nearer and regardless of distance of travel. Straight line distances are calculated by the LA as described on page 10. Where a student lives for part of each week at a different address, the 'home' address shall be that address which is the main family home and where the student spends the majority of the week.

Transport (Basildon Town Area)

If you reside in the Basildon Town area, transport will only be provided if you meet the distance criteria outlined on page 22 and your child will be attending the nearest school to your home address using the shortest walking route. If you would like to confirm the school for which you would be entitled to transport assistance please contact 0845 603 2200 and ask for the Education Transport & Awards Team.

Waiting list held until: end of academic year.

Basildon Upper Academy

Wickford Avenue, Pitsea, Basildon SS13 3HL
 Telephone: (01268) 552536
 Email: admissions@basildonacademies.org.uk
 Website: www.basildonacademies.org.uk
 Principal: Dr R Fox
 Academy (Co-educational)
 14–18
 School Number: 881-6909

Published admission number Sept 2012: **455**

Number on roll Jan 2011: **925**

Opportunities to visit

Parents wishing to visit the Upper Academy should call to arrange a tour and interview with senior staff.

Admissions Policy

If the number of applications for admission in Year 10 is greater than the published admissions number, applications will be considered against the criteria, and in the order, set out below. After the admission of students with statements of special educational need which name the Academy on the statement, applications will be considered from:

1. students in public care/ 'looked after' children;
2. children who, at the time of application are on the roll of the Basildon Lower Academy. Priority will be given on the basis of the closeness of the child's home to either the Basildon Lower Academy or the Basildon Upper Academy, whichever is nearer. Proximity will be measured by straight line distance*.
3. other children. Priority will be given on the basis of the closeness of the child's home to either The Basildon Lower Academy or the Basildon Upper Academy, whichever is nearer. Proximity will be measured by straight line distance*.

In the event of a tie in categories 2 or 3 above the Chair of Governors, supervised by an independent scrutineer, will draw names.

* For the purposes of criteria 2 and 3 the straight line distance will be measured from the address-point of the student's home to the address-point of either Academy site, whichever is nearer and regardless of distance of travel. Straight line distances are calculated by the LA as described on page 10. Where a student lives for part of each week at a different address, the 'home' address shall be that address which is the main family home and where the student spends the majority of the week.

How to apply for a place in Year 10

Applications will be handled in accordance with the process and timetable for the co-ordination of pupil admissions to secondary schools published in this booklet. Applications should be made as follows:

Parents of children attending Year 9 of the Basildon Lower Academy

must sign the transfer register available at the Upper Academy by the published closing date to apply to transfer their child to Year 10 at the Upper Academy. If your child is attending the Basildon Lower Academy and you do not sign the transfer register at the Upper Academy, your child will not be offered a place at the school. This may result in your child being without a school place in Year 10 as the Upper Academy is the only school in Basildon and neighbouring areas that admits children into Year 10 as a normal year of entry. Parents can apply for a place in Year 10 at another secondary school as well as signing the transfer register at the Upper Academy by completing a Mid-Year Application Form available from the Local Authority. Applications for transfer to other schools in September 2012 received by the Local Authority on the Mid-Year Application Form will be treated as casual admissions and will not be determined until the second half of the summer term 2012. The offer of a place in Year 10 at an alternative school will be dependent on there being spaces available at the school.

Parents with children in Year 9 at other secondary schools

who wish to apply for a place in Year 10 from September 2012 must complete the Upper Academy application form available from the LA and return it to the LA by the published closing date.

Transport (Basildon Town Area)

If you reside in the Basildon Town area, transport will only be provided if you meet the distance criteria outlined on page 22 and your child will be attending the nearest school to your home address using the shortest walking route. If you would like to confirm the school for which you would be entitled to transport assistance please contact 0845 603 2200 and ask for the Education Transport & Awards Team.

Basildon Upper Academy continued

Admissions to Sixth Form

There will be open access to post 16 provision for the Academy's own students. A full range of courses will be available and students will agree their programmes with Academy tutors, at the level appropriate to their ability. The same course provision and enrolment arrangements will apply to external applicants.

The Academy will admit up to 70 external applicants in Year 12. If more than 70 external applicants apply for a place, after the admission of children with statements of special educational need which name the Academy, priority will be given in the following order:

1. Looked After Children;
2. other children. Priority will be given on the basis of closeness of the child's home to the Basildon Upper Academy, measured by straight line distance*.

In the event of a tie in category 2, the Chair of Governors, supervised by an independent scrutineer, will draw names.

* For the purposes of criterion 2 the straight-line distance will be measured from the address-point of the student's home to the address-point of the Upper Academy site, regardless of distance of travel. Straight line distances are calculated by the LA as described on page 10. Where a student lives for part of each week at different address, the 'home' address shall be that address which is the main family home and where the student spends the majority of the week.

Waiting list held until: end of academic year.

Beauchamps High School

Beauchamps Drive, Wickford SS11 8LY
 Telephone: (01268) 735466
 Email: admin@beauchamps.essex.sch.uk
 Website: www.beauchamps.essex.sch.uk
 Headteacher: Mr R Hodges
 Comprehensive Foundation (Co-educational)
 Specialist Business & Enterprise Education and
 Applied Learning College
 11-18
 School Number: 881-5406

Opportunities to visit

Open Mornings Tours: Monday 17 and Tuesday 18
 October (tours 9.30am and 11.30am), Wednesday 19
 October (tours 9.30am only). Please contact the school
 to book a place.

Open Evening: Wednesday 19 October 2011
 6.30pm-9pm

Published admission number Sept 2012: **240**

Published admission number Sept 2011: **240**

Applications received (all preferences) Sept 2011: **497**

Number on roll Jan 2011: **1309**

In 2011 the last child was admitted under criterion 4

Admissions Policy

Where applications for admission exceed the number of places available the following criteria will be applied in the given order:

1. Looked After Children;
2. where a child is living in the defined geographical area of Wickford;
3. where a child has a brother or sister (sibling)† attending the school at the time of admission;
4. where a child is living outside the defined geographical area of Wickford.

In the event of oversubscription within any of the above criteria, priority will be determined by straight line distance from home to school, those living closest being given the highest priority. Straight line distances are calculated by the LA as described on page 10.

Exceptional medical reasons may supersede the above criteria. Such requests must be supported by medical evidence from a doctor or other registered health professional, setting out why the preferred school is the most suitable school and the difficulties that would be caused if the child had to travel to another school, at the time of application.

† LA sibling definition applies. (see page 10)

Admissions to Sixth Form

The school is proposing to admit 100 in Year 12, including 15 who will be admitted for the first time in September 2012. Year 12 students will be admitted only if they meet the entry requirements of 44 points calculated from their top 8 GCSE scores to study level 3 courses, and 20 points from their top four GCSE courses to study BTEC and level 2 courses. In addition students must meet specific subject requirements detailed in the prospectus. In the event of oversubscription Sixth Form places will be determined in accordance with the admissions policy above.

Waiting list held until: end of autumn term and thereafter by request.

The Billericay School

School Road, Billericay CM12 9LH
 Telephone: (01277) 655191
 Email: info@billericay.essex.sch.uk
 Website: www.billericay.essex.sch.uk
 Headteacher: Mrs A S Hammond
 Academy (Co-educational)
 Maths & Computing Specialist College
 11–18
 School Number: 881-5468

Opportunities to visit

Open Evening: Tuesday 4 October 2011,
 6pm–9pm
 Headteacher's address: 7pm and 8pm
 School Tours: 11, 12, 18 and 19 October 2011,
 9.10am and 10.10am. No appointment necessary.

Published admission number Sept 2012: **280**
 Published admission number Sept 2011: **280**
 Applications received (all preferences) Sept 2011: **702**
 Number on roll Jan 2011: **1695**
 In 2011 the last child was admitted under criterion 5

Admissions Policy♦

Where applications for admission exceed the number of places available, the following criteria will be applied, in the order stated, to decide which children to admit:

1. Looked After Children as defined in section 22 of the Children Act 1989;
2. children residing in the school's defined catchment area (map available from the school);
3. children with a brother or sister‡ attending the school at the time of admission;
4. where there are medical grounds supported by a doctor's certificate#;
5. distance from home to school (based on straight line measurement) with those living nearer being accorded the higher priority. Distances are calculated by the LA as defined on page 10 of this booklet.

A minimum of 252 children will be admitted in accordance with the above criteria. In addition, up to 28 places will be available to children who demonstrate aptitude in information technology in a test to be conducted at the school on Saturday 12 November 2011. The 28 places will be offered in rank order of aptitude, children must achieve a minimum score in the test.

In the event of equal ranking, places will be allocated in accordance with the distance criterion. Applications to sit the test must be made to the school by the 4 November 2011.

‡ A sibling is a brother, sister, half-brother, half-sister, step-brother or step-sister, living in the same family unit at the same address. An older sibling must be attending the school at the time of admission; therefore having an older sibling in year 13 will not qualify an applicant for a sibling place.

#Exceptional medical reasons may override other admission criteria if supported by medical evidence provided by a registered health professional. The medical reasons should be clearly stated on the application and will be assessed by the Governing Body. Please see page 11 for further guidance.

Admissions to Sixth Form

Sixth Form Open Evening: Tuesday 8 November 2011. Applications to the Sixth Form must be made on the school's application form. Entry requirements vary according to the course of study. Full details are available in the school's Sixth Form brochure. The school will admit up to 50 external students in accordance with the course-related entry requirements. In the event of oversubscription, priority will be determined by reference to average GCSE point score, achievement of a B grade in chosen subjects and other special circumstances#.

♦ For consideration for a place under the IT aptitude criterion this school requires a Supplementary Information Form to be completed.

Waiting list held until: end of autumn term.

The Bromfords School

Grange Avenue, Wickford SS12 0LZ
 Telephone: (01268) 471201
 Email: office@bromfords.essex.sch.uk
 Website: www.bromfords.essex.sch.uk
 Headteacher: Mrs M Spinks
 Comprehensive Foundation (Co-educational)
 Specialist Technology College
 11–18
 School Number: 881-5407

Opportunities to visit

Open Evening: Thursday 6 October 2011,
 6pm – 9pm
 Headteacher's talk: 7pm and 8pm
 School Tours: Wednesday 28 September – Wednesday
 5 October and Monday 10 – Thursday 20 October 2011
 at 8.45am and 9.45am. Please contact the School
 Office to book a place.

Published admission number Sept 2012: **224**
 Published admission number Sept 2011: **224**
 Applications received (all preferences) Sept 2011: **441**
 Number on roll Jan 2011: **1198**
 In 2011 the last child was admitted under criterion 4

Admissions Policy

Where applications for admission exceed the number of places available, the following criteria will be applied, in the order set out below, to decide which children to admit:

1. Looked After Children, as defined in section 22 of the Children's Act 1989;
2. where a child is living in the defined geographical district of Wickford*, the closest to the school being given the highest priority (as determined by straight line distance#). In the event of a tie, priority will be given to a child who has a sibling‡ attending the school in any year except 13;
3. where a child has a sibling‡ who will be attending the school in any year except Year 13, the closest to the school being given the highest priority (as determined by straight line distance#);
4. where a child is living outside the defined geographical district of Wickford*, the closest to the school will be given the highest priority (as determined by straight line distance#).

Exceptional medical reasons may also be considered. The relevant medical reason may be in relation to the child or one or both of the parents. Such requests should be supported by medical evidence from a doctor or other registered health professional setting out why the school is the most suitable and the difficulties that would be caused if the child attended and travelled to another school. Applications made on this basis will be considered by the school's School Admission Panel.

‡ LA sibling definition applies. (see page 10)

* A map of the defined geographical district of Wickford is available on request from the school.

Straight line distances are calculated by the LA as described on page 10.

Admissions to Sixth Form

Sixth Form Open Evening: please contact the school for details.

The school is proposing to admit 100 in Year 12, including 15 who will be admitted for the first time in September 2012. Year 12 students will only be admitted if they meet the entry requirements of the pathway they wish to enrol on. In addition students must meet specific subject requirements detailed in the prospectus available from the school. In the event of over-subscription the school's existing admission arrangements will apply.

Waiting list held until: end of autumn term.

De La Salle School

Ghyllgrove, Basildon SS14 2LA
Telephone: (01268) 281234
Email: admin@delasalle.essex.sch.uk
Website: www.delasalle.essex.sch.uk
Headteacher: Dr M Curnock
Comprehensive Voluntary Aided (Co-educational)
11–16 Roman Catholic
School Number: 881-4680

Opportunities to visit

Open Week: 3 – 7 October 2011
Please contact the school for further details.
School tours: During Open Week at 9.15am and 10.15am. No appointment necessary.

Published admission number Sept 2012: **150**
Published admission number Sept 2011: **150**
Applications received (all preferences) Sept 2011: **375**
Number on roll Jan 2011: **748**
In 2011 the last child was admitted under criterion 5

Admissions Policy◆

Applications are welcomed from parents who desire for their child(ren) a Christian education. In the event of oversubscription places will be allocated using the following criteria in the order given:

1. baptised Catholic† Looked After Children;
2. children from families # who are stated by their parish priest to be practising* Catholicst residing in the school's area: Basildon, Laindon, Wickford, Billericay, Canvey, Benfleet, Stanford-le-Hope, Grays, Tilbury and South Ockendon;
3. children stated by their parish priest to be baptised Catholics†;
4. other Looked After Children;
5. other children attending Catholic primary schools and living in the above areas. A list of schools is available from the school office;
6. remaining applications.

In the event of oversubscription within any of the above criteria, priority will be determined in the following order:

- children who at the time of admission will have a sibling‡ attending the school;
- non-baptised children of Catholic† families #, (applies to criteria 2, 5 and 6 only);
- those living closest to the school measured in a straight line from the school's main entrance to the home address. Straight line distances are calculated by the LA as described on page 10.

‡ LA Sibling definition applies. (see page 10)

† Catholic means a member of a church in communion with the See of Rome. This includes the Eastern Catholic churches. This will normally be evidenced by a certificate of baptism in a Catholic Church or a certificate of reception into the full communion of the Catholic Church.

A Catholic family is a family wherein at least one parent is a Catholic.

* A 'Practising Catholic' is defined as confirmed by the Priest's Reference Form.

◆ This school requires a Supplementary Information Form to be completed.

Waiting list held until: end of academic year.

Transport

Please note that the County Council no longer provides subsidised transport to denominational schools. Please refer to page 22 for more information.

The James Hornsby High School

Leinster Road, Laindon, Basildon SS15 5NX
Telephone: 01268 582400
Email: admin@jameshornsby.essex.sch.uk
Website: www.jameshornsby.essex.sch.uk
Headteacher: Mr C Hayes
Comprehensive Community (Co-educational)
11–16
School Number: 881-4000

Opportunities to visit

Open Evening: Wednesday 5 October 2011,
6.30pm – 8.30pm
School Tours: 11 – 13 October 2011,
10 am – 11am
Please contact the school office to book a place.

Published admission number Sept 2012: **180**
Published admission number Sept 2011: **180**
Applications received (all preferences) Sept 2011: **257**
Number on roll Jan 2011: **836**
In 2011 the last child was admitted under criterion 3

Admissions Policy

There is no guarantee of a place at the school.
In the event of oversubscription places will be allocated using the following criteria in the order given:

1. Looked After Children;
2. children with a sibling attending the school;
3. remaining applications.

In the event of oversubscription within any of the above criteria, priority will be determined by straight line distance from home to school, those living closest being given the highest priority. Exceptional medical circumstances (supported by medical evidence) may override the above criteria (other than Looked After Children).

Transport (Basildon Town Area)

If you reside in the Basildon Town area, transport will only be provided if you meet the distance criteria outlined on page 22 and your child will be attending the nearest school to your home address using the shortest walking route. If you would like to confirm the school for which you would be entitled to transport assistance please contact **0845 603 2200** and ask for the Education Transport & Awards Team.

Waiting list held until: end of autumn term.

Mayflower High School

Stock Road, Billericay CM12 0RT
 Telephone: (01277) 623171
 Email: educate@mayflowerhigh.essex.sch.uk
 Website: www.mayflowerhigh.essex.sch.uk
 Principal: Mr L Brumby
 Academy (Co-educational)
 Member of the Billericay Community Trust
 Specialist Science and Modern Foreign Languages
 College
 11–18
 School Number: 881-4471

Opportunities to visit

Open Evening: Thursday 6 October 2011,
 6.30pm – 9pm.
 Open Mornings and School Tours: Monday 10 –
 Thursday 13 October 2011 from 9am.
 Pre-booking is preferred. Please contact the school
 on 01277 623171.

Published admission number Sept 2012: **240**
 Published admission number Sept 2011: **240**
 Applications received (all preferences) Sept 2011: **680**
 Number on roll Jan 2011: **1471**
 In 2011 the last child was admitted under criterion 5

Admissions Policy

There is no guarantee of a place in the school.
 In the event of oversubscription places will be
 allocated using the following criteria in the order given:

1. Looked After Children;
2. children living in the priority admission area* with
 a sibling[‡] attending the school;
3. other children living in the priority admission
 area*;
4. children living outside the priority admission area*
 with a sibling[‡] attending the school;
5. remaining applications.

In the event of oversubscription within any of the
 above criteria, priority will be determined by straight
 line distance from home to school, those living closest
 being given highest priority. Straight line distances are
 calculated by the LA as described on page 10.

Exceptional medical circumstances supplied at the
 time of application from a doctor or other registered
 health professional setting out why the school is the
 most suitable and the difficulties that would be caused
 if the child attended and travelled to another school
 may override the above criteria (other than Looked
 After Children). Applications made on this basis will be
 considered by the school's School Admission Panel.

[‡] LA sibling definition applies (see page 10).

* A map of the defined priority admission area is
 available from the school.

Admissions to Sixth Form

Sixth Form Open Evening: Thursday 10 November 2011
 at 6.30pm.

Admission to the Sixth Form is available for all existing
 students, and up to 20 students to Year 12 who have
 not previously attended the school. All applicants
 must meet the minimum entry requirements for their
 chosen course of study. In addition, students must
 meet specific subject requirements. Full details are
 published in the Sixth Form Prospectus available
 from the school. In the event of oversubscription,
 applications will be prioritised in accordance with the
 above admissions policy.

Waiting list held until: end of autumn term.

Woodlands School, Basildon

Takely End, Kingswood, Basildon SS16 5BA
Telephone: (01268) 282146
Email: woodlands@btconnect.com
Website: www.woodlandsschool.essex.sch.uk
Headteacher: Mr A White
Comprehensive Community (Co-educational)
Specialist Performing Arts College
11–16
School Number: 881-4431

Opportunities to visit

Open Evening: Tuesday 4 October 2011
Headteacher's talk: 7pm
Open Week: 3 – 7 October 2011, 9am – 1.15pm and
2.15pm – 3.15pm
School Tours: During Open Week. No appointment
necessary.

Published admission number Sept 2012: **300**
Published admission number Sept 2011: **300**
Applications received (all preferences) Sept 2011: **683**
Number on roll Jan 2011: **1486**
In 2011 the last child was admitted under criterion 3

Admissions Policy

There is no guarantee of a place in the school. In the event of oversubscription places will be allocated using the following criteria in the order given:

1. Looked After Children;
2. children with a sibling attending the school;
3. remaining applications.

In the event of oversubscription within any of the above criteria, priority will be determined by straight line distance from home to school, those living closest being given the highest priority. Exceptional medical circumstances (supported by medical evidence) may override the above criteria (other than Looked After Children).

Transport (Basildon Town Area)

If you reside in the Basildon Town area, transport will only be provided if you meet the distance criteria outlined on page 22 and your child will be attending the nearest school to your home address using the shortest walking route. If you would like to confirm the school for which you would be entitled to transport assistance please contact **0845 603 2200** and ask for the Education Transport & Awards Team.

Waiting list held until: end of autumn term.

Alec Hunter Humanities College

Stubbs Lane, Braintree CM7 3NR
 Telephone: (01376) 321813
 Email: admin@alechunter.essex.sch.uk
 Website: www.alechunter.com
 Acting Headteacher: Mr T Lawn
 Comprehensive Community (Co-educational)
 Specialist Humanities College
 11–16
 School Number: 881-4350

Opportunities to visit

Open Evening: Thursday 29 September 2011, 7pm
 Open Days: 3 – 7 October 2011. Please contact the college to book an appointment.

Published admission number Sept 2012: **240**
 Published admission number Sept 2011: **240**
 Applications received (all preferences) Sept 2011: **343**
 Number on roll Jan 2011: **1059**
 In 2011 the last child was admitted under criterion 7

Admissions Policy

There is no guarantee of a place for children living in the priority admission area. In the event of oversubscription places will be allocated using the following criteria in the order given:

1. Looked After Children;
2. children living in the outlying priority admission area* of the school with a sibling attending the school;
3. children living in the outlying priority admission area* of the school;
4. children living in the Town priority admission area* of the school with a sibling attending the school;
5. children living in the Town priority admission area* of the school;
6. children living outside of the school's priority admission area* with a sibling attending the school;
7. remaining applications.

In the event of oversubscription within any of the above criteria, priority will be determined by straight line distance from home to school, those living closest being given highest priority. Exceptional medical circumstances (supported by medical evidence) may override the above criteria (other than Looked After Children).

* A map showing the outlying priority admission area and the town priority admission area is available from the school or School Planning and Admissions, Essex County Council.

Transport (Braintree Town Centre)

If you reside in the Braintree Town area, transport will only be provided if you meet the distance criteria outlined on page 22 and your child will be attending the school in whose priority area you live. If you would like to confirm the school for which you would be entitled to transport assistance please contact 0845 603 2200 and ask for the Education Transport & Awards Team.

Waiting list held until: end of autumn term.

Hedingham School and Sixth Form

Yeldham Road, Sible Hedingham, Halstead CO9 3QH
 Telephone: (01787) 460470
 Email: admin@hedingham.essex.sch.uk
 Website: www.hedingham.essex.sch.uk
 Headteacher: Mr J Panayi
 Comprehensive Community (Co-educational)
 Specialist Mathematics and Computing College
 11-18
 School Number: 881-4026

Opportunities to visit

Open Evening: Thursday 6 October 2011,
 6.30pm – 9pm
 Headteacher's talk: 7.30pm
 School Tours: 18 – 20 October 2011
 Please contact the school to book a place.

Published admission number Sept 2012: **196**
 Published admission number Sept 2011: **196**
 Applications received (all preferences) Sept 2011: **319**
 Number on roll Jan 2011: **1182**
 In 2011 the last child was admitted under criterion 5

Admissions Policy

There is no guarantee of a place for children living in the priority admission area. In the event of oversubscription places will be allocated using the following criteria in the order given:

1. Looked After Children;
2. children living in the priority admission area with a sibling attending the school;
3. other children living in the priority admission area;
4. children living outside the priority admission area with a sibling attending the school;
5. remaining applications.

In the event of oversubscription within any of the above criteria priority will be determined by straight line distance from home to school, those living closest being given highest priority. Exceptional medical circumstances (supported by medical evidence) may override the above criteria (other than Looked After Children).

Admissions to Sixth Form

Sixth Form Open Evening: Thursday 24 November 2011 at 6.30pm

To enrol on an AS programme students should have a minimum of 5 A*-C grades, including Maths and English. For certain subjects, students will need a B grade in that subject at GCSE to study it at A Level. BTEC Level 2 courses are available for students who do not have the minimum requirements for A level courses. Occasionally students can combine a Level 2 BTEC with an A Level. The Football and Dance Academies cater for students with particular talent in these areas and a commitment to intensive training.

Waiting list held until: end of autumn term.

The Honywood Community Science School

Westfield Drive, Coggeshall, Colchester CO6 1PZ

Telephone: (01376) 561231

Email: admin@honywood.essex.sch.uk

Website: www.honywoodschoo.com

Headteacher: Mr S Mason

Academy (Co-educational)

11–16

School Number: 881-4400

Opportunities to visit

Open Evening: Thursday 6 October 2011,

6pm – 8.30pm

School Tours: The school will be open to the community in the weeks commencing 10 and 17 October 2011 and twice daily you will be able to see learning as it happens. Please phone the school to book a place.

Published admission number Sept 2012: **210**

Published admission number Sept 2011: **210**

Applications received (all preferences) Sept 2011: **561**

Number on roll Jan 2011: **1016**

In 2011 the last child was admitted under criterion 5

Admissions Policy

There is no guarantee of a place for children living in the priority admission area. In the event of oversubscription places will be allocated using the following criteria in the order given:

1. Looked After Children;
2. children living in the priority admission area with a sibling attending the school;
3. other children living in the priority admission area;
4. children living outside the priority admission area with a sibling attending the school;
5. remaining applications.

In the event of oversubscription within any of the above criteria priority will be determined by straight line distance from home to school, those living closest being given highest priority. Exceptional medical circumstances (supported by medical evidence) may override the above criteria (other than Looked After Children).

Waiting list held until: end of autumn term.

Maltings Academy

Spinks Lane, Witham CM8 1EP
 Telephone: (01376) 512911
 Email: contactus@maltingsacademy.org
 Website: www.maltingsacademy.org
 Headteacher: Mr J Szynal
 Academy (Co-educational)
 Science and Sports Specialism
 11–18
 School Number: 881-6907

Opportunities to visit

Open Evening: Thursday 22 September 2011
 5.30pm – 7.30pm
 School tours: Tours of the Academy can be arranged at any time by appointment by contacting the main reception of the Academy on 01376 512911.

Published admission number Sept 2012: **180**
 Published admission number Sept 2011: **180**
 Applications received (all preferences) Sept 2011: **231**
 Number on roll Jan 2011: **920**
 In 2011 the last child was admitted under criterion 4

Admissions Policy

Where applications exceed the number of places available the following criteria will be applied, in the order set out below, to decide which children to admit:

1. Looked After Children;
2. where the child's siblings[‡] currently attend the Academy at the closing date for applications, with a reasonable expectation that the older child will still be at the Academy at the time the younger child is admitted. The final year for this purpose will be Year 13 or Year 11 if the sibling is not staying on to the Sixth Form.
3. where the child attends one of the following partner primary schools: Elm Hall Primary, Hatfield Peverel St Andrew's Junior, Holy Family Catholic Primary, Howbridge C of E Junior, Powers Hall Junior, Rivenhall C of E Primary and Templars Junior and Chipping Hill Primary schools;
4. on the basis of proximity to the Academy using straight line measurement from the main entrance of the Academy to the main entrance to the child's home. This principle will also be used as a tie-breaker when the planned admission number is reached within one of the earlier criteria. In the event that a tie-break situation occurs for the distance criterion, names will be drawn out of a hat.

[‡] LA sibling definition applies (see page 10).

Admissions to Sixth Form

The Academy will have an admission number in Year 12 of 200 minus any pupils eligible to transfer from the Academy's own Year 11. The anticipated number to admit for external applications in 2012 is 25. Admission arrangements into the Sixth Form can be found in the Sixth Form Prospectus, which is available from the Academy.

Waiting list held until: end of autumn term.

New Rickstones Academy

Conrad Road, Witham, CM8 2SD
 Telephone: (01376) 515756
 Email: contactus@newrickstonesacademy.org
 Website: newrickstonesacademy.org
 Headteacher: Miss D Bull
 Academy (Co-educational)
 Arts and Mathematics Specialism
 11–18
 School Number: 881-6905

Opportunities to visit

Open Day and Evening: Tuesday 20 September 2011
 School Tours: Tuesdays 13, 20 and 27 September and
 4, 11 and 18 October 2011. Please contact the school
 for an appointment.

Published admission number Sept 2012: **180**
 Published admission number Sept 2011: **180**
 Applications received (all preferences) Sept 2011: **193**
 Number on roll Jan 2011: **761**
 In 2011 the last child was admitted under criterion 4

Admissions Policy

Where applications for admission exceed the number of places available, the following criteria will be applied, in the order set out below, to decide which children to admit:

1. Looked After Children;
2. where the child's siblings[‡] currently attend the Academy at the closing date for applications, with a reasonable expectation that the older child will still be at the Academy at the time the younger child is admitted. The final year for this purpose will be Year 13 or Year 11 if the sibling is not staying on to the Sixth Form;
3. children who have a serious medical or social need, or physical or psychological condition which makes it essential that they attend this school. Written evidence from an appropriate registered professional must be provided at the time of application and must set out why the Academy is the only school that can meet the young person's needs or circumstances;
4. on the basis of proximity to the Academy using straight line measurement from the main entrance of the Academy to the main entrance to the child's home. This principle will also be used as a tie-breaker when the planned admission number is reached within one of the earlier criteria. In the event that a tie-break situation occurs for the distance criterion, names will be randomly selected.

[‡] LA sibling definition applies (see page 10).

Admissions to Sixth Form

The Academy will have an admission number in Year 12 of 100 minus any pupils eligible to transfer from the Academy's own Year 11. If 100 or more students are eligible to transfer from the Academy's Year 11 no external students will be admitted.

Admission arrangements into the Sixth Form can be found in the Sixth Form Prospectus, which is available from the Academy. Minimum entrance requirements will be based on GCSE grades or other measures of prior attainment. Where there are more eligible external applicants for any available Sixth Form places than places available, the school's oversubscription criteria will be applied.

Waiting list held until: end of the academic year.

Notley High School and Braintree Sixth Form

Notley Road, Braintree CM7 1WY
 Telephone: (01376) 556300
 Email: enquiries@notley-high.essex.sch.uk
 Website: www.notleyhigh.com
 Headteacher: Mr S Thompson
 Academy (Co-educational)
 Specialist Technology and Applied Learning School
 11–18
 School Number: 881-4420

Opportunities to visit

Open Evening: Thursday 6 October 2011
 School Tours: 10 – 14 October 2011
 9am – 10am.
 Please contact the school office to book a place.

Published admission number Sept 2012: **240**
 Published admission number Sept 2011: **240**
 Applications received (all preferences) Sept 2011: **577**
 Number on roll Jan 2011: **1417**
 In 2011 the last child was admitted under criterion 5

Admissions Policy

There is no guarantee of a place for children living in the priority admission area. In the event of oversubscription places will be allocated using the following criteria in the order given:

1. Looked After Children;
2. children living in the outlying priority admission area* of the school with a sibling attending the school;
3. children living in the outlying priority admission area* of the school;
4. children living in the Town priority admission area* of the school with a sibling attending the school;
5. children living in the Town priority admission area* of the school;
6. children living outside of the school's priority admission area* with a sibling attending the school;
7. remaining applications.

In the event of oversubscription within any of the above criteria, priority will be determined by straight line distance from home to school, those living closest being given highest priority. Exceptional medical circumstances (supported by medical evidence) may override the above criteria (other than Looked After Children).

* A map showing the outlying priority admission area and the town priority admission area is available from the school or School Planning and Admissions, Essex County Council.

Admissions to Sixth Form

The school is proposing to admit 150 students each year to the Braintree Sixth Form, including at least 50 external applicants. Admission to the Sixth Form will be by reference to qualification to a particular Sixth Form programme of study. The Sixth Form prospectus will publicise the range of programmes, the specific entrance requirements, the number of places on each programme and, in the event of oversubscription, the tie-break mechanism that will be applied.

Transport (Braintree Town area)

If you reside in the Braintree Town area, transport will only be provided if you meet the distance criteria outlined on page 21 and your child will be attending the school in whose priority area you live. If you would like to confirm the school for which you would be entitled to transport assistance please contact 0845 603 2200 and ask for the Education Transport & Awards team.

Waiting list held until: end of autumn term.

The Ramsey College

Colne Road, Halstead CO9 2HR
Telephone: (01787) 472481
Email: office@ramsey.essex.sch.uk
Website: www.ramsey.essex.sch.uk
Headteacher: Mr M Murray
Comprehensive Community (Co-educational)
Specialist Sports College
11–16
School Number: 881-4025

Opportunities to visit

Open Evening: Thursday 29 September 2011,
7pm – 9pm
Headteacher's talks: 7pm and 8pm
College Tours: By appointment. Please contact
Mrs Downes at the College to book a place.

Published admission number Sept 2012: **150**
Published admission number Sept 2011: **150**
Applications received (all preferences) Sept 2011: **193**
Number on roll Jan 2011: **599**
In 2011 the last child was admitted under criterion 5

Admissions Policy

There is no guarantee of a place for children living in the priority admission area. In the event of oversubscription places will be allocated using the following criteria in the order given:

1. Looked After Children;
2. children living in the priority admission area with a sibling attending the school;
3. other children living in the priority admission area;
4. children living outside the priority admission area with a sibling attending the school;
5. remaining applications.

In the event of oversubscription within any of the above criteria priority will be determined by straight line distance from home to school, those living closest being given highest priority. Exceptional medical circumstances (supported by medical evidence) may override the above criteria (other than Looked After Children).

Waiting list held until: end of autumn term.

Tabor Science College

Panfield Lane, Braintree CM7 5XP
 Telephone: (01376) 323701
 Email: admin@taborscience.com
 Website: www.taborscience.com
 Headteacher: Mr S T Clark
 Comprehensive Community (Co-educational)
 Specialist Science College
 11–16
 School Number: 881-4470

Opportunities to visit

Open Day: Saturday 1 October 2011,
 9.30am – 12.30pm

Headteacher's presentations: 10am and
 11am in Studio

Open Morning: Wednesday 5 October 2011,
 8.30am – 10.30pm. Brief presentation at 9.30am

School Tours: On Open Day and Morning, no
 appointment necessary. On other days by appointment
 only, please contact the school to book.

Published admission number Sept 2012: **210**

Published admission number Sept 2011: **210**

Applications received (all preferences) Sept 2011: **490**
 Number on roll Jan 2011: **1061**

In 2011 the last child was admitted under criterion 7

Admissions Policy

There is no guarantee of a place for children living in the priority admission area. In the event of oversubscription places will be allocated using the following criteria in the order given:

1. Looked After Children;
2. children living in the outlying priority admission area* of the school with a sibling attending the school;
3. children living in the outlying priority admission area* of the school;
4. children living in the Town priority admission area* of the school with a sibling attending the school;
5. children living in the Town priority admission area* of the school;
6. children living outside of the school's priority admission area* with a sibling attending the school;
7. remaining applications.

In the event of oversubscription within any of the above criteria, priority will be determined by straight line distance from home to school, those living closest being given highest priority. Exceptional medical circumstances (supported by medical evidence) may override the above criteria (other than Looked After Children).

* A map showing the outlying priority admission area and the town priority admission area is available from the school or School Planning and Admissions, Essex County Council.

Transport (Braintree Town area)

If you reside in the Braintree Town area, transport will only be provided if you meet the distance criteria outlined on page 21 and your child will be attending the school in whose priority area you live. If you would like to confirm the school for which you would be entitled to transport assistance please contact 0845 603 2200 and ask for the Education Transport and Awards team.

Waiting list held until: end of autumn term.

Anglo European School

Willow Green, Ingatestone CM4 0DJ
 Telephone: (01277) 354018
 Email: enquiries@aesessex.co.uk
 Website: www.aesessex.co.uk
 Headteachers: Mr D Barrs and Mrs J Martin
 Comprehensive Foundation (Co-educational)
 Specialist Language College
 11–18
 School Number: 881-5442

Opportunities to visit

Open Evening: Thursday 29 September 2011,
 5pm – 8.30pm
 Headteachers' talks: 5.30pm, 6.30pm and 7.30pm.
 School Tours: 4, 5, 6, 10 and 11 October 2011, 9.15am
 and 11.15am. Please contact the school office after 29
 September to book a place.

Published admission number Sept 2012: **210**
 Published admission number Sept 2011: **210**
 Applications received (all preferences) Sept 2011: **609**
 Number on roll Jan 2011: **1357**
 In 2011 the last child was admitted under criterion 4

Admissions Policy♦

The following criteria, in the order given, will be used to determine which children to admit:

1. Looked After Children;
2. children permanently residing in the priority admission area of the Parishes of Ingatestone, Mountnessing and Margaretting (map available on request) or on roll for Year 6 at one of the following feeder primary schools: Ingatestone and Fryerning Junior, Margaretting Primary and Mountnessing Primary schools;
3. children with a brother or sister‡ attending the school at the time of their application and where that sibling was admitted between years 7 and 11 and is reasonably expected to still be attending at the time of the applicant's own admission;
4. children who demonstrate they have benefitted from a strong and positive influence of a language and culture* other than English. This will include a significant period of permanent residence outside the UK and/or a direct, substantial and sustained experience of a language and culture* other than English.
5. any other applications.

In the event of oversubscription within criteria 1, 2, 3 or 5 or in the event of a tie within criterion 4, places will be allocated on the basis of random allocation to ensure the school maintains its regional nature in keeping with the original vision of the school.

*'Culture' is a community or country's shared traditions, values and attitudes where English is not the dominant language of that community or culture. A 'cultural experience' is an experience that involves the child actively participating in such traditions and immersing themselves in such values and attitudes. The child's interests, hobbies or membership of societies are not relevant.

‡ Siblings include natural siblings, step-siblings and those living in the same household as a child of the family.

♦ For applications under criterion 4 this school requires a Supplementary Information Form to be completed and verified by 4 November 2011. Supplementary Information Forms submitted under criterion 4 without verification or received after 4 November 2011 will be ranked as criterion 5.

Waiting list held until: end of autumn term.

Admissions to Sixth Form

Sixth Form Open Evening: Thursday 10 November 2011 at 6:30pm. The number intended to admit externally into Lower Sixth each year is 50. This is in addition to our internal candidates. Where the Sixth Form is oversubscribed the following criteria will be applied:

1. students who have met the published matriculation requirements;
2. applicants with a sibling in the school at the time of joining the Sixth Form;
3. students taking the full International Baccalaureate Diploma.

Students must show evidence of potential for success in the courses offered. The school will make individual assessments for students with overseas qualifications.

Brentwood County High School

Shenfield Common, Brentwood CM14 4JF
 Telephone: (01277) 238900
 Email: bchs@bchs.essex.sch.uk
 Website: www.bchs.essex.sch.uk
 Headteacher: Mrs C Mason
 Comprehensive Foundation (Co-educational)
 Specialist Science, Maths & Computing College
 11–18
 School Number: 881-5459

Opportunities to visit

Open Day: Saturday 1 October 2011,
 10.30am – 3pm
 Headteacher's talks: at regular intervals throughout
 the day. Tickets available on arrival.
 School Tours: Wednesday 5, Tuesday 11 and Thursday
 13 October 2011, 9.15am – 11am. Please contact
 Reception to book a place.

Published admission number Sept 2012: **243**
 Published admission number Sept 2011: **243**
 Applications received (all preferences) Sept 2011: **722**
 Number on roll Jan 2011: **1390**
 In 2011 the last child was admitted under criterion 3

Admissions Policy ♦

Main Criteria for Admission

219 pupils will be admitted according to the following criteria:

1. Looked After Children;
- 2a. children living in the priority admission area* (this includes the former catchment area, the five Parishes of Kelvedon Hatch, Blackmore, Doddinghurst, Navestock, Stondon Massey and a specified area around Ongar as detailed on a map in the school office);
- 2b. children attending the following schools: Hogarth Primary, Holly Trees Primary, Warley Primary, West Horndon Primary, Kelvedon Hatch Community Primary, Doddinghurst CE (VC) Junior, Blackmore Primary, Chipping Ongar Primary, High Ongar Primary, Shelley Primary, Dr Walker's CE (VC) Primary, Fyfield, Moreton CE VA Primary, Stapleford Abbots Primary, St Peter's CE (VA) Primary, South Weald, Bulphan CE (VC) Primary, St Thomas of Canterbury CE Junior and Bentley St Paul's Primary schools;

3. children with siblings‡ currently attending the school, with a reasonable expectation that these siblings‡ will still be attending at the time of admission;
4. exceptional medical reasons (supported by written medical evidence supplied at the time of application);
5. distance as the crow flies, those living closest to the school being given priority. Straight line distances are calculated by the LA as described on page 10.

In the event of over subscription within any of the above criteria, priority will be determined by distance as the crow flies, those living closest to the school being given priority.

* The priority admissions area has been enlarged to include the entire priority admission area served by St Peter's CE (VA) Primary and Holly Trees Primary schools, both previously partly within a section of the priority admissions area served by Sawyers Hall College.

‡ Siblings are defined as biological siblings, or children living in the same family unit at the same address.

Criteria for Admission via Information Technology Aptitude Test

There are 24 places available for children who demonstrate an aptitude in Information Technology. The aptitude test will take place on Saturday 12 November 2011. Those who obtain the pass mark will be offered a place in rank order of aptitude. If children are ranked equally, places will be offered in accordance with criterion 5 of the main criteria for admission.

Children taking the Information Technology Aptitude Test may also qualify for a place under the main criteria for admission. If this is the case, they will enter under this main category, as this is the overriding criterion.

If fewer than 24 students take the Information Technology Aptitude Test or fewer than 24 students gain the pass mark, then the spaces remaining will be offered under the main criterion to obtain the intended overall number to admit of 243.

♦ To be considered for a place under the aptitude criterion you need to complete the school's Supplementary Information Form.

Brentwood County High School continued

Admissions to Sixth Form

Year 11 Guided Choices Evening: Tuesday 22
November 2011, 7.30pm – 9pm.

The Sixth Form is open to all existing students, provided they meet the entry requirements which are outlined in the Sixth Form prospectus, given to them early in year 11. Remaining places in the Sixth Form will be filled by up to 12 external applicants in accordance with the oversubscription criteria 1, 3, 4 and 5 above, subject to applicants fulfilling the individual requirements of suitable courses.

Waiting list held until: end of academic year.

Brentwood Ursuline Convent High School

Queens Road, Brentwood CM14 4EX
 Telephone: (01277) 227156
 Email: admin@buchs.co.uk
 Website: www.buchs.co.uk
 Headteacher: Miss V Squirrell
 Comprehensive Voluntary Aided Roman Catholic (Girls)
 Specialist Performing Arts School
 11–18
 School Number: 881-5461

Opportunities to visit

Open Evening: Thursday 6 October 2011
 Open Mornings: Thursday 13 and Friday 14 October
 2011, 9.30am – 12.15pm

Published admission number Sept 2012: **166**
 Published admission number Sept 2011: **166**
 Applications received (all preferences) Sept 2011: **414**
 Number on roll Jan 2011: **1001**
 In 2011 the last child was admitted under criterion H

Admissions Policy♦

The school admits up to 10% on a basis of musical aptitude. Musical aptitude will be determined on the basis of a musical aptitude assessment and references from music teachers and/or schools. Priority will be given to those who show the most aptitude at audition.

In the event of oversubscription for the remaining places, the following criteria will apply in order. As the school is oversubscribed by Catholics the 'practise criteria' will be used:

- A. Looked After Girls from Catholic* families and baptised Catholic* Looked After Girls;
- B. girls from families who are stated by their parish priest to be practising** Catholics* residing in the local parishes of Brentwood, Hutton, Warley, Ingatestone, Ongar, Gidea Park (Christ the Eternal High Priest), Harold Hill (St Dominic's), Harold Hill (Most Holy Redeemer) or Billericay (Holy Redeemer). A parish boundary map is available through contact with the school;
- C. girls from families who are stated by their parish priest to be practising** Catholics* residing in other parishes;
- D. girls stated by their parish priest to be baptised Catholics*;

- E. girls who are catechumens. These are girls who wish to be baptised as Catholics and have been accepted into the Order of Catechumens by the appropriate liturgical rite;
- F. girls who are members of other Eastern Christian Churches;
- G. other Looked After girls;
- H. baptised girls, whose parents' commitment to Christian faith and practice is confirmed, in writing, by their minister or religious leader;
- I. other applications.

In the event of oversubscription within any of the above criteria, the following priority will be applied in order:

- i. those with sisters‡ already in the school;
- ii. the exceptional social, medical or pastoral need of a child, where evidence is provided by an appropriate professional at the time of application, may increase the priority of their application within the relevant category;
- iii. distance as measured by a straight line from home to school, with those living closest being given priority. Straight line distances are calculated by the LA as described on page 10.

‡ A sister is defined as a sister, step-sister, adopted sister or a girl in long-term fostering, living at the same address, who is attending the school at the time of application, and for whom there is a reasonable expectation that she will be attending at the time of the proposed admission.

* 'Catholic' means a member of a Church in full communion with the See of Rome. This includes the Eastern Catholic Churches.

** A 'Practising Catholic' is defined as confirmed by the Priest's Reference Form.

♦ This school requires a Supplementary Information Form to be completed.

Brentwood Ursuline Convent High School continued

Admissions to Sixth Form

The Sixth Form is available for all existing students subject to them fulfilling the individual requirements of suitable courses. Remaining places in the Sixth Form of the school will be distributed in accordance with the oversubscription criteria, subject to applicants fulfilling the individual requirements of suitable courses. The number of external applicants intended to admit is 30.

The school operates a rolling waiting list.

Transport

Please note that the County Council no longer provides subsidised transport to denominational schools. Please refer to page 22 for more information.

For transport enquiries please contact Nelsons Independent Bus Services on 01268 734084.

Sawyers Hall College

Sawyers Hall Lane, Brentwood CM15 9DA
Telephone: (01277) 220808
Email: enquiries@sawyershall.org.uk
Website: www.sawyershall.org.uk
Headteacher: Mr Stephen Capper
Comprehensive Foundation (Co-educational)
11-18
School Number: 881-5425

Please note that following a statutory consultation Sawyers Hall College will close on 31 August 2012. Because of this there will not be a Year 7 at the school from September 2011. Applications for transfer from Year 6 into Sawyers Hall College cannot be accepted. Information about other schools in the area is given in the Brentwood section of this book.

Shenfield High School

Alexander Lane, Shenfield, Brentwood CM15 8RY
 Telephone: 01277 219131
 Email: shs@shenfield.essex.sch.uk
 Website: www.shenfield.essex.sch.uk
 Headteacher: Ms C Herman
 Comprehensive Foundation (Co-educational)
 Specialist Business & Enterprise and Maths & Computing School
 11–18
 School Number: 881-5467

Opportunities to visit

Open Evening: Thursday 6 October 2011 from 5pm
 Headteacher's talks: 5.15pm, 6.15pm and 7.15pm
 Open Mornings: Tuesday 11 and Monday 17 October 2011 with school tours from 9:05am to 9.30am.
 No appointment necessary.

Published admission number Sept 2012: **228**
 Published admission number Sept 2011: **248**
 Applications received (all preferences) Sept 2011: **769**
 Number on roll Jan 2011: **1544**
 In 2011 the last child was admitted under criterion 7

Admissions Policy

In the event of oversubscription, places will be offered strictly according to the following criteria:

1. Looked After Children;
2. where a child has a brother or sister[‡] attending the school;
3. where there are medical grounds and/or strong social reasons (supported by a doctor's certificate or other appropriate professional) for admitting the child;
4. children living* in the existing priority admissions area for the school (map available on request);
5. children who at the time of application are registered in Year 6 in one of the following primary schools: Blackmore Primary, Chipping Ongar Primary, Doddinghurst CE (VC) Junior, Larchwood Primary, Long Ridings Primary, St Mary's CE (VA) Primary, Shenfield, St Peter's CE (VA) Primary, South Weald, St Thomas of Canterbury CE Junior, Kelvedon Hatch Primary, Bentley St Paul's CE Primary, High Ongar Primary;

6. other children residing in the area known as Five Parishes (Blackmore, Doddinghurst, Kelvedon Hatch, Navestock, Stondon Massey) or in parts of Nine Ashes, Marden Ash, High Ongar and Chipping Ongar, not attending those primary schools listed above (map available on request);
7. proximity of home to school by straight line distance, with those living nearer being accorded the higher priority. Straight line distances are calculated by the LA as described on page 10.

In the event of oversubscription in criteria 1–6, places will be offered in accordance with criterion 7.

* Living in the area shall mean "main place of permanent residence of the child and family both at the time of application and admission and for the foreseeable future". The school reserves the right to seek proof of residence at the given address.

[‡] Brother or sister defined as "each of two or more children, having one or both parents in common, and living in the same family unit in the same family household and address as the other children". The older child must be attending the school at the time of application and reasonably expected to still be at the school at the time the younger child is admitted.

Admissions to Sixth Form

Sixth Form Open Evening: please contact the school for details. Students will be able to transfer into Shenfield High School's Lower Sixth Form if they achieve the required point scores for the course they wish to study. These are based upon English Language and Mathematics GCSEs plus the six best other subjects taken at GCSE (or the equivalent level) as outlined in the relevant Sixth Form Prospectus, which is published annually by the School. The number of external applicants intended to admit is 40.

Waiting list held until: end of academic year.

St Martin's School

Hanging Hill Lane, Hutton, Brentwood CM13 2HG
 Telephone: (01277) 238300
 Email: enquiries@st-martins.essex.sch.uk
 Headteacher: Mike O'Sullivan
 Academy (Co-educational)
 Specialist Technology College
 11–18
 School Number: 881-5433

Opportunities to visit

Open Evening: Tuesday 27 September 2011,
 6.15pm – 9pm
 Headteacher's talk: 6.15pm, 6.45pm, 7.15pm,
 7.45pm, 8.15pm and 8.45pm
 School Tours: Morning tours and Headteacher's talk by
 appointment in September and October 2011. Please
 ring Jan Bunyard on 01277 238303.

Published admission number Sept 2012: **272**
 Published admission number Sept 2011: **272**
 Applications received (all preferences) Sept 2011: **900**
 Number on roll Jan 2011: **1786**

The criteria for admissions to Year 7 in September 2012 given below are different to those published for admissions to Year 7 in September 2011. Therefore, a comparison cannot be made with the criterion under which the last place was offered in 2011.

Admissions Policy

In the event of oversubscription, places will be allocated in rank order according to the following criteria:

1. Looked After Children;
2. children resident* within the priority admission area (as defined in criterion 4) with siblings‡ currently attending the school with a reasonable expectation that these siblings‡ will still be attending at the time of admission;
3. children living outside the priority admission area with siblings‡ currently at the school and with a reasonable expectation that these siblings‡ will still be attending at the time of admission;
4. children resident* within the school's priority admission area which includes parts of Brentwood and Hutton together with Ingrave, Herongate and Five Parishes of Blackmore, Doddinghurst, Kelvedon Hatch, Navestock and Stondon Massey (map available at the school).

5. children who at the time of application are registered in Year 6 at one of the following primary schools: Hutton All Saints' CE, Hogarth Primary, Ingrave Johnstone CE (VA), Long Ridings, St Joseph the Worker Catholic, St Mary's CE (VA), Shenfield, St Thomas of Canterbury CE Junior and Willowbrook (Hutton) Primary schools;
6. exceptional medical reasons, supported by evidence at the time of application from a doctor or other registered health professional setting out why the preferred school is the most suitable and the difficulties that would be caused if the child attended and had to travel to another school;
7. other children.

In all cases of oversubscription in any of the above categories places will be allocated according to the shortest distance (as the crow flies) from the child's home to the school. Straight line distances are calculated by the LA as described on page 10.

‡ A sibling is defined as "a child who has a brother, sister, step-brother or step-sister living with one or both parents in common, living in the same family unit in the same household and address".

* The term 'resident' is defined as children living with parents or legal guardians in the area at the time of application and for whom there is a reasonable expectation that they will still be living there at the time of admission. Proof of residence will be required.

In the unlikely event of two or more children living the same distance from the school, places will be allocated by 'the drawing of lots'.

Waiting list held until: end of academic year.

St Martin's School (continued)

Admissions to Sixth Form

The prospective Sixth Form Evening will be held on 16 November 2011 at 6.30pm. Further details will be available from the school in due course.

The school's Sixth Form has an anticipated total capacity of 436 students: this includes students studying in either Year 12 or Year 13. Each year the school expects to admit students into Year 12 who are not on the roll of the school in Year 11. The published number to admit into the Sixth Form is 1 but this is the minimum number of students expected to join the school in Year 12 and in recent years the number joining the school has been significantly higher. Except in exceptional personal circumstances, all students transferring into Year 12 study a programme of 4 GCE A Level options plus a core programme incorporated into the AQA Baccalaureate. The oversubscription criteria are published in the relevant Sixth Form Handbook and places will be allocated on courses to those students best qualified by virtue of their GCSE results and in the event of oversubscription, the criteria stated fully in the Sixth Form Handbook for the relevant year of entry will be applied.

Students will be able to transfer from St Martin's School Year 11 into the Sixth Form if:

They achieve an average point score of 5.1 from all qualifications normally taken at GCSE or the equivalent level from the best eight results and achieve the required grades for the subjects they wish to study as outlined in the relevant Sixth Form Handbook which is published annually by the school.

External students will be able to transfer into the St Martin's School Sixth Form if:

They achieve an average point score of 5.1 from all qualifications normally taken in their present school at GCSE or the equivalent level from the best eight results and achieve the required grades for the subjects they wish to study as outlined in the relevant Sixth Form Handbook which is published annually by the school.

Applicants with 4.8, 4.9 or 5.0 average points will be considered individually using the following criteria: medical factors; other special circumstances; subjects the applicant wishes to study; the subjects in which the applicant has achieved at least GCSE grade B.

In the unlikely event of two, or more, students meeting the entrance requirements to the Sixth Form distance criteria will be applied and if the students are living the same distance from the school places will be allocated by 'the drawing of lots'.

Explanatory notes:

a) The point system of Grade G = 1, Grade F = 2, Grade E = 3, Grade D = 4, Grade C = 5, Grade B = 6, Grade A = 7, and Grade A* = 8 will be used rather than the official GCSE point score as this is simpler to both understand and apply. GCSE Short Course results will count at half these values.

b) The term "qualifications normally taken" refers to the number of subjects usually studied by students who attend the same school as the "applicant for transfer". It would not, except in very unusual circumstances be usual for this to fall below eight subjects.

The Appleton School

Croft Road, South Benfleet SS7 5RN
 Telephone: (01268) 794215
 Email: info@theappletonschool.org
 Website: www.theappletonschool.org
 Headteacher: Mrs K Kerridge
 Academy (Co-educational)
 Business & Enterprise Specialist College
 11–16
 School Number: 881-5418

Opportunities to visit

Information meeting: Saturday 24 September 2011 at 2pm. Activities for children available.

The Headteacher's speech: Saturday 24 September 2011 at 2pm

Open Evening: Thursday 6 October 2011, at 7.30pm

School Tours: Wednesday 21 September – Tuesday 4 October 2011, 9.15am – 10.30am by appointment.

Please contact Mrs Boston or Mrs Smith at the school on 01268 794215 to make an appointment.

Published admission number Sept 2012: **240**

Published admission number Sept 2011: **240**

Applications received (all preferences) Sept 2011: **690**

Number on roll Jan 2011: **1193**

In 2011 the last child was admitted under criterion 5

Admissions Policy♦

In the event of oversubscription the following criteria are applied, in the order stated:

1. Looked After Children;
2. children living in the school's priority admission area (map available at the school);
3. children having a brother or sister† currently attending the school;
4. where there are exceptional medical grounds for admitting the child. Evidence from a doctor or other registered health professional must be provided setting out why the school is the most suitable and the difficulties that would be caused if the child attended and had to travel to another school;
5. up to 24 children who have an aptitude for languages;
6. proximity of home to school by straight line distance, those living nearest being accorded higher priority. Straight line distances are calculated by the LA as described on page 10.

In the event of oversubscription in criteria 1–5 the distance criterion defined in 6 will apply.

♦ To be considered for a place under the aptitude criterion you need to complete the school's Supplementary Information Form. The aptitude tests will take place on 4 and 11 November 2011.

† Siblings are defined as children with a brother or sister (or step-brother/sister) living at the same address at the time the application is submitted. The older child must be attending the school at the time the application is submitted and there must be a reasonable expectation that the older child will still be at the school at the time the younger child is admitted.

Waiting list held until: end of autumn term.

Castle View School

Meppel Avenue, Canvey Island SS8 9RZ
 Telephone: (01268) 696811
 Email: admin@castleview.essex.sch.uk
 Headteacher: Mrs G Thomas
 Comprehensive Foundation (Co-educational)
 Specialist Science College, 2nd Subject Maths
 11–16
 School Number: 881-5419

In January 2012 the school will relocate to:
 Foksville Road, Canvey Island, SS8 7AZ. Further
 information will be available at the Open Mornings.

Opportunities to visit

Open Morning: Saturday 1 October 2011,
 10.30am – 1.30pm
 Headteacher's talks: 10.45am and 12 noon
 School Tours: Mornings, 3 – 6 October 2011
 at 9:20am by appointment. Please sign up on Open
 Morning or contact Reception at the school to book
 a place.

Published admission number Sept 2012: **240**
 Published admission number Sept 2011: **240**
 Applications received (all preferences) Sept 2011: **311**
 Number on roll Jan 2011: **1145**
 In 2011 the last child was admitted under criterion 3

Admissions Policy

In the event of oversubscription the following criteria in
 the order given, will be applied:

1. Looked After Children;
2. children with a sibling‡ currently at the school with
 a reasonable expectation that the sibling will still
 be attending at the time of admission;
3. proximity of home to school by straight line
 distance, those living nearest being accorded
 higher priority. Straight line distances are
 calculated by the LA as described on page 10.

In the event of oversubscription within any of the
 above criteria, priority will be determined by straight
 line distance from home to school, those living closest
 being given the highest priority. Distances will be
 measured from the Foksville Road site.

Exceptional medical circumstances (supported by
 medical evidence at the time of application) may
 override the above.

‡ LA sibling definition applies (see page 10).

Waiting list held until: end of autumn term.

The Cornelius Vermuyden School

Dinant Avenue, Canvey Island SS8 9QS
 Telephone: (01268) 685011
 Email: admin@corver.rmplc.co.uk
 Website: www.corver.essex.sch.uk
 Headteacher: Mrs C P Skewes
 Comprehensive Foundation (Co-educational)
 Specialist Visual Arts College
 11–16
 School Number: 881-5420

Opportunities to visit

Open Day: Saturday 8 October 2011,
 10am – 1pm
 Headteacher's talk: 11am
 School Tours: 11 – 14 October 2011 at 8.30am
 Please contact the Headteacher's PA at the school to
 book a place.

Published admission number Sept 2012: **180**
 Published admission number Sept 2011: **180**
 Applications received (all preferences) Sept 2011: **300**
 Number on roll Jan 2011: **922**
 In 2011 the last child was admitted under criterion 3

Admissions Policy

In the event of oversubscription the following criteria,
 in the order given, will be applied:

1. Looked After Children;
2. children with a sibling‡ currently at the school with
 a reasonable expectation that the sibling‡
 will be attending at the time of admission;
3. proximity of home to school by straight line
 distance, those living nearest being accorded
 higher priority. Straight line distances are
 calculated by the LA as described on page 10.

In the event of oversubscription within any of the
 above criteria, priority will be determined by straight
 line distance from home to school, those living closest
 being given the highest priority.

Exceptional medical circumstances (supported by
 medical evidence) may override the above.

‡ LA sibling definition applies (see page 10).

Waiting list held until: at least the end of autumn term.

The Deanes School

Daws Heath Road, Thundersley, Benfleet SS7 2TD
Telephone: (01268) 773545
Email: admin@thedeanes.essex.sch.uk
Website: www.deanesschool.co.uk
Headteacher: Mrs J Atkinson
Comprehensive Foundation (Co-educational)
School Sports College
11–16
School Number: 881-5424

Opportunities to visit

Open Day: Saturday 24 September 2011,
9.30am – 1pm
School Tours: 26 September – 21 October 2011
at 9.30am. Please telephone the school on
01268 773545 to book a place.

Published admission number Sept 2012: **180**
Published admission number Sept 2011: **180**
Applications received (all preferences) Sept 2011: **402**
Number on roll Jan 2011: **957**
In 2011 the last child was admitted under the
remaining applications criterion.

Admissions Policy♦

Where applications for admission exceed the number of places available, the following criteria will be applied to decide which children to admit:

1. Looked After Children;
2. children living in the priority admission area of The Deanes School (map available from the school office);
3. children with a sibling‡ attending the school at the time of application with a reasonable expectation that the sibling‡ will still be attending at the time of admission;
4. up to 18 children in each year group who demonstrate aptitude in sport in a test to be conducted at the school;
5. remaining applications.

In the event of oversubscription within any of the above criteria, priority will be determined by straight line distance from home to school, those living closest being given highest priority. Straight line distances are calculated by the LA as described on page 10.

If a child lives at more than one address, it is the address of the parent / guardian that is in receipt of child benefit for the child that is considered as the home address. Verification may be required.

‡ LA sibling definition applies (see page 10).

♦ To be considered for a place under criterion 4 you need to complete the school's Supplementary Information Form

Waiting list held until: end of autumn term.

The King John School

Shipwrights Drive, Thundersley, Benfleet SS7 1RQ
 Telephone: (01702) 558284
 Email: kjs@thekjs.demon.co.uk
 Website: www.thekjs.essex.sch.uk
 Headteacher: Miss M Wilson
 Academy (Co-educational)
 Specialist Maths & Computing College
 11–18
 School Number: 881-5403

Opportunities to visit

Open Day: Saturday 1 October 2011, 9.30am – 1pm
 School Tours: Tuesday 11, Wednesday 12, Wednesday 19 and Thursday 20 October 2011
 Please contact the school for an appointment.

Published admission number Sept 2012: **320**
 Published admission number Sept 2011: **320**
 Applications received (all preferences) Sept 2011: **919**
 Number on roll Jan 2011: **1889**
 In 2011 the last child was admitted under criterion 6

Admissions Policy

Where applications for admission exceed the number of places available, the following criteria will be applied, in the order given:

1. Looked After Children;
2. children with a sibling[‡] attending the school at the time of application with a reasonable expectation that the older child will still be at the school at the time the younger child is admitted;
3. children living in the school's priority admission area;
4. children with exceptional medical reasons (supported by medical evidence outlining why the school is the most suitable and the difficulties that would be caused if the child attended and had to travel to another school);

Where, after applying the above criteria, there remain unfilled places, those places will be allocated in accordance with the following criteria:

5. up to 15 per cent of the published admission number may be allocated according to the results of a test of general ability, those scoring higher being awarded priority of entry. In the event of there being two or more children with tied scores being considered for the final selected place or places, then the child or children living nearest to the school will be offered the place(s). Children taking the entry test may later be offered a place

according to the distance criterion. If so, they will enter under this category because it is the main and overriding criterion;

6. any remaining places will be allocated according to the distance from the child's home address to the school*.

Shortest walking distance will be used as a tie breaker if the school is oversubscribed in one of the above categories.

‡ A sibling is defined as a brother or sister (or a step brother/sister) living at the same address at the time the application is submitted.

* Distance from the child's home address to the school's address on Shipwrights Drive will be measured by the shortest walking distance (calculated electronically using a computerised measurement system (which conforms to the Ordnance Survey through the National Mapping Agency data) along recognised roads and footpaths) with those living nearer being accorded the higher priority. The home address is considered to be the address at which the child resides on a permanent basis. If the child lives at more than one address, it is the address of the parent/guardian that is in receipt of child benefit for the child that is considered as the home address. In the event of a tie break for the exact distance criteria, the Governors Admission Committee will use the principle of drawing names out of a hat.

Entry Test date: **26 November 2011.**

Deadline for return of Entry Test Application Forms (SIF) (see important note below): 31 October 2011.

◆ This school requires a Supplementary Information Form to be completed for those applying under criterion 5. It is the responsibility of the parent or carer to ensure that the Supplementary Information Form (SIF) is received at The King John School no later than 31 October 2011. **Late applications will not be accepted.**

Your Supplementary Information Form (SIF) will be acknowledged within seven school days of receipt. Please contact the School if you do not receive an acknowledgement by 8 November 2011.

Waiting list held until: end of autumn term.

Transport

Please be aware that if you reside in Thundersley you may not be entitled to transport as you may live under three miles away by the shortest available walking route to the school.

The King John School continued

Admissions to Sixth Form

The number of external students to admit is 30 or until 200 places have been offered in Year 12. Admission to the Sixth Form will be determined in accordance with the following criteria:

1. the student must have attained the specific academic requirements for entry to the courses (details on the Sixth Form Preference Form);
2. there is a suitable course with a vacancy (maximum group size will normally be 25).

In the event of oversubscription the following criteria will be applied:

- (i) Looked After Children with the required qualifications for the courses they wish to study;
- (ii) that all previous criteria have been met;
- (iii) where there are compelling medical grounds (supported by a doctor's certificate);
- (iv) that applicants from 11-16 schools have priority over those from 11-18 schools, unless the course required is not available in the 11-18 school;
- (v) distance as in (6) above.

Should the admissions limit be exceeded in any previous criterion then the distance criterion will be applied in that category.

The Boswells School

Burnham Road, Chelmsford CM1 6LY
 Telephone: (01245) 264451
 Email: admissions@boswells.essex.sch.uk
 Website: www.boswells.essex.sch.uk
 Headteacher: Mr D Crowe
 Comprehensive Foundation (Co-educational)
 Specialist Performing Arts School and College
 11–18
 School Number: 881-5416

Admissions to Sixth Form

Sixth Form Open Evening: Wednesday 2 November 2011, 7pm – 9pm

Further details can be obtained from the school.

Waiting list held until: end of academic year.

Opportunities to visit

Open Evening: Wednesday 5 October 2011
 5.30pm – 8.30pm
 Headteacher's talks: 5.45pm and 6.45pm
 Open Week and School Tours: 3 – 7 October 2011.
 Tours at 9.15am each morning. No appointment necessary.

Published admission number Sept 2012: **248**
 Published admission number Sept 2011: **248**
 Applications received (all preferences) Sept 2011: **652**
 Number on roll Jan 2011: **1488**
 In 2011 the last child was admitted under criterion 4

Admissions Policy

Where applications for admission exceed the number of places available, the following criteria will be applied, in the order given, to determine which children to admit:

1. Looked After Children;
2. children with a sibling[‡] attending the school at the time of application, except those in year 13.
 With regard to the sibling link to a child in Years 11 and 12 at the time of application, a determination will be taken as to whether there is a reasonable expectation that the child will return to the school for a post 16 course of study;
3. where the child's habitual home is in the priority admission area (a map can be viewed at the school);
4. remaining applications.

In the event of oversubscription within any of the above criteria, priority will be determined by straight line distance from home to school, those living closest being given higher priority. Straight line distances are calculated by the LA as described on page 10. In the event of a tie for a place this will be drawn by a lottery.

[‡] LA sibling definition applies (see page 10).

Chelmer Valley High School

Court Road, Broomfield, Chelmsford CM1 7ER

Telephone: (01245) 440232

Email: school@chelmer.essex.sch.uk

Website: www.chelmervalleyhighschool.co.uk

Principal: Mr D Franklin

Academy (Co-educational)

Specialist Engineering College

11–18

School Number: 881-5429

Opportunities to visit

Open Evening: Tuesday 27 September 2011,

6.30pm – 9pm

Open Morning: Thursday 29 September 2011,

9.30am – 12pm School Tours: during the Open

Morning/Evening. No appointment necessary.

Published admission number Sept 2012: **196**

Published admission number Sept 2011: **196**

Applications received (all preferences) Sept 2011: **587**

Number on roll Jan 2011: **1140**

In 2011 the last child was admitted under criterion 3

Admissions Policy

Where applications for admission exceed the number of places available, the following criteria will be applied, in the order given, to determine which children to admit:

1. Looked After Children;
2. where the child has a sibling‡ currently attending the school at the time of admission;
3. where the child is living within the parishes of Good Easter, Mashbury, Pleshey, Chignal, Great and Little Waltham, Broomfield, Great and Little Leighs and Boreham which include the catchment areas of Boreham, Broomfield, Little Waltham CE (VA), Great Waltham CE (VC), Great Leighs, Ford End CE, Melbourne Park and Newlands Spring primary schools;
4. where there are medical grounds (supported by medical evidence) for admitting the child, provided that the child's needs can only be met by this school, or by additional provision agreed with the LA;
5. remaining applications.

In the event of oversubscription within any of the above criteria, priority will be determined by straight line distance from home to school, those living closest being given higher priority. Straight line distances are calculated by the LA as described on page 10.

‡ LA sibling definition applies (see page 10).

Admissions to Sixth Form

Students will be admitted into the Sixth Form at age 16, where the school agrees it is able to offer and resource for the student a programme of study from which he or she will benefit. Applicants will discuss suitable courses with senior staff and offers of places will be based upon the range of courses previously pursued and the levels achieved. As a general rule applicants for A/AS level courses should have a minimum of 5 GCSE grades A*– C including English and Maths, with at least a grade B in the subjects they wish to study. The Sixth Form Prospectus will indicate requirements in each subject. To continue with a course during Year 13 students will normally need to achieve a D grade or above at AS level unless there are particular exceptional circumstances. Applicants will sign an agreed working contract.

Where applications for admission exceed the 200 places available, the following criteria will be applied, in the order given, to determine which children to admit:

1. students currently attending the school;
2. students living in the catchment areas (see (3) above);
3. proximity of the student's home to school, with those living nearer being accorded the higher priority (as measured by straight line distance from home to school).

Waiting list held until: end of academic year.

Chelmsford County High School for Girls

Broomfield Road, Chelmsford CM1 1RW
 Telephone: (01245) 352592
 Email: office@cchs.essex.sch.uk
 Website: www.cchs.co.uk
 Headteacher: Mrs N Chapman
 Grammar Academy (Girls)
 Formerly a Specialist Technology, Music, English and
 Languages College
 11–18
 School Number: 881-5410

Opportunities to visit

Open Evenings:

Tuesday 27 September 2011, 5.30pm – 8pm
 Headteacher's presentation*: 6pm, 6.45pm and
 7.30pm. School tours from 5.30pm to 8pm.

Wednesday 5 October 2011 5.30pm – 7pm
 Headteacher's presentation*: 6.15pm and 7pm. School
 tours from 5.30pm – 7pm. No appointment necessary.
 *Tickets available on arrival.

Published admission number Sept 2012: **120**
 Published admission number Sept 2011: **120**
 Applications received (all preferences) Sept 2011: **794**
 Number on roll Jan 2011: **889**

Admissions Policy♦

Admission is determined by performance in selection tests held in November 2011 and run jointly by all the selective schools in Essex. Places are offered to the 120 girls aged at least 11 and under 12 on 31 August 2012 who have performed best in the selection tests, have expressed a preference for this school and have not been offered a place at a higher preference.

In the event of there being a number of girls with equal aggregated test scores competing for the last available places, priority will be given to a girl:

- (i) who is 'looked after' by the local authority;
- (ii) who has a sibling already within the school;
- (iii) who lives closest to the school by straight line measurement.

For full details of the Admissions Policy for Years 7 to 11 and the Sixth Form please apply to the school for a prospectus or visit our website www.cchs.co.uk

Admissions to Sixth Form

Sixth Form Open Evening and School tours:
 Wednesday 5 October 2011, 6.30pm – 8pm.
 Headteacher's presentation: 8pm.

The school intends to admit approximately 30 external applicants to the Sixth Form each year.

The school offers both the IB Diploma Programme and A Level.

All candidates must have GCSE grades A* – B in English Language and Mathematics and an average of at least 6.5 across their eight best GCSE results including English Language and Mathematics.

The deadline for submitting applications for provisional Sixth Form places will be 2 February 2012. In the event of oversubscription applicants will be rank ordered according to their average GCSE point score in their best 8 GCSE results. Offers will be made according to places available in the relevant teaching groups.

Where this does not provide sufficient differentiation between external students for the final places, preference will be given:

- (i) to students 'looked after' by the local authority;
- (ii) to students with siblings already within the school;
- (iii) to the student(s) who live/s closest to the school by straight line measurement.

♦ This school requires a Supplementary Information Form to be completed and returned by 31 October 2011. This form is available from the CSSE. Telephone 01245 348257 www.csse.org.uk

Transport

Information about transport to this school is available on the Consortium for Selective Schools in Essex website www.csse.org.uk.

Waiting list held until: end of autumn term.

Great Baddow High School

Duffield Road, Chelmsford CM2 9RZ
 Telephone: (01245) 265821
 Email: admin@gbhs.co.uk
 Website: www.gbhs.co.uk
 Headteacher: Mrs C Lynch
 Academy (Co-educational)
 Specialist Sports College
 11–18
 School Number: 881-4390

Opportunities to visit

Open Day: Tuesday 4 October 2011,
 6pm – 9pm
 Headteacher's talks: 7pm and 8pm
 School Tours: September – October 2011. Please
 contact the school office to book an appointment.

Published admission number Sept 2012: **240**
 Published admission number Sept 2011: **240**
 Applications received (all preferences) Sept 2011: **772**
 Number on roll Jan 2011: **1398**
 In 2011 the last child was admitted under criterion 6

Admissions Policy♦

There is no guarantee of a place for children living in the priority admission area. In the event of oversubscription places will be allocated using the following criteria in the order given:

1. Looked After Children;
2. children living in the priority admission area with a sibling attending the school;
3. other children living in the priority admission area;
4. children living outside the priority admission area with a sibling attending the school;
5. up to 24 children in each year group who are either gifted or talented in sport♦;
6. remaining applications.

In the event of oversubscription within any of the above criteria, priority will be determined by straight line distance from home to school, those living closest being given highest priority. Exceptional medical circumstances (supported by medical evidence) may override the above criteria (other than Looked After Children).

♦ To be considered for a place under the aptitude criterion you need to complete the school's Supplementary Information Form.

Admissions to Sixth Form

To study 4 subjects at AS and A2 level students should have 8 A*-C grades, including specific grades in the subjects they wish to study. BTEC Level 3 courses are also available.

Sixth Form Open Evening: Thursday 17 November 2011. Contact Mr Barker, Head of Sixth Form, for further information.

Waiting list held until: end of autumn term.

Hylands School

Hatfield Grove, Chelmsford CM1 3DF
 Telephone: (01245) 266766
 Email: hylandsoffice@hylands.e-folio.org.uk
 Website: www.hylands.essex.sch.uk
 Headteacher: Mr D Struthers
 Academy (Co-educational)
 Specialist Science College
 11–18
 School Number: 881-5455

Opportunities to visit

Open Evening: Wednesday 28 September 2011
 Headteacher's talks: 6.15pm and 8pm
 Open Week: Monday 3 – Friday 7 October 2011
 School tours: During Open Week at 9.00am except on
 Wednesday 5 October.
 Please contact the school to book a place on a tour.

Published admission number Sept 2012: **180**
 Published admission number Sept 2011: **180**
 Applications received (all preferences) Sept 2011: **278**
 Number on roll Jan 2011: **886**
 In 2011 the last child was admitted under criterion 6

Admissions Policy

Where applications for admission exceed the number of places available, the following criteria will be applied, in the order set out below, to decide which children to admit:

1. Looked After Children;
2. where the school has a brother or sister currently attending the school at time of application and admission;
3. where there are medical grounds (supported by medical evidence);
4. where the child's home lies within the school's priority admission area (the area served by: Barnes Farm Junior, Chancellor Park Primary, Highwood Primary, Kings Road Primary, Moulsham Junior, Roxwell CE (VC) Primary, Westlands Primary, Writtle Junior Schools plus part of the area served by Lawford Mead Junior and Trinity Road Primary schools which were previously in St Peter's priority admission area);
5. attendance by the child at one of the following schools: Barnes Farm, Lawford Mead, Moulsham and Writtle Junior schools and Chancellor Park, Highwood, Kings Road, Roxwell CE and Westlands Primary schools;
6. remaining applications.

In the event of oversubscription within any of the above criteria, priority will be determined by straight line distance from home to school, those living closest being given higher priority.

Straight line distances are calculated by the LA as described on page 10.

Admissions to Sixth Form

The number intended to admit for September 2012 is 110. Where the sixth form is oversubscribed the main criteria listed above will be applied to the applications. Candidates must also possess the appropriate qualifications to allow access to their chosen subjects

Waiting list held until: end of academic year.

King Edward VI Grammar (Boys) School, Chelmsford

Broomfield Road, Chelmsford CM1 3SX
 Telephone: (01245) 353510
 Email: office@kegs.org.uk
 Website: www.kegs.org.uk
 Prospectus website: www.kegsprospectus.org.uk
 Headteacher: Mr T Sherrington
 Grammar Academy (Boys)
 Specialist Science and Languages College
 11–18
 School Number: 881-5411

Opportunities to visit

Evening presentation to parents only on
 Thursday 22 September 2011 at 6.30pm.
 Daytime tours of the school in week commencing
 Monday 26 – Friday 30 September 2011 (every
 morning from 9.30 – 10.30am and Monday, Tuesday
 and Thursday afternoons from 2.30 – 3.30pm.)
 If parents wish to attend a tour they **must** also attend
 the Evening Presentation beforehand.
 Please book an appointment with the School Office –
 01245 353510.

Published admission number Sept 2012: **112**
 Published admission number Sept 2011: **112**
 Applications received (all preferences) Sept 2011: **780**
 Number on roll Jan 2011: **892**

Admissions Policy♦

Admission is determined by performance in selection tests held in November 2011 and run jointly by all the selective schools in Essex. Where applications exceed the number of places available Year 7 places will be awarded in rank order to the top 112 boys in the selection test who have expressed a preference for this school and have not been offered a place at a higher preference.

If there are applicants with equal ranking on the school's order of merit competing for the last available place, preference will be given to a boy:

- (i) who is 'looked after' by the local authority;
- (ii) who has a sibling‡;
- (iii) who lives closest to the school by straight line measurement.

‡ LA sibling definition applies (see page 10).

Details of the Admission Policy for Years 7 to 11 entry are available in the school prospectus.

Admissions to Sixth Form

Sixth Form Open Evening: Tuesday 21 February 2012 (tbc). Please see the school website nearer the time. External applicants for Sixth Form places comprise both boys and girls. The minimum number of external applicants likely to be admitted is 48. Admission to the Sixth Form is based on GCSE grades attained in full courses. The current requirements are:

1. an average GCSE points score of 6.5 across a minimum of eight subjects;
2. grade B or higher must be achieved in GCSE Mathematics and English (whether or not these subjects are being followed to A level);
3. a suitably high GCSE grade, usually A or better, in each chosen subject of study;
4. available places in the teaching sets for each subject.

The upper limit of the Year 12 intake will be based on the projected size of the teaching groups.

Applicants will be refused where the school considers the size of the teaching sets would be detrimental to the education of the group.

In cases of oversubscription, places will be offered first to all internal applicants then to external applicants. Each individual applicant must meet the same admission criteria and places will be offered in descending rank order of their average GCSE points across eight subjects.

♦ This school requires a Supplementary Information Form to be completed and returned by 31 October 2011. This form is available online at www.csse.org.uk

Transport

Information about transport to this school is available on the Consortium for Selective Schools in Essex website www.csse.org.uk.

Waiting list held until: end of academic year.

Moulsham High School

Brian Close, Chelmsford CM2 9ES
 Telephone: (01245) 260101
 Email: admin@moulshamhigh.org
 Website: www.moulshamhigh.org
 Headteacher: Mr M Farmer
 Academy (Co-educational)
 Specialist in English and Humanities
 11–18
 School Number: 881-4480

Opportunities to visit

Open Evening: Monday 26 September 2011
 from 5.30pm
 Headteacher's presentations: 6.30pm and 7.30pm
 Open Mornings: Monday 3, Wednesday 5, Friday 7 and
 Tuesday 11 October 2011,
 at 9:10am and 10:10am.
 Open Afternoon: Thursday 13 October 2011
 at 2.30pm
 Please contact Mrs M Haggis on 01245 504537
 to book places for the Open Mornings or Open
 Afternoon.

Published admission number Sept 2012: **252**
 Published admission number Sept 2011: **268**
 Applications received (all preferences) Sept 2011: **657**
 Number on roll Jan 2011: **1560**
 In 2011 the last child was admitted under criterion 5

Admissions Policy

There is no guarantee of a place for children living in the priority admission area. In the event of oversubscription places will be allocated using the following criteria in the order given:

1. Looked After Children;
2. children living in the priority admission area with a sibling attending the school;
3. other children living in the priority admission area;
4. children living outside the priority admission area with a sibling attending the school;
5. remaining applications.

In the event of oversubscription within any of the above criteria, priority will be determined by straight line distance from home to school, those living closest being given highest priority. Exceptional medical circumstances (supported by medical evidence) may override the above criteria (other than Looked After Children).

Admissions to Sixth Form

Sixth Form Open Evening: Monday 21 November 2011,
 6pm – 8.30pm.

To study A Levels students should have a minimum of 42 points from their best eight GCSE results and a B grade in the subjects they wish to study. A grade C in both English and Mathematics is also required.

To study a combination of AS Levels (1 or 2) in combination with a Level 3 Vocational Course, students must have a minimum of 38 points from their best eight GCSE results and a B grade in the subjects they wish to study. A grade C in both English and Mathematics is also required.

All applicants will be required to sign an agreed working contract.

Where applications exceed the number of places available, the following criteria will be applied, in the order given, to determine which students to admit:

1. students currently attending the school;
2. students living in the priority admissions area;
3. proximity of home to school, with those living nearer accorded the higher priority (distance is measured in a straight line from home to school).

Waiting list held until: end of autumn term.

The Sandon School

Molrams Lane, Sandon, Chelmsford CM2 7AQ

Telephone: (01245) 473611

Email: info@sandon.essex.sch.uk

Website: www.sandon.essex.sch.uk

Headteacher: Mr J Wincott

Academy (Co-educational)

Specialist Maths & Computing College

11–18

School Number: 881-5463

Opportunities to visit

Open Evening: Thursday 6 October 2011,

6pm – 9pm

Headteacher's talks: 6.30pm, 7.30pm and 8.30pm

School Tours: Please contact the school for dates and to make an appointment.

Published admission number Sept 2012: **216**

Published admission number Sept 2011: **216**

Applications received (all preferences) Sept 2011: **883**

Number on roll Jan 2011: **1251**

In 2011 the last child was admitted under criterion 4

Admissions Policy

Where applications for admission exceed the number of places available, the following criteria will be applied, in the order given, to determine which children to admit:

1. Looked After Children;
2. where there are exceptional medical grounds (supported by an independent medical report);
3. where the child has a sibling[‡] currently attending the school on the offer date;
4. proximity of home to school by straight line distance, those living nearest being accorded the higher priority. Straight line distances are calculated by the LA as described on page 10.

[‡] LA sibling definition applies (see page 10).

Admissions to Sixth Form

Students will be admitted into the Sandon School Sixth Form from the age of 16 if a total point score from the student's highest eight full GCSE grades is 42 points or more, other equivalent qualifications will be taken into consideration.

Students may also be required to obtain subject specific GCSE grades in order to be admitted to particular courses. For courses that are oversubscribed there may be further requirements based on ability or aptitude. The Governors reserve the right to admit a student to The Sandon School Sixth Form where they do not achieve 42 points due to extenuating circumstances previously made known to the school, and where their predicted point score was in excess of 42 points. The number to admit to Year 12 should not exceed 100. In the event of oversubscription to the sixth form, priority will be given to internal candidates, thereafter the school's admissions criteria listed above will apply.

Waiting list held until: end of autumn term.

St John Payne Catholic School

Patching Hall Lane, Chelmsford CM1 4BS
 Telephone: (01245) 256030
 Email: office@sjp.essex.sch.uk
 Website: www.sjp.essex.sch.uk
 Headteacher: Mr A Schular
 Comprehensive Voluntary Aided (Co-educational)
 Specialist Technology College
 11–18 Roman Catholic
 School Number: 881-4701

Opportunities to visit

School Tours: On Open Evenings, 6pm – 7:50pm
 Open Evenings: Thursday 6 and Wednesday 12
 October 2011
 Headteacher's talk: 8pm – 8.30pm

Published admission number Sept 2012: **190**
 Published admission number Sept 2011: **190**
 Applications received (all preferences) Sept 2011: **396**
 Number on roll Jan 2011: **1134**
 In 2011 the last child was admitted under criterion 7

Admissions Policy

Where there are more applications than the number of places available, places will be offered in the following order of priority:

1. Catholic[†] Looked After Children in a non-Catholic family or Looked After Children of a Catholic[†] family resident in the parishes of Billericay, Braintree, Brentwood, Burnham, Chelmsford, Danbury, Great Dunmow (south of the A120 and east of the River Roding), Hutton, Ingatestone, Maldon, Springfield, South Woodham Ferrers and Witham;
2. baptised Catholic[†] children of practising Catholic[†] families resident in the parishes of Billericay, Braintree, Brentwood, Burnham, Chelmsford, Danbury, Great Dunmow (south of the A120 and east of the River Roding), Hutton, Ingatestone, Maldon, Springfield, South Woodham Ferrers and Witham;
3. other baptised Catholics[†];
4. other Looked After Children;
5. Christians of other denominations whose application is supported by a reference from a minister of religion or other religious leader;
6. children of other faiths whose application is supported by a reference from a minister of religion or other religious leader;
7. any other applicants.

Within each criteria priority will be given using the following rules in the order shown:

1. children with a sibling[‡] at the school at the time of admission;
2. straight line distance between home and school with those closest being given priority. Straight line distances are calculated by the LA as described on page 10.
3. catechumens and members of an Eastern Christian Church will be given priority in category 5.

[‡] LA sibling definition applies (see page 10).

[†] 'Catholic' means a baptised member of a Church in communion with the See of Rome. This includes the Eastern Catholic Churches. This will be evidenced by a certificate of baptism in a Catholic Church or a Certificate of reception into the full communion of the Catholic Church.

◆ This school requires a Supplementary Information Form to be completed.

Admissions to Sixth Form

A maximum of 18 places in Year 12 will be made for external applicants, subject to applicants fulfilling the individual eligibility requirements of suitable courses.

Waiting list held until: end of spring term.

Transport

Please note that the County Council no longer provides subsidised transport to denominational schools. Please refer to page 22 for more information.

For transport enquiries please contact Stephenson's of Essex on 01702 541511.

William de Ferrers School

Trinity Square, South Woodham Ferrers CM3 5JU
 Telephone: (01245) 326326
 Email: mainoffice@williamdeferrers.essex.sch.uk
 Website: www.williamdeferrers.essex.sch.uk
 Headmaster: Mr R Ayling
 Academy (Co-educational)
 Specialist Sports College
 11–18
 School Number: 881-5427

Opportunities to visit

Open Evening: Wednesday 12 October 2011 at 5pm.
 Meeting with the Headmaster and Senior Staff (no evening tours)

Open Days: 12, 13 and 14 October 2011.

School Tours: 12 and 13 October 2011 by pre-booked appointment only at 9am, 10am and 2.30pm, and 14 October 2011 by pre-booked appointment only at 9am and 10am only.

For a tour of the school at other times please phone 01245 326326.

Published admission number Sept 2012: **319**

Published admission number Sept 2011: **319**

Applications received (all preferences) Sept 2011: **541**

Number on roll Jan 2011: **1966**

In 2011 the last child was admitted under criterion 5

Admissions Policy

In the event of oversubscription, the following criteria in the order given will be used to determine which children to admit:

1. Looked After Children;
2. students attending Cold Norton Primary, Collingwood Primary, Elmwood Primary, St Joseph's Catholic Primary, St Mary's CE (VA) Primary Woodham Ferrers, Trinity St Mary's CE (VA) Primary, and Woodville Primary Schools, by the closing date for applications;
3. students living in South Woodham Ferrers and those with a Woodham Ferrers postal address;
4. students with siblings[‡] already attending the school in any year excluding the final year (Year 13);
5. remaining applications.

In the event of oversubscription within any of the above criteria, priority will be determined by straight line distance from home to school, those living closest being given highest priority. Straight line distances are calculated by the LA as described on page 10.

[‡] LA sibling definition applies (see page 10).

Admissions to Sixth Form

Students will be admitted into the Sixth Form at age 16 where the school agrees it is able to offer and resource for the student a programme of study from which he or she will benefit. Key Stage 5 courses chosen by students and their GCSE results will be discussed individually with each student prior to a place being confirmed at the commencement of the relevant academic year. Successful applicants will sign an agreed working contract.

Entry requirements:

- A minimum GCSE average point score of 40 and a C grade in Maths and English to follow a 3 A level programme of study.
- A minimum GCSE average point score of 35 to follow the Foundation Year programme of study.
- Students must meet the specific subject requirements as published in the Sixth Form Prospectus available from the school.

The maximum capacity of the Sixth Form is a total of 436; with a maximum of 230 in Year 12. In the event of oversubscription applicants will be ranked according to their average point score in their best 8 GCSE results (including English and Maths). Offers will be made according to places available in the relevant teaching groups. Where this does not provide sufficient differentiation between students for the final places preference will be given:

- I. To students 'looked after' by the local authority
- II. To students with younger siblings already within the school at the time of admission.
- III. To the student(s) who live(s) closest to the school by straight line measurement.

For applicants not awarded a place as a result of the above they may appeal to an independent statutory appeals panel established under current regulations especially for this purpose.

The school operates a rolling waiting list.

Transport

Please be aware that if you live in the village of Latchingdon the designated school for your area is The Ormiston Rivers Academy. You must reside closer to William de Ferrers than to the Academy to qualify for transport assistance. If you do not meet this criterion then please contact Fords Coaches on 01621 740326 for further information about transport available to you.

Alderman Blaxill School

Part of the Stanway Federation

Paxman Avenue, Colchester CO2 9DQ
 Telephone: (01206) 216500
 Email: admin@blaxill.net
 Website: www.blaxill.net
 Executive Headteacher: Mr J Tippett
 Comprehensive Foundation (Co-educational)
 11–16
 School Number: 881-5464

Please note that following a statutory consultation, Alderman Blaxill School will close on 31 August 2014. Because of this there will not be a Year 7 at the school from September 2012.

Applications for transfer from Year 6 into Alderman Blaxill School cannot be accepted. Information about other schools in the area is given in the Colchester section of this book.

Colchester Academy

Hawthorn Avenue, Colchester, CO4 3JL
 Telephone: (01206) 861217
 Email: general@colchesteracademy.org.uk
 Website: www.colchesteracademy.org.uk
 Principal: Mr B Hersom
 Academy (Co-educational)
 11–16
 School Number: 881-6911

Opportunities to visit

Open Evening: Thursday 22 September 2011,
 6pm – 8pm
 Principal's talk: 7pm
 Academy Tours: Friday 23 – Thursday 29 September
 2011 at 9am. Please contact Mrs Julia Bentley
 (Principal's PA) on 01206 861217 to book a place.

Published admission number Sept 2012: **240**
 Published admission number Sept 2011: **240**
 Applications received (all preferences) Sept 2011: **256**
 Number on roll Jan 2011: **809**
 In 2011 the last child was admitted under criterion 4

Admissions Policy*

When the number of applications for admission is greater than the published admission number applications will be considered against the criteria in the order set out:

1. Looked After Children;
2. children who have a sibling ‡, currently attending the Academy in Years 7-10;
3. children attending the following main feeder primary schools – Fingringhoe CE (VA) Primary, Friars Grove Primary, Hazelmere Junior, Parsons Heath CE (VC) Primary, Roach Vale Primary, St Andrews Junior, St John's CE (VC) Primary, St Lawrence CE Primary Rowhedge and Willowbrook Primary;
4. all other applications.

In the case of oversubscription places will be determined by proximity of the child's home to the Academy. The closest to the Academy will have highest priority as measured in a straight line. Straight line distances are calculated by the LA as described on page 10.

‡ LA sibling definition applies (see page 10).

Waiting list held until: end of autumn term.

Colchester County High School for Girls

Norman Way, Colchester CO3 3US
 Telephone: (01206) 576973
 Email: office@colchestergirls.essex.sch.uk
 Website: www.colchestergirls.essex.sch.uk
 Headteacher: Mrs G E Marshall
 Grammar Foundation (Girls)
 Specialist Science College & Specialist Language
 College
 11–18
 School Number: 881-5454

Opportunities to visit

Open Days and School Tours: Tuesday 20,
 Wednesday 21, Monday 26, Thursday 29 September
 and Thursday 6 October 2011, 9am – 11.45am
 Tuesday 11 and Wednesday 12 October 2011,
 1.30 – 2.30pm. Please phone the school to book an
 appointment for a school tour.
 Headteacher's talks: Tuesday 18 October 2011,
 6pm and 6.30pm
 Please phone the school if you would like to attend the
 evening talk.

Published admission number Sept 2012: **112**
 Published admission number Sept 2011: **112**
 Applications received (all preferences) Sept 2011: **541**
 Number on roll Jan 2011: **783**

Admissions Policy♦

Admission is determined by performance in selection tests held on Saturday 19 November 2011 and run jointly by all the selective schools in Essex. Places are offered to the 112 girls aged at least 11 but under 12 on 31 August 2012 who have performed best in the selection tests, have expressed a preference for this school and have not been offered a place at a higher preference.

In the event of there being a number of girls with equal aggregated test scores competing for the last available places, priority will be given to a girl:

- (i) who is 'looked after' by the local authority;
- (ii) who is on free school meals;
- (iii) who lives closest to the school by straight line measurement.

For full details of the Admissions Policy for Years 7 to 11 and the Sixth Form please apply to the school for a prospectus.

Admissions to Sixth Form

Our first priority is to Colchester County High School for Girls (CCHS) students.

In response to requests for places in our Sixth Form (Years 12 and 13) an academic reference will be sought from the external applicant's present school. If she is considered suitable in terms of academic ability and attitude to study and if the subjects she wishes to study at AS/A2 Level are available, an applicant will be offered a conditional place. The minimum entry requirement is AAAABB at GCSE including English Language and Mathematics. Furthermore, students will be expected to achieve Grade A or A* in any GCSE subject which they are currently taking which they wish to continue at A Level

Those students wishing to take A Level Music will require GCSE Music at Grade A or A*, Associated Board Grade 5 Music Theory and Associated Board Grade 5 Music Practical.

Entrance to A level Drama and Theatre Studies will depend on suitability for the practical elements of the A Level. This will be determined by an audition which will take place during the Spring Term.

Conditional offers of places will be made after the closing application date.

An external applicant would not be offered a place if the school considered that her addition to a teaching group (or groups) would increase the size of it (or them) to the detriment of the group (or groups) as a whole and it is not financially or educationally desirable for the Governors to alter the balance of the school's staffing or appoint additional staff to create additional groups.

♦ This school requires a Supplementary Information Form to be completed and returned by 31 October 2011. The form is available online at www.csse.org.uk.

Transport

Information about transport to this school is available on the Consortium for Selective Schools in Essex website www.csse.org.uk

Waiting list held until: end of autumn term.

Colchester Royal Grammar School

Lexden Road, Colchester CO3 3ND
 Telephone: (01206) 509100
 Email: info@crgs.co.uk
 Website: www.crgs.co.uk
 Headmaster: Mr K L Jenkinson
 Grammar Foundation (Boys)
 Specialist Science and Language College
 11–18
 School Number: 881-5443

Opportunities to visit

Open Evening: Tuesday 27 September 2011,
 6.30pm – 9pm
 Sixth Form Open Evening: Tuesday 11 October 2011,
 6.45pm – 9pm

Published admission number Sept 2012: **96**
 Published admission number Sept 2011: **96**
 Applications received (all preferences) Sept 2011: **502**
 Number on roll Jan 2011: 819

Admissions Policy♦

Admission is determined by a pupil's position within the selection procedure organised by the CSSE. Places are offered to the 96 boys aged at least 11 but under 12 on 31 August 2012 scoring highest in the selection tests who have named Colchester Royal Grammar School as a preferred school and who qualify to be offered a place under the coordinated admissions arrangements.

If there are applicants with an equal ranking on the school's Order of Merit competing for the last available place, preference will be given:

- (i) to a 'looked after' child;
- (ii) to the applicant living closest to the school.
 Straight line distances are calculated by the LA as described on page 10.

Admission post 11+ is dependent on vacancies arising in the year groups. The school is normally able to admit a small number of external students (4) into Year 9 each year if they are of the required academic standard. Selection tests take place in the March or April preceding the September of entry.

Admissions to Sixth Form

A number of external day students (50) are admitted into Year 12 each year. Up to 15 places are reserved for boarders each year. Selection is on the basis of academic performance. Offers of places are made subject to satisfactory performance at GCSE or equivalent examination. The minimum grade requirement for entry is AAABB; A/A* grades are expected in the subjects to be studied at A level. This is also the requirement for internal students. In the event of oversubscription and the need for further discrimination between candidates, preference will be given to a Looked After Child and then determined by straight line distance with those living closest to the school being given the highest priority. The school admits a number of girls into the Sixth Form and the criteria for selection are as above.

Students from overseas who do not follow the British curriculum are admitted on the basis of their academic performance in their current school and where appropriate their performance in the school's entrance tests, an academic and character reference from their school and, in the case of boarding applicants, an interview. Overseas applicants must hold a full British or EU passport.

All applications to the Sixth Form should be submitted to the school by 1 December 2011.

♦ This school requires a Supplementary Information Form to be completed and returned by 31 October 2011. The form is available online at www.csse.org.uk

Transport

Information about transport to this school is available on the Consortium for Selective Schools in Essex website www.csse.org.uk.

Waiting list held until: end of autumn term.

The Gilberd School

Brinkley Lane, Colchester CO4 9PU
 Telephone: (01206) 842211
 Email: admissions@gilberd.com
 Website: www.gilberd.com
 Headteacher: Mrs L Exley
 Comprehensive Foundation (Co-educational)
 Specialist Maths & Computing College
 11–16
 School Number: 881-5441

Opportunities to visit

Open Evening: Wednesday 28 September 2011, 7pm
 Headteacher's presentation: 7.15pm and repeated at 8.15pm.

School Tours: Thursday 29 September 2011 at 9am.
 Please contact the school to book a place on the tour only.

Published admission number Sept 2012: **270**
 Published admission number Sept 2011: **270**
 Applications received (all preferences) Sept 2011: **629**
 Number on roll Jan 2011: **1349**
 In 2011 the last child was admitted under criterion 4

Admissions Policy

The following criteria will apply, in the order set out below, to determine which students to admit:

1. Looked After Children;
2. where a student's sibling, who lives within the same household, attends the Gilberd School in Years 7 to 10 at the date of application;
3. students living within the school's priority admission area at the date of application (a map defining the priority admission area can be viewed at the school);
4. any other applications.

In the event of oversubscription within any of the above criteria, priority will be determined by straight line distance from home to school, with those living closest at the date of application being given the highest priority. Straight line distances are calculated by the LA as described on page 10.

In the case of exceptional medical circumstances, supported by a doctor's certificate, the governors will consider other applications.

Waiting list held until: end of autumn term.

Philip Morant School and College

Rembrandt Way, Colchester CO3 4QS
 Telephone: (01206) 545222
 Email: theschool@philipmorant.essex.sch.uk
 Website: www.philipmorant.essex.sch.uk
 Headteacher: Mr R Abo Henriksen
 Comprehensive Foundation (Co-educational)
 Specialist Technology College
 11–18
 School Number: 881-5404

Opportunities to visit

Open Evening: Thursday 6 October 2011, 6.30pm – 8.30pm

Headteacher's talk: 7pm

School Tours: If you are unable to attend on Open Evening and would like a tour of the school please contact Ms C Bramwell at the school to arrange an appointment.

Published admission number Sept 2012: **280**
 Published admission number Sept 2011: **280**
 Applications received (all preferences) Sept 2011: **764**
 Number on roll Jan 2011: **1608**
 In 2011 the last child was admitted under criterion 9

Admissions Policy♦

The following criteria will apply, in the order set out below, to determine which students to admit:

1. Looked After Children;
2. students residing within Philip Morant School's priority admission area and who attend one of the following schools: Gosbecks Primary, Hamilton Primary, Home Farm Primary, Lexden Primary or Prettygate Junior schools. The definitive map of the school's priority admission area is available for inspection in the Admissions Manager's office;
3. students residing within Philip Morant School's priority admission area;
4. as a Technology College, up to 10% of places will be allocated on the basis of assessed aptitude for technology. Applicants seeking admission under this criterion should complete the Supplementary Information Form obtainable from the Admissions Manager at Philip Morant School;
5. students who have a sibling attending at the time of application in any year group except 13 who is still expected to be on roll at the time of proposed admission;
6. students residing outside Philip Morant School's priority admission area who attend one of the five feeder primary schools listed in criterion 2;
7. any other applicants.

Philip Morant School and College continued

If any of the criteria are oversubscribed (apart from Criterion 4 – aptitude for technology) priority will be given to those students living nearer to the school measured by straight line distance from home to school, those residing nearer to the school being given higher priority. Distance from home to school will only be applied in respect of Criterion 4 (aptitude for technology) when the effect of more than one applicant achieving the same score in the technology test would be to admit more than stated number of students under each of these criteria. Straight line distances are calculated by the LA as described on page 10.

‡ LA sibling definition applies.

Admissions to Sixth Form

Sixth Form Open Evening: Thursday 13 October 2011,
7 – 9pm.

The number admitted to the Philip Morant School and College in Year 12 from students who are not currently studying at the school is 50. Offers of admission will be made on the basis of availability of the course required by the candidate, he/she must satisfy the entry requirements to their proposed course of study (as detailed in the Philip Morant College Prospectus) and overall academic suitability based on references from the applicant's previous school, which will include information on anticipated performance at GCSE.

The following criteria will apply in the event of oversubscription:

- a. Looked After Children;
- b. students residing within the Philip Morant School's priority admission area;
- c. students who have a sibling‡ attending the school at the time of admission;
- d. other applications.

In the event of oversubscription within any of the above criteria, priority will be given to those students living nearer to the School, measured by straight-line distance from home to School, those residing nearer being given higher priority. Straight line distances are calculated by the LA as described on page 10.

◆ To be considered for a place under the aptitude criterion you need to complete the school's Supplementary Information Form.

Waiting list held until: end of autumn term, longer by request.

St Benedict's Catholic College

Norman Way, Colchester CO3 3US
 Telephone: (01206) 549222
 Email: admin@stbenedicts.essex.sch.uk
 Website: www.stbenedicts.essex.sch.uk
 Acting Principal: Mr P Johnson
 Comprehensive Voluntary Aided (Co-educational)
 Specialist Business & Enterprise and Languages
 College
 11–16 Roman Catholic
 School Number: 881-5466

Opportunities to visit

Open Morning: Thursday 6 October 2011,
 9.15am – 11.00am
 Open Evening: Thursday 6 October 2011,
 7pm – 9pm
 Principal's talk: 8.30pm

Published admission number Sept 2012: **168**
 Published admission number Sept 2011: **168**
 Applications received (all preferences) Sept 2011: **332**
 Number on roll Jan 2011: **837**
 In 2011 the last child was admitted under criterion 10

Admissions Policy♦

Where applications for admission exceed the number of places available, the following criteria will then be applied, in the order set out below, to decide which students to admit:

1. baptised Catholic* Looked After Children;
2. baptised children who are stated by their Parish Priest to be practising Catholics*, defined as weekly attendance at Sunday Mass** and for whom St Benedict's College is their nearest available Catholic school;
3. baptised children who are stated by their Parish Priest to be Catholics* who attend Sunday Mass** at least once a month and for whom St Benedict's is their nearest available Catholic school;
4. children who are stated by their Parish Priest to be baptised Catholics* and for whom St Benedict's College is their nearest Catholic school;
5. other children who are stated by their Parish Priest to be baptised Catholics;
6. other Looked After Children;
7. children who are stated by their Parish Priest to be catechumens;

8. members of Eastern Christian Churches who are stated by their Minister of Religion to be regular churchgoers, defined as at least once monthly attendance at Church services and who wish to receive their education in a Christian environment;
9. practising Christians who are stated by their Minister of Religion to be regular churchgoers defined as at least once monthly attendance at church services and who wish to receive their education in a Christian environment;
10. any other applicants.

In each of the above categories a prior preference will be given to those children who, at the time of application, have an older brother or sister attending the college in Years 7 to 10.

Shortest straight line distance from the college to the home address will be used as a tie-break when determining priority within any single category. Straight line distances are calculated by the LA as described on page 10.

*Catholic denotes a member of any Catholic Church that is in full communion with the See of Rome. When you present the Priest Reference Form you will be required by your Parish Priest to provide a Baptismal Certificate. St Benedict's is the nearest available Catholic school if the straight line distance from the home address to the College is shorter than that distance to any other Catholic secondary school.

**Sunday Mass includes the vigil Mass of Saturday.

♦ This school requires a Supplementary Information Form to be completed.

Waiting list held until: end of autumn term.

Transport

Please note that the County Council no longer provides subsidised transport to denominational schools. Please refer to page 22 for more information.

For transport enquiries please contact Stephenson's of Essex on 01702 541511.

St Helena School

Sheepen Road, Colchester CO3 3LE
 Telephone: (01206) 572253
 Email: contact@st-helena.essex.sch.uk
 Website: www.st-helena.essex.sch.uk
 Headteacher: Miss Z King
 Comprehensive Foundation (Co-educational)
 Specialist Performing Arts College
 11–16
 School Number: 881-5448

Opportunities to visit

Open Week: 3 – 7 October 2011
 Open Evening: Tuesday 4 October 2011,
 6pm – 8pm
 School Tours: During Open Week at 9.30am each day.
 No appointment necessary.

Published admission number Sept 2012: **200**
 Published admission number Sept 2011: **200**
 Applications received (all preferences) Sept 2011: **443**
 Number on roll Jan 2011: **963**
 In 2011 the last child was admitted under criterion 5

Admissions Policy

Where applications for admission exceed the number of places available, the following criteria will be applied, in the order set out below, to decide which children to admit:

1. Looked After Children;
2. where the child lives in the priority admission area (a map is available from the school office on request);
3. where the child has a sibling[‡] attending the school at the time of admission;
4. where there are exceptional medical grounds* supported by medical evidence;
5. proximity of the child's home to the school, with those living nearer being accorded the higher priority.

* Exceptional Medical Grounds – applications made on these grounds must be supported by medical evidence at the time of application. The relevant medical reasons may be in relation to either the child or one or both parents. You must provide evidence from a doctor or other registered health professional setting out why the preferred school is the most suitable as a result of the medical circumstances, and the difficulties that would be caused if the child had to attend and travel to another school. Applications made under this criterion will be considered by the governing body to consider whether there are exceptional medical reasons that merit inclusion under this criterion.

If there is over subscription in any particular category, distance is measured by straight line. Straight line distances are calculated by the LA as described on page 10. In the unlikely event of two applicants with an identical distance competing for a single place at the School the place will be offered to one applicant on the basis of lots drawn by a School Governor not involved in admissions (supervised by an independent scrutineer), with the exception of twins, triplets etc.

[‡] LA sibling definition applies (see page 10).

Waiting list held until: end of autumn term.

The Stanway School

Winstree Road, Stanway, Colchester CO3 0QA

Telephone: (01206) 575488

Email: admin@stanway.essex.sch.uk

Website: www.stanway.essex.sch.uk

Headteacher: Mr J Tippett

Comprehensive Foundation (Co-educational)

Specialist Humanities and Maths & Computing College

11–16

School Number: 881-5462

Opportunities to visit

Information Evening: Wednesday 21 September 2011.
Presentations by the Headteacher at 4.30pm, 6pm and 7.30pm

Open Evening: Wednesday 5 October 2011,
5pm – 8pm

Open Week: 3 – 7 October 2011

School Tours: Each day during Open Week. Please arrive for 9.15am. No appointment necessary.

Published admission number Sept 2012: **223**

Published admission number Sept 2011: **223**

Applications received (all preferences) Sept 2011: **744**

Number on roll Jan 2011: **1119**

In 2011 the last child was admitted under criterion 4

Admissions Policy

Where applications for admission exceed the number of places available, the following criteria will be applied, in the order set out below:

1. Looked After Children;
2. children who have a sibling[‡] attending the school in Years 7 to 10 at the time of application and at the date of proposed admission;
3. children who live within the priority admission area (a map is available at the school) and who attend the following main feeder primary schools: Birch Primary, Chappel Primary, Copford Primary, Fordham All Saints Primary, Great Tey Primary, Heathlands Primary West Bergholt, Holy Trinity Primary (Eight Ash Green & Aldham), Layer-De-La-Haye Primary, St Andrew's Primary Marks Tey, St Andrew's Primary Wormingford, Stanway Primary and Stanway Fiveways Primary schools;
4. children residing outside the priority admission area who attend one of the feeder primary schools listed above;
5. children residing within the priority admission area who do not attend one of the feeder primary schools listed above;
6. all other applications.

In the case of oversubscriptions when any of the above criteria are applied, the places will be allocated according to the proximity of the child's home to school, as measured by a straight line, with those living closest being accorded the higher priority. Straight line distances are calculated by the LA as described on page 10.

[‡] LA sibling definition applies (see page 10).

Waiting list held until: end of autumn term, longer by request.

The Thomas Lord Audley School

Part of the Stanway Federation

Monkwick Avenue, Monkwick, Colchester CO2 8NJ
 Telephone: (01206) 547911
 Email: enquiries@tla.essex.sch.uk
 Website: www.tla.essex.sch.uk
 Executive Headteacher: Mr J Tippett
 Comprehensive Foundation (Co-educational)
 11-16
 School Number: 881-4020

In the event of oversubscription within one of the above criteria, priority will be determined by straight line distance from home to school, with those living nearest being given highest priority.

Waiting list held until: end of autumn term.

Opportunities to visit

Information Evening: Thursday 22 September 2011,
 Headteacher's talks: 4.30pm, 6pm and 7.30pm.
 Open Evening: Thursday 29 September 2011,
 5pm – 8pm
 Open Week: Monday 26 – Thursday 29 September
 2011. School tours: daily during Open Week at
 9.15am. Please arrive by 9am.

Published admission number Sept 2012: **168**
 Published admission number Sept 2011: **210**
 Applications received (all preferences) Sept 2011: **245**
 Number on roll Jan 2011: **668**
 In 2011 the last child was admitted under criterion 6

Admissions Policy

There is no guarantee of a place for children living in the priority admission area. In the event of oversubscription places will be allocated using the following criteria in the order given:

1. Looked After Children;
2. children who have a sibling[†] attending the school in Years 7-10 at the time of application and date of proposed admission;
3. Children who live in the priority admission area at the time of application and proposed date of admission (a map of the priority admission area is available on request from the school) and who attend the following main feeder primary schools: Cherry Tree Primary, Fingringhoe CE Primary, Kings Ford Junior, Langenhoe Primary, Mersea Island Primary, Monkwick County Junior, Montgomery Junior, Old Heath County Primary, St Lawrence Primary, St Michael's Primary School;
4. children residing outside the priority admission area who attend one of the above feeder primary schools;
5. children residing in the priority admission area who do not attend one of the above feeder primary schools;
6. remaining applications.

Thurstable School, Sports College and Sixth Form Centre

Maypole Road, Tiptree, Colchester CO5 0EW
 Telephone: (01621) 816526
 Email: thurstable@thurstable.essex.sch.uk
 Website: www.thurstable.essex.sch.uk
 Headteacher: Mr M Bacon
 Academy (Co-educational)
 Specialist Sports College
 11–18
 School Number: 881-5413

Opportunities to visit

Open Evening: Wednesday 28 September 2011,
 5.30pm
 Headteacher's talk: 5.40pm and 6.40pm
 School Tours: 29 and 30 September between 9am and
 12 noon. Please contact the School Reception to book
 a place or book at the Open Evening on 28 September.

Published admission number Sept 2012: **210**
 Published admission number Sept 2011: **210**
 Applications received (all preferences) Sept 2011: **349**
 Number on roll Jan 2011: **1156**
 In 2011 the last child was admitted under criterion 4

Admissions Policy♦

Where applications for admission exceed the number of places available, the following criteria will be applied, in the order set out below, to decide which children to admit:

1. Looked After Children;
2. exceptional medical reasons*;
3. children with a sibling‡ in Years 7–12 at the time of application and date of proposed admission;
4. children attending traditional feeder primary schools listed below:
 Baynards Primary, Great Totham Primary, Mersea Island Primary, Messing-Cum-Inworth Primary, Milldene Primary, Tiptree Heath Primary, Tiptree St Lukes CE (VC) Primary, Tolleshunt D'Arcy St Nicholas CE VA Primary schools and Tollesbury School, and Birch CE (VA) Primary School (where Thurstable is the nearest school by straight line distance. (Admission of a student attending Birch CE (VA) Primary School is not an indication that the LA will automatically agree to free transport.);
5. children living in the priority admission area (a map is available from the school office);
6. children identified by Colchester United Football Club as showing aptitude in football and leadership. (Priority will be given to a maximum of 15 students on the basis of aptitude in football);
7. other children.

* Applications made on these grounds must be supported by medical evidence at the time of application. The relevant medical reasons may be in relation to either the child or one or both of the parents. You must provide evidence from a doctor or other registered health professional setting out why the preferred school is the most suitable as a result of the medical circumstances, and the difficulties that would be caused if the child had to attend and travel to another school. Applications made under this criterion will be considered by the governing body. In the event of oversubscription within any individual criterion, straight line distance will be used with priority given to those children living nearest the school. Straight line distances are calculated by the LA as described on page 10.

‡ LA sibling definition applies and date of proposed admission.

Admissions to Sixth Form

Sixth Form Open Evening: Tuesday 18 October 2011,
 6pm – 8pm

The school is proposing to admit 140 students in Year 12. 40 of these places are available for external applicants, including applicants from the Colchester United Football Academy.

Year 12 Students will only be admitted to an advanced course if they meet the requirements of 40 points calculated from their top 8 GCSE scores including English and Maths. In addition students must meet specific subject requirements detailed in the prospectus, available from the school.

In the event of oversubscription applications will be prioritised in accordance with the above admissions policy.

♦ For applications under criterion 6 this school requires a Supplementary Information Form to be completed.

Waiting list held until: end of autumn term.

Davenant Foundation School

Chester Road, Loughton IG10 2LD
 Telephone: (0208) 508 0404
 Email: reception@davenant.com
 Website: www.davenantschool.co.uk
 Headteacher: Mr C J Seward
 Academy (Co-educational)
 Specialist Sports and Languages College and Training School
 11–18
 School Number: 881-5426

Opportunities to visit

Open Evening: Thursday 6 October 2011, 6.30pm – 9.30pm

Headteacher's talks: 6.45pm and 8pm

School tours: Please contact the school to make arrangements.

Published admission number Sept 2012: **160**

Published admission number Sept 2011: **160**

Applications received (all preferences) Sept 2011: **560**

Number on roll Jan 2011: **1166**

In 2011 the last child was admitted under criterion 2b

Admissions Policy♦

Applications will be considered on the basis of a parent's commitment to the Christian or Jewish faith. All applications will be graded according to frequency and length of attendance at a place of worship, with the best attendance over the last 7 years of either the father or the mother or the legal guardian counting. Each application is given an attendance score which is calculated by awarding:

- 20 points for each year of confirmed weekly attendance
- 10 points for each year of confirmed fortnightly attendance
- 5 points for each year of confirmed monthly attendance and
- 1 point for each year of confirmed occasional attendance.
- The list of applications will be ranked in order of attendance score.

In the event of oversubscription the following criteria will be applied in the order set out below:

1. Looked After Children, i.e. children who are looked after by a local authority;

2. children of parents committed to the Christian or Jewish faith, determined by attendance at a place of mainstream Christian† or Jewish worship by at least one parent or legal guardian. Preference will be given to the greater number of years attended and frequency of attendance during the last seven years, as confirmed by referees. Where applicants have the same record of attendance, places will be allocated in the following order:
 - (a) children with siblings‡ in the school who will still be in the school at the time of admission;
 - (b) children living nearest to the school measured in a straight line to the main gate of the school*.
3. other children, with places allocated in the following order:
 - (a) children with siblings‡ in the school who will still be in the school at the time of admission;
 - (b) children living nearest to the school measured in a straight line to the main gate of the school*.

† A place of mainstream Christian worship in the United Kingdom is defined as one which is a member of, or affiliated to, Churches Together in Britain and Ireland, the Evangelical Alliance or Affinity. Referees will be asked to confirm, on the form which is sent to them, that the place of worship satisfies this definition.

‡ LA sibling definition applies (see page 10).

* Straight line distances are calculated by the LA as described on page 10.

Applicants will be required to provide proof of their home address when they return their Supplementary Information Form. This must be a copy of each of the following:

- council tax notification
- child benefit statement
- two utility bills dated within the previous three months.

Where there is reasonable doubt as to the validity of a home address the school reserves the right to take additional checking measures. If a place is secured through false information regarding a home address, the offer of a place may be withdrawn.

♦ This school requires a Supplementary Information Form to be completed. This must be obtained from either the school or the ECC website.

Davenant Foundation School continued

Admissions to the Sixth Form

Sixth Form Open Evening: Wednesday 2 November 2011, 6.30pm – 9pm.

The number to admit for the first time is 35. In the event of oversubscription for these places, applicants will be assessed on their suitability for the courses offered, commitment to the school's Christian ethos and their likely involvement in the extensive extra-curricular programme.

Transport

This school is not considered to be a denominational school by Essex County Council for the purposes of our transport policy.

Waiting list held until: end of autumn term, longer by request.

Debden Park High School

Willingale Road, Debden, Loughton IG10 2BQ
 Telephone: (0208) 508 2979
 Email: admin@dphs-tkat.org
 Website: www.debdenhosting.net
 Headteacher: Mr C Cavanagh
 Academy (Co-educational)
 Specialist Arts College
 11–16
 School Number: 881-4001

Opportunities to visit

Open Morning: Saturday 24 September 2011, 9.30am
 Headteacher's talk: 9.30am
 School Tours: on Open Morning. Please contact the school for tours at other times.

Published admission number Sept 2012: **180**
 Published admission number Sept 2011: **180**
 Applications received (all preferences) Sept 2011: **492**
 Number on roll Jan 2011: **806**
 In 2011 the last child was admitted under criterion 5

Admissions Policy

There is no guarantee of a place for children living in the priority admission area. In the event of oversubscription any remaining places will be allocated using the following criteria in the order given:

1. Looked After Children;
2. children living in the priority admission area* with a sibling‡ attending the school at the time of application and admission;
3. other children living in the priority admission area*;
4. children living outside the priority admission area* with a sibling‡ attending the school at the time of application and admission;
5. remaining applications.

In the event of oversubscription within any of the above criteria, priority will be determined by straight line distance from home to school, those living closest being given highest priority. Straight line distances are calculated by the LA as described on page 10. Exceptional medical circumstances (supported by medical evidence) may override the above.

‡ LA sibling definition applies (see page 10).

* A map of the priority admission area is available from the school.

Transport

Children from Chigwell, Epping and Waltham Abbey will not be considered for transport assistance unless they have first been refused by their designated school.

Waiting list held until: end of academic year.

King Harold Academy

Broomstick Hall Road, Waltham Abbey EN9 1LF
 Telephone: (01992) 714800
 Email: office@kingharold.essex.sch.uk
 Website: www.kingharold.essex.sch.uk
 Headteacher: Mrs D Halpin
 Academy (Co-educational)
 11–16
 School Number: 881-5415

Opportunities to visit

Open Morning: Saturday 1 October 2011, 9.30–11.00am
 Headteacher's talks: 9.30am and 10.30am
 School tours: Please contact Mrs Helen Sideras (Transition Co-ordinator) for informal tours of the school.

Published admission number Sept 2012: **150**
 Published admission number Sept 2011: **220**
 Applications received (all preferences) Sept 2011: **139**
 Number on roll Jan 2011: **567**
 In 2011 the last child was admitted under criterion 5

Admissions Policy

Where applications for admission exceed the number of places available, the following criteria will be applied in the order set out below to determine which children to admit:

1. Looked After Children;
2. children living in the priority admissions area with a sibling‡ attending the school at the time of application and admission;
3. other children living in the priority admissions area;
4. children living outside the priority admissions area with a sibling‡ attending the school at the time of application and admission;
5. remaining applications.

In the event of oversubscription within any of the above criteria priority will be determined by straight line distance from home to school, those living closest being given the highest priority. Straight line distances are calculated by the LA as described on page 10.

Exceptional medical circumstances (supported by medical evidence) may override the above.

‡ LA sibling definition applies (see page 10).

Waiting list held until: end of academic year.

Roding Valley High School

Alderton Hill, Loughton IG10 3JA
Telephone: (0208) 508 1173
Email: office@roding-sec.essex.sch.uk
Website: www.roding-sec.essex.sch.uk
Headteacher: Mr P Banks
Comprehensive Community (Co-educational)
Specialist Performing Arts College
11-16
School Number: 881-4499

Opportunities to visit

Open Evening: Thursday 13 October 2011
Headteacher's talks: 6.15pm – 7.30pm. Open Mornings – Tours of the school during the school day: Monday 3 – Thursday 6 October at 9.15am. Please report to Reception by 9.10am. No appointment necessary.

Published admission number Sept 2012: **240**
Published admission number Sept 2011: **240**
Applications received (all preferences) Sept 2011: **578**
Number on roll Jan 2011: **1184**
In 2011 the last child was admitted under criterion 7

Admissions Policy

There is no guarantee of a place for children living in the priority admission area. In the event of oversubscription any remaining places will be allocated using the following criteria in the order given:

1. Looked After Children;
2. children living in the priority admission area with a sibling attending the school;
3. other children living in the priority admission area;
4. children resident in the priority admission areas of Buckhurst Hill Community Primary, Chigwell Primary and Limes Farm Junior schools with a sibling attending the school;
5. other children resident in the priority admission areas of Buckhurst Hill Community Primary, Chigwell Primary and Limes Farm Junior schools;
6. children living outside the priority admission area with a sibling attending the school;
7. remaining applications.

In the event of oversubscription within any of the above criteria, priority will be determined by straight line distance from home to school, those living closest being given highest priority. Exceptional medical circumstances (supported by medical evidence) may override the above criteria (other than Looked After Children).

Transport

Children from Chigwell, Epping and Waltham Abbey will not be considered for transport assistance unless they have first been refused by their designated school.

Waiting list held until: end of autumn term.

St John's C of E (VC) School

Tower Road, Epping CM16 5EN
Telephone: (01992) 573028
Email: admin@st-johns-epping.essex.sch.uk
Website: www.st-johns.info
Headteacher: Mr G Yerosimou
Comprehensive Voluntary Controlled (Co-educational)
Specialist Engineering College
11–16 Church of England
School Number: 881-4530

Opportunities to visit

Open Evening: Wednesday 21 September 2011,
5.30pm – 8.30pm
Headteacher's presentation: 7pm
Open Mornings: Tuesday 27 and Wednesday 28
September 2011, 8.30am – 11.30am
School tours: at 8.45am and 9.35am. Please contact
the Headteacher's PA on 01992 573028 ext. 202 to
arrange a visit.

Published admission number Sept 2012: **180**
Published admission number Sept 2011: **180**
Applications received (all preferences) Sept 2011: **289**
Number on roll Jan 2011: **789**
In 2011 the last child was admitted under criterion 5

Admissions Policy

There is no guarantee of a place for children living in the priority admission area. In the event of oversubscription any remaining places will be allocated using the following criteria in the order given:

1. Looked After Children;
2. children living in the priority admission area with a sibling attending the school;
3. other children living in the priority admission area;
4. children living outside the priority admission area with a sibling attending the school;
5. remaining applications.

In the event of oversubscription within any of the above criteria, priority will be determined by straight line distance from home to school, those living closest being given highest priority. Exceptional medical circumstances (supported by medical evidence) may override the above criteria (other than Looked After Children).

Waiting list held until: end of autumn term.

West Hatch High School

High Road, Chigwell IG7 5BT
Telephone: (0208) 504 8216
Email: admin@westhatch.essex.sch.uk
Website: www.westhatch.essex.sch.uk
Headteacher: Mrs FA Howarth
Academy (Co-educational)
Specialist Business & Enterprise and Humanities
School
11-18
School Number: 881-5405

Opportunities to visit

Open Evening: Tuesday 4 October 2011 at 6.30pm
Headteacher's talks: 7pm and 7.45pm
School Tours: Please contact Mrs Burns at the school for further opportunities to visit.

Published admission number Sept 2012: **189**
Published admission number Sept 2011: **189**
Applications received (all preferences) Sept 2011: **677**
Number on roll Jan 2011: **1295**
In 2011 the last child was admitted under criterion 3

Admissions Policy♦

Where applications received exceed the number of places available, the following criteria will be applied, in the order set out below, to determine which children to admit:

1. Looked After Children, i.e. children who are in the care of a local authority;
2. where the child is a sibling‡ of a current pupil of the school;
3. proximity of the child's home to the school, with those living nearer being accorded the higher priority. Straight line distances are calculated by the LA as described on page 10.

The Admissions Committee may, in exceptional individual medical/family circumstances, fully supported by professional advice provided at the time of application which provides evidence as to why West Hatch is the most suitable school in the locality able to provide appropriate education and what difficulties would be caused if the child had to travel to another school, consider an application which does not meet the criteria set out above.

‡ A sibling is a child who at the deadline date for applications has a full brother or sister currently in Years 7-12 or who share at least one common parent. 'Siblings' is however also deemed to cover step

children, and legally adopted children. In the case of Year 11 or Year 12 siblings, there must be a reasonable expectation at the time of application that they will be staying on at the school to continue in Year 12 or complete in Year 13 a post-16 course of study, and also in the case of Year 12 Siblings, they must have completed their Statutory education (Year 7 – 11) at WHHS.

♦ This school requires an Evidence of Address Form to be completed to prove the child's main place of residence at the application deadline date. This must be returned to the Admissions Secretary at the school by 7 November 2011. Offers of places will be conditional on receipt of the relevant documentation and confirmation of the correctness of those details. Failure to meet deadlines stated for the EAF may mean applications will not be considered for offer day purposes on 1 March 2012.

Admissions to Sixth Form

Sixth Form Open Evening: Thursday 10 November 2011.

West Hatch High School is proposing to admit up to 189 students including a minimum of 30 students from other schools in Year 12. The school will admit students to the Sixth Form where it is able to offer a programme from which they will benefit and for which they are suitably qualified. Please see the Sixth Form prospectus for further details. In the event of oversubscription, those living nearer the school will be accorded the higher priority.

Waiting list held until: end of academic year by request.

Burnt Mill School

First Avenue, Harlow CM20 2NR
 Telephone: (01279) 300555
 Email: office@burntmill.essex.sch.uk
 Website: www.burntmill.essex.sch.uk
 Headteacher: Mrs H Mills
 Comprehensive Foundation (Co-educational)
 Specialist Performing Arts College
 11-16
 School Number: 881-4333

Opportunities to visit

Open Evening: Tuesday 22 September 2011 at 6.30pm
 Headteacher's address: 7pm and 8pm
 School Tours: Tuesday 22 September 2011, 9am,
 11.15am. No appointment necessary.
 For tours at other times, please contact the school.

Published admission number Sept 2012: **210**
 Published admission number Sept 2011: **240**
 Applications received (all preferences) Sept 2011: **444**
 Number on roll Jan 2011: **1130**
 In 2011 the last child was admitted under criterion 6

Admissions Policy

There is no guarantee of a place for children living in the priority admission area. In the event of oversubscription places will be allocated using the following area criteria in the order given:

1. Looked After Children;
2. children living in the area served by Roydon Primary School;
3. children living within the defined geographical area of Harlow* with a sibling‡ attending the school;
4. other children living in the defined geographical area of Harlow*;
5. children living outside the defined geographical area of Harlow* with a sibling‡ attending the school;
6. remaining applications.

In the event of oversubscription within any of the above criteria, priority will be determined by straight line distance from home to school, those living closest being given highest priority. Straight line distances are calculated by the LA as described on page 10.

* A map showing the defined geographical area of Harlow is available at the school.

‡ LA sibling definition applies (see page 10).

Transport (defined geographical area of Harlow)

If you reside in the defined geographical area of Harlow, transport will only be provided if you meet the distance criteria outlined on page 21 and your child will be attending the nearest school to your home address using the shortest walking route. If you would like to confirm the school for which you would be entitled to transport assistance please contact 0845 603 2200 and ask for the Education Transport & Awards Team.

Waiting list held until: end of autumn term.

Mark Hall School

First Avenue, Harlow CM17 9LR
 Telephone: (01279) 866280
 Email: general@markhall.essex.sch.uk
 Website: www.markhall.essex.sch.uk
 Headteacher: Mrs J Hadlow
 Comprehensive Foundation (Co-educational)
 11–16
 School Number: 881-4263

Opportunities to visit

Open Evening: Thursday 29 September 2011,
 6.30pm – 9pm
 Open Morning: Saturday 1 October 2011, 10am – 1pm
 Headteacher's talk: 7pm and 8pm
 Tours can be booked at the Open Evening.

Published admission number Sept 2012: **180**
 Published admission number Sept 2011: **180**
 Applications received (all preferences) Sept 2011: **348**
 Number on roll Jan 2011: **1026**
 In 2011 the last child was admitted under criterion 6

Admissions Policy

There is no guarantee of a place for children living in the priority admission area. In the event of oversubscription places will be allocated using the following criteria in the order given:

1. Looked After Children;
2. pupils living in the area served by Matching Green CE (VC) Primary and Sheering CE (VC) Primary schools;
3. pupils living within the defined geographical area of Harlow* with a sibling‡ attending the school;
4. other pupils living in the defined geographical area of Harlow*;
5. pupils living outside the defined geographical area of Harlow* with a sibling‡ attending the school;
6. remaining applications.

In the event of oversubscription within any of the above criteria, priority will be determined by straight line distance from home to school, those living closest being given highest priority. Straight line distances are calculated by the LA as described on page 10.

* A map showing the defined geographical area of Harlow is available at the school.

‡ LA sibling definition applies (see page 10).

Transport (defined geographical area of Harlow)

If you reside in the defined geographical area of Harlow, transport will only be provided if you meet the distance criteria outlined on page 21 and your child will be attending the nearest school to your home address using the shortest walking route. If you would like to confirm the school for which you would be entitled to transport assistance please contact 0845 603 2200 and ask for the Education Transport & Awards Team.

Waiting list held until: end of autumn term.

Passmores School and Technology College

Tracyes Road, Harlow, CM18 6JH
 Telephone: (01279) 770800
 Email: passmores@passmores.essex.sch.uk
 Website: www.passmores.essex.sch.uk
 Headteacher: Mr V Goddard
 Comprehensive Foundation (Co-educational)
 Specialist Technology College
 11-16
 School Number: 881-4323

Opportunities to visit

Open Evening: Day and Evening: Thursday 13 October 2011, 9.15am – 3pm and 7pm – 9pm
 School Tours: Thursday mornings from 15 September to 20 October between 9.15am and 1pm
 Please contact the school reception to book a place.

Published admission number Sept 2012: **210**
 Published admission number Sept 2011: **210**
 Applications received (all preferences) Sept 2011: **607**
 Number on roll Jan 2011: **886**
 In 2011 the last child was admitted under criterion 3

Admissions Policy

There is no guarantee of a place for children living in the priority admission area. In the event of oversubscription places will be allocated using the following area criteria in the order given:

1. Looked After Children;
2. children living within the defined geographical area of Harlow with a sibling attending the school;
3. other children living in the defined geographical area of Harlow;
4. children living outside the defined geographical area of Harlow with a sibling attending the school;
5. remaining applications.

In the event of oversubscription within any of the above criteria, priority will be determined by straight line distance from home to school*, those living closest being given highest priority. Exceptional medical circumstances (supported by medical evidence) may override the above.

* For those living in Zone 1 this distance will be measured from the home address to the former Passmores site in Tendring Road. A map showing this zone is available from the school or from School Planning and Admissions.

Transport (defined geographical area of Harlow)

If you reside in the defined geographical area of Harlow, transport will only be provided if you meet the distance criteria outlined on page 21 and your child will be attending the nearest school to your home address using the shortest walking route. If you would like to confirm the school for which you would be entitled to transport assistance please contact 0845 603 2200 and ask for the Education Transport & Awards Team.

Waiting list held until: end of autumn term.

St Mark's West Essex Catholic School

Tripton Road, Harlow CM18 6AA
 Telephone: (01279) 421267
 Email: admin@st-marks.essex.sch.uk
 Website: www.st-marks.essex.sch.uk
 Headteacher: Miss E Heaphy
 Comprehensive Voluntary Aided (Co-educational)
 Specialist Business & Enterprise College
 11–18 Roman Catholic
 School Number: 881-5458

Opportunities to visit

Open Day/Evening: Thursday 7 October 2011,
 9.15am – 12.45pm, 7pm - 9pm
 Headteacher's talk: 8.15pm
 School Tours: 7 September - 22 October 2011,
 9.15am – 1pm and 2.30pm – 3.15pm.
 School tours are also available prior to Open Day/
 Evening. Please contact the school to arrange an
 appointment.

Published admission number Sept 2012: **160**
 Published admission number Sept 2011: **160**
 Applications received (all preferences) Sept 2011: **340**
 Number on roll Jan 2011: **1053**
 In 2011 the last child was admitted under criterion 7

Admissions Policy♦

Where applications for admission exceed the number of places available, the following criteria will be applied in the order set out below to decide which children to admit:

1. Looked After Catholic Children;
2. Catholic children attending a Catholic or non-Catholic primary school in the catchment area, with those living closest being accorded the highest priority*;
3. Catholic children from elsewhere who cannot reasonably attend another Catholic school nearer their home, with priority given to those who have the furthest to travel to the nearest alternative Catholic school;
4. other Looked After Children;
5. other children attending a Catholic primary school in the catchment area, with those living closest being accorded the highest priority*;
6. children of committed Christians of other traditions or committed adherents of other faiths whose application is supported by a minister or religious leader, with those living closest to the school being accorded the highest priority*;

7. children whose parents wish them to continue their education in a Catholic secondary environment, with those living closest to the school being accorded the highest priority*.

Preference is given in each category to those who have a brother or sister (this includes adopted or step-children) in the school at the time of admission.

† 'Catchment area' includes the six Catholic Parishes of Harlow and Epping.

* Straight line distances are calculated by the LA as described on page 10.

Admissions to Sixth Form

Sixth Form Open Evening: Wednesday 3 November 2011.

Further details can be obtained from the school.

♦ This school requires a Supplementary Information Form to be completed.

Waiting list held until: end of autumn term.

Transport

Please note that the County Council no longer provides subsidised transport to denominational schools. Please refer to page 22 for more information.

Stewards School – Science Specialist, Harlow

Parnall Road, Harlow CM18 7NQ
 Telephone: (01279) 421951
 Email: admin@stewardsschool.co.uk
 Website: www.stewardsschool.co.uk
 Headteacher: Ms R Murthar
 Comprehensive Foundation (Co-educational)
 Specialist Science College
 11–16
 School Number: 881-4343

Opportunities to visit

Open Day and Evening: Thursday 15 September 2011,
 Doors open at 6pm and close at 9pm.
 Headteacher's talk: 7pm
 School Tours: On Open Day at 9.15am, 11.20am and
 2pm. No appointment necessary.

Published admission number Sept 2012: **210**
 Published admission number Sept 2011: **210**
 Applications received (all preferences) Sept 2011: **410**
 Number on roll Jan 2011: **1020**
 In 2011 the last child was admitted under criterion 5

Admissions Policy

There is no guarantee of a place for children living in the priority admission area. In the event of oversubscription places will be allocated using the following criteria in the order given:

1. Looked After Children;
2. children living in the area served by Nazeing Primary School;
3. children living within the defined geographical area of Harlow* with a sibling‡ attending the school;
4. other children living in the defined geographical area of Harlow*;
5. children living outside the defined geographical area of Harlow* with a sibling‡ attending the school;
6. remaining applications.

In the event of oversubscription within any of the above criteria, priority will be determined by straight line distance from home to school, those living closest being given highest priority. Straight line distances are calculated by the LA as described on page 10. Exceptional medical circumstances (supported by medical evidence) may override the above.

* A map of the defined Geographical area of Harlow is available at the school.

‡ LA sibling definition applies (see page 10).

Transport (defined geographical area of Harlow)

If you reside in the defined geographical area of Harlow, transport will only be provided if you meet the distance criteria outlined on page 21 and your child will be attending the nearest school to your home address using the shortest walking route. If you would like to confirm the school for which you would be entitled to transport assistance please contact 0845 603 2200 and ask for the Education Transport & Awards Team.

Waiting list held until: end of autumn term.

The Ormiston Rivers Academy

Southminster Road, Burnham-on-Crouch CM0 8QB
Telephone: (01621) 782377
Email: info@ormistonriversacademy.co.uk
Website: www.ormistonriversacademy.co.uk
Principal: Ms J Costello
Academy (Co-educational)
11–18
School Number: 881-4290

Opportunities to visit

Open Evening: Tuesday 27 September 2011,
6.30pm – 8.45pm
Headteacher's Presentations: 7pm and 8pm
Open Mornings: Monday 3 October – Friday 14 October
2011 (usual times 9am and 10am). Contact Reception
for appointments on 01621 782377.

Published admission number Sept 2012: **140**
Published admission number Sept 2011: **140**
Applications received (all preferences) Sept 2011: **172**
Number on roll Jan 2011: **790**
In 2011 the last child was admitted under criterion 5

Admissions Policy

There is no guarantee of a place for children living in the priority admission area. In the event of oversubscription any remaining places will be allocated using the following criteria in the order given:

1. Looked After Children;
2. children living in the priority admission area with a sibling attending the school;
3. other children living in the priority admission area;
4. children living outside the priority admission area with a sibling attending the school;
5. remaining applications.

In the event of oversubscription within any of the above criteria, priority will be determined by straight line distance from home to school, those living closest being given highest priority. Exceptional medical circumstances (supported by medical evidence) may override the above criteria (other than Looked After Children).

Admissions to Sixth Form

Further details can be obtained from the school.

Waiting list held until: end of autumn term.

Plume School

Fambridge Road, Maldon CM9 6AB
 Telephone: (01621) 854681
 Email: admin@plume.essex.sch.uk
 Website: www.plume.essex.sch.uk
 Headteacher: Mr D Stephenson
 Comprehensive Foundation (Co-educational)
 Specialist College Performing Arts
 11–18
 School Number: 881-5402

Opportunities to visit

Open Evening: Thursday 29 September 2011,
 6pm – 9pm
 Open Days: Tuesday 4 – Friday 7 October 2011
 Please either book a place during the Open Evening or
 telephone the school after 29 September.

Published admission number Sept 2012: **295**
 Published admission number Sept 2011: **295**
 Applications received (all preferences) Sept 2011: **569**
 Number on roll Jan 2011: **1844**
 In 2011 the last child was admitted under criterion 3

Admissions Policy

Where applications for admissions exceed the number
 of places available, the following criteria will be
 applied in the order set out below:

1. Looked After Children;
2. children residing in the priority admission area*
 with a sibling‡ attending the school at the time of
 application and determination with a reasonable
 expectation that the sibling‡ will still be attending
 at the time of the new academic year;
3. children residing in the priority admission area*;
4. children residing outside the priority admission
 area* with a sibling‡ attending the school at the
 time of application and determination with a
 reasonable expectation that the sibling‡ will still
 be attending at the time of the new academic year;
5. children residing outside the priority admission
 area*.

In the event of oversubscription within any of the
 above criteria, priority will be determined by straight
 line distance from home to the Fambridge Road main
 entrance of the Plume School, those living closest
 being given highest priority. Straight line distances are
 calculated by the LA as described on page 10.

Where a child lives part of the week with one parent
 and part with another member of the family, the ‘home
 address’ will be considered to be the residence where
 the child spends at least three nights of the school
 week each term time week. Proof of residence will be
 required.

* A map of the priority admission area is available at
 the school.

‡ A sibling is a child living at the same address who
 has one or both parents in common or who is related
 by a parent’s marriage or whose parents are living as
 partners at the same address.

Admissions to Sixth Form

Sixth Form Open Evening: Thursday 3 November 2011.

Applications to the Sixth Form must be made on the
 school’s application form. The closing date will be
 published on the school website. Entry requirements
 vary according to the course of study. Full details are
 available in the school’s Sixth Form brochure.

Waiting list held until: end of autumn term.

The FitzWimarc School

Hockley Road, Rayleigh SS6 8EB
 Telephone: (01268) 743884
 Email: headteacher@fitzwimarc.essex.sch.uk
 Website: www.fitzwimarc.essex.sch.uk
 Headteacher: Mr K R Newcombe
 Comprehensive Foundation (Co-educational)
 Designated Mathematics and Computing College
 11–16
 School Number: 881-5422

Opportunities to visit

Open Evening: Thursday 22 September 2011,
 6.30pm – 9pm
 Parents' Information Evening: Thursday 29 September
 2011, 7pm – 8pm
 School Tours: Please contact the school for details and
 to book a place.

Published admission number Sept 2012: **270**
 Published admission number Sept 2011: **270**
 Applications received (all preferences) Sept 2011: **825**
 Number on roll Jan 2011: **1350**
 In 2011 the last child was admitted under criterion 6

Admissions Policy

Where applications for admission exceed the number of places available, the following criteria will be applied in order of priority:

1. Looked After Children;
2. children living in the priority admission area*;
3. children living outside the priority admission area* with a sibling‡ attending the school;
4. medical grounds for admission (provided that the child's needs can be met by existing provision) with evidence provided at the time of application from a health professional or hospital explaining specifically the medical reasons why the child would need to attend the FitzWimarc School;
5. children living outside the priority admission area* and attending one of the partner primary schools – Edward Francis Junior, Grove Wood Primary, Rayleigh Primary or Wyburns Primary schools;
6. where the child's home is close to the FitzWimarc School, with those living nearer by straight line distance being accorded the higher priority.

‡ A sibling is defined as a brother or sister (or a step brother/sister) living at the same address who attends the school at the time of application with a reasonable expectation that he or she will still be attending at the time of proposed admission.

* A map is available from the school office.

§ The home address is considered to be the address at which the child resides on a permanent basis. If the child lives at more than one address it is the address of the parent/guardian who is in receipt of the child benefit for that child that is considered as the home address. Verification may be required. Straight line distances are calculated by the LA as described on page 10.

Waiting list held until: end of autumn term. Parents/ carers should contact the school if they wish to remain on the list beyond this time.

Greensward Academy

Greensward Lane, Hockley SS5 5HG
 Telephone: (01702) 202571
 Email: contactus@greenswardacademy.org
 Website: www.greenswardacademy.org
 Principal: Mrs D Stokes
 Academy (Co-educational)
 Science and Vocational Training Specialism, Teacher
 Training School, Leading Edge Status
 11–18
 School Number: 881-6906

Opportunities to visit

Open Evening: Thursday 22 September 2011,
 6.30pm – 9pm
 Parents' Information Evening: Tuesday 27 September
 2011, 7pm.
 School Tours: Please contact Mrs Camy via email at
dcamy@greenswardacademy.org or by telephone on
 01702 202571 ext. 1259.

Published admission number Sept 2012: **270**
 Published admission number Sept 2011: **270**
 Applications received (all preferences) Sept 2011: **583**
 Number on roll Jan 2011: **1621**
 In 2011 the last child was admitted under criterion 4

Admissions Policy

Where applications for admission exceed the number of places available the following criteria will be applied:

1. Looked After Children;
2. where the child has a brother or sister[‡] currently attending the Academy at the closing date for applications, with a reasonable expectation that the older child will still be at the Academy at the time the younger child is admitted. (The final year for this purpose will be Year 13 or Year 11 if the sibling is not staying on to the Sixth Form);
3. where the child attends one of the following partner primary schools: Ashingdon School, Hockley Primary School, Plumberow Primary School or The Westerings Primary School;
4. by proximity of the child's home as the crow flies to the Academy, with those living nearer being accorded the higher priority*. This principle will also be used as a tie-breaker when the planned admission number is reached within one of the earlier criteria. In the event of a tie break for the distance criteria, names will be drawn out of a hat.

[‡] LA sibling definition applies (see page 10).

* Straight line distances are calculated by the LA as described on page 10.

Admissions to Sixth Form

Admission arrangements for entry into the Sixth Form can be found in the Sixth Form Prospectus, which is available from the Academy. The Sixth Form's number intended to admit (external) is 15.

This school holds a rolling waiting list.

The King Edmund School

Vaughan Close, Rochford SS4 1TL
 Telephone: (01702) 545771
 Email: adminoffice@kes.essex.sch.uk
 Website: www.kes.essex.sch.uk
 Headteacher: Mr J Osborn
 Academy (Co-educational)
 Specialist Status in Business & Enterprise and Applied Learning
 11–18
 School Number: 881-5421

Opportunities to visit

Open Evening: Wednesday 28 September 2011, 6.30pm – 9pm
 Headteacher's talks: 7pm and 8pm.
 School Tours: Tours of the school during the working day are held regularly from September to 21 October 2011. To book a tour, please telephone the school and ask for Mrs Lee.

Published admission number Sept 2012: **270**
 Published admission number Sept 2011: **270**
 Applications received (all preferences) Sept 2011: **587**
 Number on roll Jan 2011: **1559**
 In 2011 the last child was admitted under criterion 6

Admissions Policy

In the event of oversubscription the following criteria will be applied in the order set out:

1. children in public care (Looked After Children);
2. children attending the following Rochford Cluster primary schools: Barling Magna Community Primary, Canewdon Endowed CE (VC) Primary, Great Wakering Primary, Holt Farm Junior, Rochford Primary, St Teresa's Catholic Primary (Hawkwell), Stambridge Primary and Waterman Primary schools and Ashingdon School;
3. children with a sibling attending the school at the time of application, with a reasonable expectation that the sibling will still be attending at the time of admission. A sibling is defined as a brother or sister, or a step brother/sister, permanently living at the same address for more than 4 nights each week;
4. medical grounds (supported by medical evidence from a qualified medical specialist) for admitting the child;
5. children living within the catchment area of one of the named primary schools but not attending that school. The address must be the child's primary residence and the child must reside at the address for more than 4 nights each week.
6. other children.

In the event of oversubscription within any of the above criteria, priority will be determined by the proximity of home to school by straight line distance, those living nearer being accorded higher priority. Straight line distances are calculated by the LA as described on page 10.

Admissions to Sixth Form

Sixth Form Open Evening: Wednesday 12 October 2011, 7pm.

Students will be admitted to the Sixth Form by reference to their academic ability to cope with the courses they wish to study. Details can be found in the school's Sixth Form prospectus. The admission limit for Year 12 entry in September 2012 for external applicants will be 25, or until 200 places have been offered.

Waiting list held until: end of autumn term, longer by request.

The Sweyne Park School

Sir Walter Raleigh Drive, Rayleigh SS6 9BZ
Telephone: (01268) 784721
Email: admin@sweynepark.com
Webiste: www.sweynepark.com
Headteacher: Mr A Hodgkinson
Comprehensive Community (Co-educational)
Specialist Science College
11-16
School Number: 881-4011

Opportunities to visit

Open Evening: Tuesday 20 September 2011,
6.30pm – 8.30pm
School Tours: Daily, 21 – 30 September 2011, 9am and
10am. No appointment necessary.

Published admission number Sept 2012: **248**
Published admission number Sept 2011: **248**
Applications received (all preferences) Sept 2011: **680**
Number on roll Jan 2011: **1256**
In 2011 the last child was admitted under criterion 5.

Admissions Policy

There is no guarantee of a place for children living in the priority admission area. In the event of oversubscription places will be allocated using the following criteria in the order given:

1. Looked After Children;
2. children living in the priority admission area with a sibling attending the school;
3. other children living in the priority admission area;
4. children living outside the priority admission area with a sibling attending the school;
5. remaining applications.

In the event of oversubscription within any of the above criteria, priority will be determined by straight line distance from home to school, those living closest being given highest priority. Exceptional medical circumstances (supported by medical evidence) may override the above (other than Looked After Children).

Up to five places in each year group are allocated for pupils with hearing impairments who are placed at the school due to its enhanced provision.

Waiting list held until: end of autumn term.

Clacton Coastal Academy

Pathfields Road, Clacton-on-Sea, CO15 3JL
 Telephone: (01255) 428131
 Email: contactus@clactoncoastalacademy.org
 Website: www.clactoncoastalacademy.org
 Executive Principal: Mr S Chamberlain
 Academy (Co-educational)
 11–18
 School Number: 881-6910

Opportunities to visit

Open Evening: Thursday 13 October 2011
 Academy Tours: Please contact the Academy to arrange a tour.

Published admission number Sept 2012: **270**
 Published admission number Sept 2011: **270**
 Applications received (all preferences) Sept 2011: **384**
 Number on roll Jan 2011: **1833**
 In 2011 the last child was admitted under criterion 5

Admissions Policy

Where applications for admissions exceed the number of places available, the following criteria will be applied in the order set out below:

1. Looked After Children;
2. pupils whose siblings[‡] currently attend the school and who will continue to do so on the date of admission;
3. where the child lives in the catchment area of the following partner primary schools: Frobisher Primary School and St Osyth CE Primary School;
4. where the child lives in the priority admissions area;
5. proximity to the Academy using straight line measurement from the main entrance to the child's home. This principle will also be used as a tie-breaker when the planned admissions number is reached within one of the earlier criteria.

Exceptional medical or social reasons may override the criteria listed above.

Admissions to Sixth Form

The admission number for Year 12 is 100. The same minimum academic entry requirements will apply for both internal and external candidates. In the event of oversubscription the criteria above will apply.

Waiting list held until: end of autumn term.

Clacton County High School

Walton Road, Clacton CO15 6DZ
 Telephone: (01255) 424266
 Email: admin@countyhigh.org.uk
 Website: www.countyhigh.org.uk
 Principal: Mr J Brindle
 Comprehensive Foundation (Co-educational)
 Specialist Arts College
 11–18
 School Number: 881-5444

Opportunities to visit

Open Evening: Thursday 22 September 2011,
 6pm – 8.30pm
 Principal talks: In the Hall throughout the evening.

Published admission number Sept 2012: **279**
 Published admission number Sept 2011: **279**
 Applications received (all preferences) Sept 2011: **452**
 Number on roll Jan 2011: **1684**
 In 2011 the last child was admitted under criterion 5

Admissions Policy

Where applications for admissions exceed the number of places available, the following criteria will be applied in the order set out below:

1. Looked After Children;
2. children living in the priority admission area with siblings[‡] who will still be on roll at the date of admission;
3. children living in the priority admission area*;
4. children not living in the priority admission area* with siblings[‡] who will still be on roll at the date of admission;
5. children who attend the following schools: Great Clacton CE Junior, Holland Haven Primary and Holland Park Primary schools;
6. proximity of the home to school with those living nearer being accorded higher priority.

Straight line distance between home and school will be used as a tie-breaker with those living closest to the school having highest priority. Straight line distances are calculated by the LA as described on page 10.

[‡]LA sibling definition applies (see page 10).

* A map is available on our website www.countyhigh.org.uk or by request from the school.

Admissions to Sixth Form

The School operates an open admissions policy into the Sixth Form although there are specific entry requirements for admission to types of courses and to individual courses.

Waiting list held until: end of autumn term.

The Colne Community School and College

Church Road, Brightlingsea, Colchester CO7 0QL
 Telephone: (01206) 303511
 Email: mail@colne.essex.sch.uk
 Website: www.colne.essex.sch.uk
 Principal: Mr N Sharma
 Academy (Co-educational)
 Specialist College for Sports
 11–18
 School Number: 881-5460

Opportunities to visit

Open Morning: Saturday 8 October 2011,
 9.30am – 12.30pm
 School Tours: By arrangement with the school.

Published admission number Sept 2012: **248**
 Published admission number Sept 2011: **248**
 Applications received (all preferences) Sept 2011: **346**
 Number on roll Jan 2011: **1425**
 In 2011 the last child was admitted under criterion 5

Admissions Policy

Where applications exceed the number of places available, the following criteria will be applied in priority order:

1. Looked After Children;
2. children attending one of the following named primary schools: Alresford Primary, Brightlingsea Junior, Broomgrove Junior, Elmstead Primary, Great Bentley Primary and Millfields Primary schools;
3. children living within the transport catchment area* of the school (transport catchment map available to view on the school's website);
4. children with a sibling‡ attending the school at the time of application and determination;
5. other children, with priority to those living nearest to the school as measured by the shortest travelling distance by road (using www.bing.co.uk shortest distance).

In the case of there being more children within any category than there are places available, priority will be accorded to those children who live nearest to the school as measured by road distance.

* LA sibling definition applies (see page 10).

Admissions to Sixth Form

Further details can be obtained from the school.

Waiting list held until: end of academic year.

Harwich and Dovercourt High School

Hall Lane, Dovercourt, Harwich, CO12 3TG
 Telephone: (01255) 245460
 Email: admin@harwich.essex.sch.uk
 Website: www.harwich.essex.sch.uk
 Headteacher: Mr N Mountford
 Comprehensive Foundation (Co-educational)
 Specialist Humanities College
 11–18
 School Number: 881-5453

Opportunities to visit

Open Evening: Tuesday 27 September 2011
 School Tours: Wednesday 28, Thursday 29 and
 Friday 30 September 2011 at 9 am. No appointment necessary.

Published admission number Sept 2012: **260**
 Published admission number Sept 2011: **260**
 Applications received (all preferences) Sept 2011: **222**
 Number on roll Jan 2011: **1187**
 In 2011 the last child was admitted under criterion 4

Admissions Policy

Where applications for admissions exceed the number of places available, the following criteria will be applied in the order set out below:

1. Looked After Children;
2. where the child has a brother or sister attending the school at the time of admission to the school;
3. where there are medical grounds (supported by medical evidence) for admitting the pupil;
4. proximity of the child's home to school, measured by straight line distance, those living nearer being accorded higher priority.

Admissions to Sixth Form

Details of entry requirements are available in the Sixth Form Prospectus which is available from the school.

Waiting list held until: end of autumn term.

Manningtree High School

Colchester Road, Lawford, Manningtree, CO11 2BW
 Telephone: (01206) 392852
 Email: school@manningtree.essex.sch.uk
 Website: www.manningtree.essex.sch.uk
 Headteacher: Miss D Hollister
 Comprehensive Foundation (Co-educational)
 Specialist Science College
 11–16
 School Number: 881-5470

‡ LA sibling definition applies (see page 10).

* A map of the priority admission area is available from the school.

Waiting list held until: end of academic year.

Opportunities to visit

Open Evening: Thursday 6 October 2011,
 6pm – 8.30pm
 Parent Information Evenings for Year 6 pupils, Parents
 and Carers: Tuesday 20 or Wednesday 28 September
 2011, 7pm.
 Open Week: 10 – 14 October 2011.
 Tours of the school each day during Open Week at
 8.45am and 11.15am. No need to book. Parents
 and Carers only; not for Year 6 children. Tours last 45
 minutes.

Published admission number Sept 2012: **174**
 Published admission number Sept 2011: **168**
 Applications received (all preferences) Sept 2011: **478**
 Number on roll Jan 2011: **840**
 In 2011 the last child was admitted under criterion 4

Admissions Policy

Where applications for admission exceed the number of places available, the following criteria will be applied, in the order set out below, to determine which children to admit:

1. Looked After Children;
2. children living in the priority admission area* and/or children attending feeder primary schools of Ardleigh St Mary's CE (VC) Primary, Bradfield Primary, Dedham CE (VC) Primary, Highfields Primary, Lawford CE (VA) Primary, Mistley Norman CE (VC) Primary and St George's CE Primary Great Bromley schools;
3. children with a sibling‡ attending the school at the time of admission;
4. remaining applications.

In each of the above criteria priority will be decided on proximity of the child's home to the school, with those living closer being accorded the highest priority. Straight line distances are calculated by the LA as described on page 10.

Tendring Technology College

Thorpe Campus (11–14):
Landermere Road, Thorpe-le-Soken, CO16 0LQ
Telephone: (01255) 861341
Email: thorpe@ttc.uk.net
Website: www.ttc.uk.net

Frinton Campus:
Rochford Way, Frinton-on-Sea, CO13 0AZ
Telephone: (01255) 672116
Email: frinton@ttc.uk.net

Principal: Ms C M B Haynes
Comprehensive Foundation (Co-educational)
Specialist Technology College
11–19
School Number: 881-5432

Opportunities to visit

Open Evening at Thorpe Campus for Year 7:
Thursday 29 September 2011, 7pm – 9pm
School Tours: During Open Week Monday 3 – Thursday 6 October 2011. Please contact the Thorpe Campus on 01255 861341 for further details.

Open Evening at Frinton Campus for Sixth Form: Please contact the Frinton Campus for further details.

Published admission number Sept 2012: **312**
Published admission number Sept 2011: **312**
Applications received (all preferences) Sept 2011: **620**
Number on roll Jan 2011: **1920**
In 2011 the last child was admitted under criterion 4

Admissions Policy

In the event of oversubscription, places will be allocated using the following criteria in the order given:

1. Looked After Children;
2. children who attend the following schools: All Saints CE (Great Oakley), Engaines, Frinton-on-Sea, Hamford, Kirby, Rolph CE, St Andrew's CE (Weeley), Tendring, Walton-on-the-Naze and Wix & Wrabness Primary schools.
3. children with a brother or sister attending the college in year groups 7–12 and who will still be on roll at the date of admission;
4. children living in the priority admission area (a map can be seen via www.ttc.uk.net/index.php?page=admissions or by request from the College);

5. the remainder of places will be allocated by the proximity of the child's home, front entrance, to the College. The closest to the College, as determined by straight line distance between home and the Thorpe campus gates, will have the highest priority. In the case of the 'home' being a flat the distance will be measured to the main external entrance. Straight line distances are calculated by the LA as described on page 10.

In the event of oversubscription within any of the above criteria, priority will be determined by straight line distance from the child's home front entrance to the Thorpe Campus gates, as calculated by the LA and described on page 10, those living closest being given highest priority. In the case of the 'home' being a flat, the distance will be measured to the main external entrance.

Admissions to Sixth Form

The Published Admission Number will be 25 for September 2012 in Year 12 and students will be admitted at post 16 providing they meet the specific criteria for the courses they wish to study. Further information is available from the College, the Sixth Form prospectus or via the school's website.

Waiting list held until: end of autumn term, longer by request.

The Helena Romanes School and Sixth Form Centre

Parsonage Downs, Dunmow, CM6 2AU
Telephone: (01371) 872560
Email: enquiries@helena-romanes.essex.sch.uk
Website: www.helena-romanes.essex.sch.uk
Headteacher: Mr S Knight
Comprehensive Foundation (Co-educational)
Specialist Humanities College
11–18
School Number: 881-5457

Opportunities to visit

Open Day: Saturday 1 October 2011,
9.30am – 1pm
Headteacher's presentation: 10am, 11am
and 12 noon
Open Mornings with tour: 5, 6, 11, 12 and 13 October
2011. Please contact the school to book a place.

Published admission number Sept 2012: **270**
Published admission number Sept 2011: **270**
Applications received (all preferences) Sept 2011: **407**
Number on roll Jan 2011: **1443**
In 2011 the last child was admitted under criterion 4

Admissions Policy

In the event of oversubscription, places will be allocated using the following criteria in the order given:

1. Looked After Children;
2. children from the priority admission area (map available at the school);
3. where the child has a brother or sister† at the school at the closing date and where this sibling† remains at the school when the child starts;
4. remaining applications.

Straight line distance between the home and school will be used as a tie-breaker with those living closest to the school having highest priority.

Straight line distances will be calculated by the LA as described on page 10.

† LA sibling definition applies (see page 10).

Admissions to Sixth Form

A full Sixth Form Centre prospectus, application guidance and forms are available from the Head of Sixth Form. See school website for further details.

Waiting list held until: end of autumn term.

The Mountfitchet Mathematics and Computing College

Forest Hall Road, Stansted CM24 8TZ
Telephone: (01279) 813384
Email: reception@mountfitchet.essex.sch.uk
Website: www.mountfitchet.essex.sch.uk
Headteacher: Ms C Anderson
Comprehensive Community (Co-educational)
Specialist Maths & Computing College
11–16
School Number: 881-4360

Opportunities to visit

Open Evening: Tuesday 20 September 2011,
6pm – 9pm
Headteacher's talks: 6.15 pm and 7.15 pm
Open Morning: Tuesday 20 September 2011, 9.15am
– 11am – an opportunity for informal tours of the
College.

College Tours: Thursdays and Fridays at 9am by
appointment. Please contact Ann Williams, Head's PA,
at the College.

Published admission number Sept 2012: **112**
Published admission number Sept 2011: **112**
Applications received (all preferences) Sept 2011: **150**
Number on roll Jan 2011: **418**
In 2011 the last child was admitted under criterion 5

Admissions Policy

There is no guarantee of a place for children living in the priority admission area. In the event of oversubscription any remaining places will be allocated using the following criteria in the order given:

1. Looked After Children;
2. children living in the priority admission area with a sibling attending the school;
3. other children living in the priority admission area;
4. children living outside the priority admission area with a sibling attending the school;
5. remaining applications.

In the event of oversubscription within any of the above criteria, priority will be determined by straight line distance from home to school, those living closest being given highest priority. Exceptional medical circumstances (supported by medical evidence) may override the above criteria (other than Looked After Children).

Waiting list held until: end of autumn term.

Newport Free Grammar School

Newport, Saffron Walden CB11 3TR
 Telephone: (01799) 540237
 Email: admin@nfgs.essex.sch.uk
 Website: www.nfgs.essex.sch.uk
 Headteacher: Mr S O'Hagan
 Comprehensive Foundation (Co-educational)
 Specialist Language College
 11–18
 School Number: 881-5436

Opportunities to visit

Open Evening: Thursday 29 September 2011,
 6pm – 9pm
 Headteacher's talks: 6pm and 7.30pm.
 School Tours: 3 – 7 October 2011. Please contact the
 school to book a place.

Published admission number Sept 2012: **168**
 Published admission number Sept 2011: **168**
 Applications received (all preferences) Sept 2011: **501**
 Number on roll Jan 2011: **1018**
 In 2011 the last child was admitted under criterion 5

Admissions Policy

Where applications for admission to Year 7 exceed the number of places available, the following criteria will be applied in the order of priority set out below to decide which children to admit:

1. Looked After Children;
2. boys and girls residing in the parish of Newport;
3. boys and girls residing in the parishes of Arkesden, Berden, Chrishall, Clavering, Debden, Elmdon, Langley, Quendon, Rickling, Wenden Lofts, Wicken Bonhunt, Widdington, Wimbish;
4. brothers and sisters (including step or adopted siblings, living in the same family household) of present pupils who are expected to be attending the school at the time of admission;
5. any remaining places will be allocated to all other applicants in proportion to the number of those applicants from each of the nine areas on the map available from the school.

In the event of oversubscription within any of the above criteria, places will be allocated with reference to the proximity of the child's home to the school, as measured by straight line distance. Straight line distances are calculated by the LA as described on page 10.

The governors reserve the right, at their discretion, to admit pupils from Carver Barracks at any date even if this means exceeding the number intended to admit provided always that any such admission is not to the detriment of the efficient running of the school.

Admissions to Sixth Form

No student will be admitted to the school post 16 unless academic requirements, set out annually in the school's Sixth Form prospectus, have been met. The number of applicants admitted to Year 12 from other educational institutions is 30. In the event of there being more applications than places available, places will be given to those best suited academically to their chosen courses using predicted GCSE grades as the indicator. Any provisional offers made on this basis will be confirmed to those whose actual GCSE grades meet the requirements on their chosen courses.

Waiting list held until: end of academic year.

Saffron Walden County High School

Audley End Road, Saffron Walden CB11 4UH

Telephone: (01799) 513030

Email: info@swchs.net

Website: www.swchs.net

Headteacher: Mr J Hartley

Academy (Co-educational)

Specialist Leading Edge

11–18

School Number: 881-5408

Opportunities to visit

Open Evening: Thursday 6 October 2011

Headteacher's address at 6.30pm, 7.15pm and 8pm

School tours: Monday 10, Tuesday 11 and Wednesday

12 October 2011, 9.30am – 11am. Please contact the school to book a place.

Published admission number Sept 2012: **290**

Published admission number Sept 2011: **290**

Applications received (all preferences) Sept 2011: **516**

Number on roll Jan 2011: **2002**

In 2011 the last child was admitted under criterion 6

Admissions Policy

In the event of oversubscription, places will be allocated using the following criteria in the order given:

1. Looked After Children;
2. pupils with siblings[‡] currently attending the school in Years 7–12 on the closing date;
3. pupils whose home address* is situated in one of the following parishes: Ashdon, Great Chesterford, Great Sampford, Hadstock, Hempstead, Littlebury, Little Chesterford, Little Sampford, Radwinter, Saffron Walden (including Little Walden), Swards End, Strethall, Wendens Ambo;
4. pupils whose home address* makes Saffron Walden County High School the nearest secondary school, with distance determined by straight line measurement;
5. pupils, not qualifying under (1) to (4) above, attending maintained primary schools situated in any of the parishes listed under (3). A list of maintained primary schools is available from the school office;
6. other applicants.

In the event of oversubscription within any of the above criteria, priority will be determined by straight line distance from home to school, those living closest being given the highest priority. Straight line distances are calculated by the LA as described on page 10.

[‡] LA sibling definition applies (see page 10).

* Governors reserve the right to seek verification of the stated home address.

Admissions to Sixth Form

Sixth Form Open Evening: Wednesday 17 November 2011.

No student will be admitted to the school at this stage unless academic requirements, set out annually in the school's Sixth Form prospectus, have been met and there are places available on chosen courses. The number of sufficiently qualified external applicants intended to admit each year is 70. In the event of their being more applications than places available, places will be given to those best suited academically to their chosen courses using predicted GCSE grades as the indicator. Any provisional offers made on this basis will be confirmed to those whose actual GCSE grades meet the requirements on their chosen courses.

Waiting list held until: at least the end of the autumn term.

The Essex Admissions Forum

The Essex Admissions Forum was established under the School Standards and Framework Act 1998 (as amended by the Education Act 2002 and the Education and Inspections Act 2006). The Forum allows admissions authorities and other interested parties to discuss the effectiveness of admission arrangements and how they will serve the interests of local families. This is achieved by seeking agreements on how to deal with difficult admissions issues and advising admissions authorities on ways in which their arrangements can be improved.

The Forum also monitors admissions guidance for parents, such as this booklet. Members of the Forum are appointed for a period of not more than four years. Membership is comprised of:

- four Essex County Councillors;
- one representative of the Anglican Diocese of Chelmsford;
- one representative of the Roman Catholic Diocese of Brentwood;
- three representatives of community and voluntary controlled schools;
- two representatives of voluntary aided schools;
- two representatives of foundation schools;
- one representative of Academies;
- one representative of selective schools.

In addition, the Forum has appointed other members to represent the interests of the local community, including parents and representatives of children with special educational needs, Looked After Children and an officer from a neighbouring LA. All admissions authorities are required to have regard to Forum advice.

The Forum has considered and where relevant has issued guidance on the following matters:

- a protocol for mid year admissions to secondary schools for Looked After Children by a Local Authority;
- the DfE School Admissions Code;
- the DfE School Admissions Appeals Code;
- protocol for the admission of excluded pupils;
- the annual scheme for the co-ordination of primary school admissions;
- the annual scheme for the co-ordination of secondary school admissions;
- annual admission statistics;
- the implications of the Education and Inspections Act 2006 on Planning and Admissions;
- testing before preference.

The Forum's advice on these issues has, where necessary, been incorporated into the admission arrangements of community and voluntary controlled school across Essex and other admission authorities have been notified. Where the advice is not reflected in the arrangements of other Essex admission authorities or where the arrangements do not meet the statutory guidance in the new DfE Schools Admissions Code, objections to the Schools Adjudicator are considered.

The Forum has the power to prepare an Annual Report about all aspects of school admissions down to individual school level with a view to determining whether arrangements across Essex are clear and objective and offer fair access for all parents and their children.

A guide to information sources

Organisation

Essex County Council

Website: www.essex.gov.uk

Tel: Contact Essex 0845 743 0430

contact@essex.gov.uk

08457 585592 (for those with hearing difficulties)

Department for Education (DfE)

Website: www.dfe.gov.uk

Tel: 0370 000 2288

Ofsted

Website: www.ofsted.gov.uk

Tel: 0300 123 4234

Independent Schools Council – ISC

Website: www.isc.co.uk

Tel: 020 7766 7070

The Consortium of Selective Schools in Essex – CSSE

Website: www.csse.org.uk

Tel: 01245 348257

sifadmin@csse.org.uk

transport@csse.org.uk

Advisory Centre for Education – ACE

Website: www.ace-ed.org.uk

Tel: 0808 800 5793

Types of information available

Secondary Education in Essex booklet

Contact details of all primary and secondary schools in Essex

Information about admissions

Information regarding national standards and curriculum

Performance tables and research statistics

Details of Local Authorities

Various publications

School inspection reports

Details of Local Education Authorities

Details of post 16 Education

Information about independent schools

Various publications

Information for parents e.g. fees and contact details

Parents and children's guides to the selection process

Dates of the selection test results

Information about selective schools

11+ queries/email correspondence

Bus queries

Information about appeals, exclusion and bullying

General educational advice

Various publications

Links to other organisations

Exam results and statistical information are only one factor to be considered when deciding on a school for your child.

A school visit is important before making your final decision.

Useful addresses and telephone numbers

Essex County Council
your local authority
www.essex.gov.uk

Who to contact

For school admissions enquiries

School Planning and Admissions

Schools, Children and Families Directorate
Essex County Council
PO Box 4261
Chelmsford CM1 1GS

Online admissions:
www.essex.gov.uk/admissions

Telephone: 0845 603 2200
Fax: 01245 436739
Email: admissions@essex.gov.uk

For school transport enquiries
(Years 7–11), free school meals, uniform
grant enquiries and assistance for Year 12
and 13 pupils with maintenance and home
to school travel expenses

Education Transport & Awards Team

Telephone: 0845 603 2200
Fax: 01245 434819
Email: EducationAwards@essex.gov.uk

If you are entitled to travel and have a question **about the contract allocated or tickets**

Passenger Transport Co-ordination Section
Essex County Council
County Hall
Chelmsford
CM1 1QH

Telephone: 0845 603 2200
(ask for Transport Contract Team)
Email: tcc@essex.gov.uk

Useful addresses and telephone numbers

Education offices for Southend and Thurrock

Pupil Access Team
Department of Children & Learning
Southend on Sea Borough Council

Civic Centre
Victoria Avenue
Southend on Sea SS2 6ER
Telephone: 01702 215007
admissions@southend.gov.uk

Pupil Admissions
Children Education and Families
Thurrock Borough Council

Civic Offices
New Road
Grays RM17 6SL
Telephone: 01375 652883
School.Admissions@thurrock.gov.uk

Education Offices of neighbouring local authorities

Cambridgeshire County Council

Admissions Team ELH CC 1206
Castle Court
Castle Hill
Cambridge CB3 0AP
Telephone: 01223 699200
admissions@cambridgeshire.gov.uk

Hertfordshire County Council

Children, Schools & Families
Room 134, County Hall
Pegs Lane
Hertford SG13 8DF
Telephone: 0300 123 4043
hertsdirect@hertscc.gov.uk

London Borough of Barking and Dagenham

Admissions and Attendance Team
Town Hall
Barking
IG11 7LU
Telephone: 0300 123 4043
3000direct@lbbd.gov.uk

London Borough of Enfield

Enfield Schools Admission Service
PO Box 56
Civic Centre
Silver Street
Enfield EN1 3XQ
Telephone: 020 8379 5501
Enfield.School.Admissions@enfield.gov.uk

London Borough of Havering

School Admissions
2nd Floor Scimitar House
Eastern Road
Romford RM1 3NH
Telephone: 01708 434600
schooladmissions@haverling.gov.uk

London Borough of Redbridge

Admissions & Awards (Redbridge)
Lynton House
255–259 High Road
Ilford IG1 1NY
Telephone: 0208 708 3139/3140
AdmissionsandAwards@redbridge.gov.uk

London Borough of Waltham Forest

Babcock 4 S
Schools Admission Service
Graylaw House
394 High Road
Leyton
London E10 6QE
Telephone: 0845 877 0031
secondary.admissions@babcockwf.co.uk

Suffolk County Council

Admissions
St Edmund House
Rope Walk
Ipswich IP4 1LZ
Telephone: 0845 600 0981
admissions.south@csduk.com

Alphabetical index of schools

Alderman Blaxill School	70	King Edward VI Grammar School, Chelmsford	65
Alec Hunter Humanities College	39	King Harold Academy	82
Anglo European School	47	King John School (The)	58–59
Appleton School (The)	55	Maltings Academy	42
Basildon Lower Academy	29	Manningtree High School	99
Basildon Upper Academy	30–31	Mark Hall School	87
Beauchamps High School	32	Mayflower High School	37
Billericay School (The)	33	Moulsham High School	66
Boswells School (The)	60	Mountfitchet Maths and Computing College (The)	101
Brentwood County High School	48–49	New Rickstones Academy	43
Brentwood Ursuline Convent High School	50–51	Newport Free Grammar School	102
Bromfords School (The)	34	Notley High School and Braintree Sixth Form	44
Burnt Mill School	86	The Ormiston Rivers Academy	91
Castle View School	56	Passmores School and Technology College	88
Chelmer Valley High School	61	Philip Morant School and College	73–74
Chelmsford County High School for Girls	62	Plume School	92
Clacton Coastal Academy	97	Ramsey College (The)	45
Clacton County High School	97	Roding Valley High School	83
Colchester Academy	70	Saffron Walden County High School	103
Colchester County High School for Girls	71	Sandon School (The)	67
Colchester Royal Grammar School	72	Sawyers Hall College	51
Colne Community School and College (The)	98	Shenfield High School	52
Cornelius Vermuyden School and Arts College (The)	56	St Benedict's Catholic College	75
Davenant Foundation School	80–81	St Helena School	76
De La Salle School	35	St John Payne Catholic School	68
Deanes School (The)	57	St Johns C of E (VC) School, Epping	84
Debden Park High School	82	St Mark's West Essex Catholic School	89
FitzWimarc School (The)	93	St Martin's School	53–54
Gilberd School (The)	73	Stanway School (The)	77
Great Baddow High School	63	Stewards School – Science Specialist, Harlow	90
Greensward Academy	94	Sweyne Park School (The)	96
Harwich and Dovercourt High School	98	Tabor Science College	46
Hedingham School and Sixth Form	40	Tendring Technology College	100
Helena Romanes School & Sixth Form Centre (The)	101	Thomas Lord Audley School & Language Coll (The)	78
Honywood Community Science School (The)	41	Thurstable School Sports College & Sixth Form Cent	79
Hylands School	64	West Hatch High School	85
James Hornsby High School (The)	36	William De Ferrers School	69
King Edmund School (The)	95	Woodlands School, Basildon	38

This booklet is issued by

Essex County Council School Planning and Admissions

You can contact us in the following ways:

By post:

School Planning and Admissions
Schools, Children and Families Directorate
Essex County Council
P.O. Box 4261
Chelmsford CM1 1GS

By telephone:

0845 603 2200

By fax:

01245 436739

By email:

admissions@essex.gov.uk

Applications using the online system are welcome.

Visit our website:

www.essex.gov.uk/admissions

The information contained in this document can be translated, and/
or made available in alternative formats, on request.

Published September 2011