

DUE DATE \_\_\_\_\_

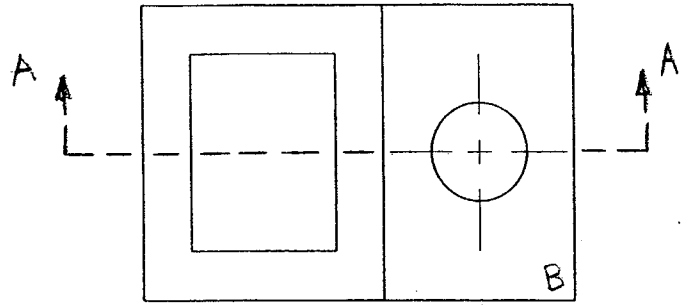
NAME \_\_\_\_\_

## ENGR/DRAFT 105 Assignment #11, Isometric Sections

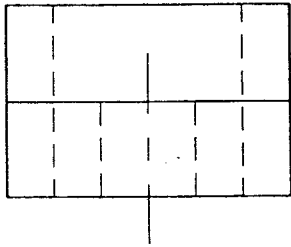
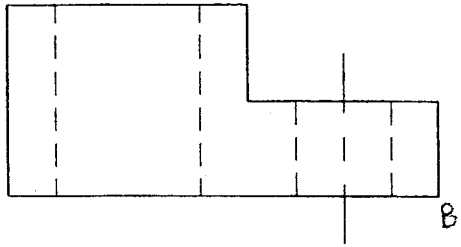
- 1) Draw mechanically the full-section isometric.
  
- 2) Extra Credit: Draw mechanically the half-section isometric.
- 3) Extra Credit: Draw mechanically the half-section isometric (Plate 22).

**Staple this sheet to the front of your drawings in the correct order. Write your name at the top of the page. Write your name on each drawing.**

NAME \_\_\_\_\_



1) Draw mechanically, full scale, the isometric sectional (full-section) as defined by removing the piece defined by A-A.

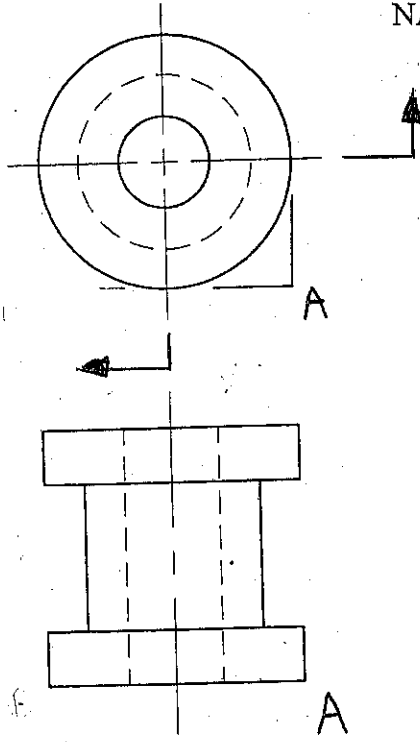


↓  
B

# Extra Credit

NAME \_\_\_\_\_

Extra Credit

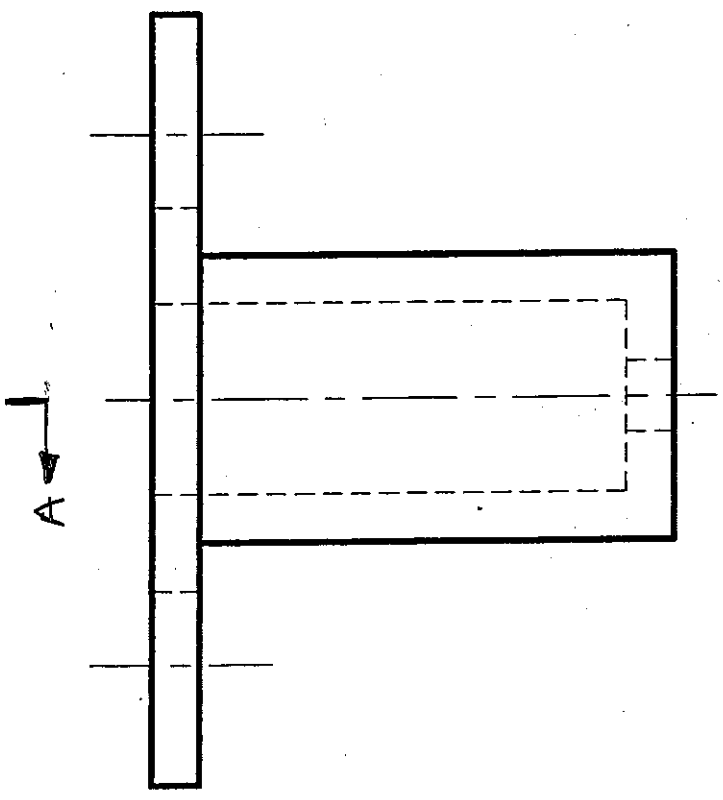
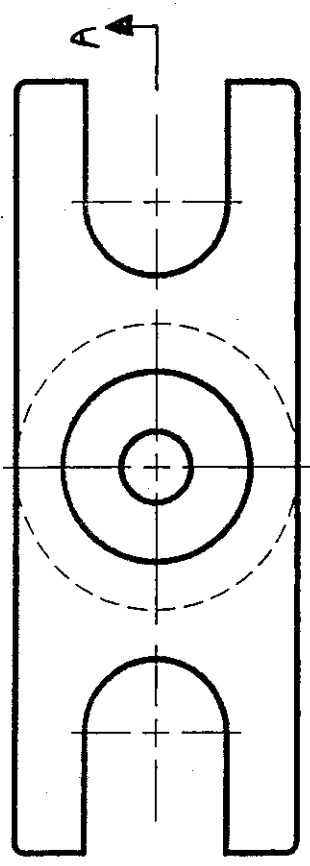


- 2) Draw mechanically, full scale, the isometric sectional (half-section) as defined by removing the piece defined by A-A.



Extra Credit

DRAW MECHANICALLY, FULL SCALE, THE ISOMETRIC SECTIONAL (HALF-SECTION) AS DEFINED BY REMOVING THE PIECE DEFINED BY A-A.



Extra Credit