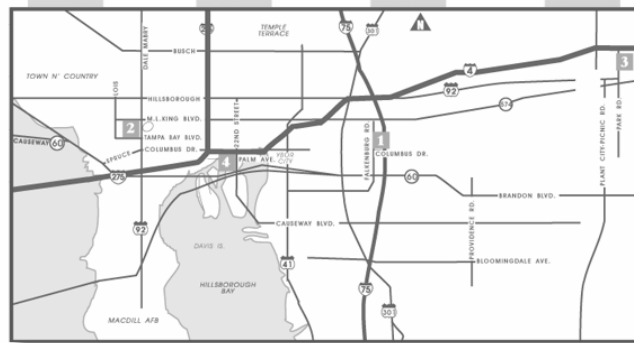


PROGRAM EVALUATION 2004

HILLSBOROUGH COMMUNITY COLLEGE



Program Evaluation 2004
Hillsborough Community College

Program Evaluation 2004 provides a data based reference for program review. Programs are described based on student campus of enrollment, student demographics, and the program enrollment and completion trends for five years.

Program Evaluation 2004 will be accessible from <http://www.hccfl.edu/ir> on November 22 for ease of distribution.

Suggestions are welcome to improve the utility of this reference.

HCC Institutional Research Staff

Produced by: Institutional Research
Newton Beardsley, Special Projects Manager
Katherine Blount, Testing Assistant
Jan Schwartz, Director

TABLE OF CONTENTS

Part One

Transfer Program 1
 Campus of Enrollment 2
 Student Profile 2
 Enrollment and Completion History 3

Part Two

Workforce Programs 4
 Agriculture 5
 Business 7
 Family and Consumer Services 10
 Industrial 12
 Health Services 15
 Marketing 18
 Public Service 20
 Sources 23

Appendix: Student Ethnic Group by Program 24

PART ONE: TRANSFER PROGRAM

Of the 45,867 students enrolled in 2003-2004, 66 percent (N= 30,439) were enrolled in a program and 34 percent (N= 15,428) were undeclared. The College has two primary programs: transfer and workforce. Among students with declared programs, 75 percent (N= 22,768) were in the transfer program, and 25 percent (N= 7,666) were in workforce programs.

The transfer program is a single program of formal record. Transfer program students earn an Associate in Arts (A.A.) degree upon completion. This program requires 36 general education credit hours, and 24 recommended credit courses, to provide 60 credit hour programs. The general education requirements include 15 communications and humanities credit hours, 12 mathematics and natural sciences credit hours, and nine social science credit hours. Students in this curriculum must meet Gordon Rule requirements, and complete an interdisciplinary capstone course. Foreign language requirements not met in high school may be completed at the College.

TRANSFER PROGRAM

Almost half (43 percent, N= 9,882) of the students in the transfer program took the majority of their classes at the Dale Mabry campus. Approximately one-fourth (24 percent, N= 5,472) attended classes at the Brandon Campus, and 22 percent (N= 5,035) attend the Ybor City campus. The remaining 10 percent attended Plant City campus (8 percent, N= 1,812) and the MacDill Center (2 percent, N= 551). Table 1.1 shows campus of enrollment.

Males students constituted 41% of the transfer program students, and 44% were minority students. The median age among transfer students was 22. Table 1.2 shows the student demographic profile.

Table 1.1: Campus of enrollment-Transfer Program, 2003-2004

PROGRAM	DM	YC	BR	PC	MD	N/A	COLLEGE
TRANSFER	9,882	5,035	5,472	1,812	551	16	22,768

Source: HCC IR Headcount Report, 2003-2004.

Table 1.2: Student profile-Transfer Program, 2003-2004

PROGRAM	Gender				Ethnic Group				Mdn Age
	N Females	% Females	N Males	% Males	N Non-Minority	% Non-Minority	N Minority	% Minority	
TRANSFER	13,501	59	9,217	41	12,756	56	9,955	44	22

Not reported Gender, N= 50; Not reported Ethnic Group, N= 57.

Source: HCC IR Headcount Report, 2003-2004.

Figure 1.3- 1.5 show enrollment and completion for transfer program students from 1999-2000 through 2003-2004.

**TRANSFER PROGRAM
ENROLLMENT AND COMPLETION, FIVE-YEAR HISTORY**

Figure 1.3: Transfer Program Enrollment

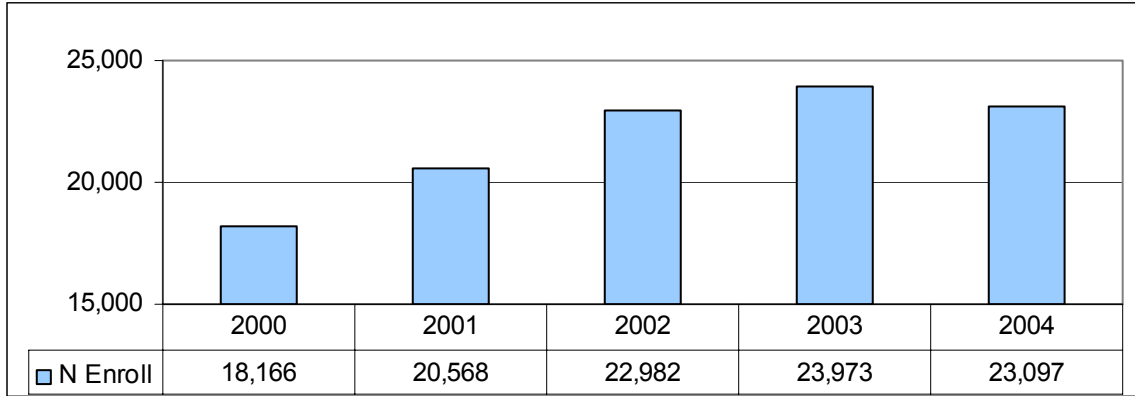


Figure 1.4: Transfer Program Completion

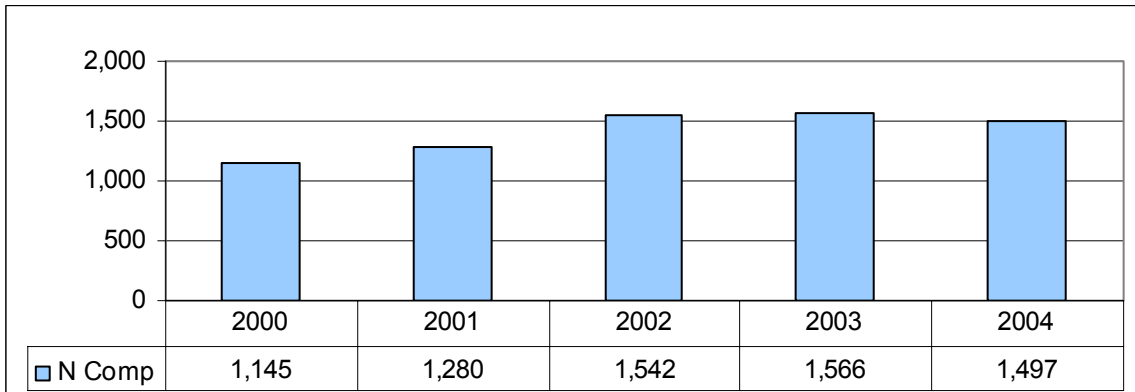
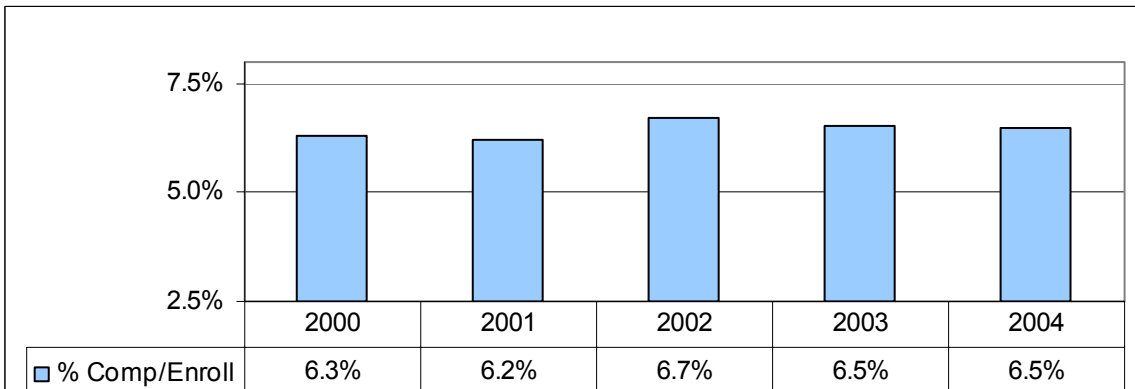


Figure 1.5: Transfer Program Completion as Percent of Enrollment



There is a difference in reporting methods between the FCCS AA1-A and the HCC IR. FCCS AA1-A duplicates enrollment for multiple programs to aid in reporting completions. HCC IR reporting is unduplicated. FCCS enrollment counts will be higher.

Source (Figure 1.3 - 1.5): FCCS, AA1-A Verification Report, 2000-2004.

PART TWO: WORKFORCE PROGRAMS

Workforce programs are diverse in course award, course type and length and award to meet multiple levels of workforce skill development. Table 2.1 indexes programs, course type, range of required hours, enrollment and completion by the type of program award. Enrollment has been highest in the two-year Associate in Science programs, and the Vocational Certificate programs. Completions have been most frequent among Vocational Certificate recipients.

Table 2.1: Workforce Awards, 2003-2004

Program Award	N Programs	Course Type	Hours, Minimum	Hours, Maximum	N Enrolled	N Completed
Associate in Applied Science	34	Credit	60	76	801	33
Associate in Science	43	Credit	60	88	4,218	460
Associate in Science Certificate	29	Credit	12	48	556	185
Advanced Technical Certificate	3	Credit	09	30	9	0
Applied Technical Diploma	3	Credit	11	33	455	279
Vocational Certificate	13	Non-Credit	68	1,400	1,685	710
Apprentice Certificate	7	Non-Credit	8,720	20,460	632	79

Source: HCC Catalog 2004-2005, HCC Careers, Vol. 1, 2004, FCCS AA1-A Verification Report, 2004.

Given the current College effort to strengthen workforce program articulation, and develop explicit career ladders, programs are presented as a combination of programs and awards. Future issues of this report will be organized to reflect the articulated programs with awards subsumed.

Table 2.2 shows the number of enrolled students, the main campus of enrollment, and a student demographic profile summaries by sector. Student ethnic group counts are detailed in the Appendix.

Table 2.2: Number Enrolled, Campus of Majority Enrollment, Percent Males and Minority, Median Age by Sector

Sector	N Enrolled	Campus	% Male	% Minority	Median Age
Agriculture	103	BR	53	42	23
Business	1,458	DM	46	48	29
Family/Cons Serv	365	YC	4	58	35
Health	2,126	DM	36	32	29
Industrial	1,251	DM	87	35	27
Marketing	170	DM	51	41	27
Public Service	2,194	YC	66	38	30

Source: HCC IR Headcount Report, 2003-2004.

The balance of this report presents descriptive program information organized by workforce sector.

WORKFORCE PROGRAMS: AGRICULTURE

In 2003-2004, a total of 103 students had declared programs of record in this sector. The sector is represented by four programs with College record. As shown in Table 2.3, three of the four lead to two-year Associate degrees. Aquaculture Technology is a vocational non-credit certificate program. The majority (54 percent, N= 56) of students in this sector attend classes at the Brandon Campus, and more than one-fourth (28 percent, N=29) attend the Plant City Campus. The remaining 18 percent attend Dale Mabry Campus (15 percent, N= 15) and the Ybor City Campus (3 percent, N= 3). Among the programs, the aquaculture technology certificate program had the largest enrollment (35 percent, N= 36) in 2003-2004. The two-year aquaculture management and environmental horticulture program approximated this enrollment with 32 percent (N= 33) of the sector students enrolled in each of these programs.

Table 2.4 profiles students enrolled in 2003-2004. The program was declared by 53 percent male students, and 42 percent of the students were minority. Student age in these programs ranged from 21 to 31, with a median of 23.

Table 2.3: Campus of enrollment-Agriculture sector, 2003-2004

AWARD	CIP	PROGRAM	DM	YC	BR	PC	HCC
AS/AAS	101030301	AQUACULTURE MGMT	11	1	17	4	33
	101060300	ENVIRONMENTAL HORTI TECH	4	2	2	25	33
	102010100	AGRICULTURAL PROD TECH			1		1
PSVC	101030302	AQUACULTURE TECH			36		36
SECTOR			15	3	56	29	103

Table 2.4: Student profile-Agriculture sector, 2003-2004

PROGRAM	Gender				Ethnic Group				Mdn Age
	N Females	% Females	N Males	% Males	N Non-Minority	% Non-Minority	N Minority	% Minority	
AQUACULTURE MGMT	15	46	18	55	28	85	5	15	23
ENVIRONMENTAL HORTI TECH	13	39	20	61	29	88	4	12	29
AGRICULTURAL PROD TECH			1	100	1	100			31
AQUACULTURE TECH	20	56	16	44	2	6	34	94	21
SECTOR	48	47	55	53	60	58	43	42	23

Source (Table 2.3- 2.4): HCC IR Headcount Report, 2003-2004.

Figures 2.5- 2.7 show enrollment and completions for this sector.

WORKFORCE PROGRAMS: AGRICULTURE ENROLLMENT AND COMPLETION, FIVE-YEAR HISTORY

Figure 2.5: Enrollments

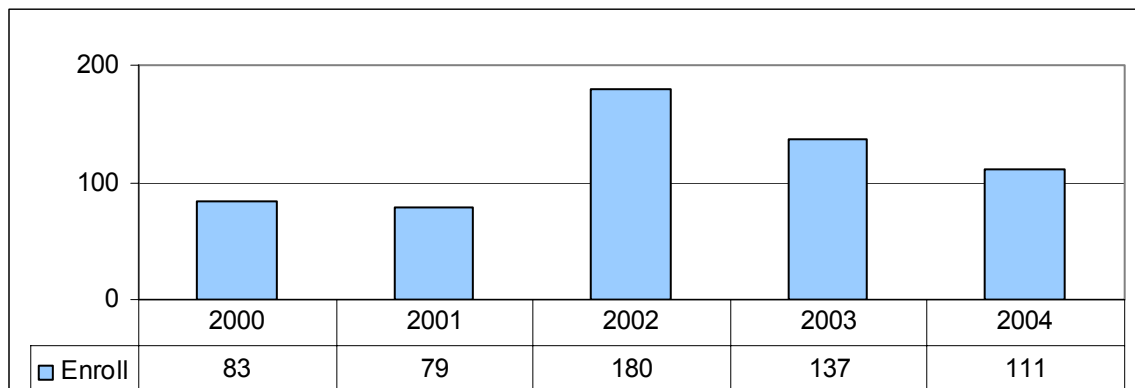


Figure 2.6: Completions

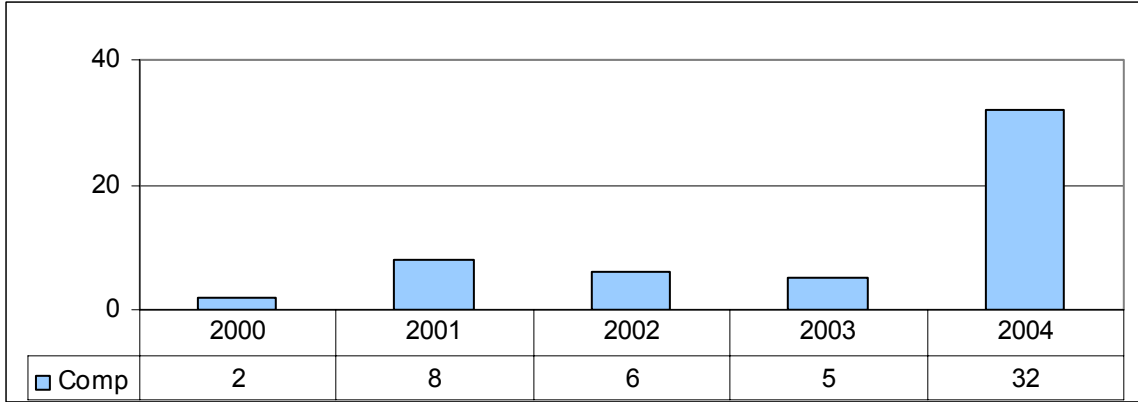
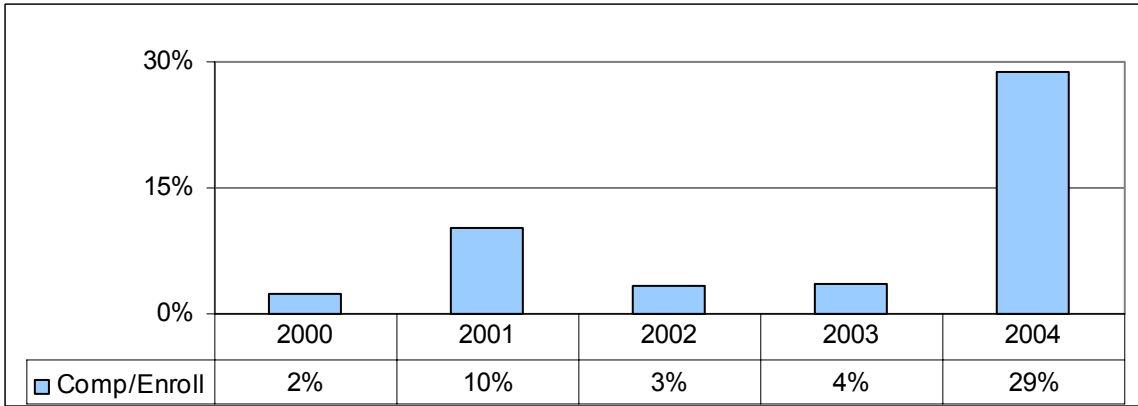


Figure 2.7: Completions as Percent of Enrollments



Source (Figure 2.8.1- 2.8.3): FCCS, AA1-A Verification Report, 2000-2004.

WORKFORCE PROGRAMS: BUSINESS

In 2003-2004, a total of 1,458 students had declared programs of record in this sector. The sector is represented by 22 unique programs with College record. As shown in Table 2.8, eight programs lead to two-year Associate degrees, and 14 earn a vocational certificate. The majority (55 percent, N= 805) of students in this sector attend classes at the Dale Mabry Campus. Almost one-fifth (19 percent, N= 276) attend the Ybor City Campus, and 18 percent (N= 269) attended the Brandon Campus. Among the programs, the business administration two-year program had the highest program enrollment (24 percent, N= 352). Five other two-year programs had enrollments greater than 100 students.

Table 2.9 profiles students enrolled in 2003-2004. The program was declared by 46 percent male students, and 48 percent of the students were minority. Student age in these programs ranges from 21 to 38, with a median of 29.

Table 2.8: Campus of enrollment-Business sector, 2003-2004

Award	CIP	Program	DM	YC	BR	PC	MD	HCC
AS/ AAS	506040102	BUSINESS ADMIN	185	54	70	37	5	351
	507030500	COMPUTER PROG & ANALYSIS	125	26	32	8	3	194
	507010100	ACCOUNTING TECH	88	45	40	15	1	189
	507030401	NETWORK ADMIN	141	9	25	2		178
	507030600	COMPUTER INFORMATION ADMIN	89	25	31	11	5	161
	507060300	OFFICE ADMIN	31	78	19	4	3	135
	507039902	INTERNET SERVICES TECH	47	9	15	4		75
	507030601	AS IN DATABASE TECH	1		1			2
PSVC	50703-0100,0503,9903,0404,0606,0604	COMPUTER PROG COMPUTER PROG SPECIALIST WEB DEVELOPMENT SPECIALIST INFORMATION TECH MGMT INFORMATION TECH SPECIALIST MICROSOFT CERTIFIED DBA	71	2	11	1		85
	50706-0301,0305,0302,0304	OFFICE MGMT MEDICAL OFFICE MGMT OFFICE SUPPORT OFFICE SPECIALIST	9	17	6	3		35
	50604-0103,0104	BUSINESS SPECIALIST BUSINESS OPERATIONS	11	5	5	1	1	23
	507019903	ACCOUNTING APPLICATIONS	4	4	11		2	21
	506180101	BUSINESS MGMT	3	2	3	1		9
SECTOR			805	276	269	87	20	1,458

Multiple campuses N= 1.

WORKFORCE PROGRAMS: BUSINESS

Table 2.9: Student profile- Business sector, 2003-2004

PROGRAM	Gender				Ethnic Groups				Mdn Age
	N Females	% Females	N Males	% Males	N Non-Minority	% Non-Minority	N Minority	% Minority	
BUSINESS ADMIN	203	58	148	42	165	47	186	53	25
COMPUTER PROG & ANALYSIS	68	35	126	65	112	58	81	42	30
ACCOUNTING TECH	136	72	53	28	99	52	90	48	28
NETWORK ADMIN	42	24	136	76	103	58	75	42	31
COMPUTER INFORMATION ADMIN	68	42	93	58	82	51	79	49	30
OFFICE ADMIN	129	96	6	4	55	41	80	59	33
INTERNET SERVICES TECH	46	61	29	39	41	55	34	45	28
AS IN DATABASE TECH	2	100					1	50	27
COMPUTER PROG	19	39	30	61	24	49	24	49	33
OFFICE MGMT	27	96	1	4	20	71	8	29	33
BUSINESS SPECIALIST	11	50	11	50	12	55	10	46	26
ACCOUNTING APPLICATIONS	11	52	10	48	13	62	8	38	33
COMPUTER PROG SPECIALST	3	16	16	84	12	63	7	37	30
WEB DEVELOPMENT SPECIALIST	8	62	5	39	11	85	2	15	31
BUSINESS MGMT	2	22	7	78	4	44	5	56	21
MEDICAL OFFICE MGMT	4	100					4	100	33
INFORMATION TECH MGMT			2	100	2	100			38
OFFICE SUPPORT	2	100					2	100	28
BUSINESS OPERATIONS			1	100	1	100			21
INFORMATION TECH SPECIAL			1	100			1	100	41
MICROSOFT CERTIFIED DBA	1	100					1	100	24
OFFICE SPECIALIST	1	100					1	100	42
SECTOR	783	54	675	46	756	52	699	48	29

Not reported Ethnic Group N= 3.

Source(Table 2.8- 2.9): HCC IR Headcount Report, 2003-2004.

Figures 2.10- 2.12 show enrollment and completions for this sector.

**WORKFORCE PROGRAMS: BUSINESS
ENROLLMENT AND COMPLETION, FIVE-YEAR HISTORY**

Figure 2.10: Enrollments

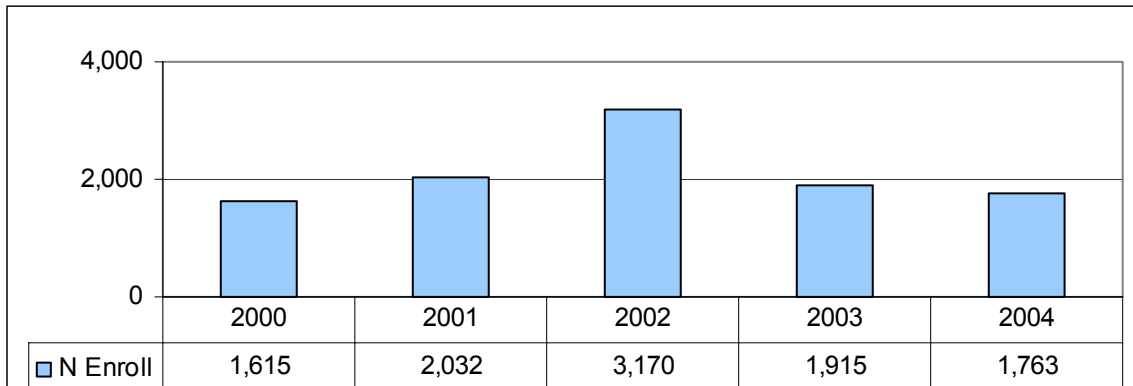


Figure 2.11: Completions

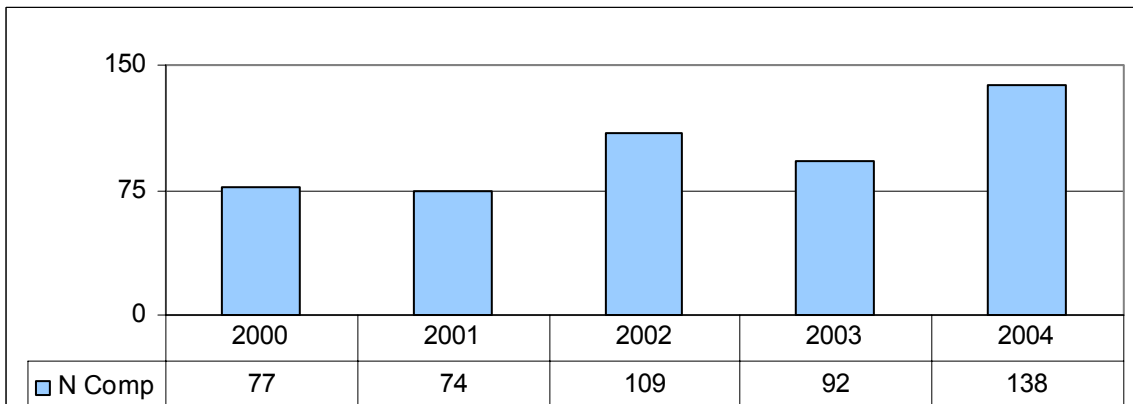
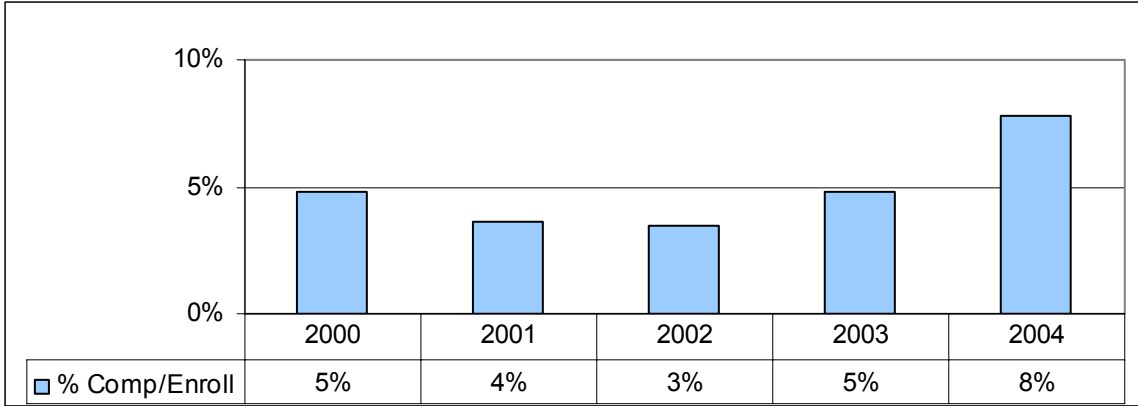


Figure 2.12: Completions as Percent of Enrollments



Source (Figure 2.10- 2.12): FCCS, AA1-A Verification Report, 2000-2004.

WORKFORCE PROGRAMS: FAMILY AND CONSUMER SCIENCES

In 2003-2004, a total of 365 students had declared programs of record in this sector. The sector is represented by three programs with College record. As shown in Table 2.13, two programs lead to two-year Associate degrees, and one is awarded a vocational certificate. Ybor City is the campus attended by the largest student group in these programs (44 percent, N= 162). Dale Mabry and Brandon are the campuses of enrollment for 27 percent (N= 100) and 22 percent (N= 81), respectively. Among the programs, the early childhood education vocational certificate program had the highest program enrollment (56 percent, N= 204). Early childhood management had 157 students enrolled, representing 43 percent of sector enrollment.

Table 2.14 profiles students enrolled in 2003-2004. The program was declared by 4 percent male students, and 58 percent of the students were minority. Student age in these programs ranged from 33 to 38, with a median age of 35.

Table 2.13: Campus of enrollment-Family and Consumer Services sector, 2003-2004

AWARD	CIP	PROGRAM	DM	YC	BR	PC	HCC
Award	CIP Code	Program Title					
AS/AAS	420020300	EARLY CHILDHOOD MGMT	25	74	36	20	157
	404050100	INTERIOR DESIGN TECH	4				4
PSVC	420020210	EARLY CHILDHOOD ED	71	88	45		204
SECTOR			100	162	81	20	365

Multiple campus enrollment, N= 2.

Table 2.14: Student profile-Family and Consumer Services sector, 2003-2004

PROGRAM	Gender				Ethnic Groups				Mdn Age
	N Females	% Females	N Males	% Males	N Non-Minority	% Non-Minority	N Minority	% Minority	
EARLY CHILDHOOD MGMT	151	96	5	3	45	29	112	71	38
INTERIOR DESIGN TECH									
EARLY CHILDHOOD ED	194	95	10	5	102	50	100	49	33
SECTOR	349	96	15	4	150	41	213	58	35

Not reported Gender N=1; Not reported Ethnic Group, N= 2.

Source(Table 2.13- 2.14): HCC IR Headcount Report, 2003-2004.

Figures 2.15- 2.17 show enrollment and completions for this sector

**WORKFORCE PROGRAMS: FAMILY AND CONSUMER SCIENCES
ENROLLMENT AND COMPLETION, FIVE-YEAR HISTORY**

Figure 2.15: Enrollments

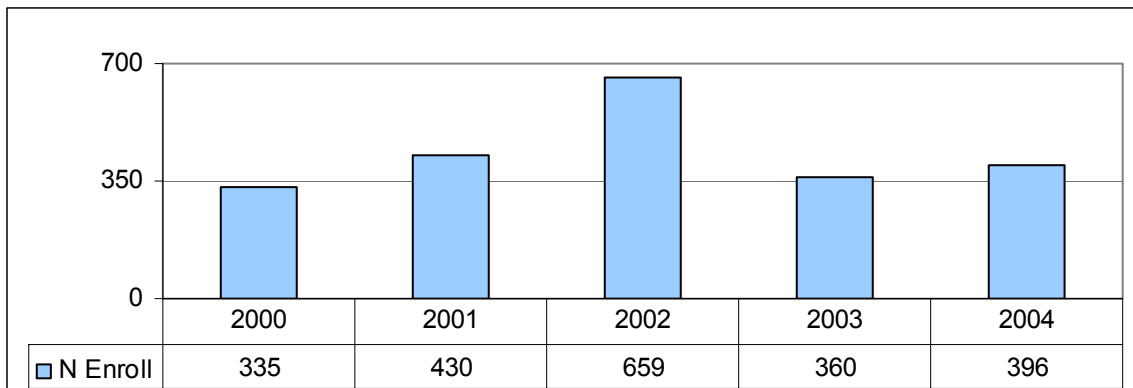


Figure 2.16: Completions

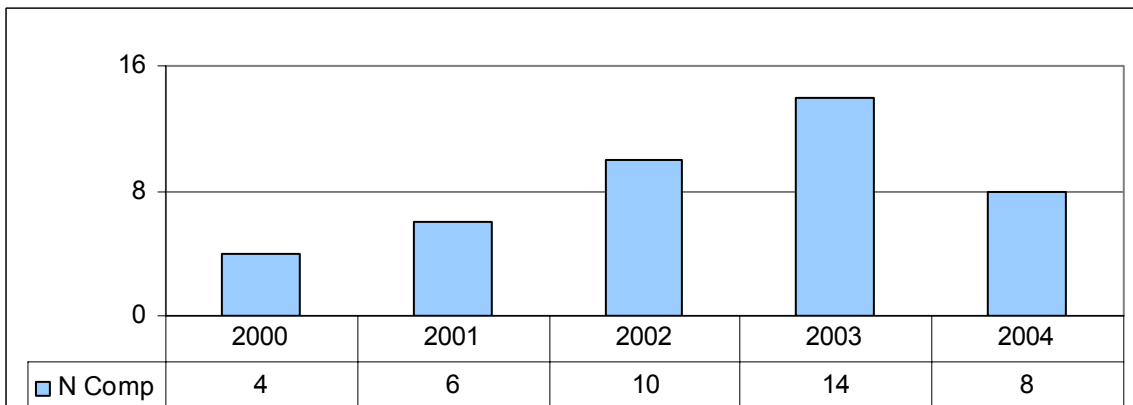
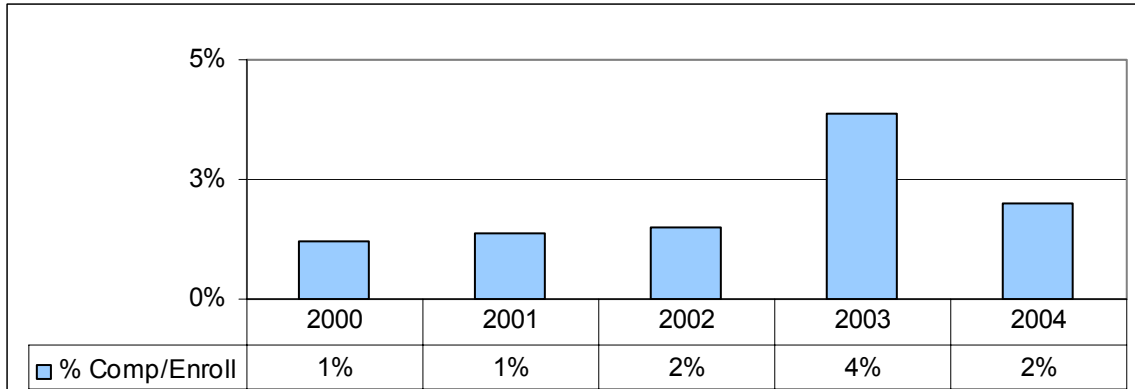


Figure 2.17: Completions as Percent of Enrollments



Source (Figure 2.15- 2.17): FCCS, AA1-A Verification Report, 2000-2004.

WORKFORCE PROGRAMS: INDUSTRIAL

A total of 1,251 students had declared programs of record in this sector in 2003-2004. The sector is represented by 25 programs with College record. As shown in Table 2.18, nine programs lead to two-year Associate degrees. Dale Mabry is the primary campus of enrollment for students in these programs with almost three-fourths of the students on this campus (73 percent, N= 911). Among the programs, the electricity apprentice program had the highest program enrollment (32 percent, N= 400). There were three other programs with enrollments of 100 students or more. Two programs were two-year Associate programs, and the third, another apprentice programs

Table 2.19 profiles students enrolled in 2003-2004. The program was declared by 87 percent male students, and 35 percent of the students were minority. Student age in these programs ranged from 21 to 53, with a median age of 27.

Table 2.18: Campus of enrollment-Industrial sector, 2003-2004

Award	CIP Code	Program Title	DM	YC	BR	PC	MD	HCC
AS/AAS	615040200	COMPUTER ENGINEERING TECH	76	21	13	4	1	115
	615010100	ARCH DESIGN/CONSTRUCTION TECH	95	6	8	4		113
	615030301	ELECTRONICS ENGINEERING TECH	57	11	11	4	2	85
	610010402	RADIO/TV BROADCAST PROG	20	30	11	2	2	65
	620040100	CULINARY MGMT	49	4	5	2		60
	610010202	DIGITAL/MULTIMEDIA TECH	21	5	11			37
	606200101	INDUSTRIAL MANAGEMENT TECH	4	9	9	1		23
	615040101	BIOMEDICAL EQUIP ENGINEER	10	4	3	2		19
	615060302	MANUFACTURING TECH	1		1			2
PSAV	646030202	ELECTRICITY	400					400
	646050302	PLUMBING TECH	23	2		95		120
	647060300	AUTO. COLLISION REPAIR & REF.	1	43				44

	648050600	SHEET METAL FABRICATION TECH.	38					38
	646050202	FIRE SPRINKLER SYSTEM TECH.	34					34
	647020302	REFRIG & HEATING TECH	8			7		15
	647010301	TELECOMMUNICATION TECH	11	2				13
	646020105	CARPENTRY	10					10
PSVC	61504-0201,0202	CISCO CCNA CERTIFICATE MICROCOMPUTER REPAIR/INSTALL	45		2			47
	615020204	AUTOCAD FOUNDATIONS TECH	5					5
	61001-0207,0209,0208	MULTIMEDIA PRODUCTION MULTIMEDIA AUTHORING WEB PRODUCTION	2		2			4
	615010101	DRAFTING ARCH DESIGN TECH	1					1
	615030307	NETWORK COMMUNICATIONS (WAN)				1		1
SECTOR			911	137	76	122	5	1,251

WORKFORCE PROGRAMS: INDUSTRIAL

Table 2.19: Student profile, Industrial programs, 2003-2004

PROGRAM	Gender				Ethnic Group				Mdn Age
	N Females	% Females	N Males	% Males	N Non-Minority	% Non-Minority	N Minority	% Minority	
COMPUTER ENGINEERING TECH	17	15	98	85	46	40	69	60	22
ARCH DESIGN/CONSTRUCTION TECH	27	24	86	76	78	69	35	31	26
ELECTRONICS ENGINEERING TECH	10	12	75	88	42	49	43	51	26
RADIO/TV BROADCAST PROG	20	31	45	69	36	55	29	45	21
CULINARY MGMT	27	45	33	55	32	53	27	45	23
DIGITAL/MULTIMEDIA TECH	20	54	17	46	21	57	16	43	31
INDUSTRIAL MGMT TECH	2	9	21	91	11	48	12	52	21
BIOMEDICAL EQUIPMENT ENGINEER	6	32	13	68	9	47	10	53	30
MANUFACTURING TECH			2	100	1	50	1	50	33
ELECTRICITY	9	2	389	97	286	72	107	27	29
PLUMBING TECH	3	3	116	97	93	78	27	23	28
AUTO. COLLISION REPAIR & REF.	1	2	43	98	27	61	17	39	22
SHEET METAL FABRICATION TECH.	3	8	35	92	22	58	15	40	31
FIRE SPRINKLER SYSTEM TECH.			32	94	29	85	5	15	26
REFRIG & HEATING TECH			15	100	12	80	2	13	33
TELECOMMUNICATION TECH			13	100	12	92	1	8	35
CARPENTRY			10	100	7	70	2	20	28
CISCO CCNA CERTIFICATE	9	20	37	80	34	74	12	26	37
AUTOCAD FOUNDATIONS TECH	1	20	4	80	4	80	1	20	27
MULTIMEDIA PRODUCTION	2	100			2	100			27
DRAFTING ARCH DESIGN TECH			1	100	1	100			31
MICROCOMPUTER REPAIR/INSTALLER			1	100	1	100			34
MULTIMEDIA AUTHORING	1	100					1	100	26
NETWORK COMMUNICATIONS (WAN)	1	100					1	100	53
WEB PRODUCTION			1	100	1	100			23
SECTOR	159	13	1,087	87	807	64	433	35	27

Source (Table 2.18- 2.19): HCC IR Headcount Report, 2003-2004.

Figures 2.20- 2.22 show enrollment and completions for this sector

**WORKFORCE PROGRAMS: INDUSTRIAL
ENROLLMENT AND COMPLETION, FIVE-YEAR HISTORY**

Figure 2.20: Enrollments

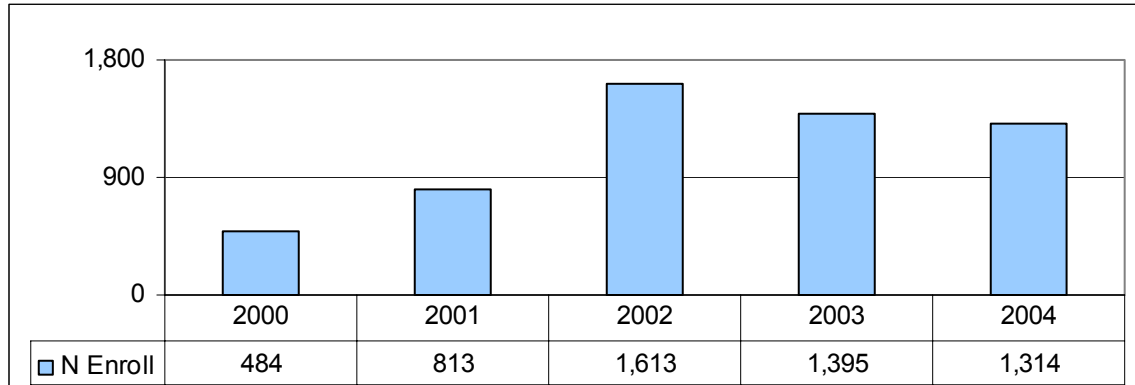


Figure 2.21: Completions

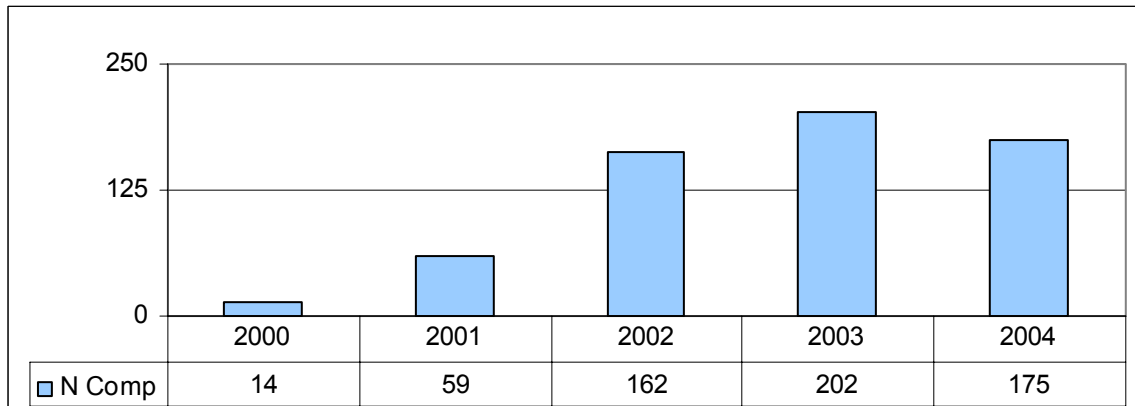
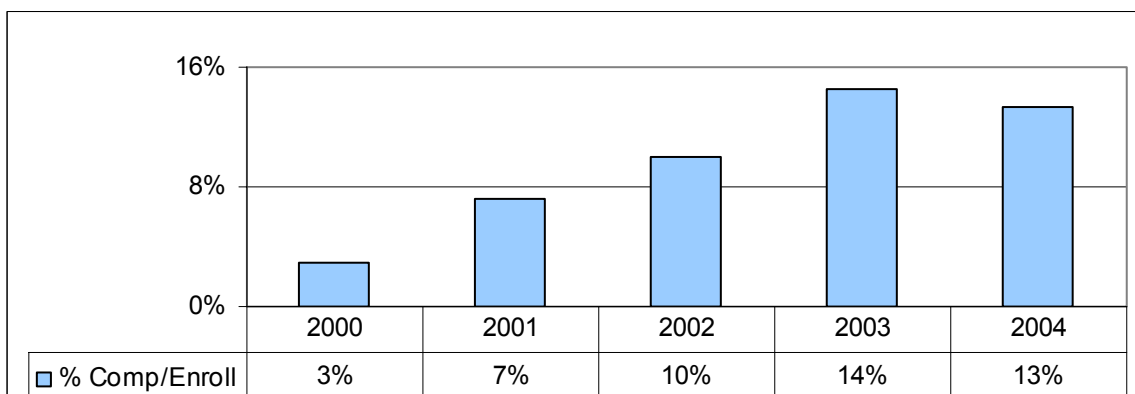


Figure 2.22: Completions as Percent of Enrollments



Source (Figure 2.20- 2.22): FCCS, AA1-A Verification Report, 2000-2004.

WORKFORCE PROGRAMS: HEALTH SERVICES

A total of 2,126 students had declared programs of record in this sector in 2003-2004. The sector is represented by 24 programs with College record. As shown in Table 2.23, half of the programs lead to two-year Associate degrees. Dale Mabry is the main campus of enrollment for students in these programs with about two-thirds of the students on this campus (67 percent, N= 1,416). The two-year nursing program had the highest program enrollment (39 percent, N= 762), followed by the shorter-term vocational Emergency Medical Technician program (21 percent, N= 438). In addition to these two programs, three other programs had enrollments of 100 students or more.

Table 2.24 profiles students enrolled in 2003-2004. The program was declared by 36 percent male students, and 32 percent of the students were minority. Student age in these programs ranged from 22 to 46, with a median age of 29.

Table 2.23: Campus of enrollment-Health Services sector, 2003-2004

Award	CIP Code	Program Title	DM	YC	BR	PC	DM	HCC
AAS	318110100	NURSING	455	60	47	182	18	762
	317070100	OPTICIAN	121		2	1	1	125
	317040600	HUMAN SERVICES	75	13	13	6	1	108
	317021200	DIAGNOSTIC MED SONOGRAPHY	63	1	11	6	1	82
	317020800	NUCLEAR MEDICINE TECH	64	5	6	1	2	78
	317020900	RADIOGRAPHY	52	5	5	3	2	67
	317020601	EMERGENCY MED SERVS-ASSOC DEG	35	19	6	2	2	64
	317020901	RADIATION THERAPY	51	1	2	1	1	56
	317081800	RESPIRATORY CARE	49	6	.	1		56
	317010200	DENTAL HYGIENE	9	2	2	1		14
	317070502	OPTICAL MGMT	7					7
	317080800	OCCUPATIONAL THERAPY ASSISTANT	2	1	1			4
PSAV	317010100	DENTAL ASSISTING	27					27
PSVC	317020600	PARAMEDIC	94	39	3	2		138
	317050607	MEDICAL INF CODER/BILLER	7	51	1			59
	317020903	RADIATION THERAPY SPECIALIST	12		2	1		15
	317070103,0104	EYE CARE TECH OPHTHALMIC LABORATORY TECH	12			1		13
	317021201	DIAGNOSTIC SONOGRAPHY SPEC	2	1				3
ATD	317020503	EMERGENCY MEDICAL TECH	275	100	18	45		438
	317040200	FAMILY HEALTH SUPPORT WORKER	2					2
	317050606	MEDICAL RECORDS TRANSCRIBING		1		1		2
ATC	318110166	NURSING	1	1		1		3
	317020967	RADIOGRAPHY	1		1	1		3
SECTOR			1,416	306	120	256	28	2,126

WORKFORCE PROGRAMS: HEALTH SERVICES

Table 2.24: Student profile, Health Services sector, 2003-2004

	N Females	% Females	N Males	% Males	N Non- Minority	% Non- Minority	N Minority	% Minority	HCC
NURSING	652	86	110	14	486	64	273	36	29
OPTICIAN	78	62	47	38	90	72	34	27	32
HUMAN SERVICES	95	88	13	12	61	57	47	44	34
DIAGNOSTIC MED SONOGRAPHY	76	93	6	7	64	78	18	22	27
NUCLEAR MEDICINE TECH	46	59	32	41	57	73	21	27	30
RADIOGRAPHY	43	64	24	36	36	54	31	46	29
EMERGENCY MED SERVS-ASSOC DEG	24	38	40	63	44	69	20	31	26
RADIATION THERAPY	43	77	12	21	47	84	9	16	30
RESPIRATORY CARE	39	70	17	30	24	43	32	57	28
DENTAL HYGIENE	14	100			8	57	6	43	26
OPTICAL MGMT	4	57	3	43	4	57	3	43	29
OCCUPATIONAL THERAPY ASST	4	100			2	50	2	50	32
DENTAL ASSISTING	24	89	3	11	18	67	9	33	22
PARAMEDIC	31	23	107	78	105	76	33	24	29
MEDICAL INF CODER/BILLER	52	88	6	10	32	54	26	44	44
RADIATION THERAPY SPECIALIST	13	87	2	13	13	87	2	13	29
EYE CARE TECH	6	67	3	33	4	44	5	56	46
OPHTHALMIC LABORATORY TECH			4	100	1	25	2	50	24
DIAGNOSTIC SONOGRAPHY SPEC	2	67	1	33	1	33	2	67	23
EMERGENCY MEDICAL TECH	108	25	330	75	341	78	95	22	26
FAMILY HEALTH SUPPORT WORKER	2	100					2	100	34
MEDICAL RECORDS TRANSCRIBING	2	100			2	100			41
NURSING ,(ATC)	2	67	1	33	3	100			33
RADIOGRAPHY, (ATC)	1	33	2	67	1	33	2	67	22
SECTOR	1,361	64	763	36	1,444	68	674	32	29

Not reported Gender N= 2; Not reported Ethnic Group, N= 32.

Source (Table 2.13- 2.24): HCC IR Headcount Report, 2003-2004.

Figures 2.25- 2.27 show enrollment and completions for this sector

**WORKFORCE PROGRAMS: HEALTH SERVICES
ENROLLMENT AND COMPLETION, FIVE-YEAR HISTORY**

Figure 2.25: Enrollments

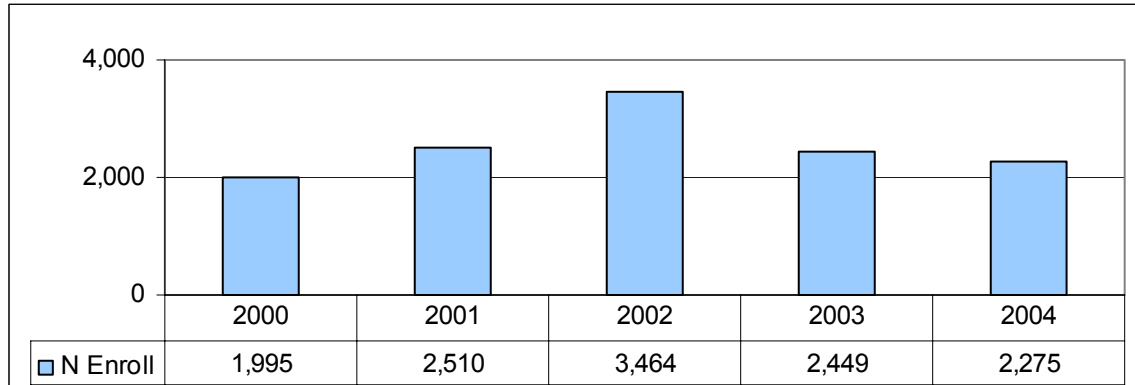


Figure 2.26: Completions

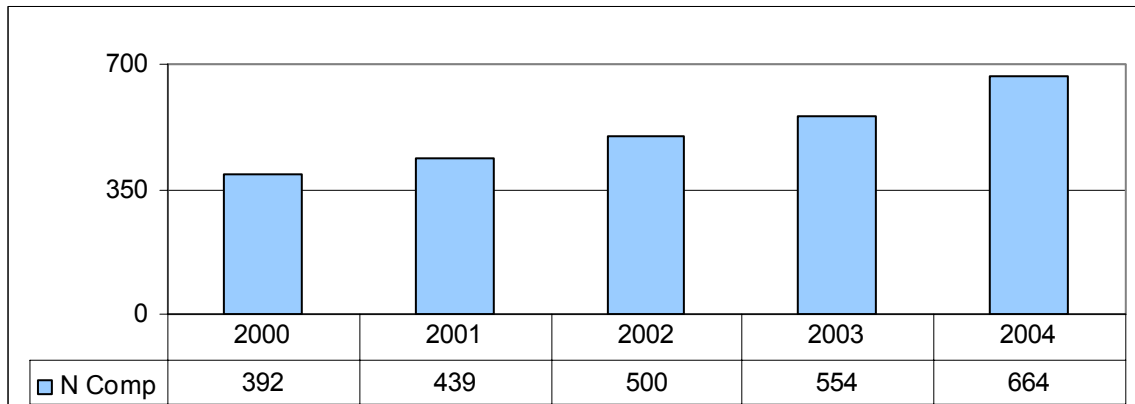
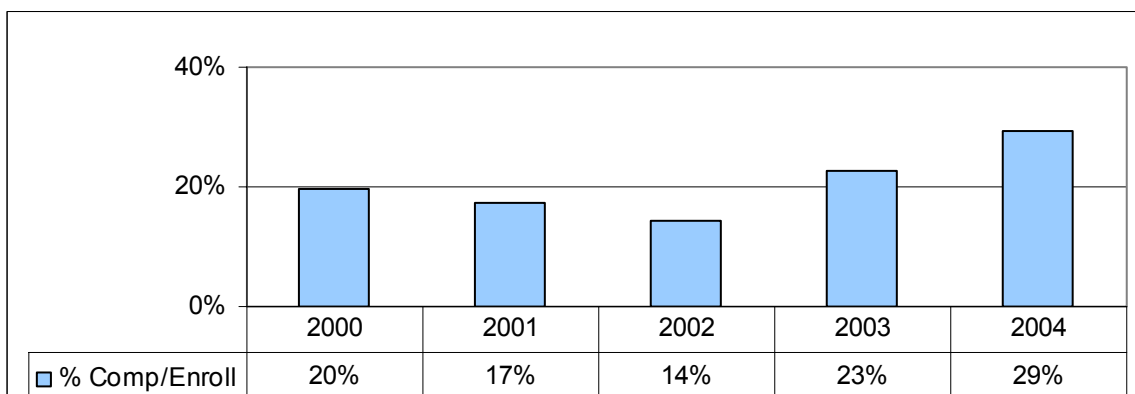


Figure 2.27: Completions as Percent of Enrollments



Source (Figure 2.25- 2.27): FCCS, AA1-A Verification Report, 2000-2004.

WORKFORCE PROGRAMS: MARKETING

In 2003-2004, there were a total of 170 students enrolled in sector programs. The sector is represented by six programs with College record. Of the six programs, four are two-year programs, and two are non-credit vocational programs. This is shown in Table 2.28. All six programs have enrollments of fewer than 100 students. Dale Mabry is the host campus for almost half (48 percent, N= 82 of the marketing students, and Brandon is the campus for an additional 41 percent (N= 69). The two-year Hospitality and Tourism Program had the highest program enrollment (49 percent, N= 83), followed by the shorter-term vocational certificate Insurance General Lines Agent Program (26 percent, N= 35).

Table 2.29 profiles students enrolled in 2003-2004. The program was declared by 51 percent male students, and 41 percent of the students were minority. Student age in these programs ranged from 19 to 36, with a median age of 27.

Table 2.28: Campus of enrollment-Marketing sector, 2003-2004

Award	CIP Code	Program Title	DM	YC	BR	PC	HCC
AAS	206079900	HOSPITALITY & TOURISM MGMT	58	8	12	5	83
	206140100	MARKETING MGMT	4				4
	208999900	CUSTOMER RELATIONSHIP MGMT	1	1	1		3
	206070400	RESTAURANT MGMT		1			1
PSAV	206170101	REAL ESTATE SALES AGENT	18	4	22		44
	208100104	INSURANCE GENERAL LINES AGENT	1	.	34		35
SECTOR			82	14	69	5	170

Table 2.29: Student profile, Marketing sector, 2003-2004

PROGRAM	Gender				Ethnic Group				Mdn Age
	N Females	% Females	N Males	% Males	N Non-Minority	% Non-Minority	N Minority	% Minority	
HOSPITALITY & TOURISM MGMT	38	46	45	54	49	59	34	41	23
MARKETING MGMT	3	75	1	25	2	50	2	50	26
CUSTOMER RELATIONSHIP MGMT	3	100			2	67	1	33	36
RESTAURANT MGMT			1	100			1	100	19
REAL ESTATE SALES AGENT	21	48	23	52	22	50	22	50	32
INSURANCE GENERAL LINES AGENT	18	51	17	49	25	71	10	29	32
SECTOR	83	49	87	51	100	59	70	41	27

Source (Table 2.28- 2.29): HCC IR Headcount Report, 2003-2004.

Figures 2.30- 2.32 show enrollment and completions for this sector

**WORKFORCE PROGRAMS: MARKETING
ENROLLMENT AND COMPLETION, FIVE-YEAR HISTORY**

Figure 2.30: Enrollments

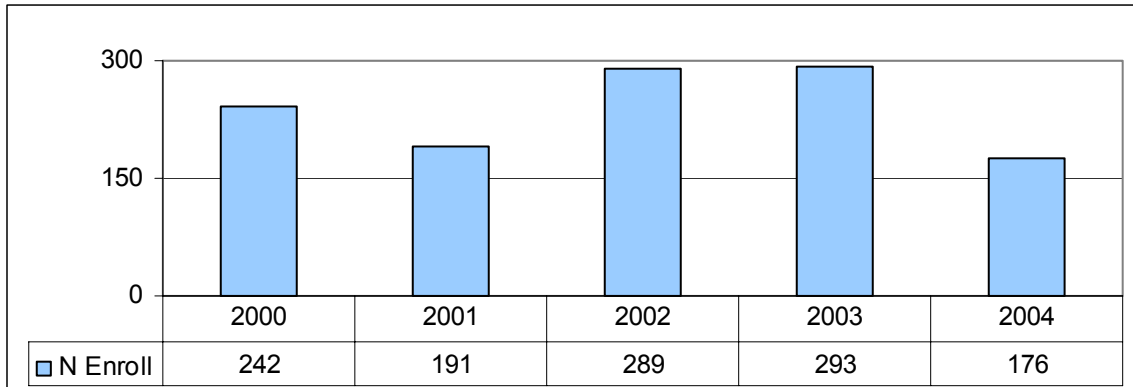


Figure 2.31: Completions

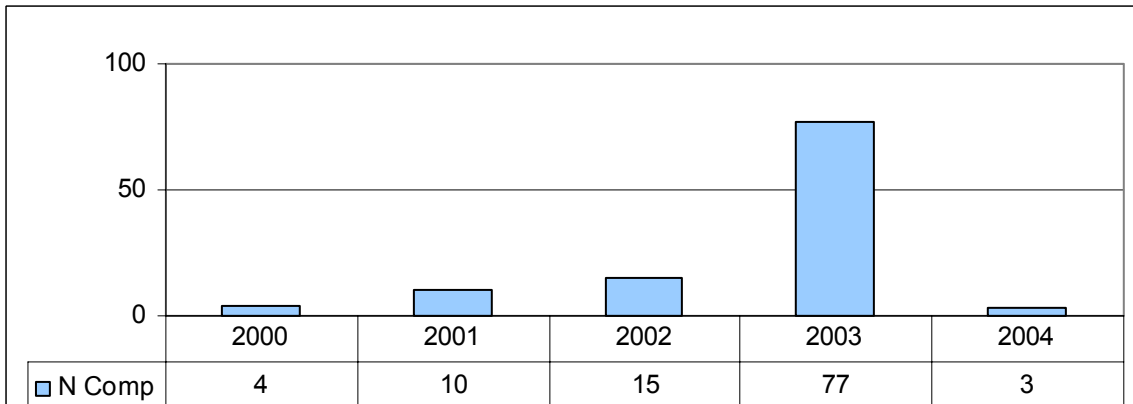
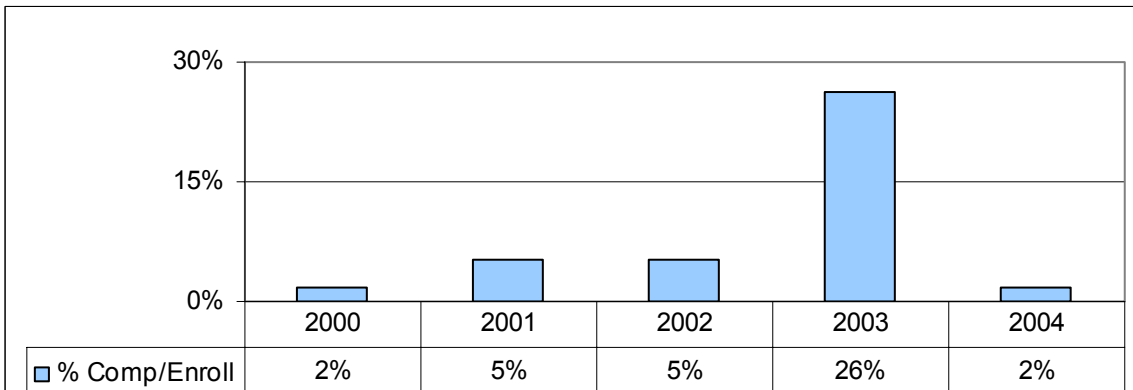


Figure 2.32: Completions as Percent of Enrollments



Source (Figure 2.30- 2.32): FCCS, AA1-A Verification Report, 2000-2004.

WORKFORCE PROGRAMS: PUBLIC SERVICE

In 2003-2004, there were a total of 2,194 students enrolled in sector programs. The sector is represented by 16 programs with College record. As Table 2.33 shows, there are six two-year Associate programs, eight non-credit vocational programs, one credit certificate program, and one technical certificate program. Four degrees are provided in this sector. With 79 percent (N= 1,737) of the sector enrollment, Ybor City is the primary campus for this sector.

Table 2 .34 profiles students enrolled in 2003-2004. The program was declared by 66 percent male students, and 38 percent of the students were minority. Student age in these programs ranges from 19 to 36, with a median age of 27.

Table 2.33: Campus of enrollment-Public Service sector, 2003-2004

Award	CIP Code	Program Title	DM	YC	BR	PC	MD	HCC
AAS	722010300	LEGAL ASSISTING	56	128	22	6	2	215
	743010300	CRIMINAL JUSTICE TECH	96	61	23	21	5	207
	743020100	FIRE SCIENCE TECH	27	91	5	10	2	135
	713100301	SIGN LANGUAGE INTERPRETATION	60	7	8	3		78
	743010301	CRIMINAL JUSTICE OFFICER ADM.	9	38	7	2		56
	715059901	ENVIRONMENTAL SCIENCE TECH	13	5	10	16	1	45
PSAV	74301-0900,0200,0700,0903,0202,0701	PRIVATE SECURITY OFFICER CORRECTIONAL OFFICER LAW ENFORCEMENT OFFICER BAIL BOND AGENT CORRECTIONAL PROBATION OFFICER AUX. LAW ENFORCEMENT OFFICER	8	1,155	3	6		1,172
	743020300	FIRE FIGHTER II	27	232		2		263
	709080100	PUBLIC SAFETY TELECOMM.	1	17	1			19
PSVC	713129903	LIBRARY TECHNICAL ASST	1	1				2
ATC	743020166	FIRE SCIENCE TECH		2				2
SECTOR			298	1,737	79	66	10	2,194

Multiple campuses N = 4.

WORKFORCE PROGRAMS: PUBLIC SERVICE

Table 2.34: Student profile- Public Service Programs, 2003-2004

PROGRAM	Gender				Ethnic Groups				Mdn Age
	N Females	% Females	N Males	% Males	N Non-Minority	% Non-Minority	N Minority	% Minority	
LEGAL ASSISTING	190	88	25	12	126	59	89	41	32
CRIMINAL JUSTICE TECH	121	59	86	42	99	48	107	52	22
FIRE SCIENCE TECH	7	5.2	128	95	105	78	30	22	30
SIGN LANGUAGE INTERPRETATION	69	89	9	12	53	68	25	32	31
CRIMINAL JUSTICE OFFICER ADM.	17	30	39	70	37	66	19	34	25
ENVIRONMENTAL SCIENCE TECH	22	49	23	51	35	78	10	22	27
PRIVATE SECURITY OFFICER	113	19	471	81	279	48	287	49	38
FIRE FIGHTER II	27	10	236	90	201	76	58	22	26
CORRECTIONAL OFFICER	62	25	190	75	161	64	91	36	34
LAW ENFORCEMENT OFFICER	53	24	168	76	156	71	64	29	28
BAIL BOND AGENT	35	49	37	51	29	40	41	57	34
CORRECTIONAL PROBATION OFFICER	12	40	18	60	20	67	10	33	35
PUBLIC SAFETY TELECOMM.	17	90	2	11	11	58	8	42	28
AUX. LAW ENFORCEMENT OFFICER	2	17	10	83	10	83	2	17	40
LIBRARY TECHNICAL ASST	2	100			1	50	1	50	45
FIRE SCIENCE TECH SECTOR			2	100	2	100			41
	749	34	1,444	66	1,325	60	842	38	30

Not reported Gender N = 1; Not Reported Ethnic Group N= 27.

Source (Table 2.33- 2.34): HCC IR Headcount Report, 2003-2004.

Figures 2.35- 2.37 show enrollment and completions for this sector

**WORKFORCE PROGRAMS: PUBLIC SERVICE
ENROLLMENT AND COMPLETION, FIVE-YEAR HISTORY**

Figure 2.35: Enrollments

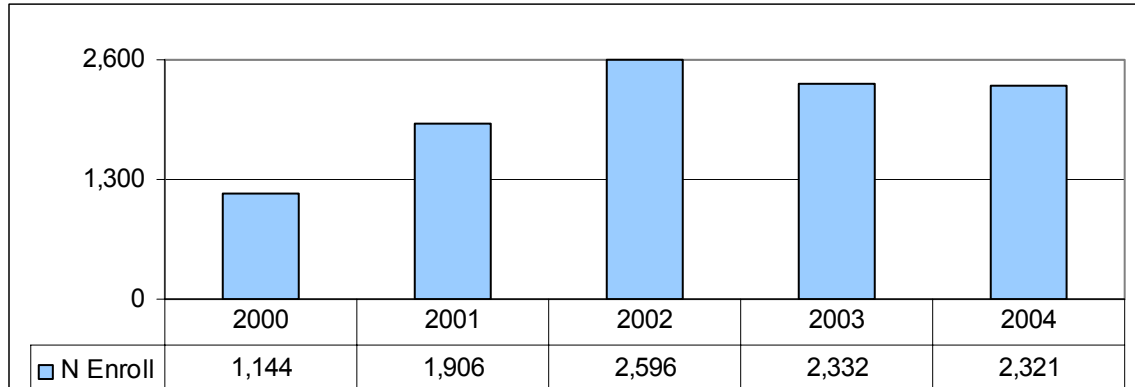


Figure 2.36: Completions

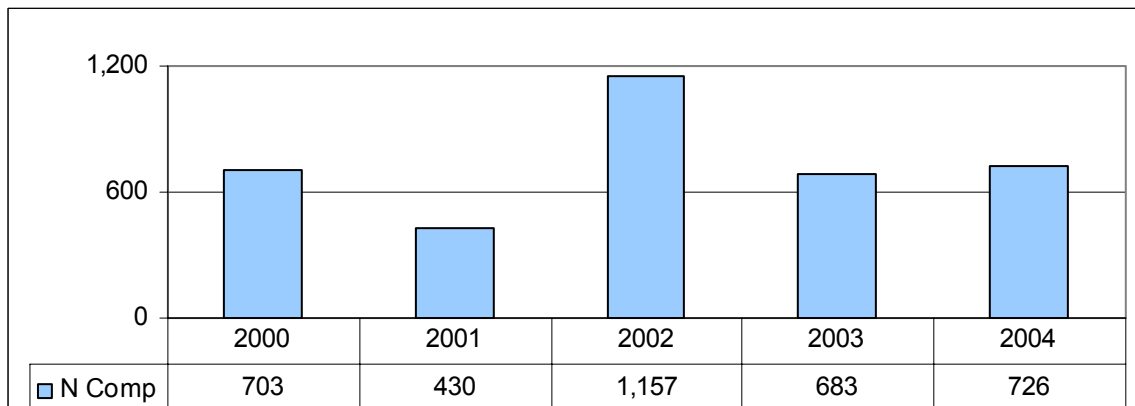
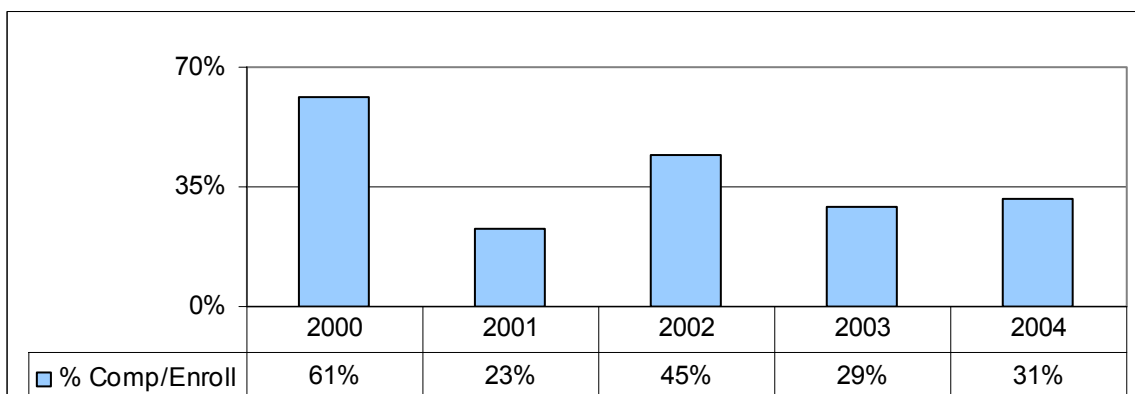


Figure 2.37: Completions as Percent of Enrollments



Sources

Two sources were used for all data presented. The Florida Community College System (FCCS) AA-1A Verification Report is the source for enrollment and completion history. While the FCCS reports have the advantage of internal consistency over reporting years, enrollment count may be duplicated. The duplication is required by the FCCS due to their method of awarding completions only to student with associated records of enrollment.

The second data source is based in the College Datatel records as excerpted to meet FCCS term data transmittals. The records were used to create the HCC IR Headcount Report. This source counts each student once, and was the basis of campus of enrollment and student profile data.