



**Managing Director**

Prof. Dr. K. Eduard LINSENMAIR

E-mail:

ke\_lins@biozentrum.uni-wuerzburg.de

Tel.: +49 931 318 43 51

UNIVERSITY OF WUERZBURG

Theodor-Boveri-Institute of Bioscience

Dept. of Animal Ecology and Tropical  
Biology

Zoology III

Biocenter - Am Hubland

D-97074 Wuerzburg, Germany

**Comoé National Park RESEARCH STATION**

**Representative in Côte d'Ivoire**

Dr. N'Golo A. Koné

NANGUI ABROUGOUA UNIVERSITY

UFR des Sciences de la Nature

**Comoé National Park RESEARCH STATION**

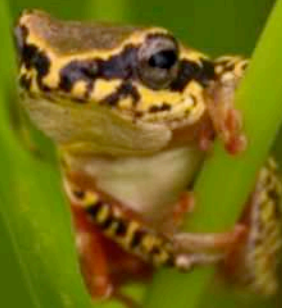
Tel.: +225-0762 0384 or +225-0206 6062

E-mail: ngolo197804@yahoo.fr

# Comoé National Park Research Station

## Information pack

Information on Visa, Medication, Environment and the Research Station



## **Visa Application**

**German Citizens** need to apply for a Visa at the Embassy of Côte d'Ivoire, Schinkelstrasse 10, 14193 Berlin.

Your passport has to be valid for at least 6 months. There is an agreement with the embassy that Bachelor students can get multiple entry visa of up to 6 months and PhD students, post docs and senior researchers up to one year at no costs (visa de courtoisie). Yet undecided is the case of Master students.

For your Visa application you need:

- A valid passport for at least 6 months + a photocopy of the first three pages (photo and address)
- Vaccination pass with yellow fever vaccine
- The filled out online form of the Ivorian embassy (see attachment)
- A Photo ID (size 4.5 cm x 3.5 cm)
- Photocopy of Student card
- Letter of Invitation (obtainable from Prof. Linsenmair)

It is necessary to apply well in advance, at least 6 weeks before departure. Please **always** contact Prof. K. Eduard Linsenmair (ke\_lins@biozentrum.uni-wuerzburg.de) and cc Dr. N'Golo Koné (ngolo197804@yahoo.fr) about the procedure before taking any steps on your own, as you also need an invitation letter (usually issued by Dr N'Golo).

There is also the possibility to apply for a Visa Online. This procedure is however **not** advised for the research station, since you would not get a reimbursement of the Visa costs, which need to be paid in advance when using this form of application.

**International Researchers** or interns please consult Prof. K. Eduard Linsenmair (ke\_lins@biozentrum.uni-wuerzburg.de) and cc Dr. N'Golo Koné (ngolo197804@yahoo.fr) about the appropriate visa application procedure for your country of origin.

If you need further information for your Visa you can look up detailed information at: <http://www.snedai.com/en/>

## **Climate & Environment**

Côte d'Ivoire is situated near the Equator, and therefore has a tropical climate consisting of a wet and dry season. In the Comoé National Park the wet season is usually from April to September, and the dry season from October to March.

The tropical climate means it is extremely humid during the day and warm at night throughout the rainy season. During the dry season it can get relatively cold at night when the Harmattan (wind coming from the Sahara) is blowing (5-6°C). Typical daytime shade temperatures are around 30-35°C (In the dry season during spells of good weather

temperatures may attain >40°C) with the evenings getting relatively cool with 16-22°C (During rainy season 22-26°C).

The tropical savannah environment can be difficult to work in. There are a lot of mosquitoes and tsetse flies, especially during the rainy season, which can be rather annoying in the field. Taking into account the tropical climate and isolation it becomes essential that you are both **physically** and **mentally** fit and able to deal with such an environment. If you know of any pre-existing conditions that could be a problem please let us know in advance and consult your doctor if a research trip to the tropics is advisable. It is important that you understand that there are no possibilities at the research station for immediate medical care, with the nearest medical practitioner being in the next village, roughly one driving hour from the station, and the nearest hospital being roughly 4 hours away from the research station (both of which don't offer state of the art medical equipment or an European level of medical treatment).

## **Travel**

Currently the best way to reach the research station when leaving from Abidjan (normally the best flight destination when coming from abroad) is by taking the eastern land route through the cities of Abengourou, Agnibilekrou and Bondoukou. This trip is best divided up into two days, since traveling by night is not advised. The first part of the trip consists of an approximately 8-hour trip from Abidjan to Bondoukou, which in general you will be doing with public transport. On arrival at Bondoukou somebody from the research station will pick you up and ideally combine the trip to the city with shopping in the local market for food. On the next day you will travel to the research station in one of our land cruisers for a trip that lasts on average 3-4 hours.

Once at the research station there is very little incentive to leave the national park again since not only are the distances quite far but cities also don't offer anything that can't be provided for at the research station.

## **Payment & Money**

For the appropriate payment during your research trip see the attachment below. Once at the research station there are no further costs and you can expect to spend no money during your stay at the station, unless for commodities like alcohol, cigarettes etc.

For your payment please transfer the money in advance to:

**Account holder: K. E. Linsenmair**  
**Bank account: Raiffeisenbank Altherheim**  
**Bank code (BLZ): 79066082**  
**Account number: 1810006**  
**BIC: GENODEF1 AHE**  
**IBAN: DE90 7906 6082 0001 8100 06**

The official currency in Cote d'Ivoire is the West African CFA franc, XOF (with a constant course of 655.957 to 1 Euro). Euros are also sometimes accepted in the big cities. We advise you that upon arrival you exchange some of your Euros into CFAs for travel expenses and potential emergencies (For the 2 day travel time to the research station or back 65.000 CFA are advised to be carried with you, for hotels and public transport). Once at the research station there are **NO** possibilities to obtain or change money, the nearest bank is in Bondoukou and there is no guarantee that there is money available there. The only accepted credit card in Cote d'Ivoire is VISA and most places (even hotels) only accept cash money; so don't count on your credit as a mean to pay for anything.

It is possible to apply for **external funds**, which can cover the travel costs and your stay at the research station. If you are a student at the University of Würzburg you can try to apply for a stipend for an internship abroad at the International Office, programme: PROMOS (There are 2 deadlines per year, at the end of May and mid December), which in general demand a language test to see if you are proficient in English. For more information go to <http://www.international.uni-wuerzburg.de/auslandsstudium/praktika/>

If you are a student at another University there should be similar institutions present at your University offering a similar stipend.

## Research station

The research station consists of a total of 14 living houses with permanent electricity (provided by solar panels), running, potable water, toilet and shower, basic furnishing and the capacity to hold up to four persons per house on average and the possibility to hold up to six researchers on a short term visit. If possible you will be given your own room (if the capacities allow it, otherwise you will have to share the room). The main operating languages at the research station are German and

English, although it is advised to also have basic knowledge in French since our Ivorian employees only speak French and people in Cote d'Ivoire rarely speak another European language.

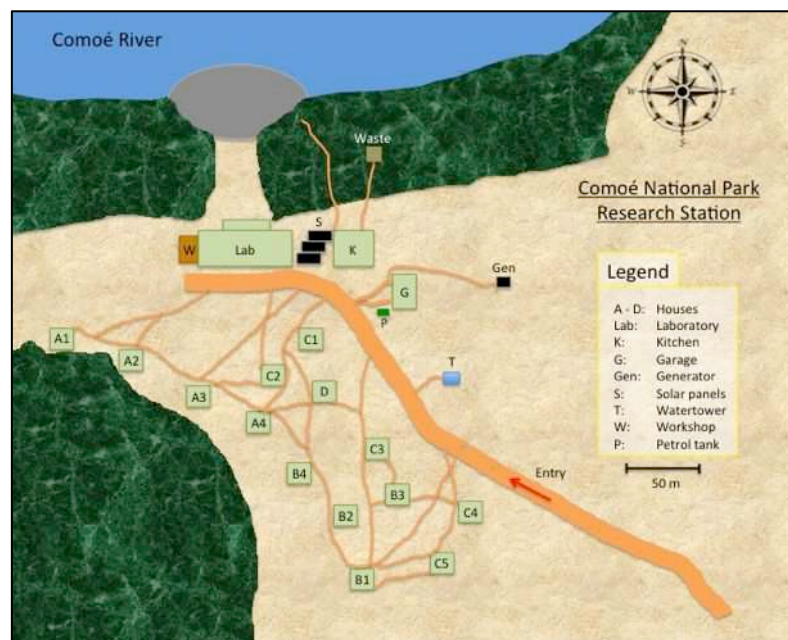


Fig. 1 Map of the Comoé NP Research station

The refectory consists of a large kitchen, which provides two warm meals per day (for lunch and dinner) and breakfast in the morning. The large garage is able to hold up to four Toyota four-wheel drive cars, with a storeroom for spare parts, tools, bicycles and motorcycles. Most of which are usable by the researchers for field experiments.

The laboratory is a large air-conditioned building offering several large laboratories for experiments and also includes basic equipment, six offices, and a potential aviary. **Internet** access is also available in the lab.

For Further information about the research station feel free to have a look at our Homepage at:

**[http://www.biozentrum.uni-wuerzburg.de/comoe\\_research\\_station](http://www.biozentrum.uni-wuerzburg.de/comoe_research_station)**



Fig. 2 Pictures of the Comoé NP Research Station. A: A house; B: The Refectory; C: The lab and solar panels; D: The Garage; E: Overview from Water tower; F: One of the lab rooms.

## **Communication**

Since the installation of the satellite dish at the research station communication has become a lot easier. Even though Internet use is limited, it is more than enough for E-mail reading and writing and even for (**important!**) talks on Skype without video. There is also a VOIP telephone installed in the lab, from which calls can be received and made (Tel.: 0033 970735206). For Telephone communication (with a mobile phone) the first place one can get reception at is the local village of Kakpin located 20 km from the research station just outside the national park. For absolute emergencies there is also a satellite phone connection at the research station, but due to it's extremely high cost it cannot be used for private communications.

## **Health care**

Since there are a lot of health risks in Cote d'Ivoire, as in all tropical countries, it is of paramount importance that all vaccinations are up to date. Therefore it is strongly advised that you check up well in advance (at least 6 weeks before departure, since some vaccinations require several doses) if all your vaccinations are up to date. Also note that for

obtaining a Visa for Cote d'Ivoire it is absolutely mandatory to have a vaccination against **yellow fever**, which is a lethal disease.

**Further recommended Vaccinations:** Hepatitis A, Hepatitis B, Typhoid, Polio, Tetanus-diphtheria-pertussis, Rabies, Meningitis, measles-mumps-rubella.

**Anti-Malarials:** Since Malaria is quite common in Côte d'Ivoire you should get appropriate prophylactic tablets. The medication is normally started before you leave and continued for a short time after you have returned. Please consult a doctor with tropical disease expertise or a travel clinic (in Würzburg e.g. Tropenambulanz, Missionsärztliche Klinik), as there are several different options available to you. Once you have chosen one they will prescribe it to you. Also bring at least one set of **antimalarial medication** in case you get sick.

The best way to decrease the risk of Malaria and other potential illnesses caused by mosquito bites (Dengue fever) are **preventive measurements**.

- Always wear long sleeved shirts and long trousers when in the field and also in the mornings and evenings. It is also recommended to wear closed shoes and socks.
- **Always** sleep under a mosquito net; it is important that the mosquito net is big enough for you to sleep under it without having any body parts touching the net (it should also be tucked in under the mattress). Buy a good quality net that is impregnated with an insecticide.
- Mosquito repellents can also be quite effective. Most of which contain diethyltoluamide (DEET), which is harmful to some hard plastics and paint, and should also not be applied near the eye or mouth.

It is also recommended that you do a dental check up before your departure. Since the nearest Hospital is in the city of Bondoukou, which can take up to 3-4 hours to reach (under dry conditions and up to 2 hours more when raining).

Please enquire with your health insurance company which vaccination and prophylaxis costs they will cover. If you are a student at the University of Würzburg it is possible to get a contribution for not reimbursed costs for obligatory vaccinations out of funds of the faculty of Biology. You need to submit your original bills as soon as possible after your return to the secretary (Frau Bünger) of the Zoology 3 department.

While **Ebola** is a serious disease and health risk in some West African countries (mainly Guinea, Liberia and Sierra Leone), there is not a single case in Côte d'Ivoire and at the moment there is no risk of infection or of a major outbreak, nor does there seem to be one in the imminent future. The borders to Guinea and Liberia are closed and vigilantly patrolled by the Ivorian government and also flights from these countries are not allowed to land in Abidjan. During your travel to and from the research station we would still advise you to take some precautions, try to refrain from handshaking or body contact in general and avoid markets or large clusters of people. In conclusion though, while we advise you to inform yourself about Ebola, there is virtually no risk of contracting it during your stay in Côte



d'Ivoire at the moment. However, the situation might still change in the future, so everyone is advised to seek out new information before departure. (January 2015)

## **Medication**

You should bring a broad-spectrum antibiotic with you in case of potential problems e.g. infected bites, scratches etc. Also please ensure you bring sufficient quantities of any medication you routinely use e.g. inhalers or medication needed in an emergency, like for example an allergic reaction. If your work is going to consist in a lot of fieldwork in the sun it is also recommended that you take with you a lot of high protection factor (SPF) sunscreen, since the sun near the equator is harsher than in Europe. It is important that all necessary medicine is bought in advance in Germany (or country of origin), since Ivorian medicine is of a very sloppy standard, often fake or just badly made.

## **Hygiene risks**

It is important to remember that Côte d'Ivoire is a lesser-developed country and many daily activities that are safe in Germany are not necessarily safe in Cote d'Ivoire.

Except for at the research station tap water is **never** potable and should be avoided if possible, even if locals drink it we are not used to it and will most likely get sick. This also accounts for food. Since hygiene standards are much lower in Hotels and Restaurants it is quite possible for them to carry Salmonella and other infections. Make sure that the food you buy has been properly washed (in case of salads and fruits) or is well cooked. If you are forced to drink tap water (or river water in the field) make sure to have water purification tablets with you (like for example Aquatabs).

Unfortunately AIDS is widespread within Cote d'Ivoire (with a population of 3% HIV-positive patients) and it is therefore of paramount importance to take the appropriate measurements against it. It is also advised therefore to bring with you disposable gloves, since one should always keep in mind the potential risk of contracting HIV through contaminated equipment in a hospital (clean unused syringes and needles are kept in sufficient quantity at the research station if necessary).

## **Dangers in nature**

The potential dangers from predators like lions, leopards, hyenas and crocodiles is rather marginal, since these animals don't see humans as prey and in general prefer to avoid contact with us (they most likely will run away, also most of them no longer live near the station). Potentially dangerous animals to encounter on the other hand are Buffaloes,

Elephants and Hippos (especially at night), particularly when startled or if cut off from their path.

Snakes only rarely are responsible for dangerous injuries as long as proper precautions are taken. One should **never** try to catch or touch a wild snake in the field! When walking on paths or during fieldwork always check the ground and during the night **always** light the path with a torch. Wearing proper closed hiking boots also minimizes the risk of getting bitten. In general most snakes are rather shy and try to avoid us (especially the deadly ones) and have never caused any fatal injuries in the history of the station.

Uncomfortable and painful stings/bites (although not deadly) can be caused by scorpions, predatory bugs, ants, bees and wasps. Most of these can be avoided by using the same precautionary measurements you already take against potential snakebites (see above). Tsetse flies and mosquitoes are unfortunately also part of the daily routine and unavoidable to get stung by during your stay. It is important though to try to minimize these bites by wearing long sleeved clothes, since they are vectors for many illnesses (like dengue fever). Try to also refrain from scratching itchy bites since it increases the probability of a nasty secondary infection. Ticks should also be removed as soon as possible by a forceps, pulling the tick straight out without twisting.

Plants tend to be more dangerous than animals in general and it is therefore important to take into account the risk of falling branches and trees. It is advised to refrain from moving around in the forest during strong storms and rain and **always** inform somebody about the destination of your field trip and expected return time (Always take a compass with you and make yourself familiar with the location of the research station and how to find it again).

**Important: In the field always follow the instructions of your supervisor! If this is not the case it is possible to discontinue your internship/thesis. This is also the case for improper or culturally inappropriate behaviour at the station and cities.**

## **Clothing**

The best field clothes are long trousers (2-3 pairs) and loose, long sleeved shirts. Natural materials such as cotton, which are cool and quick drying, are suitable. We don't recommend you to buy expensive field clothes as these typically become stained or frayed during the expedition. Army surplus shops are a good source of cheap clothing. We recommend lightweight (Season 2) hiking boots/shoes, which will give you sufficient support and protection. Don't buy expensive or leather boots (too hot). Please ensure you have worn in your hiking boots BEFORE you come to camp and that they are comfortable. Many people prefer to wear Wellington boots and these can be bought cheaply in Bondoukou. You will normally have an opportunity to hand wash and dry your clothes every day (washing powder provided at the station).



If you wear contact lenses there should be no reason why you shouldn't continue to do so during your stay, as long as you practice normal high levels of hygiene. However, we suggest you bring a pair of glasses in case your contacts trap any dirt during a field day or when you change them, so if needed you can give your eyes a rest. We recommend your glasses have plastic lenses and to bring a spare pair along as well.

## **Personal Equipment**

### **Essential**

- Rucksack
- Mosquito net (box net is better)
- Head torch plus batteries  
(Batteries are readily available in Bondoukou)
- Personal medical kit
- Sleeping bag and/or sheet sleeping bag (since it can get cold at night)
- Towel
- Lightweight hiking boots/shoes or Wellington boots
- Penknife
- Day pack
- Sun-hat
- Whistle
- Compass
- Photocopies of all documents

### **Recommended**

- Water bottle (plastic bottles available in Bondoukou)
- Binoculars
- Camera
- French phrasebook
- Note book, pen and pencils
- Credit Card (Only Visa is accepted in Ivory Coast)
- Reading material for evenings
- Waterproof jacket/poncho
- Umbrella
- USB pen
- Mosquito repellent
- Water purification tablets (like for example aquatabs)
- Handheld torch
- GPS

### **Provided**

- Washing powder
- Toilet paper
- Soap
- Bed with mattress & pillow

## **Personal first aid kit**

Even though the research station has a well-equipped medical supply, you should bring your own personalised first aid kit as well, in which essential items include:

### **Essential**

- Painkillers (aspirin/paracetamol/ibuprofen)
- Plasters (Band-Aids)
- Antiseptic wipes, cream or spray
- Anti-malarial tablets (**prophylaxes and treatment**)
- General broad spectrum antibiotic

## Recommended

- Antihistamine creams/tablets
- Anti-diarrhoeal tablets
- Sachets of re-hydration powders, such as Diarolyte (essential for replacing lost minerals from excessive perspiration)
- Sun tan lotion
- Support bandage – if you have had any previous ankle/knee injuries

## Voluntary

- Fungicidal cream/antifungal dusting powder
- Eye drops
- Ear drops
- Insect repellents
- Epi Pen for those with strong allergies to stings/bites/nuts etc.
- Any personal medication that you normally need e.g. Asthma inhaler. Please bring spares
- For female expedition members tampax or similar and if prone to cystitis at least one course of preferred treatment

## **IMPORTANT (INSURANCE):**

**Your stay in the tropics is at your own risk.** All accidents, that may occur during your tropical ecological internship or during your thesis-, PhD or other research work, **are not covered and are your responsibility!** Neither University, external funds, nor country are responsible in these situations. It is therefore important to obtain these insurances during your field stay:

- International Travel and Medical insurance (with return transport!)
- Personal liability insurance
- Accident insurance

Make sure that the insurances cover these risks also **internationally** and that the period of validity covers your stay. The insurance costs have to be paid by you.

**Make sure to leave behind, before your departure, address and number of people that can be called in case of an Emergency (see attachment).**

# Comoé Research Station: Costs

Costs include:

- 3 meals (breakfast, lunch, dinner)
- Use of laboratory
- Moderate! Internet usage
- Accomodation

Position	Unfinanced	Financed
University of Würzburg, Ivory Coast Students	20€ (13.000 CFA)/d 500€ (328.000 CFA)/month	25€ (16.500 CFA)/d
Other students	25€ (16.500CFA)/d	30€ (20.000 CFA)/d
PhD Students	20€ (13.000 CFA)/d	30€ (20.000 CFA)/d
Postdoc/Researchers	NA	35€ (23.000 CFA)/d
Technical Assistants	NA	30€ (20.000 CFA)/d
Local Assistants/drivers*	NA	10€ (6.500 CFA)/d *
Tourists/Guests**	NA	50€ (32.500 CFA)/d **
Kids<12years**	NA	20€ (13.000 CFA)/d **

Meals	Costs (reduction if excluded)
Breakfast	5 € (3.500 CFA)
Lunch (simple, no drink)	2.50€ (1.500 CFA)
Lunch (full)	10€ (6.500 CFA)
Dinner	15€ (10.000 CFA) + (3€ (2.000 CFA) Dessert)

Car	Costs
Extra Transport (pick up)	0.50€ (300 CFA)/km
Organised transport (Bondoukou)	11 € (7000 CFA)
Personal car usage	0.70€ (450 CFA)/km
Long car usage	+20€ (13.000 CFA)/month

\* Food half price. Advised to bring own food if possible.

\*\* Only Breakfast included in the price. Laboratory usage & Internet not included.

For students at the University of Würzburg

## Praktikum an der Comoé Forschungsstation

### LS Tierökologie & Tropenbiologie ( Zoologie III)

#### Inhalt

- ☞ Infomaterial über Versicherungsschutz, Schutzimpfungen, allgemeine Hygienemaßnahmen, Reiseapotheke etc.
- ☞ Hinweise und Hilfestellungen für das Praktikum in Tierökologie & Tropenbiologie

Ich bestätige, die Merkblätter mit Informationen zur Reise in die Tropen erhalten und den Inhalt zur Kenntnis genommen zu haben. **Ich verpflichte mich zur Einhaltung aller aufgeführten Richtlinien.**

.....  
Datum, Unterschrift

\*\*\*\*\*

**Bitte angeführte Informationen VOR der Reise bei Prof. K. E. Linsenmair abgeben!**

#### *Teilnehmer*

Name Vorname .....

Anschrift am Studienort .....

Telefon .....

Handy .....

Email .....

#### **Betreuer vor Ort**

.....

#### **Wer ist im Notfall zu informieren?**

##### *Notfallanschrift:*

Name Vorname .....

Anschrift .....

Telefon .....

Handy .....

E-mail .....

For Researchers and International Students

## Comoé NP Research Station

Department of Animal ecology & tropical biology (Zoology III)

### Content

- ☞ Info material about insurance, vaccinations, hygiene and health risks, medical equipment etc.
- ☞ Hints and advise for correct behaviour during a stay in a tropical research station

I hereby confirm to have read the information for my travel into the tropics and **I oblige to follow the guidelines set up in the information material.**

.....  
Date, Signature

\*\*\*\*\*

**Please hand in this information BEFORE your departure to Prof. K. E. Linsenmair!**

### *Participant*

Surname, name .....

Address .....

.....

.....

Telephone number .....

Mobile number .....

Email .....

### **Supervisor in the field**

.....

### **Who is to be contacted in case of an emergency?**

#### *Emergency address:*

Surname, name .....

Address .....

.....

.....

Telephone number .....

Mobile number .....

E-mail .....

## Formulaire de demande de Visa/ Application for Visa

<b>Durée du séjour</b> (Length of stay-Duration)		<input type="checkbox"/> <b>Transit (de 1 à 3 jours)</b> Transit (from 1 to 3 days)		<b>Service qui établit le Visa</b> (Visa's establisher)		<input type="checkbox"/> <b>Ambassade</b> (Embassy)							
		<input type="checkbox"/> <b>Court séjour (un jour à trois mois)</b> Short stay (from 1 to 3 months)				<input type="checkbox"/> <b>DST (Côte d'Ivoire)</b>							
		<input type="checkbox"/> <b>Long séjour (1 à 2 ans)</b> Long stay (from 1 to 2 years)											
<b>Nom (en majuscule)</b> Surname(Capital letter)												<b>RESERVE A L'ADMINISTRATION</b>	
<b>Nom de jeune fille</b> (Maiden name)												Date du dépôt de la demande	
<b>Prénom(s):</b> (Given name)													
<b>Nom du conjoint :</b> (Husband name)												Dossier traité par:	
<b>Date de naissance:</b> (Date of birth)		J		M		A		<b>Sexe:(Gender)</b>	M		F		Pièces jointes :
<b>Lieu de naissance:</b> (Place of birth)												1. _____	
<b>Situation matrimoniale</b> (Marital's Status)		C	M	D	V							2. _____	
<b>Nationalité d'Origine</b> (Origin Nationality)												3. _____	
<b>Nationalité Actuelle :</b> (Present Nationality)												4. _____	
<b>Résidence actuelle :</b> (Present residence)												5. _____	
												6. _____	
												7. _____	
<b>Profession (Occupation) :</b>												<b>Photo</b>	
<b>Passeport N° (Passport N°) :</b>													
<b>Délivré le (issued on) :</b>		J		M		A		<b>Par : (by)</b>					
<b>Valable jusqu'au (valid until)</b>		J		M		A							
<b>Type de passeport (Passport type) :</b>		<input type="checkbox"/> Passeport ordinaire (Ordinary passport)				<input type="checkbox"/> Passeport diplomatique (Diplomatic passport)							
		<input type="checkbox"/> Passeport de service (Passport of Service)				<input type="checkbox"/> Tout autre document de voyage (Other travelling documents)							
<b>Nature du visa sollicité</b> (Type of visa applied for)		<input type="checkbox"/> Visa Ordinaire (Ordinary visa)		<input type="checkbox"/> Visa de courtoisie (Courtesy visa)		<input type="checkbox"/> Visa diplomatique (Diplomatic visa)							
<b>Durée du visa sollicité</b> (Validity period of visa)		<input type="checkbox"/> Transit (de 1 à 3 jours) (Transit : from 1 to 3 days)		<input type="checkbox"/> Court séjour (de 1 jours à trois mois) (Short stay : from 1 day to 3 months)									
		<input type="checkbox"/> Sortie-retour (un an) (In an out : 1 year)											
<b>Motifs du voyage :</b> (Reasons of travelling)		<input type="checkbox"/> Affaires (Business)		<input type="checkbox"/> Mission (Mission)									
		<input type="checkbox"/> Vacances-Loisirs (Holidays-Leisure)		<input type="checkbox"/> Etudes /Recherches (Study/Research)									
		<input type="checkbox"/> Santé (Health)											
<b>Date de depart</b> (Departure date)		J		M		A							
<b>Adresse en Côte d'Ivoire</b> (Address in Côte d'Ivoire)													
<b>Nom (Name)</b>													
<b>Adresse (Address)</b>													
<b>Téléphone (Phone number)</b>													

Indiquez avec précision les noms et adresses (rue et n°) des commerçants ou industriels que vous désirez rencontrer s'il s'agit d'un voyage d'affaires : (Indicate precisely names and addresses of merchants and industrialists you wish to meet on your business trip)

Nom (Name)

Adresse (Address)

Nom (Name)

Adresse (Address)

Nom (Name)

Adresse (Address)

Vous engagez-vous à n'accepter aucun emploi rémunéré ou au pair pendant votre séjour en Côte-d'Ivoire, à ne pas chercher à vous y installer définitivement et à quitter le territoire ivoirien a l'expiration du visa qui vous sera éventuellement accordé ?

(Do you agree not to accept any employment, either at a salary or for room and board during your stay in Côte d'Ivoire, not to remain in Côte d'Ivoire permanently and leave the territory of the expiration of the ration of the visa which may be granted to you?)

Ma signature engage ma responsabilité et m'expose, en sus de poursuites prévues par la loi en cas de FAUSSE déclaration, à me voir REFUSER TOUT VISA A L'AVENIR

(My signature renders me responsible, and in case of any false statements, in addition to any penalties imposed by law, I understand that I may be refused any Côte d'Ivoire visa in the future)

Signature du requérant(Applicant's signature)

Signature du représentant de l'autorité (Authority's signature)