

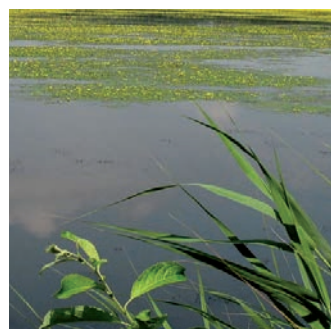
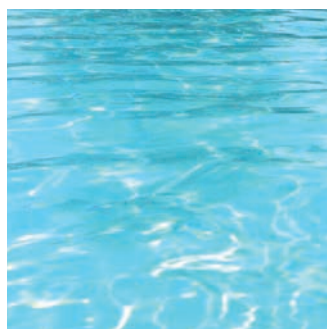
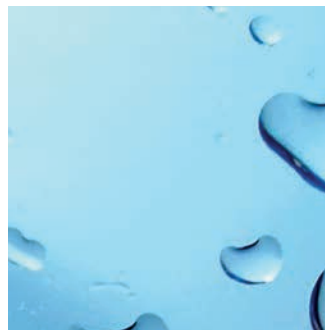
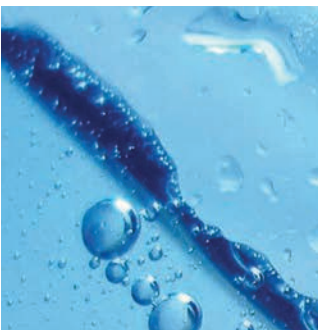
Gosselin Water Testing Selection Guide

Water control for safe water

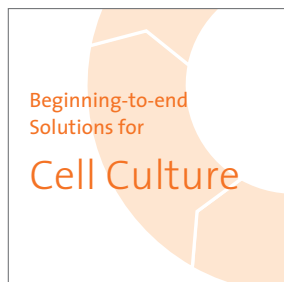
GOSELIN™

A Corning Brand

Quality products for reliable results



Beginning-to-end Solutions for ...



www.corning.com/lifesciences/solutions

At Corning, cells are in our culture. In our continuous efforts to improve efficiencies and develop new tools and technologies for life science researchers, we have scientists working in Corning R&D labs across the globe, doing what you do every day. From seeding starter cultures to expanding cells for assays, our technical experts understand your challenges and your increased need for more reliable cells and cellular material.

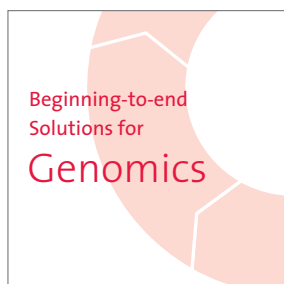
It is this expertise, plus a 160-year history of Corning innovation and manufacturing excellence, that puts us in a unique position to offer a beginning-to-end portfolio of high-quality, reliable cell culture consumables.



www.corning.com/lifesciences/solutions

At Corning, we continuously strive towards improving efficiencies and developing new products and technologies for life science researchers. From assay preparation to storage, our technical experts understand your challenges and your increased need for high-quality products.

It is this expertise, plus a 160-year legacy of Corning innovation and manufacturing excellence, that puts us in a unique position to be able to offer a beginning-to-end portfolio of high-quality, reliable life sciences consumables.



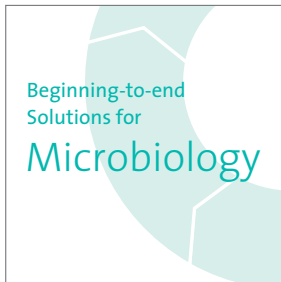
www.corning.com/lifesciences/solutions

In our continuous efforts to improve efficiencies and develop new tools and technologies for life science researchers, we have scientists working in Corning R&D labs doing what you do every day, across the globe. From collection to analysis, our technical experts understand your challenges and your need for simplified, efficient, low- to high-throughput genomics processes.

A combination of global manufacturing expertise, extensive use of in-house automation, an unsurpassed commitment to product innovation and a thorough understanding of your processes enables Corning to offer a beginning-to-end portfolio of high-quality, reliable consumables and reagents for genomics applications.



Beginning-to-end Solutions for Microbiology



www.corning.com/lifesciences/solutions



For premium quality and performance in quality testing labs, you can count on Corning. In our continuous efforts to improve efficiencies and develop new tools for microbiology applications, we have scientists working in Corning labs doing what you do every day, across the globe. From sampling and preparation to bacteria growth and analysis, our technical experts understand your challenges and the changing regulatory requirements that shape your day-to-day processes.

It is this expertise, plus a 160 year legacy of Corning innovation and manufacturing excellence, that puts us in a unique position to be able to offer high-quality, reliable microbiology consumables for quality testing labs. The recent introduction of our Gosselin™ brand line of consumables including Petri dishes, dippers and inoculating loops, has completed our portfolio, creating a beginning-to-end solution for quality testing labs across industry segments.

This brochure provides a step-by-step guide highlighting the Corning products and brands which support the quality testing process at each stage. Detailed product information is available on our website at www.corning.com/lifesciences/solutions.



Sampling



Preparation



Testing



Analysis



Disposal



Corning Brands for Microbiology



Gosselin™ brand products are optimized for both Food & Beverage and Environmental Testing Laboratories. The line of quality testing consumables complies with international safety standards, and includes a range of features to ensure traceability. For full information on Gosselin products, visit www.gosselin.eu



For over 95 years, Corning has developed special glass for use in both chemical and life science laboratories. PYREX glassware is made from Type 1, Class A low expansion borosilicate glass that has become the accepted standard in chemistry labs across the globe.

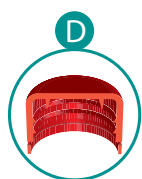
PYREX glassware is available in Europe through SciLabware Limited.

PET octagonal bottles

250 mL to > 1000 mL



ISO 5667-3
ISO 19458



Tamper-evident screw cap with inner lip

Sampling



- ▶ Polyethylene terephthalate bottles
- ▶ Unbreakable
- ▶ Transparent as glass
- ▶ Molded graduations
- ▶ Label for traceability
- ▶ Tamper-evident, leak proof screw cap

PET Octagonal bottles with $\text{Na}_2\text{S}_2\text{O}_3 \cdot 5\text{H}_2\text{O}$

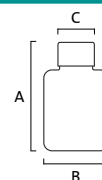
Cat. No.	Volume (mL)	A (mm)	B (mm)	C (mm)	Cap type	Qty/case	Thiosulfate sodium (mg/L)	Sterile SAL 10^{-3}
HP250B-50	250	135	64x64	31,7		144	20	✓
HP250B-51	250	135	64x64	31,7		144	120	✓
HP250B-52 *	250	135	64x64	31,7		150	20	✓
HP250B-53 *	250	135	64x64	31,7		150	120	✓
HP500B-50	500	170	76x76	31,7		120	20	✓
HP500B-51	500	170	76x76	31,7		120	120	✓
HP500B-52 *	500	170	76x76	31,7		90	20	✓
HP500B-53 *	500	170	76x76	31,7		90	120	✓
HP1000B-50	1000	214	96x96	31,7		48	20	✓
HP1000B-51	1000	214	96x96	31,7		48	120	✓
HP1000B-52 *	1000	214	96x96	31,7		45	20	✓
HP1000B-53 *	1000	214	96x96	31,7		45	120	✓

PET Octagonal bottles without $\text{Na}_2\text{S}_2\text{O}_3 \cdot 5\text{H}_2\text{O}$

Cat. No.	Volume (mL)	A (mm)	B (mm)	C (mm)	Cap type	Qty/case	Thiosulfate sodium (mg/L)	Sterile SAL 10^{-3}
P250B-51	250	135	64x64	31,7		144	-	✓
P250B-52 *	250	135	64x64	31,7		150	-	✓
P500B-51	500	170	76x76	31,7		120	-	✓
P500B-52 *	500	170	76x76	31,7		90	-	✓
P1000B-51	1000	214	96x96	31,7		48	-	✓
P1000B-52 *	1000	214	96x96	31,7		45	-	✓

* 1 piece/bag Sterile SAL 10^{-3} Aseptic Without Thiosulfate sodium

A: Height with cap
B: Width of bottle
C: Internal diameter of neck



HDPE square bottles

500 mL & 1000 mL



Hinged cap with inner lip and safety ring

Sampling



- ▶ HDPE bottles
- ▶ Unbreakable
- ▶ Tamper-evident, leak proof screw cap
- ▶ Translucent
- ▶ Label for traceability
- ▶ Molded graduations

HDPE Square bottles with $\text{Na}_2\text{S}_2\text{O}_3\cdot 5\text{H}_2\text{O}$

Cat. No.	Volume (mL)	A (mm)	B (mm)	C (mm)	Cap type	Qty/case	Thiosulfate sodium (mg/L)	Sterile SAL 10 ⁻³
HFC500-01	500	146	70x70	37		100	20	✓
HFC510-01	500	148	70x70	29		100	20	✓
HFC510-02	500	148	70x70	29		100	120	✓
HFC510-03 *	500	148	70x70	29		100	20	✓
HFC510-04 *	500	148	70x70	29		100	120	✓
HFC520-01	500	160	70x70	22		100	20	✓
HFC520-06	500	160	70x70	22		100	120	✓
HFC520-02 *	500	160	70x70	22		100	20	✓
HFC520-07 *	500	160	70x70	22		100	120	✓
HFC1000-50	1000	182	82x82	28		77	20	✓
HFC1000-51	1000	182	82x82	28		77	120	✓
HFC1000-53 *	1000	182	82x82	28		77	20	✓
HFC1000-52 *	1000	182	82x82	28		77	120	✓

* 1 piece/bag Sterile SAL 10⁻³ Aseptic Without Thiosulfate sodium

HDPE Square bottles without $\text{Na}_2\text{S}_2\text{O}_3\cdot 5\text{H}_2\text{O}$



Cat. No.	Volume (mL)	A (mm)	B (mm)	C (mm)	Cap type	Qty/case	Thiosulfate sodium (mg/L)	Sterile SAL 10 ⁻³
FC500-12	500	146	70x70	37		100	-	✓
FC510-07	500	148	70x70	29		100	-	✓
FC520-12	500	160	70x70	22		100	-	✓
FC1000-18	1000	182	82x82	28		65	-	✓

Sterile SAL 10⁻³ Aseptic Without Thiosulfate sodium

HDPE square bottles

250 mL to > 2000 mL



ISO 5667-3
ISO 19458



Sampling

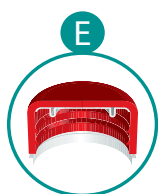


- ▶ HDPE bottles
- ▶ Unbreakable
- ▶ Graduated surface
- ▶ Translucent
- ▶ Leak proof closure system
- ▶ Tamper-evident, leak-proof screw cap

HDPE Square bottles with $\text{Na}_2\text{S}_2\text{O}_3\cdot 5\text{H}_2\text{O}$

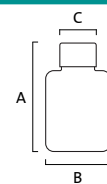
Cat. No.	Volume (mL)	A (mm)	B (mm)	C (mm)	Cap type	Qty/case	Thiosulfate sodium (mg/L)	Sterile SAL 10 ⁻³
HLC250-01	250	109	57x57	37		210	20	✓
HLC250-02 *	250	109	57x57	37		182	20	✓
HLC520-01	500	128	75x75	55		140	20	✓
HLC520-04 *	500	128	75x75	55		162	120	✓
HLC1020-01	1000	187	92x77	55		85	20	✓
HLC1020-02	1000	187	92x77	55		85	120	✓
HLC2020-01	2000	237	110x93	58		50	20	✓
HFV250-01	250	155	60x45	20		312	20	✓
HFV250-02 *	250	155	60x45	20		200	20	✓

* 1 piece/bag Sterile SAL 10⁻³ Aseptic Without Thiosulfate sodium



Tamper-evident screw cap with shaped seal

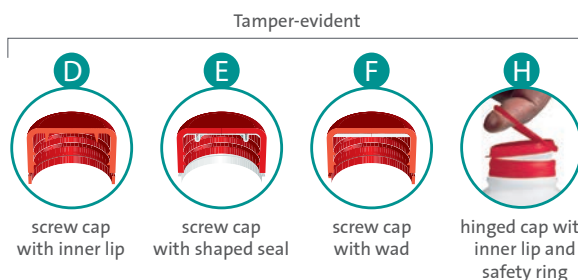
A: Height with cap
B: Width of bottle
C: Internal diameter of neck



Closure features



with wad



screw cap with inner lip

screw cap with shaped seal

screw cap with wad

hinged cap with inner lip and safety ring

Labels

Water Sampling Bottle
For Bacteriology use only

STERILE SAL10⁻³

Date: _____

Lieu de prélèvement:
(Sample point) _____

Type d'eau:
(Water type) _____

Raison:
(Reason) _____

Signature: _____

0 mg/L

128734901

- ▶ Prominent sterility level
- ▶ Clear label distinction
 - Green and Red labels for chlorinated water
 - Blue labels for natural non chlorinated water

SODIUM THIOSULFATE
DO NOT RINSE - NE PAS RINGER

STERILE SAL10⁻³

Date: _____ T°C: _____

Type d'échantillon:
(Sample type) _____

Type d'eau:
(Water type) _____

Raison:
(Reason) _____

Signature: _____

20 mg/L

128734901

- ▶ Designated area for essential information
- ▶ 128 EAN bar code for product traceability

SODIUM THIOSULFATE
DO NOT RINSE - NE PAS RINGER

STERILE SAL10⁻³

Date: _____ T°C: _____

Type d'échantillon:
(Sample type) _____

Type d'eau:
(Water type) _____

Raison:
(Reason) _____

Signature: _____

120 mg/L

128734901

Standards

Compliant with the following standards:

ISO
5667-3

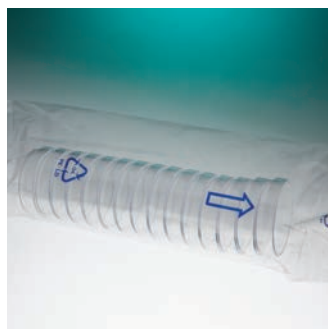
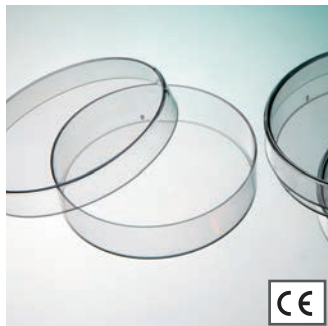
ISO 5667-3 Quality of water - Water sampling
Part 3: guidelines for preservation and handling for water sampling

ISO
19458

ISO 19458 Quality of water - Water sampling for microbiology analysis

Petri dishes

Diam. 55 mm - H 14.2 mm



Arrows printed on recyclable sleeve to indicate the opening way

Testing / Analysis

- ▶ 0/6 vents
- ▶ Crystal Polystyrene
- ▶ Optimal flatness
- ▶ Production class 100



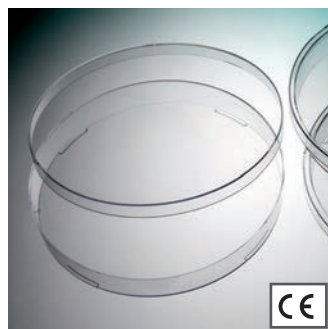
Petri dishes (diam. 55 mm H 14.2 mm)

Cat. No.	Vents	Units/sleeve	Sleeves	Outer bag	Qty/case	Sterile R SAL 10 ⁻⁶
BP50-01	0	15	108	1	1620	-
BP50-02	0	15	108	1	1620	✓
BP53-01	6	15	108	1	1620	-
BP53-02	6	15	108	1	1620	✓
BP53-03 *	6	15	108	2	1620	✓
BP53-06 *	6	15	108	2	1620	-

* Easy opening Sterile R SAL 10⁻⁶ Aseptic

Petri dishes

Diam. 140 mm - H 20.6 mm



Testing / Analysis

- ▶ 0/3 vents
- ▶ Crystal polystyrene
- ▶ Optimal flatness
- ▶ Production class 100



Petri dishes (diam. 140 mm H 20.6 mm)

Cat. No.	Vents	Units/sleeve	Sleeves	Outer bag	Qty/case	Sterile R SAL 10 ⁻⁶
BP140-01	0	11	16	2	176	-
BP140-02	0	11	16	2	176	✓
BP143-01	3	11	16	2	176	-
BP143-02	3	11	16	2	176	✓

Sterile R SAL 10⁻⁶ Aseptic

Inoculating loops

Spherical tip- 1 μ L



Spherical tip

Analysis



- ▶ Highly ergonomic
- ▶ Flexible Polystyrene
- ▶ Gentle on agar
- ▶ 1 μ L with spherical tip
- ▶ Packed in tamper-evident ZIP bags

Inoculating loops in PS

Cat. No.	Volume (μ L)	L (mm)	Color	Pcs/bag	Pcs/box	Qty/case	Sterile SAL 10 ⁻³
OS1B-01	1	195	White	20	150 x 3	9000	✓

Sterile R SAL 10⁻³

Inoculating loops

Spherical tip - 10 μ L



Spherical tip

- ▶ Highly ergonomic
- ▶ Flexible Polystyrene
- ▶ Gentle on agar
- ▶ 10 μ L with spherical tip
- ▶ Packed in tamper-evident ZIP bags

Inoculating loops in PS

Cat. No.	Volume (μ L)	L (mm)	Color	Pcs/bag	Pcs/box	Qty/case	Sterile SAL 10 ⁻³
OS10B-02	10	195	Blue	20	150 x 3	9000	✓

Sterile R SAL 10⁻³

Inoculating loops

Needle tip- 1 μ L



Needle extremity

Analysis



- ▶ Highly ergonomic
- ▶ Flexible Polystyrene
- ▶ Gentle on agar
- ▶ 1 μ L with needle tip
- ▶ Packed in tamper-evident ZIP bags

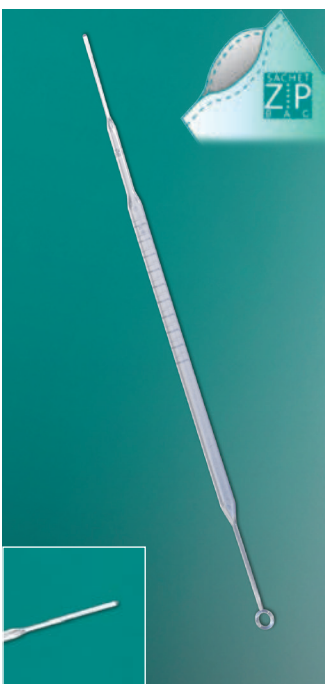
Inoculating loops in PS

Cat. No.	Volume (μ L)	L (mm)	Color	Pcs/bag	Pcs/box	Qty/case	Sterile SAL 10^{-3}
OS1-01	1	192	Crystal	20	150 x 3	9000	✓

Sterile R SAL 10^{-3}

Inoculating loops

Needle tip - 10 μ L



Needle tip

- ▶ Highly ergonomic
- ▶ Flexible Polystyrene
- ▶ Gentle on agar
- ▶ 10 μ L with needle tip
- ▶ Packed in tamper-evident ZIP bags

Inoculating loops in PS

Cat. No.	Volume (μ L)	L (mm)	Color	Pcs/bag	Pcs/box	Qty/case	Sterile SAL 10^{-3}
OS10-02	10	194	Crystal blue	20	150 x 3	9000	✓

Sterile R SAL 10^{-3}

Autoclave bags

3000 mL to > 33 000 mL



Disposal



- ▶ Thermal-resistant bags
- ▶ Bag thickness is 40 µm
- ▶ Wide range of volumes

Autoclave bags in PP

Cat. No.	Volume (mL)	H (mm)	L (mm)	Thermal resistance	Qty/case	Sterile
SA03-01	3000	400	255	134°C - 273.2°F	500	-
SA09-01	9000	500	300	134°C - 273.2°F	500	-
SA14-01	14000	600	400	134°C - 273.2°F	500	-
SA21-01	21000	780	400	134°C - 273.2°F	500	-
SA33-01	33000	780	600	134°C - 273.2°F	500	-

Sterile R SAL 10⁻³ Aseptic



Roll of 25 bags

Autoclave bags in HDPE

Cat. No.	Volume (mL)	H (mm)	L (mm)	Thermal resistance	Qty/case	Sterile
SA03-05	3000	400	255	121°C - 249.8°F	1000	-
SA09-05	9000	500	300	121°C - 249.8°F	750	-
SA14-03	14000	600	400	121°C - 249.8°F	450	-
SA21-05	21000	780	400	121°C - 249.8°F	400	-
SA33-03	33000	800	500	121°C - 249.8°F	500	-

Sterile R SAL 10⁻³ Aseptic

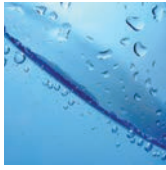


Biohazard sign on printed bags

Tip:

Do not seal bags tightly while autoclaving. As air expands when heated, tightly sealed bags may pop.

Water testing bottles benefits



+ Leak proof closure system

+ Large opening to avoid contamination



+ Tamper-evident screw-cap

+ Molded graduations

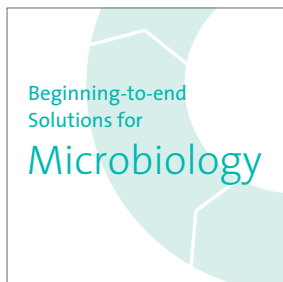


+ Label traceability

+ Pre-dosed with sodium thiosulphate $\text{Na}_2\text{S}_2\text{O}_3 \cdot 5\text{H}_2\text{O}$



+ Single bag to ensure sterility



www.corning.com/lifesciences/solutions

For premium quality and performance in quality testing labs, you can count on Corning. In our continuous efforts to improve efficiencies and develop new tools for microbiology applications, we have scientists working in Corning labs doing what you do every day, across the globe. From sampling and preparation to bacteria growth and analysis, our technical experts understand your challenges and the changing regulatory requirements that shape your day-to-day processes.

It is this expertise, plus a 160-year legacy of Corning innovation and manufacturing excellence, that puts us in a unique position to be able to offer high-quality, reliable microbiology consumables for quality testing labs. The recent introduction of our Gosselin™ brand line of consumables including Petri dishes, dippers and inoculating loops, has completed our portfolio, creating a beginning-to-end solution for quality testing labs across industry segments.

Gosselin™ brand products are optimized for Environmental Testing Laboratories. The line of quality testing consumables complies with international safety standards, and includes a range of features to ensure traceability. For full information on Gosselin products, please e-mail us at com-gosselin@corning.com, visit our website www.gosselin.eu or call +33 328-419-303 or contact your local Corning sales office listed below.

Gosselin SAS
123 Route de Caestre
Borre - CS 40019
59529 Hazebrouck Cedex
France
t +33 328-419-303
f +33 328-495-692
com-gosselin@corning.com
www.gosselin.eu

CORNING | **FALCON**® **AXYGEN**® **PYREX**® **GOSSSELIN**™

For a listing of trademarks, visit us at www.corning.com/lifesciences/trademarks.
Corning Incorporated, One Riverfront Plaza, Corning, NY 14831-0001