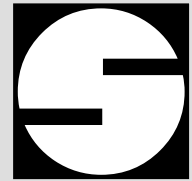


GS04 33
GS04 35

UP TO **30** L/MIN
AND **350** BAR

8.5 USGPM
5000 PSI

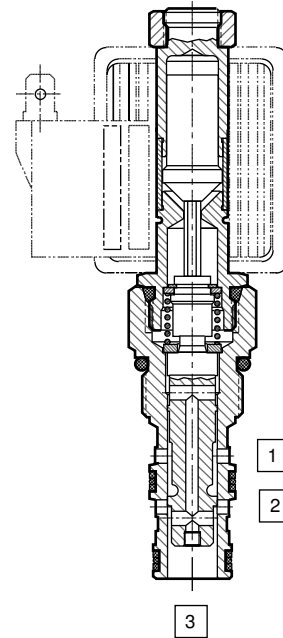


SOLENOID SPOOL VALVE

2/3 WAY SIDE CYLINDER PORT

■ THREE way on-off valve with side cylinder port designed as a normally closed or normally open valve to operate single acting cylinders, pilot circuits or circuits with a three position function (using two cartridges). This valve could also be used as a selector valve.

- High flow capacity with reduced space requirements.
- High pressure capability to 350 bar 5000 psi.
- One piece cartridge housing ensures internal concentricity.
- Waterproof coil hermetically sealed, requires no O-rings.
- Symmetrical coil can be reversed without affecting performance.
- Manual override available.



PATENT
#5,002,253

SPECIFICATIONS

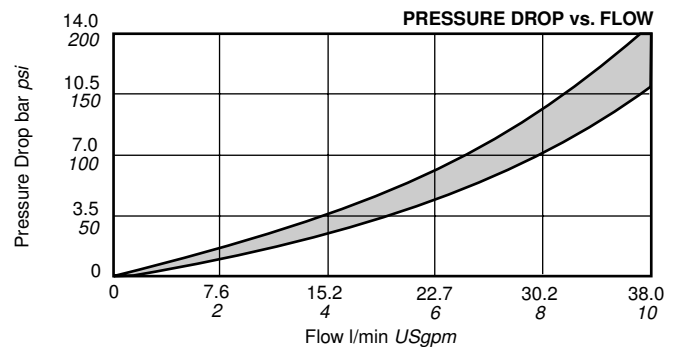
BASIC MODEL NUMBER	STANDARD GS04 33	HIGH FLOW GS04 33	HIGH PRESSURE GS04 35
SYMBOL			
NOMINAL FLOW AT dp = 5 bar 70 psi	24.5 l/min 6.5 USgpm	32 l/min 8.5 USgpm	26.5 l/min 7 USgpm
PRESSURE	210 bar 3000 psi		350 bar 5000 psi
FUNCTION	FREE FLOW 2@ 3 IN BOTH DIRECTIONS WHEN SOLENOID IS DE-ENERGIZED		
SERIES CA COIL WATTS. (100% DUTY CYCLE)	18w (‘S’ Coil)	28w (‘P’ Coil)	
MIN AMPERAGE TO OPERATE VALVE AT MAX RATED PRESSURE & FLOW	75% OF NOMINAL AMPERAGE, DETAILS: COIL DATA SHEET page 446		
PREFERABLE INPUT/OUTPUT PORT LOCATION	UNRESTRICTED		
INSTALLATION	UNRESTRICTED		
FLUID *	MINERAL OIL OR SYNTHETIC FLUID WITH LUBRICANT PROPERTIES		
IDEAL VISCOSITY *	15-50 cSt 80-230 SSU		
SEAL MATERIAL/ TEMPERATURE *	NITRILE (Std.) -30°C to +100°C BUNA-N -20°F to +210°F VITON -20°C to +150°C -4°F to +330°F		
FILTRATION *	25 MICRONS (Nom.) OR BETTER		
CART. WEIGHT	0.32 kg 0.71 lb		
COIL WEIGHT	0.29 kg 0.64 lb		

* IMPORTANT: See pages 4-5 for additional notes on operating conditions.

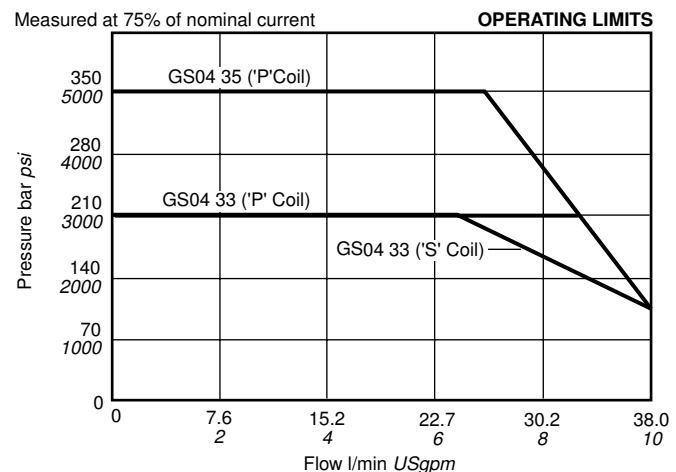
Specifications may change without notice

TYPICAL PERFORMANCE

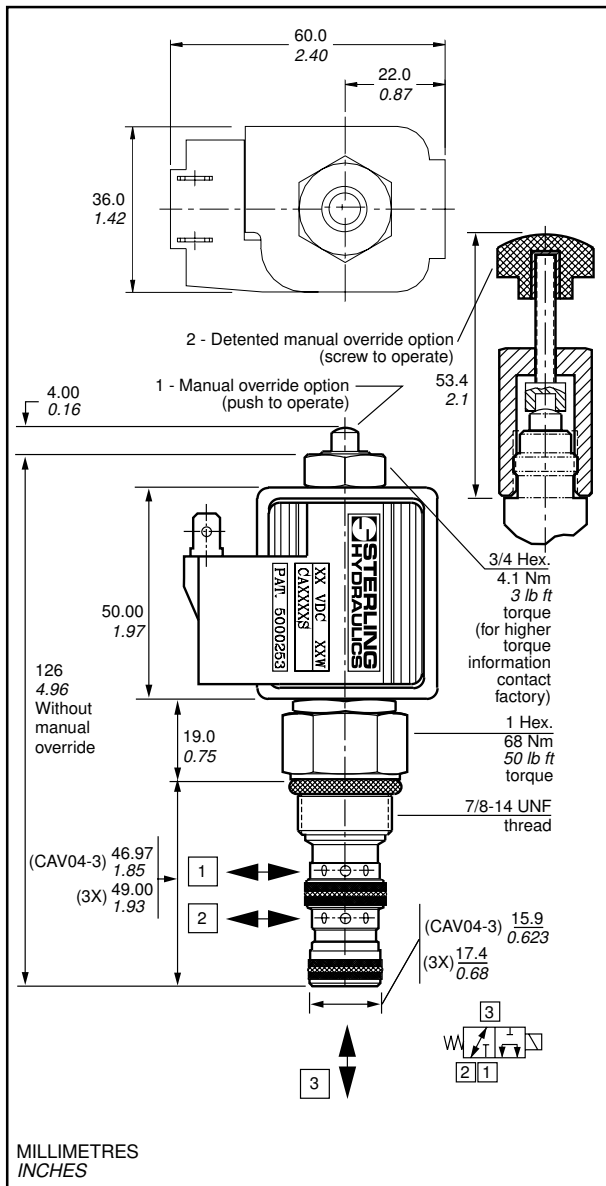
Measured at 30cSt 140 SSU (For cartridge only)



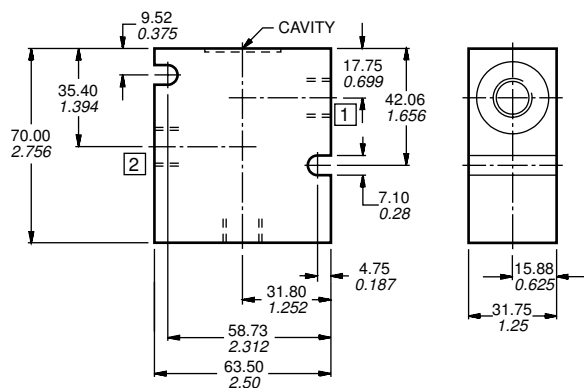
Measured at 75% of nominal current



DIMENSIONS



LINE BODY CAVITY CAV04-3: 7/8-14 Thread (10-3 Industry common cavity) CAVITY 3X: 7/8-14 Thread



CAVITY TOOLING FOR CAV04-3

	MM	INCH		
PILOT DRILL Ø	15	0.59	REAMER (STEEL)	8RM31069S
STEP DRILL	8DS31359		COUNTERBORE	—
REAMER (ALUM)	8RM31069A		TAP	8TP31201

MACHINING DETAILS page 499

CARTRIDGE GS04

PRESSURE AND PERFORMANCE FEATURES (Normally closed)	33	STANDARD ('S' Coil)
	33	HIGH FLOW ('P' Coil)
	35	HIGH PRESSURE ('P' Coil)
MANUAL OVERRIDE (Option)	0	NOT REQUIRED
	1	MANUAL OVERRIDE
	2	DETENTED M.O. Part no.900690
FILTER SCREEN (Option)	0	NOT AVAILABLE
SEAL MATERIAL	N	NITRILE <i>BUNA-N</i> (Std.)
	V	VITON
CAVITY	OMIT FOR 3X CAVITY	
	C	INDUSTRY COMMON CAVITY

COIL CA

COIL WATTAGE	S	STANDARD 18w
	P	PUISSANT 28w
COIL VOLTAGE *	012	12V DC
	024	24V DC
	115	115V AC
	230	230V AC
COIL TERMINAL *	S	DOUBLE SPADE (DC Only)
	L	DOUBLE LEAD (DC Only)
	D	DIN 43650 (AC or DC)
	C	DOUBLE LEAD WIRE WITH CONDUIT CONNECTOR (AC or DC)
	PF	DOUBLE LEAD WIRE WITH FEMALE PACKARD CONNECTOR (DC Only)
	PM	DOUBLE LEAD WIRE WITH MALE PACKARD CONNECTOR (DC Only)
	W	DOUBLE SCREW (DC only)
	Y	SINGLE SCREW (Internally grounded) (DC Only)
	WE	DOUBLE SCREW WITH 3 AMP DIODE (DC Only)
	AD	AMP JUNIOR WITH 3 AMP DIODE (CC Coils only) (DC Only)
LD	DOUBLE LEAD WITH DEUTSCH CONNECTOR (DC Only)	

* ADDITIONAL VOLTAGES AND OTHER TERMINALS ARE AVAILABLE, FOR DETAILS PLEASE CONSULT FACTORY

COIL DETAILS page 446

LINE BODY LB10

PORTING	7/8-14 (CAV 04-3)	7/8-14 (3X)			
	715	1/2 SAE	551	3/8 NPTF	
	716	3/8 BSP	553	1/2 SAE	554
LINE BODY MATERIAL	A	ALUMINIUM (Anodised)	TO 210 bar 3000 psi		
	S	STEEL (Zinc plated)	TO 420 bar 6000 psi		

LINE BODY DETAILS pages 470, 483

IF ASSEMBLY OF ABOVE PARTS IS REQUIRED - SPECIFY "ASSEMBLED"

SEAL KIT (CAV 04-3)	SK30505N-1 (NITRILE-BUNA N)
	SK30505V-1 (VITON)
SEAL KIT (3X CAVITY)	SK30081N-1 (NITRILE-BUNA N)
	SK30081V-1 (VITON)

STERLING HYDRAULICS

SOLENOID SPOOL 2/2

SOLENOID SPOOL 2/3

SOLENOID SPOOL 2/4

SOLENOID SPOOL 3/4

PROPORT'NL RELIEF

PROPORT'NL PRESS REG

PROPORT'NL FLOW REG

PROPORT'NL DIRECTIONAL

MANUAL VALVES

AIR OPER VALVES

LINE BODIES

CAVITIES

REPLAC'ET LIST