

MSc/Diploma/Certificate
Brain Injury Rehabilitation
Brain Injury Case Management



Brain injury rehabilitation is a rapidly developing field, requiring practitioners to keep up with advances in brain science, rehabilitation research and changes in legislation and policy. This new interdisciplinary course will equip students from a wide range of backgrounds with the specialist skills they need to work effectively in this challenging and rewarding profession.

Dr Andrew Worthington, Programme Leader

We are offering a range of Brain Injury qualifications that will appeal to a variety of people at different stages of their career.

Key features

- A unique interdisciplinary range of courses for all professionals concerned with advancing their understanding of brain injury and rehabilitation
- Combining the University's internationally renowned research in brain science with the latest evidence-based interventions
- Comprehensively covers clinical, social and legal aspects of rehabilitation
- An emphasis on experiential learning, with contributions to teaching from adults with brain injury, family members and leading practitioners

How are the programmes structured?

These programmes are intended to meet the nationally identified need for a better trained and more appropriately qualified workforce in the field of brain injury rehabilitation, both at a professional (postgraduate) level and in the development of a growing range of support workers, enablers and rehabilitation technicians.

The programmes integrate the latest research into brain injury with evidence-based rehabilitation, and address the increasingly challenging legal, social and ethical climate in which practitioners work.

Who are the programmes aimed at?

Brain Injury Rehabilitation

Graduate Certificate/Diploma

- College graduates (BTEC/NVQ/A-level) interested in later degree studies in health or social sciences.
- Experienced carers/support workers wanting to increase knowledge and improve skills in rehabilitation.

Postgraduate MSc/Diploma/Certificate

- Graduates with a first degree in a relevant subject such as Health Sciences, Psychology, Cognitive Science etc



- Professionally qualified clinicians (nurses, doctors, therapists, social workers, psychologists)
- Other professionals working in a related field, eg, lawyers, insurers

Brain Injury Case Management

MSc/Postgraduate Diploma

Professionals wishing to train as Brain Injury Case Managers such as

- Nurses
- Occupational therapists
- Social Workers
- Physiotherapists
- Speech and language therapists

Studying this programme provides a structured academic training for experienced clinicians who are working, or wish to work, as brain injury Case Managers. The content is intended to reflect competency standards being developed by the British Association of Brain Injury Case Managers.

Modules offered

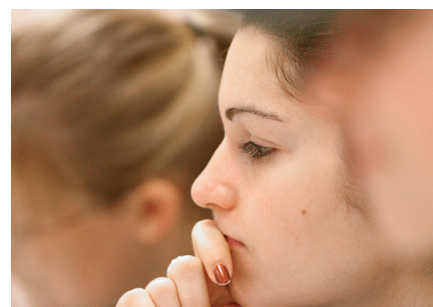
The Masters/Diploma course is taught over two years with three week-long teaching blocks (modules) per year. Masters students also complete a dissertation within this time-frame. Evaluation is undertaken predominantly by written assignments, usually two per module.

The first year constitutes the following modules

- Acquired brain injury in context
- Medical and physical aspects of brain injury
- Psychological and psychiatric consequences of brain injury

In the second year students take three from five modules depending on the award they are working towards:

- Methods and technologies in brain injury rehabilitation
- Models of service delivery
- Legal and ethical aspects of brain injury rehabilitation



- Partnership working
- Clinical case management

Entry Requirements

Brain Injury Rehabilitation

Graduate Certificate/Diploma

- Two A-levels at grade C or above or
- NVQ level III in a relevant subject or
- BTEC National Diploma in a relevant subject

Postgraduate Certificate/Diploma/MSc

- A good first degree (second class or above) in a relevant subject (such as health or social science, psychology or law).

Brain Injury Case Management

Masters level only available

- Professionals with at least 5 years post-qualification experience in the following disciplines: Nursing, Occupational therapy, Social Work, Physiotherapy, Speech and language therapy
- As well as at least 2 years full-time experience (or equivalent) of working with adults or children with acquired brain injury.

How to apply

Applications and further details can be obtained from: **PG Admissions**

Tel: +44 (0)121 414 4906

Email: braininjury@contacts.bham.ac.uk

We anticipate that these courses will attract a high level of interest, so places will be limited.

Fees and funding

For further information

www.postgraduate.bham.ac.uk/finance

Learn more

Interested candidates can also contact **Dr Andrew Worthington**, Programme Leader or **Professor Glyn Humphreys** for further information: braininjury@contacts.bham.ac.uk

www.psychology.bham.ac.uk