

Job Name: \_\_\_\_\_

System Reference: \_\_\_\_\_ Date: \_\_\_\_\_



Indoor Unit: PCA-A36KA6



Outdoor Unit: PUY-A36NHA6 (-BS)

### UNIT OPTION:

- Standard Model.....PUY-A36NHA6
- Seacoast (BS) Model.....PUY-A36NHA6-BS

### ACCESSORIES:

- Condensate Pump (BlueDiamond X87-711/721; 115/230V)
- Condensate Pump (Sauermann SI30-115/230; 115/230V)
- Wind Baffle (WB-PA2)
- Air Outlet Guide (PAC-SG59SG)
- Wireless Wall-mounted Remote Controller Kit (MHK1)\*\*
- Portable Central Controller (MCCH1)\*\*
- Outdoor Air Sensor (MOS1)\*\*
- Wired Wall-mounted Controller (PAR-31MAA)\*\*
- Simple MA Remote Controller (PAC-YT53CRAU)\*\*

\*\*See Submittal for information on each option.

### SPECIFICATIONS:

Rated Capacity*		
Cooling	Btu/h	35,000

\* Rating Conditions per AHRI Standard:  
 Cooling | Indoor: 80° F (27° C) DB / 67° F (19° C) WB  
 Cooling | Outdoor: 95° F (35° C) DB / 75° F (24° C) WB

Operating Range	
Cooling	-20° F** to 115° F (-29° C to 46° C) DB

\*\* The minimum temperature will be 23° F (-5° C) DB if optional wind baffle accessory is not installed.  
 For operation below -20° F (-29° C), please contact your Mitsubishi Electric representative.

Capacity Range		
Cooling	Btu/h	12,000 - 35,000

Rated Total Input		
Cooling	W	4,630

Electrical Power Requirements	208 / 230V, 1-Phase, 60 Hz	
-------------------------------	----------------------------	--

Minimum Circuit Ampacity (MCA)		
Indoor	A	2
Outdoor		25

External Finish	
Indoor	Munsell No. 6.4Y 8.9/0.4
Outdoor	Munsell No. 3Y 7.8 / 1.1

External Dimensions		
Indoor (H x W x D)	In.(mm)	9-1/16 x 63 x 26-3/4 (230 x 1,600 x 680)
Outdoor (H x W x D)		37-1/8 x 37-3/8 x 13 + 1-3/16 (943 x 950 x 330 + 30)

Net Weight		
Indoor	Lbs.(kg)	79 (36)
Outdoor		163 (74)

Sound Pressure Level			
Indoor (Low-M1-M2-Hi)		dB(A)	37-39-41-43
Outdoor	Cooling		48

Airflow Rate (Low-M1-M2-Hi)			
Indoor (Cooling)	DRY	CFM	775-850-920-990
	WET		705-775-850-920
Outdoor	DRY		1,940

Indoor Unit		
Blower Motor (ECM)	F.L.A.	0.97
Blower Motor Output	W	160
SHF		0.73
Moisture Removal	pt./h	8.5

Outdoor Unit		
Compressor		DC INVERTER-driven Twin Rotary
Fan Motor (ECM)	F.L.A.	0.75
MOCP	A	40

Refrigerant Piping		
Liquid (High Pressure)	In.(mm)	5/8 (15.88)
Gas (Low Pressure)		3/8 (9.52)
Maximum Total Refrigerant Pipe Length	Ft. (m)	225 (68)
Maximum Vertical Separation	Ft. (m)	100 (30)

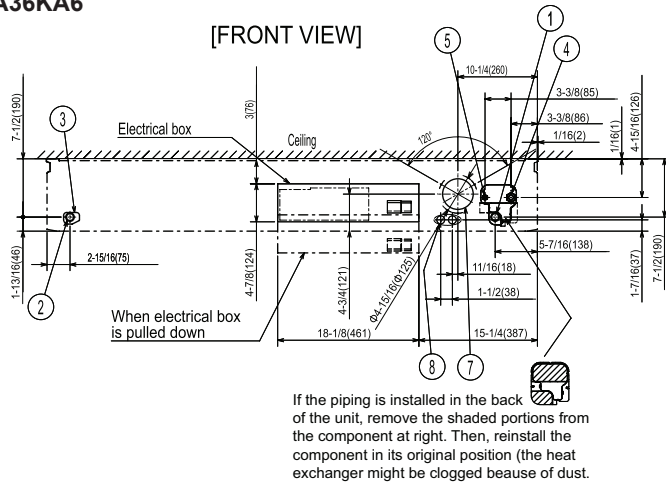
Refrigerant	R410A ; 6lbs., 10oz.
-------------	----------------------

Connection Method	Flared
-------------------	--------

AHRI Efficiency Ratings	
EER	7.6
SEER	14.4

# DIMENSIONS: PCA-A36KA6 & PUY-A36NHA6 (-BS)

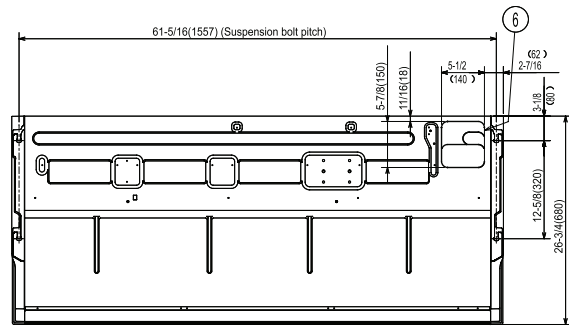
## PCA-A36KA6



### NOTES.

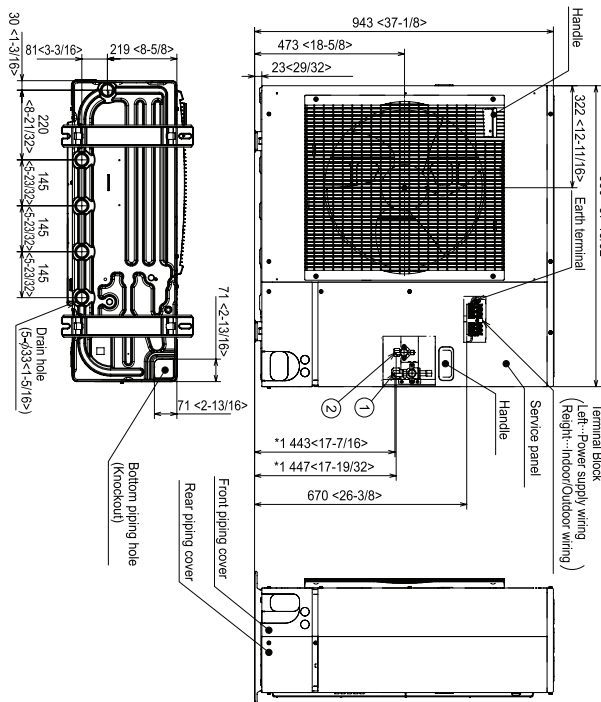
1. Use M10 or W3/8 screw for anchor bolt.
2. Please be sure when installing the drain lift up mechanism (option parts), refrigerant pipe will be only upward.

Unit: inch (mm)

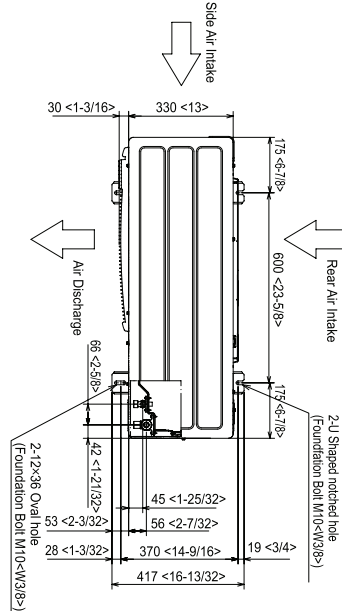


- ① Drainage pipe connection(1/26mm) D.)
  - ② Drainage pipe connection(for the left arrangement)
  - ③ Knockout hole for left drain-piping arrangement
  - ④ Refrigerant-pipe connection (gas pipe side/flared connection)
  - ⑤ Refrigerant-pipe connection (liquid pipe side/flared connection)
  - ⑥ Knockout hole for upper drain pipe arrangement
  - ⑦ Knockout hole for ventilation air intake Φ3-15/16(Φ100)
  - ⑧ Knockout hole for wiring arrangement Φ7/8(Φ22)
- Accessory...Drain socket (1/26mm) D.)

## PUY-A36NHA6 (-BS)



Unit: mm (inch)



### NOTES:

#### SEACOAST PROTECTION

- External Outer Panel: Phosphate coating + Acrylic-Enamel coating
- Fan Motor Support: Epoxy resin coating (at edge face)
- Separator Assembly ; Valve Bed: Epoxy resin coating (at edge face)
- Screws (used outer side): Zinc nickel coating 5µm + Polyvinylidene chloride coating

**“Blue Fin” treatment is an anti-corrosion treatment that is applied to the condenser coil to protect it against airborne contaminants..**



COOLING & HEATING

1340 Satellite Boulevard, Suwanee, GA 30024  
Toll Free: 800-433-4822 www.mehvac.com

