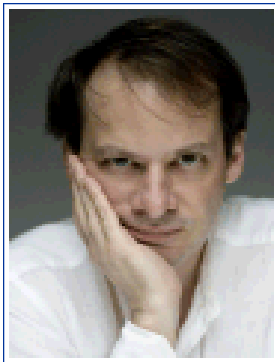


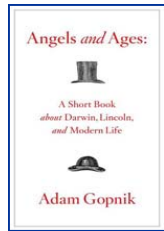
**SAVORING THE CLASSICAL
TRADITION IN DRAMA**

ENGAGING PRESENTATIONS BY
THE SHAKESPEARE GUILD
IN COLLABORATION WITH
THE NATIONAL ARTS CLUB
AND THE NEW YORK BRANCH OF
THE ENGLISH-SPEAKING UNION



ADAM GOPNIK ♦ Monday, September 14

We open our 2009-10 *SOS* series with a *New Yorker* favorite who is probably most familiar for *Paris to the Moon*, a best-selling account of the years he and his family spent in the City of Light. **ADAM GOPNIK** has also enchanted readers with *Through the Children's Gate*, a collection centered on what his kids experienced upon their return to Manhattan. He has graced several **GUILD** occasions, among them a Lincoln Center gala at which **Kevin Kline** received the 2002 **GIELGUD AWARD**. This time he'll share his bicentennial reflections on two historic figures who were born on the same day in February 1809. The volume's title is



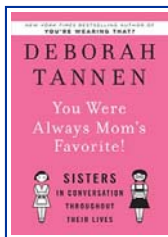
NATIONAL ARTS CLUB
15 Gramercy Park South
Manhattan
Program 8:00 p.m.
Members \$25 Others \$30

Angels and Ages: A Short Book About Darwin, Lincoln, and Modern Life, and the **GUILD**'s **John Andrews** will join Mr. Gopnik in a discussion of its Shakespearean echoes. Copies will be available at a discount, and the author will be delighted to inscribe them.

DEBORAH TANNEN ♦ Monday, October 19

Georgetown linguist **DEBORAH TANNEN** became a household name with *You Just Don't Understand*, a publication that held the number-one spot on the *New York Times* bestseller list for eight months.

NATIONAL ARTS CLUB
15 Gramercy Park South
Manhattan
Program 8:00 p.m.
Members \$25 Others \$30



We're also in her debt for *The Argument Culture*, *I Only Say This Because I Love You*, *Talking from 9 to 5*, and *You're Wearing THAT?* She'll introduce *You Were Always Mom's Favorite*, a new study that illuminates the relationships between sisters. Drawing on scenes from Shakespeare (among them exchanges between Kate and Bianca in *The Taming of the Shrew*) as well as from everyday life, this volume will be just



as engaging as previous contributions from one of today's most insightful and influential observers. Copies of the book will be on hand for purchase at a discount; and after a dialogue hosted by **John Andrews**, Dr. Tannen will be more than happy to sign them.

ROSEMARY HARRIS ♦ Monday, November 16



A stage and screen legend whose credits include four Drama Desk awards, an Emmy, a Golden Globe, an Obie, and a Tony, not to mention two Oscar nominations (the most recent of which put her in a competition that was won by her daughter Jennifer Ehle), **ROSEMARY HARRIS** has worked with such notables as John Gielgud, Tyrone Guthrie, Laurence Olivier, and Peter O'Toole. She's now starring in her second Broadway revival of *The Royal Family*, a classic comedy by George S. Kaufman and Edna Ferber, and she'll soon be appearing in her fourth popular *Spider-Man* movie. Her many Shakespearean roles include Cressida, Ophelia,



NATIONAL ARTS CLUB
15 Gramercy Park South
Manhattan
Program 8:00 p.m.
Members \$25 Others \$30

and Portia, and she has been featured in such films as *Beau Brummell*, *Before the Devil Knows You're Dead*, *Being Julia*, *Crossing Delancy*, *Death of a Salesman*, *Hamlet*, *Looking for Richard*, and *Tom and Viv*. We hope you'll join us for a memorable evening.



Join the Guild, and Greet the Stars EVENTS IN LONDON, NEW YORK, AND WASHINGTON

If you attended *A SHAKESPEAREAN REVEL AT LINCOLN CENTER* in 2002, you relished such personalities as actors **JOHN CLEESE**, **KITTY CARLISLE HART**, **DANA IVEY**, and **TONY RANDALL**, writer **ADAM GOPNIK**, and directors **BERNARD GERSTEN** and **MARGOT HARLEY** in a toast to **KEVIN KLINE** as that year's recipient of the *GIELGUD AWARD FOR EXCELLENCE IN THE DRAMATIC ARTS*. It



was a joyous occasion, but like its 2003 sequel with **LYNN REDGRAVE** as laureate and her brother **CORIN** and her sister **VANESSA** as presenters at the **NATIONAL ARTS CLUB**, it was also substantive, with remarks not only about the honoree's achievements but about the heritage they illustrate. In this respect it echoed a 1999 gala at Broadway's **BARRYMORE**



THEATRE, where **ZOE CALDWELL**, who'd won a 1998 *GIELGUD* at the **FOLGER SHAKESPEARE LIBRARY**, led a cavalcade of notables – actors **KEITH BAXTER**, **BRIAN BEDFORD**, **HAL HOLBROOK**, **RONALD PICKUP**, **CHRISTOPHER PLUMMER**, and **TOBY STEPHENS**, dramatist **SIR DAVID HARE**, director **SIR RICHARD EYRE**, *Masterpiece Theatre* producer **REBECCA EATON**, and news host **ROBERT MACNEIL** – in a tribute to **DAME JUDI DENCH**. A few months later **DAME JUDI** and another *GIELGUD* honoree, **SIR DEREK JACOBI**, were among the hosts for a 2000 presentation to performer, director, and filmmaker **KENNETH BRANAGH** in London's historic **MIDDLE TEMPLE HALL**. This Bardic *SALUTE TO "THE MAN*

OF THE MILLENNIUM" featured vignettes by U.S. Ambassador **PHILIP LADER**, composer **PATRICK DOYLE**, and actors **SAMANTHA BOND**, **RICHARD BRIERS**, **HELENA BONHAM CARTER**, **RICHARD CLIFFORD**, **BEN ELTON**, **STEPHEN FRY**, **BOB HOSKINS**, **GERALDINE McEWAN**, and **TIMOTHY SPALL**.

On April 19, 2004, in the London theatre that had been renamed for Sir John in 1994, a few months after the **SHAKESPEARE GUILD** unveiled a gleaming **JOHN SAFER** trophy to perpetuate a gifted actor's legacy "with golden quill" (Sonnet 85), the **GUILD** combined forces with the **ROYAL SHAKESPEARE COMPANY** and the **ROYAL ACADEMY OF DRAMATIC ART** to celebrate the centenary of Sir John's birth. During an evening hosted by the **BBC's NED SHERRIN**, playwrights **ALAN BENNETT** and **SIR DAVID HARE**, director **SIR PETER HALL**, and actors **DAME JUDI DENCH**, **CLIVE FRANCIS**, **ROSEMARY HARRIS**, **MARTIN JARVIS**, **BARBARA JEFFORD**, **BARBARA LEIGH-HUNT**, **SIR IAN MCKELLEN**, **MICHAEL PENNINGTON**, **IAN RICHARDSON**, **PAUL SCOFIELD**, and **SIR DONALD SINDEN** commended their late-departed friend. On June 12, 2006, the **GUILD** returned to the **NATIONAL ARTS CLUB** for a Manhattan salute to **CHRISTOPHER PLUMMER**, who was toasted by **JULIE ANDREWS**, **ZOE CALDWELL**, **CLIVE FRANCIS**, **NAC President ALDON JAMES**, **ROBERT MACNEIL**, **AUDRA McDONALD**, and **LYNN REDGRAVE**. A few months later, on May 21, 2007, the **GUILD** joined the **ENGLISH-SPEAKING UNION** at Washington's **BRITISH EMBASSY** for a reception at which **SIR DAVID AND LADY MANNING**, **JUSTICE RUTH BADER GINSBURG**, performers **HELEN CAREY** and **TED VAN GRIETHUYSEN**, and other leaders feted **MICHAEL KAHN**, artistic director of the **SHAKESPEARE THEATRE COMPANY**, for his contributions to the cultural life of the Nation's Capital. On March 10, 2008, Sir David's successor, **SIR NIGEL SHEINWALD**, joined actors **F. MURRAY ABRAHAM**, **KATE FLEETWOOD**, **WHOOPI GOLDBERG**, **JOEL GREY**, and **DANIEL STEWART**, pianist **EMANUEL AX**, director **DAVID JONES**, producer **ROBERT HALMI JR.**, and other admirers in a *GIELGUD* salute to **PATRICK STEWART**.

In recent years, through events in locales such as the **NATIONAL PRESS CLUB** in D.C., the **CHICAGO SHAKESPEARE THEATER** in Illinois, and the **ALGONQUIN HOTEL** in New York, **GUILD** attendees have chatted with actors **JANE ALEXANDER**, **SIMON RUSSELL BEALE**, **HENRY GOODMAN**, **BILL IRWIN**, **MICHAEL LEARNED**, **ROGER REES**, **PRUNELLA SCALES**, **JANET SUZMAN**, **TIMOTHY WEST**, and **MICHAEL YORK**, directors **PETER BROOK** and **ROBERT WHITEHEAD**, media leaders **COKIE ROBERTS**, **SUSAN STAMBERG**, and **LINDA WERTHEIMER**, and writers **EDWARD ALBEE**, **E. R. BRAITHWAITE**, **SIR HAROLD EVANS**, **FLORA FRASER**, **MICHAEL FRAYN**, **STEPHEN GREENBLATT**, **ANTHONY HECHT**, **KEN LUDWIG**, **JUDITH MARTIN**, **PETER SHAFFER**, **JAMES SHAPIRO**, **JESSEE SHEIDLLOWER**, **DEBORAH TANNEN**, and **GARRY WILLS**. **GUILD** constituents enjoy member prices at all *SPEAKING* engagements. In addition, those who affiliate as **SUBSCRIBERS** receive 15% discounts on tickets for our annual *GIELGUD* gala. **CONTRIBUTORS** enjoy 20% discounts, **DONORS** 25%, and **BENEFACTORS** 30%. **PATRONS** receive 4 prime tickets free, and 35% reductions on further tickets. **SUSTAINERS** receive 10 prime tickets free and 40% discounts on further tickets. Any payments not offset by benefits claimed are fully tax-deductible.

I wish _ to make a tax-deductible donation, or _ to enroll as a **GUILD** member in the _ **SUBSCRIBER** (\$50), _ **CONTRIBUTOR** (\$125), _ **DONOR** (\$250), _ **BENEFACTOR** (\$500), _ **PATRON** (\$1,000), _ **SUSTAINER** (\$2,500) category. Please reserve _ space(s) at \$25, _ space(s) at \$30, for Sept. 14, _ space(s) at \$25, _ space(s) at \$30, for Oct.19, _ space(s) at \$25, _ space(s) at \$30, for Nov. 16. Enclosed is a check for \$ _____. Please charge \$ _____ to my _**AMERICAN EXPRESS** _**MASTERCARD** _**VISA** account _____ (____/____).

Name _____
Address _____
City, State, Zip _____
Phone, E-Mail _____

The information requested in this order form can be submitted by phone, fax, or e-mail if you'd prefer. GUILD contact details appear to the right.



*Presenter of the GIELGUD AWARD FOR EXCELLENCE IN THE DRAMATIC ARTS
Established in 1994 to Honor Sir John and to Perpetuate his Legacy*

**5B CALLE SAN MARTIN
SANTA FE, NM 87506-7536
Phone (505) 988-9560
Fax (505) 983-0806**

JOHN F. ANDREWS OBE, President

www.shakesguild.org
shakesguild@msn.com

Founded in 1987 and operational since 1994, The Shakespeare Guild is a global nonprofit corporation that celebrates, and endeavors to cultivate larger and more appreciative audiences for, the dramatist who has been applauded in one society after another as our most reliable guide to the mileposts of life.