

BOSCHApril 2001
INDUSTRIAL**10" TABLE SAW****Model 0601476139****4000***Open for Tool Illustration*

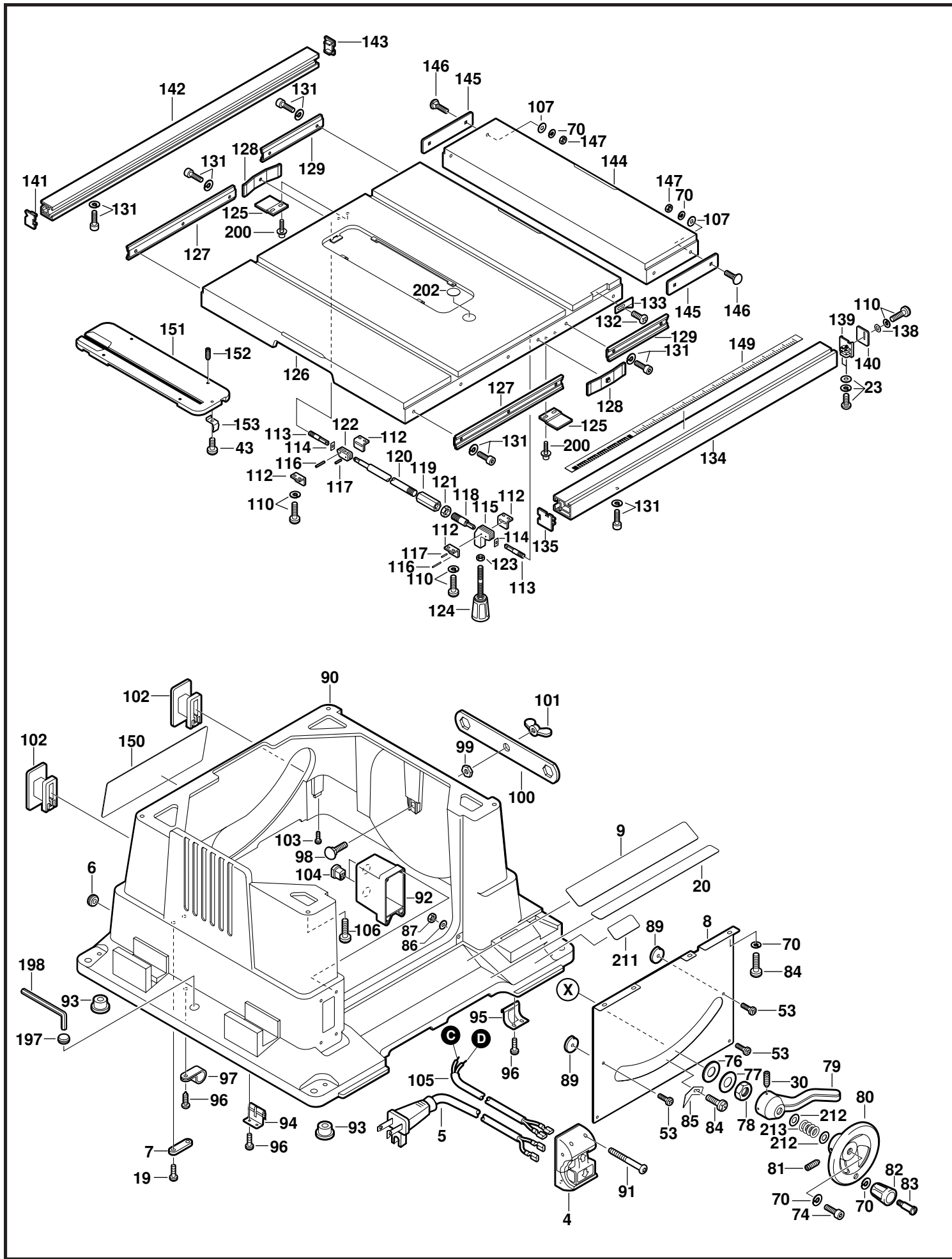
Pos.	Part Number	Description {Qty}	F/C	Pos.	Part Number	Description {Qty}	F/C
1	2 610 996 864	Motor Housing	71	57	2 610 997 276	Retaining Ring	89
2	2 610 996 867	Field 120V	22	58	2 610 996 895	Threaded Rod	80
3	2 610 996 866	Armature 120V	AW	59	2 610 998 573	Retaining Ring	89
4	2 610 996 892	Switch On/Off	15	60	2 610 997 221	Bushing	82
5	2 610 996 945	Cord 120V	11	61	2 610 996 896	Gear {2}	33
6	2 610 358 840	Strain Relief	11	62	2 610 912 587	Washer	65
7	2 610 358 842	Cord Clamp	89	63	2 610 998 588	Screw	89
8	2 610 997 805	Front Panel	9	64	2 610 358 149	Nut {2}	89
9	2 610 997 806	Label	9	65	2 610 910 796	Roll Pin {2}	66
12	2 610 997 306	Control Board	9	66	2 610 997 277	Retaining Ring	89
13	2 610 911 928	Ball Bearing	60	67	2 610 997 212	Bracket	54
14	2 610 911 927	Ball Bearing	61	68	2 610 997 222	Bushing	82
16	2 610 911 858	Brush Holder {2}	25	69	2 615 297 323	Screw {2}	89
19	2 610 358 844	Screw {2}	89	70	2 610 355 325	Lock Washer {14}	89
20	2 610 997 809	Label "Warning"	9	71	2 610 996 897	Shaft	54
22	2 610 996 865	Rear Motor Cover	70	72	2 610 996 933	Threaded Bushing	82
23	2 610 998 571	Screw {5}	89	73	2 610 996 938	Bevel Housing	73
24	2 610 911 859	Brush Cap {2}	25	74	2 615 303 023	Bolt {5}	57
25	2 610 327 868	Nut {2}	89	75	2 610 997 271	Spring	80
26	2 610 911 569	Nut Housing {2}	9	76	2 610 998 550	Washer	65
27	2 610 911 929	Hex Bolt {2}	89	77	2 610 997 299	Washer	65
28	2 610 996 948	Rubber Bearing Sleeve	82	78	2 610 997 298	Nut	89
29	2 610 911 566	Retainer Plate	65	79	2 610 996 898	Lock Handle	80
30	2 610 355 295	Screw {4}	89	80	2 610 996 899	Adjustment Wheel	63
31	2 610 996 863	Gear Housing	72	81	2 610 911 914	Set Screw	89
32	2 610 911 926	Screw {2}	89	82	2 610 996 925	Knob	63
33	2 610 911 924	Washer	65	83	2 610 997 270	Shoulder Screw	89
34	2 610 996 949	Ball Bearing	56	84	2 610 355 278	Screw {5}	89
35	2 610 997 281	Retaining Ring	89	85	2 610 996 927	Bevel Pointer	9
36	2 610 997 208	Spindle Gear	32	86	2 610 355 570	Washer {2}	65
37	2 610 996 869	Gear Housing Cover	70	87	2 610 356 706	Nut {2}	89
38	2 610 997 282	Retaining Ring	89	89	2 610 996 929	Stop Plate {2}	65
39	2 610 997 210	Ball Bearing	56	90	2 610 996 859	Base	88
40	2 610 997 211	Shaft	54	91	2 610 997 294	Screw {4}	89
41	2 610 993 102	Key	89	92	2 610 996 924	Switch Cover	9
42	2 610 996 932	Bearing Sleeve	82	93	2 610 358 846	Rubber Foot {4}	9
43	2 610 355 293	Screw {4}	89	94	2 610 996 930	Retaining Clip {2}	89
44	2 610 998 572	Screw {4}	89	95	2 610 996 931	Retaining Clip	89
45	2 610 996 875	Spring	27	96	2 610 910 047	Screw {8}	89
46	2 610 996 874	Lock Lever	64	97	2 610 990 504	Cord Clamp {2}	89
47	2 610 996 876	Shoulder Screw	89	98	2 610 997 273	Carriage Bolt	89
48	2 610 996 870	Inner Washer	65	99	2 610 997 246	Nut	89
49	2 610 996 871	Outer Washer	65	100	2 610 996 880	Wrench	9
50	2 610 358 858	Arbor Nut	89	101	2 610 997 247	Wing Nut	89
51	2 610 996 879	Wing Screw	89	102	2 610 996 922	Holder {2}	9
52	2 610 996 878	Cover Plate	9	103	2 610 998 574	Screw {2}	89
53	2 610 910 784	Screw {9}	89	104	2 610 998 567	Strain Relief {3}	11
54	2 610 996 877	Cover	70	105	2 610 998 568	Jumper Cord	11
55	2 610 996 861	Undercarriage	65	106	2 610 997 297	Screw {4}	89
56	2 610 996 862	Rod {2}	43	107	2 610 910 013	Washer {4}	65

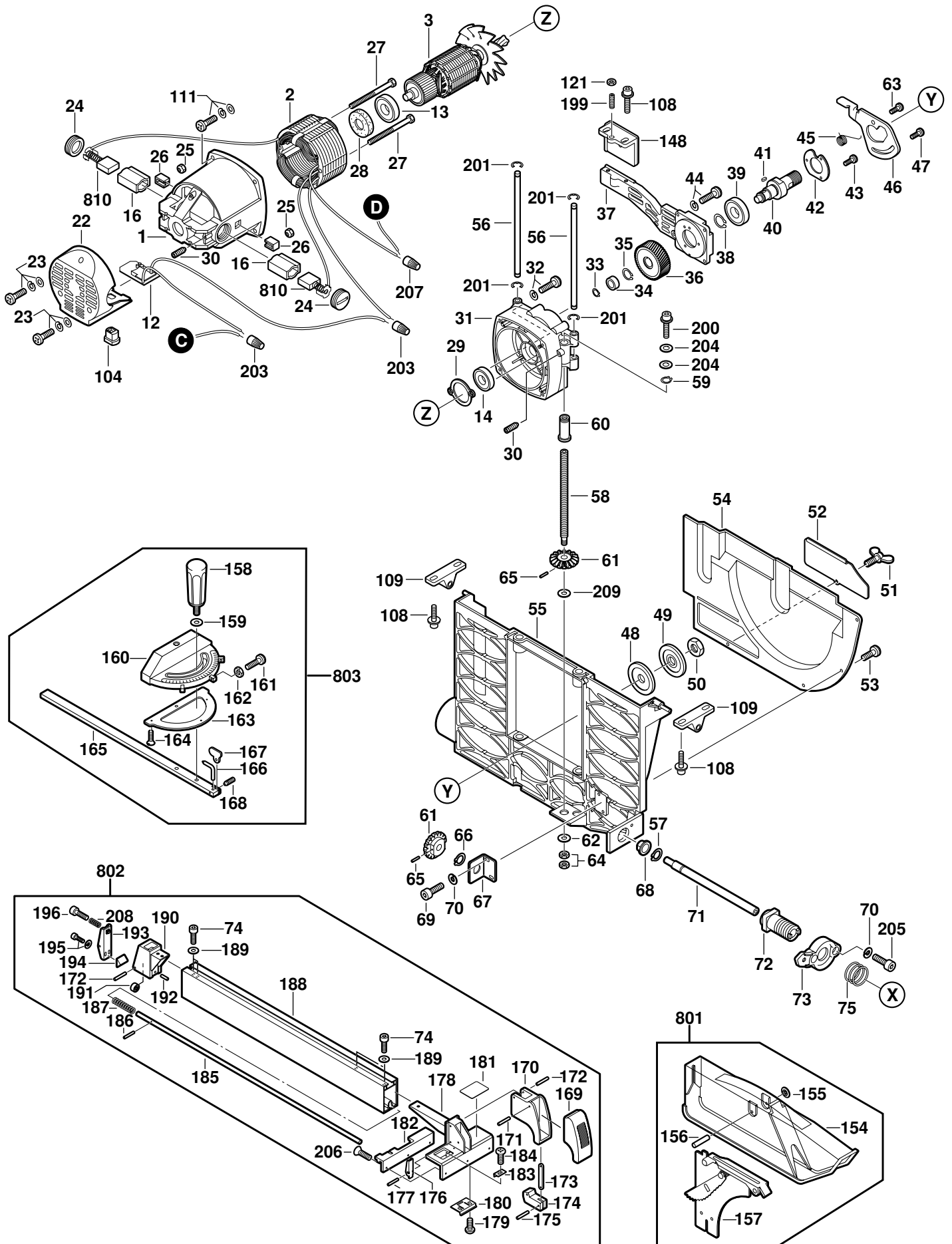
+ = Not Illustrated * = As Required F/C = Failure Code AW = Refer to AW Labor Time Chart

Pos.	Part Number	Description {Qty}	F/C	Pos.	Part Number	Description {Qty}	F/C
108	2 610 998 575	Screw {6}	89	164	2 610 358 832	Screw {3}	89
109	2 610 996 894	Bracket {2}	54	165	2 610 996 937	Guide Bar	9
110	2 610 908 271	Screw {9}	89	166	2 610 997 214	Pointer	9
111	2 610 998 587	Screw {4}	89	167	2 610 997 215	Stop Plate	9
112	2 610 996 921	Bracket {4}	54	168	2 615 296 243	Screw	89
113	2 610 996 913	Plunger {2}	52	169	2 610 998 558	Soft Grip Cover	9
114	2 610 996 917	Wear Plate {2}	9	170	2 610 997 248	Handle Housing	74
115	2 610 996 914	Front Cam	54	171	2 610 997 290	Roll Pin	66
116	2 610 997 275	Roll Pin {2}	66	172	2 610 997 291	Roll Pin {2}	66
117	2 610 997 274	Roll Pin {2}	66	173	2 610 996 890	Link	57
118	2 610 996 918	Front Rod	54	174	2 610 996 889	Front Cam	80
119	2 610 996 920	Coupler	57	175	2 610 997 289	Roll Pin	66
120	2 610 996 919	Rear Rod	54	176	2 610 996 893	Clamp Plate	80
121	2 610 911 896	Nut {2}	89	177	2 610 997 288	Roll Pin {2}	66
122	2 610 996 915	Rear Cam	54	178	2 610 996 881	Rip Fence Housing	9
123	2 610 355 272	Nut	89	179	2 610 997 249	Shoulder Screw {2}	89
124	2 610 996 916	Lock Lever	64	180	2 610 997 223	Clamp Plate	80
125	2 610 997 217	Stop Plate {2}	9	181	2 610 997 810	Label "Warning"	9
126	2 610 996 857	Table	9	182	2 610 996 891	Slide Pad	88
127	2 610 996 855	Rail Support {2}	43	183	2 610 998 570	Pointer Assembly	9
128	2 610 996 912	Lock Plate {2}	80	184	2 610 358 892	Screw	89
129	2 610 996 856	Rail Plate {2}	43	185	2 610 996 887	Rod	57
131	2 615 303 029	Bolt {12}	89	186	2 610 911 577	Roll Pin	66
132	2 610 320 339	Screw	89	187	2 610 996 888	Spring	27
133	2 610 996 941	Scale Pointer	9	188	2 610 996 883	Rip Fence Body	43
134	2 610 996 853	Front Rail	43	189	2 610 358 802	Washer {4}	65
135	2 610 996 923	End Cap	9	190	2 610 996 884	Rear Housing	80
138	2 610 908 270	Washer	65	191	2 610 996 886	Roller	87
139	2 610 997 244	End Cap	9	192	2 610 997 292	Roll Pin	66
140	2 610 996 926	Stop Plate	9	193	2 610 996 885	Clamp Plate	80
141	2 610 997 218	End Cap	9	194	2 610 997 240	Clamp Block	80
142	2 610 996 854	Rear Rail	43	195	2 610 997 293	Screw {2}	89
143	2 610 997 216	End Cap	9	196	2 610 997 245	Adjustment Screw	89
144	2 610 996 858	Extension Table	9	197	2 610 911 920	Rubber Bushing	9
145	2 610 996 928	Retaining Plate {2}	65	198	2 610 998 551	Allen Wrench	9
146	2 610 352 107	Carriage Bolt {4}	89	199	2 610 998 580	Set Screw	9
147	2 610 304 772	Nut {4}	89	200	2 610 328 617	Screw {5}	89
148	2 610 998 577	Blade Guard Mtg. Assy.	9	201	2 610 992 380	Retaining Ring {4}	89
149	2 610 997 808	Scale	9	202	2 610 997 817	Label "Line of cut"	9
150	2 610 997 807	Rar Label	9	203	2 610 358 932	Wire Nut {2}	9
151	2 610 997 227	Table Insert	92	204	2 615 303 020	Washer {2}	65
152	2 610 997 283	Set Screw {4}	89	205	2 615 303 026	Screw {2}	89
153	2 610 996 911	Clip	89	206	2 610 967 422	Screw {3}	89
154	2 610 996 900	Guard	92	207	2 610 911 933	Wire Nut	9
155	2 610 997 285	Push Nut {2}	89	208	2 610 998 593	Spring	80
156	2 610 996 902	Roll Pin	66	209	2 610 912 588	Washer	65
157	2 610 998 578	Anti-Kick Back Assembly	92	211	2 610 912 589	Label	9
158	2 610 998 579	Knob	63	212	2 610 341 465	Washer {2}	65
159	2 610 909 178	Washer	65	213	2 610 913 192	Spring	27
160	2 610 996 936	Housing	9	801	2 610 997 205	Blade Guard Assembly	92
161	2 610 358 519	Screw {3}	89	802	2 610 997 206	Rip Fence Assembly	87
162	2 610 908 272	Nut {3}	89	803	2 610 997 204	Miter Guage Assembly	87
163	2 610 997 213	Pad	88	810	2 610 997 207	Brush Set	26

Service Notes:

See technical bulletin for attachments, accessories, and related service parts.





To: All Authorized and Factory Service Centers,
Field Sales and Internal Support Personnel

Re: Difficult blade height adjustment for model 4000 (060 1476 139)

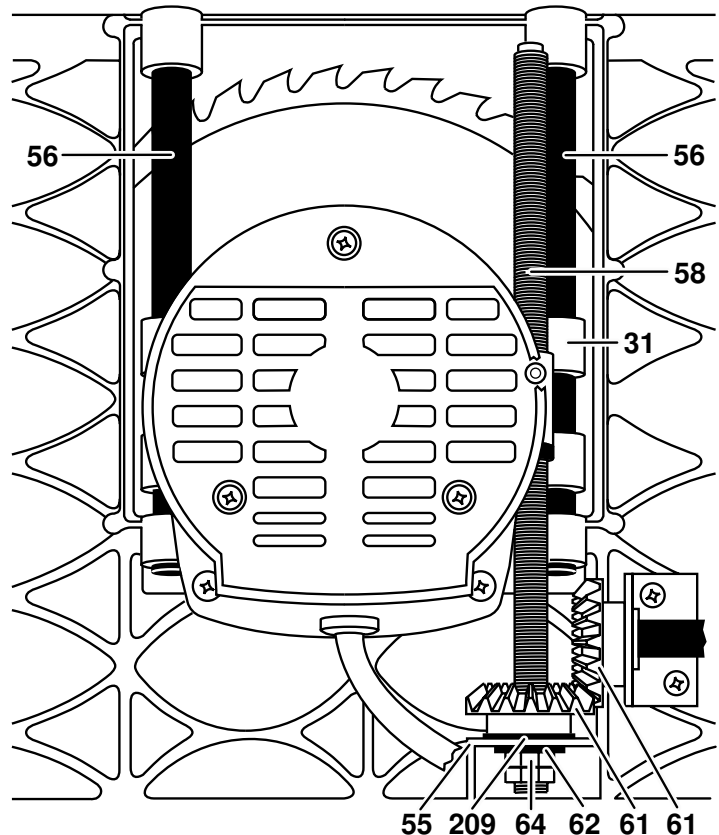
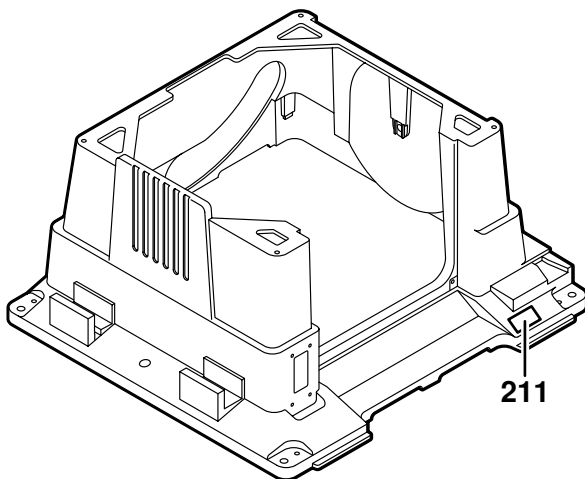
Please insert this bulletin into the "Technical Bulletins" section of your Bosch Parts Manual after making any additions or notes to your Illustrated Parts List(s).

The following modifications and adjustments should be checked/performed on **all** model 4000 Saws received for repair.

- Remove debris (sawdust, wood sap etc.) from all parts underneath the saw to allow smooth movement of the gear housing (31) along the guide rods (56) and threaded rod (58).
- One 0.5mm thick washer (209) should be between the undercarriage (55) and the gear (61). Apply a small amount of general purpose grease to the bottom of the gear (61) where it contacts the washer (209).
- At least one 3mm thick washer (62) should be between the undercarriage (55) and the nuts (64). Additional washers (various thickness) are acceptable as long as both nuts (64) fully engage the threaded rod (58).
- Approximately 0.5mm/.020in clearance should be between the washer (209) and the undercarriage (55). This clearance is critical in order to allow smooth movement of the motor. This adjustment is made by tightening/loosening nut (64) and then locking it in place with the second nut (64).
- Liberally apply general purpose grease to all surfaces of the gears (61), guide rods (56), and threaded rod (58).
- "Clean and Lube" label (211) should be affixed to the base as shown.

New Parts:

Washer 3mm (62) 2610 912 587
Washer 0.5mm (209) 2610 912 588
Label (211) 2610 912 589



All questions should be directed to your Authorized Service Manager.

Product Service Department

To: All Authorized and Factory Service Centers,
Field Sales and Internal Support Personnel

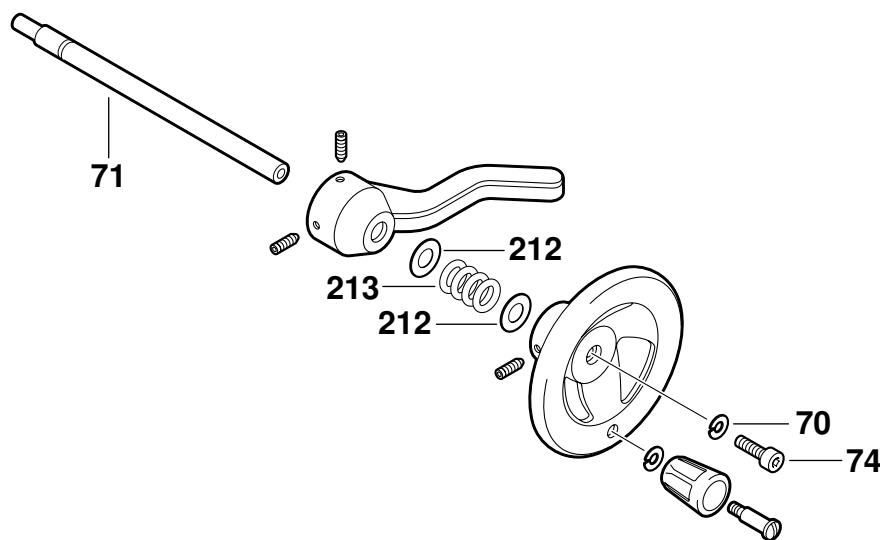
Re: Blade height moves while cutting on model 4000 (060 1476 139)

Please insert this bulletin into the "Technical Bulletins" section of your Bosch Parts Manual after making any additions or notes to your Illustrated Parts List(s).

Please note the new design and parts for the blade adjustment mechanism as shown below. This newer design will prevent unwanted blade height movement during cutting (most critical in Dado and Rabbet cuts). It is not necessary to retrofit older machines with these new parts unless undesirable blade movement is specified by the user.

New Parts: Position 70, Part Number 2610 355 325, Lock Washer
Position 74, Part Number 2615 303 023, Bolt
Position 212, Part Number 2610 341 465, Washer
Position 213, Part Number 2610 913 192, Spring

Position 71, Part Number 2610 996 897, Shaft, must be replaced when retrofitting older tools with the new spring and washers as shown. The newer shaft (same part number) is longer and threaded to accept the new bolt (74).



All questions should be directed to your Authorized Service Manager.

Product Service Department