

Royal Society for the Prevention of Cruelty to Animals



Bristol and District Branch
Registered charity number 205858

Bristol & District Branch

Annual Report 2010





*A simple way to
make a Difference*



From just £3 per month you can help provide vital veterinary care that could help save an animal's life.

The RSPCA Bristol Clinic treat 12,000 ill and injured animals every year. Your donation will help us to provide future generations of sick and injured animals with the veterinary treatment that could be the difference between life and death.

As a member of Healthy Paws & Claws and to thank you for your support, you will receive an RSPCA car sticker, our 'Bristol Animal News' biannual newsletter and a small gift.



Bristol and District Branch
Registered charity number 205858

For more details, please contact us on:

fundraising@rspca-bristol.org.uk
or call 0117 3003968

RSPCA Bristol and District Branch Office,
48 Albert Road, St Philips, Bristol, BS2 0XA

www.rspca-bristoldogsandcatshome.org.uk

Registered Charity Number 205858

Mission Statement

The Bristol & District Branch of the RSPCA is committed to preventing cruelty and promoting kindness to animals. We aim to reduce animal suffering and increase animal well-being as much as possible through our activities.

We are one of the most active RSPCA Branches in the country, helping many thousands of animals every year. Like all Branches, we are an independent charity that receives no financial support from the National RSPCA, Government or Lottery and therefore rely entirely on local support to fund our work.

Our Bristol Dogs and Cats Home provides shelter and a rehoming service for stray, abandoned and unwanted companion animals. As well as dogs and cats, the Home rescues rabbits, ferrets, and all other small domestic mammals & birds - we work tirelessly to give these animals the new life they deserve in a caring home, free from pain and neglect.

Our RSPCA Clinic provides vital and often life-saving veterinary treatment for straying, neglected, abused and rescued animals, 24 hours a day, 365 days a year. We also provide subsidised veterinary treatment for pets whose owners are on a low income and a first aid centre for wildlife casualties.

Education – informing people about animal welfare is fundamental to our aims. We constantly endeavour to increase public understanding and awareness of responsible pet ownership and other welfare issues. In particular, we promote neutering as the cornerstone to reducing the problem of unwanted pets.

Supporting the work of the National RSPCA – we work closely with our local RSPCA Inspectors to rescue and rehabilitate animals that have suffered cruelty or neglect, and we support a wide range of National RSPCA campaigns that aim to reduce the harmful impact of human activities on animals.

Patrons

The Right Hon. The Lord Mayor of Bristol
The Right Rev. The Bishop of Bristol

Honorary Chairman

J P Parker Esq

Trustees

P Bull	P Carey (Joined June 2010)
S Millar	L Slocombe
J Bonner	S Robinson (Nee Caradine)
M Saywell	S Lomax
H Walsh	G Butcher (Resigned April 2010)

Branch Office

48 Albert Road
St Philips
Bristol BS2 0XA
0117 9714197

RSPCA Veterinary Clinic

0117 9724567

Bristol Dogs Home

0117 9776043

Auditors

Bishop Fleming, 16 Queens Square Bristol, BS1 4NT

Bankers

Nat West Bank Plc, 40 Queens Road Bristol, BS8 1RF

Barclays Bank Plc, 60 Union Street Bristol, BS1 2DY

Investment advisor and stockbroker

Citi Quilter, Queens Quay 33-35 Queen Square Bristol, BS1 4LU

General Manager

Mr Eddie Grinham CMgr FCMI

Veterinary Manager

Miss Mandy Stone BVM & S, MRCVS

Bristol Dogs Home Manager

Miss Lynn Gilman

Inspectors

Chief Inspector B Griffiths	
Inspector J Atkinson	Inspector A Barnes
Inspector I Burns	Inspector C James
Inspector J Norman	Inspector M Albinson
Inspector S Daly	Inspector K Downes

Animal Welfare Officers

S Coombes S Carlson C Hone D Hatfield

National Cruelty Line

0300 1234 999

Chairman's Report

This year, as with 2009, the Branch has been stretched to breaking point with more and more people than ever finding themselves in need of our services. The RSPCA Clinic admitted 1042 strays throughout the year ranging from the normal dogs, cats and small animals to the more exotic species such as 21 corn-snakes dumped outside their door two days before Christmas. The Clinic also dealt with 838 wildlife admissions such as badgers, hedgehogs and numerous species of bird.

The Clinic during 2010 gave subsidised treatments to 7968 animals brought in by members of the public. This includes treatments to 3774 dogs, 3220 cats 331 rabbits and 643 miscellaneous animals.

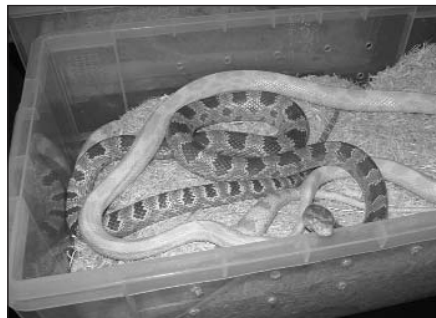
The Branch Animal Clinic during the year neutered a total of 1456 animals which is up by 6% on last year. This included 244 dogs, 309 cats, 144 rabbits and 63 miscellaneous animals for members of the public and 268 dogs, 355 cats, 31 rabbits and 42 miscellaneous animals for the Dogs Home.

In our continuous effort to promote responsible pet ownership, the Clinic also micro-chipped 780 animals this year which included 412 dogs, 357 cats and 11 miscellaneous animals.

I happened to witness one of the most unusual stray admissions, about 5 days before Christmas. I had called into the Clinic at closing time to drop off some Christmas biscuits, and as I arrived, the receptionist had just received an anonymous phone call, suggesting someone should look outside the Clinic. When staff went out to investigate, they found six large plastic crates, stacked up in the snow by the back gate. Once safely inside in the warm, we cautiously opened the boxes. We had already guessed that this was unlikely to be a delivery of Xmas presents for the staff, but even so, we were rather taken aback to discover that each of the boxes contained 3 or 4 adult corn-snakes!

There were 21 abandoned corn-snakes in all. It was terribly sad that someone could just dump these poor warmth-loving creatures in temperatures which were well below freezing, with little real thought for their welfare, but our

main worry now was what to do with them now they were here.



There was a bit of a panic about having to accommodate 21 snakes in the Clinic, as we only have one vivarium. But the day was saved by our local reptile rescue, who, very helpfully, agreed to take them all that same night. So, after a quick health check by the Clinic nurses, and some extra tape around the box lids to ensure no escapees, they were transported off to more suitable facilities.

The Bristol Dogs and Cats Home continues to actively promote the importance of micro-chipping, and all cats and dogs adopted from the Home were chipped before they leave, as are strays when claimed by their owners. During 2010 Bristol Dogs Home found new homes for 329 dogs, 437 cats, 21 rabbits and 144 miscellaneous animals totalling 931 animals. The Home was responsible for micro-chipping 549 of these animals and a further 145 dogs and 2 cats were micro-chipped when they were claimed by their owners. In total 730 animals were micro-chipped by the home.

The Home took in a total of 687 stray dogs during the course of the year which was an increase of 50 on 2009. A total of 398 of these were re claimed by their grateful owners which is only three more than 2009. In addition the Home received for re-homing 149 dogs, 169 cats and 60 miscellaneous animals directly from owners who could no longer look after them for numerous reasons.

In June the Small Animal Unit was officially opened by The Lord Mayor of Bristol, Colin Smith. The opening was also attended by Mr and Mrs Davis who are the relatives of Mrs Margaret Miles whose very generous legacy paid for the vast majority of the work to

be completed. Mr and Mrs Davis were given an official tour of the Small Animal Unit along with the Lord Mayor. We were very grateful to the Lord Mayor for giving up so much of his time as he spent over an hour talking to as many volunteers and members of staff as possible.

The Unit has transformed the way in which we look after the small animals that come into our care and re-homing figures for small animals has gone up during 2010. The Unit wasn't built without the inevitable hiccups. In January the final process of laying the flooring was delayed for a considerable time due to the cold weather. The concrete mix called Flowcrete that we wanted to be used could only be laid above certain temperatures and the cold snap meant that work had to come to a stand still until the weather warmed up. The final result when the builders moved out was exactly what we required. I have to give special thanks to Lynn Gilman, Eddie Grinham and Paul Sanders for their input throughout this build.

In May the whole Branch once again opened its doors to the public for its open day. Over 700 people attended and were able to see behind the scenes of how our busy animal Clinic and Dogs Home work. There was plenty for people to see with the x-ray room and operating theatres opened up in the Clinic and the Dog Behaviourist on hand for advice in the Dogs Home. There was also plenty for the kids to do with the ever popular face painting and children's quizzes. The day was made all the better by the glorious weather we had which allowed visitors to sit outside and have a coffee and a pasty whilst listening to the live music which was laid on. All in all this was a very successful day which we hope to repeat every couple of years.

I want to thank the volunteers who give so much of their time every year in order to help the Bristol Branch continue its work for animal welfare. A few I would like to single out this year are Terry and June Fear who collect and raise awareness at RSPCA week every year from Tesco in Thornbury. The volunteer dog walkers whose efforts make sure the dogs in our care get some deserved exercise and stimulation every day and Roger Burgess who has covered maternity leave on the Dogs Home ambulance duty since April, and who I am told is loving his volunteer duties. They all

do a wonderful job and their efforts are always greatly appreciated, not just by myself but also all the Branch staff.

Chief Inspector Becky Griffiths and her staff have worked exceptionally hard this year in the midst of National RSPCA's cost cutting exercises. Becky has brought a special kind of energy to our Branch and her attendance at Branch meetings is always appreciated by the Trustees. As the Chairman it is always pleasing to see the co-operation between Branch and the Inspectorate and for this my gratitude goes out to Becky and her team.

Finally, I want to express my gratitude to Lynn Gilman, Manageress of Bristol Dogs and Cats Home, Mandy Stone our Veterinary Manager, Eddie Grinham the General Manager and all their respective staff members who work so hard and tirelessly throughout the year to make the Bristol Branch a success.

The Committee

The committee only saw a couple of changes throughout 2010. At the beginning of the year Philippa Carey joined us as an observer and then later at our AGM in June she was co-opted on as a Trustee. Philippa is a Director at the company she works for and brings with her a wealth of business knowledge.

Gordon Butcher sadly resigned as a Trustee in April after committing so much time to the Charity. Apart from these two changes the committee stayed as they were bonding very well as a team and building on their experience.

The committee now meets eleven times a year with our AGM held in June. There are still vacancies to become a Trustee and anyone interested in doing so should contact either myself or Eddie Grinham the General Manager.

Finally, I want to thank the committee for their continued support, commitment and dedication throughout 2010.

Jonathan Parker
Honorary Chairman

General Manager's Report

This year, as with my first two, have been progressive with many changes taking place across the Branch.

There were a couple of changes to personnel and their hours this year. In September our Fundraising Assistant Rusti Macapagal resigned after three years and left us in November. This left Fundraising Manager Jill Roynon and Trustee Lyn Slocombe to read through 94 application forms and then interview thirteen candidates to find a suitable replacement. Interviews took place in December and the successful candidate, Rebecca Law will start in her new post in January.

Two of our volunteers deserve a special mention this year for covering sickness and maternity leave. The Branch Administration Assistant changed her hours to go part time in August which left us a little short with trying to get the photos onto the website. We were lucky in Lindsay Harris, and a big thank you to her, as she stepped up to take them and did a fantastic job in keeping the website up to date and fresh. Roger Burgess covered the Dogs Home ambulance driver for three days a week whilst the regular driver went on maternity leave in April. Both have proved to be invaluable with an amazing amount of dedication between them.

In March we held a volunteer thank you evening which is one of our ways of expressing our gratitude for all the help and support we receive throughout the year. Several awards were presented on the night including The Society Pin award to Jill Smith, Jean Rogers and Jean Goulder. We had a special certificate, The nothing is going to stop me award, which was awarded to Jean



Volunteers with their awards



Lord Mayor at the Official Opening

Pitts for walking 5 miles in the snow to make sure the laundry was done so all the animals in our care would get a warm clean blanket for the night. This is superb dedication which we just had to recognise. The volunteer base has grown all year but we have a dedicated few who constantly amaze me every year with their efforts. The coffee mornings are fabulous and the last one of the year raised over £700. They are selfless and dedicated to raising money for the Home and along the way raise awareness for our charity.

In April the Branch did it's first ever employee survey in order to find the views of all of its staff across the site. The survey was confidential but the overall results were published for all to see. As far as I was concerned the survey was a success and there were some changes made to policy following the results. This will now be an on-going process and the next one is planned for early in 2011.

In May the whole Branch opened its doors to the public as we once again had an Open Day with nearly 750 visitors passing through on one day. This was a fantastic opportunity to show the public the work that the Branch does and it allowed people access to areas normally closed off to the public. Although primarily an awareness day we also raised over £3000.

The Small Animal Unit was officially opened in June by The Lord Mayor. The opening was attended by Mr and Mrs Davis who is the Nephew of Mrs Miles whose legacy to Bristol Dogs Home made the build possible. Legacies account for well over half of our income every year and without this support we simply would not be able to sustain the invaluable work we do. Thanks must also go to Paul Sanders our Maintenance and Facilities Manager who did a fantastic job on not only over seeing this project through but also for coming up with improvement ideas on the original design as the building was taking shape.

The dog show in June was fantastic this year and I feel sure we will be back in Whitehall again this year all being well. The Fundraising team did a tremendous job organising this event and the delicate decision to move the event to a new site paid off, so well done to all concerned.



New fascia on the Charity Shop

The RSPCA Charity shop at Gloucester Road saw a few changes this year. In January the leaking roof over the extension was worked on in order to keep the rain out and in December a new shop fascia went up to replace the existing one. This was done to show paying and passing customers that Bristol Dogs and Cats Home is also a part of the Bristol Branch. The turnover for this year was up again and the shop hit the target I set with a 19% increase on the previous year. There are still improvements to be made at Gloucester Road but they are definitely moving in the right direction.

This year for the first time I asked the Trustees to add another meeting to the schedule so they now have eleven meetings and an AGM every year instead of ten. This has helped in the decision making process as meetings around the summer holiday period are now closer together. The Trustees have given tremendous support this year and in particular special thanks should go to John Bonner, Lyn Slocombe and Sarah Millar for their help in changing Branch policies. Without their input the wheels of change were moving far too slowly and becoming very frustrating.

At every available chance that I got I was out giving talks to groups and also visiting

church services. Bedminster Spiritualist Church and St Peters Parish Church in Filton both helped raise awareness, funds and food this year. Bedminster held their Harvest Festival in favour of Bristol Dogs Home throughout September raising over £1000 and ten dustbins full of food, and Filton held their annual Pet Service in October and all money raised went to the Branch. If you have never been to a pet service I suggest you try and attend this one next October.

The Inspectors for our area have been busy again as their report will explain, but I have to thank them for their support to Bristol. There is a good working relationship between the Branch and Inspectors and this is something we are keen to maintain. A special big thank you to Becky who's shoulder I cry on regularly.

Our finances this year have been concerning from the start. Donations are down due to the financial climate but our saving grace as with the previous two years was our legacy income which has kept us afloat once again. A big thank you to Graham, the Finance Officer, who covered my leave periods this year and instigated a set of budgets for each function within the Branch. Graham has written a report which is included in the following pages.

Sadly we had to say goodbye to three volunteers this year. Mabel Lyne who volunteered for over 10 years at the Dogs Home passed away in May. Dennis Smith volunteered alongside his wife Marion for the Dogs Home for over 10 years but sadly passed away in June. Finally Ivan Pentland who did our very successful quiz nights passed away suddenly in September. All three dedicated time to Bristol Dogs and Cats Home and all three will be missed in the years to come.

Finally as always, I want to thank all the Trustees for your continued support, all the staff for your continued loyalty and every single volunteer for your continued enthusiasm and commitment. We should all feel extremely proud to be part of this Branch in whatever capacity and feel very proud we are all making a difference to animal welfare in the Bristol area.

Eddie Grinham
General manager

Clinic Report

Well, we thought 2009 was busy, but 2010 threw even greater challenges at the Clinic in terms of workload. The economic climate has really begun to show its true colours, when it comes to the effect it has on animals. The demand on the Clinic services significantly increased in every area – more people in need of our subsidised veterinary service, more unclaimed injured and ill strays, more abandoned animals, more pets “signed-over” into our care, and more neglected and abused animals brought in by the Inspectors. More absolutely EVERYTHING in fact, and it’s fair to say that we struggled a little to keep up during the busiest summer months. Fortunately the Clinic team was amazing, as always - everybody pulled together and worked their socks off to make sure we helped as many animals and their owners as humanly possible.

We took in 1042 stray animals in need of care – one of the most surprising of these was Sheila the sheep. An RSPCA Inspector was called to collect Sheila in the early hours of the morning, as she had been found wandering on Bristol’s Park Street outside the Gourmet Burger Kitchen at 3am! There aren’t too many places an RSPCA Inspector could find that would accommodate a sheep in the middle of the night, but the 24-hour service at our Clinic can usually be relied upon to help out with any kind of animal emergency, and this was no exception. Thankfully, Sheila was perfectly healthy, and it turned out that she had been pinched from a farm in Keynsham and taken to Bristol, probably as some kind of prank. She was reunited with flock later that day, much to her delight!

We took in 838 wildlife casualties, one of which was a little bat who had got himself into a bit of a predicament. He had flown into a sticky fly strip and, along with lots of unfortunate flies, found himself firmly attached to it. He was rescued by a member of public, who carefully peeled him off the paper, then brought him into the Clinic for assessment. Luckily there were no physical injuries, but there was still glue on his wings,



Bat stuck on fly paper

and every time he tried to fly, they got stuck together. We needed to get the glue off without tearing the fragile tissue, and safest way to do this was to use butter to dissolve it. We spread butter on the wings, let it sit there for a while, then washed it off with very dilute washing-up liquid. We had to do several cycles of this, but then, thankfully, the glue started to shift. So, I’m happy to say, the bat was better after a bit of butter...!

The amount of work we do for the RSPCA Inspectors increased quite dramatically this year. Not only did our local Inspectorate group size increase in both geographical area and in man-power, but sadly they seemed to be sniffing out more vulnerable animals that needed our help. We provide veterinary care for the malnourished, ill or injured animals that the Inspectors seize under the Animal Welfare Act, and our vets often also provide the expert veterinary report that an Inspector needs if an offender is to be prosecuted for neglect or cruelty. Our cases this year included two Cavalier King Charles Spaniels who were found emaciated and suffering from anaemia. One was so severely anaemic, he collapsed and nearly died on the way into the Clinic. Medical investigations proved that the blood loss was caused simply by the extraordinarily heavy flea burden the dogs were carrying - in failing to provide basic pet care like flea control, the owner had nearly neglected her dogs to death. Happily, both dogs made a full recovery in our care and were successfully re-homed.



C/I Becky Griffiths with volunteers on Open Day

May saw our biennial Branch Open Day, which is our chance to show people what we do behind the scenes. All the clinical areas were open to the public, with vets and nurses on hand to talk to people about what happens during a normal working day. Visitors were also able to try their hand at diagnosing x-rays, with a presentation in the radiography room, and there were loads of displays showing interesting veterinary cases that have passed through the wards. The event was a great success, and, as always, I'd like to thank all the staff and their friends and family who volunteered to help out on the day.

This year also saw the start of a new outreach project for pets belonging to people in housing crisis, which we've set up in partnership with the charity St Mungos. Our "well-dog" Clinic takes place once a month at a local homeless hostel, and provides free health checks, flea, worm and minor treatments for these dogs that might otherwise rarely, if ever, see a vet. The Clinic is very well attended, by owners who genuinely care about their pets, whatever other problems they may have in their lives, and it is great that we can help ensure the welfare of these dogs.

We may have saved hundreds of animal lives, but medical equipment-wise, 2010 was a year of demise...! Both of our two incubators and our x-ray developer finally gave up the ghost after 15 years of service. Thankfully, a combination of the Branch's Spring "Health and Happiness" Appeal, the Branch volunteer fundraisers and a couple of very generous individual donors meant that we were able to replace all these essential pieces of kit with very little delay, so thank you to all concerned.



Anoushka Barnes at Branch Open Day

On the staff front, things have been pretty stable, with most of team seeming part of the Clinic furniture by now! The main staffing change in 2010 was the creation of a new role – Evening Animal Care Assistant. We now have a team of animal carers, who between them cover an early evening shift every day of the week, helping out the Night Nurse with in-patient care, on the often overflowing wards. The main staffing challenge of the year was providing cover for one of the Night Nurses who was on long-term sick leave – I am therefore very grateful to Anoushka Barnes RVN, one of the day nursing team, for agreeing to temporarily step into the night-working role, thus ensuring the quality of our 24-hour emergency service was maintained.

As always, I will finish this report by whole-heartedly thanking the whole Clinic team. This year really has been a challenging one, and I have been constantly impressed by everybody's hard work and dedication. Although I suspect 2011 is perhaps going to bring even more difficult times, I am confident that as a team we can weather any storm, even if it's raining cats and dogs...!

Mandy Stone
Veterinary Manager

Bristol Dogs and Cats Home Report

Early this year we finally got our hands on our new small animal unit. Out of necessity, our rabbits, ferrets, rats, hamsters etc. had been housed in far from ideal conditions during the re-build and it was wonderful to be able to transfer them to their new, luxurious accommodation.

I must express my huge thanks to the staff...particularly Joe... who worked for many months in a very cramped and difficult space yet still managed to maintain a high level of cleanliness and care.

We now have ten spacious units for rabbits and guinea pigs and seven units for ferrets, with additional space for small rodents and birds. Many people will be unaware that we take in ferrets but, last year, we admitted 62. For me, it was a joy to see them in their new accommodation, either tucked up in blankets in their sleeping area, or playing like fools in their outside runs....better than watching the television any day!

Margaret Miles' generosity has made such a difference to the welfare of the small animals which come into our care and I like to think she would agree that we have spent her legacy wisely.

In February, along with many other animal centres, we had a request to help with accommodation for dogs which were subject of an Inspectorate case. We admitted four Dobermann pups which were between 16 and 20 weeks old. They all had minor health problems and they were slightly underweight but they were still beautiful, happy puppies.

We are all well aware of the time it takes for these cases to reach the courts and it was November before we were cleared to start the re-homing process. It is testament to the hard work of our Animal Care Assistants....particularly Carolyn and Bones who work the Isolation block...and to our volunteers that, nine months on, we had four healthy and well adjusted young adult dogs which had spent their most formative months in the far from ideal environment of an inner city kennel.



Plug with Gizmo

In spite of the grim economic climate, re-homing has gone very well and we even achieved a very small increase, most notably on the feline front. 437 cats were re-homed and October was a record month with a staggering 66 cats and kittens adopted!

In May we again participated in the bi-annual Open Day. This Clinic initiative has gone from strength to strength and is a brilliant showcase for the work of the Branch. I was wary about opening the whole of our site, being very conscious of the stress the animals may suffer due to the increased volume of visitors but my fears were unfounded and we had a very enjoyable day and some very positive feedback.

July 26th was our annual Dog Show/Fun Day. Apart from a brief change of venue to Blaise Castle Estate, the show has been held at Ashton Court every year since the first "Scruffts" organised by Dianne Britton 15 years ago. This year we moved to a new site, namely Whitehall Rugby ground and the turn out was fantastic. A very popular event was the parade of Dogs Home dogs and a big thank you must go to the volunteers involved in transporting and showing the dogs. It is an ideal site with all the amenities we need and I'm sure Jill and Becks will make the 2011 show even better.

Our fundraising group has been doing sterling work this year and, at the time of writing, they are nearing their target to provide much needed new heating in Frome kennel. They have already raised the necessary funds to provide new fencing and flooring in our exercise yard so I think this must be a record year. Their enthusiasm and dedication is very much appreciated.

Thanks, as always, to all our friends, supporters and volunteers for their assistance throughout 2010.

Lynn Gilman
Dogs Home Manageress

Fundraising Report

There is no mistake that 2010 has been a difficult year for the fundraising department. Although the Government announced that we were officially out of recession at the beginning of 2010, this year we have clearly seen the effects of the economic downturn with an increase in demand for our services accompanied by a dramatic and evident decrease in income.

As expected, with high levels of unemployment and people bracing themselves for tough times ahead, charitable donations were bound to suffer. However, possibly as a result of increasing unemployment, we have seen a rise in the number of volunteers joining our ever expanding team. With more people out of work, volunteering has been seen as not only a potential route back into work but also provides a worthwhile and beneficial activity to enrich their time. Regardless of their motivation for joining the team, we are always grateful for the dedication shown by our volunteers who play a vital role in the charity, from dog walking to face painting at fundraising events. Additionally, our volunteer fundraising group were busy throughout 2010 raising an incredible £3,987.32 through their coffee mornings and



Mutt Strutt in May

other activities. This money has enabled us to buy a new incubator for the Clinic and to replace the flooring in our dog run area so that volunteers and dogs can now use this facility to spend valuable time playing and exercising off the lead.

As anticipated, the level of general donations coming into the charity during 2010 was significantly lower than 2009. We suspected that events were a potential area of development this year as people may be more willing to spend their valuable money while having a good day out, rather than making a regular donation. We have therefore worked hard this year to sustain and build on the level of income from events.

2010 began with a Race Night, followed quickly by the annual Spring Fair in March which raised £2,049.88 profit for the Dogs Home. This event heralded the beginning of the Spring season which was a very busy period for the fundraising department. RSPCA Week, held at the end of April, is a national event aimed at raising funds and awareness of the work of local Branches and animals homes. As usual Tesco collections took place throughout the week at 5 stores across the region. During this week we rely on the support of our volunteers to collect outside of these stores, although not a popular role, it makes such a huge difference, raising nearly £3,000 and trolley loads of animal food. As part of RSPCA Week we also organised another sponsored Mutt Strutt over the bank holiday weekend. This popular event did very well once again, with participants raising a wonderful £2,279.38 in sponsorship, a slight increase on 2009, thanks to everyone who so generously supported them.

2010 also saw my first Open Day which encompasses the entire organisation. For this event the Fundraising team worked closely with the senior managers of the Clinic and Dogs Home to make the event a huge success. While the main focus of the event is to raise awareness of our work and animal welfare, fundraising was still an important aspect and we were able to raise £3,374.97 profit which was a great result. Only two months later we held our annual Dog Show

and Fun Day but this year we had a change of location. Due to the limitations imposed at Ashton Court we felt that there was little room for developing the event. After a long hunt for a suitable venue we finally relocated to Whitehall Rugby Football Club in Speedwell, not too far from the Centre. This venue provided us with the opportunity to increase our income and decrease our expenditure which is exactly what we achieved. Despite its lesser known location, thousands of people turned out to enjoy the warm summer day with their family and four legged (sometimes three!) friends. The event raised £5,049.36 profit, nearly £2,000 more than in 2009! Well done to everyone involved and lets hope we can make it an even bigger hit in 2011.



Dog having a go at Dog Show

The final event in our calendar, the Home's annual Christmas Fair, ended the year on a high. We were back over at the Dogs Home after the completion of the new small animal unit, so it was a bit of a squeeze. It was a bright, if cold day and despite a few blue lips, the day was a massive success. The crowds turned out in record numbers which really boosted everyone's spirits and a great day out was had by all. We really went out with a bang as the event raised over £3,500 profit (nearly £1000 more than 2009!), more than ever before!



Volunteers at Spring Fair

We ran two main appeals during 2010. In Spring we launched the Health & Happiness Appeal to raise vital funds to enable us to buy and maintain the essential equipment needed at the Clinic, giving animals a second chance for a happy and healthy life. We made a secondary appeal for this in the Autumn newsletter as we were only a short way from our target. This was very successful and in the end we raised over £3,500 which was enough to pay for the x-ray processor that finally had to be replaced in September. The appeal has remained open to donations as we still need to pay for maintenance of this crucial equipment.

The second appeal of the year was our annual Winter Warmer Appeal which was launched in October. This appeal has been running every winter for many years and has always been very successful. Stores around the region collect food by the trolley load thanks to the generosity of the public and last year we raised nearly £6,000 in cash donations alone. Sadly, this was not the case in 2010. We saw a dramatic decrease in food donations from nearly all our collection points, much to the dismay of the proprietors and the monetary donations were down by nearly half that of 2009. This has always been a very popular appeal and I think it is therefore a very good measure of the general decline in donations coming into the Branch during this economic climate.

On a more uplifting note, our second annual Prize Draw was drawn at the end of September. While the gross amount raised from the draw this year was lower than 2009,



Volunteer face painting

we were able to keep costs down thanks to the generosity of all organisations who donated prizes, especially Paul Roberts Hi-Fi and Ramada Plaza Hotel for our top prizes. As a result we actually raised over £200 more than last year.

There was one last blow to the fundraising department towards the end of 2010 when Rustichelli Macapagal, our Fundraising Assistant, decided to leave us to follow her dreams in the theatre. Rusti was a joy to work with and will be greatly missed. Recruitment commenced and we were overwhelmed by the response. Finally we selected Rebecca Law as the new member of our team and she joins us in January 2011, to begin the new, and hopefully more prosperous year.

Once again 2010 has been a difficult year for the fundraising department but with the continued and loyal support of our dedicated volunteers and supporters, I believe we can step into 2011 with renewed hope. Many thanks, once again, to you all – we would not be here without you.

Jill Roynon
Fundraising Manager

Charitable Trusts

The Walker Trust £200

**The Basil Brown
Charitable Trust £250**

**Vernon-Smith Family
Charitable Trust £100**

Also thanks to

**Bishop Flemming
Chartered Accountants**

Standfast Security Systems

**Principal Electrical
Services Ltd**

Finance Report

The current economic situation has led to increased demand for our services while squeezing many of our income streams. Increases in operational income and generous legacy receipts have sheltered us against a significant fall in donations and rising costs. Both charities ended the year with manageable net losses.

This level of income may be difficult to repeat in 2011, careful management of costs will be essential if services are to be maintained.

Graham Harkess
Finance Officer



Shop Report

This last year has seen the shop develop with continued growth in custom and income, improving on last years figures by 19%.

Improved figures have been achieved over and above last years figures by a combination of factors, one of which was creating extra rail capacity in the upper sales floor to accommodate men's wear, and in the lower front of shop area increasing the sales floor capacity for both ladies wear and children's wear rails. During September, with the increased sales and therefore faster turnover of stock being purchased at the time of the seasonal change-over, an improved system of processing fresh seasonal stock was implemented to ensure continued stock density on the sales floor to keep up with customer demand. In November we held a ten-day silent auction in the shop window finalising on the 16th November. This raised over £150 for successful bids on five items.

During 2010 the shop window has been used extensively to promote the animals in Cats and Dogs Home in need of re-homing. This attracted a lot of interest and enquiries in the shop, widening the public awareness of the animals' need for re-homing and the work we do as a Branch for animal welfare. Public awareness has increased and our shop front image was updated in December



Sue and Carol



Andi receiving NVQ Award

by a brighter, cleaner more modern sign. Customers have given us positive feedback on our new look and shown a keen interest in our work for local animal welfare.

Two more volunteers have gained their certificates in Retailing NVQ/Diploma, well done to Andrew and Chris. Following on from their success, there are a further two volunteers who have joined the NVQ programme with us in the shop. New volunteers have joined our team, they are most welcome with all the extra work involved in processing stock and sales and it is thanks to all the volunteers who give their support in time and hard work that the shop has improved so much.

Thank you to all our existing and new customers who supported us during 2010 and a special thank you to our volunteer team.

Sue & Carol Shop Supervisors



Frosty



Jo

Branch Report for Bristol Group, 2010

It is my pleasure to present the Bristol Group report for 2010.

The group area covers 5 Branch areas now, with 12 staff covering that area on a roster system. Our group is fully staffed with 8 Inspectors and 4 Animal Welfare Officers, coping with what has been a particularly busy year. Insp Miranda Albinson joined our group, transferring from Kent, and Insp Kim Downes moved from Somerset to join us.

The main cause for concern has been the increase of work. Incidents in the area have increased greatly. The early hot summer brought a huge increase in concern for animals without shelter, no water and left in hot situations. The group, have at times, been hard pressed to cover all calls, yet have pulled together well as a team to do so. I think other reasons for the increase in work load have been due to the recession hitting us, people not able to afford vet bills, being evicted and other monetary associated reasons.

As with all parts of the RSPCA we have tried to raise funds for our region this year. Our group decided to sell unwanted items at a car boot sale and on eBay. With that effort, we managed to raise about £160 to put towards the regional fund.

We attended Badminton again this year, and decided to be more pro-active in our attempts to fund raise. So as well as monitoring dogs in hot cars and stray/sick dogs, we had a few fund raising ideas within our tent and also decided to micro chip dogs in return for a donation. This proved far more popular than anticipated and attracted visitors to the event as well as organisers and the local farmer! I used 99 of the 100 chips I ordered and managed to raise about £600, which again went into the regional fund. Our push on microchipping proved its point when we picked up a stray that was chipped and shown as belonging to someone in Lithuania! Fortunately, before we made a decision whether to incur an



Microchipping a dog at Badminton

expensive phone bill or not, the owner appeared in our tent, he had heard that we looked after the strays there and was happily reunited.

We have worked closely with both Wiltshire and Avon and Somerset Fire service, with their large animal rescue teams. We have received training from both services, and now have an awareness of their equipment and new methods used in rescue. It is fulfilling to see the improvement in this aspect of work, which will only improve animal welfare.

The group this year have carried out 2,417 collections and rescues and completed 3,316 complaints. We have also managed to submit 60 cases this year which was the highest in the region and a huge increase on last year.

Obviously I cannot cite all of these cases so have picked out a few interesting ones. We received a call about an abandoned English Bull Terrier with what appeared to have fight wounds, in Trowbridge. Further enquiries revealed that the dog seemed to have been thrown in the river and left there. Miranda took on the case and with persistence, found the owners and the person responsible for the offence. The partner had taken the dog away from the home as it was being attacked by the other dogs. Unable to find someone who wanted the dog, he threw it into the river, so it couldn't follow him back. Fortunately someone had seen the incident, realised something wasn't right and turned back to rescue the dog from the water, as there was



You can help provide warm, safe & comfortable accommodation for animals not lucky enough to have a home of their own.

Please sponsor a kennel, cat pod or small animal unit today

From just £3 per month you can join our Safe Haven sponsors and give that vital support to the work of your local animal centre

In thanks you will receive:

- A personal plaque on our Safe Haven board at the Home
- A Safe Haven car sticker & special certificate
- Our biannual newsletter
- An invitation to a special VIP visit
- And a special small gift



Bristol and District Branch
Registered charity number 205858

For more information, please contact:

fundraising@rspca-bristol.org.uk

01173003968

www.rspca-bristoldogsandcatshome.org.uk

RSPCA Bristol & District Branch Office, 48 Albert Road, St Philips, Bristol BS2 0XA

Registered Charity No. 205858

Yes, I'd like to become a Safe Haven sponsor for Bristol Dogs and Cats Home, helping to give animals in need a brighter future!

Your Details (please use block capitals)

Title Name
Address
Postcode Email
Date / /

Details of sponsorship

Kennel Cat pod Small Animal Unit
At £3 £5 £10 £15 Other £_____ MONTHLY
Or £36 £60 £120 £180 Other £_____ ANNUALLY

Standing Order (Please use block capitals)

Your bank's name
Your bank address
Postcode
Account number
Sort Code (Your sort code is usually in the upper-right corner on your cheques)
Please pay Bristol Dogs Home the amount of £ monthly starting on: / /
And each month thereafter until further notice.
Signature Date / /

BANK USE ONLY

Please pay to Barclays plc, Bristol Bank Sort Code: 20-13-42 Bank Account number: 30199559

giftaid it

We can claim an extra 25% on top of your donation if you pay tax. If you pay UK tax and would like us to be able to claim this tax, please fill in the following declaration, sign and date it.

I would like Bristol Dogs Home to treat the donation of £ _____ that I made on _____, and all future donations I make from the date of this declaration as Gift Aid donations. I understand that I can cancel this request at any time by notifying Bristol Dogs Home, and that I must pay an amount of UK tax equal to the tax Bristol Dogs Home can reclaim on this and all future donations.

Signed:

Print Name:

Date:



RSPCA Staff at Badminton

no place to get out. Consequently the owners were given a caution for not giving the vet treatment needed for the wounds. The partner, a Mr Dyer pleaded guilty to causing unnecessary suffering. He was given a disqualification order for 12 months and ordered to pay £500 costs.

In Bristol, Kim Downes' persistence paid off in locating a tenant of a flat who had disappeared and left 2 emaciated dead dogs, stuffed into a rucksack. Kim managed to track the owner down eventually. It turns out the owner had left the property and returned to find the dogs dead. He pleaded guilty to causing unnecessary suffering to 2 dogs. He was sentenced to 8 weeks custody for each dog, (concurrent) suspended for 12 months. He was also ordered to pay £500 costs. The case evoked such a strong response from the public that the court had to order a ban on his address being printed.

Insp Steph Daly had a case in Swindon where the cats face was so horribly eaten up by cancer that it had to be put to sleep. The owner, Miss Julian, pleaded guilty to unnecessary suffering; she admitted her negligence in interview. She was given a 10 year ban and ordered to pay £350 costs.

Again our Inspectors patience was rewarded when Insp John Atkinson took a Mr Northam, of Bradford-on-Avon to court. John had seen the cat previously and advised the owner to take the cat to a vet due to its emaciated state. Mr Northam ignored this advice, so the cat was taken by John to a local vet, who agreed to support a case of failing to meet an animal's needs. After some very drawn out enquiries, Mr

Northam pleaded guilty and received a 2 year ban and costs totalling £1532. Hopefully a lesson learnt to all who heard of the case!!

We have also been busy rescuing animals. Some of the group are in the regional flood rescue team and are able to use those skills more locally. AWO Simon Coombs braved the cold water in February (although, admittedly with a dry suit) at a fishery/reservoir near West Harptree. A cormorant had managed to get three quarters of its body through netting designed to keep out birds(!) and was hanging down above the water level. Simon swam out to the bird, while Chris James monitored the safety line and managed to retrieve the cormorant successfully. The bird was then eventually taken to West Hatch for treatment and rehabilitation.

The Clinic had a fairly unusual visitor when AWO Carl Hone brought in a sheep in the early hours. The sheep was wandering around Park Street of all places when Carl was sent to it, with no other options, and for the sheep's safety the Clinic managed to accommodate it until his owner (from Keynsham!) picked it up the next day. No one has any idea to this day how the sheep got there.

John Atkinson has had a bit of a trend in his area. He has had 3 Tawny Owls falling down into people's wood burners, 2 were in Bath and 1 in Wooten Bassett. Fortunately all 3 were reachable and returned back to the wild without injury.

I would like very much to thank the hard work of all involved ensuring that animals are looked after in this area. We would not be able to do our work without the efforts of all those who have the same aim as us. My thanks go to the Branches, Animal Homes and the Clinic, without their support, our work would be far more difficult. My thanks also go to those outside the RSPCA who also help us in our line of duty, charities such as Horseworld, World Horse Welfare, and other agencies such as the Police and Fire Service are always ready to help out when possible.

**Becky Griffiths
Chief Inspector**

RSPCA Bristol and District Legacies - January – December 2010

	£		£
M Bately Mann	25,000	A E Long	250
G Charles	500	F Marshall	9,407
M K Collin	20,423	E Mee	200
E M Cox	1,000	M C Miles	19,700
R J L Davies	4,029	V M Powell	500
G D De Lapeyriere	120,000	S E Tanner	61,352
P S Dyte	5,000	L E Thorburn	1,000
M C Fryer	20,000	J H Vernon	9,200
A P Gregory	39,474		
G G Lawrence	6,000		343,335
M A Lewis	300		

Bristol Dogs Home Legacies - January – December 2010

	£		£
K L Arnold	72,314	BCA Kibblewhite	11
R W Aze	13,245	P H Kift	353
J M Burdon-Burley	250,000	M C Miles	500
J P Butcher	500	G M Norris	404
T B C Clark	500	G M Parmenter	3
D G A Cleave	1,000	D J Petrie	500
S L Cox	7	E L Rodda	779
A L Davies	18,649	V F J Shield	200
M W Dunn	250	R M Smith	577
A M Dunster	35,319	W D Smithers	13,293
B J Dyer	5,406	W E J Venn	3,891
M J Fenton	2,000	G R Watkins	10,000
L G Fish	100	R I White	52,585
M Fish	100	C E V Williams	5,000
D M Gingell	2,000	D M Williams	11,764
E Griffiths	100	M W Williams	96,511
E F Harper	250		
W O M Hobbs	14,238		612,710
L M Howe	21		
J E A Jones	140		
E I H Kellway	200		

**Bristol and District Branch of the Royal Society
For the Prevention of Cruelty to Animals**

**Independent Auditors' Statement to the Trustees of Bristol and District Branch
of the Royal Society For the Prevention of Cruelty to Animals**

Year Ended 31 December 2010

We have examined the summary financial statement for the year ended 31 December 2010 which comprises the Statement of financial activities and Balance sheet.

Respective responsibilities of the trustees and auditors

The trustees are responsible for preparing the summary financial statement in accordance with the recommendations of the charities SORP. Our responsibility is to report to you our opinion on the consistency of the summary financial statement with the full annual financial statements.

We also read the other information contained in the Annual report and consider the implications for our report if we become aware of any apparent misstatements or material inconsistencies with the summary financial statement.

We conducted our work in accordance with Bulletin 2008/3 issued by the Auditing Practices Board. Our report on the Trust's full annual financial statements describes the basis of our opinion on those financial statements.

Opinion

In our opinion the summary financial statement is consistent with the full financial statements of Bristol and District Branch of the Royal Society for the Prevention of Cruelty to Animals for the year ended 31 December 2010.

Bishop Fleming
Chartered Accountants and Statutory Auditors
Bristol

15 April 2011

**Bristol and District Branch of the Royal Society
For the Prevention of Cruelty to Animals**

Statement of Financial Activities

Year Ended 31 December 2010

	Unrestricted funds £	Restricted funds £	Total 2010 £	Total 2009 £
INCOMING RESOURCES				
Incoming resources from generating funds				
- Voluntary income: legacies	343,335	-	343,335	407,785
- Activities for generating funds	91,786	-	91,786	107,175
- Investment income	20,178	-	20,178	27,594
Incoming resources from charitable activities:				
- RSPCA clinic: fees for work done	459,835	-	459,835	390,361
Total incoming resources	915,134	-	915,134	932,915
RESOURCES EXPENDED				
Cost of generating funds				
- Cost of generating voluntary income	262	-	262	592
- Fundraising and shop costs	59,331	-	59,331	62,757
- Investment management costs	3,595	-	3,595	7,642
Charitable activities	872,230	1,127	873,357	838,602
Governance costs	7,256	-	7,256	6,677
Total resources expended	942,674	1,127	943,801	916,270
NET OUTGOING RESOURCES BEFORE RECOGNISED GAINS AND LOSSES	(27,540)	(1,127)	(28,667)	16,645
Gains/(losses) on investment assets	88,916	-	88,916	119,555
NET MOVEMENT IN FUNDS	61,376	(1,127)	60,249	136,200
Fund balances brought forward at 1 January	1,775,692	2,687	1,778,379	1,642,179
FUND BALANCES CARRIED FORWARD AT 31 DECEMBER	1,837,068	1,560	1,838,628	1,778,379

All incoming resources and resources expended are derived from continuing activities.

All gains and losses recognised in the year are included in the Statement of Financial Activities.

**Bristol and District Branch of the Royal Society
For the Prevention of Cruelty to Animals**

Balance Sheet

31 December 2010

	2010	2009
	£	£
Fixed assets		
Tangible assets	718,524	734,608
Investments	906,996	807,038
	<u>1,625,520</u>	<u>1,541,646</u>
Current assets		
Stocks	23,498	24,816
Debtors: amounts falling due within one year	125,781	170,766
Cash at bank and in hand	100,615	74,715
	<u>249,894</u>	<u>270,297</u>
Creditors: amounts falling due within one year	(36,786)	(33,564)
Net current assets	<u>213,108</u>	<u>236,733</u>
Total net assets	<u><u>1,838,628</u></u>	<u><u>1,778,379</u></u>
Represented by:		
Unrestricted income funds		
General funds	930,072	968,654
Designated funds	906,996	807,038
	<u>1,837,068</u>	<u>1,775,692</u>
Restricted fund	1,560	2,687
Total funds	<u><u>1,838,628</u></u>	<u><u>1,778,379</u></u>

TRUSTEES' STATEMENT

The summarised financial statements, which comprise the Statement of Financial Activities and the Balance Sheet, are a summary of information extracted from the full financial statements of the Bristol and District Branch of the Royal Society for the Prevention of Cruelty to Animals for the year ended 31 December 2010. The full financial statements have been audited and the audit report is unqualified. Copies of the full financial statements can be obtained from 48 Albert Road, Bristol, BS2 0XA. The full financial statements were approved by the managing trustees on 11 April 2011 and have been submitted to the Charity Commission.

J P Parker
Honorary Chairman

S A Millar
Honorary Treasurer

Bristol Dogs Home

Independent Auditors' Statement to the Trustees of Bristol Dogs Home

Year Ended 31 December 2010

We have examined the summary financial statement for the year ended 31 December 2010 which comprises the Statement of financial activities and Balance sheet.

Respective responsibilities of the trustees and auditors

The trustees are responsible for preparing the summary financial statement in accordance with the recommendations of the charities SORP. Our responsibility is to report to you our opinion on the consistency of the summary financial statement with the full annual financial statements.

We also read the other information contained in the Annual report and consider the implications for our report if we become aware of any apparent misstatements or material inconsistencies with the summary financial statement.

We conducted our work in accordance with Bulletin 2008/3 issued by the Auditing Practices Board. Our report on the Trust's full annual financial statements describes the basis of our opinion on those financial statements.

Opinion

In our opinion the summary financial statement is consistent with the full financial statements of Bristol Dogs Home for the year ended 31 December 2010.

Bishop Fleming
Chartered Accountants and Statutory Auditors
Bristol

15 April 2011

Bristol Dogs Home

Statement of Financial Activities

Year Ended 31 December 2010

	2010	2009
	£	£
INCOMING RESOURCES		
Incoming resources from generating funds:		
- Voluntary income: legacies	612,710	486,282
- Fundraising income	111,532	119,321
- Investment income	51,796	59,450
Incoming resources from charitable activities:	144,753	123,757
Total incoming resources	920,791	788,810
RESOURCES EXPENDED		
Cost of generating funds:		
- Cost of generating voluntary income	9,690	6,488
- Fundraising costs	33,378	32,568
- Investment Management costs	4,702	7,641
Charitable activities	922,007	872,063
Governance costs	6,916	7,092
Total resources expended	976,693	925,852
NET (OUTGOING)/INCOMING RESOURCES BEFORE RECOGNISED GAINS AND LOSSES	(55,902)	(137,042)
Gain/(Loss) on investment assets	117,856	121,024
NET MOVEMENT IN FUNDS	61,954	(16,018)
Fund balances brought forward at 1 January	3,671,630	3,687,648
FUND BALANCES CARRIED FORWARD AT 31 DECEMBER	3,733,584	3,671,630

All incoming resources and resources expended are derived from continuing activities.

All gains and losses recognised in the year are included in the Statement of Financial Activities.

Bristol Dogs Home

Balance Sheet

31 December 2010

	2010	2009
	£	£
Fixed assets		
Tangible assets	2,346,093	2,352,844
Investments	1,354,749	1,143,246
	<u>3,700,842</u>	<u>3,496,090</u>
Current assets		
Stocks	5,268	3,866
Debtors	43,821	140,366
Cash at bank and in hand	64,934	170,866
	<u>114,023</u>	<u>315,098</u>
Creditors: amounts falling due within one year	<u>(81,281)</u>	<u>(139,558)</u>
Net current assets	<u>32,742</u>	<u>175,540</u>
Total net assets	<u><u>3,733,584</u></u>	<u><u>3,671,630</u></u>
Represented by:		
Unrestricted income funds		
General funds	2,378,835	2,528,384
Designated funds	1,354,749	1,143,246
Total funds	<u><u>3,733,584</u></u>	<u><u>3,671,630</u></u>

TRUSTEES' STATEMENT

The summarised financial statements, which comprise the Statement of Financial Activities and the Balance Sheet, are a summary of information extracted from the full financial statements of the Bristol Dogs Home for the year ended 31 December 2010. The full financial statements have been audited and the audit report is unqualified. Copies of the full financial statements can be obtained from 48 Albert Road, Bristol, BS2 0XA. The full financial statements were approved by the managing trustees on 11 April 2011 and have been submitted to the Charity Commission.

J P Parker
Honorary Chairman

S A Millar
Honorary Treasurer

Health & Happiness

Isn't it the least they deserve?

The largest RSPCA branch Clinic in the country treating over 12,000 animals a year, we not only care for the animals at the Dogs Home but provide veterinary care to lost, sick and injured stray animals, subsidised treatment for people on a low income and first aid for wildlife casualties. We work closely with National RSPCA Inspectors to rescue and rehabilitate animals that have suffered cruelty or neglect and also hold clinics for the animals of homeless people.

As Bristol's "Animal Hospital" we perform our own diagnostic lab work and procedures, such as endoscopy, dentistry, surgical (including orthopaedic) & have our own intensive care unit & in-patient facilities.



Although a branch of the RSPCA, we are actually an independent charity receiving no funding from the National RSPCA.

By supporting the Health & Happiness Appeal you will help us to provide & maintain essential equipment needed to offer this high standard of care.

Ensuring that help will always be available for any animal that is in need of emergency medical care, 24 hrs a day.

Together we can provide Health & Happiness to thousands of animals in need. You really could help make the difference between life & death.

To make a donation, please call **0117 3003968** or to donate online please visit www.justgiving.com/Health-HappinessAppeal

RSPCA Bristol Branch & Bristol Dogs and Cats Home - Registered Charity Number 205858

Leaving a Gift in your Will

If animals have given you a lifetime's pleasure, why not help ensure their future by leaving a legacy to us in your Will?

We all dream of a world where animals are given the love and respect they deserve. With the gift of a legacy you can help us be there for every animal that needs us until hopefully, one day, we achieve that dream.

The RSPCA Bristol Branch and Bristol Dogs & Cats Home depend largely on funding from legacies to continue to relieve the suffering of local animals in need, giving them the chance for a happy future.

You don't have to be wealthy to leave us money in your Will - Any amount, large or small, will be put to excellent use. Every penny really does count and a large proportion of our income comes from small legacies from caring people.

Making a Will is a straightforward and non-costly process, although it is important to obtain legal advice. It is also worth remembering that gifts to registered charities are exempt from inheritance and capital gains taxes!

Please remember that we are an independent charity and separately registered from the National RSPCA. If you want your gift to benefit local animals you must specify our registered charity number (205858) and whether you would like your legacy to be made to the RSPCA Bristol Branch or Bristol Dogs & Cats Home.

Leaving us a legacy in your Will is the most amazing gift that you can give, helping us to help animals in need for generations to come.

**For a confidential discussion, please
contact us on 0117 3003962**



www.rspca-bristoldogsandcatshome.org.uk

Registered Charity No. 205858