

Date: ----- Grade 3 - First Term Science Revision Paper Name: -----

I Circle the correct answer

1 Roots and stems carry

- a) sunlight and sugar b) nutrients and water c) carbon dioxide and sugar

2 A plant has roots which keep it

- a) in the ground b) living c) from getting cold

3 The main stem above the ground helps

- a) the bugs bring food b) the flowers bloom c) carry water throughout the plant

4 Green leaves make most of the plant's

- a) Chlorophyll b) food c) seeds

5 The flowers of the plant produce

- a) seeds b) fruit c) leaves

6 What is the function of the skeletal system?

- a) support the body b) give the body shape c) work with muscles to move the body d) all of the above

7 What makes up the skeletal system?

- a) Blood b) muscles c) bones d) tissues

8 Each bone has a particular job. What is the job of the skull?

- a) Pumps blood to the brain b) tells the brain what to do c) helps the body to make decisions d) protects the brain

9 What works with the bones of your skeleton to make your body move?

- a) Blood b) muscles c) tissues d) organs

10 A _____ is a place where two or more bones meet.

- a) Joint b) muscle c) organ

11 Why do plants have seeds?

- a) to grow new plants b) to reproduce c) to help support the plant d) A and B

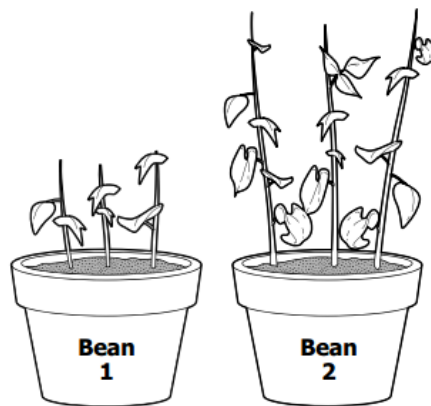
12 What kind of temperature does a seed need to grow?

- a) Warm b) cold c) freezing

13 This is the process when a seed becomes a new plant.

- a) Germination b) fertilization c) pollination

14



Students planted two types of bean seeds. Both types of bean plants are measured after two weeks. Which of these questions are they MOST likely trying to answer?

- F** Which type of bean plant grows faster?
G Which type of bean plant is prettier?
H Which type of bean plant tastes better?
J Which type of bean plant costs more?

15 Which group provides energy for activity?

- a) Bread and cereal grains b) fruits and vegetables c) meat and poultry

16 The body system which gives you support and helps you move

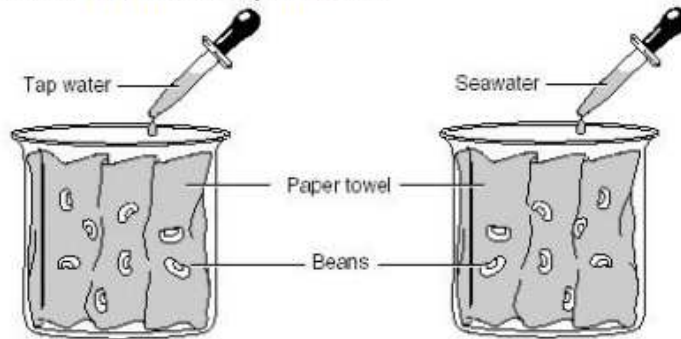
- a) Circulatory system b) skeletal system c) respiratory system

17 The framework of bones is called _____

- a) Muscles b) skeleton c) joints d) organs

- 18 Plants need _____ or they might wilt.
a) Air b) light c) water

- 1 The diagram below shows the set up for a science experiment. What question can be answered from this experiment?



- (A) Can beans grow faster in groups of eight?
(B) Do beans need light in order to grow?
(C) Does seawater affect bean growth?
(D) How much water is needed for beans to grow?
- 20 What is a carnivore?
a) Meat eater b) plant eater c) plant and meat eater

II Write 'true' or 'false' to the given statements

- a) Plants can live without water.
- b) Plants and animals produce their own food.
- c) All leaves look alike.
- d) Seeds store food.
- e) We eat many different parts of plants
- f) Seeds need soil to grow into seedlings.
- g) The purpose of fruit is to be eaten.
- h) Bees are the only animals that pollinate.
- i) All plants grow from seeds.

III Answer the following questions

1 Which part of these flowers do we eat?



2 Class 3 G had a warm classroom. They watered their plants every week. They always left a light on over the plants. Class 3 F had a cold classroom. They often forgot to water their plants. Their classroom was dark at night.

a) Whose plants grew best? Explain your answer.

3 There is a plant inside this black bag. Why will this not grow well?



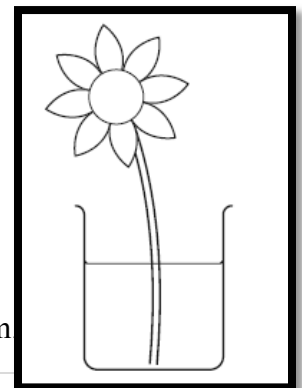
4 Why do plants need flowers? Tick one box

a) To attract insects ☐

b) To catch water ☐

5 A tree has a trunk. What does trunk do?

6 Water goes up to the flower. Colour the water blue.



Now colour in what will happen to this flower when the water goes up the stem

7 What type of gas do animals and people need to stay alive?

.....

8 Why does a plant needs space to grow. Give two reasons

.....
.....
.....

9 Sue knows that what you eat can help you live a healthy life.

(i) What is best for Sue to do to help her have a healthy diet? Tick ONE box.

Sue should...

a) not eat sugary foods.

b) not eat foods that contain fat or oil.

b) eat a variety of different foods. d) Eat only fruit

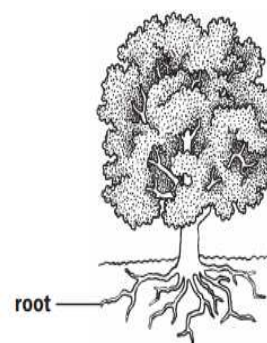
(ii) Sue eats the best foods to give her a healthy life. Give ONE other way Sue could keep her body healthy

.....

10 Class 3 are investigating trees in their school grounds.

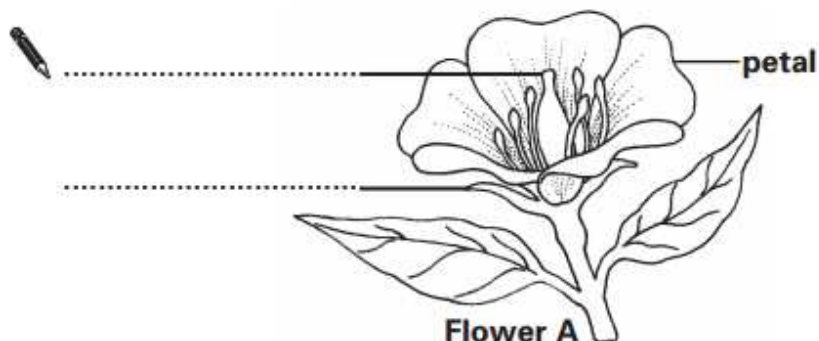
Describe **TWO** functions of the roots.

.....
.....



11 The children observe the flowers on some of the trees.

a) Complete the labels to name the parts of flower A on the diagram below

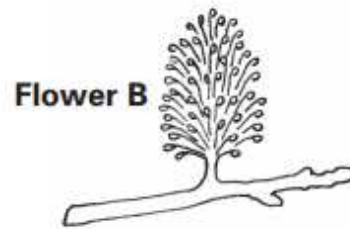


Here are the children's observations of flower B:

The flower does not have a smell.

It does not have bright petals.

It has lots of long stamens.



b) Tick **ONE** box to show how flower B is pollinated.

Use the children's observations to help you.

i) by insects

ii) by birds

iii) by wind

iv) by humans

12 David knows that plants need water to grow.

a) Name TWO other things that plants need to take in for healthy growth

..... and

David grows some plants. He wants to find out if the amount of water affects their growth.

b) Tick **ONE** box after each question to show the best way for David to carry out his test.

Should David use the same type of soil in each pot?

yes

☐

no

☐

Should David put the plant pots in the same place?

yes

☐

no

☐

Should David put the same amount of water in each pot?

yes

☐

no

☐

How many plants should David use?

2 plants

☐

5 plants

☐

Plants absorb rain water from the soil.

C) Name the TWO parts of the plant the water must travel through to get from the soil to the leaves.

1.

2.

13 What is photosynthesis?

14 Name the three things necessary for photosynthesis to occur

15 Name the male and female part of a flower and explain what their job is.

- a) _____
: _____
- b) _____
: _____

16 Use the menu's below to answer the following question

| | |
|--|---|
| MENU 1 Fried chicken Cola soda Potato chips Vanilla ice cream | MENU 2 Peanut butter sandwich Apple juice Pretzel sticks Fruit salad |
| MENU 3 Egg salad sandwich Apple juice Carrot sticks Strawberry yogurt | MENU 4 Turkey sandwich Milk Grapes Vanilla pudding |

a) Which of the four menus are least healthy?

Humans and animals have skeletons with _____ attached. Each muscle is attached to a different set of _____. All muscles work in _____. While one muscle tightens up and _____, the other muscles _____. When muscles contract they get _____ and _____ and when they relax they get _____ and _____

| |
|---|
| fatter muscles bones relax thinner contracts shorter longer pairs |
|---|

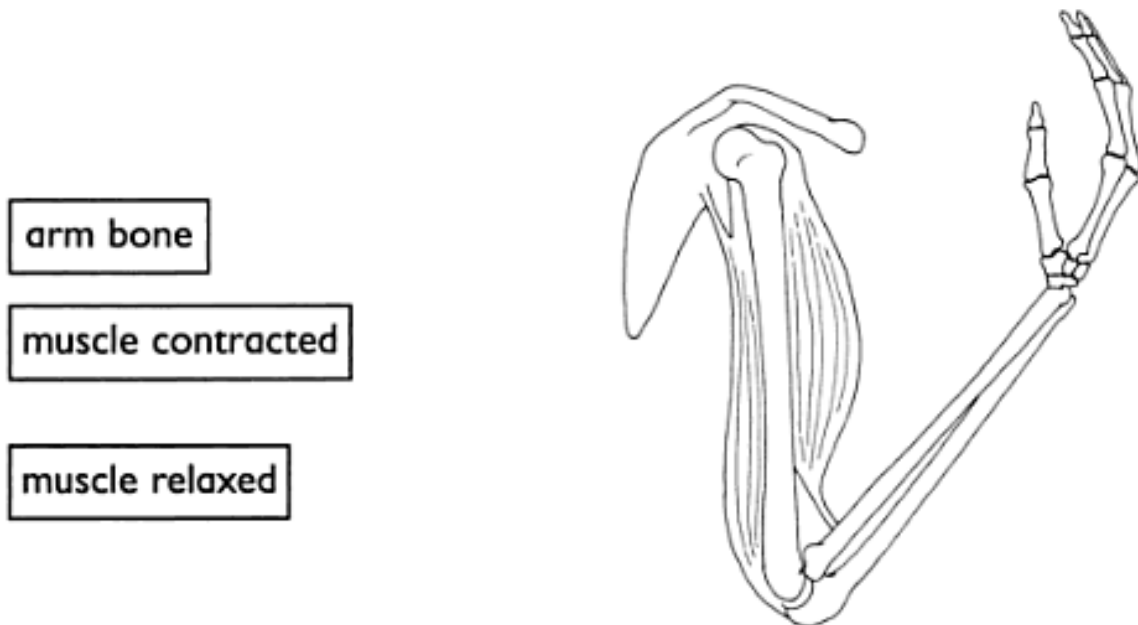
17 Use these pictures to answer the questions given below



A)Which factor is changing?

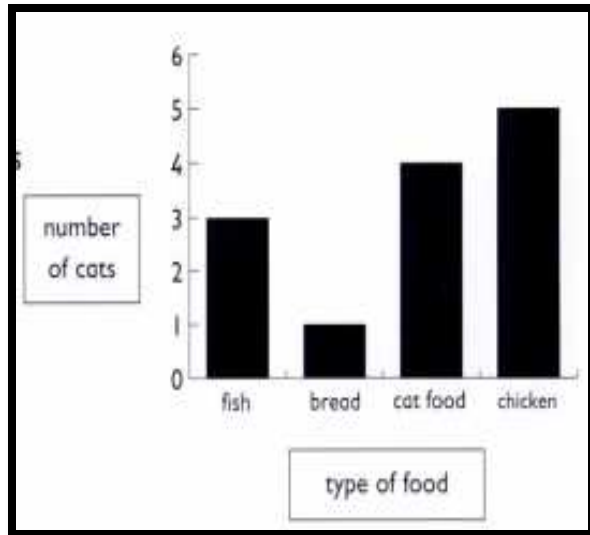
- a) Type of soil b) type of seed planted c) amount of water used d) type of water used

18 a) Name three important things the skeleton does in the human body



c) Show which muscle contract to straighten the arm. **Label** it with a cross (x)

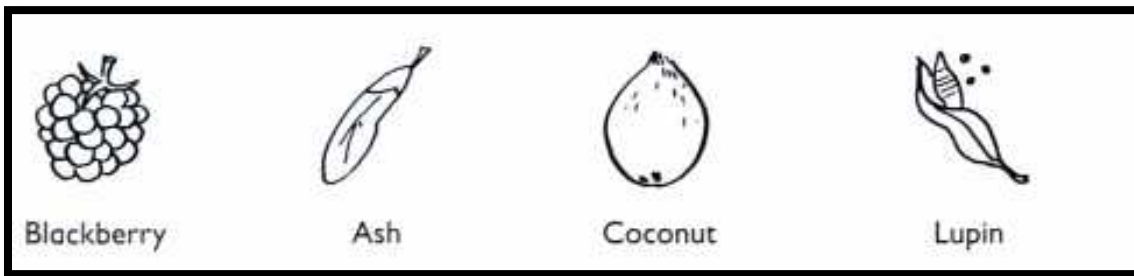
- 19 Bethan and Clarie wanted to find out what foods cats eat. They planned a survey and they plotted their results in a bar chart . Here is their bar chart. Complete the table using the bar chart and answer the following questions given below.



| Type of Cat food | Tally | Number of Cats |
|------------------|-------|----------------|
| Fish | | |
| Bread | | |
| Cat food | | |
| Chicken | | |

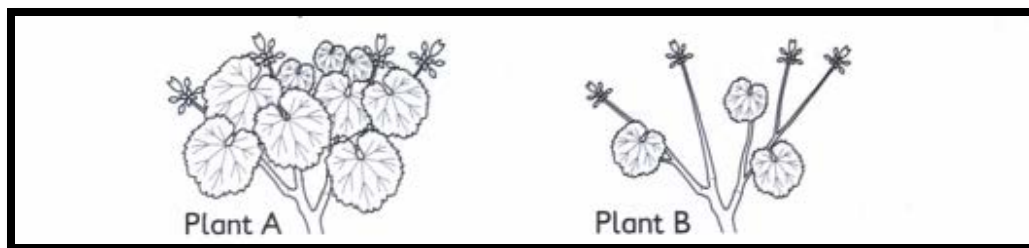
- a) How many cats ate chicken?
- b) How many cats ate bread?
- c) How many cats did Bethan and Clarie use in their survey?
- d) Write down the foods in order, starting with the food that most cats ate.

20 Complete the table to show how the seed from each fruit is dispersed



| Fruit | How the seed is dispersed |
|------------|---------------------------|
| Blackberry | |
| Ash | |
| Coconut | |
| Lupin | |

21 Look at these plants



a) Which plant will grow faster ?

b) Explain why you chose this plant?
