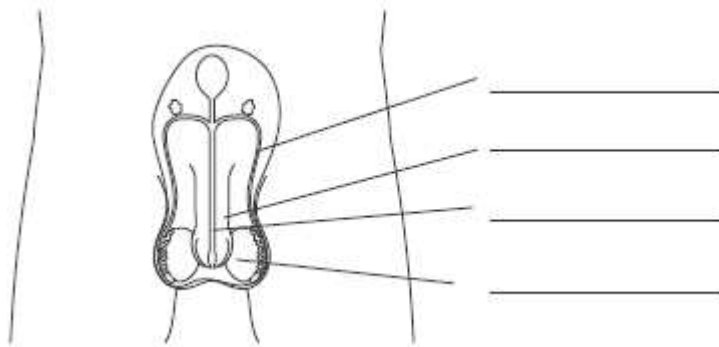


Garnock Academy Level 3 Science
Reproduction Homework 2
SCN 3-14a & 3.14b

Name _____ Teacher _____
 Date to be returned _____ Mark _____

1. a. Label the parts on the diagram of the male reproductive system using the words in the box.

penis	sperm duct	testes	urethra
-------	------------	--------	---------



(2)

- b. Now complete the following sentences using the same words from the box:

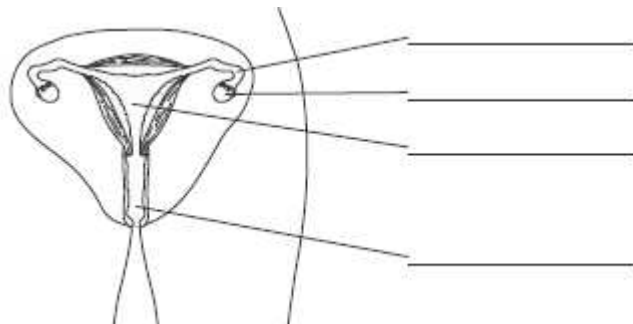
Sperm cells are made in the _____

The tubes through which sperm cells travel when leaving the body are the _____ and the _____

(1)

2. a. Label the parts on the diagram of the female reproductive system using the words in the box.

oviduct	ovary	uterus	vagina
---------	-------	--------	--------



(2)

b. Now complete the following sentences using the same words from the box:

The egg cells are released from the _____

Egg cells travel down the _____ on their way to the uterus.

(1)

3. Draw lines to match the questions with the correct answer.

In what female organ does a developing baby grow?	bag of fluid
What attaches the placenta to the baby?	carbon dioxide
Give an example of a waste material the baby makes.	cord
What is the name of the male sex cell?	oviduct
Where does fertilisation take place?	placenta
What gas from the air does the baby get from its mother?	oxygen
What is the baby surrounded and protected by?	sperm cell
What puts waste from the baby into the mother's blood?	uterus

(4)