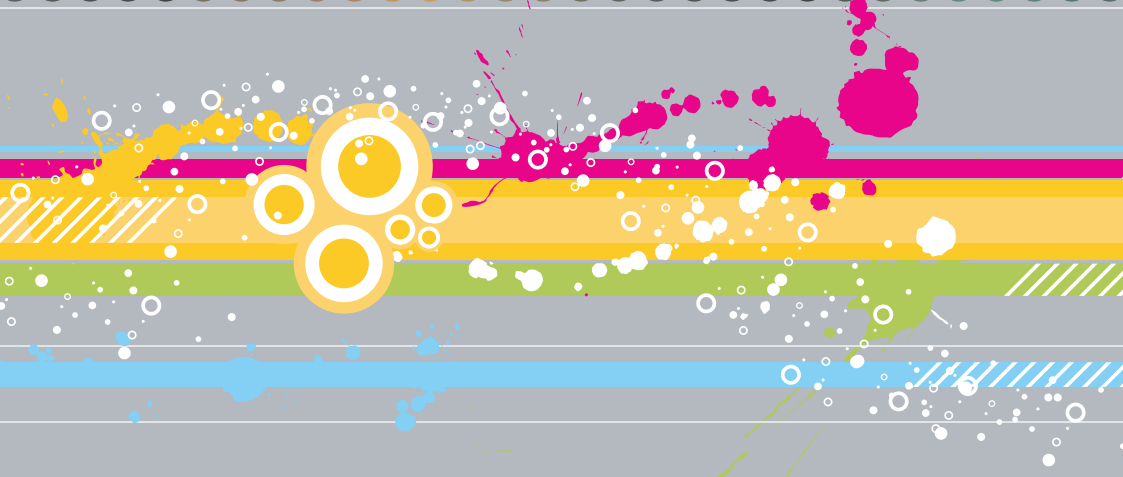
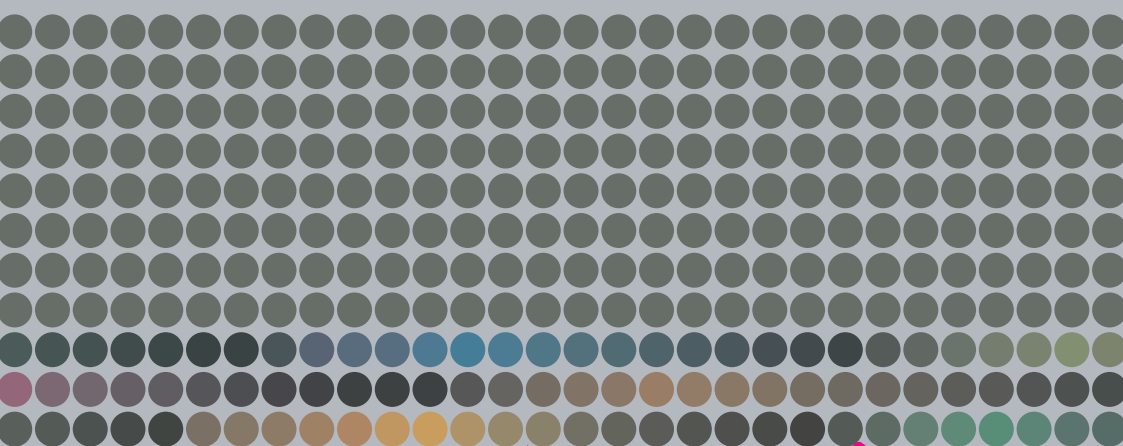


Bury St Edmunds Festival

8-24 May 2009



Box Office: 01284 769505
www.buryfestival.co.uk



St Edmundsbury
BOROUGH COUNCIL

For the best seats in the house...



If you have never visited Glasswells, then this is a great opportunity to discover us. With over 100,000 sq ft of floor space laid out over two floors, this sensational store is oozing with style and charm, offering incredible choice with departments covering every aspect of home furnishing. Our enormous furniture range is complemented with fantastic carpets, flooring and curtains sections. We also have a vast collection of linens plus wonderful gifts, cookshop and lighting departments.



Glasswells

What your home is waiting for!

Newmarket Road,
Bury St. Edmunds, Suffolk IP33 3TU
Telephone 01284 752804

OPEN 7 DAYS A WEEK

RESTAURANT • CHILDREN'S PLAYZONE • FREE PARKING

Visit us online at www.glasswells.co.uk

Welcome



It is a great pleasure to welcome you to the 24th Bury St Edmunds Festival.

The Festival continues to be an important part of the town's cultural life and as ever there is a huge range of things to enjoy. There are returns from a few Festival favourites such as the Philharmonia Orchestra, the Black Dyke Band and clarinettist Emma Johnson. Vocal Sampling wowed audiences several years ago with their astonishing *a capella* salsa grooves and they'll be returning to entertain us again as will Zum with their amazing mix of gypsy, tango and almost any other kind of music you can think of!

Plenty of new things too: the wonderful poet Wendy Cope joins the Endellion String Quartet; 16th-century church music meets the music of Goa as the four singers of the Orlando Consort are joined by three Indian musicians, and Matthew Sharp gives us an extraordinary evening of solo cello music and music theatre . . . with goggles on!

There is some great jazz including Stacey Kent, the acclaimed David Rees Williams Trio and saxophonist Alan Barnes's new band. There will also be several opportunities to enjoy and applaud some of the great local talent that is in such great abundance in and around Bury St Edmunds.

Once again the Festival comes to a joyous end with three nights in the Abbey Gardens in partnership with BBC Radio Suffolk. A 70s & 80s party night, a great night of folk and world music and then the pomp and ceremony of a classical proms night with a fabulous firework finale.

St Edmundsbury Borough Council's continued support of the Festival demonstrates its commitment to quality and excellence in the arts while a big thank you also goes to the sponsors, advertisers, the staff at all the venues, the Box Office, the volunteers, the Blue Badge guides who lead the Festival walks, the stewards at all the events and the staff of the Tourist Information Centre. The Festival couldn't happen without all their support.

Whether you live in the Borough or whether you are visiting here, we hope you enjoy immersing yourself in the delights of the Festival and we look forward to seeing you here in May.

Clr Lynsey Alexander

Portfolio Holder
for Culture and Sport

Nick Wells

Festival Manager

Festival Office,
Borough Offices,
Angel Hill,
Bury St Edmunds
Suffolk, IP33 1XB



Friday 8 May



6.30pm Angel Hill

Beating Retreat

Vast crowds will once again welcome the start of the Festival on Angel Hill with the Beating Retreat Ceremony, this year with the Band of the Royal Parachute Regiment.

Then enjoy the wonder and beauty of Swamp Circus's aerial performers. Performing on a 10-metre high rig, this spectacular acrobatic dance will use beautiful iridescent costumes, masks and aerial dance on silks, cloud swing and web ropes.

Free event ends 7.30pm

Sponsored by **Bury Free Press**

7.30pm Angel Hotel Vaults

Entry by table reservation for dinner
Telephone 01284 753926

Jazz at the Angel

Dinner and jazz in the Angel Hotel Vaults



Box Office: 01284 769505





Photo courtesy of Opera Theatre Company

7.30pm Theatre Royal
Barber of Seville

The success of the Armonico Consort's opera productions all over the country has been overwhelming and with their reputation for producing accessible, fun and exciting music reaching new heights, their return to Bury Festival with a performance of Rossini's *Barber of Seville* is eagerly anticipated.

'Superb' – *The Times*

£28 £23 £19 £12 £8 F ends 10.15pm

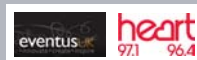
9.00pm Rougham Airfield
**Drive-In Movie:
Dirty Dancing (12A)**

Set to the pulsating rock'n'roll songs of the early 1960s, *Dirty Dancing* is a romantic sexy story about an awkward yet endearing 17-year-old girl. Caught up in the music and rhythm of the period, she falls in love with a charismatic working-class dance instructor who introduces her to the excitement of Dirty Dancing.

Come and spend an evening with a difference watching hit-film classics in your cars and under the stars! The American Drive-In Movie concept comes to Bury St Edmunds: refreshments and bar available and fun to be expected.

Tickets are limited and available on pre-purchase only so please call the Festival Box Office to reserve your place at the Drive In! Car (5-seater) **£20**; 4 x 4 **£25** (limited availability) Over 7+ seats, call organisers on 01284 732032

Drive In Movies with Heart
brought to you by Eventus UK Ltd



Saturday 9 May



11.00am Abbey Gardens

Street Theatre

Come and join us in the Abbey Gardens for fun, skill and mayhem from some great entertainers.

Free Event ends 3.00pm

7.30pm Theatre Royal

Show of Hands

An alchemist couldn't have come up with a more potent, magical mix than multi-instrumentalist Phil Beer and the man described by Mike Harding as 'one of England's greatest singer-songwriters', Steve Knightley. With celebrated and sell-out shows from Glastonbury and the Cambridge Folk Festival to the Royal Albert Hall, Show of Hands is truly a band of the people and remains England's finest roots duo.

'A great live band – catch them if you can' – Johnny Walker, BBC Radio 2

£12.50 – £17.50

Box Office: 01284 769505

9.00pm Rougham Airfield

Drive-in Movie: Mamma Mia (PG)

On the eve of her wedding, a daughter's quest to discover the identity of her father brings three men from her mother's past back to the Greek island paradise they last visited 20 years ago.

Come and enjoy the 2008 global smash hit based on the songs of Abba; timeless songs such as 'Dancing Queen', 'I Have a Dream', 'Voulez-Vous', and 'Take a Chance on Me', are ingeniously woven into an enchanting tale of love, laughter and friendship.

For booking details, see Friday 8 May.





7.30pm St Edmundsbury Cathedral

The Sixteen

Renowned throughout the world for its excellence, the Sixteen will be coming to Bury St Edmunds as part of its annual choral pilgrimage, this year with a programme that celebrates the 350th anniversary of Purcell's birth and James MacMillan's 50th birthday. Earlier in the day, the Sixteen will also be giving a concert for local primary schools as part of Sing Up, the Music Manifesto's National Singing Programme.

Purcell Jehova quam multi sunt hostes mei
 Miserere mei

Remember not, Lord, our offences

Beati omnes qui timent Dominum

MacMillan O Bone Iesu

Purcell Let mine eyes run down with tears

Macmillan Mitte manum tuam (from The Strathclyde Motets)

A Child's Prayer

Sedebit Dominus Rex (from The Strathclyde Motets)

Purcell O Dive custos

Funeral sentences (1st set)

£23 £18 £12 F Half-price standby ends 9.30pm

This performance will be sign-interpreted for hearing impaired patrons by Paul Whittaker, founder and Director of Music and the Deaf.



Sunday 10 May



THE 26 BARONS APPOINTED TO ENFORCE THE OBSERVANCE OF MAGNA CHARTA AT BURY ST EDMUNDS NOV 27th & 28th 1215

NAMES	TITLES	STATUS
1. RICHARD CLARE	BARON OF FORTIBUR	EXTINCT
2. ROBERT DE CARRE	EARL OF ARKUNBERG	EXTINCT
3. WILLIAM OF FORTIBUR	BARON OF FORTIBUR	EXTINCT
4. ROBERT DE MANDVILL	EARL OF WINTON	EXTINCT
5. RAOUL DE QUINCY	EARL OF BURE	EXTINCT
6. HENRY DE BOHUN	EARL OF NORFOLK	EXTINCT
7. RICHARD BEEBE	THE DEE OF ST ALBAN	EXTINCT
8. RICHARD BEEBE	THE DEE OF ST ALBAN	EXTINCT
9. RICHARD BEEBE	THE DEE OF ST ALBAN	EXTINCT
10. RICHARD BEEBE	THE DEE OF ST ALBAN	EXTINCT
11. RICHARD BEEBE	THE DEE OF ST ALBAN	EXTINCT
12. RICHARD BEEBE	THE DEE OF ST ALBAN	EXTINCT
13. RICHARD BEEBE	THE DEE OF ST ALBAN	EXTINCT
14. RICHARD BEEBE	THE DEE OF ST ALBAN	EXTINCT
15. RICHARD BEEBE	THE DEE OF ST ALBAN	EXTINCT
16. RICHARD BEEBE	THE DEE OF ST ALBAN	EXTINCT
17. RICHARD BEEBE	THE DEE OF ST ALBAN	EXTINCT
18. RICHARD BEEBE	THE DEE OF ST ALBAN	EXTINCT
19. RICHARD BEEBE	THE DEE OF ST ALBAN	EXTINCT
20. RICHARD BEEBE	THE DEE OF ST ALBAN	EXTINCT
21. RICHARD BEEBE	THE DEE OF ST ALBAN	EXTINCT
22. RICHARD BEEBE	THE DEE OF ST ALBAN	EXTINCT
23. RICHARD BEEBE	THE DEE OF ST ALBAN	EXTINCT
24. RICHARD BEEBE	THE DEE OF ST ALBAN	EXTINCT
25. RICHARD BEEBE	THE DEE OF ST ALBAN	EXTINCT
26. RICHARD BEEBE	THE DEE OF ST ALBAN	EXTINCT



10.00am St Edmundsbury Cathedral Festival Eucharist

This special service will be set to Haydn's *Missa Sancti Nicolai* (Missa No. 6 in G [Hob.XXII:6]), and the anthem 'Verlieh uns Frieden' by Mendelssohn. The address will be given by the Revd Stephen Shipley, the choral evensong producer for BBC Radio 3.

10.30am Meet at the Tourist Information Centre Walk: Written in Stone

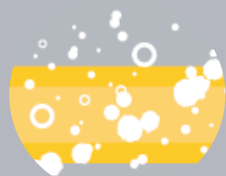
Following on from last year's successful festival walk, this new route brings to life some more of the town's history via the plaques and inscriptions set in stone. More stories of the people, places and events that have helped to enrich Bury St Edmunds

£7 includes coffee and a pastry ends 12pm at Moyses's Hall Museum

11.00am Ickworth House Hanging Basket Workshop

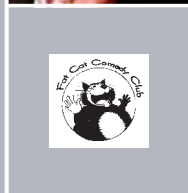
Join Ickworth's Head Gardener Sean Reid as he demonstrates how to prepare and arrange a summer hanging basket. In the afternoon, create your own basket to take home and display. All materials provided; please bring your own gloves. Morning coffee and pastries, hot two-course lunch and afternoon tea included.

£55 includes admission to the park
Booking essential ends 3.30pm



Box Office: 01284 769505





7.30pm Theatre Royal

Stacey Kent

Stacey Kent, a recent addition to the Blue Note roster of recording artists, now boasts seven best-selling albums. She has won a whole string of awards and her most recent album has been nominated for a Grammy. With a mix of standards and original compositions and a great line-up of musicians we are in for a very enjoyable evening.

'Timeless, artless and utterly gorgeous' – *Time Out*

£18 £15 £8 F ends 9.30pm

Sponsored by **Music Sales**



8.00pm Corn Exchange

Fat Cat Comedy Club

Robin Ince has won a whole host of comedy awards, regularly appears on our TV screens and radios and is well known as the support act on Ricky Gervais's stand-up tours. He is joined on stage by George Egg, hailed as 'a Tommy Cooper for the twenty-first century', and your compère for the evening is the captivating and energetic John Gordillo.

£10 Tickets available on the door only

Presented in association with the Fat Cat Comedy Club



Monday 11 May



© Richard Haughton

1.00pm Corn Exchange **Jim Mullen Organ Trio** featuring **Stan Sulzmann**

Guitarist Jim Mullen returns to the Festival with his great trio plus special guest Stan Sulzmann on saxophone playing tracks from their recently released album.

£7 ends 2.00pm

7.30pm Hollywood Film Cinema World Cinema Series

The Kite Runner (15)

In a divided country on the verge of war, two childhood friends, Amir and Hassan, are about to be torn apart. It's a glorious afternoon in Kabul and the skies are bursting with the exhilarating joy of a kite-fighting tournament. But in the aftermath of the day's victory, one boy's fearful act of betrayal will mark their lives

for ever and set in motion an epic quest for redemption. Based on Khaled Hosseini's acclaimed and bestselling novel, this profoundly emotional tale was nominated for several awards in 2008.

£6 ends 9.45pm

7.30pm St Edmundsbury Cathedral **Philharmonia Orchestra**

Pekka Kuusisto *violin*
Benjamin Wallfisch *conductor*

A welcome return for the Philharmonia Orchestra with a programme that opens with Britten's *Fanfare for St Edmundsbury*, being performed 50 years after its first performance, and that includes a world premiere from Benjamin Wallfisch, who is also tonight's conductor.

Britten Fanfare for St Edmundsbury
Wallfisch New Work
Sibelius Violin Concerto
Dvořák New World Symphony

£28 £19 £13 F ends 9.30pm

Box Office: 01284 769505



Tuesday 12 May



© Hanya Chlala/ArenaPAL

1.00pm St Edmundsbury Cathedral

Piano 4 Hands

Piano 4 Hands has rapidly established a reputation as one of the leading piano duos of its generation, widely acclaimed in the UK and abroad. Joseph Tong and Waka Hasegawa are regular performers at London's Wigmore Hall and South Bank Centre and were prize winners at the 2003 Tokyo International Piano Duo Competition.

Schubert	Fantasie in F minor, D940
John McCabe	Upon entering a painting
Ravel	Rapsodie espagnole

£7 ends 2.00pm

Sponsored by **Music Sales**



7.30pm Theatre Royal

Zum

A brilliant and entertaining band that mixes the hot-blooded passion of Argentinian tango with the fire and brilliance of gypsy fiddle music, while also throwing in a healthy dose of celtic, salsa, bluegrass, klezmer, Arabic and calypso alongside 'Nuevo Tango' masterpieces by Astor Piazzolla. Great stuff.

£18 £15 £8 F ends 9.30pm

Sponsored by **Blueprint Cambridge Ltd**



www.buryfestival.co.uk



Wednesday 13 May



1.00pm St Mary's Church

Eden Stell Guitar Duo

This excellent duo's *Music for an Island* is a finely crafted and synchronised multimedia concert of music and images inspired by landscapes and locations from around the UK. The diverse programme takes us from the Orkney Isles to the seaside promenade of Eastbourne, visiting the Holy Island of Lindisfarne, leafy Sherwood Forest, May Hill, and the Beatles' Liverpool along the way.

£7 ends 2.00pm

2.00pm Ickworth House

Portrait Tour

Enjoy a guided tour around Ickworth's world-class art collection and discover the stories behind the portraits. Followed by tea and cake in the Blue Room with House Manager Neil Robinson.

£15 includes admission to the park
Booking essential ends 4.00pm

7.30pm Theatre Royal

Harlem Airshaft

Alan Barnes is a key figure on the British jazz scene and has won numerous awards including the prestigious BBC Jazz Instrumentalist of the Year award in 2001 and 2006. It is a delight to invite him back to the Festival with his new all-star octet playing new arrangements of Duke Ellington/Billy Strayhorn gems.

£18 £15 £8 F ends 9.30pm

7.30pm Angel Hotel Vaults

Entry by table reservation for dinner
Telephone 01284 753926

Jazz at the Angel

Dinner and jazz in the Angel Hotel Vaults



Box Office: 01284 769505





7.30pm Hollywood Film Cinema

World Cinema Series

The Baader Meinhof Complex (18)

Germany in the 1970s: murderous bomb attacks, the threat of terrorism and the fear of the enemy within are rocking the very foundations of the yet fragile German democracy. The radicalised children of the Nazi generation lead by Andreas Baader, Ulrike Meinhof and Gudrun Ensslin are fighting a violent war against what they perceive as the new face of fascism: American imperialism supported by the German establishment.

The film was nominated for the Best Foreign Language Film Award at the 2009 Golden Globes Ceremony and is a great addition to the recent new wave of German films.

£6 ends 10.00pm

bury bach choir

Philip Reed conductor

Saturday 28 March 2009 at 7.30pm
St Edmundsbury Cathedral

HAYDN

The Creation

Sena Larard soprano

Mark Le Brocq tenor

Graeme Danby bass

Bury Bach Choir and Orchestra

Saturday 13 June 2009 at 8.00pm
Holy Trinity Church, Long Melford

The Beauty of Bach

Nicki Kennedy soprano

James Bowman counter-tenor

Philip Salmon tenor

Gavin Carr baritone

Bury Bach Choir



Suffolk Baroque Players

BOOK NOW tickets from
Theatre Royal 01284 769505
and online

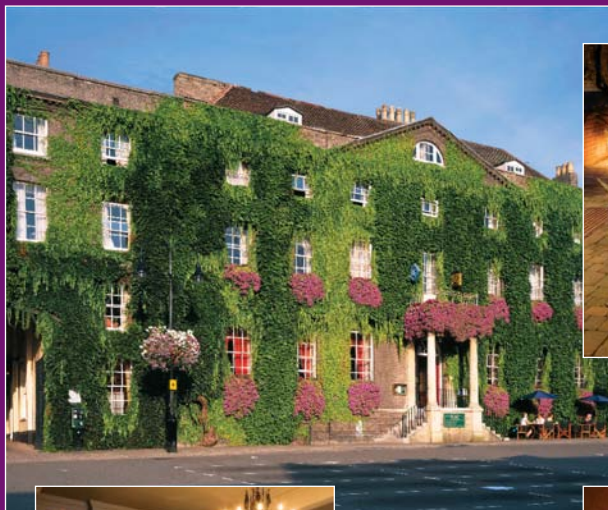
Find out more – go to
www.burybachchoir.co.uk



theangelhotel

AA 4 star hotel
2 AA Rosettes  

Angel Hill, Bury St Edmunds, Suffolk



2008, Best Large Hotel, East of England Awards
2008, Best Large Hotel in Suffolk

01284 714000

www.theangel.co.uk

Thursday 14 May



© Joe Bangay

© Nick Granito

1.00pm St Mary's Church

Royal Academy of Music String Orchestra

Every year we invite musicians from the Royal Academy of Music who consistently give us wonderful concerts. Today the string orchestra performs Mozart's Oboe Concerto in C, K314, and Tchaikovsky's much loved *Souvenir de Florence*.

£7 ends 2.00pm

5.30pm

Jazz Train



A trio of musicians in troubadour style hits some culinary high notes with smooth cocktail jazz in four leading eateries in one evening. To reserve a table, phone these numbers:

5.30 pm Ask 01284 723400

7.00 pm Café Rouge 01284 764477

8.10 pm Brasserie St Gerard 01284 756260

9.30 pm The Fox Inn 01284 705562

7.30pm St Mary's Church

Emma Johnson & Pascal Rogé

Emma Johnson is well known and loved by the Bury Festival audiences and she is joined by the internationally renowned pianist Pascal Rogé whose name is synonymous with the best playing of French repertory in the world today.

Weber	Sylvana Variations
Debussy	Rhapsodie
Brahms	Sonata in F minor, Op.120 No.1
Bernstein	Sonata
Stravinsky	3 Pieces for clarinet solo
Debussy	La Cathédrale engloutie
Copland	Nocturne
Milhaud	Scaramouche Suite

£18 £15 £8 F Half-price standby
ends 9.30pm

www.buryfestival.co.uk



Friday 15 May



1.00pm Corn Exchange

Chris Lee/Jenny Howe Quartet

Excellent jazz quartet playing reworked versions of classic pop/rock standards from the 1950s through to the 1980s.

'To recast well-known tunes in a new idiom with such convincing results takes talent and imagination. Beautifully sung and played.' – *Observer*

£7 ends 2.00pm

7.00pm Ickworth House

Book Tour

Join the House Manager on a tour of Ickworth's unique and diverse book collection spanning over 400 years of Hervey family reading.

£12 includes admission to the park
Booking essential ends 8.30pm

7.30pm Hollywood Film Cinema

World Cinema Series

The Counterfeiters (15)

Salomon Sorowitsch, king of counterfeiters, lives a mischievous life of cards, booze, and women in Berlin during the Nazi era until he is arrested and thrown into the Mauthausen concentration camp. *The Counterfeiters* is the true story of the largest counterfeiting operation in history, set up by the Nazis in 1936, and this film won the Best Foreign Language Film Award at the 2008 Oscars.

£6 ends 9.15pm

7.30pm Angel Hotel Vaults

Entry by table reservation for dinner
Telephone 01284 753926

Jazz at the Angel

Dinner and jazz in the Angel Hotel Vaults



Box Office: 01284 769505





7.30pm St Mary's Church

Mantra

Musical Conversations across the Indian Ocean

The Orlando Consort

Matthew Venner *alto* Mark Dobell, Angus Smith *tenors* Donald Greig *baritone*
with

Kuljit Bhamra *tabla, Indian harmonium* Jonathan Mayer *sitar* Shahid Khan *voice*

The inspiration for this new collaborative project is sublime Iberian and Indian music from the early 1500s. Portuguese missionaries and Goan Indians joined together in music as churches, built in the exotic land known as the 'Pearl of the Orient', resounded to the extraordinary blended sounds of Europe and Asia. These award-winning musicians re-create this historic cross-cultural encounter and apply their collective experiences to create a radical new dialogue for the 21st century.

£15 F ends 9.30pm

Mantra is presented by the Orlando Consort working in association with The National Centre for Early Music. This tour has been supported by Arts Council England and the PRS Foundation for New Music.



Saturday 16 May



© Anneliese Emmans Dean

10.00am Rougham Airfield

Suffolk Kite Festival

You may remember flying a kite as a child but this is something completely different. As well as seeing the current world champion in action you can also enjoy the Flying Squad who are the current European Team Champions (think Red Arrows display with kites), and the amazing Dark Star – a man who can fly 3 kites at once.

As well as watching the experts, you can also have a go yourself, or make your own kite and have it flown by and judged by the world champion himself. Throw in fairground rides, craft stalls and a special runway for the thrilling sport of power kiting with boards and buggies and it all adds up to a great day out.

£6 £4 (concessions), (**£4 £3** in advance).
Under-12s **free**

11.00am Ickworth House

Medieval Spectacular

An action-packed weekend of medieval splendour including demonstrations of archery, early cannon and battle tactics; the chance to enjoy music, song, dance and drama; and the thrill of a re-enactment based on the War of the Roses.

Adult **£6.40**, Child **£2.20**, Family **£15**
Members: Adult **£2**, Child **£1**, Family **£5**
Includes park and garden admission
Tickets available on the door only ends 4.00pm

2.00pm Theatre Royal

Buzzing!

Buzzing! is a multi-media poetry adventure that weaves live music, huge and glorious wildlife images and heaps of hilarious poems to celebrate the tiny world of garden creepy crawlies. Here be



Box Office: 01284 769505





bees, millipedes, flies, moths, butterflies, mites and beetles. Here be stories from a world that's outtasight. Meet Celestia, the hoverfly who can never quite make up her mind. Meet Fitz, the mayfly who is pressed for time. Meet Betty, the bluebottle who feels unloved . . .

£6 (**£3** accompanying adult) ends 3.00pm

7.30pm St Edmundsbury Cathedral

Black Dyke Band

The Black Dyke Band is not only the most famous band in the world but is also the most successful contesting band in the world, having won the British Open no fewer than 29 times and the National Championships 21 times, including the 2008 competition. No wonder then that it is such a delight to be welcoming the band back to this year's Festival.

£17 **£13** **F** **Half-price standby**
ends 9.30pm

7.30pm Hollywood Film Cinema

Talkies!

Debut screening of the first ever poetry video album. Don't Shoot The Poets presents *Talkies!* by Steve Tasane, one of the UK's most popular performance poets ('Poetry you can dance to' – *Independent*). Mixing hard-hitting social commentary with mind-boggling, tongue-twisting poetry, Steve will also be performing a live set prior to the screening.

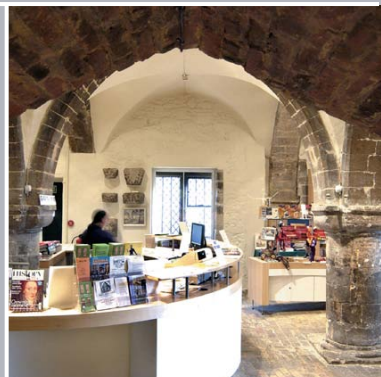
Also on the bill is Rachel Pantechnicon, often described as the love child Eddie Izzard and Pam Ayres never told us about ('Technicolour suburban entertainment' – John Hegley).

To sample Steve's poetry, and enjoy a sneak preview of the *Talkies!* films, visit www.stevetasane.com

£7 **F** ends 9.30pm



Sunday 17 May



10:00am Rougham Airfield
Suffolk Kite Festival

For details see 16 May.

10.30am Meet at the
Tourist Information Centre

**Walk: Ladies and
Gentlemen of the
Georgian Town**

In Georgian times, Bury St Edmunds enjoyed a period of prosperity and popularity. During the tour we will meet various people who lived in or visited the town. Among them are an 18th-century 'Fertility Expert', Daniel Defoe, who had firm opinions about Assemblies, and a prominent townsman who was summoned before the Privy Council to answer questions on religious tolerance.

£7 includes coffee and a pastry
ends 12.00pm at Moyses's Hall Museum

11.00am Ickworth House
**Ickworth's Medieval
Spectacular**

For details see 16 May.



3.00pm Moyses's Hall Museum
**Women In Late Stuart
& Georgian Suffolk
1660–1830**

Join Pat Murrell for a social-history lecture on women in their own right – from domestic drudge to genteel blue-stocking.

£5 £3 (Friends of Moyses's Hall)
Tickets from Moyses Hall Museum: 01284 706183

Supported and funded by
The Friends of Moyses's Hall



Box Office: 01284 769505





© Eric Richard

© Caroline Forbes

6pm St Edmundsbury Cathedral Cathedral Choir

The Cathedral Choir will be performing a programme that celebrates the music of Handel, Haydn, Purcell and Mendelssohn, all of whom have significant anniversaries in 2009.

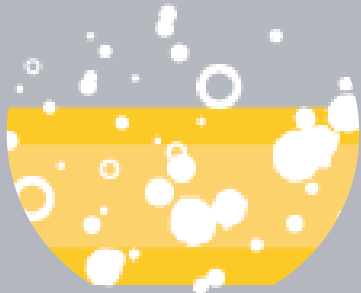
£8 F ends 7.00pm

7.30pm Theatre Royal Endellion Quartet with Wendy Cope

This superb string quartet celebrates its thirtieth anniversary this year and to mark the occasion has embarked on a number of exciting projects. One of these projects has been to ask the award-winning and popular poet Wendy Cope to write a series of poems that are portraits of archetypal audience members. Wendy Cope is a master at turning mundane emotions into witty but perceptive poems and these have been set to music by Roxanna Panufnik, one of the UK's most eminent young composers.

Haydn	Quartet in B flat, Op. 71 No. 1
Panufnik/Cope	The Audience
Beethoven	Quartet in F, Op. 59 No. 1

£18 £15 £8 F ends 9.30pm



BURY youth FESTIVAL 09

Bury Youth Festival is creating a new platform for young people in Bury to show how creative and talented we are! The festival is new for 2009 and hopes to promote a wide range of art and music activities across the town..



BurySOUND 2009 Launch Party

FRIDAY 8th MAY
THE LOUNGE, 2 HATTER STREET
19:30 AGES 13+ / £4



The Art of Urban Movement

SATURDAY 9th MAY
ANGEL HILL
14:00 - 18:00 / FREE



Street Sculptures

SATURDAY 9th MAY
ABBEY GARDENS, ANGEL HILL
FREE



AMPLITUDE - make your music heard

WEDNESDAY 13th / 20th MAY
REHEARSAL ROOMS, ST. ANDREWS ST. SOUTH
18:30 - 20:30 / £5



Make an exhibition of yourself

FRIDAY 8th MAY
THE ATHENAEUM, ANGEL HILL
FREE



Photography Competition

FRIDAY 8th MAY / SUNDAY 24th MAY
THE LOUNGE, 2 HATTER STREET
FREE



For detailed information regarding any of the events listed visit...

www.buryyouthfestival.co.uk

For more information email: info@buryyouthfestival.co.uk Telephone: 01284 757077

Bury Youth Festival is organised and promoted by St Edmundsbury Borough Council. Community Development, West Suffolk House, Western Way IP33 3YU.

Monday 18 May



1.00pm Corn Exchange

Fiona Kerr and the Richard Fairbrass Trio

Described in *Straight No Chaser* as having 'a voice as deep and smooth as black molasses dripping off a spoon', Fiona Kerr is joined by the Richard Fairbrass Trio to treat us to a lunch time of Bossa Nova paying homage to the songwriting of Antonio Carlos Jobim.

£7 ends 2.00pm

8.00pm West Wing at Ickworth

Catrin Finch – Goldberg

Bach's Goldberg Variations represents a formidable challenge even for keyboard players, and has never been played previously on the harp. It has taken a year for Catrin to complete the challenge of transcribing and recording this work, which has just been released by Deutsche Grammophon. Catrin was the Royal Harpist to HRH The Prince of Wales from 2000 to 2004 and has been described as 'The Queen of Harps', delighting audiences all over the world with her playing.

'Finch can do almost anything on the harp, and then some' – *Washington Post*

£15 F ends 9.10pm

Call 01284 735957 to book pre-concert dinner or post-concert buffet at the West Wing at Ickworth.



Tuesday 19 May



© Picturehouse

1.00pm Unitarian Meeting House

Syrinx Flute Quintet

Flutes of all shapes and sizes here today as the Syrinx Flute Quintet makes its first visit to the Festival. An enjoyable and mixed programme will include a tango for bass flute.

£7 ends 2.00pm

Supported by the **Unitarian Trustees**

1.10pm Theatre Royal

Christopher Langdown

A graduate of the Royal College of Music, Christopher Langdown is an internationally renowned pianist described in the press as 'brilliant' and 'truly memorable'.

£7 Lunch & Concert ticket combined **£11**

7.30pm Hollywood Film Cinema

World Cinema Series

La Vie en Rose (12A)

From childhood poverty to glory and from triumph to despair, this film chronicles the extraordinary life of French chanteuse Edith Piaf, and won a host of awards in 2008.

"They can reserve a seat at the Oscars for Marion Cotillard who is breathtaking . . . her interpretation of the "little sparrow" is a tour de force" – *Observer*

£6 ends 9.45pm



Box Office: 01284 769505





© Friedl Jankoschek

7.30pm Theatre Royal

An Audience with Paddy Ashdown

In his own words: 'I have led a most fortunate life. I was a soldier at the end of the golden age of imperial soldiering; a politician while politics was still a calling rather than a profession and an international peace-builder backed by Western power, before Iraq and Afghanistan drained the West of both influence and morality.' As you can imagine, there are some stories to tell. Come and listen.

£8-£22



7.30pm Athenaeum

Haydn Trio Eisenstadt

The Haydn Trio Eisenstadt is one of Austria's leading chamber music ensembles and to celebrate Haydn's bicentenary they have commissioned 18 composers from around the world to write a piano trio dedicated to Franz Josef Haydn. This concert will feature the UK premieres of works by John Woolrich, an important figure in British musical life, and South Africa's Bongani Ndodana-Breen, whose music with its blend of African and Classical styles music has been receiving rave reviews.

Haydn Trio in C, H.XV:27
Bongani Ndodana-Breen Two Nguni Dances
John Woolrich The Night will not draw on
Schubert Trio in E flat, D. 929

£15 F ends 9.30pm

This concert is in co-operation with Haydn Festival Eisenstadt/Haydn2009 with the kind support of the Austrian Cultural Forum in London.



Wednesday 20 May



© Hanya Chlala

1.00pm Athenaeum

O Duo

O Duo's repertoire spans more than 300 years and is a mix of popular classics and accessible contemporary music played on two marimbas, vibraphone and a huge array of percussion.

Performing from memory, Owen and Oliver's performances are hugely popular with both young and old, as they communicate with immediacy and brilliance. Their programme will include works by Bach, Chopin and Dave Brubeck, alongside Minoru Miki's dazzlingly virtuosic *Marimba Spiritual*.

'Phenomenal artistry . . . Brimming with style and panache' – *Daily Telegraph*

£7 ends 2.00pm



7.00pm St Edmundsbury Cathedral

Carlo Curley

Carlo Curley is one of the world's foremost concert organists and he will be playing a selection of pieces chosen specifically for the organ of St Edmundsbury Cathedral.

£8 F ends 8.15pm

7.00pm Ickworth House

Behind the Scenes Tour

Have you ever wondered what goes on at Ickworth when the doors are locked and the shutters are closed? Why not take a glimpse of what life is like for our house staff tending to the huge demands of the Rotunda and its treasures.

£12 includes admission to the park
Booking essential ends 8.30pm



Box Office: 01284 769505





7.30pm Theatre Royal

Three Men in a Boat

by Jerome K. Jerome
in a new adaptation by Daniel O'Brien
directed by Abigail Anderson
designed by Libby Watson

Make new friends or re-acquaint yourselves with old ones, in the Theatre Royal's charming adaptation of Jerome K. Jerome's comedy classic, *Three Men in a Boat*. Enjoy the lazy pace of Victorian England, sculling down the Thames with J, George and Harris – to say nothing of their dog, Montmorency. Share in their (mis)adventures, discover the mysteries of Irish stew, endure Harris's renditions of Gilbert and Sullivan and keep well out the way when they try to open a tin of pineapple! Join us for this fresh and witty new take on the much loved portrait of the English at play.

£7-£23.50

7.30pm Angel Hotel Vaults

Entry by table reservation for dinner
Telephone 01284 753926

Jazz at the Angel

Dinner and jazz in the Angel Hotel Vaults



Wednesday 20 May



7.30pm West Wing, Ickworth

Matthew Sharp and Johnny's Midnight Goggles

A double-bill of musical and theatrical genius

Matthew Sharp has performed worldwide as a solo cellist, singer and theatre performer and has had several pieces of music composed for him by some of the country's top composers. The first half of the concert sees him performing Jason Yarde's *Soliloquies of Solace*, a Bach Cello Suite and an improvised Tango while the second half is devoted to *Johnny's Midnight Goggles* – a one-man operatic thriller:

Johnny's been kidnapped, the Black Camel of Takrilakastan has shown up and a mysterious pair of goggles has opened a portal to another world. Midnight is fast approaching and the chase is on to rescue Johnny.

Johnny's Midnight Goggles is a mind- and genre-melting explosion of story-telling, ravishing singing, virtuoso cello-playing and sonic wizardry – Tim Burton meets John Adams, Arnold Schwarzenegger meets Edith Piaf, Philip Pullman meets Paganini.

Witty, nail-biting and entrancing music theatre with goggles on!

'In every festival there is the "one", the Holy Grail, the great find of the whole season and in the case of this year's festival it is *Johnny's Midnight Goggles* . . . buy, steal, beg and queue to get a ticket to this show!' – *Brighton Magazine*

£12 F Half-price standby ends 9.30pm

Box Office: 01284 769505





8.00pm Cornhill Walk
Shopping Centre

David Rees Williams Trio

After this excellent jazz trio had played their arrangement of 'When I'm laid in Earth' by Purcell on BBC Radio 3's *In Tune*, the BBC was overwhelmed with many thousands of emails to find out where to buy this amazing music. The BBC recorded the trio and quickly issued *Hidden Colours* on the *Late Junction's* own label. The Trio has gone on to produce more albums to great acclaim and their live concerts have thrilled audiences all over the country.

'A delight' – *Independent*

£15 F ends 10.00pm

Sponsored by
Cornhill Walk Shopping Centre



family run gastro pub
restaurant & hotel
*two minutes walk from the
abbey gardens and cathedral*

- fresh seasonal produce
- relaxed informal dining seven days a week
- six large luxury rooms in converted barn
- live jazz sunday evenings



the fox inn, 1 Eastgate Street
Bury St Edmunds, Suffolk IP33 1XX
01284 70 55 62
info@thefoxinnbury.co.uk
www.thefoxinnbury.co.uk



Thursday 21 May



1.00pm Unitarian Meeting House

Oboe Band

The Oboe Band brings together four excellent young musicians into the only professional ensemble of its kind in the UK and was formed to revive the once hugely popular ensemble of Baroque oboes and bassoons. Today's concert explores a programme of works from the seventeenth to the twenty-first century, including *Oboes* written last year for Baroque Oboe Band by Blai Soler.

£7 ends 2.00pm

Supported by the **Unitarian Trustees**

2.00/7.30pm Theatre Royal

Three Men in a Boat

For details see 20 May.

7.00pm Ickworth House

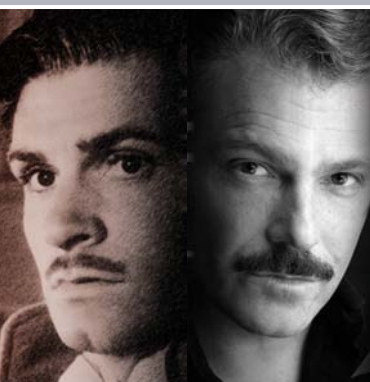
Behind The Scenes Tour

For details see 20 May.



Box Office: 01284 769505





© Jorge Socca

8.00pm Athenaeum

Cry God for Larry!

A Celebration of Laurence Olivier and William Shakespeare

As a young actor, Bruce Morrison was privileged to work with Sir Laurence Olivier in his last role. Bruce returns following his popular and enjoyable performance last year with a new show to mark the 20th anniversary of Sir Laurence's death. In words and music, Bruce recalls that meeting, and relives some of the magnificent Shakespearean roles that Olivier brought unforgettably to life – Hamlet, Macbeth, Richard III, Othello, Romeo, Mercutio, Lear and Henry V.

£12 F ends 9.15pm



8.00pm Corn Exchange

Vocal Sampling

Close your eyes and there is a full Cuban salsa band playing, with hot horns, pounding percussion and great guitar solos . . . open your eyes and there are just six sharp-suited guys sashaying away using nothing but their voices. It's brilliant – don't miss it!

'Musical magic. Vocal Sampling must rank as one of the most extraordinary groups in the world . . . So effective is it that initially you think they must be using backing tapes, or that the real musicians are hidden offstage. They are not, and even the brass and flute parts are created only by their six voices. Their timing was impeccable, their presentation theatrical and their repertoire imaginative.' – *The Times*

£17 F ends 10.00pm



Friday 22 May



1.00pm Corn Exchange

Allen Beechey's Bright Stars of Jazz

This swinging seven-piece outfit takes inspiration from the good-time, hard-driving jazz from the 1930s onwards. This band put on such a good gig for us last year that we just had to invite them back for another lunchtime of New Orleans jazz and swing.

£7 ends 2.00pm

7.00pm Ickworth House

Italianate Tour

Enjoy an evening of discoveries on a tour of Ickworth House, exploring its Italian connections and collections.

£12 includes admission to the park
Booking essential ends 8.30pm

7.30pm Theatre Royal

Three Men in a Boat

For details see 20 May.

7.30pm Angel Hotel Vaults

Entry by table reservation for dinner
Telephone 01284 753926

Jazz at the Angel

Dinner and jazz in the Angel Hotel Vaults



Box Office: 01284 769505





Festival in the Gardens in partnership with **BBC SUFFOLK**

7.30pm Abbey Gardens

70s and 80s Night

Dig out your boob tubes and cover yourselves in glitter because the party starts here! The Secret Police and WhamDuran will get things off to a great start, then Car Wash, with their 70s disco set, will make sure that everyone is up and dancing for the rest of the evening.

£18 £9 under-12s (increases to **£20, £10** from 8 May, inc. reservations) **F** ends 10.30pm
No seating provided No dogs, tables, barbecues or naked flames
Event entrance in Mustow Street Gates open at 6.30pm



BBC SUFFOLK

Always fresh-always filling

Weekday mornings from 0630



Mark Murphy

103.9 FM | 104.6 FM | bbc.co.uk/suffolk

FINE MUSIC IN THE HEART OF THE SUFFOLK COUNTRYSIDE

INTERNATIONAL
SUMMER
Music
Blackthorpe Barn

Fri 10 - Sun 19 July

including

Belcea Quartet

Morgan Szymanski *guitar*

Maxim Rysanov *viola*

Llyr Williams *piano*

Razumovsky Ensemble

Free brochure 01359 270091

events@blackthorpebarn.com

Tickets from £12

Box Office 01284 769505

or book on-line



The South & Heart of Suffolk
Walking Festival
9-25 May 2009

Over 60 guided walks through beautiful
Suffolk countryside and villages.

www.southandheartofsuffolk.org.uk

Or call for a brochure: 01449 676800/01787 248207

blackthorpebarn.com

Rougham, east of Bury St Edmunds, Suffolk. Junction 45 / A14

Saturday 23 May



Festival in the Gardens in partnership with **BBC SUFFOLK**

7.30pm Abbey Gardens

Peatbog Faeries & Terrafolk

This is going to be so good! Past winners at the BBC World Music Awards, Terrafolk are flying in from Slovenia to give us a high-energy set; a mind-bogglingly eclectic mix that includes folk styles as diverse as Klezmer, Gypsy, Irish, Slovenian and Mexican music, but also pop, rock and classical. With Terrafolk, you never know what to expect, but you'll love it anyway. Great stuff and very entertaining.

This will be followed by a brilliant show from the Peatbog Faeries who bring their own brand of Celtic grooves to Bury St Edmunds after being such a success at the 2008 Cambridge Folk Festival. This is high-octane Celtic dance music so be prepared to dance! Add in a set from Bury-based Ivan Wilson, winner of the 2008 Songwriting Competition held at the Masons Arms, as well as a performance from the winner of this year's competition, and this is going to be a great night out.

£18 £9 under 12s (increases to **£20, £10** from 8 May, inc. reservations) **F** ends 10.30pm
No seating provided No dogs, tables, barbecues or naked flames
Event entrance in Mustow Street Gates open at 6.30pm
For more details about the Songwriting Competition visit:
www.myspace.com/masonsarmslivemicacousticnight

2.00pm/7.30pm Theatre Royal

Three Men in a Boat

For details see 20 May.

www.buryfestival.co.uk



Sunday 24 May



10.30am Meet at the Tourist Information Centre

Walk: Science and Medicine

Bury is not famous for its scientists, but a doctor from the town became one of England's most versatile and accomplished researchers. Despite his considerable commercial achievements he is now forgotten. Come and learn about him; the monks and their herbal remedies; why Greene King is carbon neutral and why the Cathedral Tower was built with medieval mortar. This walk will give you a new slant on familiar buildings, streets and passages.

£7 includes coffee and a pastry
ends 12.00pm at Moyses's Hall Museum

10.00am Buttermarket/Cornhill

Bury St Edmunds Flower and Continental Market

This popular annual event promises a host of flowers, plants, bulbs and seedlings, gardening equipment as well as the gastronomic delights on offer at the Continental Market.

Free event ends 4pm
Continues on Monday 25 May

11.00am Ickworth House

Hanging Basket Workshop

For details see 10 May.



Box Office: 01284 769505





Festival in the Gardens in partnership with



8pm Abbey Gardens

Classical Proms Night

Featuring soprano Rebecca Bottone and the Royal Philharmonic Concert Orchestra conducted by Tim Redmond, this is sure to be a popular way to round off the Festival. All the proms favourites will be played and the evening will end with a fantastic firework display.

£22 £12 under-12s (increases to **£25, £15** from 8 May, inc. reservations) **F** ends 10.15pm
No seating provided No dogs, tables, barbecues or naked flames
Event entrance in Mustow Street Gates open at 7.00pm

Sponsored by



and



Coming soon!

CHILDREN'S FESTIVAL



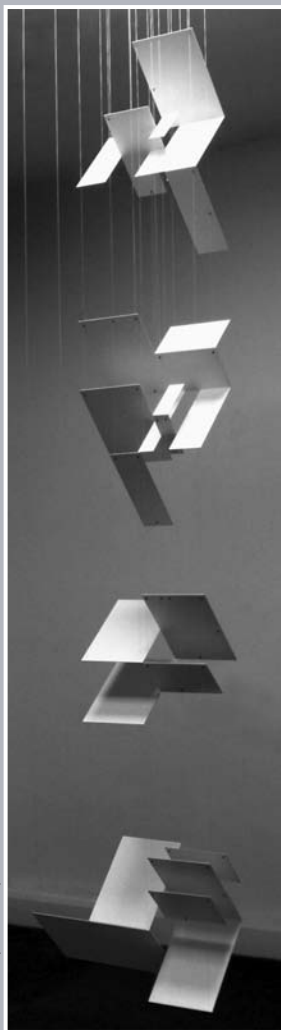
Tuesday 11 August – Abbey Gardens
Wednesday 12 August – Haverhill Recreation Ground

Music, art, dance, magic shows, sport, story-telling
and much, much more . . .

Free entry: 10am – 4pm
For more information call 01284 757067
or email ben.smith@stedsbcbbc.gov.uk



Exhibitions



© Anthony Elliott *Hymn*

Bury St Edmunds Art Gallery
The Market Cross, Cornhill 01284 762081
www.burystedmundsartgallery.org
8 May to 20 June:
Tuesday–Saturday 10.30am–5pm

Interplay

Artists' Notes on Classical Music

Interplay considers the structures, relationships and tools of classical music in works by contemporary artists. In particular, it looks at the hierarchy of the orchestra and notation, the quest for perfection, the formal relationship between the audience and performers as well as the values attributed to music and its instruments.

In this exhibition, Cornelia Parker explores the form, volume and prestige of instruments by exhibiting a pair of suspended brass instruments, only one has been flattened by a steamroller – removing its functionality as an instrument but elevating it to the status of an art object. Aileen Campbell's *Rehearsal Room* is a video showing a voice work highlighting not only gender stereotypes in singing but also the rigours of practice and the hidden barriers between performer and audience. Whilst Anthony Elliott transforms musical notation into a sculptural form with Constructivist-inspired staves and forms cascading through space rather than time. Terry Smith's *Broken Voices* is an ongoing sound and video work developed from a collaboration with the singer Linda Hirst and Ian Dearden. It uses a Monteverdi score as the starting point to develop performances through improvisation, discussion and rehearsal allowing insight into what is behind a performance and becoming a performance in its own right.

Through their works, the artists playfully highlight aspects of classical music that oscillate between the genesis, process and performance, showing the unseen and questioning preconceptions of the genre and its relation to other genres of music and art.

Free admission

Box Office: 01284 769505





© Terry Smith: from *Broken Voices*



© Cornelia Parker *Composition with horns* 2003
Photo the artist, courtesy private collection USA



© Graham Portlock (detail)

St John's Church

9–23 May: Monday–Saturday 10am–5pm;
Sundays: 2–5pm

Good Grief – Bald Statements

A moving exhibition that features a series of alabaster sculptures by Jean Parker illustrating the artist's journey through cancer.

Presented by Churches Together to mark the 25th anniversary of St Nicholas Hospice

The Cathedral Gallery

21–27 May: 10am–4.30pm

Bury Exposed

An exhibition of atmospheric art photographs by Graham Portlock, including many new interpretations of the town's iconic architecture.

Moyses's Hall Museum

Cornhill 01284 706183 Daily 10am–5pm

Women by Women

A medieval building with local-history and changing collections in the heart of Bury St Edmunds. The current exhibition looks at works by local female artists.

Saturday 16 May

Living History Event linked with the new *Market* exhibition

Saturday 23/Sunday 24 May

1am–4pm

Artist in Residence

Join Gabrielle Stoddard and have your portrait drawn or painted sitting in the galleries.

£10 per portrait (charcoal) **£20** (acrylic)
No booking required



Booking Information

Unless otherwise stated, bookings for all events are being handled by the Theatre Royal Box Office. We regret that tickets can not be exchanged nor money refunded. Bury St Edmunds Festival reserves the right to change or cancel the advertised programme. Details are correct at the time of publication.

Standby

Unsold tickets for standby events will be available at half-price to under-17-year-olds, full-time students, Registered Unemployed, those on Registered State Benefit, Registered Disabled and people over 60 from 10 am on the day of performance. Only one concession may apply to any ticket. One ticket per person. Proof of eligibility will be required.

Special Offers

There are a number of special offers. All offers are limited and subject to availability. Discounts apply only to full-price tickets booked in advance and are not available with any other discounts and concessions.

Festival Friends – Join the Festival Friends and save money on a range of events. £2 off the cost of up to two tickets in top two price bands. Look out for events marked **F**. Phone 01284 757062 to join the Friends.

Lunchtime Special – Book for four lunchtime events and pay for only three.

Abbey Gardens Specials – Book for all 3 nights in the Abbey Gardens and receive 20% off the price of each ticket. Family tickets are available for the Abbey Gardens gigs to groups of four, where at least two members of the party are children (under 16). Receive 20% off the cost of each ticket.

Vocal Special – Book top price tickets for each of The Sixteen on Saturday 9 May, Mantra on Friday 15 May and Vocal Sampling on Thursday 21 May and save 20% off the cost of each ticket.

World Cinema Special – Buy tickets for all 4 screenings and receive £1 off the price of each film.

Booking Dates

Festival Friends booking opens
Monday 2 March

General booking opens
Monday 9 March

Festival in the Gardens booking opens
Monday 23 February

Box Office

Festival Box Office
6 Westgate Street
Bury St Edmunds
Suffolk IP33 1QR

Telephone 01284 769505

Email booking@theatreroyal.org

Website www.theatreroyal.org

Box Office Opening Hours

Monday–Saturday 10am – 6pm

Group Bookings

Buy ten or more tickets for any event and save £1 per ticket.

Information

Latecomers will be admitted at the earliest suitable pause in the programme.

Booking Form

Date	Event	Time	Price	No. of Tickets	Total

Subtotal

£1.00 postage (or enclose SAE)

Total

Are you a Festival Friend? Tick for 'Yes'

Are you a Theatre Royal Friend?

I enclose a cheque made payable to Theatre Royal

Please charge my American Express/Diners Club/Mastercard/Switch/Visa

--	--	--	--	--	--	--	--	--	--	--	--	--	--	--	--	--	--	--	--	--	--	--	--	--	--	--

Expiry Date (Issue No. Switch only) _____

Card Security Code _____

Signature _____

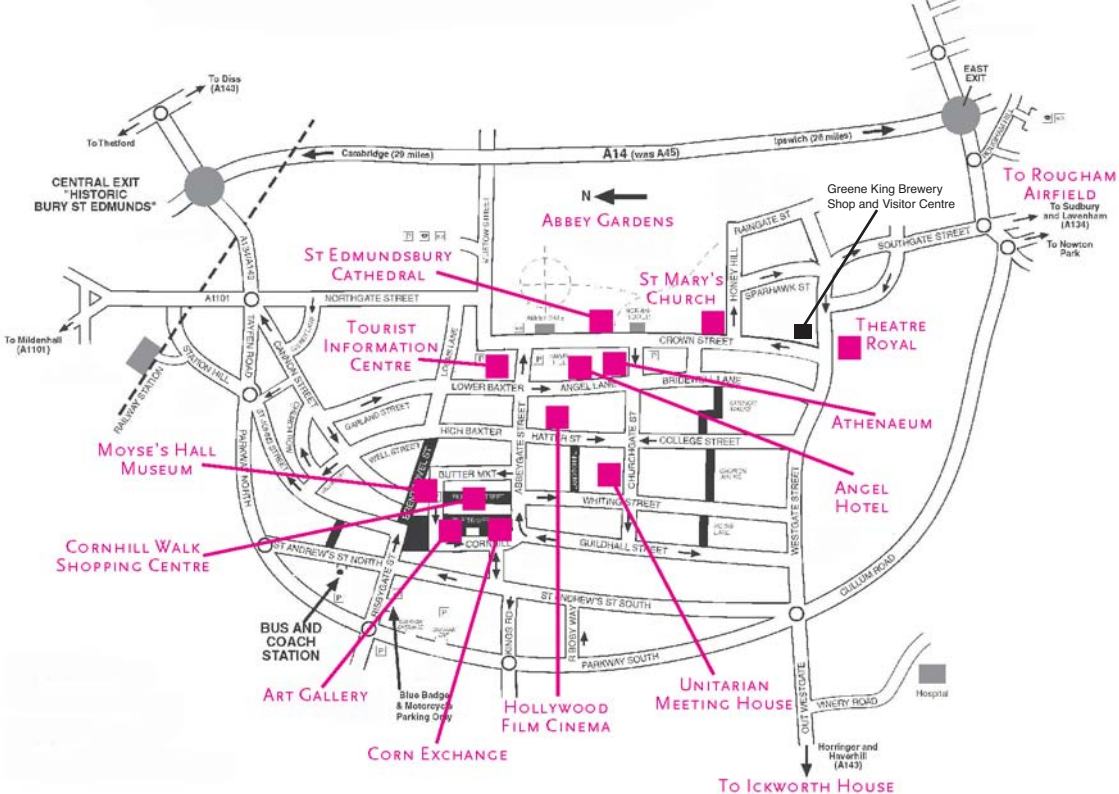
Last 3 digits on the back of the card
(or 4-digit code on the front for Amex)

Name _____

Address _____

Postcode _____

Daytime Tel. _____ Evening Tel. _____



Acknowledgements

Concerts in St Edmundsbury Cathedral are given by kind permission of the Dean and Chapter. The concerts in St Mary's Church are given by kind permission of the Vicar and Churchwardens.

Brochure designed by
 Mono Industries – www.monoindustries.co.uk
and prepared by Agnesi Text, Hadleigh
Brochure printed by Call Printers
Steinway pianos supplied and maintained by
 Andrew Giller

Sponsors and Supporters






Bury Free Press




EAST ANGLIAN
EAST ANGLIAN DAILY TIMES
SUFFOLK



The Music Sales Group






Box Office: 01284 769505

Hearing Aids Are Ageless...



Making yourself feel and look younger, includes your hearing too!

The Hearing Care Centre Ltd
*Multi-Award Winning, Independent & Private
Hearing Care in Bury St Edmunds*

**Mount Farm GP Surgery,
Lawson Place,
Bury St Edmunds**

*"As independent hearing aid specialists we
have access to the best hearing aid
technology and we are committed to
providing our patients with the best
customer service and aftercare available."*

**Freephone 0800 0962637
now for your appointment**



The Hearing Care Centre Ltd.

5 High Street, Ipswich, IP1 3JZ

Tel: (01473) 230330 www.hearingcarecentre.co.uk

Also at GP Surgeries and Health Centres in: Botesdale,
Bury St Edmunds, Eye, Felixstowe, Framlingham, Hadleigh,
Halesworth, Needham Market, Stowmarket & Woodbridge

The Hearing Care Centre are proud sponsors of the Bury Festival 2009



Karen Finch
RHAD FSHAA FRSA