



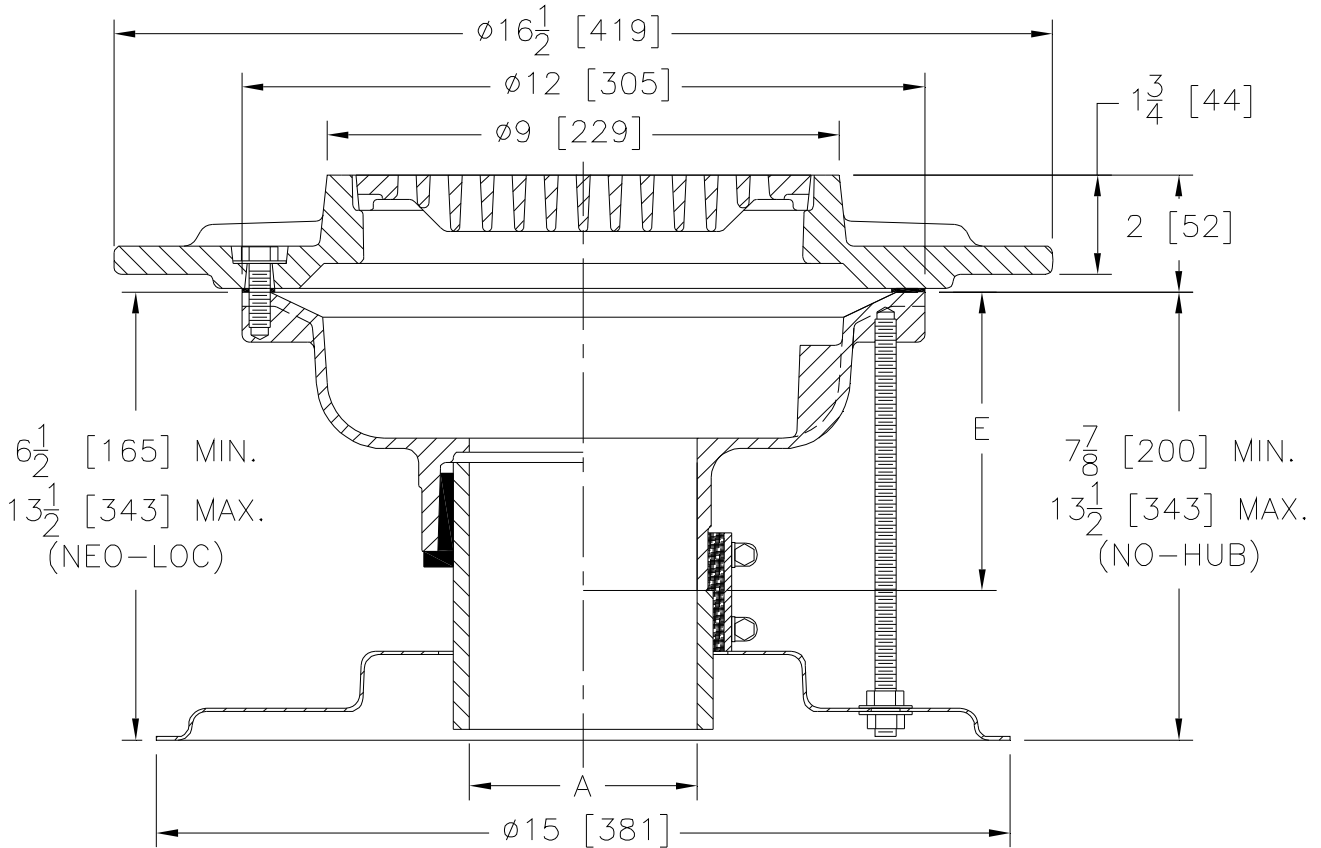
Z533-SA

SPECIFICATION SHEET

9 [229] DIAMETER HEAVY-DUTY PARKING DECK DRAIN WITH SUPPORT FLANGE AND Z1036 INSTALLATION STABILIZER

TAG _____

Dimensional Data (inches and [mm]) are Subject to Manufacturing Tolerances and Change Without Notice



A- Pipe Size In.	Approx. Wt. Lbs. [kg]	Grate Open Area Sq. In. [cm ²]
2-3-4 [51-76-102]	50 [23]	16 [103]

ENGINEERING SPECIFICATION: ZURN Z533-SA
9 [229] Diameter Parking Deck Drain, Dura-Coated cast iron body with bottom outlet, heavy-duty gasketed drain support flange, with heavy-duty duresist slotted grate, and Z1036 floor drain installation stabilizer.

OPTIONS (Check/specify appropriate options)

PIPE SIZE

2 thru 4 [51 thru 102]
2 thru 4 [51 thru 102]

(Specify size/type) **OUTLET**

_____ NH No-Hub
_____ NL Neo-Loc

'E' BODY HT. DIM.

5 1/4 [133]
4 9/16 [116]

PREFIXES

_____ Z D.C.C.I. Body and Top*
_____ ZB D.C.C.I. Body with Polished Bronze Top (Add 3/16 [5] to 2 [51] Dim.)
_____ ZN D.C.C.I. Body with Polished Nickel Bronze Top (Add 3/16 [5] to 2 [51] Dim.)

SUFFIXES

_____ -G Galvanized Cast Iron
_____ -S Secondary Strainer
_____ -TC Neo-Loc Test Cap Gasket (2 [51]-4 [102] NL Bottom Outlet Only)
_____ -TS Top Secured with Slotted Screws
_____ -VP Vandal-Proof Secured Top
_____ -Y Sediment Bucket

*REGULARLY FURNISHED UNLESS OTHERWISE SPECIFIED

REV.	DATE: 6/10/08	C.N. NO. 98610
DWG. NO. 83795	PRODUCT NO. Z533-SA	