



APPLICATIONS

- Checks
- Deposit Tickets
- Invoices
- Work Orders
- Oil Change
- Purchase Agreements
- Buyer's Guides
- Time Cards
- Job Tickets
- Deal Recap
- Service Books
- Weekly Service
- Appointment Pads
- Estimate and Repair Forms
- Smog and Emission
- Customer Follow-up
- Marine and Small Engine
- Odometer Disclosure Forms
- Heating & Air Conditioning
- Customer Work Sheets
- Certificate of Title

TARGET AUDIENCES

- Tire Service Centers
- Inspection Stations
- Automotive Parts Stores
- Glass & Windshield Repair
- Automotive Repair Shops
- Towing Services
- Automotive Dealerships

DECISION MAKERS

- Owners
- General Managers
- Office Managers
- Service Department Managers
- Purchasing Managers
- Marketing
- IT Director/Managers

The automotive industry remains a significant contributor to the economy and has begun to climb back from the difficult challenges they have faced in recent years. Recent events have changed the landscape of the market, but they have also created large amounts of opportunities to capitalize on its recent transformation.

It is not just selling new or used cars to consumers. The services required to maintain and distribute cars after the car's initial sale are part of the \$257 billion automotive after-market. They include:

- Car Repair and Maintenance
- Oil Change and Lubrication
- Body Shops
- Transmissions

As the market matures, there will be a demand for services from businesses that understand how to cater to this industry.

At Wise, it's our focus to scan the horizon, identifying important trends and opportunities to give your company the edge. We not only offer the highest quality products and services, we also provide the best customized solutions anywhere.

Let us help make your company more competitive in the automotive forms market. Contact us at one of our five manufacturing locations to find out how Wise can help you stay ahead!



GEORGIA
(888) 815-9473

INDIANA
(888) 817-9473

MAINE
(800) 866-6560

PENNSYLVANIA
(888) 813-9473

SOUTH CAROLINA
(800) 445-2264

Selling Forms for the Automotive Market

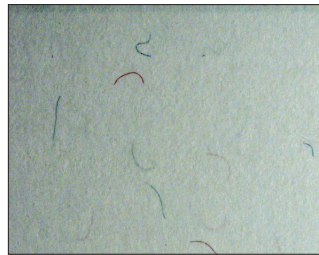
SECURITY FEATURES

Thousands of companies and individuals have access to generic checks or documents leaving them vulnerable to criminals who can easily replicate or alter them. The solution! Layer your forms and checks with a variety of security features to help combat and protect against fraudulent activities. We can customize your forms and checks with all the features you want!



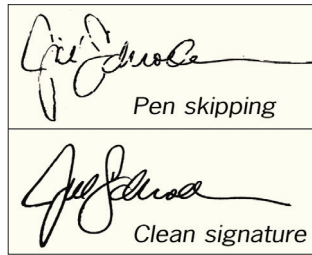
ARTIFICIAL WATERMARK

This technique creates a subtle reflective pattern visible when viewed at different angles. The image can't be scanned or copied, or reproduced with digital printers.



VISIBLE FIBERS

Red and blue fibers are randomly embedded into the paper on both sides, making paper stock duplications difficult.



ENDORSABLE CB™

Unique coating on the CB side that prevents pen skipping problems common with carbonless brands.



VOID PANTOGRAPHS

When an attempt to photocopy or scan is made, the "VOID" will show up on the copied or scanned check. This process is effective against most black and white and color copiers.



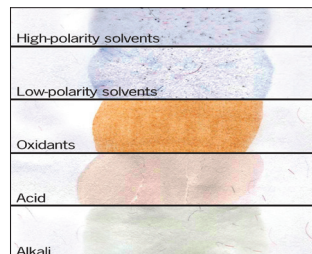
TRUE FOURDRINIER WATERMARKS

A true watermark shows a negative image in reflected light and a positive image in transmitted light; virtually impossible to reproduce by fraudulent means.



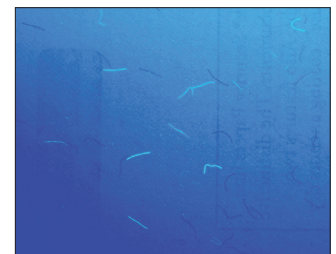
TONERFUSE® II COATINGS

To protect documents that include toner-printing, these coatings bond the toner to the paper fibers. Now nearly twice as effective as other brands. Several coatings are available to meet the needs of specific applications.



PRIMARY INDICATOR STAINS

These measures protect against alteration by changing color when exposed to agents such as bleaches, solvents, acids or bases. Provide easily recognizable signs of attempted alteration.



INVISIBLE FLUORESCENT FIBERS

Visible only under UV light; confirm a document's authenticity because they can't be photocopied or scanned.



GEORGIA
(888) 815-9473

INDIANA
(888) 817-9473

MAINE
(800) 866-6560

PENNSYLVANIA
(888) 813-9473

SOUTH CAROLINA
(800) 445-2264