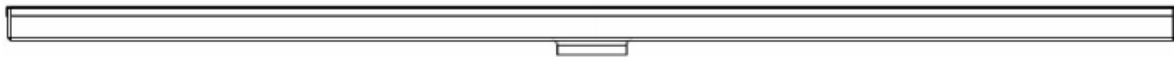
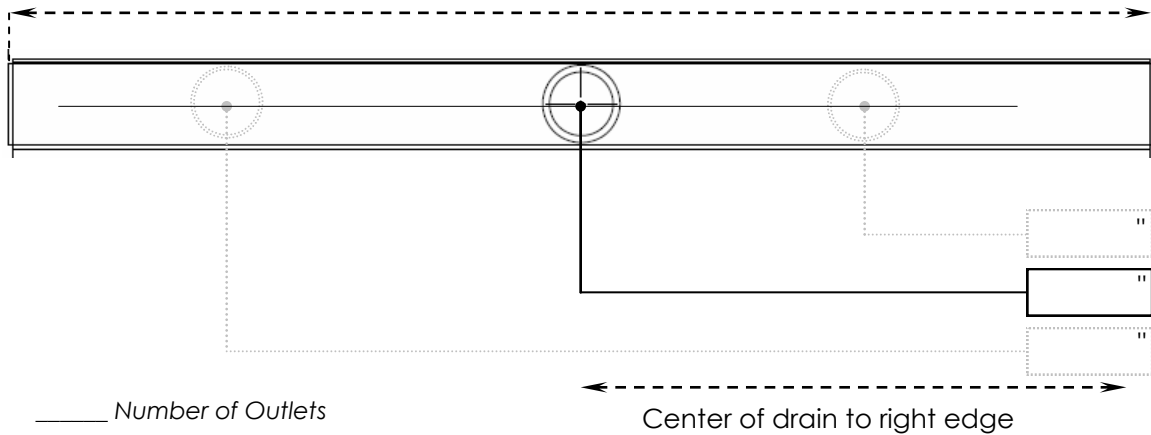


Overall Length of Drain\* \_\_\_\_\_"



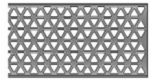
### Grate choice:



**FXED 65** \_\_\_\_\_



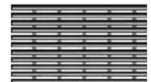
**FXDG 65** \_\_\_\_\_



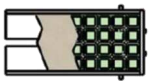
**FXMN 65** \_\_\_\_\_



**FXAS 65** \_\_\_\_\_



**FXAS 125** \_\_\_\_\_



**FXTIF 65** \_\_\_\_\_

### Grate finish:

**Satin Stainless** \_\_\_\_\_

**Polished Stainless** \_\_\_\_\_

**Oil Rubbed Bronze** \_\_\_\_\_

**Matte White** \_\_\_\_\_

**Matte Black** \_\_\_\_\_

**RUSH: YES** \_\_\_\_\_ **NO** \_\_\_\_\_

Rush applicable to only length and outlet modifications in Satin Stainless and Polished Stainless.

Rush charge applied per set-up. Turnaround is 5 business days, plus packaging and shipping.

Job Name: \_\_\_\_\_ Location: \_\_\_\_\_

Customer: \_\_\_\_\_ Purchase Order: \_\_\_\_\_

Approved by: \_\_\_\_\_ Date: \_\_\_\_\_

\*Overall length is the outside channel dimension. Grate will be 1/8" shorter for removal.  
See standard FX specifications for other dimensions.

