



# alzheimer's association®



To meet the heightened demand for our services, the Houston and Southeast Texas Chapter recently acquired and renovated a building to serve as the Chapter's permanent headquarters. The move-in date is set for early 2014.

The new headquarters, located at 6055 S. Loop East, is designed around a common theme of supporting individuals with dementia and those who care for them.

## *The Gift of Giving*

With this expansion comes an array of possibilities, and a once-in-a-lifetime opportunity to recognize donors who wish to honor and pay tribute to someone special.

This holiday season please consider one of our naming opportunities as a special tribute to someone you love. For \$25,000 you can honor and commemorate a loved one with Alzheimer's disease or show appreciation to an extraordinary caregiver by claiming a personal space in the heart of the Chapter's new building.

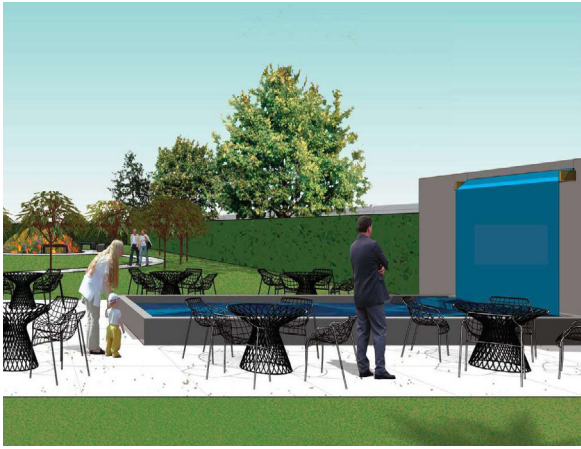
Help kick start the dedication initiative and share the gift of giving this holiday season!

For more information, contact Alexis Eaton, Development Officer, at 713-314-1331 or [aeaton@alz.org](mailto:aeaton@alz.org).

|                             |             |                      |             |
|-----------------------------|-------------|----------------------|-------------|
| TO NAME THE ENTIRE BUILDING | \$2,000,000 | MEMORY CAFE          | \$500,000   |
| ATRIUM                      | \$250,000   | EDUCATION CENTER     | \$250,000   |
| FAMILY SERVICES CENTER      | \$250,000   | Large Education Room | \$100,000   |
| Helpline Reception          | \$100,000   | Program Rooms (2)    | \$50,000    |
| Volunteer Office            | \$50,000    | Technology Support   | \$50,000    |
| Counseling Office           | \$25,000    | COMMUNITY KITCHEN    | \$100,000   |
| Family Services Office      | \$25,000    | ART WALL             | <b>SOLD</b> |
| MULTI-PURPOSE ROOMS (2)     | \$100,000   | DISPLAY WALL         | \$25,000    |



Renderings of our future Memory Cafe and the Large Education Room.



# alzheimer's association®

A vibrant, beautiful tree benefits everyone in this and future generations and is perhaps the most fitting memorial of all. Planting a tree is an act of direct benefit to all.



## *Tree of Hope*

Donating a tree in honor of a loved one can inspire energy, faith, devotion, and courage and carry forward the name of those memorialized in a living, vital way that grows grander with the years.

Tree memorials not only serve as remembrances for those honored, but they also remind us of the cycles of life and seasons as they transform throughout the year.

For more information please contact Alexis Eaton, Development Officer, at 713-314-1331 or [aeaton@alz.org](mailto:aeaton@alz.org).



Our Chapter depends upon philanthropic support to carry out its vital mission. Your generosity enables us to sustain our excellence in programs and services and develop innovative model programs to ensure that we continue to meet the needs of the Alzheimer's community.

Dedicate a Memory Wall note in honor or memory of a loved one who has Alzheimer's or their caregivers. Our Memory Wall will be proudly displayed in our Memory Cafe with notes engraved with personal messages.

Gifts of \$500 or more entitle the donor to place a commemorative note on the Memory Wall.

Care Note - \$500+  
Support Note - \$1,000+  
Hope Note - \$2,500+

Donate online, phone at 713.314.1313, or by mailing in the attached donation form.

