

# PARA TOURS

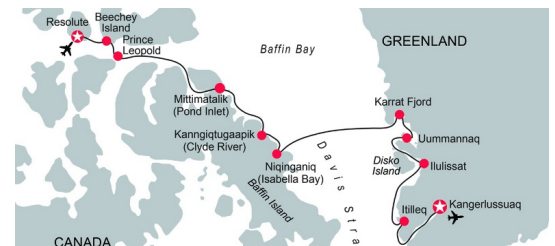
ein bleibender Eindruck



## Arctic Explorer

This epic adventure begins at the entrance to the Northwest Passage. We'll visit the final resting place of the ill-fated Franklin Expedition at Beechey Island and search for polar bears and walrus in far north Baffin Island. At Mittimatalik (Pond Inlet), our hosts will welcome us with throat-singing and Inuit games, before we explore Baffin's mighty fiords. We'll seek bowhead whales in Niginaniq (Isabella Bay)— the world's first Inuit-initiated whale sanctuary. Crossing Davis Strait, we'll be met by Greenland's stirring icescape. There, we'll zip among the freshly calved bergs off Ilulissat in our Zodiacs, marvel at Uummannaq's heart-shaped mountain, and hike around Itilleq Fjord. Spectacular Kangerlussuaq Fjord makes a glorious finale to our trip.

Internetcode: OCA164207



### Day 1: Resolute

As remote and challenging as its name suggests, Resolute is a rugged community serving the mining, military and exploration industries. A monument honours the hamlet's first permanent citizens, relocated by the Canadian government to help establish sovereignty in the Far North. Here we embark the Ocean Endeavour and commence our voyage.

### Day 2: Beechey Island and Prince Leopold

In 1845 Sir John Franklin took his expedition of 129 men in two ships into the Wellington Channel. Not a soul returned from the fateful

expedition. It was two years before search parties were launched. Aside from the bodies of three souls buried here, only relics were found as clues to the disappearance.

### Day 3: Ikpiarjuk (Arctic Bay)

Our first community visit calls at Arctic Bay, well known for its recreational events. The most popular being the Midnight Sun Marathon, which is done annually and is 84 KM in duration. This community of just over 800 inhabitants experiences the lowest tidal range

in Canada within its Bay. A perfect place to be welcomed into Canadian Inuit cultures and history.

### Day 4: Bylot Island

Named after arctic explorer Robert Bylot, this island is home to Sirmilik National Park and a rich coastal bird sanctuary. Here we will spend our time visiting a breeding site for Thick-Billed Murre, Black-legged Kittiwake, Northern Fulmar, Glaucous Gull, and Black Guillemot.

### Day 5: Mittimatalik (Pond Inlet)

Mittimatalik or Pond Inlet is a bustling Arctic community surrounded by one of the most beautiful landscapes in the Eastern Arctic. We will have a chance to explore the town, including its excellent library and other facilities, and meet many local citizens who will gladly share their culture. We will be treated to a cultural presentation at the Nattinnak Centre. Arts and crafts may be available here.

### Day 6: North East Baffin

The Arctic coastline provides numerous opportunities for landings; our program will explore the wealth and diversity of the land. We'll seek marine mammals, musk ox and polar bears as we travel, and bird watchers will want to keep their binoculars always at hand. Not to be missed are the tiny, beautiful Arctic plants, making the most of the brief summer, and the extraordinary geology that so defines the North.

### Day 7: Nigingnaniq (Isabella Bay)

Nigingnaniq is a 336,000 ha marine region on Baffin Island that is a crucial feeding area for threatened bowhead whales — the world's first Inuit-initiated marine mammal sanctuary. The area includes two deep offshore troughs rich in copepods which are a main food source for the bowhead whale.

### Day 8: Karrat Fjord

In Karrat Fjord we will cruise one of Greenland's most spectacular fjords. During ice breakup, narwhals and seals use the long leads created by high winds in this region to hunt the rich waters of the fjord. The cliffs within the fjord should give us good opportunities to see colonies of dovekies. Time spent on deck today should result in some good wildlife sightings, not to mention unbeatable photographic opportunities.

### Day 9: Uummanaq

Despite being situated in the shadow of a mountain, Uummanaq is the sunniest place in Greenland! It is an impressive and imposing 1,175-metre hunk of red gneiss called Uummanaq Mountain. This mountain serves as the town's backdrop on which colourful, single-family homes cling, anchored by cables and pipes. The famous Greenlandic mummies dating from the 15th century were found on the shore opposite Uummanaq.

### Day 10: Ilulissat

Venturing 250km north of the Arctic Circle we find the stunning coastal community of Ilulissat. Ilulissat translates literally into "iceberg", and there couldn't be a more fitting name. Our visit will include time in the colourful town and a chance to hike out to an elevated viewpoint where we can observe the

great fields of ice. We will also cruise in our fleet of zodiacs in the UNESCO World Heritage Site of the Ilulissat Icefjord. The Icefjord is where we find the Sermeq Kujalleq Glacier, one of the most active and fastest moving in the world at 19m per day and calving more than 35 square kilometers of ice annually.

### Day 11: Itilleq Fjord

The west Greenland coastline is a rich mixture of fishing communities, myriad islands and complex coastal waterways. We will be making an expedition stop here to explore the Greenlandic landscape.

### Day 12: Kangerlussuaq

Lying at the head of the longest fjord in western Greenland, Kangerlussuaq has one of the most stable climates in the region though temperatures can range from -50C in the winter to as high as 28C in summer. Kangerlussuaq, which means 'The Big Fjord' in Greenlandic, is appropriately named, as it's 168km long. This stunning sight marks the end of our voyage.

### Reisedaten

15. August bis 26. August 2016

Dauer: 12 Tage ab Resolute bis Kangerlussuaq

Im Preis inbegriffen:

- 11 Übernachtungen an Bord
- Alle Eintritts- & Park Gebühren
- Alle Mahlzeiten an Bord
- Alle Zodiac Ausflüge
- Hafengebühren

Nicht im Preis inbegriffen:

- Flüge
- Persönliche Ausgaben
- Mögliche Treibstoffzuschläge
- Trinkgelder ca. USD 15 pro Person/Tag
- Obligatorische Discovery Fund Fee USD 250 pro Person
- Fakultative Ausflüge
- Allfällige Treibstoffzuschläge
- Hotelübernachtungen vor und nach der Kreuzfahrt

Preis pro Person in Doppelkabine ab

**CHF 9015.-**

Preise für Vierer- und Dreierzimmer und andere Kategorien sind auf Anfrage.

**PARA TOURS**   
ein bleibender Eindruck

PARA TOURS GmbH  
Seftigenstrasse 201 · Postfach 220 · CH - 3084 WaBern  
Telefon +41 31 960 11 60 · Fax +41 31 960 11 61  
info@para-tours.ch · [para-tours.ch](http://para-tours.ch)