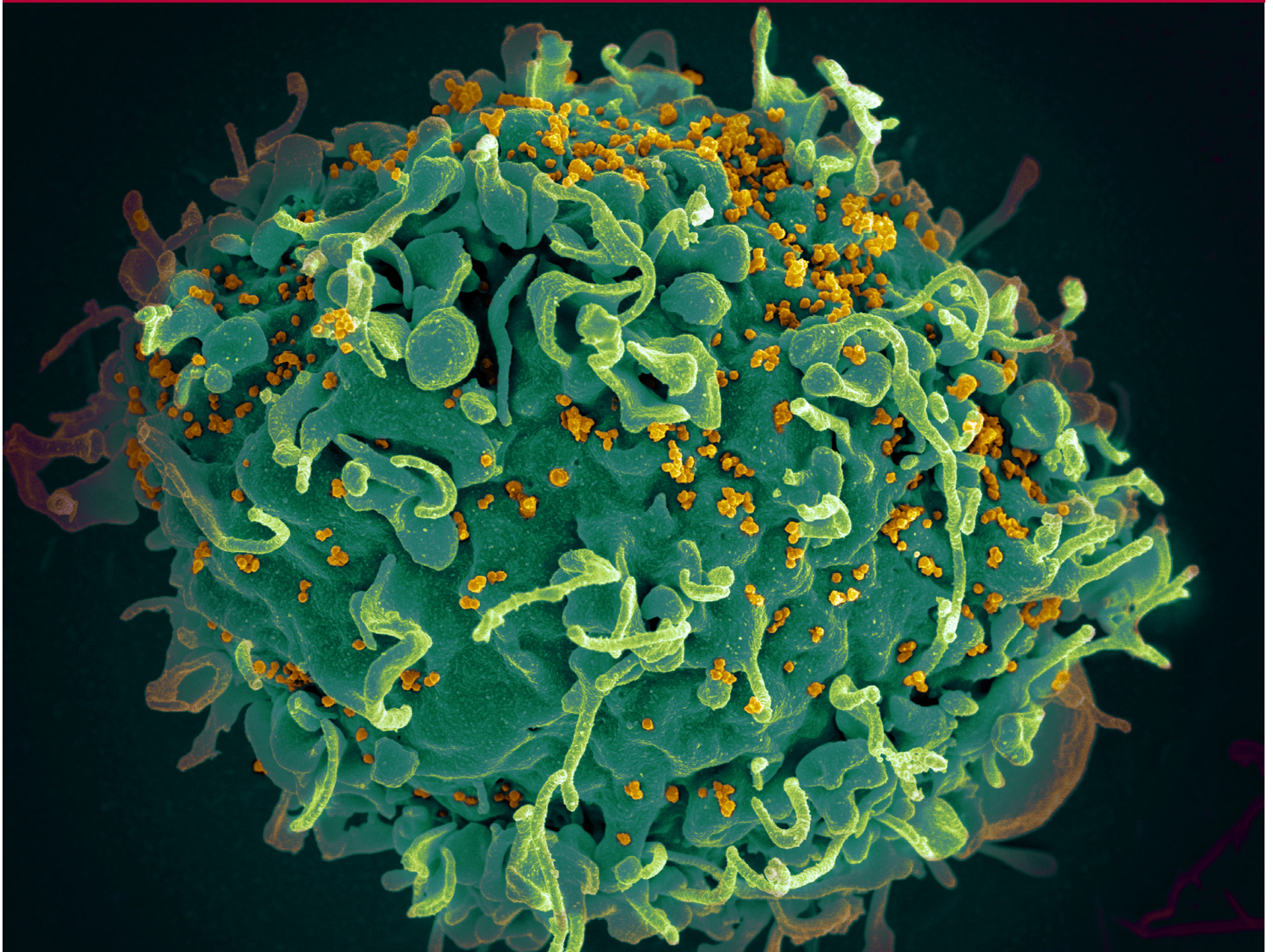


# Building Comprehensive HIV Prevention, Testing, and Care Capacity in Rural Communities

JANUARY and FEBRUARY 2016



INDIANA UNIVERSITY  
SCHOOL OF MEDICINE

Med-IQ<sup>®</sup>



Co-sponsored by Indiana University School of Medicine and Med-IQ. Developed in collaboration with the National Rural Health Association Services Corporation.

## FREE INTERPROFESSIONAL WORKSHOP

*Reserve Your Seat Today!*

Live Educational Forum to Engage Clinicians and Mental Health Professionals in Rural Communities to Improve HIV Prevention, Testing, and Care

### Activity Overview

Each 2.5-hour, interprofessional and multidisciplinary regional workshop will allow clinicians to interact with local faculty and experts to explore best practices in screening for HIV, HCV, and STI during routine care as well as strategies to enhance counseling and treatment for patients with HIV. This forum promotes the idea of bringing clinicians together to form local, cohesive, strategic care teams to optimize care for those living with HIV and/or opioid addiction.

### Target Audience

This activity is intended primarily for rural, US-based primary care clinicians, nurses, and mental health professionals, as well as for rural infectious disease specialists and primary care clinicians who specialize in HIV management.

### Learning Objectives

After attending this educational activity, participants should be able to:

- Integrate HIV, HCV, and STI screening into routine care for patients who inject drugs
- Describe evidence-based approaches to test for HIV and counsel individuals before and after testing
- Incorporate evidence-based antiretroviral treatment regimens into practice for patients living with HIV
- Assemble multidisciplinary care teams that incorporate opioid-dependence counseling and treatment into a comprehensive, local HIV prevention strategy

### Education Partners

This activity is planned and implemented by **Indiana University School of Medicine, Med-IQ**, and **National Rural Health Association Services Corporation**.

### Accreditation Statement



The Indiana University School of Medicine is accredited by the Accreditation Council for Continuing Medical Education to provide continuing medical education for physicians.

### Designation Statement

The Indiana University School of Medicine designates this live educational activity for a maximum of *2.5 AMA PRA Category 1 Credit(s)*<sup>™</sup>. Physicians should only claim credit commensurate with the extent of their participation in the activity.

Med-IQ is accredited by the California Board of Registered Nursing to provide continuing education to nurses. Provider approved by the California Board of Registered Nursing, provider number CEP 14745, for 2.5 contact hours.

**Physician Assistants:** *AAPA accepts certificates of participation for educational activities certified for AMA PRA Category 1 Credits<sup>™</sup> from organizations accredited by ACCME or a recognized state medical society. Physician assistants may receive a maximum of 2.5 hours of Category 1 credit for completing this program.*

**Others:** Nurse practitioners and other healthcare professionals who successfully complete the activity will receive a Statement of Participation indicating the maximum credits available.

### Faculty Disclosure Statement

In accordance with the Accreditation Council for Continuing Medical Education (ACCME) Standards for Commercial Support, educational programs sponsored by Indiana University School of Medicine (IUSM) must demonstrate balance, independence, objectivity, and scientific rigor. All faculty, authors, editors, and planning committee members participating in an IUSM-sponsored activity are required to disclose **any relevant financial interest or other relationship** with the manufacturer(s) of any commercial product(s) and/or provider(s) of commercial services that are discussed in an educational activity.

Statements of disclosure have been obtained from these speakers. Speakers, staff of IUSM CME, and staff of Med-IQ have no relevant financial relationships nothing to disclose.

### Acknowledgement

This activity is supported by an educational grant from:

**Gilead Sciences, Inc.**

### Note

Although this activity offers CME/CE credits, it is not intended to provide extensive training or certification in the field.

# BUILDING COMPREHENSIVE HIV PREVENTION, TESTING, and CARE CAPACITY in RURAL COMMUNITIES

## AGENDA

9:00 a.m.	REGISTRATION and BREAKFAST	
9:20 a.m.	WELCOME, KEYNOTE ADDRESS, and CALL to ACTION	45 minutes
10:05 a.m.	SMALL GROUP EDUCATION – <i>Topic-specific Didactic Presentation and Case Exercises:</i> <ul style="list-style-type: none"> <li>• Implementing Screening for HIV/HCV</li> <li>• Screening for Opioid Use Disorders and Coordinating Mental Health Services</li> <li>• Preventing Transmission of HIV</li> </ul>	45 minutes
10:50 a.m.	BREAK	10 minutes
11:00 a.m.	INTERPROFESSIONAL DISCUSSION FORUM	45 minutes
11:45 a.m.	TAKEAWAYS for the COMMUNITY and ACTION PLANNING	15 minutes
Noon	ADJOURN	

## STEERING COMMITTEE FACULTY



### Diane Janowicz, MD

Assistant Professor of Clinical Medicine  
Indiana University School of Medicine  
Fellowship Program Director — Infectious Diseases



### Mitchell Goldman, MD

Professor of Medicine  
Indiana University School of Medicine  
Department of Medicine, Division of Infectious Diseases



### Matthew Miles, DO

Internal Medicine Chief Resident  
Safety and Quality Improvement  
Indiana University Internal Medicine Residency Program





## Location and Date Information

**Thursday, January 21, 2016**

**St. Mary's Medical Center**

The Amphitheater  
3700 Washington Avenue, Evansville, IN 47714



**Thursday, February 4, 2016**

**Indiana University Kokomo**

Kelley Student Center, Room 130  
2300 South Washington Street, Kokomo, IN 46902



**Thursday, February 18, 2016**

**General Butler State Resort Park**

Conference Center  
1608 KY-227, Carrollton, KY 41008



**Friday, February 26, 2016**

**Indiana University Southeast**

University Center North, Room 127  
4201 Grant Line Road, New Albany, IN 47150



## Registration

***Building Comprehensive HIV Prevention, Testing, and Care Capacity in Rural Communities***

**JANUARY and FEBRUARY 2016**

**FREE INTERPROFESSIONAL WORKSHOP**

**REGISTER TODAY!** Complete the form below and fax it to (toll-free) (866) 419-5789. You may also register at [www.med-iq.com/a922](http://www.med-iq.com/a922), by calling (toll-free) (866) 858-7434, or by e-mailing [info@med-iq.com](mailto:info@med-iq.com).

First Name	Last Name	
Specialty		
<input type="checkbox"/> MD <input type="checkbox"/> DO <input type="checkbox"/> PA <input type="checkbox"/> NP <input type="checkbox"/> RN <input type="checkbox"/> PharmD <input type="checkbox"/> Other (please specify)		
Nurses — Provide License #		
Pharmacists — Provide NABP e-Profile ID and Date of Birth (DOB):		
e-Profile ID	DOB (MMDD format)	
Mailing Address		
City	State	Zip
Phone	Fax	
E-mail		
Practice Setting	How many clinicians are in your practice?	
Please send me information on additional Med-IQ CME/CE activities:		
<input type="checkbox"/> By fax		<input type="checkbox"/> By e-mail

### SELECT DATE TO ATTEND:

- Thursday, January 21, 2016 (Evansville, Indiana)  
 Thursday, February 4, 2016 (Kokomo, Indiana)  
 Thursday, February 18, 2016 (Carrollton, Kentucky)  
 Friday, February 26, 2016 (New Albany, Indiana)

## Further Information

### General Questions

**Indiana University School of Medicine**

Division of Continuing Medical Education  
1110 W. Michigan Street, LO 401, Indianapolis, IN 46202

(317) 274-0104 | E-mail: [cme@iu.edu](mailto:cme@iu.edu)

For other CME offerings, please visit our Web site:  
<http://cme.medicine.iu.edu>

### Registration Information

#### Med-IQ

5523 Research Park Drive, Suite 210, Baltimore, MD 21228

Register Online: [www.med-iq.com/a922](http://www.med-iq.com/a922)

Register by Phone (toll-free): (866) 858-7434

Register by E-mail: [info@med-iq.com](mailto:info@med-iq.com)