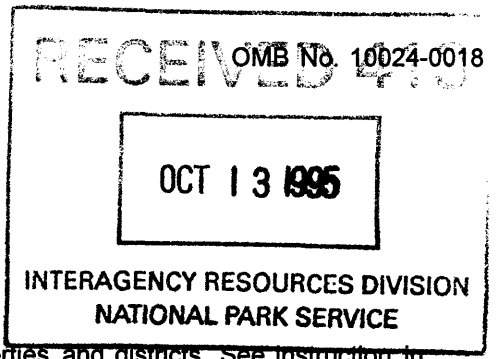


United States Department of the Interior  
National Park Service

# National Register of Historic Places Registration Form



This form is for use in nominating or requesting determination for individual properties and districts. See instruction in *How to Complete the National Register of Historic Places Registration Form* (National Register Bulletin 16A). Complete each item by marking "x" in the appropriate box or by entering the information requested. If an item does not apply to the property being documented, enter "N/A" for "not applicable." For functions, architectural classification, materials and areas of significance, enter only categories and subcategories from the instructions. Place additional entries and narrative items on continuation sheets (NPS Form 10-900a). Use a typewriter, word processor, or computer, to complete all items.

### 1. Name of Property

historic name Loma Community Hall

other names/site number 5ME7055

### 2. Location

street & number 1341 County Road 13 [N/A] not for publication

city or town Loma [N/A] vicinity

state Colorado code CO county Mesa code 077 zip code 81524

### 3. State/Federal Agency Certification

As the designated authority under the National Historic Preservation Act, as amended, I hereby certify that this  nomination  request for determination of eligibility meets the documentation standards for registering properties in the National Register of Historic Places and meets the procedural and professional requirements set forth in 36 CFR Part 60. In my opinion, the property  meets  does not meet the National Register criteria. I recommend that this property be considered significant  nationally  statewide  locally.  
( See continuation sheet for additional comments [ ]. )

James Edward Hartman State Historic Preservation Officer October 12, 1995  
Signature of certifying official/Title Date

State or Federal agency and bureau

In my opinion, the property  meets  does not meet the National Register criteria.  
( See continuation sheet for additional comments [ ]. )

Signature of certifying official/Title Date

State or Federal agency and bureau

### 4. National Park Service Certification

I hereby certify that the property is:

- entered in the National Register  
See continuation sheet [ ].
- determined eligible for the National Register  
See continuation sheet [ ].
- determined not eligible for the National Register.
- removed from the National Register
- other, explain  
See continuation sheet [ ].

Edson W. Beall Entered in the National Register Date 11/22/95  
Signature of the Keeper

\_\_\_\_\_  
\_\_\_\_\_  
\_\_\_\_\_

Loma Community Hall

**Name of Property**

Mesa County, CO

**County/State**

**5. Classification**

**Ownership of Property**

(Check as many boxes as apply)

- private
- public-local
- public-State
- public-Federal

**Category of Property**

(Check only one box)

- building(s)
- district
- site
- structure
- object

**Number of Resources within Property**

(Do not count previously listed resources.)

Contributing

Noncontributing

1 1 buildings

\_\_\_\_\_ sites

\_\_\_\_\_ structures

\_\_\_\_\_ objects

1 1 Total

**Name of related multiple property listing.**

(Enter "N/A" if property is not part of a multiple property listing.)

N/A

**Number of contributing resources previously listed in the National Register.**

0

**6. Function or Use**

**Historic Function**

(Enter categories from instructions)

SOCIAL/meeting hall

RECREATION AND CULTURE/auditorium

EDUCATION/education-related

\_\_\_\_\_

\_\_\_\_\_

\_\_\_\_\_

\_\_\_\_\_

**Current Functions**

(Enter categories from instructions)

SOCIAL/meeting hall

RECREATION AND CULTURE/auditorium

\_\_\_\_\_

\_\_\_\_\_

\_\_\_\_\_

\_\_\_\_\_

**7. Description**

**Architectural Classification**

(Enter categories from instructions)

LATE 19TH AND EARLY 20TH CENTURY

AMERICAN MOVEMENTS

\_\_\_\_\_

\_\_\_\_\_

\_\_\_\_\_

\_\_\_\_\_

**Materials**

(Enter categories from instructions)

foundation CONCRETE

walls WOOD

\_\_\_\_\_

roof ASPHALT

other \_\_\_\_\_

\_\_\_\_\_

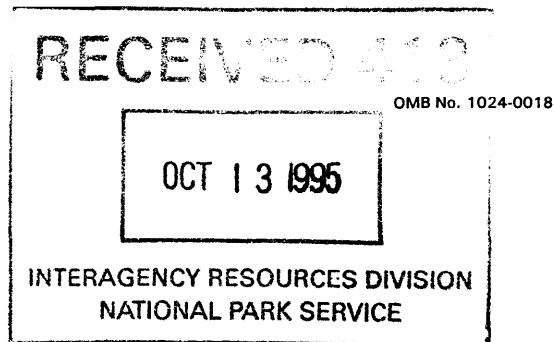
**Narrative Description**

(Describe the historic and current condition of the property on one or more continuation sheets.)

United States Department of the Interior  
National Park Service

**National Register of Historic Places  
Continuation Sheet**

Section number 7 Page 1



Loma Community Hall  
Mesa County, CO

**DESCRIPTION**

The Loma Community Hall is a one-story, wood-sided, rectangular plan building with a front entry vestibule and a barrel roof covered by rolled asphalt. The north and south elevations each contain a square, brick chimney. The north, east and south elevations are each filled with pairs of uniformly spaced, six-over-six, double-hung, sash windows at what appears to be a second-story level. The windows actually provide interior illumination for a one-story, multi-use recreational space which includes a full length basketball court and a raised stage area. The lower portion of the interior walls are covered with stained wood panels while the upper walls, ceiling and exposed roof trusses are painted white. The entry vestibule doors are flanked by a pair of small ticket booths. The basement contains a fully equipped institutional kitchen with numerous built-in wood cabinets. The Community Hall fronts east onto Mesa County Road 13 at the north end of the Loma community. The site is flat and unlandscaped except for the concrete sidewalks and graded gravel parking lot. A modern Butler-type fire station occupies the area between the hall and the county road. The Community Hall is in excellent condition and has had almost no alterations since its 1938 construction.

The Loma Community Hall is an intact, utilitarian, wood-frame structure constructed by the Works Progress Administration as part of a Depression Era, Federal Resettlement Project. It is a simple wooden rectangular (82'x48') building rising approximately 28 feet with clapboard siding. The building rests on a concrete foundation and its basement walls contain concrete blocks salvaged from the parish house that formerly stood on the site before being razed for the construction of the hall. Numerous hopper and double-hung, one-over-one windows pierce the basement walls above grade. A stairway from the west side of the basement leads up to the exterior of the building. Three windows above the stairs are boarded over. The north and south elevations each have five double, six-over-six windows evenly spaced across each side providing abundant interior illumination. A centered set of double doors opens directly into the gym/auditorium, and a single door opens into an entry hall with access to the stage, the gym/auditorium and the stairways to the basement. A sixth single window at the west end of each elevation affords light and ventilation to the stage hallways. The front (east elevation) of the building contains the main entry vestibule which extends approximately eight feet from the main building and is accessed by three concrete steps. Four-light windows flank the double entry doors. Three additional windows are located above and to the sides of the entry. The roof is covered with rolled roofing. The building has been kept in its original form and materials except for needed repairs. The exterior is painted white as it was when it was built. The south side of the roof has been repaired with shingles due to high wind damage in 1993.

On the interior, the front entry hall contains two small ticket booths, one on either side of the double doors. Entry to the booths is from the gym/auditorium through doors located on each side of the interior set of double doors. The main room of the hall is a large gym/auditorium with a hardwood

United States Department of the Interior  
National Park Service

## National Register of Historic Places Continuation Sheet

Section number 7 Page 2

Loma Community Hall  
Mesa County, CO

---

floor. The walls are plywood, varnished to the height of the door frames and painted white above. Six basketball goals are attached to the walls; two on each side with the main goals including backboards on the east and west ends. A large stage runs the full length of the hall's west end. The north and south wings of the stage open into two small entry halls with access outside and downstairs. Lights in the gym area are covered with protective wire baskets dating to the original construction. The exposed roof trusses and the ceiling are painted white.

The basement stairways open into a knotty pine paneled main room used primarily for dining. A full kitchen fills the south side of the basement and contains the original cabinets, stove, and sink. Men's and women's restrooms are located on the north side of the basement. Additional storage cabinets are built into the east end of the basement. A room behind these cabinets contained the original coal furnace. This space now contains a gas furnace. An additional storage room is located on the west side beneath the stairs.

The Loma Community Hall sits in a farming community southeast of the Loma school building. The land for the hall was originally donated by the school district. The hall was placed at the center of the community as a place for social and other community gatherings. The hall is still being utilized much as it was following its 1938 construction.

The Loma Community Hall appears to have changed little since its construction. All alterations have been the result of general maintenance and upkeep. In 1992, the outside of the hall was repainted white with blue trim and a ramp for wheelchair accessibility was added to the front entry. A high wind storm in 1993 damaged the south side of the roof. The damage was repaired by replacing sections of the rolled roofing with asphalt shingles. Some window glass has been replaced over the years, however the window frames are all original. In 1992, new toilets were put into the downstairs and gas furnaces were installed on both levels. Fans were placed in the high ceiling of the gym the same year to increase air flow and assist in heating and cooling. The following year the hardwood floor in the gym was stripped and refinished.

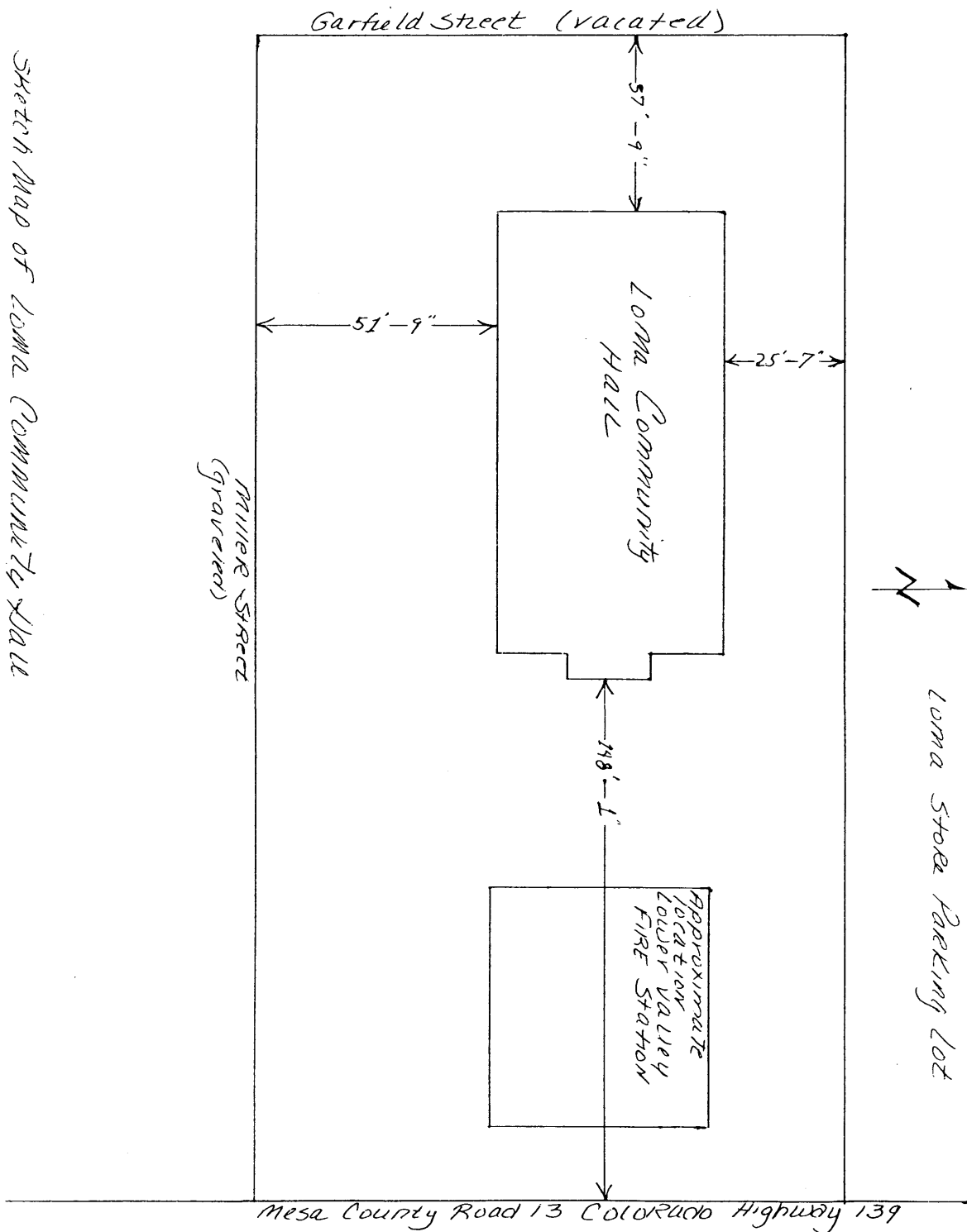
In 1989 the fire district built a prefabricated metal three bay fire station to the east of the hall on the front of the property. Although the new fire station partially blocks the view of the hall from the road to the east, the intrusion does not significantly lessen the overall integrity of the setting.

United States Department of the Interior  
National Park Service

National Register of Historic Places  
Continuation Sheet

Section number 7 Page 3

Loma Community Hall  
Mesa County, CO



Loma Community Hall  
**Name of Property**

Mesa County, CO  
**County/State**

### 8. Statement of Significance

#### Applicable National Register Criteria

(Mark "x" in one or more boxes for the criteria qualifying the property for National Register listing.)

**A** Property is associated with events that have made a significant contribution to the broad patterns of our history

**B** Property is associated with the lives of persons significant in our past.

**C** Property embodies the distinctive characteristics of a type, period, or method of construction or represents the work of a master, or possesses high artistic values, or represents a significant and distinguishable entity whose components lack individual distinction.

**D** Property has yielded, or is likely to yield, information important in prehistory or history.

#### Criteria Considerations

(Mark "x" in all the boxes that apply.)

Property is:

**A** owned by a religious institution or used for religious purposes.

**B** removed from its original location.

**C** a birthplace or grave.

**D** a cemetery.

**E** a reconstructed building, object, or structure.

**F** a commemorative property.

**G** less than 50 years of age or achieved significance within the past 50 years.

#### Narrative Statement of Significance

(Explain the significance of the property on one or more continuation sheets.)

### 9. Major Bibliographic References

#### Bibliography

(Cite the books, articles and other sources used in preparing this form on one or more continuation sheets.)

#### Previous documentation on file (NPS):

preliminary determination of individual listing (36 CFR 67) has been requested

previously listed in the National Register

previously determined eligible by the National Register

designated a National Historic Landmark

recorded by Historic American Buildings Survey

# \_\_\_\_\_

recorded by Historic American Engineering Record

# \_\_\_\_\_

#### Areas of Significance

(Enter categories from instructions)

SOCIAL HISTORY

ENTERTAINMENT/RECREATION

ARCHITECTURE

#### Periods of Significance

1938 - 1945

#### Significant Dates

N/A

#### Significant Person(s)

(Complete if Criterion B is marked above).

N/A

#### Cultural Affiliation

N/A

#### Architect/Builder

Works Progress Administration

#### Primary location of additional data:

State Historic Preservation Office

Other State Agency

Federal Agency

Local Government

University

Other:

Name of repository:

\_\_\_\_\_  
\_\_\_\_\_  
\_\_\_\_\_

United States Department of the Interior  
National Park Service

## National Register of Historic Places Continuation Sheet

Section number 8 Page 4

Loma Community Hall  
Mesa County, CO

---

### SIGNIFICANCE

The Loma Community Hall is significant for its architecture, social history, and its role as the center of entertainment and recreation in Loma. The hall is an intact example of a Depression Era, Works Progress Administration project constructed for the Federal Resettlement Administration community around Loma. The design yielded a simple, utilitarian, multi-use space; and its success is reflected in the hall's long years of service to the community without alterations. The Resettlement Administration (RA) was a Federal New Deal relief program of the 1930s created to relocate citizens in Dust Bowl stricken areas to less developed but more prosperous regions and assist in their resettlement. The RA adhered to the theory that mutual community support of residents would increase the likelihood of the individual participants achieving economic success, and at the same time decrease the need for Federal assistance. To encourage the development of a sense of community, the RA planned for and provided some financial assistance toward the construction of a community hall in most resettlement communities. The Loma Community Hall is one of the few surviving and the most intact example of this aspect of the RA projects in Colorado. The hall was designed and used for a variety of entertainment and recreational events such as community dances, school sporting events and programs, and community dinners, as well as community meetings, voting and community club meetings. These activities built the sense of community and mutual responsibility that the RA saw as vital to a resettlement community's success. The Loma Community Hall served from its construction through the end of World War II as the focal point of community social, entertainment, and recreational activities.

Loma is a farming community on Colorado's western slope fifteen miles west of Grand Junction on the Colorado River in the Grand Valley. The town was developed by land speculators during the first decade of the 20th century and was advertised as "The Orchard Town of Loma."

The President Roosevelt Resettlement Administration Project near Grand Junction was one of 149 relocation projects established by the agency across the United States during the 1930s (the Farm Security Administration (FSA) took over from the RA in 1938). It was one of two such resettlement projects in the state of Colorado. The projects relocated farm families from dust bowl stricken areas of the West to more stable areas. The Federal government purchased land in project areas to provide farm families with 60 to 160 acres, a house, barn and outbuildings. There were 42 farm units established by this project in the Grand Valley area.

Families could rent the resettlement homesteads for a trial period of up to five years with the option to purchase the property with low interest long term loans from the government. Additional short term loans were available to farmers to purchase livestock and other equipment. Community cooperation was encouraged to facilitate the purchase and shared use of such large farm equipment as tractors. The RA/FSA provided educational assistance to farm families on wide range of aspects of farm management, personal health, and domestic science. As part of this community cooperation initiative, a community

United States Department of the Interior  
National Park Service

## National Register of Historic Places Continuation Sheet

Section number 8 Page 5

Loma Community Hall  
Mesa County, CO

---

building was constructed in a central location for each project. The Loma Community Hall is the community building for the President Roosevelt Project in the Grand Valley.

The Loma Community Hall was built on land donated to the community by the school district in 1938. The construction of the hall was administered by another Depression Era program, the Works Progress Administration (WPA). The WPA and RA/FSA shared the construction costs with the Loma school district and the residents of Loma. A ground breaking ceremony followed by a community barbecue and celebration dance were held in November, 1938, with food provided by the RA/FSA and several Washington and Denver based representatives of the agency in attendance. Construction was completed by July 1940. The building had running water via a cistern and a complete kitchen, dining area, and restrooms were located in the basement. The upstairs housed a full size basketball court gym with a full-width stage on one end. The hall easily accommodated 200 people. With the assistance of the FSA, a community council was created to maintain and oversee the use of the hall. The hall served as a gathering center for area churches and community groups. It has been used for voting, dances, school functions, youth groups, the Red Cross and community programs. Dances provided the main source of funds that were used to pay utilities, upkeep, and the coal for the furnace. During the time that the community council managed the hall, not a dime of tax money went toward the maintenance of the hall.

During World War II many New Deal agencies and projects were disbanded or ceased to receive funding. The Federal government reevaluated the mortgages extended to the resettled farmers through RA or FSA projects. Some farmers, angered by the increases and changes to their original loan agreements, left their farms. These mortgage changes, along with the draw of men and women away from rural areas to support war effort employment and the economic failure of some program participants, reduced the number of resettled farm families by the post war years.

This trend of reduced participation is reflected in Loma by the dissolution of the community council in 1945. The hall was given to school district #23 to be used for school activities. The Loma Community Hall served as gym and cafeteria for the school district from 1945 until 1981 when the school district traded the hall to Mr. Rod Dowley, a private citizen in exchange for ten acres of land on which to build a new school. The hall stood vacant and unused until 1987, when Mr. Dowley donated the hall to the Lower Valley Fire Protection District. The Hall is once again being used for the wide variety of community functions for which it was originally constructed.



United States Department of the Interior  
National Park Service

**National Register of Historic Places  
Continuation Sheet**

Section number 9/10 Page 6

Loma Community Hall  
Mesa County, CO

---

**BIBLIOGRAPHY**

DeKruger, Mildred. Interview, 6 December 1983. Mesa County Public Library, Grand Junction, Colorado.

Donoho, Virginia. Where is Loma. Loma, Colorado: Virginia Donoho, 1982.

Leonard, Stephen J. Trials and Triumphs: A Colorado Portrait of the Great Depression with FSA Photographs. Niwot, Colorado: University of Colorado Press, 1993.

Lyman, Clarence A. The Orchard Town of Loma in the Grand Valley, Colorado. Denver: Clarence A. Lyman, 1909.

"Resettlement Project Residents Enjoy Picnic and Buffalo Barbecue." Grand Junction, Colorado Daily Sentinel, November 13, 1938.

"San Luis Valley Resettlement Project, United States Department of Agriculture, Farm Security Administration." San Luis Valley Historian, vol. XXI, No. 2, 1989.

**VERBAL BOUNDARY DESCRIPTION**

The nomination includes Lots 7 through 16 plus 15 feet of the vacated alley in Block 12, Loma Colorado.

**BOUNDARY JUSTIFICATION**

The nomination includes all the land historically associated with the Loma Community Hall.

Loma Community Hall  
Name of Property

Mesa County, CO  
County/State

### 10. Geographical Data

Acreege of Property less than one acre

#### UTM References

(Place additional UTM references on a continuation sheet.)

1. Zone	12	688850	4340910	2. Zone	Easting	Northing
3. Zone	Easting	Northing	4. Zone	Easting	Northing	

[ ] See continuation sheet

#### Verbal Boundary Description

(Describe the boundaries of the property on a continuation sheet.)

#### Boundary Justification

(Explain why the boundaries were selected on a continuation sheet.)

### 11. Form Prepared By

name/title Barbara Cowley  
organization Lower Valley Fire Protection District date August 12, 1994  
street & number 168 North Mesa Street telephone 303-858-3133  
city or town Loma state CO zip code 81521

#### Additional Documentation

Submit the following items with the completed form:

#### Continuation Sheets

#### Maps

A USGS map (7.5 or 15 minute series) indicating the property's location.

A Sketch map for historic districts and properties having large acreage or numerous resources.

#### Photographs

Representative black and white photographs of the property.

#### Additional Items

(Check with the SHPO or FPO for any additional items)

#### Property Owner

(Complete this item at the request of SHPO or FPO.)

name Lower Valley Fire Protection District  
street & number 168 North Mesa Street date \_\_\_\_\_  
city or town Loma state CO zip code 81521

**Paperwork Reduction Act Statement:** This information is being collected for applications to the National Register of Historic Places to nominate properties for listing or determine eligibility for listing, to list properties, and to amend existing listings. Response to this request is required to obtain a benefit in accordance with the National Historic Preservation Act, as amended (16 U.S.C. 470 *et seq.*).

**Estimated Burden Statement:** Public reporting burden for this form is estimated to average 18.1 hours per response including time for reviewing instructions, gathering and maintaining data, and completing and reviewing the form. Direct comments regarding this burden estimate or any aspect of this form to the Chief, Administrative Services Division, National Park Service, P.O. Box 37127, Washington, DC 20013-7127; and the Office of Management and Budget, Paperwork Reductions Projects (1024-0018), Washington, DC 20503.

United States Department of the Interior  
National Park Service

## National Register of Historic Places Continuation Sheet

Section number Additional Documentation Page 7

Loma Community Hall  
Mesa County, CO

---

### PHOTOGRAPH LOG

The following information pertains to photographs numbers 1-15:

Name of Property: Loma Community Hall

Location: Loma, Mesa County, Colo.

Photographer: Barbara Cowley

Date of Photographs: 3-16-1994

Negatives: Lower Valley Fire Protection District

<u>Photo No.</u>	<u>Information</u>
1	North and east elevations, view to the southwest.
2	North elevation with main entry, view to the southwest.
3	North elevation with main entry, view to the northwest. The Loma school associated with the Community Hall after 1945 is visible in the background.
4	North and east elevations, view to the southwest.
5	South elevation, view to the northeast.
6	Rear (west) elevation, view to the southeast.
7	Interior view from main entry, view to the west.
8	Interior view from the stage, view to the east.
9	Interior view from the stage, view to the east.
10	Interior view, rafter detail.
11	Interior view, ticket booth window, main entry.
12	Interior view of basement kitchen.
13	Interior view of basement kitchen.
14	Interior view of basement.
15	Modern fire station building to east of Community Hall, view to the southwest.

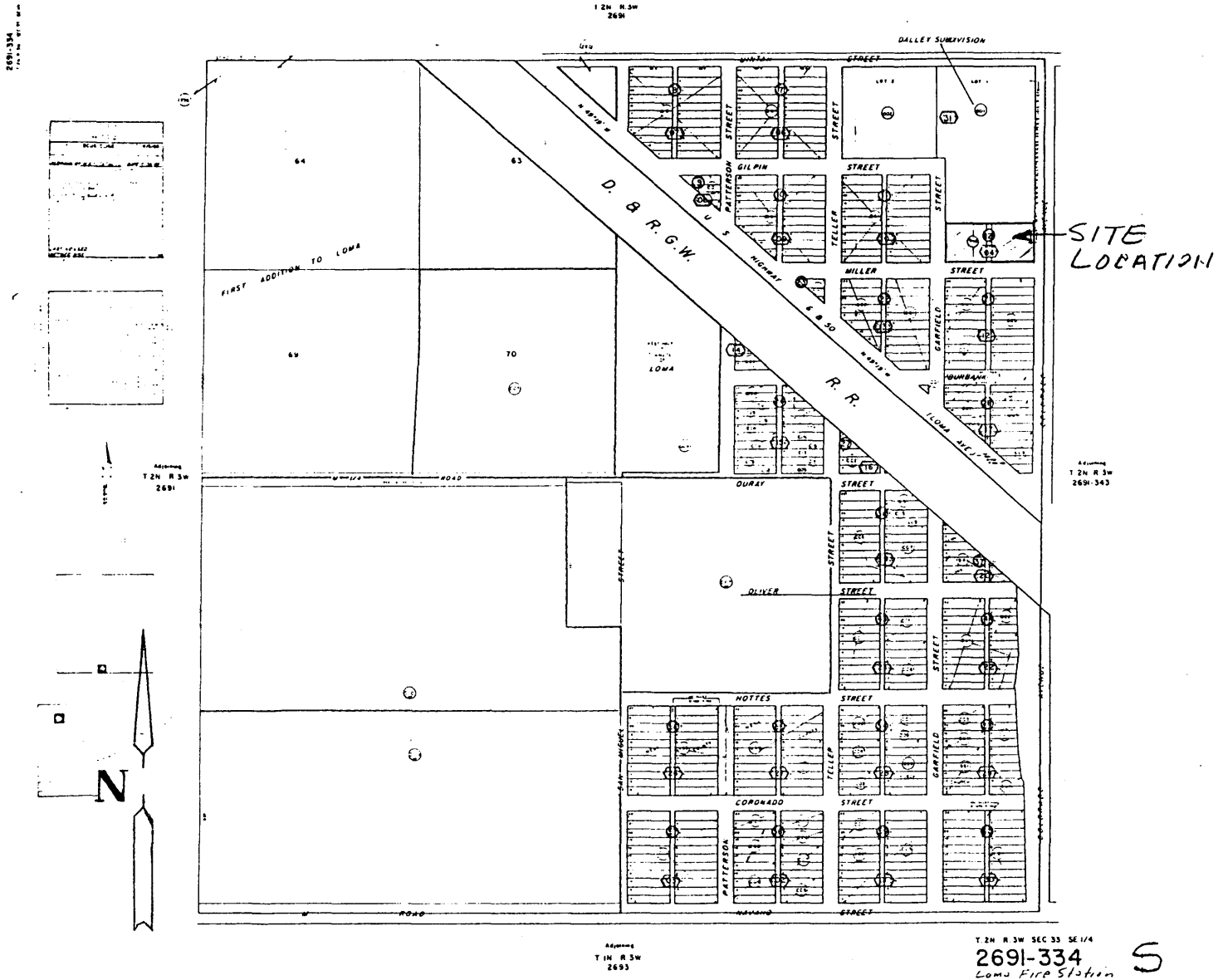
United States Department of the Interior  
National Park Service

National Register of Historic Places  
Continuation Sheet

Section number Additional Documentation Page 8

Loma Community Hall  
Mesa County, CO

PLAT MAP



United States Department of the Interior  
National Park Service

National Register of Historic Places  
Continuation Sheet

Section number Additional Documentation Page 9

Loma Community Hall  
Mesa County, CO

USGS MAP  
Mack, Colo. Quad

