

Notes:

---

---

---

---

---

---

---

1 Square = \_\_\_\_ Foot/Feet



**TITAN**®  
CONTROLS

# HERCULES™ 3

## Power Expander Module Instruction Manual



# Hercules™ 3 Power Expander Module

- Warnings & Cautions
- Hercules™ 3 – Power Expander Module Overview
- Instructions for Operation
- Troubleshooting Tips
- Controller Specifications
- Installation Examples
- Warranty Information
- Service and Repair Program

## Warnings & Cautions

- Read all instructions before operating Hercules™ 3 controller.
- Do not put your controller in an area where it can get wet or sprayed.
- When using “bug bombs” in the area, cover controller completely to avoid corrosion.
- There are no serviceable parts in the controller. Do not attempt to repair unit.
- Breaking ‘warranty’ seal will void your warranty.
- Do not put paperclips, tools, etc. into unit. Possible electrocution may occur.
- Plug controller into surge protector to avoid potential damage to the unit.
- Make sure to verify your power source is 120 Volts prior to plugging controller into outlet.
- Check that all equipment that will be activated by this controller is 120 Volts.
- This controller is designed for inside use only.
- Avoid placing the controller near heat generating sources.
- Use caution when operating controller in extremely humid environments.
- Do not use controller for purposes other than the unit was designed to function.
- Use controller within defined environmental specifications.
- Ask your Dealer for tips and techniques regarding the use of this controller.
- Be conscientious when disposing of any products.
- Enjoy your Titan Controls gear for years to come!

## WARRANTY SERVICE: Please read warranty information first

If after reviewing the troubleshooting tips the unit will still not work, you should return it to the Dealer where you purchased the controller. They will be able to further evaluate the unit and test its various components and quite possibly will be able to identify and/or fix any problems. If the Dealer is unable to fix the unit, they will return it to us for factory repair.

If there are no Dealers in your area, you may contact us directly for technical support. If we cannot help you resolve the problem over the phone, we will issue you an RMA # (return merchandise authorization) authorizing you to return the unit to us for factory reconditioning (if the unit is under warranty). Contact the number below for an RMA # and shipping address. Complete the form below and include it with your unit. Also please write the RMA # on the outside of the box.

Please package the unit in its original packaging. If it is damaged in shipment we cannot be responsible.

Once we receive the unit back, we will repair the controller within 48 hours (business) and return it to you freight prepaid via UPS ground shipment.

Include the following if returning directly to Titan Controls®

- Proof of purchase
- This completed form
- RMA # on the outside of the box

Return Merchandise Authorization Number (Required) \_\_\_\_\_

Company Name: \_\_\_\_\_

Contact Name: \_\_\_\_\_

Address: \_\_\_\_\_

Phone #: \_\_\_\_\_

Email address: \_\_\_\_\_

What is the nature of the problem? \_\_\_\_\_

\_\_\_\_\_

\_\_\_\_\_

\_\_\_\_\_

\_\_\_\_\_

\_\_\_\_\_

Send to your nearest location – shipping address will be given when the RMA # is issued:



[www.titancontrols.net](http://www.titancontrols.net)

For technical assistance call us at 1-888-80-Titan or 1-888-808-4826.  
Representative available Monday – Friday, 8 a.m. – 5 p.m. PST.

## Warranty Information

- Titan Controls® warrants the original purchase of this product against defects in material and workmanship under normal use for two (2) years from the date of purchase.
- During the warranty period, Titan Controls® will, at our option, and without charge, repair or replace this product if the controller or any of its components fail or malfunction.
- All returns or repairs must be accompanied by a Return Merchandise Authorization (RMA) number prior to any service of the product.
- This warranty is expressly in lieu of all other warranties, expressed or implied, including the warranties of merchantability and fitness for use and of all other obligations or liabilities on the part of the seller.
- This warranty shall not apply to this product or any part thereof which had been damaged by accident, abuse, misuse, modification, negligence, alteration or misapplication.
- Controllers with serial numbers or date tags that have been removed, altered or obliterated; broken seals or that show evidence of tampering; mismatched board serial numbers or nonconforming parts, are excluded from coverage.
- Titan Controls® makes no warranty whatsoever in respect to accessories or parts not supplied by Titan Controls®.
- Monetary refunds of the warranty will not be given.
- The Buyer assumes all responsibility regarding the use & installation of this controller.
- All warranty service is provided through the factory or an authorized service representative.
- This warranty shall apply only to the United States, including Alaska, Hawaii and territories of the United States and Canada.
- Defective controllers need to be returned with the “proof of purchase/receipt”.
- For additional warranty information, contact a Titan Controls® Technical Service Representative at 888-808-4826 or your Dealer. Our normal business hours are Monday – Friday, 8 a.m. to 5 p.m. Pacific Standard Time. We are closed most major holidays.
- NOTE: Titan Controls® is a manufacturer of environmental controls. All sales offerings to the public are done through a nationwide group of Dealers. No sales offerings will be made directly to the general public.

## Service and Repair Program

- For all service and repairs please contact one of our Technical Service Representatives for a Return Merchandise Authorization (RMA) number.
- All factory service & repairs will be completed within 48 hours of receipt of controller and after authorization by customer for repairs.
- Titan Controls® will, at its discretion, repair or replace the controller.
- Factory calibration services are available for all Titan Controls®.
- Returning Units: Please contact your retail store for returns.

## Hercules™ 3 – Power Expander Module Overview

The Hercules™ 3 – Power Expander Module is a basic power switch to control, from a separate power circuit, a dehumidifier, fan, CO<sub>2</sub> device, pump, HID light or any other 120 Volt product that requires 15 amps or less. It is intended to be plugged into an environmental controller, timer or other device to activate and deactivate the load that's to be controlled using the controller, timer, etc. as the switching unit. The Hercules™ 3 provides up to 15 Amps of capacity from a standard 120 Volt circuit. The Hercules™ 3 is handcrafted with the highest quality components and will provide the user with years of trouble-free service.

## Instructions for Operation

1. Securely place your Hercules™ 3 in your grow enclosure, away from any spray/water/mist, etc.
2. Plug your equipment into the 5-15R receptacle in the front of the Hercules™ 3.
3. Adjust your equipment to preferred setting or to ON status.
4. Verify that the equipment to be operated is 120 Volts/60 Hz.
5. Then plug the Hercules™ 3 into a verified 120 Volt NEMA 5-15R receptacle.
6. DO NOT overload the Hercules™ 3. Continuous load cannot exceed 12.5 Amps.
7. NOW plug the Hercules™ 3 ‘trigger cord set’ into the environmental controller, timer or other activation device. Check that the activation device is 120 Volts ONLY!
8. The use of surge protection is recommended to protect your equipment.
9. The Hercules™ 3 will now operate your equipment at the desired settings until power is turned off.
10. NOTE: Always unplug Hercules™ 3 from all power sources when servicing equipment.

## Troubleshooting Tips

If the Hercules™ 3 is not operating as expected, try the following:

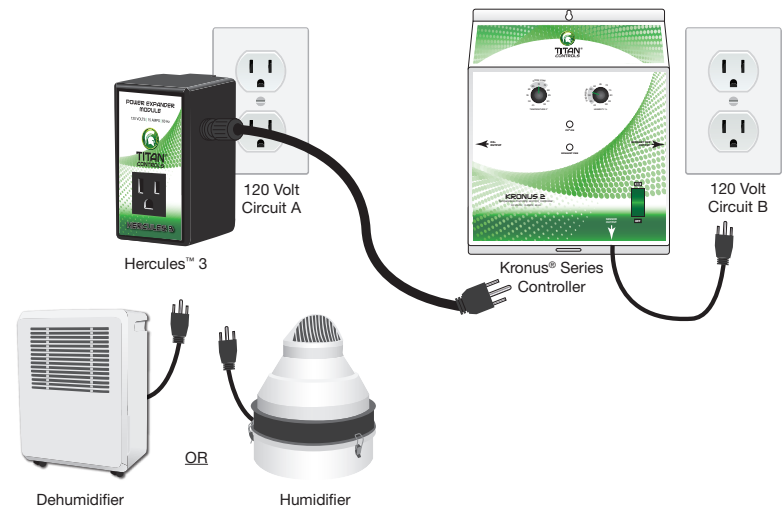
- Confirm that your power source is active and providing 120 Volts/15 Amps/ 60 Hz. to the controller.
- Check to see that the voltage output from your environmental controller, timer or other activation device is providing power to the trigger cord set. Use a test meter or night light to verify.
- Verify that the equipment being operated is functioning properly by using another circuit with known 120 Volt/15 Amp/ 60 Hz. power flowing from it.
- If your circuit breaker trips, check your equipment and make sure that they are no shorts or grounding issues with it.
- Should you not be able to resolve the problem with the Hercules™ 3, please contact our Technical Service Representative to assist you.

## Controller Specifications

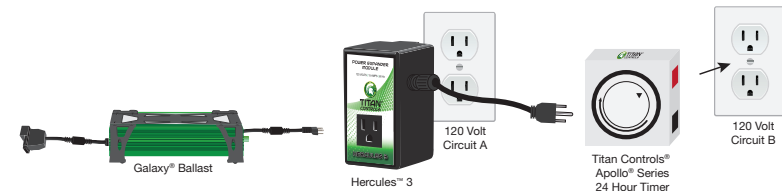
- Size = 4"H x 2"W x 2.5"D
- Weight = .9 Lbs.
- Voltage Input = 120 Volts
- Voltage Output = 120 Volts
- Maximum Amperage = 15 Amps
- Maximum Operating Amperage = 12.5 Amps (continuous load)
- Hertz = 60 Hz.
- Storage Temperature = 32° F (0° C) to 115° F (46° C)
- Operating Temperature = 32° F (0° C) to 105° F (40.5° C)

## Installation Examples

### Controlling a Humidifier or Dehumidifier



### Controlling a Ballast



### Controlling a Pump, CO<sub>2</sub> Regulator or Inline Fan

