

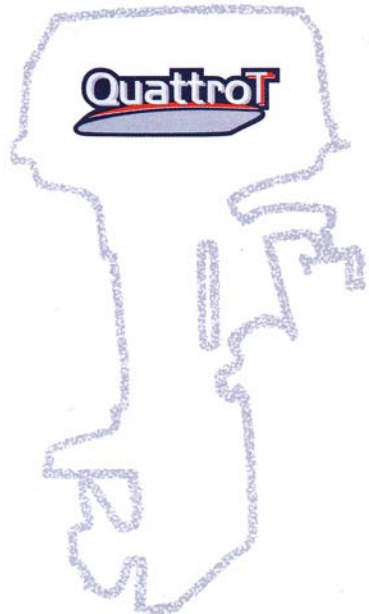
Engine controls

Production year 2010

Production année 2010

PARTS CATALOGUE

CATALOGUE DE PIÈCES DÉTACHÉES



A1

FOREWORD

This Parts Catalogue is related to the parts for the model(s) on the cover page. When you are ordering replacement parts, please refer to this Parts Catalogue and quote both part numbers and part names correctly.

1. Modifications or additions which have been made after the issue of the Parts Catalogue will be announced in the Parts News.

It is advisable that you make the necessary corrections to the Parts Catalogue according to the Parts News.

2. Abbreviations

The following abbreviations are used in this Parts Catalogue.

“UR” Use specified parts number.

“UN” Use as many as needed.

“AP” Alternate Parts

“LM” Locally Made (Parts need to be ordered locally)

“F#” Frame No. (Applicable machine No.)

“O/S” Over Size

3. The number of components for assembly

- Parts, which are to be supplied in an assembly, are listed with a dot (.) in front of the part name as shown below.
- The numeral appearing to the right of each component part indicates the quantity of parts for each assembly unit.

PART NO.	DESCRIPTION	Q'TY	REMARKS
2F5-83310-60	FRONT FLASHER LIGHT ASSY	2	
115-83311-60	.BULB (6V-18W)	1	

4. Applicable colours of graphics are represented in the “REMARKS” as shown below.

PART NO.	DESCRIPTION	Q'TY	REMARKS
2N4-24110-00-X5	FUEL TANK COMP.	2	MXR
3J1-24240-10	.GRAPHIC, FUEL TANK	1	FOR MXR

5. Note that the illustrations for reference in finding parts numbers are not to be used for assembling. When assembling, please use the applicable service manual.

6. The asterisk (*) before a reference number indicates modified items after the first edition.

REMOTE CONTROL BOX SPECIFICATION LIST (703 TYPE)

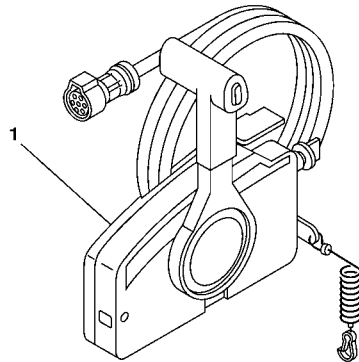
TYPE : 703	MECHANICAL SPECIFICATION									
PART NO.	LIST UP SEC.	THROTTLE MOTION		HANDLE POSITION		NEUTRAL LOCK	TIGHTENING		LEVER TYPE	
	FIG.NO-REF.NO.	PULL	PUSH	RIGHT	LEFT		BOLT,NUT	ROUND WOOD SCREW	SINGLE	TWIN
703-48204-13	2-1	○	*	*	○	○	○	*	○	*
703-48210-16		○	*	○	*	○	○	*	○	*
703-48220-15		○	*	○	*	○	○	*	*	○
703-48230-15		○	*	○	*	○	○	*	○	*
703-48250-17		○	*	○	*	○	○	*	○	*
703-48272-17		○	*	○	*	○	○	*	○	*
703-48201-16		*	○	○	*	○	○	*	○	*
703-48201-A3		*	○	○	*	○	○	*	○	*
703-48202-15		*	○	○	*	○	○	*	*	○
703-48203-15		*	○	○	*	○	○	*	○	*
703-48203-A3		*	○	○	*	○	○	*	○	*
703-48205-17		*	○	○	*	○	○	*	○	*
703-48205-A5		*	○	○	*	○	○	*	○	*
703-48207-17		*	○	○	*	○	○	*	○	*
703-48207-A5		*	○	○	*	○	○	*	○	*
703-48208-A4		*	○	○	*	○	○	*	*	○

REMOTE CONTROL BOX SPECIFICATION LIST (703 TYPE)

TYPE : 703	ELECTRICAL SPECIFICATION								
PART NO.	ENGINE STOP SW.		MAIN SWITCH		PT/T SW.	WIRE HARNESS COUPLER TYPE	BUZZER		NEUTRAL SW.
	PULL PLATE	PUSH BUTTON	CHOKE MODEL	PRIME START MODEL			ANALOG	DIGITAL	
703-48204-13	688-82575-01	*	705-82510-33	*	*	7P	703-83383-02	*	703-82540-00
703-48210-16	688-82575-01	*	703-82510-43	*	*	10P	703-83383-02	*	703-82540-00
703-48220-15	688-82575-01	*	703-82510-33	*	*	7P	703-83383-02	*	703-82540-00
703-48230-15	688-82575-01	*	703-82510-33	*	*	7P	703-83383-02	*	703-82540-00
703-48250-17	688-82575-01	*	703-82510-43	*	703-82563-02	10P	703-83383-02	*	703-82540-00
703-48272-17	688-82575-01	*	703-82510-43	*	703-82563-12	10P	703-83383-02	*	703-82540-00
703-48201-16	688-82575-01	*	703-82510-43	*	*	10P	703-83383-02	*	703-82540-00
703-48201-A3	688-82575-01	*	*	703-82510-12	*	10P	*	703-83383-B0	703-82540-00
703-48202-15	688-82575-01	*	703-82510-33	*	*	7P	703-83383-02	*	703-82540-00
703-48203-15	688-82575-01	*	703-82510-33	*	*	7P	703-83383-02	*	703-82540-00
703-48203-A3	688-82575-01	*	*	703-82510-03	*	7P	*	703-83383-B0	703-82540-00
703-48205-17	688-82575-01	*	703-82510-43	*	703-82563-02	10P	703-83383-02	*	703-82540-00
703-48205-A5	688-82575-01	*	*	703-82510-12	703-82563-02	10P	*	703-83383-B0	703-82540-00
703-48207-17	688-82575-01	*	703-82510-43	*	703-82563-12	10P	703-83383-02	*	703-82540-00
703-48207-A5	688-82575-01	*	*	703-82510-12	703-82563-12	10P	*	703-83383-B0	703-82540-00
703-48208-A4	688-82575-01	*	*	703-82510-12	*	10P	*	703-83383-B0	703-82540-00

703 REMOTE CONTROL

Part No.	Throttle		Choke	PT/T	Wire-harness		Mount		Remarks
	Push	Pull			7pin	10pin	R	L	
703-48204-13		1	1		1			1	
703-48210-16		1	1			1	1		
703-48220-15		1	1		1				For Twin-application
703-48230-15		1	1		1		1		For analog gauge only
703-48250-17		1	1	1		1	1		
703-48272-17		1	1	1		1	1		For additional tilt switch
703-48201-16	1		1			1	1		
703-48201-A3	1					1	1		
703-48202-15	1		1		1		1		For Twin-application
703-48203-15	1		1			1	1		
703-48203-A3	1				1		1		For analog gauge only
703-48205-17	1		1	1		1	1		
703-48205-A5	1			1		1	1		
703-48207-17	1		1	1		1	1		For additional tilt switch
703-48207-A5	1			1		1	1		
703-48208-A4	1					1	1		For Twin-application



601R10R-H020

FIG. 2 REMOTE CONTROL BOX 2 BOITIER DE COMMANDE A DISTANCE

REF. NO.	PART NO. N° PIECES	DESCRIPTION DESCRIPTION	602R				REMARKS REMARQUES
1	703-48204-13	REMOTE CONTROL ASSY (7P) BOITIER DE COMMANDE A DISTANCE	1				UR WITHOUT PT/T SW. UR WITHOUT PT/T SW.
	703-48210-16	REMOTE CONTROL ASSY (10P) BOITIER DE COMMANDE A DISTANCE	1				UR WITHOUT PT/T SW. UR WITHOUT PT/T SW.
	703-48220-15	REMOTE CONTROL ASSY (7P) BOITIER DE COMMANDE A DISTANCE	1				UR FOR TWIN UR FOR TWIN
	703-48230-15	REMOTE CONTROL ASSY (7P) BOITIER DE COMMANDE A DISTANCE	1				UR WITHOUT PT/T SW. UR WITHOUT PT/T SW.
	703-48250-17	REMOTE CONTROL ASSY (10P) BOITIER DE COMMANDE A DISTANCE	1				UR WITH PT/T SW. UR WITH PT/T SW.
	703-48272-17	REMOTE CONTROL ASSY (10P) BOITIER DE COMMANDE A DISTANCE	1				UR WITH PT/T SW. UR WITH PT/T SW.
	703-48201-16	REMOTE CONTROL ASSY (10P) BOITIER DE COMMANDE A DISTANCE	1				UR WITHOUT PT/T SW. UR WITHOUT PT/T SW.
	703-48201-A3	REMOTE CONTROL ASSY (10P) BOITIER DE COMMANDE A DISTANCE	1				UR WITHOUT PT/T SW. UR WITHOUT PT/T SW.
	703-48202-15	REMOTE CONTROL ASSY (7P) BOITIER DE COMMANDE A DISTANCE	1				UR FOR TWIN UR FOR TWIN
	703-48203-15	REMOTE CONTROL ASSY (7P) BOITIER DE COMMANDE A DISTANCE	1				UR WITHOUT PT/T SW. UR WITHOUT PT/T SW.
	703-48203-A3	REMOTE CONTROL ASSY (7P) BOITIER DE COMMANDE A DISTANCE	1				UR WITHOUT PT/T SW. UR WITHOUT PT/T SW.
	703-48205-17	REMOTE CONTROL ASSY (10P) BOITIER DE COMMANDE A DISTANCE	1				UR WITH PT/T SW. UR WITH PT/T SW.
	703-48205-A5	REMOTE CONTROL ASSY (10P) BOITIER DE COMMANDE A DISTANCE	1				UR WITH PT/T SW. UR WITH PT/T SW.
	703-48207-17	REMOTE CONTROL ASSY (10P) BOITIER DE COMMANDE A DISTANCE	1				UR WITH PT/T SW. UR WITH PT/T SW.
	703-48207-A5	REMOTE CONTROL ASSY (10P) BOITIER DE COMMANDE A DISTANCE	1				UR WITH PT/T SW. UR WITH PT/T SW.
	703-48208-A4	REMOTE CONTROL ASSY (10P) BOITIER DE COMMANDE A DISTANCE	1				UR FOR TWIN UR FOR TWIN

REMOTE CONTROL BOX SPECIFICATION LIST (704 TYPE)

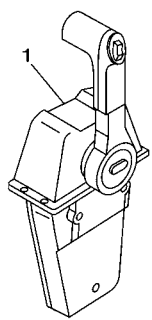
TYPE : 704	MECHANICAL SPECIFICATION								
TYPE : 704 (SINGLE)	LIST UP SEC.	HANDLE POSITION		SHIFT MOTION		THROTTLE MOTION		LEVER TYPE	
PART NO.	FIG.NO.-REF.NO.	RIGHT	LEFT	PULL	PUSH	PULL	PUSH	SINGLE	TWIN
704-48205-B1	3-1	*	○	○	*	*	○	○	*
704-48203-P1	3-2	*	○	○	*	*	○	○	*
704-48205-P1		*	○	○	*	*	○	○	*
704-48206-P1		○	*	○	*	*	○	○	*
TYPE : 704 (TWIN)	LIST UP SEC.	HANDLE POSITION		SHIFT MOTION		THROTTLE MOTION		LEVER TYPE	
PART NO.	FIG.NO.-REF.NO.	RIGHT	LEFT	PULL	PUSH	PULL	PUSH	SINGLE	TWIN
704-48207-P1	3-3	*	*	○	*	*	○	*	○

REMOTE CONTROL BOX SPECIFICATION LIST (704 TYPE)

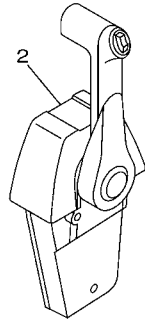
TYPE : 704	ELECTRICAL SPECIFICATION					
TYPE : 704 (SINGLE)	PT/T SW.			NEUTRAL SW.	CABLE TERMINAL	
PART NO.	BODY SW.	BODY SW.	GRIP SW.		MM	INCH
704-48205-B1	*	*	704-82563-41	704-82540-20	*	○
704-48203-P1	*	*	*	704-82540-20	*	○
704-48205-P1	*	*	704-82563-41	704-82540-20	*	○
704-48206-P1	*	*	704-82563-41	704-82540-20	*	○
TYPE : 704 (TWIN)	PT/T SW.			NEUTRAL SW.	CABLE TERMINAL	
PART NO.	BODY SW.	BODY SW.	GRIP SW.		MM	INCH
704-48207-P1	704-82563-H1	704-82563-J1	704-82563-51	704-82540-30	*	○

704 REMOTE CONTROL

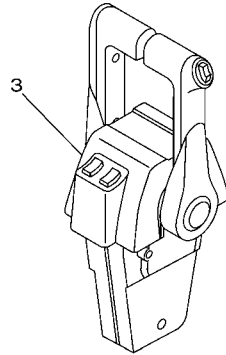
Part No.	Throttle		PTT	Lever			Remarks
	Push	Pull		R	L	Twin	
704-48205-B1	1		1		1		Standard
704-48203-P1	1				1		Premium
704-48205-P1	1		1		1		Premium
704-48206-P1	1		1	1			Premium
704-48207-P1	1		1			1	Premium



Standard single

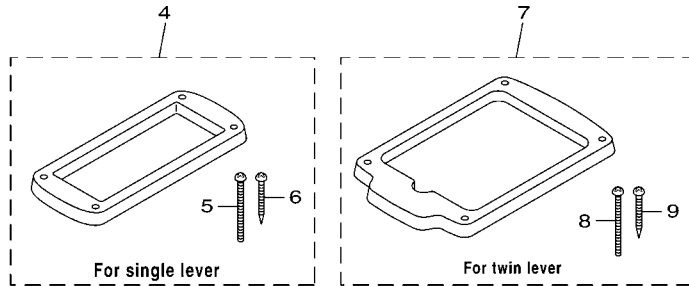


Premium single



Premium twin

Part No.	Remarks
704-48293-00	For Single lever, Standard
704-48293-20	For Single lever, Premium
704-48293-30	For Twin lever, Premium

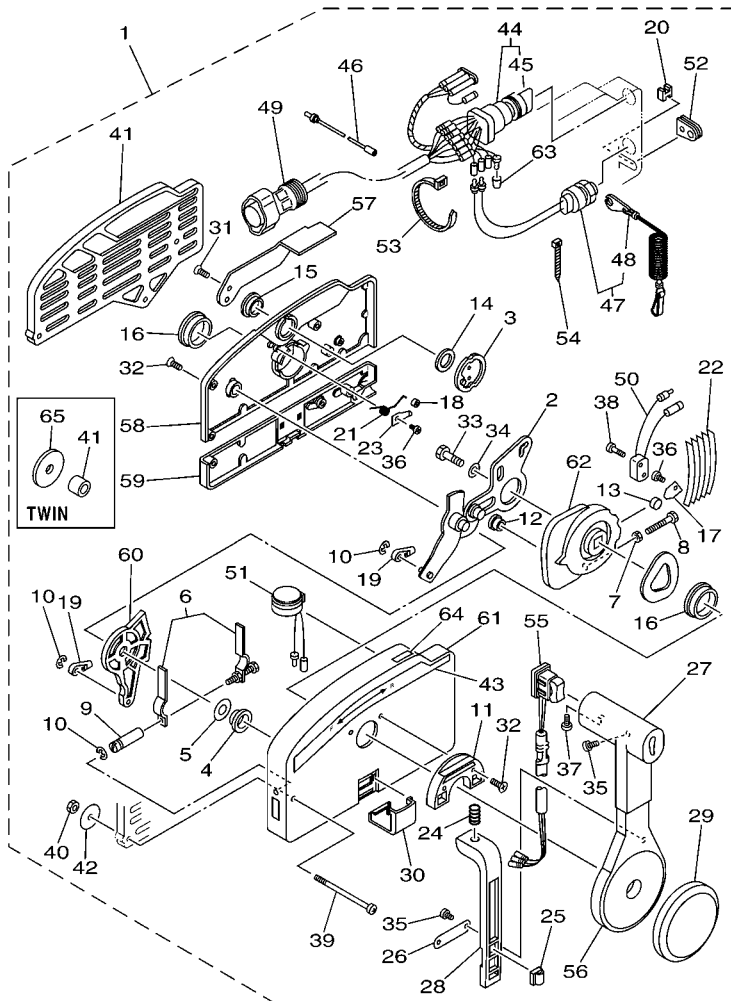


6011100-G030

FIG. 3 REMOTE CONTROL BOX 3 BOITIER DE COMMANDE A DISTANCE

REF. NO.	PART NO. N° PIECES	DESCRIPTION DESCRIPTION	602R			REMARKS REMARQUES
1	704-48205-B1	REMOTE CONTROL ASSY BOITIER DE COMMANDE A DISTANCE	1			WITH PT/T SW. WITH PT/T SW.
2	704-48203-P1	REMOTE CONTROL ASSY (RIGHT) BOITIER DE COMMANDE A DISTANCE	1			UR WITHOUT PT/T SW. UR WITHOUT PT/T SW.
	704-48205-P1	REMOTE CONTROL ASSY (RIGHT) BOITIER DE COMMANDE A DISTANCE	1			UR WITH PT/T SW. UR WITH PT/T SW.
	704-48206-P1	REMOTE CONTROL ASSY (LEFT) BOITIER DE COMMANDE A DISTANCE	1			UR WITH PT/T SW. UR WITH PT/T SW.
3	704-48207-P1	REMOTE CONTROL ASSY BOITIER DE COMMANDE A DISTANCE	1			WITH PT/T SW. WITH PT/T SW.
4	704-48293-00	SPACER, REMOTE CONTROL ENTRETOISE	1			UR FOR SINGLE UR FOR SINGLE
	704-48293-20	SPACER, REMOTE CONTROL ENTRETOISE	1			UR FOR SINGLE UR FOR SINGLE
5	98580-05060	.SCREW, PAN HEAD .VIS	4			
6	97780-50145	.SCREW, TAPPING .VIS, TETE BOMBEE	4			
7	704-48293-30	SPACER, REMOTE CONTROL ENTRETOISE	1			FOR TWIN FOR TWIN
8	98580-05060	.SCREW, PAN HEAD .VIS	4			
9	97780-50145	.SCREW, TAPPING .VIS, TETE BOMBEE	4			

703 REMOTE CONTROL (PUSH TO OPEN TYPE)



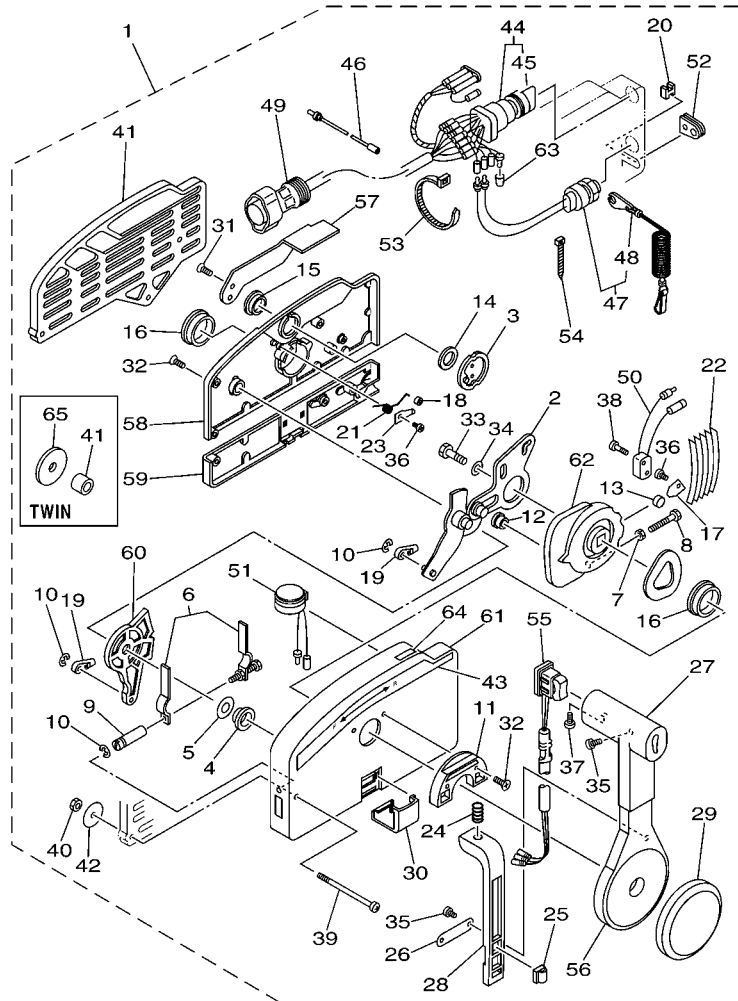
6011100-G080

- *1: FOR 703-48201-16/ 703-48205-17/ 703-48207-17
- *2: FOR 703-48201-A3/ 703-48205-A5/ 703-48207-A5/ 703-48208-A4
- *3: FOR 703-48202-15/ 703-48203-15
- *4: FOR 703-48201-16/ 703-48202-15/ 703-48203-15/ 703-48205-17/ 703-48207-17
- *5: FOR 703-48201-A3/ 703-48203-A3/ 703-48205-A5/ 703-48207-A5/ 703-48208-A4
- *6: FOR 703-48201-A3/ 703-48208-A4
- *7: FOR 703-48203-A3/ 703-48205-A5/ 703-48207-A5

FIG. 8 REMOTE CONTROL ASSY 4 BOITIER DE COMMANDE A DISTANCE

REF. NO.	PART NO. N° PIECES	DESCRIPTION DESCRIPTION	602R			REMARKS REMARQUES
1	703-48201-16	REMOTE CONTROL ASSY (10P) BOITIER DE COMMANDE A DISTANCE	1			UR WITHOUT PT/T SW. UR WITHOUT PT/T SW.
	703-48201-A3	REMOTE CONTROL ASSY (10P) BOITIER DE COMMANDE A DISTANCE	1			UR WITHOUT PT/T SW. UR WITHOUT PT/T SW.
	703-48202-15	REMOTE CONTROL ASSY (7P) BOITIER DE COMMANDE A DISTANCE	1			UR FOR TWIN UR FOR TWIN
	703-48203-15	REMOTE CONTROL ASSY (7P) BOITIER DE COMMANDE A DISTANCE	1			UR WITHOUT PT/T SW. UR WITHOUT PT/T SW.
	703-48203-A3	REMOTE CONTROL ASSY (7P) BOITIER DE COMMANDE A DISTANCE	1			UR WITHOUT PT/T SW. UR WITHOUT PT/T SW.
	703-48205-17	REMOTE CONTROL ASSY (10P) BOITIER DE COMMANDE A DISTANCE	1			UR WITH PT/T SW. UR WITH PT/T SW.
	703-48205-A5	REMOTE CONTROL ASSY (10P) BOITIER DE COMMANDE A DISTANCE	1			UR WITH PT/T SW. UR WITH PT/T SW.
	703-48207-17	REMOTE CONTROL ASSY (10P) BOITIER DE COMMANDE A DISTANCE	1			UR WITH PT/T SW. UR WITH PT/T SW.
	703-48207-A5	REMOTE CONTROL ASSY (10P) BOITIER DE COMMANDE A DISTANCE	1			UR WITH PT/T SW. UR WITH PT/T SW.
	703-48208-A4	REMOTE CONTROL ASSY (10P) BOITIER DE COMMANDE A DISTANCE	1			UR FOR TWIN UR FOR TWIN
2	703-48261-01	.ARM, THROTTLE .BRAS, ACCELERATION	1			
3	703-48153-00	.SHAFT, FREE ACCEL. .AXE	1			
4	703-48235-00	.BUSHING .COUSSINET	1			
5	703-48268-00	.SPACER .ENTRETOISE	1			
6	703-48264-00	.FRICTION, THROTTLE .FRICTION, ACCELERATION	1			
7	95380-05600	.NUT .ECROU	1			
8	97380-05025	.BOLT .BOULON, HEXAGONAL	1			
9	703-48265-00	.SHAFT, FRICTION .AXE, COPILOTE	1			
10	93430-06024	.CIRCLIP .CLIPS	3			
11	703-48245-00	.PLATE, LOCK .PLAQUE, VERROU	1			
12	703-48252-00	.ROLLER, CAM .POULIE	1			
13	701-48248-00	.ROLLER, FREE ACCEL. .POULIE	1			
14	703-48198-00	.WASHER, WAVE .RONDELLE, ELASTIQUE ONDULEE	1			
15	703-48243-00	.BUSHING .COUSSINET	1			
16	703-48236-00	.BUSHING 1 .POULIE	2			
17	703-48189-00	.RETAINER .FLASQUE	1			
18	703-48234-00	.ROLLER, DETENT .POULIE	1			

703 REMOTE CONTROL (PUSH TO OPEN TYPE)



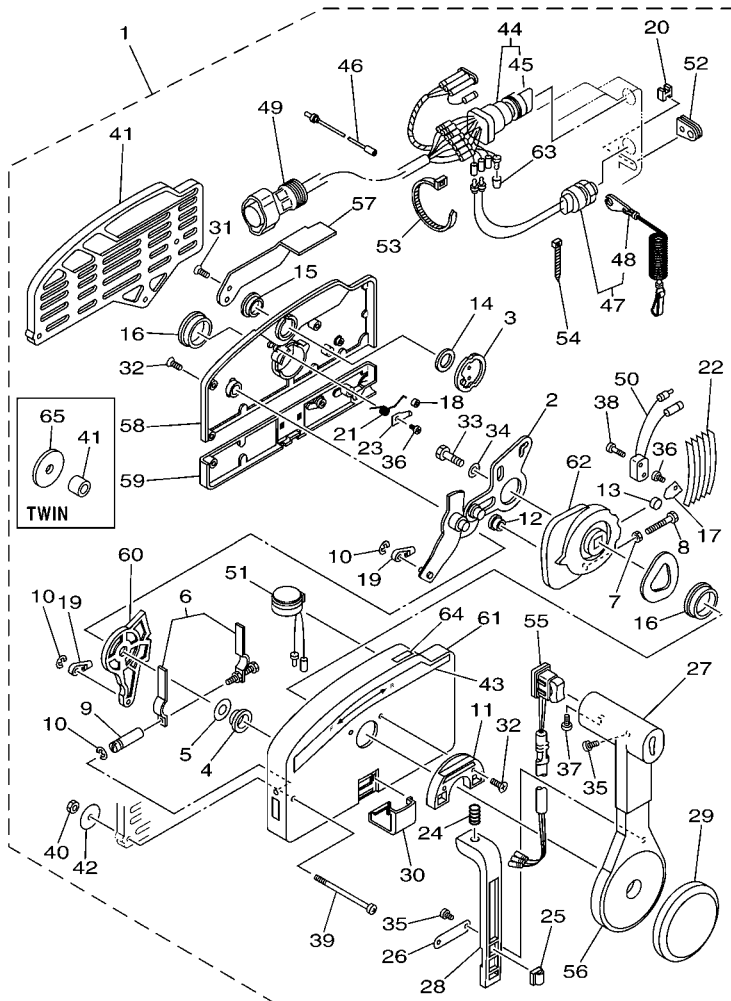
6011100-G080

- *1: FOR 703-48201-16/ 703-48205-17/ 703-48207-17
- *2: FOR 703-48201-A3/ 703-48205-A5/ 703-48207-A5/ 703-48208-A4
- *3: FOR 703-48202-15/ 703-48203-15
- *4: FOR 703-48201-16/ 703-48202-15/ 703-48203-15/ 703-48205-17/ 703-48207-17
- *5: FOR 703-48201-A3/ 703-48203-A3/ 703-48205-A5/ 703-48207-A5/ 703-48208-A4
- *6: FOR 703-48201-A3/ 703-48208-A4
- *7: FOR 703-48203-A3/ 703-48205-A5/ 703-48207-A5

FIG. 8 REMOTE CONTROL ASSY 4 BOITIER DE COMMANDE A DISTANCE

REF. NO.	PART NO. N° PIECES	DESCRIPTION DESCRIPTION	602R		REMARKS REMARQUES
19	703-48345-01	.CABLE END, REMOTE CONTROL 2 .CHAPE CABLE	2		
20	703-48358-00	.ANCHOR, CABLE .COLLIER	1		
21	703-48244-00	.SPRING, FREE ACCEL. .RESSORT	1		
22	703-48238-00	.SPRING, DETENT .RESSORT	5		
23	703-48246-00	.SPACER .ENTRETOISE	1		
24	703-48227-00	.SPRING, NEUTRAL LOCK .RESSORT	1		
25	703-82594-00	.CLAMP .BRIDE	1		WITH PT/T SW. WITH PT/T SW.
26	703-48226-00	.PLATE, STOPPER .PLAQUETTE	1		
27	703-48222-00	.GRIP, CONTROL LEVER .POIGNEE, COMMANDE LEVIER	1		FOR SINGLE FOR SINGLE
	703-48222-10	.GRIP, CONTROL LEVER .POIGNEE, COMMANDE LEVIER	1		FOR TWIN FOR TWIN
28	703-48223-00	.LOCK, NEUTRAL .VERROU, NEUTRAL	1		
29	703-48225-00	.COVER .COUVERCLE	1		
30	703-48219-00	.COVER, LEAD .COUVERCLE	1		
31	703-48281-00	.SCREW .VIS	2		
32	703-48282-00	.SCREW .VIS	7		
33	97380-08030	.BOLT .BOULON, HEXAGONAL	1		
34	92990-08600	.WASHER, PLATE .RONDELLE, PLATE	1		
35	98580-04010	.SCREW, PAN HEAD .VIS	3		FOR SINGLE FOR SINGLE
	98580-04010	.SCREW, PAN HEAD .VIS	2		FOR TWIN FOR TWIN
36	98580-04006	.SCREW, PAN HEAD .VIS	2		
37	98580-05010	.SCREW, PAN HEAD .VIS	1		
38	98580-03015	.SCREW, PAN HEAD .VIS	2		
39	703-48291-10	.SCREW (M6) .VIS (M6)	3		
40	95380-06600	.NUT, HEXAGON .ECROU	3		
41	703-48293-10	.SPACER, REMOTE CONTROL .ENTRETOISE	1		FOR SINGLE FOR SINGLE
	703-48293-00	.SPACER, REMOTE CONTROL .ENTRETOISE	3		FOR TWIN FOR TWIN
42	701-48287-00	.WASHER .RONDELLE	3		

703 REMOTE CONTROL (PUSH TO OPEN TYPE)

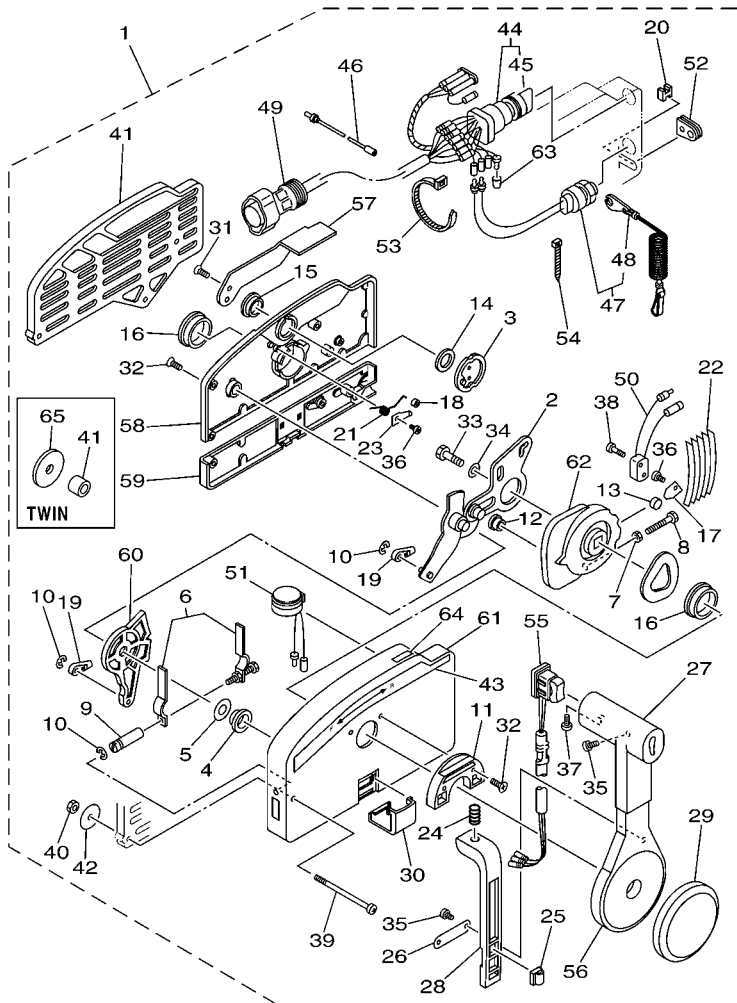


- 6011100-G080
- *1: FOR 703-48201-16/ 703-48205-17/ 703-48207-17
 - *2: FOR 703-48201-A3/ 703-48205-A5/ 703-48207-A5/ 703-48208-A4
 - *3: FOR 703-48202-15/ 703-48203-15
 - *4: FOR 703-48201-16/ 703-48202-15/ 703-48203-15/ 703-48205-17/ 703-48207-17
 - *5: FOR 703-48201-A3/ 703-48203-A3/ 703-48205-A5/ 703-48207-A5/ 703-48208-A4
 - *6: FOR 703-48201-A3/ 703-48208-A4
 - *7: FOR 703-48203-A3/ 703-48205-A5/ 703-48207-A5

FIG. 8 REMOTE CONTROL ASSY 4 BOITIER DE COMMANDE A DISTANCE

REF. NO.	PART NO. N° PIECES	DESCRIPTION DESCRIPTION	602R		REMARKS REMARQUES
43	703-48215-00	.GRAPHIC .ADHESIF	1		
44	703-82510-43	.MAIN SWITCH ASSY .CONTACTEUR A CLEF COMPLET	1		*1
	703-82510-12	.MAIN SWITCH ASSY .CONTACTEUR A CLEF COMPLET	1		*2
	703-82510-33	.MAIN SWITCH ASSY .CONTACTEUR A CLEF COMPLET	1		*3
	703-82510-03	.MAIN SWITCH ASSY .CONTACTEUR A CLEF COMPLET	1		FOR 703-48203-A3 FOR 703-48203-A3
45	703-82577-00	..CAP, KEY ..CABOCHON	1		FOR 703-82510-33/43 FOR 703-82510-33/43
	676-82577-00	..CAP, KEY ..CABOCHON	1		FOR 703-82510-03/12 FOR 703-82510-03/12
46	703-82531-00	.WIRE, LEAD (L70) .FIL (L70)	1		
47	688-82575-01	.ENGINE STOP SWITCH ASSY .COUPE CIRCUIT CPLT	1		
48	682-82556-00	..LANYARD, STOP SWITCH ..PLAQUETTE	1		
49	688-8258A-20	.EXTENSION, WIRE HARNESS (4.9M) .EXTENSION, FAISCEAU DE FILS (4	1		(10P) (10P)
	688-82586-21	.EXTENSION, WIRE HARNESS (4.9M) .EXTENSION, FAISCEAU DE FILS (4	1		(7P) (7P)
50	703-82540-00	.NEUTRAL SWITCH ASSY .CONTACTEUR DE POINT-MORT	1		
51	703-83383-02	.BUZZER .RONFLEUR	1		*4
	703-83383-B0	.BUZZER .RONFLEUR	1		*5
52	703-48284-00	.GRÖMMET .PASSE-FIL	1		
	703-48284-10	.GROMMET .PASSE-FIL	1		FOR 703-48207-17/A5 FOR 703-48207-17/A5
53	703-82591-00	.BAND .COLLIER	1		
	703-82591-00	.BAND .COLLIER	3		FOR 703-48207-17/A5 FOR 703-48207-17/A5
54	703-82592-00	.BAND .COLLIER	1		
55	703-48224-00	.COVER, CONTROL LEVER .COUVERCLE	1		WITHOUT PT/T SW. WITHOUT PT/T SW.
	703-82563-02	.TRIM & TILT SWITCH ASSY .INCLINER ET PARER COMMUTATEUR	1		FOR 703-48205-17/A5 FOR 703-48205-17/A5
	703-82563-12	.TRIM & TILT SWITCH ASSY .INCLINER ET PARER COMMUTATEUR	1		FOR 703-48207-17/A5 FOR 703-48207-17/A5
56	703-48221-00	.LEVER, CONTROL .LEVIER, COMMANDE	1		
57	703-48152-00	.KNOB, FREE ACCEL. .BOUTON	1		
58	703-48212-00	.BACK PLATE 1 .PLAQUETTE 1	1		
59	703-48213-00	.BACK PLATE 2 .PLAQUETTE 2	1		

703 REMOTE CONTROL (PUSH TO OPEN TYPE)



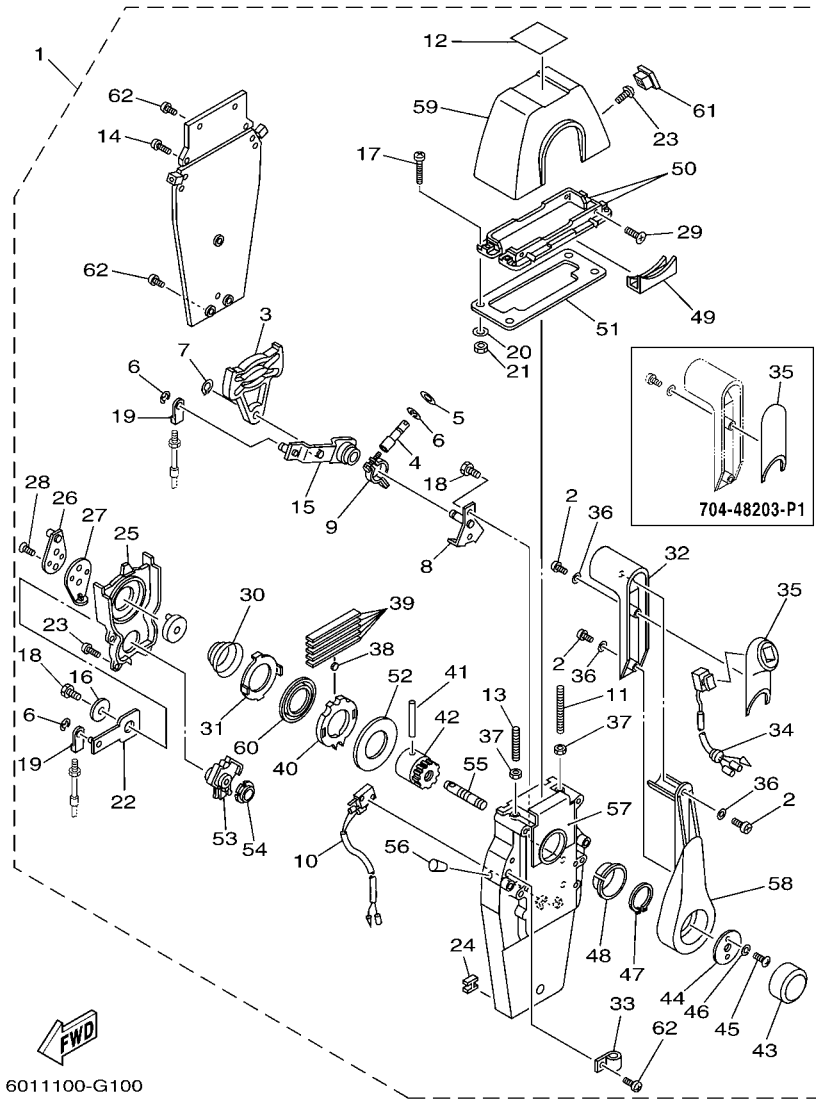
6011100-G080

- *1: FOR 703-48201-16/ 703-48205-17/ 703-48207-17
- *2: FOR 703-48201-A3/ 703-48205-A5/ 703-48207-A5/ 703-48208-A4
- *3: FOR 703-48202-15/ 703-48203-15
- *4: FOR 703-48201-16/ 703-48202-15/ 703-48203-15/ 703-48205-17/ 703-48207-17
- *5: FOR 703-48201-A3/ 703-48203-A3/ 703-48205-A5/ 703-48207-A5/ 703-48208-A4
- *6: FOR 703-48201-A3/ 703-48208-A4
- *7: FOR 703-48203-A3/ 703-48205-A5/ 703-48207-A5

FIG. 8 REMOTE CONTROL ASSY 4 BOITIER DE COMMANDE A DISTANCE

REF. NO.	PART NO. N° PIECES	DESCRIPTION DESCRIPTION	602R				REMARKS REMARQUES
60	703-48271-00	.ARM, SHIFT .BRAS	1				
61	703-48211-01	.HOUSING,1 .CORPS	1				
62	703-48232-00	.GEAR .PIGNON	1				
63	703-82542-00	.CAP .COUVERCLE	2				FOR 703-48201-16 FOR 703-48201-16
	703-82542-00	.CAP .COUVERCLE	3				*6 *6
	703-82542-00	.CAP .COUVERCLE	1				*7 *7
64	703-48218-00	.GRAPHIC .ADHESIF	1				*5 *5
65	702-48287-00	.WASHER .RONDELLE	3				FOR TWIN FOR TWIN

704 REMOTE CONTROL (PREMIUM SINGLE)

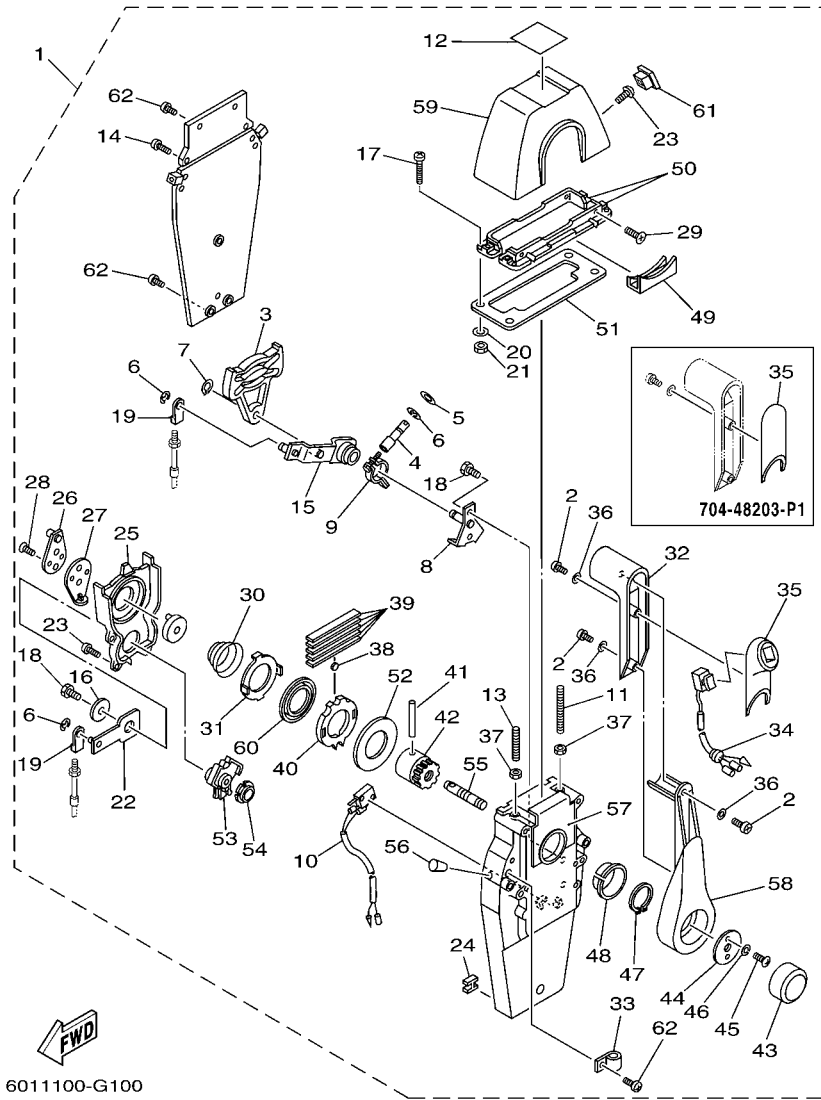


6011100-G100

FIG. 10 REMOTE CONTROL ASSY 6 BOITIER DE COMMANDE A DISTANCE

REF. NO.	PART NO. N° PIECES	DESCRIPTION DESCRIPTION	602R		REMARKS REMARQUES
1	704-48203-P1	REMOTE CONTROL ASSY (RIGHT) BOITIER DE COMMANDE A DISTANCE	1		UR WITHOUT PT/T SW. UR WITHOUT PT/T SW.
	704-48205-P1	REMOTE CONTROL ASSY (RIGHT) BOITIER DE COMMANDE A DISTANCE	1		UR WITH PT/T SW. UR WITH PT/T SW.
	704-48206-P1	REMOTE CONTROL ASSY (LEFT) BOITIER DE COMMANDE A DISTANCE	1		UR WITH PT/T SW. UR WITH PT/T SW.
2	704-48128-00	.SCREW 2 .VIS 2	3		
3	EL8-48251-00	.PLATE, CAM .PLAQUE, CAME	1		
4	704-48265-00	.SHAFT, FRICTION .AXE, COPILOTE	1		
5	701-48246-00	.SPACER .ENTRETOISE	1		
6	93430-06024	.CIRCLIP .CLIPS	4		
7	EL8-48259-00	.CIRCLIP 1 .CIRCLIP	1		
8	704-48262-00	.SHAFT, THROTTLE .AXE, ACCELERATION	1		
9	704-48264-00	.THROTTLE, FRICTION .FRICTION, ACCELERATION	1		
10	704-82540-20	.NEUTRAL SWITCH ASSY .CONTACTEUR DE POINT-MORT	1		
11	EL8-48281-00	.SCREW .VIS	1		
12	704-48215-20	.GRAPHIC .ADHESIF	1		
13	704-48281-00	.SCREW .VIS	1		
14	97890-05025	.SCREW, PAN HEAD .VIS, CRUCIFORME	2		
15	704-48261-00	.ARM, THROTTLE .BRAS, ACCELERATION	1		
16	EL8-48191-00	.WASHER 1 .RONDELLE	1		
17	704-48283-00	.SCREW .VIS	4		
18	97380-06018	.BOLT .BOULON, HEXAGONAL	3		
19	703-48345-01	.CABLE END, REMOTE CONTROL 2 .CHAPE CABLE	2		
20	704-48287-00	.WASHER .RONDELLE	4		
21	95380-05600	.NUT .ECROU	4		
22	704-48271-00	.ARM, SHIFT .BRAS	1		
23	EL8-48127-00	.SCREW 1 .VIS 1	10		
24	703-48358-00	.ANCHOR, CABLE .COLLIER	1		
25	704-48231-00	.HOUSING, GEAR .CARTER, ENGRENAGE	1		

704 REMOTE CONTROL (PREMIUM SINGLE)

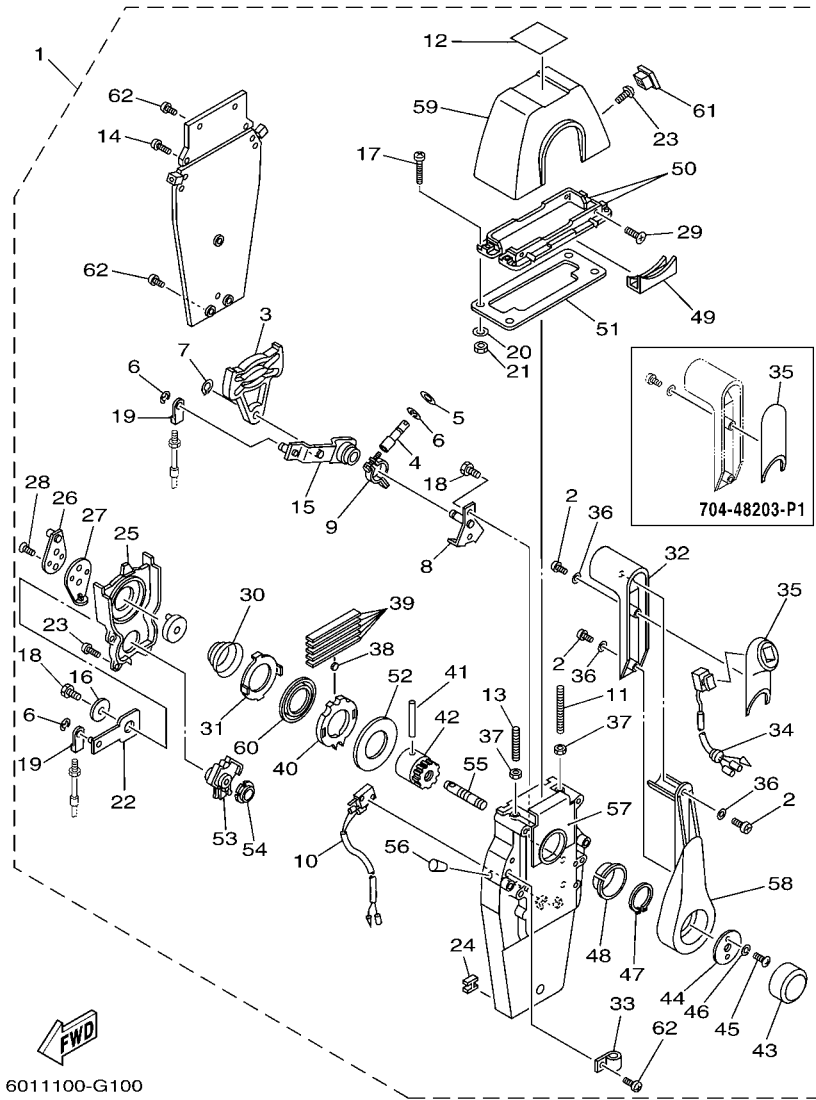


6011100-G100

FIG. 10 REMOTE CONTROL ASSY 6 BOITIER DE COMMANDE A DISTANCE

REF. NO.	PART NO. N° PIECES	DESCRIPTION DESCRIPTION	602R				REMARKS REMARQUES
26	EL8-48241-00	.ARM, DRIVE .BRAS, COMMANDE	1				
27	EL8-48254-00	.STOPPER, THROTTLE ADJUSTING .BUTEE	1				
28	92780-06020	.SCREW, FLAT HEAD .VIS A TETE FRAISEE	2				
29	98780-05018	.SCREW, FLAT HEAD .VIS A TETE FRAISEE	4				
30	EL8-48244-00	.SPRING, FREE ACCEL. .RESSORT	1				
31	EL8-48245-00	.PLATE, LOCK .PLAQUE, VERROU	1				
32	704-48222-P0	.GRIP, CONTROL LEVER .POIGNEE, COMMANDE LEVIER	1				
33	704-82594-00	.CLAMP .BRIDE	1				
34	704-82563-41	.TRIM & TILT SWITCH ASSY .INCLINER ET PAYER COMMUTATEUR	1				WITH PT/T SW. WITH PT/T SW.
35	704-48229-R0	.GRIP, CONTROL LEVER .POIGNEE, COMMANDE LEVIER	1				WITHOUT PT/T SW. WITHOUT PT/T SW.
	704-48229-P1	.GRIP, CONTROL LEVER .POIGNEE, COMMANDE LEVIER	1				WITH PT/T SW. WITH PT/T SW.
36	92990-05300	.WASHER, INTERNAL TOOTH .RONDELLE, DENTURE INTERNE	3				
37	95380-06600	.NUT, HEXAGON .ECROU	2				
38	701-48248-00	.ROLLER, FREE ACCEL. .POULIE	1				
39	704-48238-00	.SPRING, DETENT .RESSORT	5				
40	704-48232-P1	.GEAR .PIGNON	1				
41	EL8-48164-00	.PIN 2 .PION 2	1				
42	704-48242-10	.SHAFT, DRIVE .ARBRE, MOTEUR	1				
43	6X3-48225-20	.COVER .COUVERCLE	1				
44	704-48192-00	.WASHER 2 .RONDELLE 2	1				
45	97890-06018	.SCREW, PAN HEAD .VIS, CRUCIFORME	2				
46	92990-06300	.WASHER, INTERNAL TOOTH .RONDELLE, DENTURE INTERNE	2				
47	EL8-48279-00	.CIRCLIP 2 .CIRCLIP 2	1				
48	704-48234-00	.BUSHING 1 .POULIE	1				
49	704-48219-P0	.COVER, LEAD .COUVERCLE	1				
50	704-48144-10	.PLATE, STOPPER 2 .PLAQUETTE 2	2				
51	704-48176-00	.GROMMET .PASSE-FIL	1				

704 REMOTE CONTROL (PREMIUM SINGLE)



6011100-G100

FIG. 10 REMOTE CONTROL ASSY 6

BOITIER DE COMMANDE A DISTANCE

REF. NO.	PART NO. N° PIECES	DESCRIPTION DESCRIPTION	602R				REMARKS REMARQUES
52	704-48192-P0	.WASHER 2 .RONDELLE 2	1				
53	704-48233-00	.GEAR 2 .PIGNON 2	1				
54	704-48235-00	.BUSHING .COUSSINET	1				
55	704-48153-00	.SHAFT, FREE ACCEL. .AXE	1				
56	704-48166-00	.PLUG .BOUCHON	1				
57	704-48284-P0	.GROMMET .PASSE-FIL	1				
58	704-48221-P0	.LEVER, CONTROL .LEVIER, COMMANDE	1				
59	704-48119-31	.COVER .COQUILLE	1				
60	704-48178-10	.PLATE, SHIFT .PLAQUETTE	1				
61	704-48167-01	.PLUG .BOUCHON	1				
62	97890-05016	.SCREW, PAN HEAD .VIS, CRUCIFORME	2				WITHOUT PT/T SW. WITHOUT PT/T SW.
	97890-05016	.SCREW, PAN HEAD .VIS, CRUCIFORME	3				WITH PT/T SW. WITH PT/T SW.

704 REMOTE CONTROL (PREMIUM TWIN)

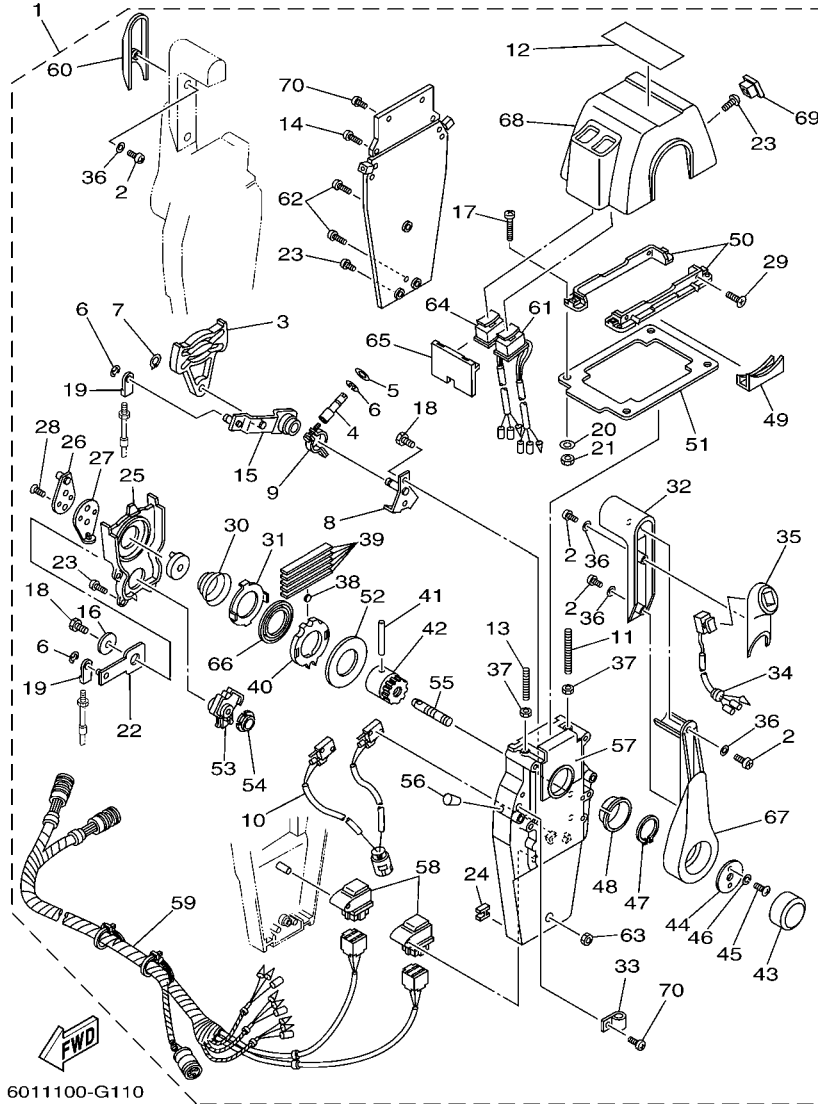


FIG. 11 REMOTE CONTROL ASSY 7 BOITIER DE COMMANDE A DISTANCE

REF. NO.	PART NO. N° PIECES	DESCRIPTION DESCRIPTION	602R			REMARKS REMARQUES
1	704-48207-P1	REMOTE CONTROL ASSY BOITIER DE COMMANDE A DISTANCE	1			WITH PT/T SW. WITH PT/T SW.
2	704-48128-00	.SCREW 2 .VIS 2	6			
3	EL8-48251-00	.PLATE, CAM .PLAQUE, CAME	2			
4	704-48265-00	.SHAFT, FRICTION .AXE, COPILOTE	2			
5	701-48246-00	.SPACER .ENTRETOISE	2			
6	93430-06024	.CIRCLIP .CLIPS	8			
7	EL8-48259-00	.CIRCLIP 1 .CIRCLIP	2			
8	704-48262-00	.SHAFT, THROTTLE .AXE, ACCELERATION	2			
9	704-48264-00	.THROTTLE, FRICTION .FRICTION, ACCELERATION	2			
10	704-82540-30	.NEUTRAL SWITCH ASSY .CONTACTEUR DE POINT-MORT	1			
11	EL8-48281-00	.SCREW .VIS	2			
12	704-48215-30	.GRAPHIC .ADHESIF	1			
13	704-48281-00	.SCREW .VIS	2			
14	97890-05025	.SCREW, PAN HEAD .VIS, CRUCIFORME	4			
15	704-48261-00	.ARM, THROTTLE .BRAS, ACCELERATION	2			
16	EL8-48191-00	.WASHER 1 .RONDELLE	2			
17	704-48283-00	.SCREW .VIS	4			
18	97380-06018	.BOLT .BOULON, HEXAGONAL	6			
19	703-48345-01	.CABLE END, REMOTE CONTROL 2 .CHAPE CABLE	4			
20	704-48287-00	.WASHER .RONDELLE	4			
21	95380-05600	.NUT .ECROU	4			
22	704-48271-00	.ARM, SHIFT .BRAS	2			
23	EL8-48127-00	.SCREW 1 .VIS 1	18			
24	703-48358-00	.ANCHOR, CABLE .COLLIER	2			
25	704-48231-00	.HOUSING, GEAR .CARTER, ENGRENAGE	2			
26	EL8-48241-00	.ARM, DRIVE .BRAS, COMMANDE	2			
27	EL8-48254-00	.STOPPER, THROTTLE ADJUSTING .BUTEE	2			

704 REMOTE CONTROL (PREMIUM TWIN)

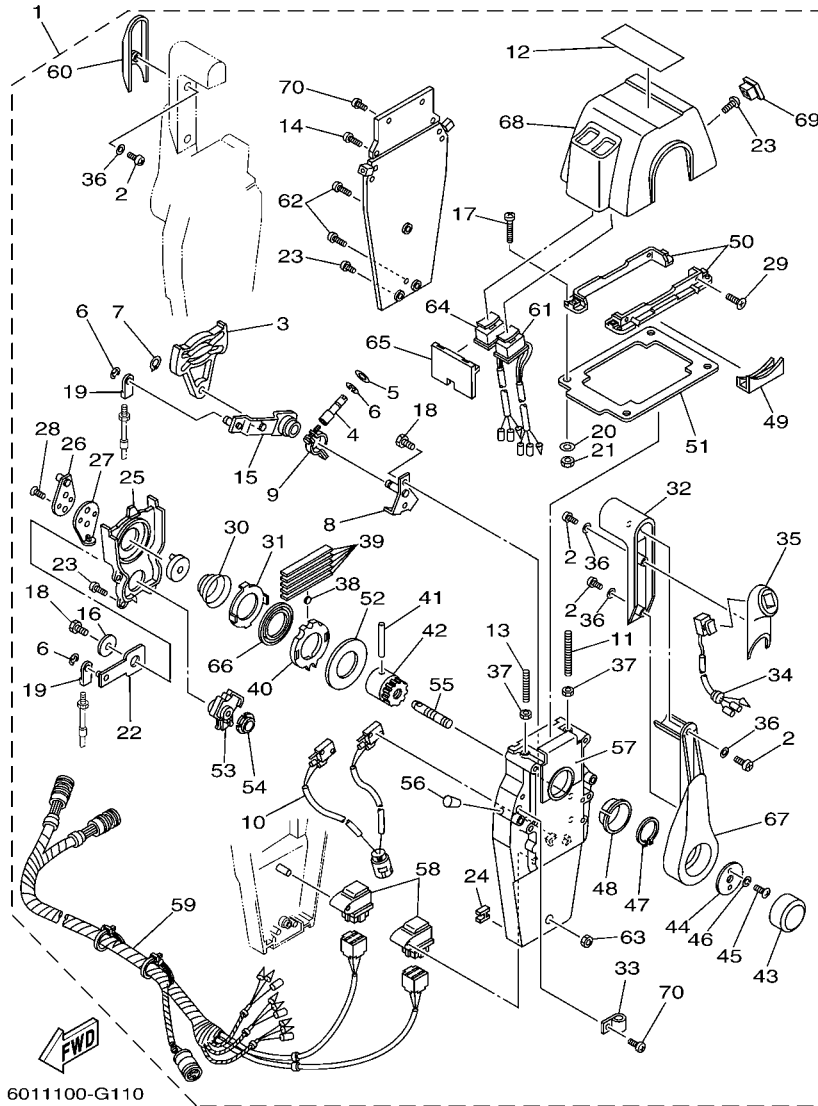


FIG. 11 REMOTE CONTROL ASSY 7 BOITIER DE COMMANDE A DISTANCE

REF. NO.	PART NO. N° PIECES	DESCRIPTION DESCRIPTION	602R			REMARKS REMARQUES
28	92780-06020	.SCREW, FLAT HEAD .VIS A TETE FRAISEE	4			
29	98780-05018	.SCREW, FLAT HEAD .VIS A TETE FRAISEE	4			
30	EL8-48244-00	.SPRING, FREE ACCEL. .RESSORT	2			
31	EL8-48245-00	.PLATE, LOCK .PLAQUE, VERROU	2			
32	704-48222-P0	.GRIP, CONTROL LEVER .POIGNEE, COMMANDE LEVIER	2			
33	704-82594-00	.CLAMP .BRIDE	1			
34	704-82563-51	.TRIM & TILT SWITCH ASSY .INCLINER ET PAYER COMMUTATEUR	1			
35	704-48229-P1	.GRIP, CONTROL LEVER .POIGNEE, COMMANDE LEVIER	1			
36	92990-05300	.WASHER, INTERNAL TOOTH .RONDELLE, DENTURE INTERNE	6			
37	95380-06600	.NUT, HEXAGON .ECROU	4			
38	701-48248-00	.ROLLER, FREE ACCEL. .POULIE	2			
39	704-48238-00	.SPRING, DETENT .RESSORT	10			
40	704-48232-P1	.GEAR .PIGNON	2			
41	EL8-48164-00	.PIN 2 .PION 2	2			
42	704-48242-10	.SHAFT, DRIVE .ARBRE, MOTEUR	2			
43	6X3-48225-20	.COVER .COUVERCLE	2			
44	704-48192-00	.WASHER 2 .RONDELLE 2	2			
45	97890-06018	.SCREW, PAN HEAD .VIS, CRUCIFORME	4			
46	92990-06300	.WASHER, INTERNAL TOOTH .RONDELLE, DENTURE INTERNE	4			
47	EL8-48279-00	.CIRCLIP 2 .CIRCLIP 2	2			
48	704-48234-00	.BUSHING 1 .POULIE	2			
49	704-48219-P0	.COVER, LEAD .COUVERCLE	2			
50	704-48144-20	.PLATE, STOPPER 2 .PLAQUETTE 2	2			
51	704-48176-10	.GROMMET .PASSE-FIL	1			
52	704-48192-P0	.WASHER 2 .RONDELLE 2	2			
53	704-48233-00	.GEAR 2 .PIGNON 2	2			
54	704-48235-00	.BUSHING .COUSSINET	2			

704 REMOTE CONTROL (PREMIUM TWIN)

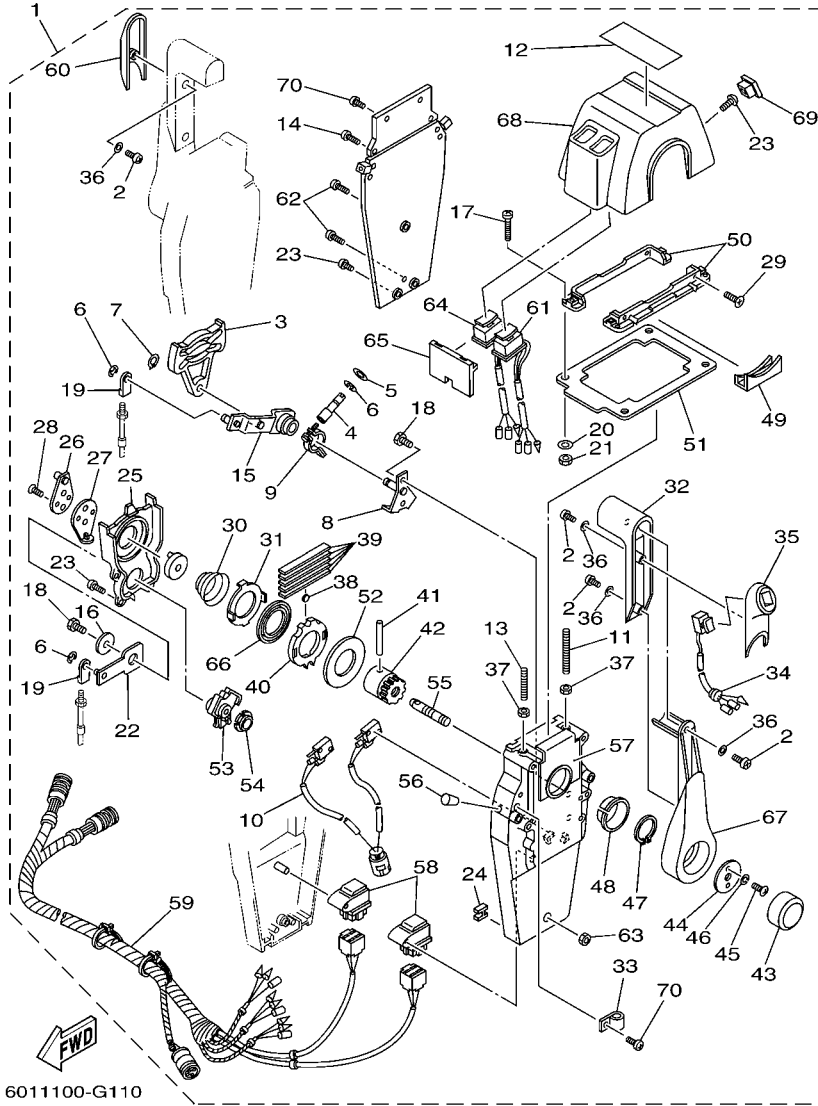
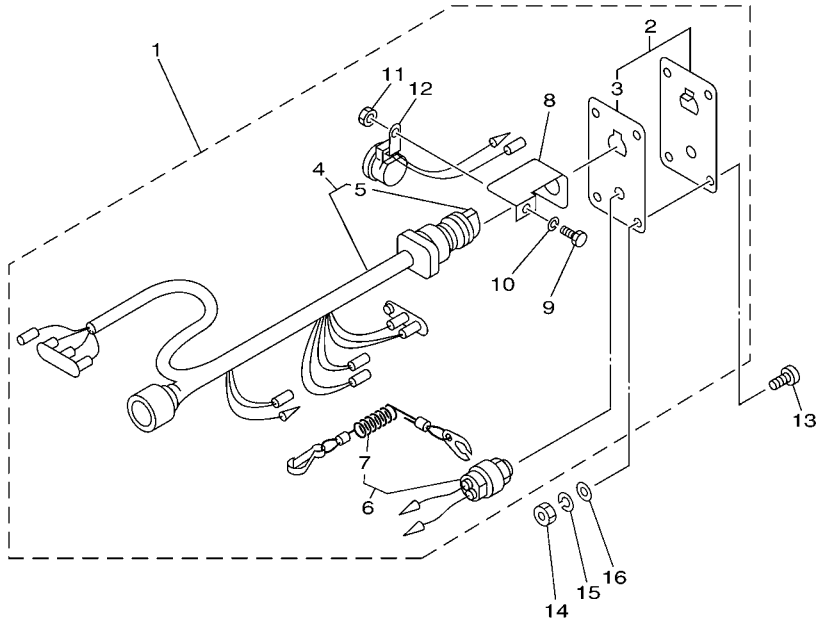


FIG. 11 REMOTE CONTROL ASSY 7 BOITIER DE COMMANDE A DISTANCE

REF. NO.	PART NO. N° PIECES	DESCRIPTION DESCRIPTION	602R				REMARKS REMARQUES
55	704-48153-00	.SHAFT, FREE ACCEL. .AXE	2				
56	704-48166-00	.PLUG .BOUCHON	2				
57	704-48284-P0	.GROMMET .PASSE-FIL	2				
58	704-81950-10	.RELAY ASSY .RELAIS COMPLET	2				
59	704-82590-10	.WIRE HARNESS ASSY .FAISCEAU DE FILS COMPLET	1				
60	704-48229-R0	.GRIP, CONTROL LEVER .POIGNEE, COMMANDE LEVIER	1				
61	704-82563-H1	.TRIM & TILT SWITCH ASSY .INCLINER ET PARER COMMUTATEUR	1				
62	704-48128-00	.SCREW 2 .VIS 2	3				
63	704-48156-00	.NUT 1 .ECROU 1	1				
64	704-82563-J1	.TRIM & TILT SWITCH ASSY .INCLINER ET PARER COMMUTATEUR	1				
65	704-48285-10	.GROMMET 2 .PASSE-FIL 2	1				
66	704-48178-00	.PLATE, SHIFT .PLAQUETTE	2				
67	704-48221-P0	.LEVER, CONTROL .LEVIER, COMMANDE	2				
68	704-48119-41	.COVER .COUILLE	1				
69	704-48167-11	.PLUG .BOUCHON	1				
70	97890-05016	.SCREW, PAN HEAD .VIS, CRUCIFORME	5				

SINGLE IG SWITCH W/ PANEL
 (FOR PRIME START or DIGITAL NETWORK GAUGE)



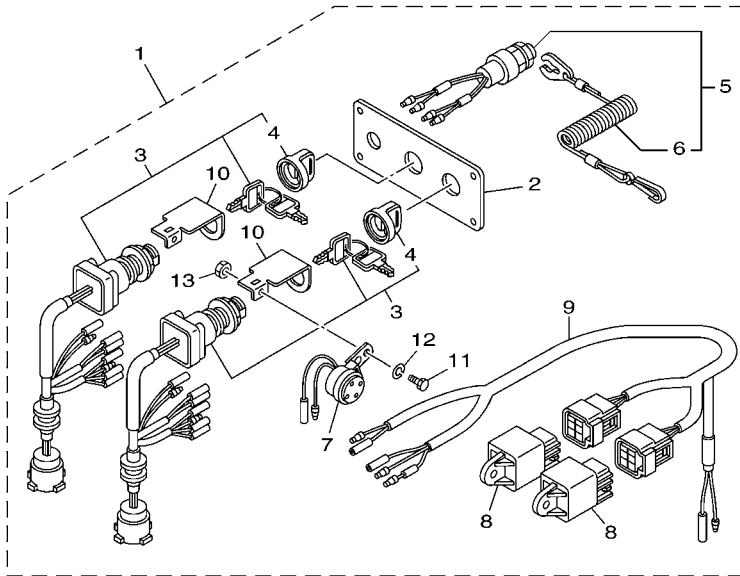

 601R10R-H240

FIG. 24 SWITCH & PANEL 2

TABLEAU DE CONTACTEUR 2

REF. NO.	PART NO. N° PIECES	DESCRIPTION DESCRIPTION	602R				REMARKS REMARQUES
1	6R5-82570-05	PANEL SWITCH ASSY PLATINE D'INTERRUPEUR CPLT	1				WITHOUT CHOKE SW. WITHOUT CHOKE SW.
2	704-82571-02	.PANEL, SWITCH .TABLEAU, CONTACTEUR	1				
3	6R5-82588-01	..PLATE ..PLAQUE	1				
4	6R5-82510-02	.MAIN SWITCH ASSY .CONTACTEUR A CLEF COMPLET	1				
5	676-82577-00	..CAP, KEY ..CABOCHON	1				
6	688-82575-01	.ENGINE STOP SWITCH ASSY .COUPE CIRCUIT CPLT	1				
7	682-82556-00	..LANYARD, STOP SWITCH ..PLAQUETTE	1				
8	64D-82581-00	.STAY, CORD CLAMP .SUPPORT, COLLIER DE CORDON	1				
9	97303-05012	.BOLT .BOULON	1				
10	92903-05100	.WASHER, SPRING .RONDELLE, GROWER	1				
11	95303-05700	.NUT .ECROU	1				
12	6R5-83383-00	.BUZZER .RONFLEUR	1				
13	90149-05M05	SCREW VIS	4				
14	95303-05600	NUT ECROU	4				
15	92903-05100	WASHER, SPRING RONDELLE, GROWER	4				
16	92903-05600	WASHER, PLATE RONDELLE, PLATE	4				

TWIN IG SWITCH
(FOR DIGITAL NETWORK GAUGE)



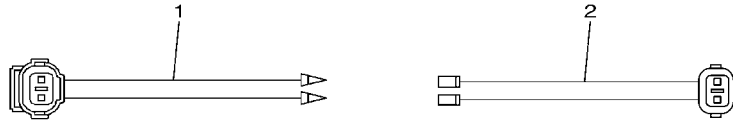
601R10R-H290

FIG. 29 SWITCH & PANEL 7

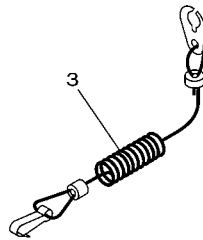
TABLEAU DE CONTACTEUR 7

REF. NO.	PART NO. N° PIECES	DESCRIPTION DESCRIPTION	602R				REMARKS REMARQUES
1	6Y8-82570-02	PANEL SW., TWIN PLATINE D'INTERRUPEUR CPLT	1				1 & 2 STATION MAIN 1 & 2 STATION MAIN
2	6Y8-82571-01	.PLATE, PANEL SWITCH .TABLEAU, CONTACTEUR	1				
3	6Y8-82510-02	.MAIN SWITCH ASSY .CONTACTEUR A CLEF COMPLET	2				
4	676-82577-00	..CAP, KEY ..CABOCHON	1				
5	6K1-82575-00	.ENGINE STOP SWITCH ASSY .COUPE CIRCUIT CPLT	1				
6	682-82556-00	..LANYARD, STOP SWITCH ..PLAQUETTE	1				
7	6R5-83383-00	.BUZZER .RONFLEUR	2				
8	68V-81950-00	.RELAY ASSY .RELAIS COMPLET	2				
9	6Y8-82507-00	.LEAD, IGNITION SWITCH RELAY .FIL	1				
10	64D-82581-00	.STAY, CORD CLAMP .SUPPORT, COLLIER DE CORDON	2				
11	97303-05012	.BOLT .BOULON	2				
12	92903-05100	.WASHER, SPRING .RONDELLE, GROWER	2				
13	95303-05700	.NUT .ECROU	2				

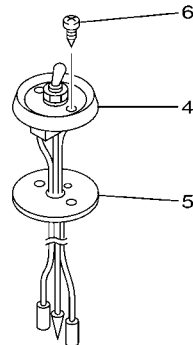
ADAPTER FOR EMERGENCY STOP SWITCH LEAD



ENGINE SHUT-OFF LANYARD (CORD)



PT/T SWITCH PANEL
(FOR PTT MODELS)



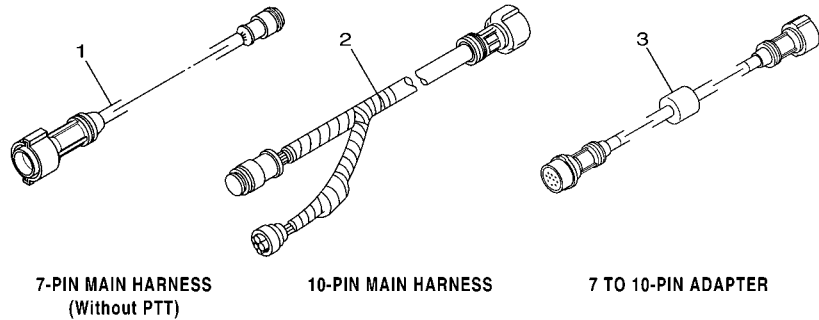
6011100-G330

FIG. 35 SWITCH & PANEL 13

TABLEAU DE CONTACTEUR 13

REF. NO.	PART NO. N° PIECES	DESCRIPTION DESCRIPTION	602R				REMARKS REMARQUES
1	6X3-81971-00	WIRE, LEAD FIL	1				
2	6X3-81971-10	WIRE, LEAD FIL	1				
3	682-82556-00	LANYARD, STOP SWITCH PLAQUETTE	1				
4	688-82563-10	TRIM & TILT SWITCH ASSY INCLINER ET PARER COMMUTATEUR	1				
5	688-82388-00	PLATE PLAQUETTE	1				
6	97780-40116	SCREW, TAPPING VIS, TETE BOMBEE	2				

SWITCH PANEL HARNESS

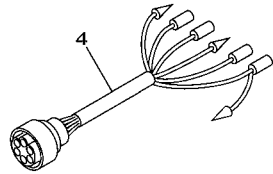


**7-PIN MAIN HARNESS
(Without PTT)**

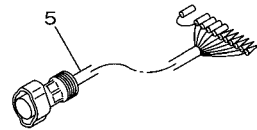
10-PIN MAIN HARNESS

7 TO 10-PIN ADAPTER

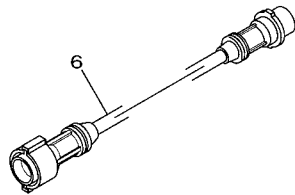
WIRE HARNESS



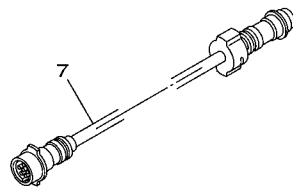
**SUB WIRE LEAD
(For 10-pin remote control
main harness)**



**SUB WIRE LEAD
(For 10-pin main harness of
703 remote control)**



7-PIN EXTENSION HARNESS



10-PIN EXTENSION HARNESS

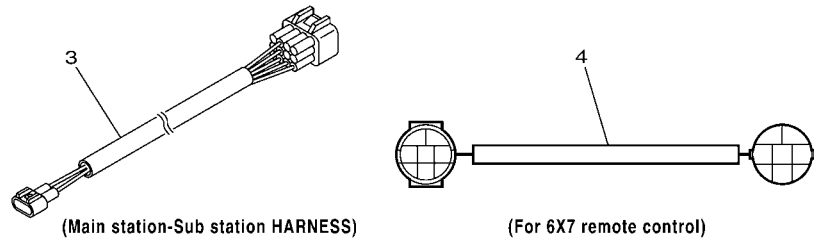
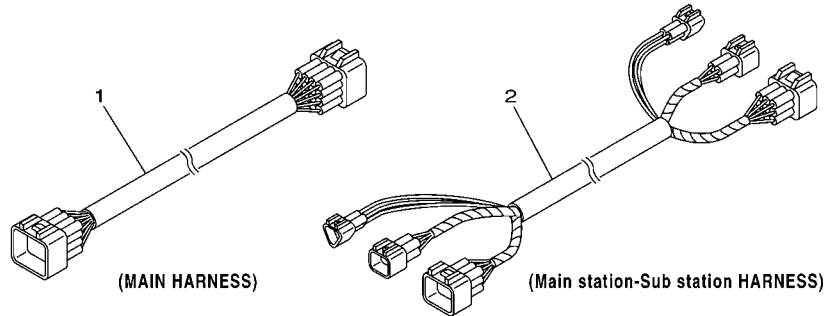
6011100-G340

FIG. 36 WIRE HARNESS 1

FAISCEAU DE FILS 1

REF. NO.	PART NO. N° PIECES	DESCRIPTION DESCRIPTION	602R				REMARKS REMARQUES
1	688-82586-50	EXTENSION, WIRE HARNESS (5M) EXTENSION, FAISCEAU DE FILS (5)	1				(7P) (7P)
2	688-8258A-50	EXTENSION, WIRE HARNESS (5M) EXTENSION, FAISCEAU DE FILS (5)	1				UR (10P) UR (10P)
	688-8258A-60	EXTENSION, WIRE HARNESS (6M) EXTENSION, FAISCEAU DE FILS (6)	1				UR (10P) UR (10P)
	61B-8258A-01	EXTENSION, WIRE HARNESS (9.5M) EXTENSION, FAISCEAU DE FILS(9.	1				UR (10P) UR (10P)
	6K1-8258A-40	EXTENSION, WIRE HARNESS (8M) EXTENSION, FAISCEAU DE FILS(8M	1				UR (10P) UR (10P)
3	703-8258A-00	EXTENSION, WIRE HARNESS (0.5M) EXTENSION, FAISCEAU DE FILS (0	1				7P TO 10P ADAPTER 7P TO 10P ADAPTER
4	704-85721-00	WIRE, LEAD FIL, SECONDAIRE	1				
5	688-8258A-20	EXTENSION, WIRE HARNESS (4.9M) EXTENSION, FAISCEAU DE FILS (4	1				(10P) (10P)
6	688-82586-11	EXTENSION, WIRE HARNESS (2.0M) EXTENSION, FAISCEAU DE FILS (2	1				UR L:2M(7P) UR L:2M(7P)
	688-82586-31	EXTENSION, WIRE HARNESS (3.0M) EXTENSION, FAISCEAU DE FILS (3	1				UR L:3M(7P) UR L:3M(7P)
7	688-8258A-10	EXTENSION, WIRE HARNESS (2M) EXTENSION, FAISCEAU DE FILS (2	1				UR (10P) UR (10P)
	688-8258A-30	EXTENSION, WIRE HARNESS (3M) EXTENSION, FAISCEAU DE FILS (3	1				UR (10P) UR (10P)

**DIGITAL ELECTRONIC
CONTROL WIRE HARNESS**



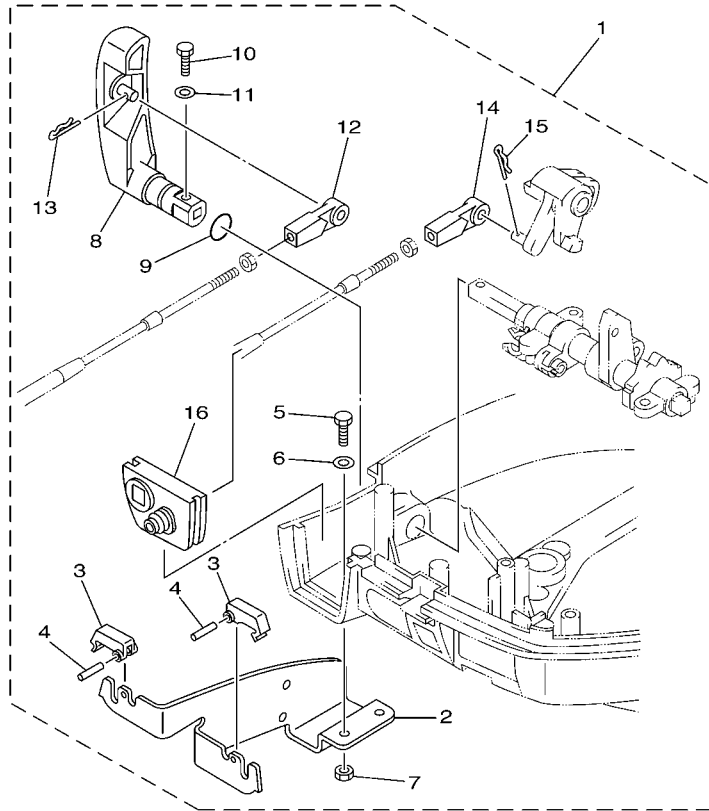
601R10R-H370

FIG. 37 WIRE HARNESS 2

FAISCEAU DE FILS 2

REF. NO.	PART NO. N° PIECES	DESCRIPTION DESCRIPTION	602R				REMARKS REMARQUES
1	6X6-8258A-00	EXTENSION, WIRE HARNESS (6.1M) EXTENSION, FIL FAISCEAU (6.1M)	1				UR UR
	6X6-8258A-10	EXTENSION, WIRE HARNESS (7M) EXTENSION, FIL FAISCEAU (7M)	1				UR UR
	6X6-8258A-20	EXTENSION, WIRE HARNESS (8M) EXTENSION, FIL FAISCEAU (8M)	1				UR UR
	6X6-8258A-30	EXTENSION, WIRE HARNESS (10M) EXTENSION, FIL FAISCEAU (10M)	1				UR UR
	6X6-8258A-40	EXTENSION, WIRE HARNESS (12M) EXTENSION, FIL FAISCEAU (12M)	1				UR UR
2	6X6-8258A-A0	EXTENSION, WIRE HARNESS (5M) EXTENSION, FIL FAISCEAU (5M)	1				UR 2 STATION UR 2 STATION
	6X6-8258A-C0	EXTENSION, WIRE HARNESS (8M) EXTENSION, FIL FAISCEAU (8M)	1				UR 2 STATION UR 2 STATION
	6X6-8258A-E0	EXTENSION, WIRE HARNESS (12.2M) EXTENSION, FIL FAISCEAU (12.2M)	1				UR 2 STATION UR 2 STATION
3	6X6-8258A-B0	EXTENSION, WIRE HARNESS (5M) EXTENSION, FIL FAISCEAU (5M)	1				UR 2 STATION UR 2 STATION
	6X6-8258A-D0	EXTENSION, WIRE HARNESS (8M) EXTENSION, FIL FAISCEAU (8M)	1				UR 2 STATION UR 2 STATION
	6X6-8258A-F0	EXTENSION, WIRE HARNESS (12.2M) EXTENSION, FIL FAISCEAU (12.2M)	1				UR 2 STATION UR 2 STATION
4	6X7-82590-30	WIRE HARNESS ASSY FAISCEAU DE FILS COMPLET	1				FOR 6X7 RC FOR 6X7 RC

Part No.	Applicable model
60R-G8501-00	
6AU-48501-00	

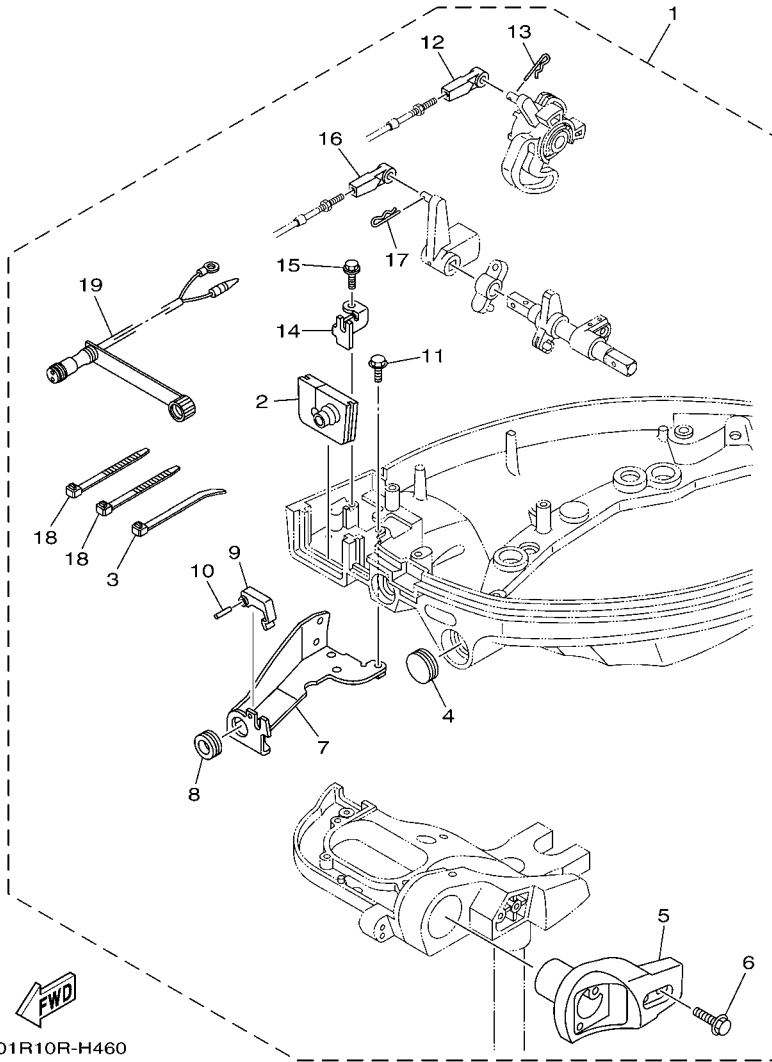


6011100-G430

FIG. 45 REMO CON ATTACHMENT 7 COMMANDE A DISTANCE 7

REF. NO.	PART NO. N° PIECES	DESCRIPTION DESCRIPTION	602R				REMARKS REMARQUES
1	60R-G8501-00	REMOTE CONT. ATTACHMENT ASSY. COMMANDE A DISTANCE (KIT)	1				UR
	6AU-48501-00	REMOTE CONT. ATTACHMENT ASSY. COMMANDE A DISTANCE (KIT)	1				UR
2	68T-48531-00	.BRACKET, REMOTE CONTROL 1 .ETRIER 1, COMMANDE A DISTANCE	1				UR
3	682-48538-50	.CLAMP, CABLE 1 .COLLIER	2				
4	91690-30012	.PIN, SPRING .AGRAFFE	2				
5	97095-06012	.BOLT .BOULON	2				
6	92995-06600	.WASHER .RONDELLE	2				
7	95380-06600	.NUT, HEXAGON .ECROU	2				
8	60R-G4111-10	.HANDLE, GEAR SHIFT .POIGNEE, LEVIER D'EMBAYAGE	1				FOR 60R-G8501-00
	6AU-44111-10	.HANDLE, GEAR SHIFT .POIGNEE, LEVIER D'EMBAYAGE	1				FOR 60R-G8501-00
							FOR 6AU-48501-00
9	93210-12327	.O-RING .JOINT TORIQUE	1				
10	97095-05016	.BOLT .BOULON	1				
11	92995-05600	.WASHER .RONDELLE	1				
12	663-48344-00	.CABLE END, REMOTE CONTROL .CHAPE CABLE	1				
13	90468-18008	.CLIP .JONC	1				
14	663-48344-00	.CABLE END, REMOTE CONTROL .CHAPE CABLE	1				
15	90468-18008	.CLIP .JONC	1				
16	68T-42725-10	.GROMMET .PASSE-FIL	1				

Part No.	Applicable model
6AH-48501-00	



601R10R-H460

FIG. 46 REMO CON ATTACHMENT 8 COMMANDE A DISTANCE 8

REF. NO.	PART NO. N° PIECES	DESCRIPTION DESCRIPTION	602R				REMARKS REMARQUES
1	6AH-48501-00	REMOTE CONT. ATTACHMENT ASSY. COMMANDE A DISTANCE (KIT)	1				
2	6AH-42724-10	.GROMMET .PASSE-FIL	1				
3	90465-11M10	.CLAMP .BRIDE	1				
4	65W-42726-10	.GROMMET .PASSE-FIL	1				
5	6AH-83773-00	.BRACKET, SWITCH .JOINT TORIQUE, COMMUTATEUR	1				
6	97595-06530	.BOLT, WITH WASHER .VIS HEXAGONAL AVC RONDELLE	2				
7	6AH-48532-00	.BRACKET, REMOTE CONTROL 2 .ETRIER 2, COMMANDE A DISTANCE	1				
8	90480-19031	.GROMMET .PASSE-FIL	1				
9	682-48538-50	.CLAMP, CABLE 1 .COLLIER	1				
10	91690-30012	.PIN, SPRING .AGRAFFE	1				
11	97595-06514	.BOLT, WITH WASHER .VIS HEXAGONAL AVC RONDELLE	2				
12	663-48344-00	.CABLE END, REMOTE CONTROL .CHAPE CABLE	1				
13	90468-18008	.CLIP .JONC	1				
14	6AH-48531-00	.BRACKET, REMOTE CONTROL 1 .ETRIER 1, COMMANDE A DISTANCE	1				
15	90109-06M86	.BOLT .BOULON	1				
16	663-48344-00	.CABLE END, REMOTE CONTROL .CHAPE CABLE	1				
17	90468-18008	.CLIP .JONC	1				
18	90465-13M18	.CLAMP .BRIDE	2				
19	6D5-84340-00	.SOCKET CORD ASSY 1 .DOUILLE	1				

Part No.	Applicable model
65W-48501-00	

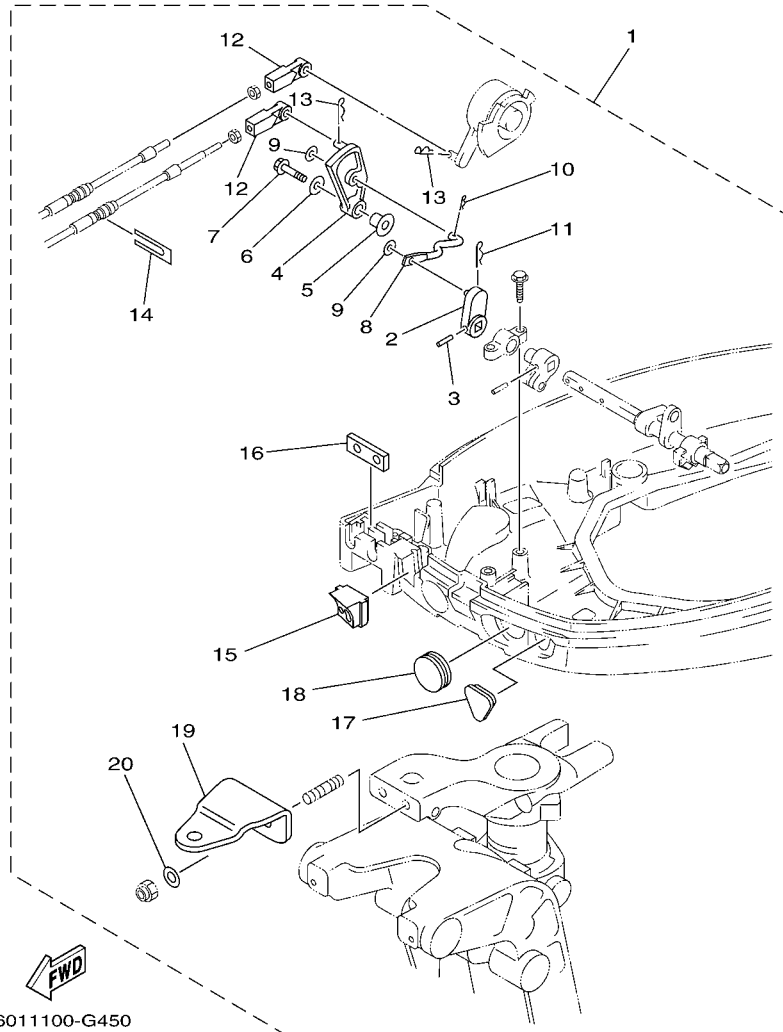
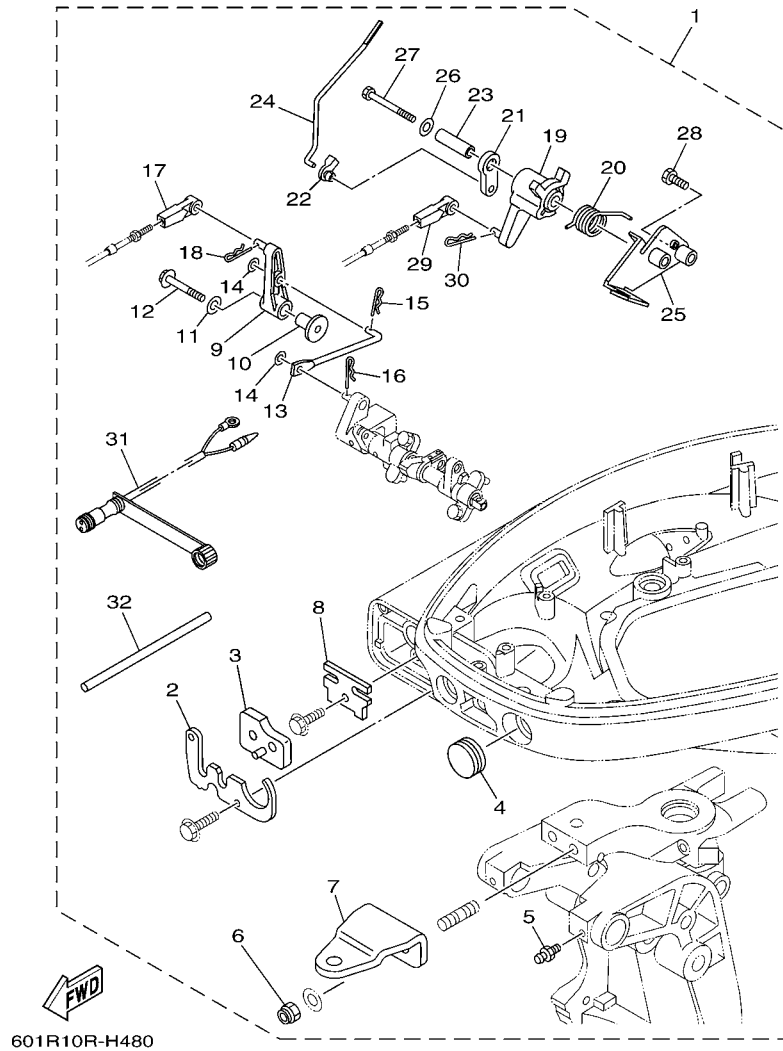


FIG. 47 REMO CON ATTACHMENT 9 COMMANDE A DISTANCE 9

REF. NO.	PART NO. N° PIECES	DESCRIPTION DESCRIPTION	602R				REMARKS REMARQUES
1	65W-48501-00	REMOTE CONT. ATTACHMENT ASSY. COMMANDE A DISTANCE (KIT)	1				
2	65W-44142-00	.JOINT .AXE	1				
3	90254-03M05	.PIN, SPRING .RIVET, TETE TRONCONIQUE	1				
4	65W-44125-00	.LEVER, SHIFT ROD .LEVIER, TIGE D'INVERSION	1				
5	90387-06M29	.COLLAR .COLLERETTE	1				
6	90201-06M31	.WASHER, PLATE .RONDELLE, PLATE	1				
7	97595-06525	.BOLT, WITH WASHER .VIS HEXAGONAL AVC RONDELLE	1				
8	65W-44192-00	.JOINT, ROD 1 .RACCORD 1, BIELLETTE	1				
9	90201-05M06	.WASHER, PLATE .RONDELLE, PLATE	2				
10	90468-10005	.CLIP .JONC	1				
11	90468-18008	.CLIP .JONC	1				
12	663-48344-00	.CABLE END, REMOTE CONTROL .CHAPE CABLE	2				
13	90468-18008	.CLIP .JONC	2				
14	6H3-48538-00	.CLAMP, CABLE 1 .COLLIER	1				
15	65W-42725-21	.GROMMET .PASSE-FIL	1				
16	62Y-42727-00	.GROMMET .PASSE-FIL	1				
17	65W-26326-10	.GROMMET .RONDELLE CAOUTCHOUC	1				
18	65W-42726-10	.GROMMET .PASSE-FIL	1				
19	65W-48511-00	.HOOK, STEERING .ATTACHE, DIRECTION	1				
20	90201-10120	.WASHER, PLATE .RONDELLE, PLATE	2				

Part No.	Applicable model
6BL-48501-00	

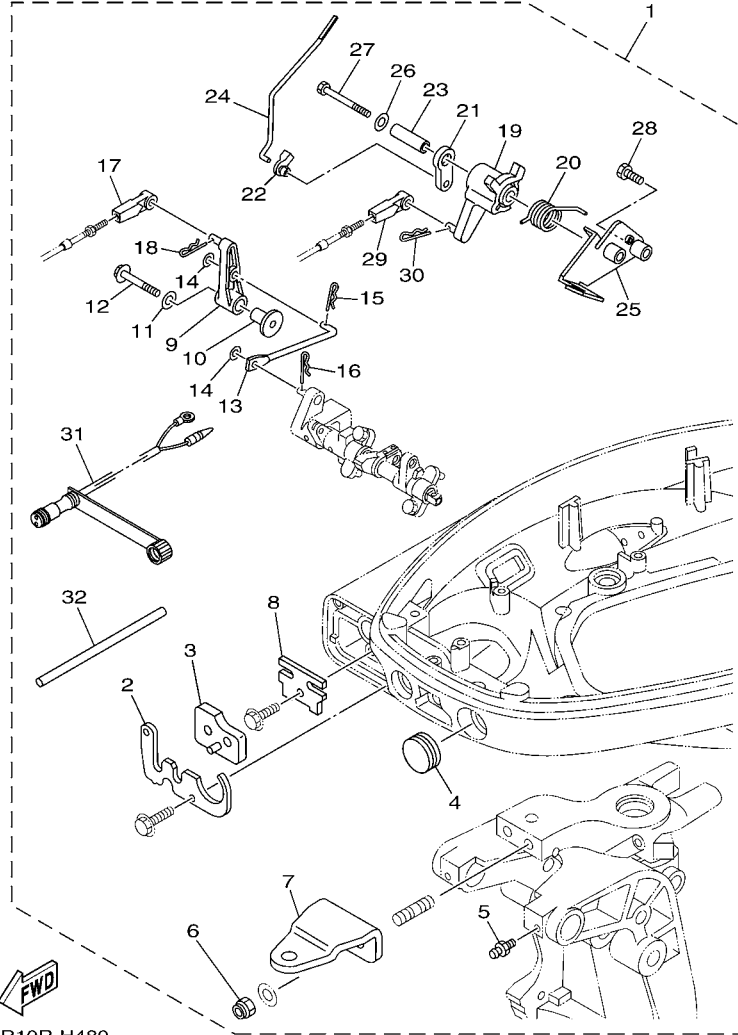


601R10R-H480

FIG. 48 REMO CON ATTACHMENT 10 COMMANDE A DISTANCE 10

REF. NO.	PART NO. N° PIECES	DESCRIPTION DESCRIPTION	602R				REMARKS REMARQUES
1	6BL-48501-00	REMOTE CONT. ATTACHMENT ASSY. COMMANDE A DISTANCE (KIT)	1				
2	6BL-42761-00	.STOPPER .PLAQUETTE	1				
3	6BL-42727-00	.GROMMET .PASSE-FIL	1				
4	65W-42726-10	.GROMMET .PASSE-FIL	1				
5	93700-06M03	.NIPPLE, GREASE .PION	2				
6	90185-10051	.NUT, SELF-LOCKING .ECROU,AUTO-BLOQUANT	2				
7	65W-48511-00	.HOOK, STEERING .ATTACHE, DIRECTION	1				
8	6BL-48538-00	.CLAMP, CABLE 1 .COLLIER	1				
9	6BL-44125-00	.LEVER, SHIFT ROD .LEVIER, TIGE D'INVERSION	1				
10	90387-06M86	.COLLAR .COLLERETTE	1				
11	90201-06M31	.WASHER, PLATE .RONDELLE, PLATE	1				
12	97595-06535	.BOLT, WITH WASHER .VIS HEXAGONAL AVC RONDELLE	1				
13	6BL-44192-00	.LINK, SHIFT ROD .BIELLETTTE	1				
14	90201-05M06	.WASHER, PLATE .RONDELLE, PLATE	2				
15	90468-10005	.CLIP .JONC	1				
16	90468-18001	.CLIP .JONC	1				
17	663-48344-00	.CABLE END, REMOTE CONTROL .CHAPE CABLE	1				
18	90468-18008	.CLIP .JONC	1				
19	6BL-41638-00	.PULLEY .POULIE	1				
20	90508-20040	.SPRING, TORSION .RESSORT, TORSION	1				
21	65W-41283-00	.LEVER, FREE ACCEL. .LEVIER	1				
22	6J8-41262-00	.JOINT, CHOKE LEVER .RACCORD, LEVIER DE STARTER	1				
23	90387-06139	.COLLAR .COLLERETTE	1				
24	6BL-41211-00	.LINK, ACCEL. .BIELLETTTE, ACCELERATION	1				
25	6BL-14571-10	.BRACKET, THROTTLE .SUPPORT, ACCELERATEUR	1				
26	90201-06M31	.WASHER, PLATE .RONDELLE, PLATE	1				
27	97095-06065	.BOLT .BOULON	1				

Part No.	Applicable model
6BL-48501-00	



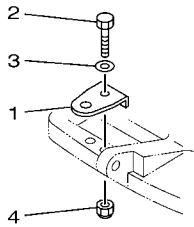
601R10R-H480

FIG. 48 REMO CON ATTACHMENT 10 COMMANDE A DISTANCE 10

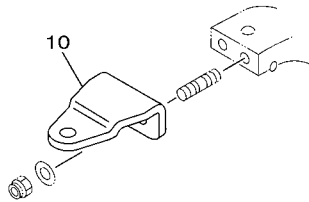
REF. NO.	PART NO. N° PIECES	DESCRIPTION DESCRIPTION	602F			REMARKS REMARQUES
28	97095-06025	.BOLT .BOULON	1			
29	663-48344-00	.CABLE END, REMOTE CONTROL .CHAPE CABLE	1			
30	90468-18008	.CLIP .JONC	1			
31	6D5-84340-00	.SOCKET CORD ASSY 1 .DOUILLE	1			
32	90446-09M42	.HOSE (L160) .DURITE (L160)	2			
<hr/>						
<hr/>						
<hr/>						
<hr/>						
<hr/>						
<hr/>						
<hr/>						
<hr/>						
<hr/>						
<hr/>						

STEERING HOOK

Part No.	Applicable model	Remarks
63V-48511-01		Steering guide type

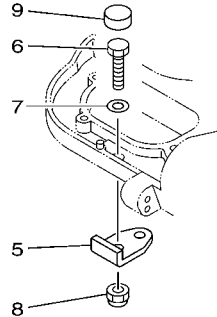


Part No.	Applicable model	Remarks
65W-48511-10		Steering guide type

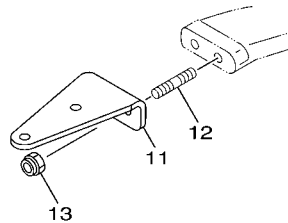


 601R10R-H500

Part No.	Applicable model	Remarks
6AH-48511-00		Steering guide type



Part No.	Applicable model	Remarks
67F-48511-00		Steering guide type



Part No.	Applicable model	Remarks
68V-48511-00		Steering guide type

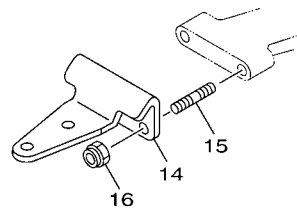
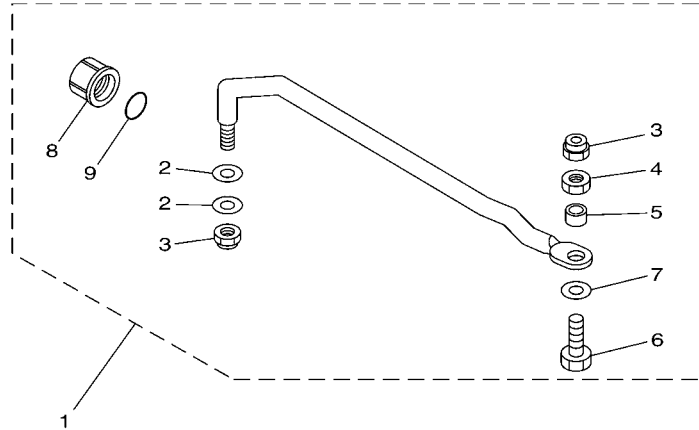


FIG. 50 STEERING HOOK 2

ATTACHE DIRECTION 2

REF. NO.	PART NO. N° PIECES	DESCRIPTION DESCRIPTION	602R				REMARKS REMARQUES
1	63V-48511-01	HOOK, STEERING ATTACHE, DIRECTION	1				STEERING GUIDE STEERING GUIDE
2	97075-08035	BOLT BOULON	1				
3	92995-08600	WASHER RONDELLE	1				
4	90185-08057	NUT, SELF-LOCKING ECROU,AUTO-BLOQUANT	1				
5	6AH-48511-00	HOOK, STEERING ATTACHE, DIRECTION	1				STEERING GUIDE STEERING GUIDE
6	97095-08025	BOLT BOULON	1				
7	92995-08600	WASHER RONDELLE	1				
8	90185-08057	NUT, SELF-LOCKING ECROU,AUTO-BLOQUANT	1				
9	6AH-44194-00	CAP CAPUCHON	1				
10	65W-48511-10	HOOK, STEERING ATTACHE, DIRECTION	1				STEERING GUIDE STEERING GUIDE
11	67F-48511-00	HOOK, STEERING ATTACHE, DIRECTION	1				STEERING GUIDE STEERING GUIDE
12	90116-10175	BOLT, STUD GOUJON	2				
13	90185-10051	NUT, SELF-LOCKING ECROU,AUTO-BLOQUANT	2				
14	68V-48511-00	HOOK, STEERING ATTACHE, DIRECTION	1				STEERING GUIDE STEERING GUIDE
15	90116-10175	BOLT, STUD GOUJON	2				
16	90185-10051	NUT, SELF-LOCKING ECROU,AUTO-BLOQUANT	2				

Part No.	Applicable model
68T-61350-10	



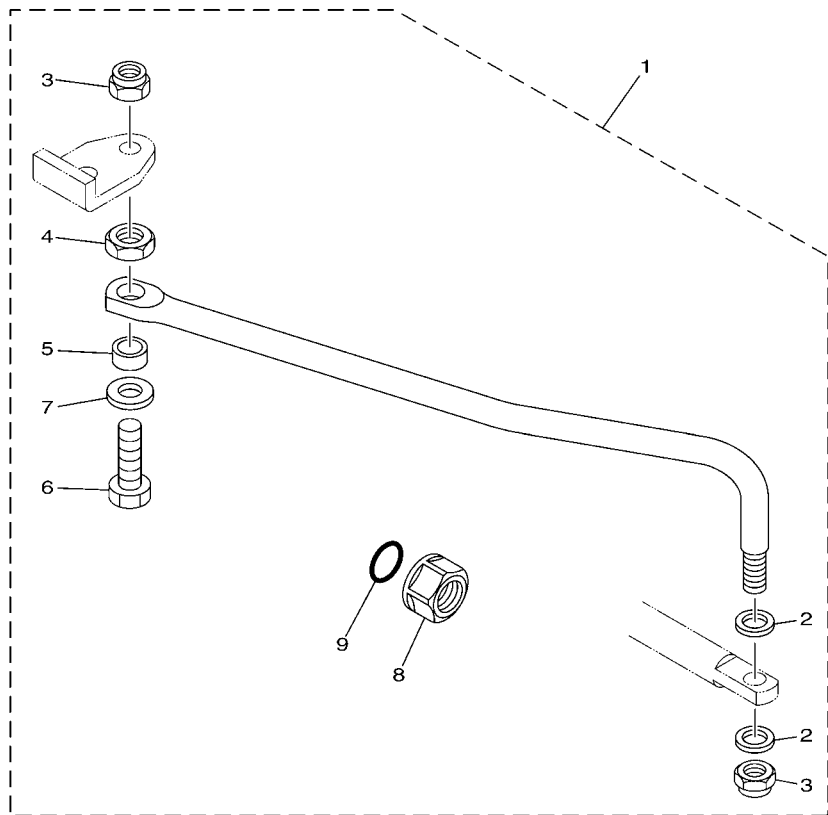
6011100-G500

FIG. 53 STEERING GUIDE 2

FIXATION DE DIRECTION 2

REF. NO.	PART NO. N° PIECES	DESCRIPTION DESCRIPTION	602R				REMARKS REMARQUES
1	68T-61350-10	STEERING GUIDE ATTACHMENT KIT FIXATIONS DE DIRECTION	1				
2	90201-10M20	.WASHER, PLATE .RONDELLE, PLATE	2				
3	90185-09M01	.NUT, SELF-LOCKING .ECROU, AUTO-BLOQUANT	2				
4	90170-09M03	.NUT .ECROU	1				
5	90387-10M42	.COLLAR .COLLERETTE	1				
6	6E5-61355-00	.BOLT .BOULON	1				
7	90201-10M63	.WASHER, PLATE .RONDELLE, PLATE	1				
8	6E5-43145-01	.CAP. CLAMP BRACKET .CAPUCHON, PRESSE	1				
9	93210-16275	.O-RING .JOINT TORIQUE	1				

Part No.	Applicable model
6AH-61350-00	



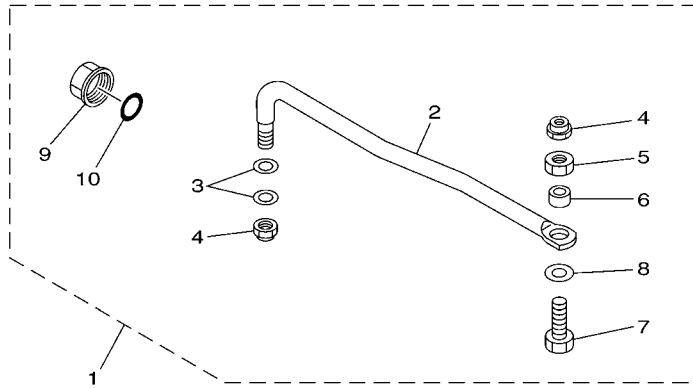
6011100-G510

FIG. 54 STEERING GUIDE 3

FIXATION DE DIRECTION 3

REF. NO.	PART NO. N° PIECES	DESCRIPTION DESCRIPTION	602R				REMARKS REMARQUES
1	6AH-61350-00	STEERING GUIDE ATTACHMENT KIT FIXATIONS DE DIRECTION	1				
2	90201-10M20	.WASHER, PLATE .RONDELLE, PLATE	2				
3	90185-09M01	.NUT, SELF-LOCKING .ECROU, AUTO-BLOQUANT	2				
4	90170-09M03	.NUT .ECROU	1				
5	90387-10M42	.COLLAR .COLLERETTE	1				
6	6E5-61355-00	.BOLT .BOULON	1				
7	90201-10M63	.WASHER, PLATE .RONDELLE, PLATE	1				
8	6E5-43145-01	.CAP CLAMP BRACKET .CAPUCHON, PRESSE	1				
9	93210-16275	.O-RING .JOINT TORIQUE	1				

Part No.	Applicable model
65W-61350-00	



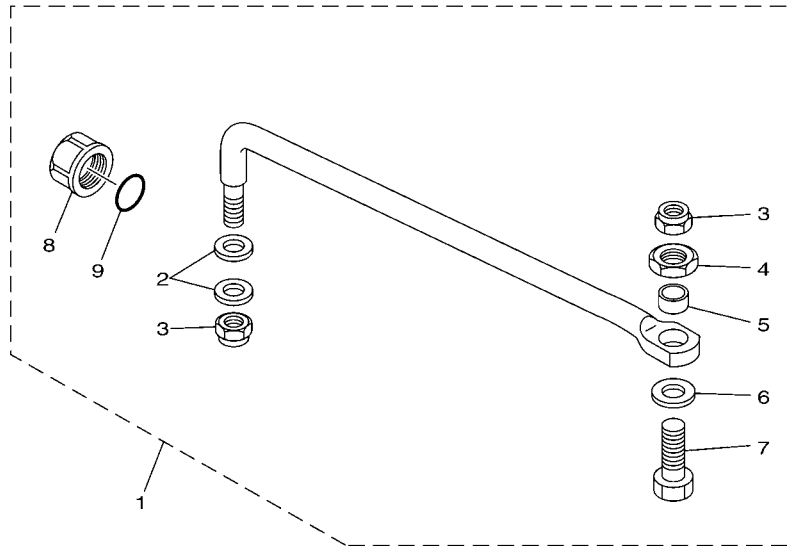
6011100-G540

FIG. 57 STEERING GUIDE 6

FIXATION DE DIRECTION 6

REF. NO.	PART NO. N° PIECES	DESCRIPTION DESCRIPTION	602R				REMARKS REMARQUES
1	65W-61350-00	STEERING GUIDE ATTACHMENT KIT FIXATIONS DE DIRECTION	1				
2	65W-61351-00	.ROD, STEERING LINK .RENOI DE DIRECTION	1				
3	90201-10M20	.WASHER, PLATE .RONDELLE, PLATE	2				
4	90185-09M01	.NUT, SELF-LOCKING .ECROU,AUTO-BLOQUANT	2				
5	90170-09M03	.NUT .ECROU	1				
6	90387-10M42	.COLLAR .COLLERETTE	1				
7	90101-09M01	.BOLT .BOULON	1				
8	90201-10M63	.WASHER, PLATE .RONDELLE, PLATE	1				
9	6E5-43145-01	.CAP CLAMP BRACKET .CAPUCHON, PRESSE	1				
10	93210-16275	.O-RING .JOINT TORIQUE	1				

Part No.	Applicable model
67F-61350-00	



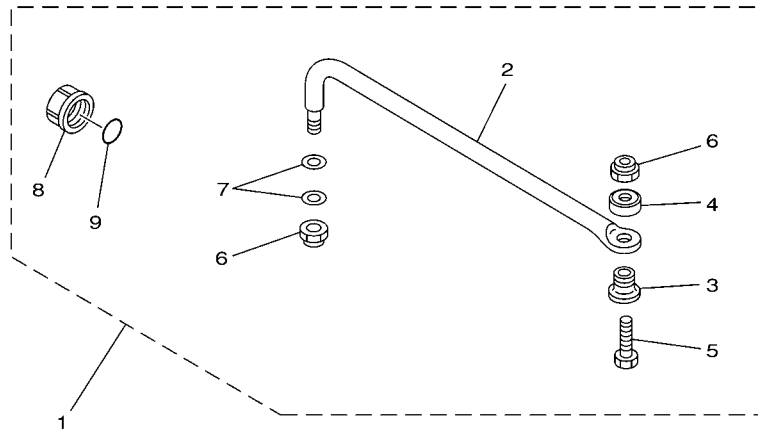
6011100-G560

FIG. 59 STEERING GUIDE 8

FIXATION DE DIRECTION 8

REF. NO.	PART NO. N° PIECES	DESCRIPTION DESCRIPTION	602F			REMARKS REMARQUES
1	67F-61350-00	STEERING GUIDE ATTACHMENT KIT FIXATIONS DE DIRECTION	1			
2	90201-10M20	.WASHER, PLATE .RONDELLE, PLATE	2			
3	90185-09M01	.NUT, SELF-LOCKING .ECROU,AUTO-BLOQUANT	2			
4	90170-09M03	.NUT .ECROU	1			
5	90387-10M42	.COLLAR .COLLERETTE	1			
6	90201-10M63	.WASHER, PLATE .RONDELLE, PLATE	1			
7	90101-09M01	.BOLT .BOULON	1			
8	6E5-43145-01	.CAP. CLAMP BRACKET .CAPUCHON, PRESSE	1			
9	93210-16275	.O-RING .JOINT TORIQUE	1			

Part No.	Applicable model
6E5-61350-02	



6011100-G570

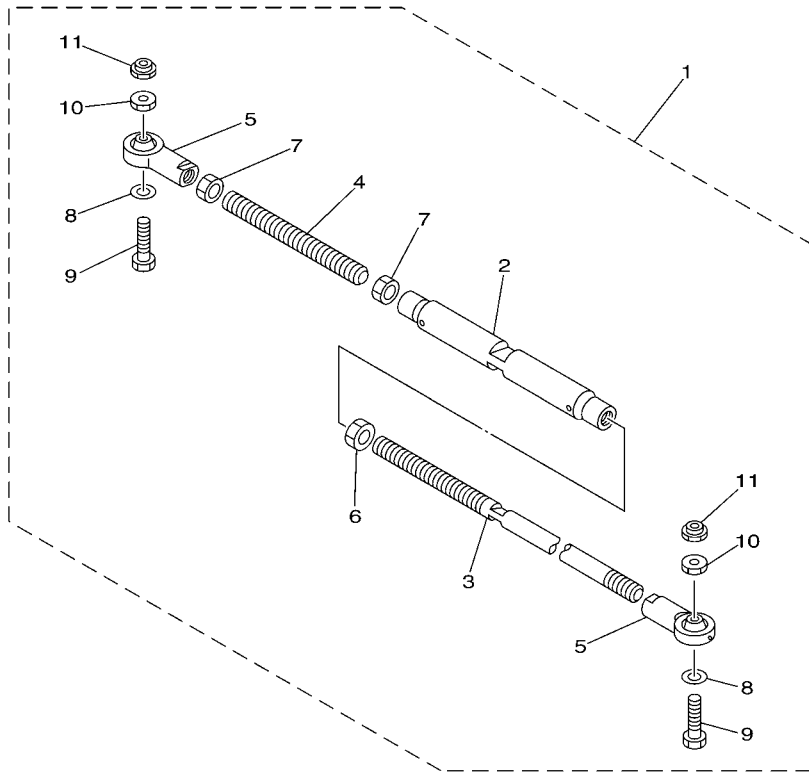
FIG. 60 STEERING GUIDE 9

FIXATION DE DIRECTION 9

REF. NO.	PART NO. N° PIECES	DESCRIPTION DESCRIPTION	602R				REMARKS REMARQUES
1	6E5-61350-02	STEERING GUIDE ATTACHMENT KIT FIXATIONS DE DIRECTION	1				
2	6E5-61351-01	.ROD, STEERING LINK .RENOI DE DIRECTION	1				
3	90387-10M61	.COLLAR .COLLERETTE	1				
4	90560-12M01	.SPACER .ENTRETOISE	1				
5	6E5-61355-00	.BOLT .BOULON	1				
6	90185-09M01	.NUT, SELF-LOCKING .ECROU, AUTO-BLOQUANT	2				
7	90201-10M20	.WASHER, PLATE .RONDELLE, PLATE	2				
8	6E5-43145-01	.CAP CLAMP BRACKET .CAPUCHON, PRESSE	1				
9	93210-16275	.O-RING .JOINT TORIQUE	1				

Part No.	Applicable model
6E5-61301-01	

Twin engine tie-bar kit
Adjustable distance : 600 mm (23.6 in.) – 800 mm (31.5 in.)



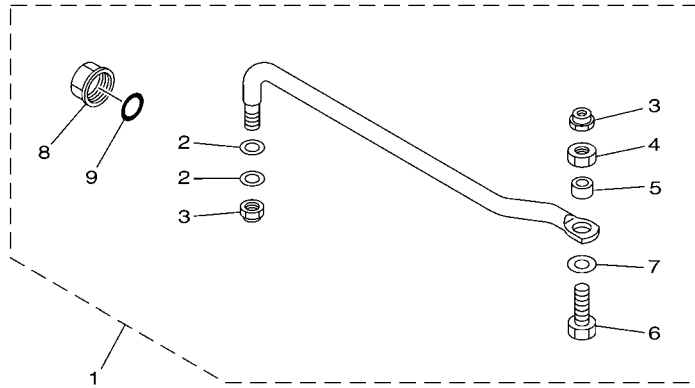
6011100-G580

FIG. 61 STEERING GUIDE 10

FIXATION DE DIRECTION 10

REF. NO.	PART NO. N° PIECES	DESCRIPTION DESCRIPTION	602R				REMARKS REMARQUES
1	6E5-61301-01	TWIN KIT (L:600-800MM) JUMELE KIT (L:600-800MM)	1				
2	6E5-61313-00	.ADJUSTER .TENDEUR	1				
3	6E5-61311-11	.TIE BAR .BARRE D'ACCOUPLMENT	1				
4	6E5-61315-00	.TIE BAR .BARRE D'ACCOUPLMENT	1				
5	6E5-61303-00	.STEERING AXLE COMP. .AXLE COMP.	2				
6	90170-14M06	.NUT .ECROU	1				
7	95380-14700	.NUT .ECROU	2				
8	90201-10M76	.WASHER, PLATE .RONDELLE, PLATE	2				
9	90101-09M70	.BOLT .BOULON	2				
10	90170-09M05	.NUT .ECROU	2				
11	90185-09M01	.NUT, SELF-LOCKING .ECROU,AUTO-BLOQUANT	2				

Part No.	Applicable model
6BG-61350-00	



601R10R-H620

FIG. 62 STEERING GUIDE 11

FIXATION DE DIRECTION 11

REF. NO.	PART NO. N° PIECES	DESCRIPTION DESCRIPTION	602R				REMARKS REMARQUES
1	6BG-61350-00	STEERING GUIDE ATTACHMENT KIT FIXATIONS DE DIRECTION	1				
2	90201-10M20	.WASHER, PLATE .RONDELLE, PLATE	2				
3	90185-09M01	.NUT, SELF-LOCKING .ECROU, AUTO-BLOQUANT	2				
4	90170-09M03	.NUT .ECROU	1				
5	90387-10M42	.COLLAR .COLLERETTE	1				
6	90101-09M01	.BOLT .BOULON	1				
7	90201-10M63	.WASHER, PLATE .RONDELLE, PLATE	1				
8	6E5-43145-01	.CAP, CLAMP BRACKET .CAPUCHON, PRESSE	1				
9	93210-16275	.O-RING .JOINT TORIQUE	1				