

Job Name:	
System Reference:	Date:



Indoor Unit: PCA-A36KA6



Outdoor Unit: PUZ-HA36NHA5

### ACCESSORIES:

#### Indoor Unit

- Condensate Pump (BlueDiamond X87-711/721; 115/230V)
- Condensate Pump (Sauermann SI30-115/230; 115/230V)
- High-Efficiency Filter (PAC-SH90KF-E)
- iSee Sensor (PAC-SH91MK-E)
- Disconnect Switch (TAZ-MS303)

#### Outdoor Unit

- Air Outlet Guide (PAC-SG59SG-E [x2])
- Wind Baffle (WB-PA2 [x2])\*  
\*Allows operation to 0° F (-18° C).
- Mounting Base (QSMS1202)
- Wall Bracket (QSWB2000M-1)

#### Controls

- Wireless Controller (MHK1)
- Advanced Wired Controller (PAR-31MAA)
- Simple Wired Controller (PAC-YT53CRAU)
- M-NET Adapter (PAC-SF83MA-E)
- Temperature Sensor (PAC-SE41TS)

### SPECIFICATIONS:

Rated Conditions (Capacity / Input)*		
Cooling	Btu/h / W	34,000 / 2,810
Heating at 47° F	Btu/h / W	38,000 / 3,270
Heating at 17° F	Btu/h / W	27,000 / 3,490

\* Rating Conditions per AHRI Standard:  
 Cooling | Indoor: 80° F (27° C)DB / 67° F (19° C)WB; Outdoor: 95° F (35° C)DB / 75° F (24° C)WB  
 Heating at 47° F | Indoor: 70° F (21° C)DB / 60° F (16° C)WB; Outdoor: 47° F (8° C)DB / 43° F (6° C)WB  
 Heating at 17° F | Indoor: 70° F (21° C)DB / 60° F (16° C)WB; Outdoor: 17° F (-8° C)DB / 15° F (-9° C)WB

Capacity Range		
Cooling	Btu/h	18,000 - 36,000
Heating at 47° F	Btu/h	18,000 - 40,000

Operating Range	
Cooling	0° F** to 115° F (-18° C to 46° C) DB
Heating	-13° F to 70° F (-25° C to 21° C) DB

\*\* The minimum temperature will be 23° F (-5° C) DB if optional wind baffle accessory is not installed.

AHRI Efficiency Ratings	
EER	12.1
SEER	16.6
HSPF	10.3
COP at 47° F	3.41
COP at 17° F	1.95

Electrical Power Requirements	208 / 230V, 1-Phase, 60 Hz
-------------------------------	----------------------------

Minimum Circuit Ampacity (MCA)		
Indoor / Outdoor	A	2 / 28

Indoor Unit		
Blower Motor (ECM)	F.L.A.	0.97
Blower Motor Output	W	160
SHF / Moisture Removal		0.73 / 8.2 pt./h

Outdoor Unit		
Compressor		INVERTER
Fan Motor (ECM)	F.L.A.	0.4 + 0.4
MOCP	A	40

Airflow Rate (Low-M1-M2-Hi)			
Indoor (Cooling)	DRY	CFM	775-850-920-990
	WET		705-775-850-920
Outdoor	DRY		3,530

Sound Pressure Level			
Indoor (Low-M1-M2-Hi)		dB(A)	37-39-41-43
	Cooling		52
Outdoor	Heating		53

External Dimensions		
Indoor (H x W x D)	In.(mm)	9-1/16 x 63 x 26-3/4 (230 x 1,600 x 680)
Outdoor (H x W x D)		53-1/8 x 37-3/8 x 13 + 1-3/16 (1,350 x 950 x 330 + 30)

Net Weight		
Indoor	Lbs.(kg)	79 (36)
Outdoor		265 (120)

External Finish	
Indoor	White Munsell 6.4Y 8.9/0.4
Outdoor	Ivory Munsell 3Y 7.8/1.1

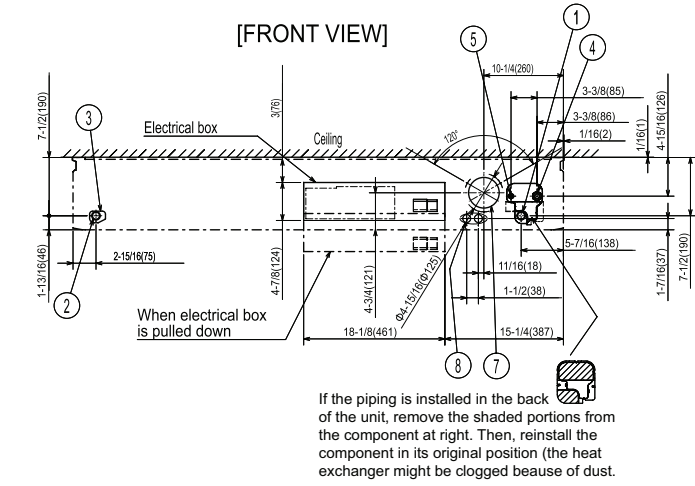
Refrigerant	R410A; 12 lbs.
-------------	----------------

Refrigerant Piping (Flared)		
Liquid (High Pressure)	In.(mm)	5/8 (15.88)
Gas (Low Pressure)		3/8 (9.52)
Maximum Total Refrigerant Pipe Length	Ft. (m)	245 (75)
Maximum Vertical Separation	Ft. (m)	100 (30)

# DIMENSIONS: PCA-A36KA6 & PUZ-HA36NHA5

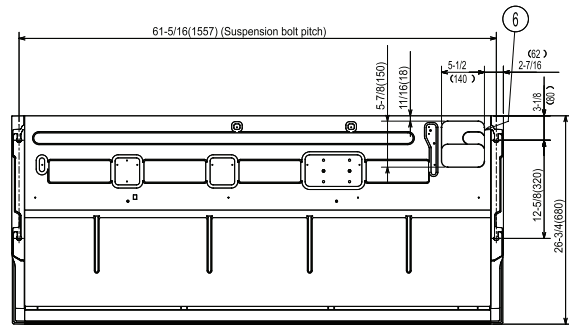
## PCA-A36KA6

Unit: inch (mm)

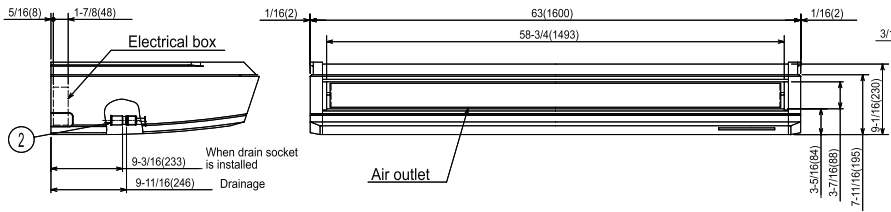


**NOTES.**

1. Use M10 or W3/8 screw for anchor bolt.
2. Please be sure when installing the drain lift up mechanism (option parts), refrigerant pipe will be only upward.

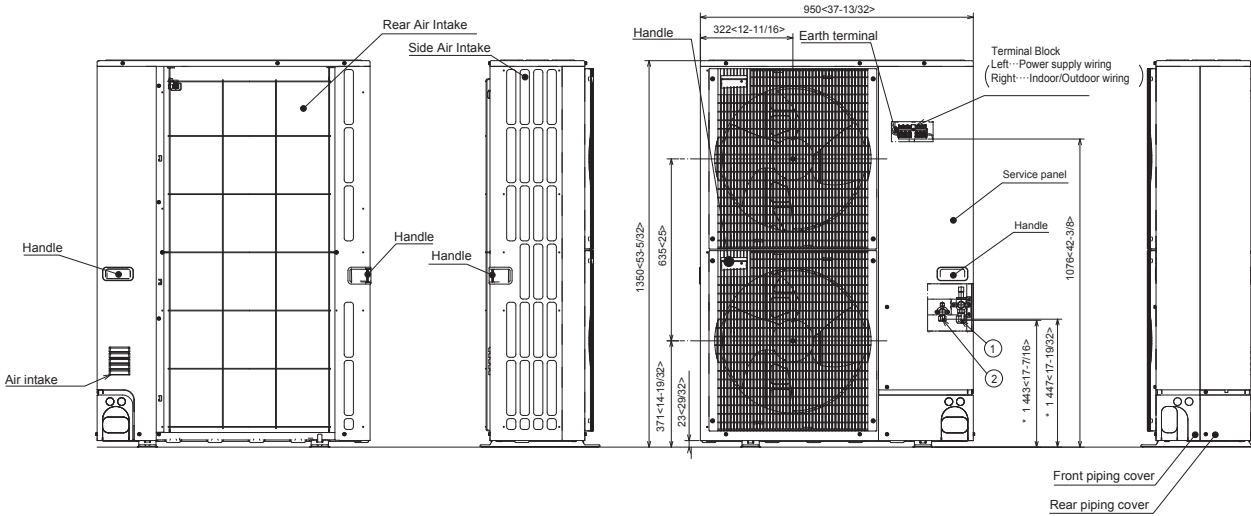


- ① Drainage pipe connection(1/26mm) D.
  - ② Drainage pipe connection(for the left arrangement)
  - ③ Knockout hole for left drain-piping arrangement
  - ④ Refrigerant-pipe connection (gas pipe side/flared connection)
  - ⑤ Refrigerant-pipe connection (liquid pipe side/flared connection)
  - ⑥ Knockout hole for upper drain pipe arrangement
  - ⑦ Knockout hole for ventilation air intake Φ3-15/16(Φ100)
  - ⑧ Knockout hole for wiring arrangement Φ7/8(Φ22)
- Accessory...Drain socket (1/26mm) D.



## PUZ-HA36NHA5

Unit: mm (inch)



COOLING & HEATING

1340 Satellite Boulevard, Suwanee, GA 30024  
Toll Free: 800-433-4822 www.mehvac.com

