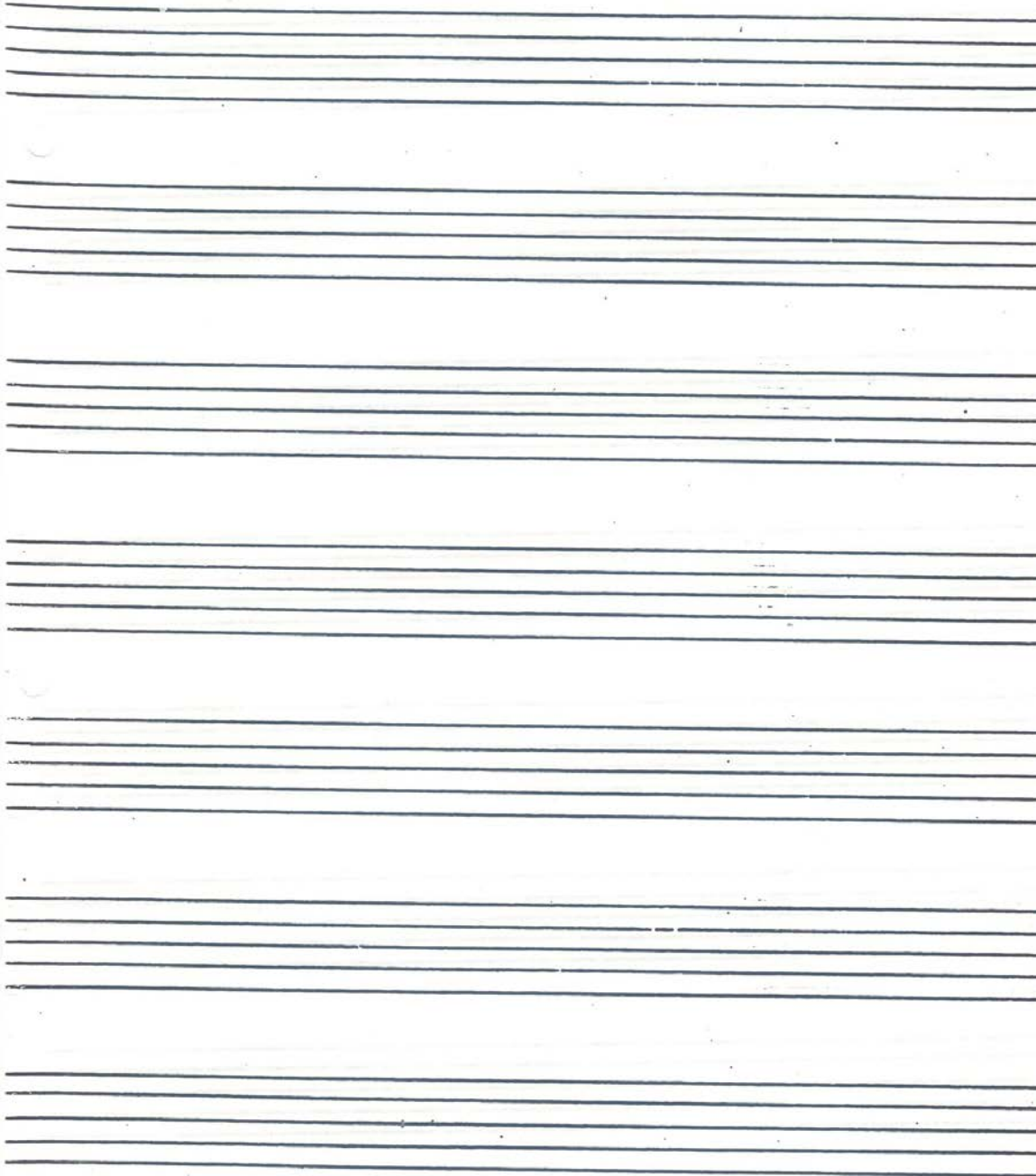
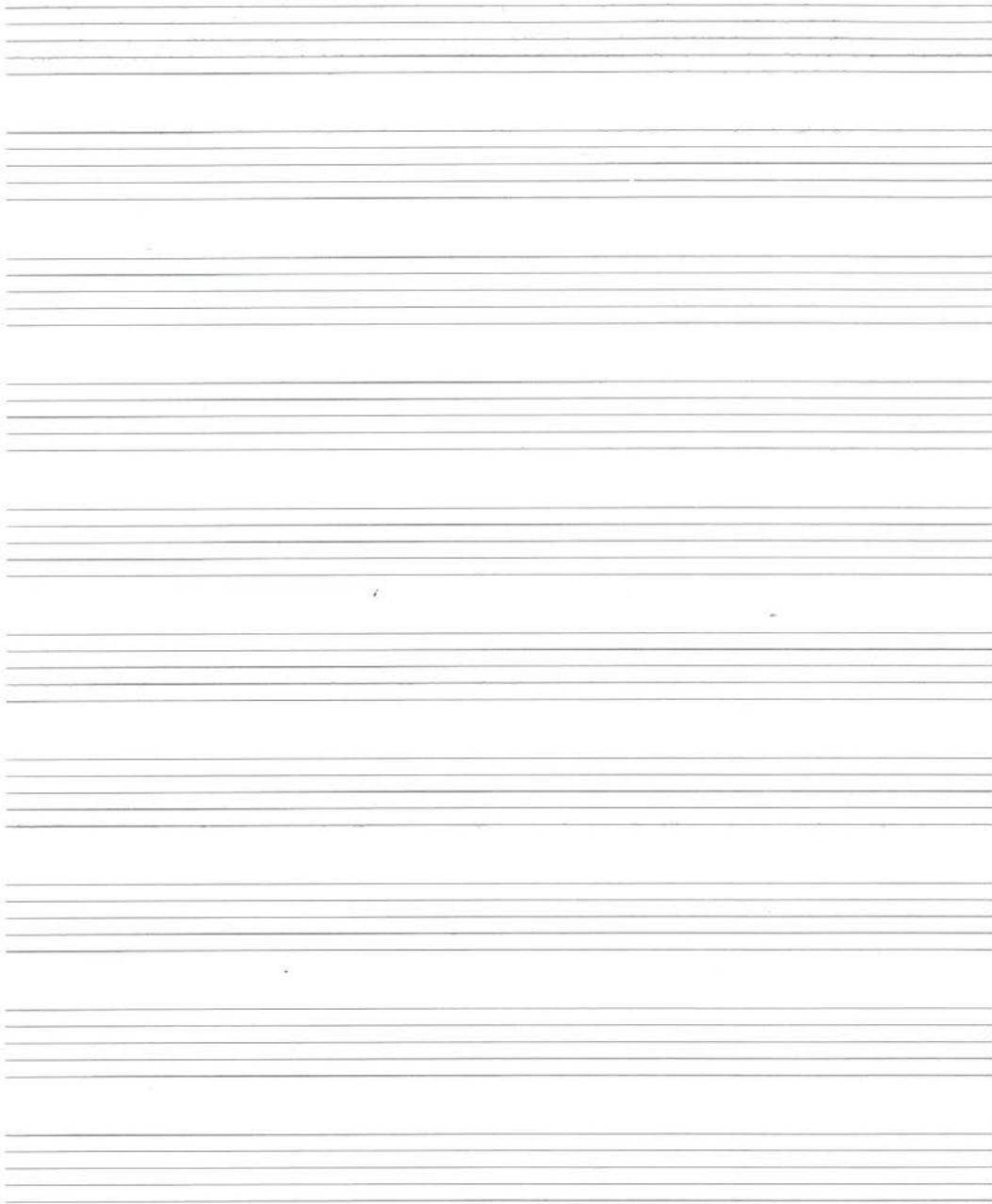


A
VARIETY
OF
STAFF
PAPER
SIZES







Name _____ Title _____ Date _____

The page contains ten sets of blank musical staves, each consisting of five horizontal lines. These staves are arranged vertically down the page, providing space for students to write musical notation.

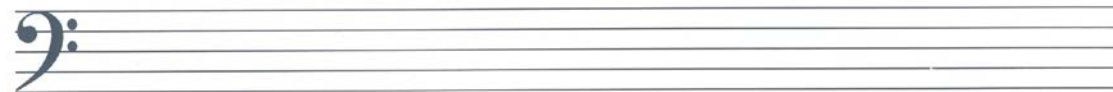
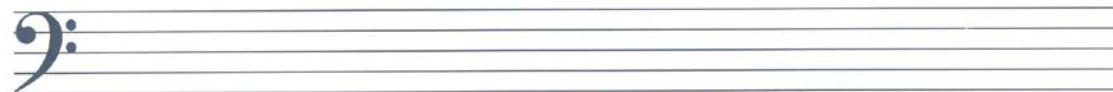
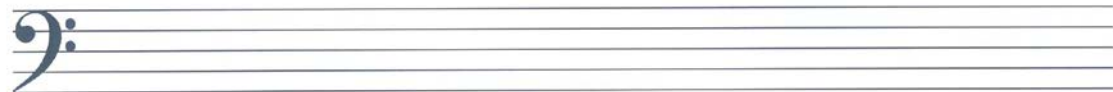
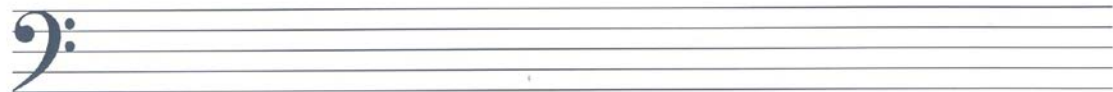
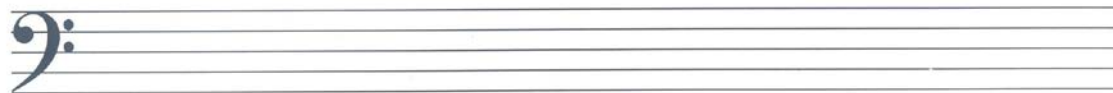
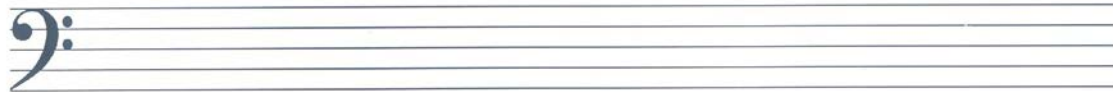
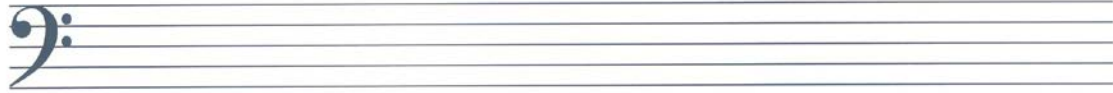
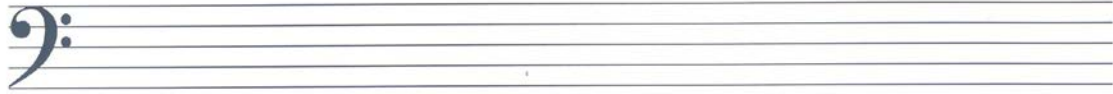
NAME _____

DATE _____

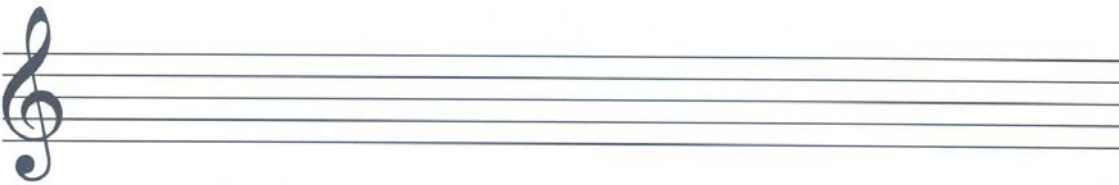
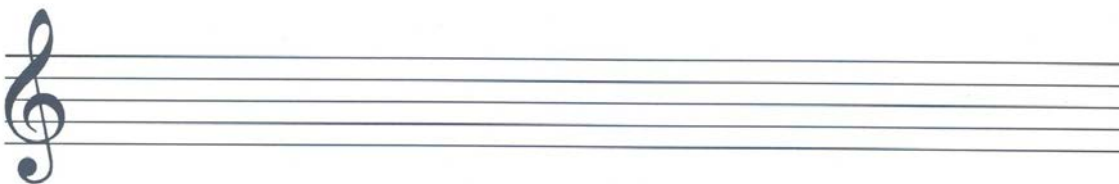
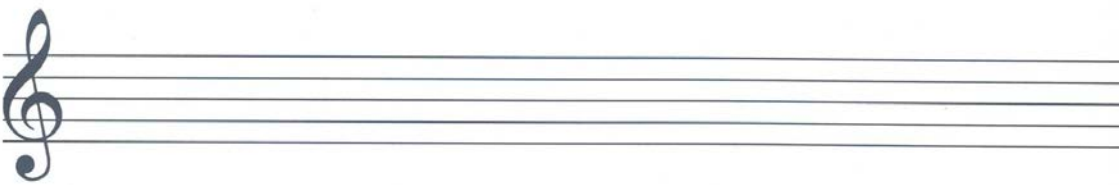
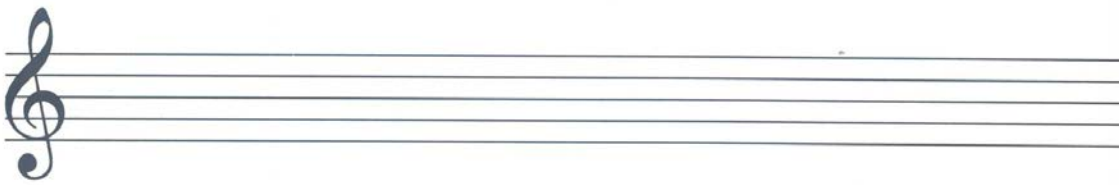
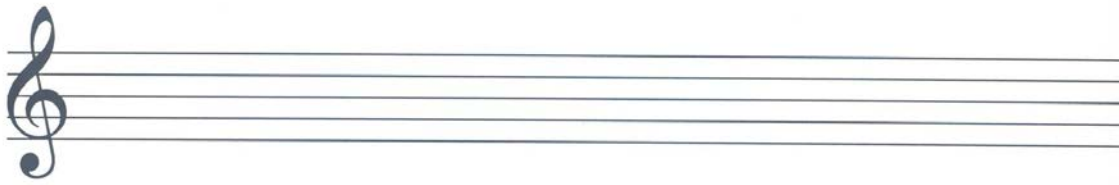
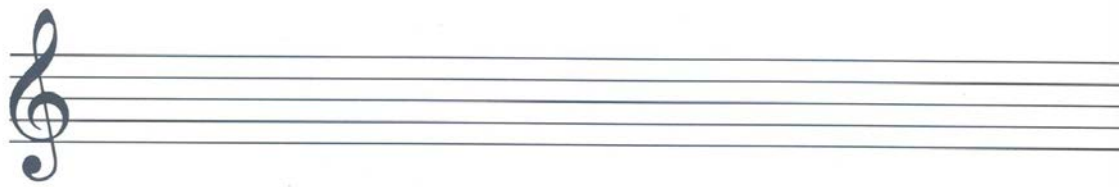
TITLE _____

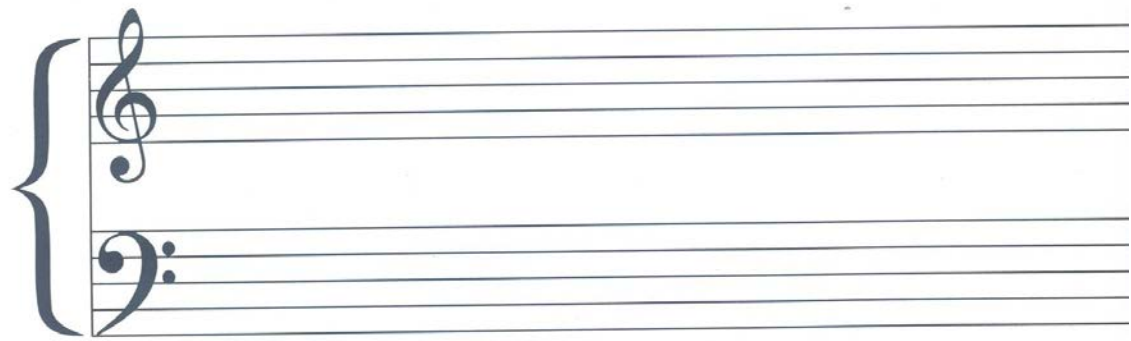
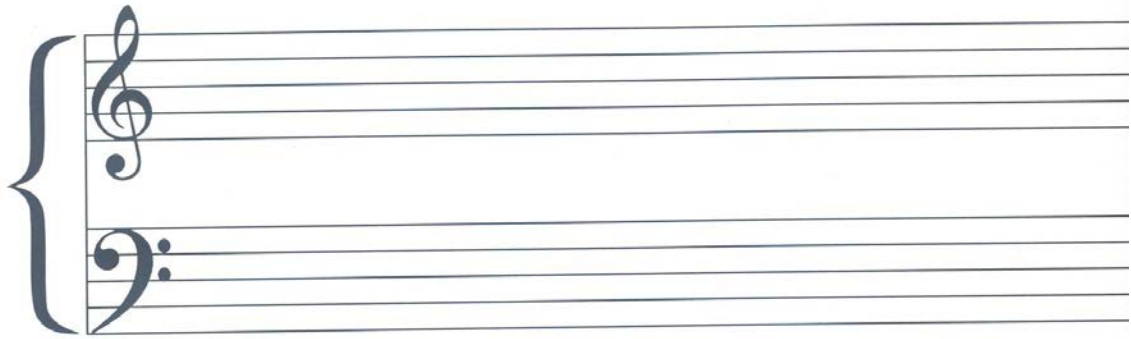
The page contains ten sets of blank musical staves, each consisting of five horizontal lines. These staves are arranged vertically down the page, providing space for students to write musical notation.

NAME _____ DATE _____



NAME _____ DATE _____





NAME _____ DATE _____

The image displays two identical sets of musical staves, each consisting of five horizontal lines. At the bottom of each set, a treble clef (G-clef) is positioned on the first line, and a bass clef (F-clef) is positioned on the fourth line. A large, dark blue curly brace is drawn below the two clefs, spanning the width of both staves. The rest of the staves are empty, providing space for musical notation.