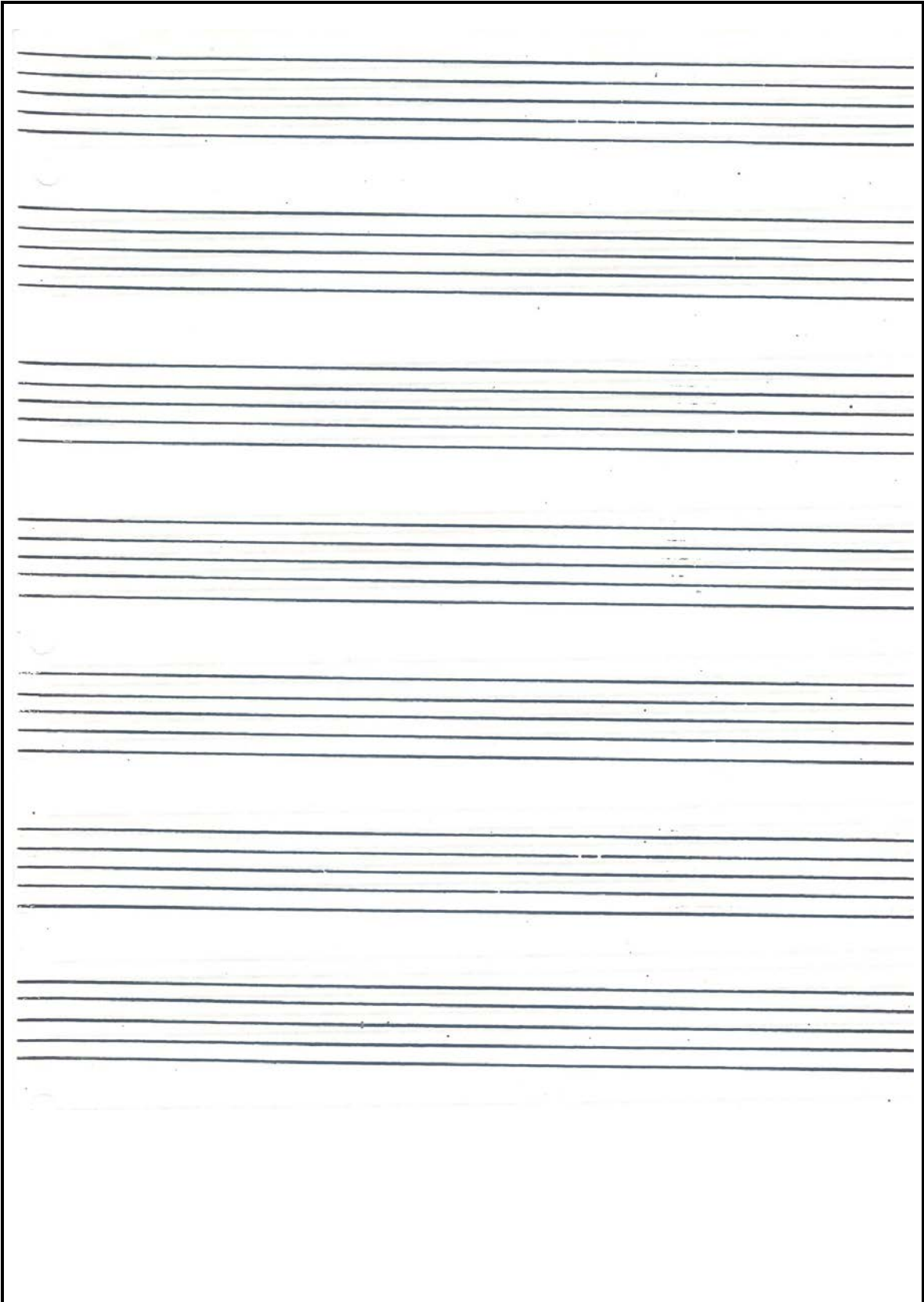
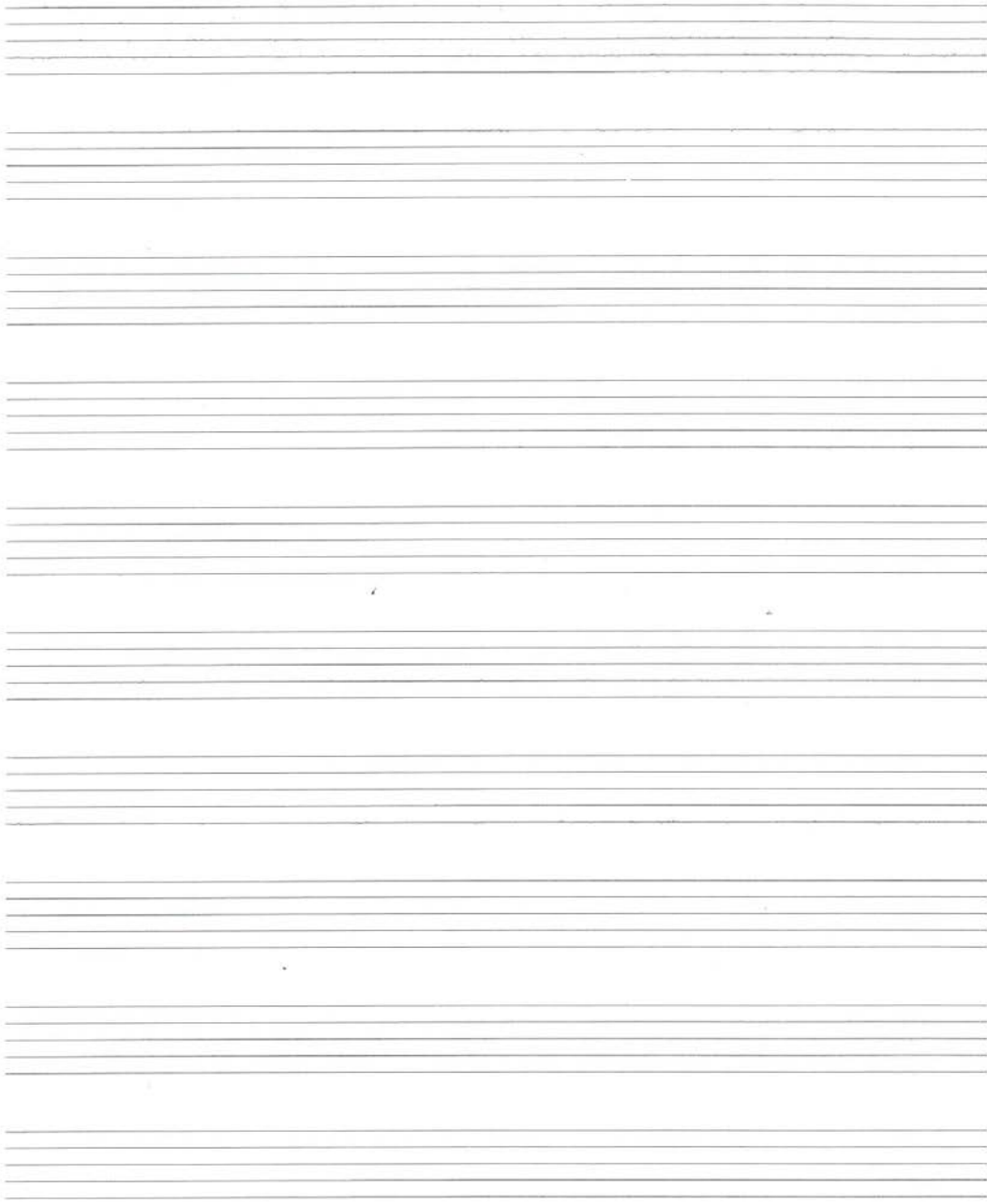


A
VARIETY
OF
STAFF
PAPER
SIZES







Name _____ Title _____ Date _____

The page contains ten sets of blank musical staves, each consisting of five horizontal lines. These staves are arranged vertically down the page, providing space for students to write musical notation.

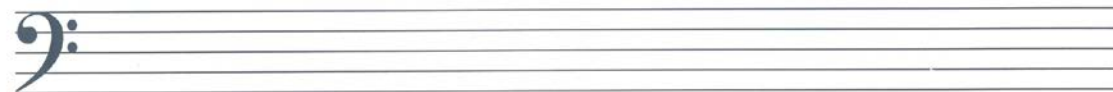
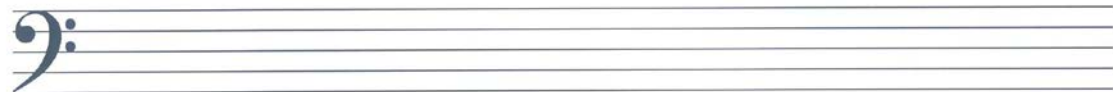
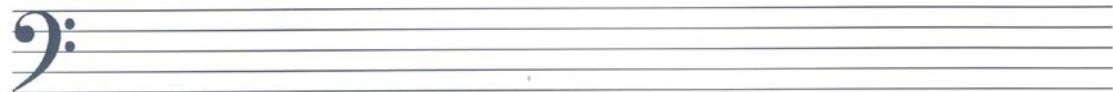
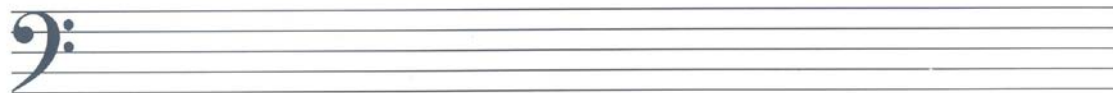
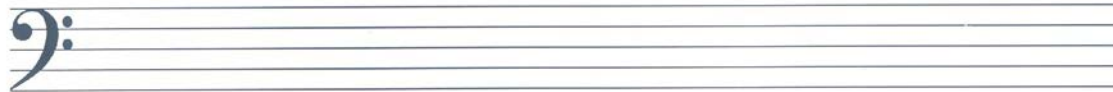
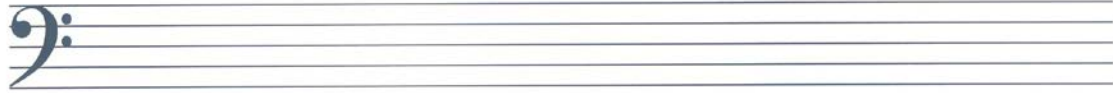
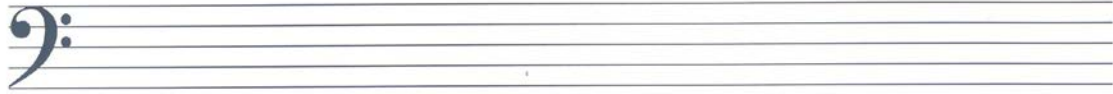
NAME _____

DATE _____

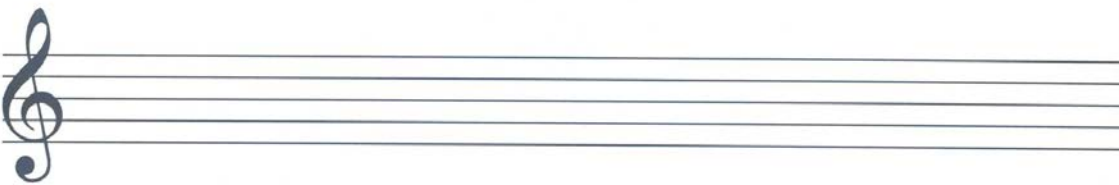
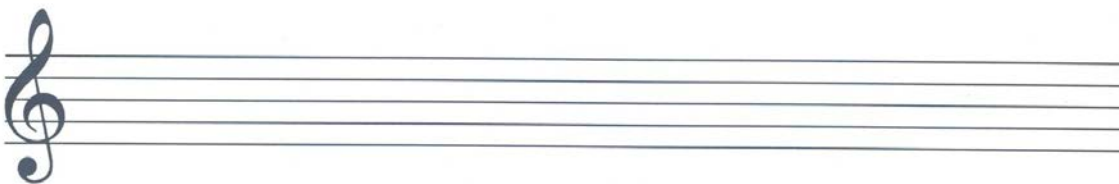
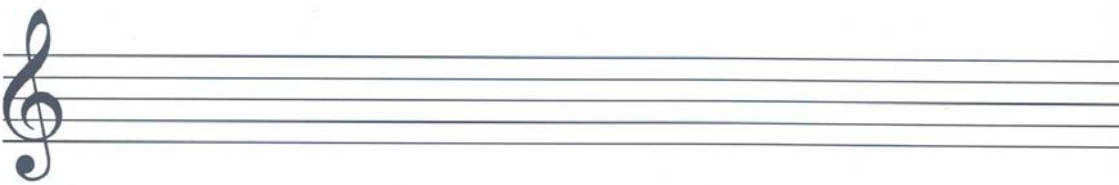
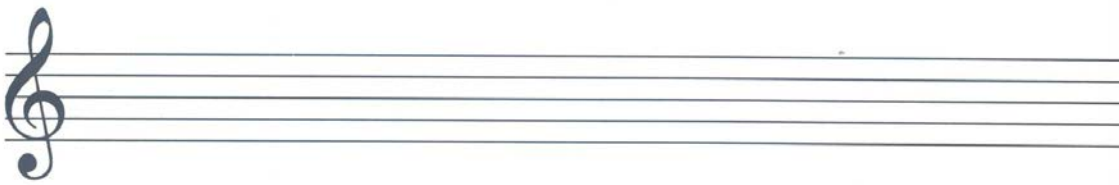
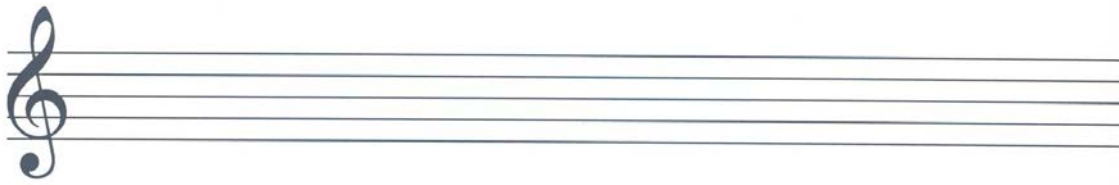
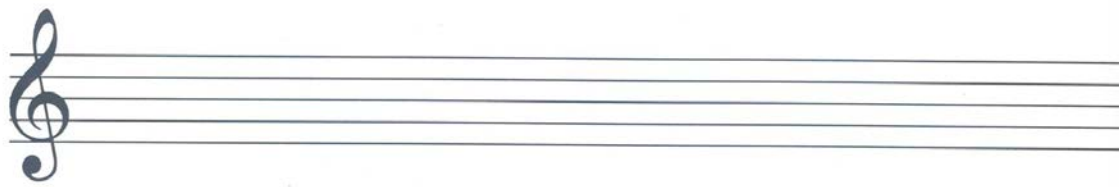
TITLE _____

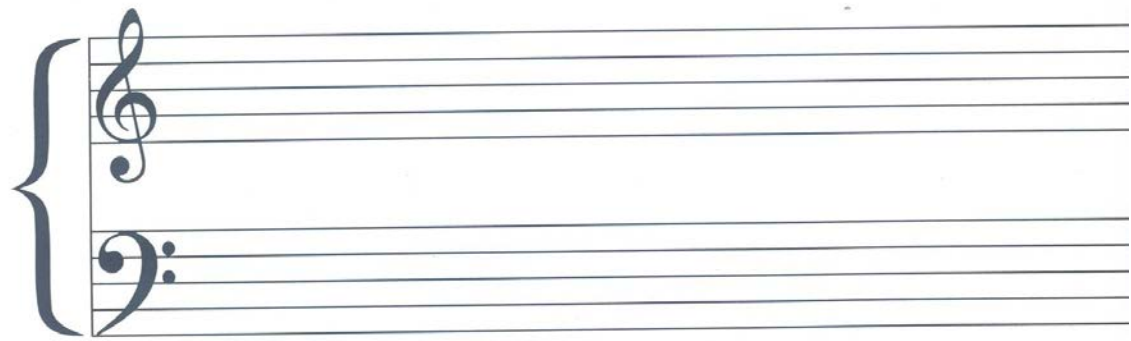
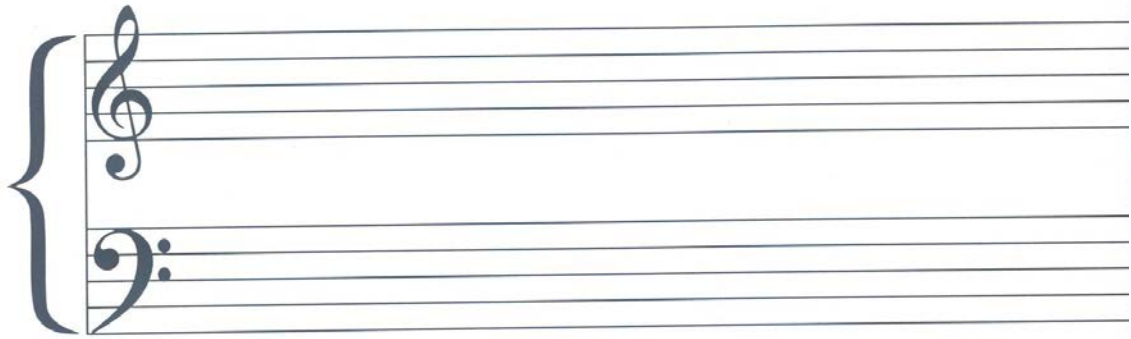
The page contains ten sets of blank musical staves, each consisting of five horizontal lines. These staves are arranged vertically down the page, providing space for students to write musical notation.

NAME _____ DATE _____



NAME _____ DATE _____





NAME _____ DATE _____

The image displays two identical sets of blank musical staves, each consisting of two five-line staves. The left set features a treble clef on the upper staff and a bass clef on the lower staff, with a large brace underneath both staves. The right set is identical but lacks the clefs and brace. The entire page is enclosed in a black rectangular border.