

CreativeStudio Installation Guide

In brief:

Download the CreativeStudio upgrade
(or obtain a program CD)

Remove the current CS program

Install the new CS program



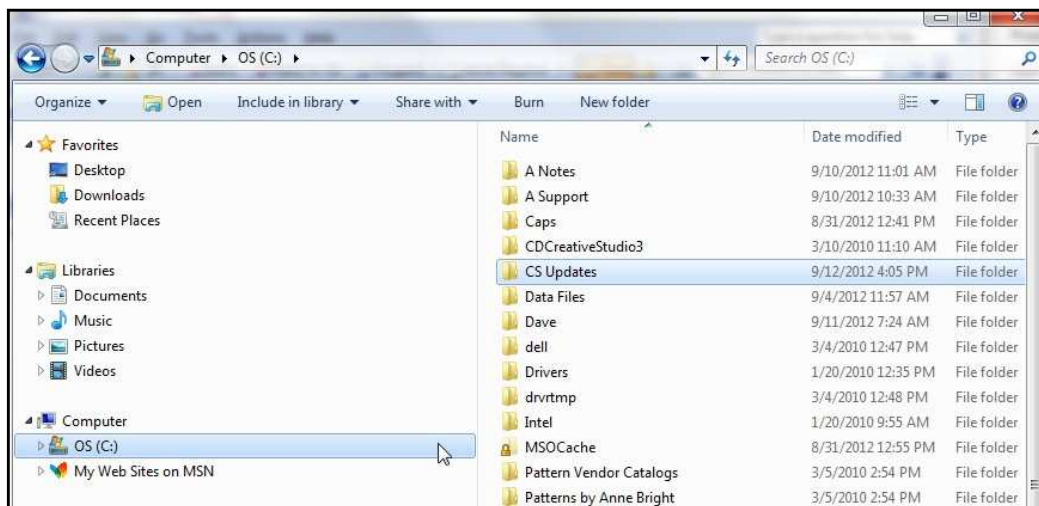
Detailed install instructions and suggestions (Windows 7 Shown) ****WINDOWS XP Notes in this font****

Suggested

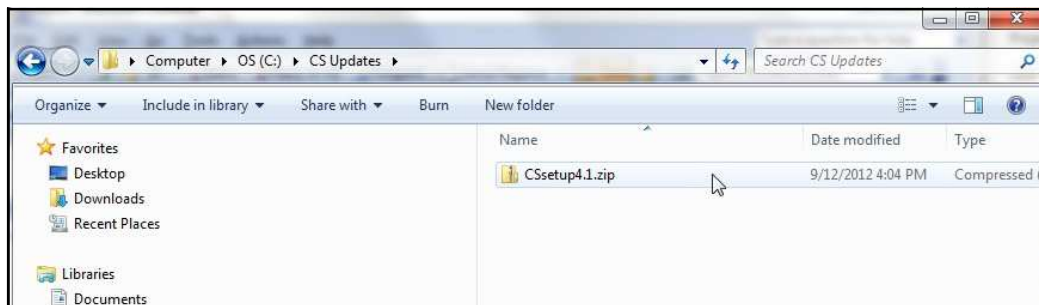
Create a folder on C: for
CS Updates

How to:

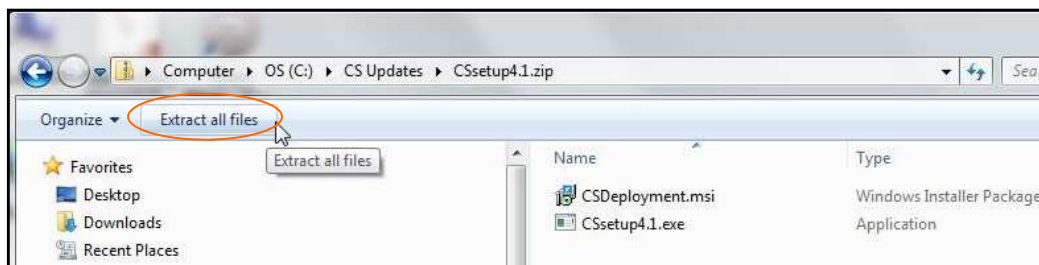
With Windows explorer, select the
C: then click on New Folder. Name
“new folder” as CS Updates



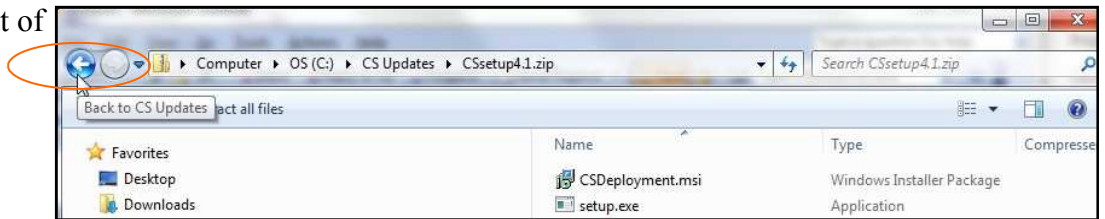
Copy the downloaded
CSsetup.zip folder into the
CS Updates folder



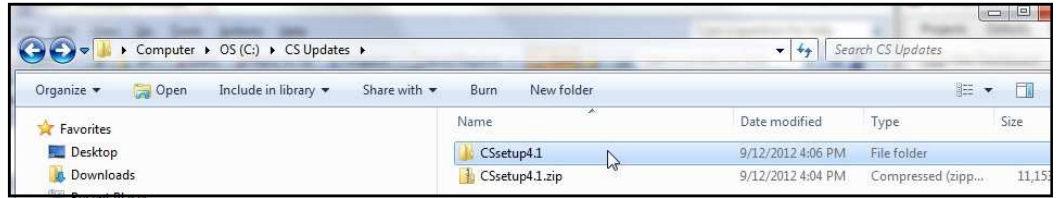
Double Click on the CSsetup
Zip folder, this will display
the files. From the menu bar
click on Extract all files



Click on Back to come out of the zip folder to the CS Updates folder



See two folders:
 CSsetup File Folder
 CSsetup Compressed



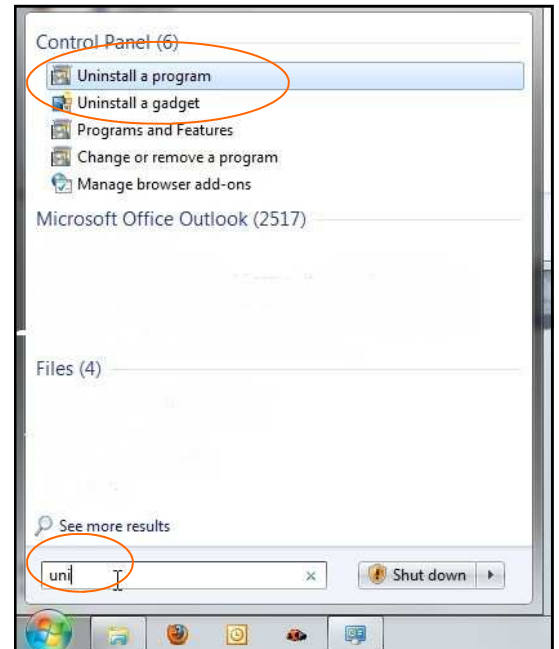
Must Do

Uninstall the current CreativeStudio program.
 (does not remove patterns or projects)

Win 7

Click on start menu (lower left corner of screen)
 On the Search line, enter letters for uninstall
 (as shown, with letters 'uni' results are showing up)

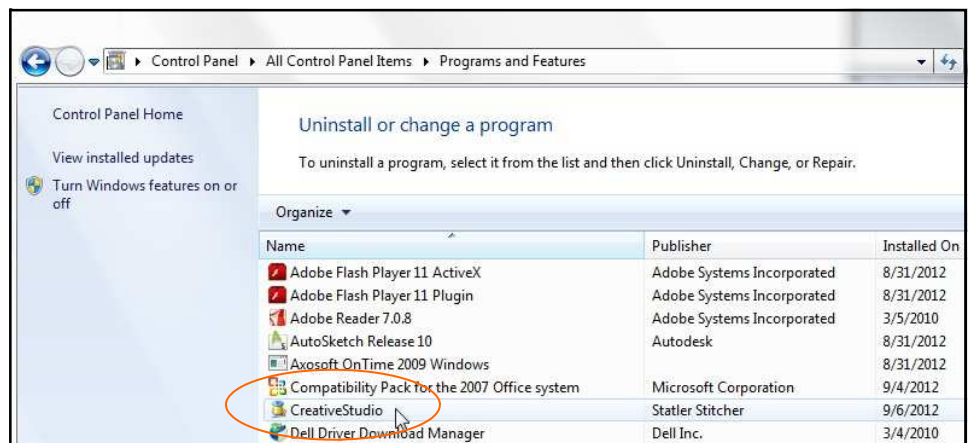
Click on 'Uninstall a program'



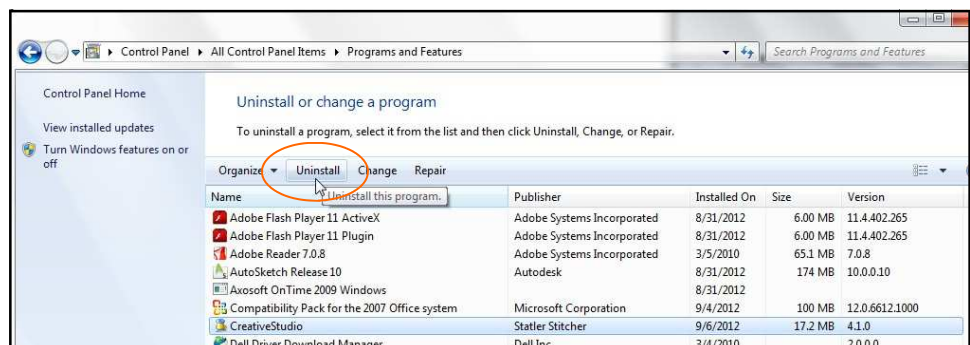
Win XP

Click on Start, settings, control panel, choose add or remove programs

From Uninstall or Change a Program', click on CreativeStudio To select.



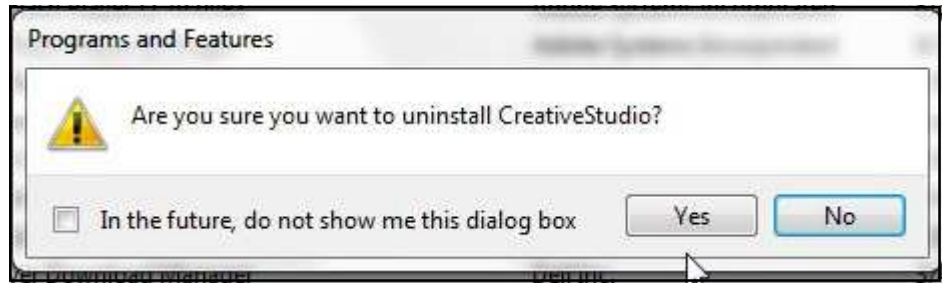
With CreativeStudio selected, click on 'Uninstall' from the option bar that appears.



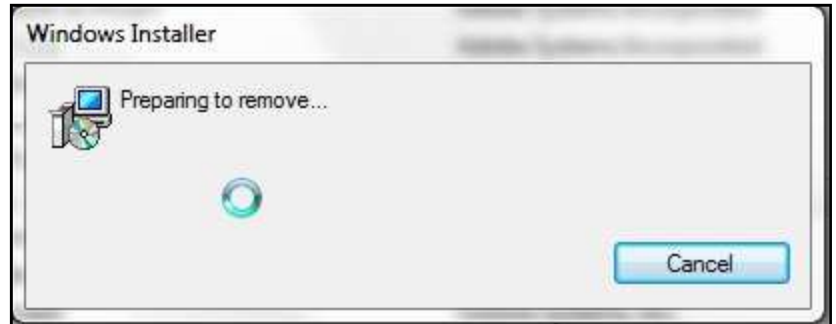
Win XP

Click on Remove

Click on Yes to approve the Uninstall of CreativeStudio

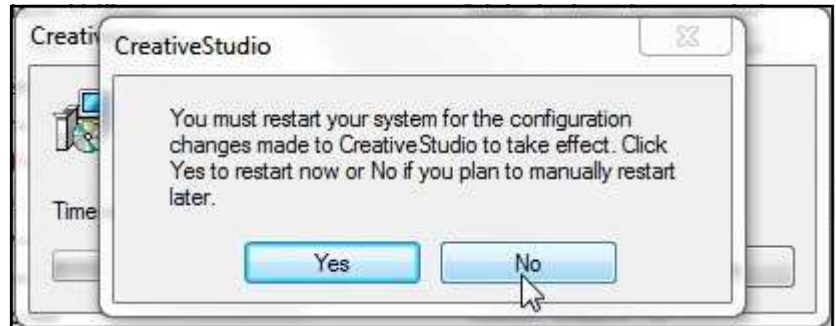


A box will appear indicating that Windows is preparing to remove the program.

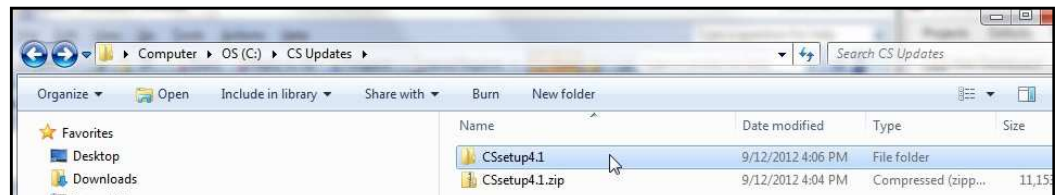


The next box indicates that the system must be restarted for configuration changes.

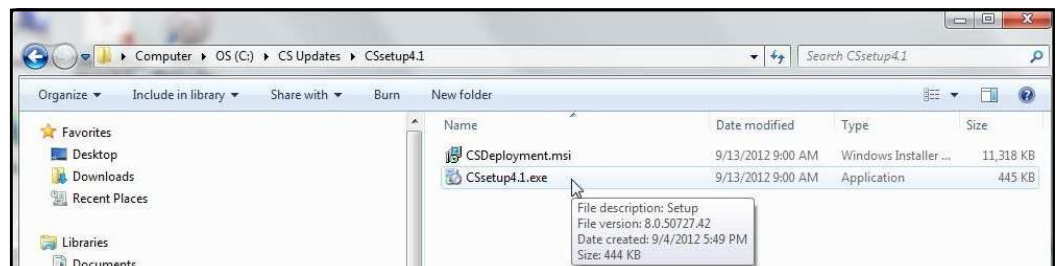
Click on NO



Double Click on the CSsetup File Folder



Double Click on CSsetup to begin the CS installation

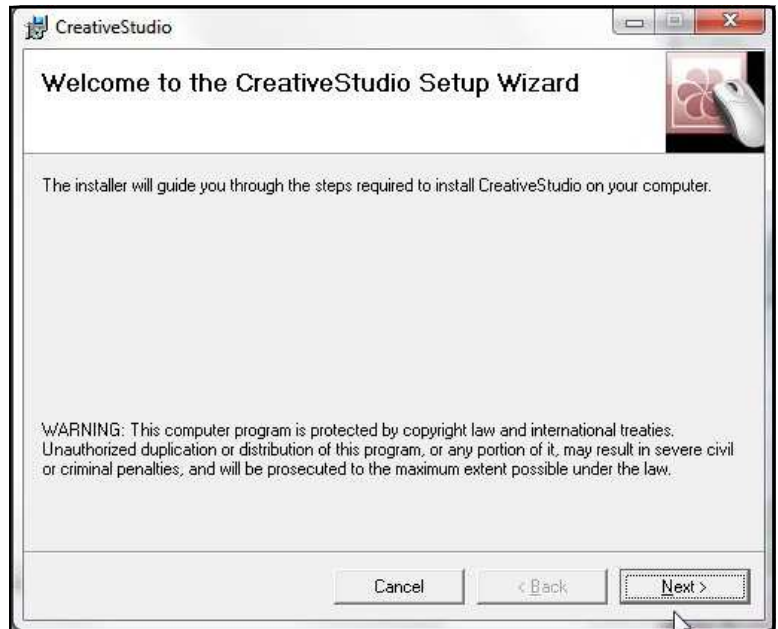


A Security Warning will appear, click on Run



The Welcome to the CreativeStudio Setup Wizard

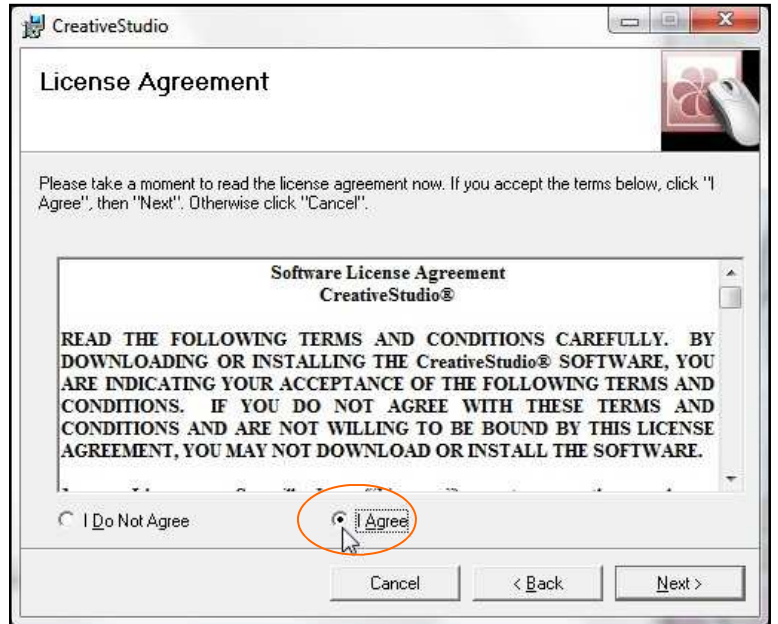
Click on Next



The License Agreement comes up next.

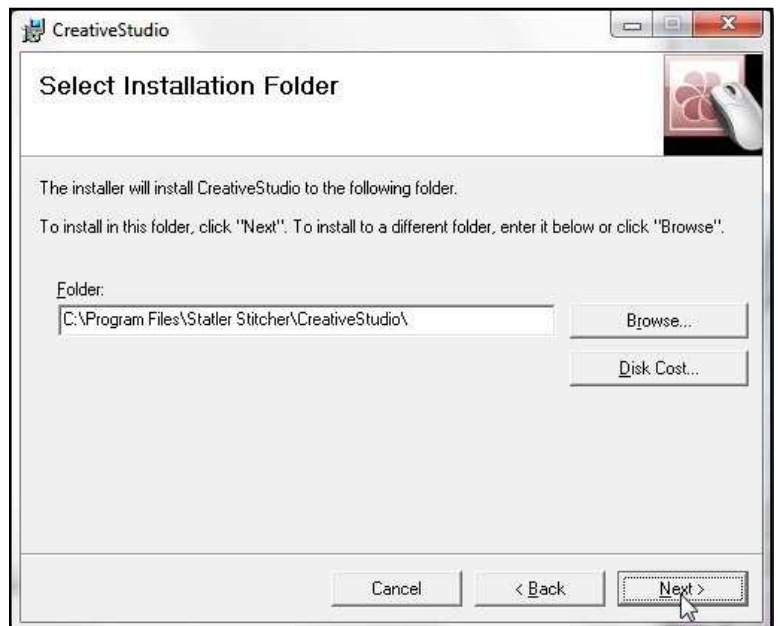
Click on I Agree

Click on Next



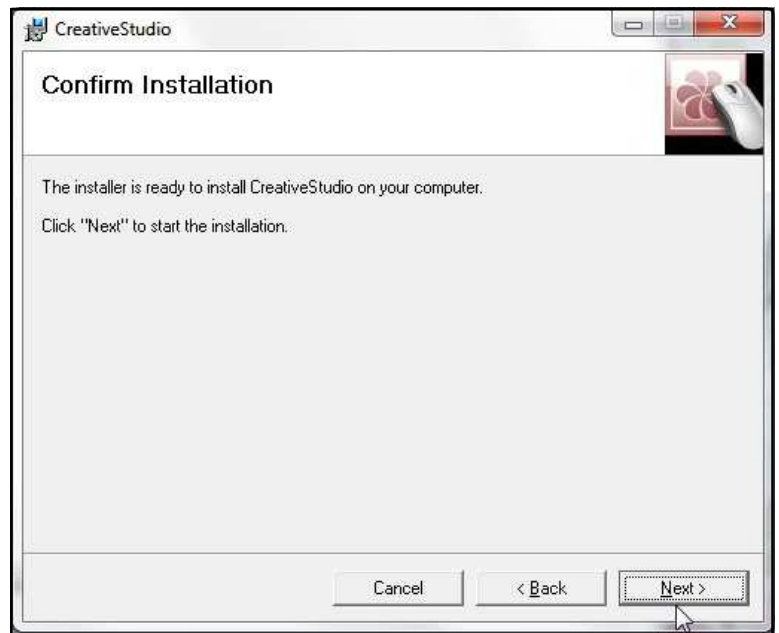
Select Installation Folder.

Click on Next



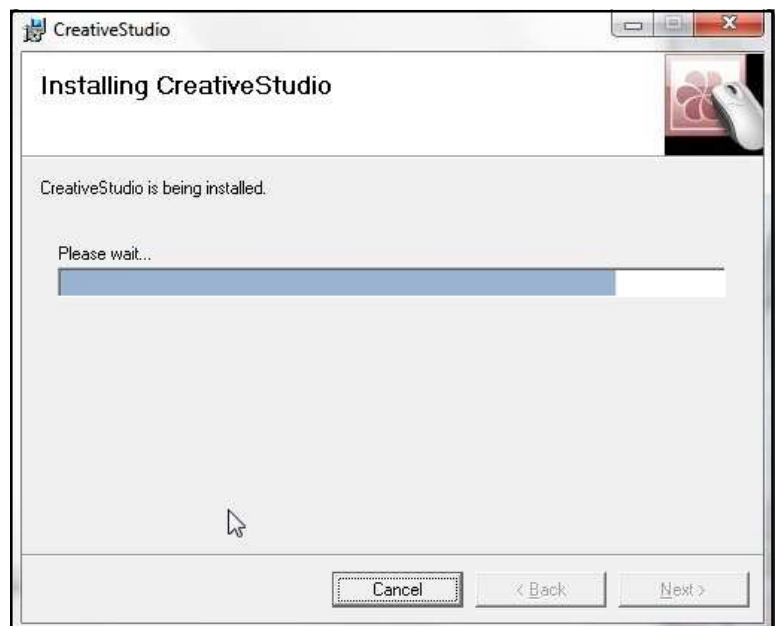
Confirm Installation

Click on Next



Installing CreativeStudio

No change



Select Controller

The Default is for MOD F or G,
Ethernet Controller for Gammill

If you have a MOD F or G
Click Next

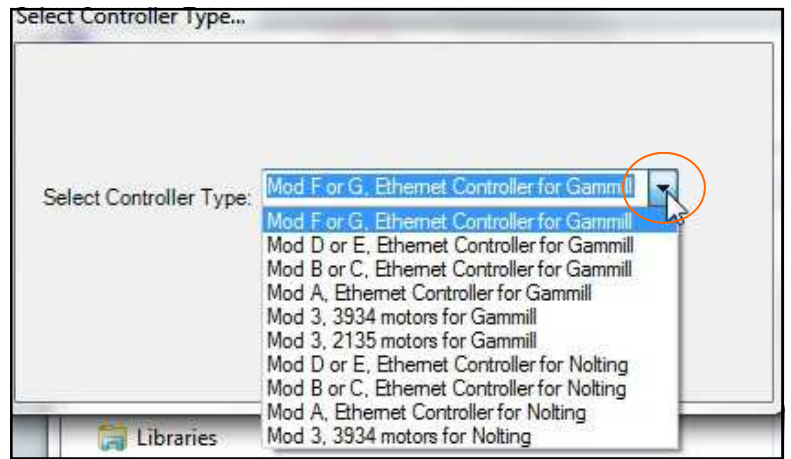


Select Controller Type

If you do not have a MOD F or G controller

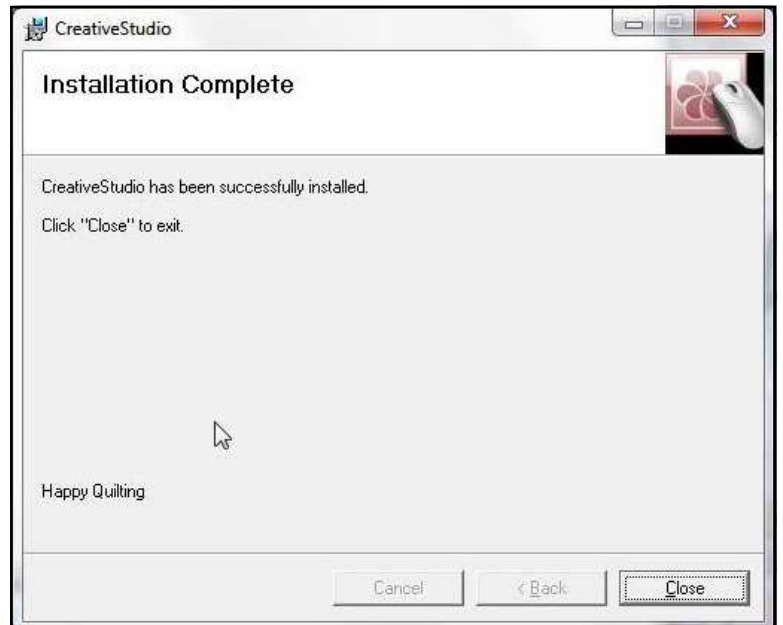
Click the Down Arrow on the right side to see the drop down list of controllers. Choose the correct controller for your system.

Click on Next



Installation Complete

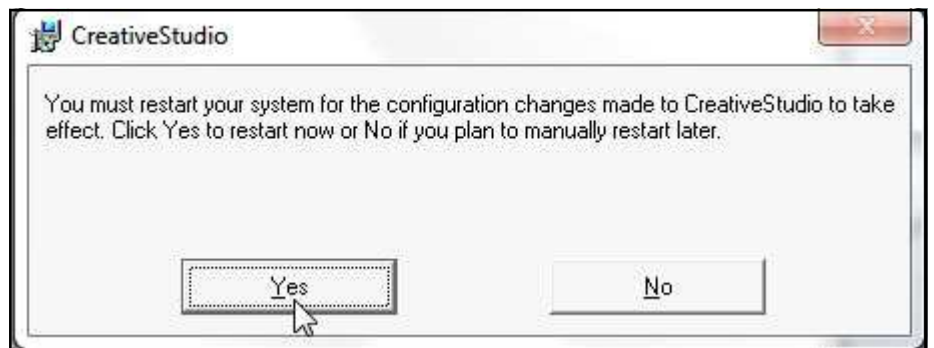
Click on Close



You Must Restart the system

Click on Yes

After the computer has restarted. Locate the CreativeStudio program Icon. The Icon can be dragged to a Location of your choice.



The first time CS is run, add a pattern into the program. Click on the Tools Menu, select and run Calibrate Stitcher Motor. Follow the On Screen Prompts.

Need Help:

Call Statler Support @ 866 830 3738 menu option 1
Or send email to Support@statlerstitcher.com