

## Leadership Strategies for Professional Women (LSPW) at Coles College of Business

Leadership Strategies for Professional Women is an annual program offered by Kennesaw State University Coles College of Business Executive Education Programs designed to prepare participants to reach the next level of leadership in their careers. Participants learn from top women executives who have climbed the ranks and become experts at leveraging on-the-job experience with academic research. This program helps improve leadership capabilities and performance of high-potential women. Erin Wolf, Managing Partner at SuiteTrack LLC and Executive in Residence at KSU's Coles College of Business, is dedicated to developing and accelerating the advancement of female professionals. As a facilitator of **Leadership Strategies for Professional Women**, she urges professional women to develop and improve leadership skills to increase their company's bottom line and ensure success of their career. According to Wolf, "Only 3% of Fortune 500 CEOs are women, and we hold only 10-15% of Fortune 500 corporate and board seats. This is despite the fact that we are at least 50% of the professional workforce. So what can we do about this? There are some actions that are out of our control, but plenty that are within it. Here is something that is within our control: we can improve our leadership skills so we know what it takes to become a leader, and what it takes to stay there." In addition to Wolf, lead faculty for the program includes: Gail Evans, New York Times bestselling author of *Play Like a Man, Win Like a Woman*.



LSPW Class of 2012

A few seats in the program are still available. Don't miss this opportunity to gain skills of exceptional leadership. The two part program (March 14-15, 2013 and April 18-19, 2013) includes the topics: Personal Branding, Networking: Unleash the Power of Relationships, Understanding Personal Motivation using DISC, Language, Communication, and Influence; Art of Tactful Self-Promotion, Value-Creating Negotiation for Yourself, and How Remarkable Women Lead. For more information or to register, visit: <http://coles.kennesaw.edu/execed/lspw/>



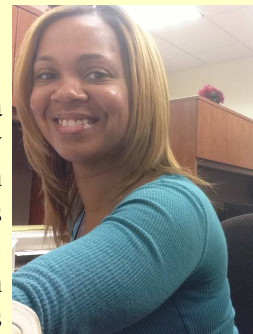
Shameka Lloyd

### **Congratulations to Siegel Institute Intern and KSU Dance Major Graduate, Shameka Lloyd**

The Siegel Institute congratulates Shameka Lloyd on her upcoming graduation from KSU. Shameka is a senior Dance major and has enjoyed working with the KSU Department in Dance and the KSU Dance Company. Shameka is involved with several campus organizations including: Phi Sigma Pi National Honors Fraternity, National Residence Hall Honorary, Golden Key, and the National Society of Collegiate Scholars. Recently she was inducted into "Who's Who Among College Students and Universities" and has maintained her name on the Dean's List for several semesters. One of her most recent accomplishments includes winning 3rd place in Edge Connections "Plan for Profit" business plan competition here at KSU. In her spare time, Shameka enjoys competing in preliminary pageants for the Miss America / Miss Georgia pageant system. She is dedicated to implementing her platform of "Enriching Children in Fatherless Homes and Minimizing Behavioral Issues." Shameka has greatly enjoyed working at the Siegel Institute and has gained a great deal of knowledge in doing so.

### **The Siegel Institute Welcomes GRA and KSU Graduate Student, Mia Wolfrey**

The Siegel Institute welcomes new Graduate Research Assistant Mia Wolfrey! Mia is a Clinical Masters Social Work (MSW) major here at KSU and holds a B.S. degree in Psychology from Walden University. Mia is a member of Psi Chi (The International Honor Society in Psychology), a student member of NASW (National Association of Social Workers) and is currently completing her first year, second semester Practicum with Paulding County Schools. Mia enjoys working with young adults and volunteers with Kidz2Leadrz as a mentor and with Camp Hope as a summer counselor as well as volunteering with PADV and the Crime Victims Advocacy Council when not in class or gathering practicum hours. Mia is the mother of 3 totally awesome boys; they are active members of Mount Bethel UMC and reside in Cobb County. Mia is extremely excited about being at the Siegel Institute and all the knowledge she will acquire as a Research Assistant and has already begun working on several projects.



Mia Wolfrey

## ILEC 8920: Graduate Student Leadership Experience

This semester, the Siegel Institute is featuring a course that gets graduate students out of the classroom and into the offices of diverse leaders in the Metro-Atlanta area. As a hybrid course, the students openly discuss leadership literature in an online forum format, and meet face-to-face to apply the literature to real world experiences as presented from skilled professionals from a variety of backgrounds. This semester, the students will be meeting with Phil Jacobs, retired President of Business Communications Services of AT&T-Southwest, Brenetia Adams-Robinson, Founding Executive Director of Proverbial Peace Revived, Major General Maria L. Britt, USA (retired)/KSU Associate VP of Operations (current), Dr. Daniel S. Papp, President of Kennesaw State University, Joe Kaufman of Engauge, and Erroll B. Davis, Jr., Superintendent of Atlanta Public Schools. Each of these speakers will provide a unique look into the trials and tribulations of their positions and sectors. Please keep a lookout for the personal reflections from the students in an upcoming newsletter.

### **PHENOMENAL WOMEN'S CONFERENCE**

*Partner, Inspire, Change: Leading from Where You Are*

SAVE THE DATE!

13th Annual Phenomenal Women's Conference  
Friday, March 22, 2013!  
Kennesaw State University Center

The Siegel Institute proudly announces Dr. Elizabeth (Beth) Hackett, Associate Professor of Women's Studies and Philosophy, Chair of the Women's Studies Program, and Director of the Center for Teaching and Learning at Agnes Scott College as the second keynote speaker for the March 22 Phenomenal Women's Conference. She earned her B.A. from the University of Notre Dame and her M.A. and Ph.D. in Philosophy from the University of Pennsylvania. Her teaching and scholarly interests include: feminist theory, feminist legal theory, philosophy of race, feminism and sexuality, and mindfulness. She is the co-author of *Theorizing Feminisms: A Reader* (Oxford University Press, 2006), and her article, "Gender as Mere Difference," appears in *Men and Masculinities*, Vol. 11, No. 2, Dec. 2008.



Beth Hackett, Ph.D.

### **STUDY ABROAD IN 2014: ILEC 8930 LEADERSHIP AND ETHICS ABROAD**



Rio Celeste (Light Blue River) waterfall in Costa Rica

The Siegel Institute's first ever study abroad course, ILEC 8930, in Costa Rica, will take place over a five-week period in summer 2014. The course focuses on a human paradigm of leadership—the ability to connect with people with whom you work, to create an ethical culture in the work place, and engage and motivate others while appealing to their strengths. Participants will communicate with each other face-to-face and online prior to departure and online after returning to the U.S. Contact Dr. Linda Johnston at 678-797-2000 or [ljohnst9@kennesaw.edu](mailto:ljohnst9@kennesaw.edu).

Dates of Travel: TBA

Cost: TBA – will include tuition, course materials, airfare, local transportation, housing, and meals

Location: The University of Peace; The United Nations International Graduate School

Credit: Three (3) credit hours

Prerequisites: Acceptance into a KSU master's or doctoral degree program and/or the Siegel Institute's Graduate Certificate Program in Leadership and Ethics



## Calendar of Events

- ◆ 3/11/13 **PWC Pre-Conference Workshop:** Strategies for Managing Stress in the Workplace.
- ◆ 3/14/13 **Lunch and a Movie:** "The Emperor's Club," a 2002 drama that tells the story of a prep school teacher and his students. Facilitated by Dr. Lee Digiovanni, Associate Professor of Early Childhood Education.

(\* Complimentary film viewing and lunch provided to all participants.)

- ◆ 3/22/13 **Phenomenal Women's Conference.**
- ◆ 4/4/13 **Lunch and a Movie:** Lorenzo's Oil. Facilitated by Dr. Marilyn King, KSU Associate Director of Graduate Nursing (\* Complimentary film viewing and lunch provided to all participants).

### Dr. Linda Johnston Continues Research on Female Bullying

Dr. Linda Johnston of KSU's Siegel Institute for Leadership, Ethics and Character is continuing her research project entitled "The Long-term Effects of Female Bullying on Adult Women and their Resolution of Conflicts." The project aims to study the long term effects of childhood bullying experiences on adult women and to ascertain the relationship between the bullying experience and the adult woman's resolution of conflicts. If you are female and interested in participating, there is still time to go online and take the survey (completely anonymous) at <https://www.surveymonkey.com/s/KVFNXWM>. After completing the on-line portion of the survey, participants will have the opportunity to indicate their willingness to be interviewed about bullying experiences at a later time. For additional questions, contact Dr. Johnston at 678-797-2000 or by email at [ljohnst9@kennesaw.edu](mailto:ljohnst9@kennesaw.edu).



Dr. Linda Johnston

KENNESAW

FUND

The Siegel Institute Ethics Scholarship was established to help support a student interested in performing research in leadership or ethics at the Siegel Institute for Leadership, Ethics & Character at Kennesaw State University. Please be sure to designate the Siegel Institute as the recipient of your donation; your gift will help a deserving graduate student. Students can apply now for the scholarship using the online application at <http://www.kennesaw.edu/scholarships>.

Kennesaw State University • Office of Development  
1000 Chastain Road, MD 9102  
Kennesaw, GA 30144-5591  
Telephone: (770) 423-6027 • Fax (770) 432-6532  
[www.kennesaw.edu/giving](http://www.kennesaw.edu/giving)

Name: \_\_\_\_\_  
Business Name: \_\_\_\_\_  
Home Address: \_\_\_\_\_  
Home Phone: \_\_\_\_\_  
Work Phone: \_\_\_\_\_  
Email: \_\_\_\_\_

I prefer to be listed for recognition as follows: \_\_\_\_\_

### Siegel Institute Ethics Scholarship

\$5000  \$2500  \$1000  \$500  \$250  \$100  \_\_\_\_\_

\_\_\_\_\_ My gift is unrestricted to be used where the need is greatest.

My gift is reserved for the Siegel Institute Scholarship.

#### Preferred Payment Options:

- Check [Make check payable to: Kennesaw State University Foundation]
- Credit Card: Visa - MasterCard - American Express - Discover
- Account No.: \_\_\_\_\_
- Expiration Date: \_\_\_\_\_
- Signature: \_\_\_\_\_



# THE VOICE OF ETHICAL LEADERSHIP

March 6, 2013

The Newsletter of the Siegel Institute for Leadership, Ethics & Character

Edited by Mia Wolfrey, MSW

## PHENOMENAL WOMEN'S CONFERENCE

Partner, Inspire, Change: Leading from Where You Are

SAVE THE DATE!

13th Annual Phenomenal Women's Conference

Friday, March 22, 2013!

Kennesaw State University Center

### Pre-Conference Workshops Leading Up to the 2013 Phenomenal Women's Conference

There is still time to register for either or all of the remaining pre-workshops to the 2013 PWC Conference. Registration for these workshops (which includes a box dinner and workshop materials) is \$25.00 per workshop, per person. Please visit the website of the Siegel Institute to complete and submit a registration form.

**Workshops will be held 5:30 pm - 8:30 pm at 3391 Town Point Drive, Room TP 1600, Kennesaw, GA. 30144**

2/11/13 – *How to Effectively Use Assertiveness in Your Life*

facilitated by Ms. Jacqueline Oduselu, Professional Counselor and CEO of Peacemaker Solutions, LLC

2/18/13 – *How to Become More Confident in Your Personal and Professional Life*

facilitated by Ms. Lisa Fenn, KSU Senior Facilitator and Executive Coach of Global Novations

3/11/13 – *Strategies for Managing Stress in the Workplace*

facilitated by Dr. Dede Yow, KSU Professor Emerita of English and American Studies, Certified Yoga Instructor



The Siegel Institute proudly announces **Ms. Jacqueline Oduselu**, a Licensed Associate Professional Counselor and National Certified Counselor, as a facilitator of the 2/11/2013 PWC pre-conference workshop, "How to Effectively Use Assertiveness in Your Life." Jacqueline earned her B.S. in Human Services from Kennesaw State University, her M.S. in Professional Counseling from Georgia State University, and is a counseling professional at Ray of Hope Counseling Services, Inc., as well as being an experienced, registered neutral with the Supreme Court of Georgia.



The Siegel Institute would like to thank **Ms. Maria Britt** for sharing top leadership secrets with a SOLD OUT, standing room only, crowd at the 1/24/2013 PWC pre-conference workshop entitled, "Transferable Leadership Techniques." Maria attributes her success as the Commanding General of the Georgia Army National Guard and how she has transferred these techniques to her new role as Kennesaw State University's Associate Vice President of Operations. Maria provided an evening filled with real life stories and real world scenarios about making it to the top!

The Siegel Institute for Leadership, Ethics & Character is now on **Facebook!**

Please LIKE US at <http://www.facebook.com/pages/Siegel-Institute-for-Leadership-Ethics-and-Character/406433209405964>

Also connect with the Siegel Institute on **TWITTER** at <https://twitter.com/SiegelKSU>