



SOUTH FLORIDA NATIONAL PARKS TRUST

Inside this issue:

Design drawings of the new Big Cypress Swamp Welcome Center 2

New Documentary tells the story of the "Western Everglades" 4

Support the Big Cypress Swamp Welcome Center by making a donation 4

Big Cypress Swamp Welcome Center

Donor Opportunities

Individual, corporate and foundation donors can support the Big Cypress Swamp Welcome Center by underwriting specific exhibits or by making a contribution to support the overall campaign. All gifts of \$1,000 or more will be recognized on a Donor Wall inside the Welcome Center. For a complete list of Welcome Center exhibits available for sponsorship and more details on donor recognition, contact the South Florida National Parks Trust at 305.665.4769.

Welcome to the "Western Everglades"

Big Cypress Swamp Welcome Center Nears Completion

The Big Cypress Swamp is an amazing place...

— A place so flat that mere inches make a difference.

— A place so large that the name itself, Big Cypress, only hints at the expanse of this ecosystem (> 2,400 square miles).

— A place so wild that orchids bloom in splendid isolation and panthers roam the land, rarely seen by people.

The Big Cypress is an amazing place, but it remains a mystery for many.

Few people truly appreciate what makes this incredibly diverse region of the Greater Everglades — a place often called the "Western Everglades" — different from its better known cousin to the east.

The Big Cypress Swamp Welcome Center promises to change that dynamic when it opens in February 2010.

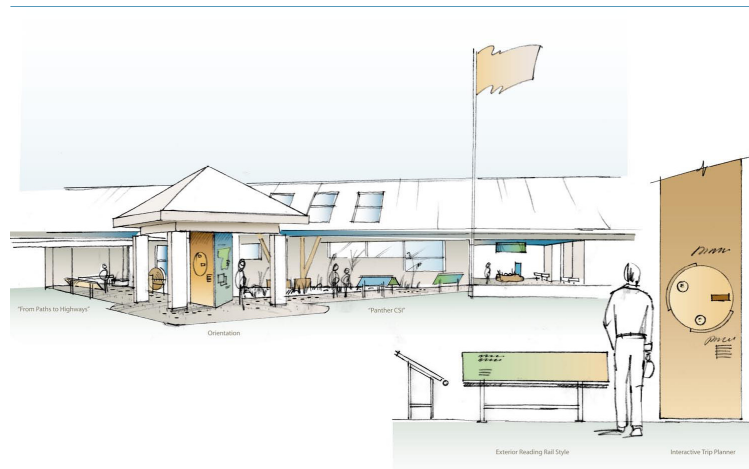
Tens of thousands of visitors are expected to visit the Welcome Center each year to learn about the Big Cypress, its wetlands and wildlife.

The Big Cypress National Preserve is building the \$2.2 million center on U.S. 41 (Tamiami Trail) in Collier County.

Construction began in late 2008 and is now nearly complete, but the project itself won't be finished until the center's exhibits are installed.

The South Florida National Parks Trust is seeking to raise \$250,000 to pay for exhibits that will explain the Big Cypress, its history, hydrology and habitats, to visitors.

The Trust invites you to join us in supporting a project that will welcome more people, especially children, to the Western Everglades, and enhance the quality of life and education in Florida.



Construction of the new Big Cypress Swamp Welcome Center began in November 2008.

INSIDE:

More images of the Welcome Center and its exhibits.

Design Sketch of new Big Cypress Swamp Welcome Center



Board of Trustees

Carlos Arazoza
Chairman

**Jack Curlett, Ross Fischer,
Armando Guerra, Glenn
Harris, Lacey Hoover,
Howard Isaacson,
Timothy Koenig, Neal
McAliley, Tamara McKeown,
Juan Mendieta,
Alberto Mitrani, Wayne
Rassner, Hunter Reno,
Inaki Saizarbitoria,
Rainer Schael, Ellen Siegel,
Robert Skinner
and Patrick White**

The South Florida National Parks Trust is a 501(c)(3) not-for-profit organization that supports South Florida's four national parks.

As the primary fund-raising partner for these parks, the Trust raises money from individuals, businesses and foundations to support park programs and projects in five areas:

- Environmental Education
- Visitor Services
- Resource Protection
- Volunteer Activities
- Community Outreach

Since 2002 the Trust has successfully funded more than 30 projects in South Florida's national parks representing an investment of more than \$2 million.

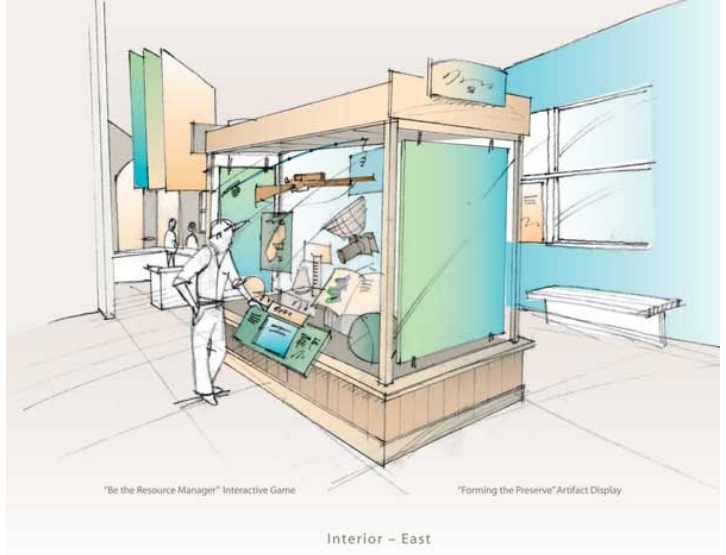
For a list of Trust projects, visit www.southfloridaparks.org

Big Cypress Swamp Welcome Center Design Sketches

Right: History of the Big Cypress, Interior of Welcome Center.

The Welcome Center will introduce visitors to the mosaic of public lands that protect the Big Cypress, including the Big Cypress National Preserve, Fakahatchee Strand Preserve State Park and the Florida Panther National Wildlife Refuge.

Below: Interior view of Welcome Center



Big Cypress Swamp Welcome Center Design Sketches

The South Florida Trust's Big Cypress Campaign

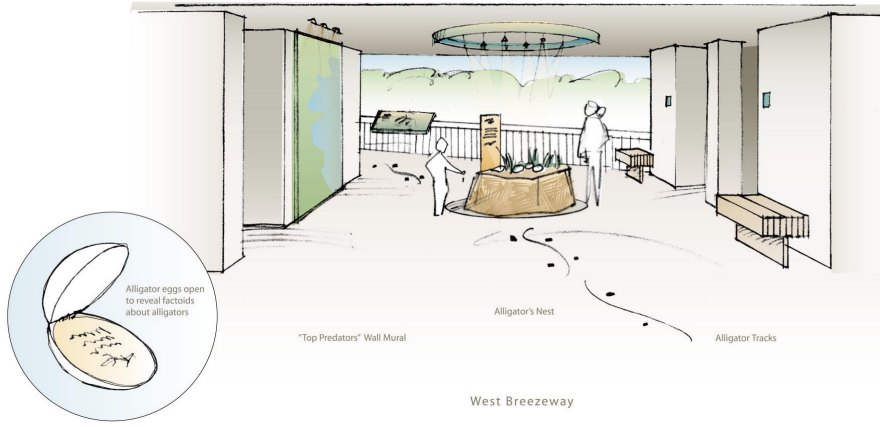
The South Florida National Parks Trust has embarked on a fundraising campaign to purchase exhibits for the new Big Cypress Swamp Welcome Center on U.S. 41 (Tamiami Trail) in Southwest Florida.

The Trust is seeking to raise \$250,000 in matching funds to purchase 19 permanent exhibits for the center. All gifts will be matched dollar for dollar by the Big Cypress National Preserve.

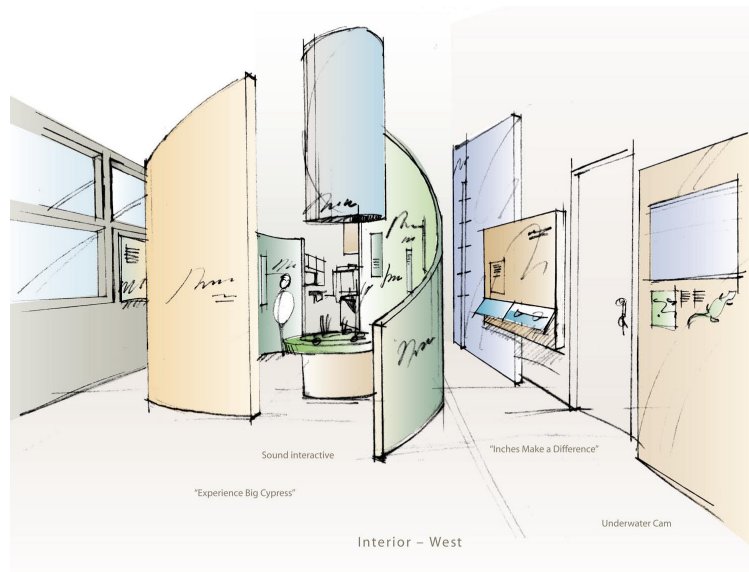
Construction of the center began in November 2008 and is now nearly complete. An official ribbon-cutting ceremony is scheduled for February 2010.

When complete, the center will tell the story of the Big Cypress, sketch its history and describe its wildlife for an estimated 250,000 visitors a year.

The Trust's Big Cypress fundraising campaign is being led by Mr. Patrick White of Porter Wright Morris & Arthur and Mr. Howard Isaacson of Merrill Lynch. Mr. White and Mr. Isaacson live in Naples.



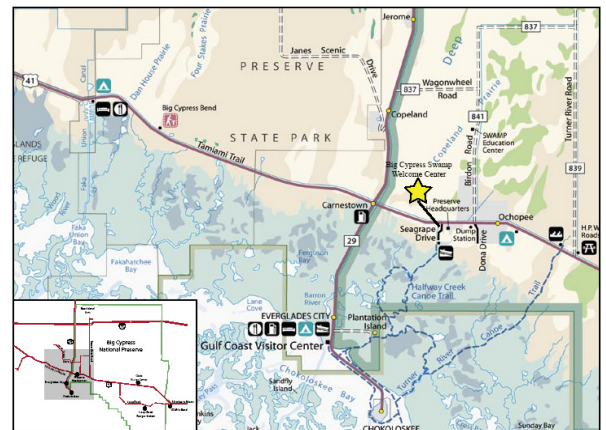
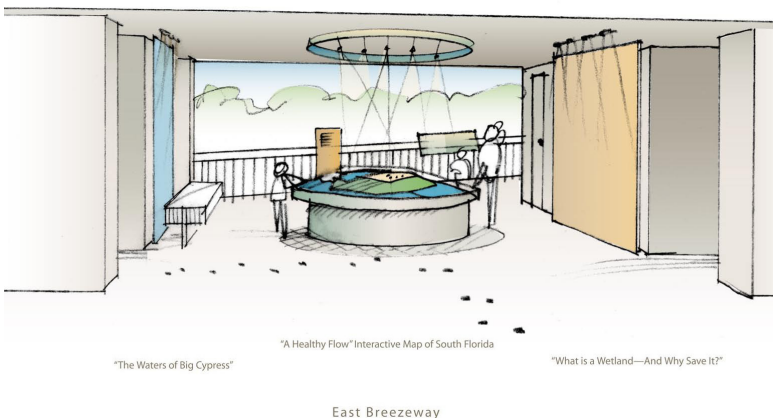
Above: Alligators & other top predators, West Breezeway.



Right: Interior of Welcome Center.

Below Left: Waters of the Big Cypress, East Breezeway.

Below Right: Locator map for Big Cypress Welcome Center.



New documentary tells the story of “The Western Everglades”

“Big Cypress Swamp: The Western Everglades” captures the heart of Big Cypress. To learn more about the film, go to www.bigcypressswamp.org



Producer and Cinematographer Elam Stoltzfus has teamed up with photographer Clyde Butcher and musician Sammy Tedder to produce a new film that takes viewers deep into the heart of the Big Cypress Swamp. The hour-long documentary began airing on public television nationwide in September. Elam, Clyde and Sammy have worked together before, notably on “Living Waters, Aquatic Preserves of Florida” and “The Apalachicola River: An American Treasure.” Their latest project features some stunning footage captured in the Big Cypress, and interviews with folks who know and love these “Western Everglades.”

DVD copies are available for purchase through the Trust, for \$20 plus \$5 for shipping and handling. All proceeds benefit the Welcome Center.



Sammy Tedder, Clyde Butcher and Elam Stoltzfus



SOUTH FLORIDA
NATIONAL PARKS TRUST

Help Support the Big Cypress Swamp Welcome Center

The South Florida National Parks Trust is seeking to raise \$250,000 in partnership with the Big Cypress National Preserve to purchase permanent exhibits for the new Big Cypress Welcome Center.

You can support this project by donating online at www.southfloridaparks.org or by completing the form below and mailing it with a check made payable to South Florida National Parks Trust to SFNPT, 1390 South Dixie Highway, Suite 2203, Coral Gables, FL 33146. All donations to the Trust are tax deductible; donations of \$1,000 or more will be recognized on the Big Cypress Donor Wall inside the new Welcome Center.

Name: _____ Amount of Donation: _____

Address: _____

Phone: _____ Email: _____

Visit our Web Site at
www.southfloridaparks.org

The Trust is a 501(c)(3) not-for-profit organization registered in the state of Florida (CH 23680). A COPY OF THE OFFICIAL REGISTRATION AND FINANCIAL INFORMATION MAY BE OBTAINED FROM THE FLORIDA DIVISION OF CONSUMER SERVICES BY CALLING TOLL-FREE (800-435-7352) WITHIN THE STATE. REGISTRATION DOES