



# Product End-of-Life Disassembly Instructions

**Product Category:** Personal Computers

**Marketing Name / Model**

[List multiple models if applicable.]

HP Compaq 6005 Pro Small Form Factor Desktop PC

Name / Model #2

Name / Model #3

Name / Model #4

Name / Model #5

**Purpose:** The document is intended for use by end-of-life recyclers or treatment facilities. It provides the basic instructions for the disassembly of HP products to remove components and materials requiring selective treatment, as defined by EU directive 2002/96/EC, Waste Electrical and Electronic Equipment (WEEE).

## 1.0 Items Requiring Selective Treatment

1.1 Items listed below are classified as requiring selective treatment.

1.2 Enter the quantity of items contained within the product which require selective treatment in the right column, as applicable.

Item Description	Notes	Quantity of items included in product
Printed Circuit Boards (PCB) or Printed Circuit Assemblies (PCA)	With a surface greater than 10 sq cm	1
Batteries	All types including standard alkaline and lithium coin or button style batteries	1
Mercury-containing components	For example, mercury in lamps, display backlights, scanner lamps, switches, batteries	0
Liquid Crystal Displays (LCD) with a surface greater than 100 sq cm	Includes background illuminated displays with gas discharge lamps	0
Cathode Ray Tubes (CRT)	-	0
Capacitors / condensers (Containing PCB/PCT)	-	0
Electrolytic Capacitors / Condensers measuring greater than 2.5 cm in diameter or height	This project have four vendors as Below: Acbel ,Chicony , Lite-on ,Delta	EPA Liteon: 13 API :9 Chicony :12 Delta:TBC nonEPA: Liteon :13 API:10 Chicony:14 Delta:TBC
External electrical cables and cords	-	0

Gas Discharge Lamps	-	0
Plastics containing Brominated Flame Retardants weighing > 25 grams (not including PCBs or PCAs already listed as a separate item above)	PSU (Acbel ,Delta , Liteon ) and System fan containing brominated flame retardants, Mother board	TBC
Components and parts containing toner and ink, including liquids, semi-liquids (gel/paste) and toner	Include the cartridges, print heads, tubes, vent chambers, and service stations.	0
Components and waste containing asbestos	-	0
Components, parts and materials containing refractory ceramic fibers	-	0
Components, parts and materials containing radioactive substances	-	0

### 1.3 Markings for plastic parts greater than 25 grams

Plastic Part Name	Plastic Part Description	Weight (grams)	ISO 11469:2000 Plastic Part Mark	Optional: Photo
Main Bezel	Main bezel of desktop product	89g	>ABS<	
Fan Duct	System fan holder of desktop product	58.7g	>PC+ABS FR(40)<	
Fan Holder	Fan holder of desktop product	44.9	>PC+ABS FR(40)<	
System Fan Frame_ADDA	System Fan Frame of desktop product	45g	>PBT-GF30 FR(17)<	
System Fan Frame_DELTA	System Fan Frame of desktop product	45g	>PBT-GF30-FR(17)<	
Chassis Stand	Chassis Stand of desktop product	78.0g	>ABS<	
DC Fan Frame_ADDA	DC Fan Frame of desktop or tower product	40g	>PBT-GF30 FR(17)<	
DC Fan Frame_DELTA	DC Fan Frame of desktop or tower product	40g	>PBT-GF30-FR(17)<	

## 2.0 Tools Required

List the type and size of the tools that would typically be used to disassemble the product to a point where components and materials requiring selective treatment can be removed.

Tool Description	Tool Size (if applicable)
Description #1 Philips Screw Driver	100mm
Description #2 Diagonal cutting pliers	130mm
Description #3 Long nose pliers	NA
Description #4 Unsolder tool	NA
Description #5 Solder machine	230mm

## 3.0 Product Disassembly Process

3.1 List the basic steps that should typically be followed to remove components and materials requiring selective treatment:

1. Remove the access panel (see figure 1-2)
2. Remove the front bezel (see figure 3-4)
3. Remove Fan duct and heatsink (see figure 5-11)
4. Remove CPU (see figure 12-13)
5. Remove Memory Module (see figure 14-15)
6. Disconnect all internal cable from PCA (see figure 16)
7. Remove ODD and rotate ODD cage (see figure 17-18)
8. Remove 1<sup>st</sup> HDD (see figure 19-20)
9. Remove PCA (see figure 22-23)
10. Remove Battery (see figure 24-25)
11. Release PSU case (see figure 26-28)
12. Remove PSU PCA and Fan (see figure 29-32)
13. Remove electrical capacitors from PCA (see figure 33)
- 14.
- 15.
- 16.

3.2 Optional Graphic. If the disassembly process is complex, insert a graphic illustration below to identify the items contained in the product that require selective treatment (with descriptions and arrows identifying locations).

**Figure 1: Pull Lock**



**Figure 2: Rise access panel Press front panel clip**



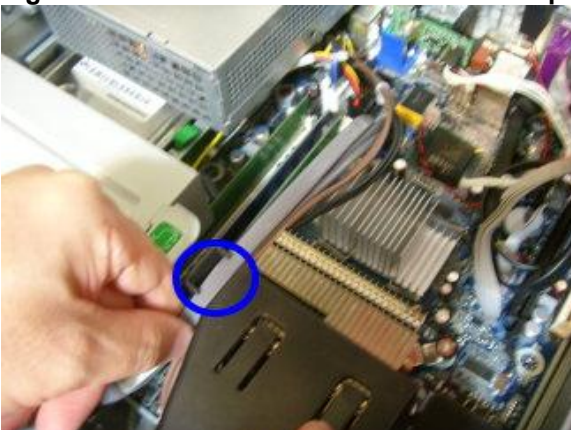
**Figure 3: Pull 3 retaining clips on the bezel top side**



**Figure 4: Release the front bezel. Rotate the bezel outward to remove it from the chassis**



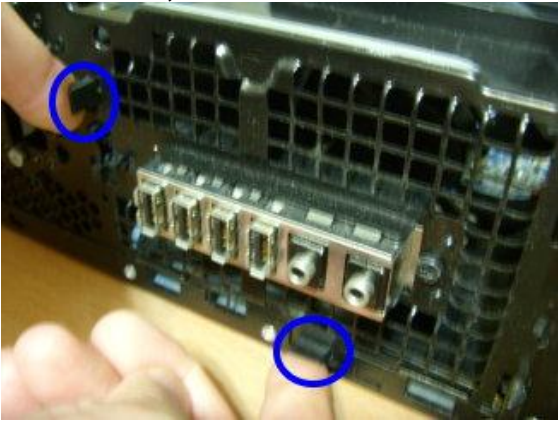
**Figure 5: Remove all cable from cable clamp**



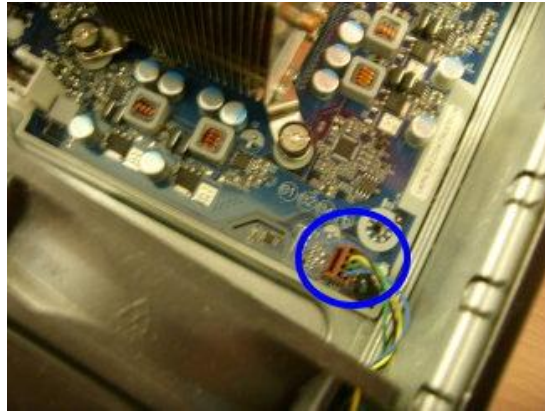
**Figure 6: Release Fan duct**



**Figure 7: Press 2 clip to Remove Fan holder from front chassis,**



**Figure 8: Disconnect Fan connector from PCA header**



**Figure 9 : Remove fan and fan holder from chassis**



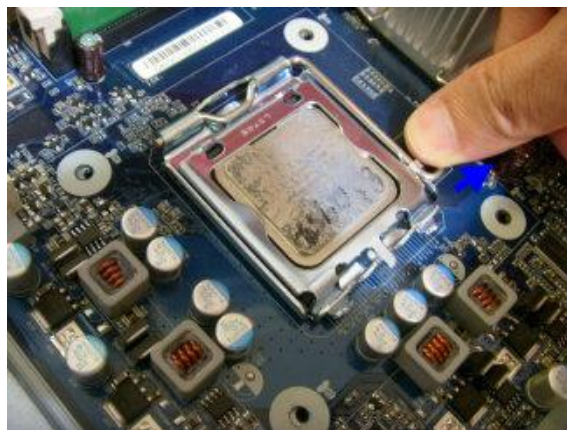
**Figure 10 : Wresting screw with screw driver release 4 qyt's screw**



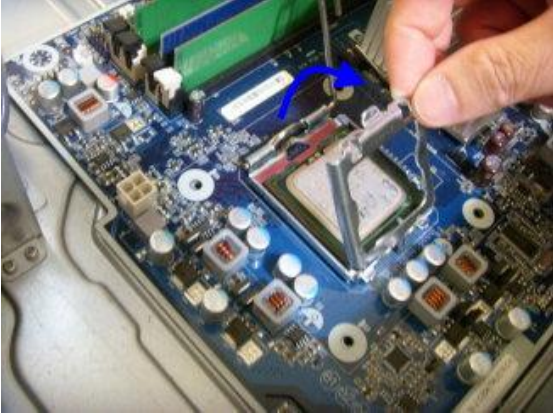
**Figure 11: Remove Heat sink from PCA**



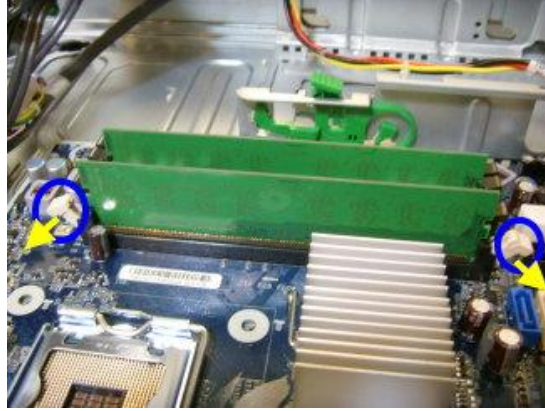
**Figure 12: Press CPU chassis lock**



**Figure 13: Remove CPU**



**Figure 14: Unlock Memory DIMM lock**



**Figure 15 :Remove Memory DIMM from PCA**



**Figure 16: Remove all internal cable from PCA**



**Figure 17: Release ODD from ODD cage  
Press ODD latch and push ODD toward PSU.**



**Figure 18: Rotate ODD cable to vertical**



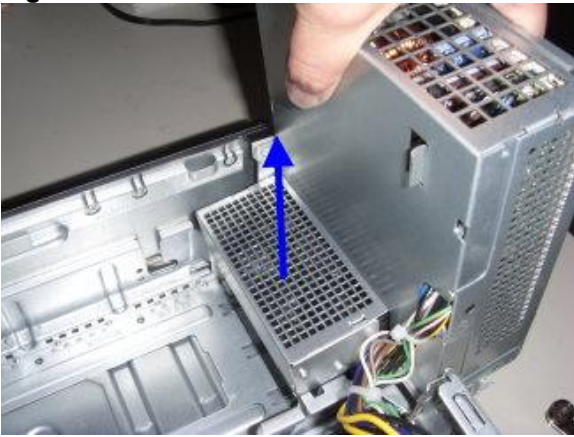
**Figure 19: Rotate PSU to Vertical**



**Figure 20: Release HDD Press HDD latch and push HDD toward Front side.**



**Figure 21: Remove PSU from Chassis**



**Figure 22: Release PCA 8 screws by wresting screw with screw driver**



**Figure 23: Remove PCA from Chassis**



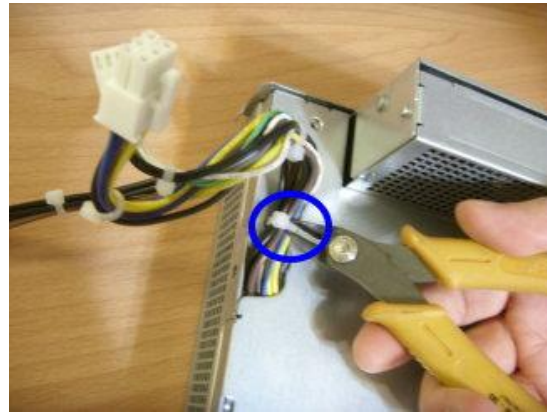
**Figure 24: Press Battery holder and Pull battery**



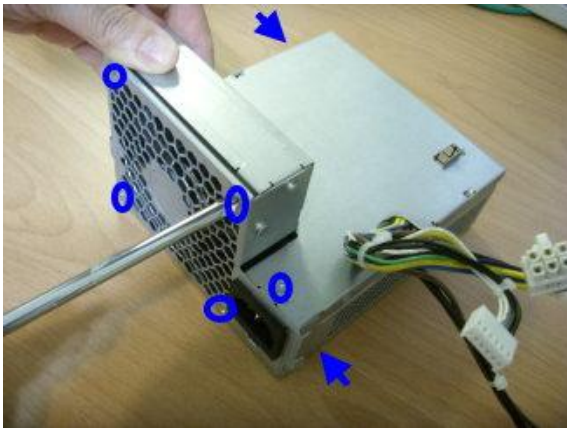
**Figure 25: Remove Battery**



**Figure 26: Cut the plastic cable tie from PSU case**



**Figure 27: Release PSU 7 screws by wrest screw driver**



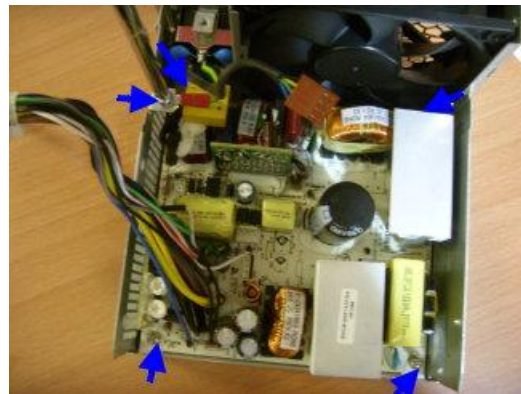
**Figure 28: Remove PSU the top of case**



**Figure 29: Cut PSU PCA wire (2) and disconnect Fan connector**



**Figure 30: Remove PSU PCS 5 screws**

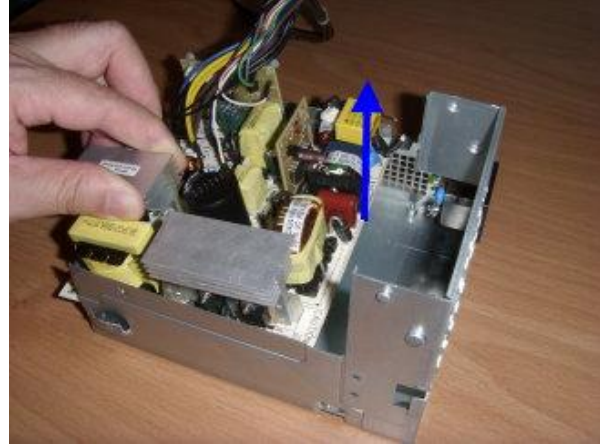




**Figure 31 : : Remove PSU FAN**



**Figure 32: Remove PSU PCA from case**



**Figure 33 Remove electrical capacitors**

