

The West River Radio Club has designed these items to be worn in public for recognition and promotion of the West River Radio Club. The shirt pricing **includes** the embroidery of the West River Radio Club logo on the left side **and** your first name and call sign on the right side. To order the West River Radio Club apparel, please fill out the order information below and follow the directions.

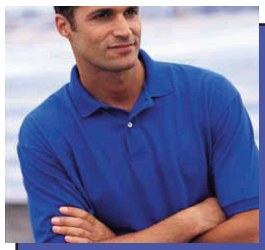
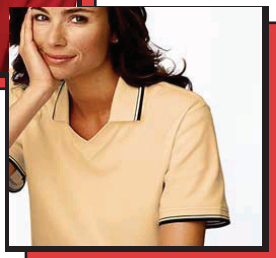
**West River Radio Club
Member Apparel Program**



The Devon and Jones Polo Shirt

The softest, best-looking, most comfortable polo ever!
100% Peruvian Pima Cotton, Dura-pearl buttons, 3-button placket, contrast color tipping on collar and cuffs, tail with split side vents.

Colors
Butter/Navy Trim, White/Navy Trim, or Stone/Navy Trim



Outerbanks 60/40 Jersey Shirt

60% cotton, 40% polyester,
5.3 oz Welt-knit collar and hemmed sleeves

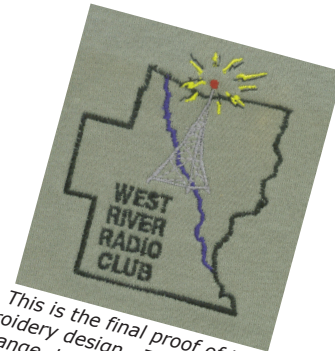
Colors
White or Chino



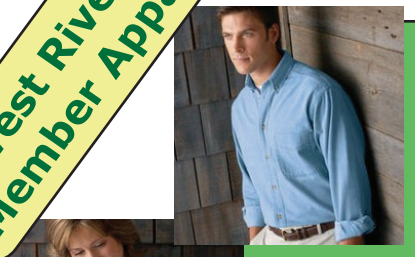
Adams Hats

LOW PROFILE SIX PANEL PIGMENT-DYED CAP
100% cotton, garment washed, tuckaway leather strap with antique brass buckle. Unconstructed front panel with mesh lining inside.

Multiple colors to choose from



This is the final proof of the embroidery design. The colors shown will change depending on the shirt color selected. (Shown on a Khaki Green/Gray and used for design purposes only)



The Harvard Square Denim long sleeve shirts

7 ounce cotton denim shirt. Standard denim cut. Double needle tailoring. Button-down collar. Seven wood-tone buttons. Left chest pocket.

Colors
Dark Blue or Light Blue



Please mail completed orders and check to:

**Darrel Daley
West River Radio Club
PO Box 445
Putney, VT 05346-0445**

Qty	Size	Men's	Ladies	Model Number Men's / Ladies	Shirt Type	Cost	Ext Cost	Color (Circle One) *	
		Check one							
				D140 / D140W	Devon and Jones Tipped Perfect Pima Polo (S-XL)	\$30.00		Butter/Navy	White/Navy Stone/Navy
				D140 / D140W	Devon and Jones Tipped Perfect Pima Polo (XXL)	\$32.00		Butter/Navy	White/Navy Stone/Navy
				D140 / D140W	Devon and Jones Tipped Perfect Pima Polo (XXXL)	\$34.00		Butter/Navy	White/Navy Stone/Navy
				2003	Outerbanks 60/40 Jersey Sport Shirt (S-XL)	\$26.00		White	Chino
				2003	Outerbanks 60/40 Jersey Sport Shirt (XXL)	\$28.40		White	Chino
				HS150/HS155	Harvard Square Denim Long Sleeve (S-XL)	\$28.50		Dark Blue	Light Blue
				HS150/HS155	Harvard Square Denim Long Sleeve (XXL)	\$30.00		Dark Blue	Light Blue
				HS150/HS155	Harvard Square Denim Long Sleeve (XXXL)	\$31.50		Dark Blue	Light Blue
				LP101	Adams Low Profile 6 Panel Hat	\$12.00		Khaki	Navy Other _____

Member Name
Call Sign

Order Total
\$

Checks should be made out to WRRC

* - The WRRC Member Apparel color selections offered were selected by the WRRC standard and looks the best with the colors incorporated within our logo. Other shirt colors are available upon special request. Our supplier will change the colors of the logo to best fit your selection. WRRC will not be responsible for the looks of any other color selections on special orders.