



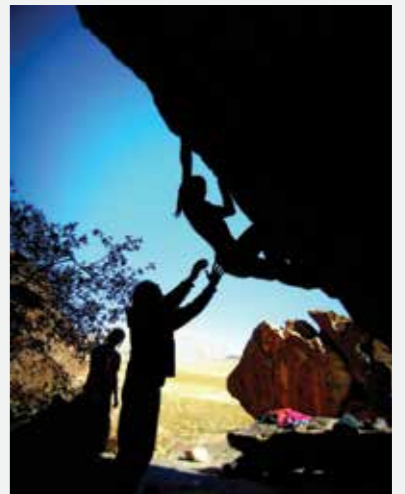
moon

2014



**CONTENTS**

- 2 - 5. MEN'S PANTS AND SHORTS
- 6 - 8. MEN'S TOPS
- 9 - 13. MEN'S LONG SLEEVES, T-SHIRTS AND VESTS
- 15 - 17. WOMEN'S PANTS AND SHORTS
- 18 - 21. WOMEN'S TOPS
  - 19. WOMEN'S LONG SLEEVE T-SHIRTS
  - 20. WOMEN'S FITTED & LOOSE FIT T-SHIRTS
  - 21. WOMEN'S VESTS
- 24. HATS
- 25. PACKS, BAGS AND ROPE BAGS
- 26. CRASH PADS
- 27. CHALK BAGS AND CHALK
- 28 - 29. TRAINING & HOLDS
- 31. SIZE GUIDE



MEN'S PANTS AND SHORTS



**NEW COLOURS**  
**CYPHER PANT**  
 black, navy, brown, dark olive, sand, green  
 XS, S, M, L, XL  
 60/40 poly/cotton  
 Loose fit mid-weight pant, elastic waist with drawstring, articulated knees, diamond crotch, wind resistant and quick drying.

MEN'S PANTS AND SHORTS



**NEW COLOURS**  
**CYPHER SHORT**  
 black, navy, brown, dark olive, purple, green  
 XS, S, M, L, XL  
 60/40 poly/cotton  
 Short version of the Cypher pant.

**NEW COLOURS**  
**CYPHER 3/4 PANT**  
 black, navy, brown, dark olive, purple, green  
 XS, S, M, L, XL  
 60/40 poly/cotton  
 3/4 length version of the Cypher pant

MEN'S PANTS AND SHORTS



**ORGANIC CYPHER PANT**

dark olive, brown  
XS, S, M, L, XL  
100% organic cotton canvas  
Cypher pant in 100% organic cotton canvas.



**ORGANIC CYPHER 3/4**

dark olive, brown  
XS, S, M, L, XL  
100% organic cotton canvas  
Cypher pant in 100% organic cotton canvas.



**NEW COLOUR  
JOKER PANT**

dark olive  
XS, S, M, L, XL  
100% organic cotton canvas  
Loose fit mid-weight pant made from tough 100% organic cotton canvas fabric. Fixed waist with belt loops, diamond crotch and articulated knees.

MEN'S PANTS AND SHORTS



**MUSHIN PANT**

black, dark olive  
XS, S, M, L, XL  
45/55 poly/cotton  
Loose fit light-weight pant, fitted waist with Velcro adjusters, diamond crotch, articulated and reinforced knees and seat.



**NEW STYLE  
LIGHT-WEIGHT SHORT**

dark olive, green  
XS, S, M, L, XL  
60/40 poly/cotton  
Lightweight short with ribbed waistband, 2 side seam pockets and single rear pocket.



**SKINK JEAN**

indigo  
XS, S, M, L, XL  
98/2 organic cotton/lycra  
Loose fit heavyweight pant, organic stretch denim, fitted waist, Moon logo metal button with belt loops, diamond crotch, double patch pockets at the rear.



**NEW STYLE**  
**PULLOVER HOODY 2014**  
 moon rock, paprika  
 XS, S, M, L, XL  
 100% cotton  
 Pullover cotton hoody with draw cord hood and Train Hard Climb Harder back graphic.



**NEW STYLE**  
**ZIPPED HOODY 2014**  
 navy, green  
 XS, S, M, L, XL  
 80/20 cotton/polyester  
 Full zip hoody with 2 front pockets, contrast called zip and chest logo graphic.



**NEW STYLE**  
**CREW NECK SWEAT**  
 navy  
 XS, S, M, L, XL  
 80/20 cotton/polyester  
 Crew neck sweat with ribbed cuff and hem, chest graphic and forearm patches.



**NEW STYLE**  
**MNS CK JACKET**  
 dark olive  
 XS, S, M, L, XL  
 cotton/poly ripstop  
 Pullover smock jacket with hood, 3/4 zip, 2 front pockets and hem and hood adjustment.



**NEW STYLE**  
**MNS WAFFLE LS**  
 grey/paprika  
 XS, S, M, L, XL  
 100% cotton  
 Long sleeve cotton tee with contrast coloured raglan sleeve and chest logo.

MEN'S TOPS



**NEW STYLE**  
**TRAIN HARD LS**  
 rabbit, paprika  
 XS, S, M, L, XL  
 100% cotton  
 Long sleeve t-shirt, two tone colour, Moon logo front chest print with Train Hard back graphic.



MENS HERITAGE T-SHIRTS



**NEW STYLE**  
**MNS MC HERITAGE TEE**  
 rabbit, fuscia, paprika marl  
 XS, S, M, L, XL  
 poly/cotton/viscose  
 Short sleeve tee shirt with chest graphic and woven sleeve logo.

**NEW STYLE**  
**CYPHER HERITAGE TEE**  
 rabbit, fuscis, grey marl  
 XS, S, M, L, XL  
 poly/cotton/viscose  
 Short sleeve tee shirt with chest graphic and woven sleeve logo.

MENS HERITAGE T-SHIRTS



NEW STYLE

**UNDERWORLD HERITAGE TEE**

rabbit, grey marl, blue atoll  
XS, S, M, L, XL  
poly/cotton/viscose  
Short sleeve tee shirt with chest graphic and woven sleeve logo.



NEW STYLE

**ROCK TOUR HERITAGE TEE**

blue atoll, paprika marl, grey marl  
XS, S, M, L, XL  
poly/cotton/viscose  
Short sleeve tee shirt with chest and back graphic and woven sleeve logo.

MENS ORGANIC COTTON T-SHIRT



NEW COLOURS

**BUS STOP CLIMBER TEE**

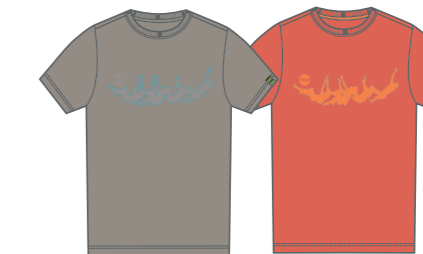
rabbit, blue atoll, paprika  
XS, S, M, L, XL  
100% organic cotton  
Short sleeve tee shirt with chest graphic and woven sleeve logo.



NEW COLOURS

**MOON SPOTTER TEE**

rabbit, paprika, moon rock  
XS, S, M, L, XL  
100% organic cotton  
Short sleeve tee shirt with chest graphic and woven sleeve logo.



NEW COLOURS

**BOULDERING GRAPHIC TEE**

moon rock, paprika, blue atoll  
XS, S, M, L, XL  
100% organic cotton  
Short sleeve tee shirt with chest graphic and woven sleeve logo.

MENS TECH T-SHIRTS



NEW STYLE  
ROPE LOGO TEE

navy, paprika  
XS, S, M, L, XL  
67% bamboo, 28% organic cotton, 5% elastane  
Short sleeve tee shirt with chest graphic and woven sleeve logo.

NEW STYLE  
TRAIN HARD TEE

navy, paprika  
XS, S, M, L, XL  
67% bamboo, 28% organic cotton, 5% elastane  
Short sleeve tee shirt with back graphic and woven sleeve logo.

MENS VESTS



NEW STYLE  
ROPE LOGO VEST

rabbit, oil green, paprika  
XS, S, M, L, XL  
100% organic cotton  
100% organic cotton vest with chest graphic.

NEW STYLE  
TRAIN HARD VEST

rabbit, oil green, paprika  
XS, S, M, L, XL  
100% organic cotton  
100% organic cotton vest with chest logo and rear graphic.





WOMEN'S PANTS AND SHORTS



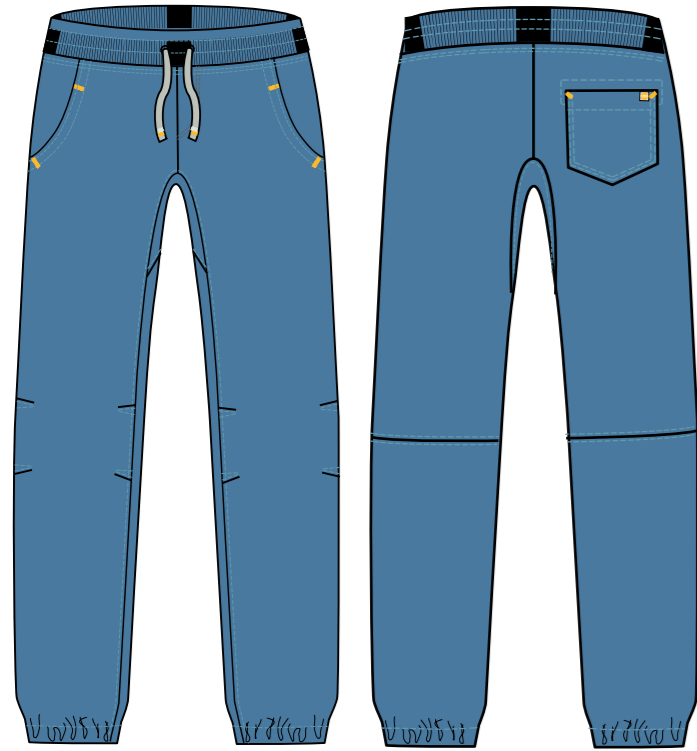
**NEW COLOURS**  
**ANDROMEDA PANT**

black, sand  
XS, S, M, L, XL  
60/40 poly/cotton  
Loose fit, mid-weight pant, fixed waist with drawcord,  
articulated knees, diamond gusset, front and back pockets,  
zipped thigh pocket, leg hem adjustment.

**NEW STYLE**  
**ANDROMEDA SHORT**

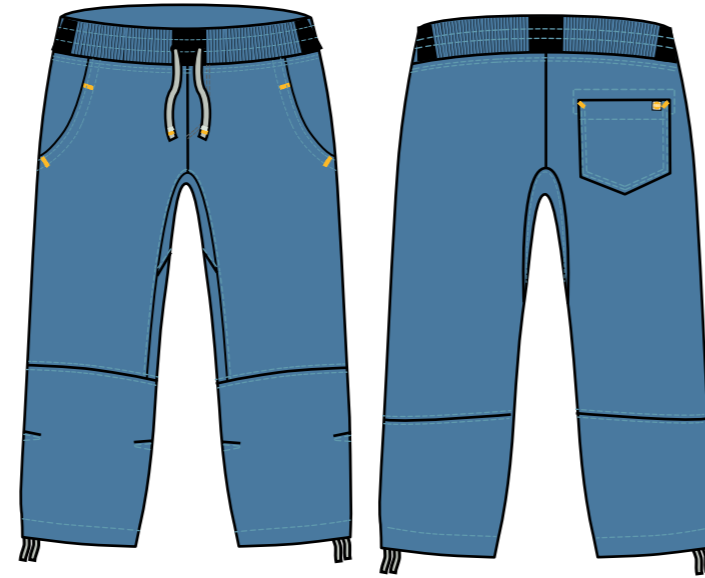
sand  
XS, S, M, L, XL  
60/40 poly/cotton  
Andromeda pant cut to just above the knee.

WOMEN'S PANTS AND SHORTS



**NEW STYLE**  
**LIGHT-WEIGHT DENIM PANT**

indigo  
XS, S, M, L, XL  
100% organic cotton  
Light-weight denim pant, ribbed waistband with drawcord and ribbed leg hem, 2 side pockets and single rear pocket.



**NEW STYLE**  
**DENIM CAPRI**

indigo  
XS, S, M, L, XL  
100% organic cotton  
Light-weight denim capri, ribbed waistband with drawcord, front pockets.

WOMEN'S PANTS AND SHORTS



**FARADAY JEAN**

indigo  
XS, S, M, L, XL  
98/2 organic cotton/lycra  
Stretch denim, slim fit, fixed waist with belt loops, front and back pockets, articulated knees, diamond gusset.



**AQUILA PANT**

black  
XS, S, M, L, XL  
95/5 cotton/spandex french terry  
Stretch cotton sweat pant, ribbed waist band with drawcord, leg adjustment.



**NEW STYLE**  
**AQUILA CAPRI**

black  
XS, S, M, L, XL  
95/5 cotton/spandex french terry  
Capri length version of the Aquila Pant.

WOMEN'S TOPS



**NEW COLOURS**  
**WMS LIGHTWEIGHT HOODY**  
 paprika, moon rock  
 XS, S, M, L, XL  
 95/5 cotton/spandex french terry  
 Light-weight pullover hoody, kangaroo pocket, thumb holes, drop back.



**NEW COLOURS**  
**WMS FULL ZIP HOODY**  
 navy, green  
 XS, S, M, L, XL  
 80/20 cotton/polyester  
 Mid-weight hoody, full zip kangaroo pocket with extra zipped pocket, ribbed cuffs and hem.

WOMEN'S TOPS



**NEW STYLE**  
**WMS WAFFLE L/S**  
 paprika  
 XS, S, M, L, XL  
 100% cotton  
 Long-sleeved cotton tee with scooped neck line, front patch pocket and contrast coloured ribbed cuffs.



**NEW STYLE**  
**WMS CK JACKET**  
 dark olive  
 XS, S, M, L, XL  
 cotton/poly ripstop  
 Pullover smock jacket with hood, 3/4 zip, 2 front pockets and hem and hood adjustment.

WOMEN'S BAMBOO/COTTON T-SHIRTS



**NEW STYLE**  
**AZTEC MOON LOGO TEE**  
 navy  
 XS, S, M, L, XL  
 67% bamboo, 28% organic cotton, 5% elastane  
 Short sleeve tee shirt with chest graphic and woven sleeve logo.

**NEW STYLE**  
**WMS MC HERITAGE TEE**  
 paprika  
 XS, S, M, L, XL  
 67% bamboo, 28% organic cotton, 5% elastane  
 Short sleeve tee shirt with chest graphic and woven sleeve logo.

WOMEN'S FITTED T-SHIRTS AND VESTS



**NEW COLOURS**  
**WMS BUS STOP CLIMBER**  
moon rock, fucsia  
XS, S, M, L, XL  
cotton/lycra  
Fitted t-shirt, Bus Stop Climber print on front.



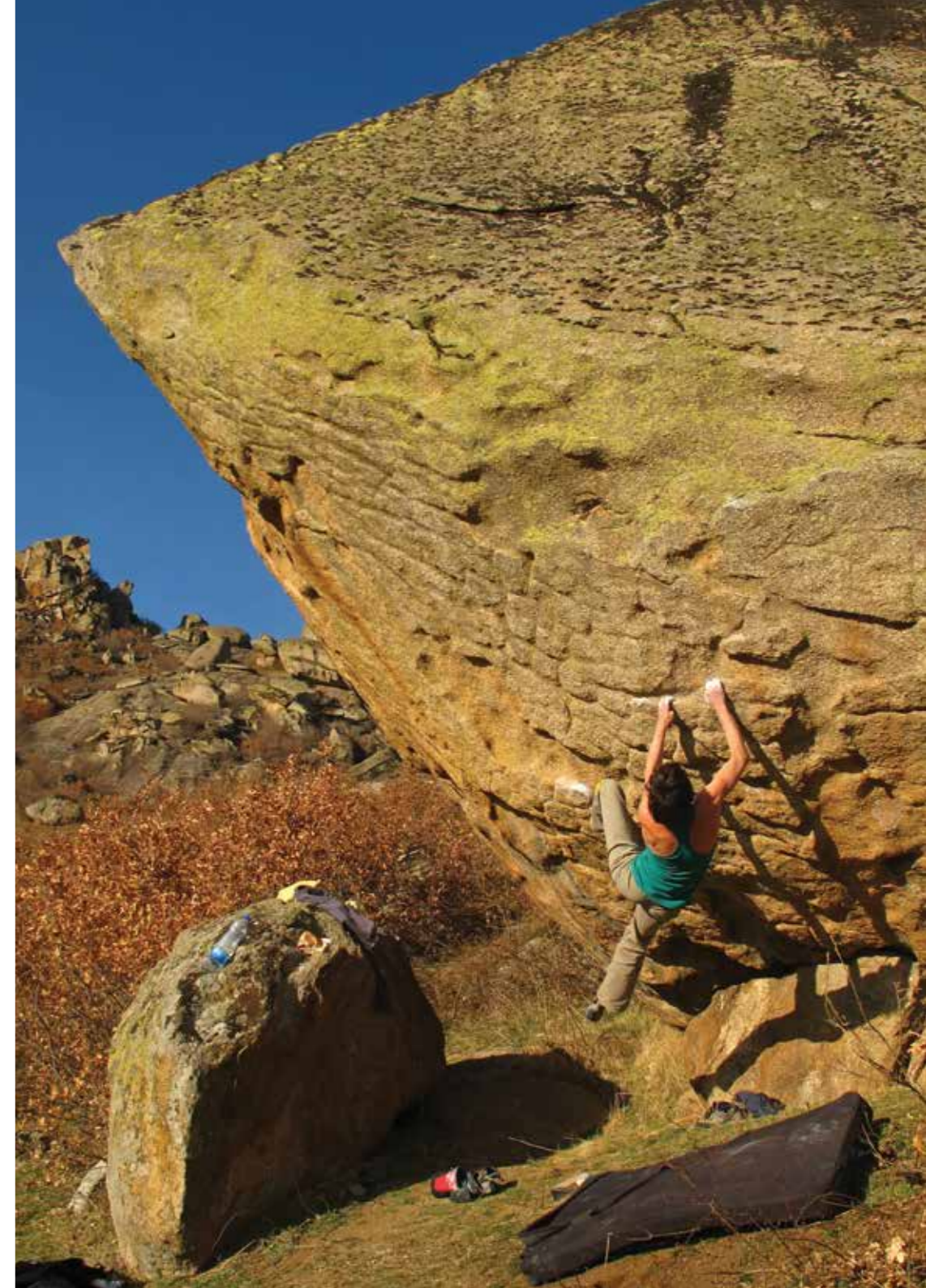
**NEW COLOURS**  
**RACER VEST**  
moon rock planet print, blue atoll  
XS, S, M, L, XL  
cotton/lycra  
Stretch cotton/lycra vest with racer style back and built in bra.



**NEW STYLE**  
**PLACKET VEST**  
blue atoll marl  
XS, S, M, L, XL



**NEW**  
**LUNA VEST**  
fucsia, blue atoll  
XS, S, M, L, XL  
cotton/lycra  
Stretch cotton/lycra vest with racer style back and built in bra.





HATS



**EAR FLAP STYLE 33134**  
brown/grey  
one size  
100% acrylic



**STRIPED 32304**  
green/white  
one size  
50/50 merino wool/acrylic



**FLEECE STYLE 32325**  
purple  
one size  
100% acrylic



**MOON PATTERN 32397**  
black  
one size  
100% acrylic



**MOON LOGO 33149**  
black/red  
one size  
50/50 merino wool/acrylic



**DUAL HAT**  
black, olive  
one size  
100% acrylic

**PACKS, BAGS AND ROPE BAGS**



**MOON BOULDERING BAG**

black, red/black, grey/black, purple/black  
one size  
1000D nylon with PU coating  
20L Bouldering bag with shoulder strap or backpack carrying system.



**AERIAL PACK**

black, red/black, camo/black  
one size, 1.2 kg or 2 lb 6 oz, 38 L or 2319 cu in  
1000D nylon with PU coating  
38L capacity, moulded foam back panel with internal aluminium stay, removable hip belt, roll down closure system with central YKK splashguard zip, removable rope bag tarp.

**VOYAGER ROPE BAG**

grey/black, red/black, camo/black  
one size  
1000D nylon with PU coating  
Rope bag with double zip opening, shoulder strap or backpack carrying system, 2 grab handles, removable tarp.

**VERT PACK**

black, red/black, purple/black  
one size  
1000D nylon and N420D ripstop  
25L capacity, moulded foam back panel, removable hip belt, chest harness, tension straps, separate laptop case pocket, front pocket with internal zip pocket.

**CLASSIC ROPE BAG**

black  
one size  
420D nylon  
Classic style rope bag with grab handles.

**CRASH PADS**



**MOON BUCKLE**

red  
one size  
aluminium



**BUMP START**

grey/black, red/black, camo/black  
90 x 60 x 4 cm (36 x 24 x 1.5 in)  
1000D nylon with PU coating  
Launch pad with 2 x grab handles, mitred corners and carpet footmat.  
1 kg (3 lbs)

**PLUTO**

grey/black, red/black, purple/black  
100 x 80 x 8 cm (40 x 32 x 3 in)  
1000D nylon with PU coating  
Reverse fold taco style, closed and open cell foam, shoulder strap, grab handle, mitred corners, aluminium buckles.  
3 kg (7lbs)

**WARRIOR**

grey/black, red/black, purple/black  
130 x 100 x 10 cm (51 x 40 x 4 in)  
1000D nylon with PU coating  
Reverse fold taco style, backpack carrying system, closed and open cell foam, grab handle, 3 x aluminium buckles, mitred corners, carpet footmat.  
5 kg (11 lbs)

**SATURN**

grey/black, red/black, purple/black  
160 x 120 x 11 cm (63 x 48 x 4.5 in)  
1000D nylon with PU coating  
Reverse fold taco style, backpack carrying system, closed and open cell foam, grab handle, 3 x aluminium buckles, mitred corners, carpet footmat.  
7 kg (15 lbs)

**CHALK BAGS AND CHALK**



**MOON DUST 300G CLIMBING CHALK**  
300g (10 oz) 100% pure magnesium, no additives.



**SPORT CHALK BAG**  
assorted  
one size  
1000D nylon  
Lightweight chalk bag, fixed cord lock opening, belt included.



**TRAD CHALK BAG**  
assorted  
one size  
1000D nylon  
Standard weight chalk bag, fixed cord lock opening, belt included.



**BOULDERING CHALK BAG**  
assorted  
one size  
1000D nylon  
Large capacity, dry-bag closure with Velcro and buckle, stash pocket.



**DELUXE BOULDERING CHALK BUCKET**  
assorted  
one size  
1000D nylon  
Extra large capacity, padded base for stability, mesh pocket, zip pocket, 2 grab handles, fixed cord lock opening.

**TRAINING**



**MOON FINGERBOARD**  
White, black, stone, green / 70 x 14 x 4 (27 x 5 x 1.5 in)  
"Voted "Editors Choice" in US magazine Climbing, aimed at intermediate to advanced climbers".



**PHAT BOY FINGERBOARD**  
White, black, stone, green / 70 x 14 x 4 (27 x 5 x 1.5 in)  
Ability level: All abilities

**TRAINING**



**ORIGINAL SCHOOL HOLDS**  
Yellow, 40 bolt-on-holds and 10 foot-holds, fixings not included.



**SCHOOL HOLDS TRAINING SET A**  
White, 50 bolt-on-holds, fixings not included.



**SCHOOL HOLDS TRAINING SET B**  
Black, 50 bolt-on-holds, fixings not included.



**MOONBOARD FOOTHOLDS**  
Assorted, 10 bolt on hold footholds, fixings not included.



**POWER GRIPS SET A**  
Assorted, 68 screw-on holds with fixings.



**POWER GRIPS SET B**  
Assorted, 68 screw-on holds with fixings.

**MOON CLOTHING SIZE GUIDE**

<b>MEN'S PANTS</b>	<b>XS</b>	<b>S</b>	<b>M</b>	<b>L</b>	<b>XL</b>
WAIST	28in (71cm)	30in (76cm)	32in (81cm)	34in (86cm)	36in (91cm)
INSEAM	30in (76cm)	32in (81cm)	32in (81cm)	34in (86cm)	34in (86cm)
<b>MEN'S TOPS</b>	<b>XS</b>	<b>S</b>	<b>M</b>	<b>L</b>	<b>XL</b>
CHEST	32in (81cm)	34in (86cm)	36in (91cm)	38in (96cm)	40in (101cm)
<b>WOMENS</b>	<b>XS</b>	<b>S</b>	<b>M</b>	<b>L</b>	<b>XL</b>
UK	8	10	12	14	16
EUROPEAN	36	38	40	42	44
US	4	6	8	10	12
BUST	81cm (32in)	86 (34in)	91cm (36in)	96cm (38in)	101cm (40in)
WAIST	63cm (25in)	68cm (27in)	73cm (29in)	78cm (31in)	83cm (33in)



MOON CLIMBING  
28 CROSS SMITHFIELD  
SHEFFIELD  
S3 7AU

TEL/FAX: +44 114 249 1821  
BEN@MOONCLIMBING.COM  
WWW.MOONCLIMBING.COM

