

The Essential Guide to Chefs Wear and Front of House Clothing

featuring



**Chef Works**<sup>®</sup>

Passionate About Chefs

June 2009

# TRADITIONAL CHEF COATS



## ESSEX CHEF COAT

Item **SXCC-LS**

Poly-Cotton, Press Stud Closures, Long Sleeves  
Available in sizes **XS - XXXL**



## ESSEX CHEF COAT

Item **SXCC-SS**

Poly-Cotton, Press Stud Closures, Short Sleeves  
Available in sizes **XS - XXXL**

### Coat Size Chart

Sizes:	To Fit Chest:
XS	32-34
S	36-38
M	40-42
L	44-46
XL	48-50
XXL	52-54
XXXL	56-58
XXXXL	60-62

Up Size Charges  
(per coat)  
sizes:  
XXXL 10%  
XXXXL 20%



## BLACK CHEF COAT

Item **SXCC-BKLS**

Black, Poly-Cotton, Press Stud Closures, Long Sleeves  
Available in sizes **XS - XXL**



## BLACK CHEF COAT

Item **SXCC-BKSS**

Black, Poly-Cotton, Press Stud Closures, Short Sleeves  
Available in sizes **XS - XXL**



## BORDEAUX CHEF COAT

Item **PKWC**

Poly-Cotton, Cloth Knot Buttons, Left Breast Pocket,  
Turned Back Cuff. Thermometer pocket.  
Available in Sizes: **XS-XXXXL**

# TRADITIONAL CHEF COATS



## LE MANS CHEF COAT

Item **WCCW**

Poly-Cotton, Plastic Buttons, Left Breast Pocket, Turned Back Cuff, Thermometer Pocket.

Available in Sizes: **XS - XXXXL**

Coat  
Size Chart

Sizes:	To Fit Chest:
XS	32-34
S	36-38
M	40-42
L	44-46
XL	48-50
XXL	52-54
XXXL	56-58
XXXXL	60-62

Up Size Charges  
(per coat & shirt)  
sizes:  
XXXL 10%  
XXXXL 20%



## VOLNAY CHEF COAT

Item **PCSS**

Short Sleeves, Poly-Cotton Blend, Plastic Buttons, Left Breast Pocket, Thermometer Pocket.

Available in Sizes: **XS - XXXXL**



## Spare Stud Buttons

Available

Packs of 12.

- Black - SBBK**
- White - SBWH**
- Red - SBRE**
- Royal - SBRO**
- Bottle - SBBO**

Other colours available on request



## LONDON CHEF COAT

Item **LCLS**

Poly-Cotton Blend, Black Stud buttons (included)

Turned Back Cuff, Available in Sizes: **XS - XXXXL**

Up Size Charges  
(per coat & shirt)  
sizes:  
XXXL 10%  
XXXXL 20%



## LONDON CHEF COAT

Item **LCSS**

Poly-Cotton Blend, Black Stud buttons (included)

Available in Sizes: **XS - XXXXL**

Up Size Charges  
(per coat)  
sizes:  
XXXL 10%  
XXXXL 20%





## COLMAR CHEF COAT



Item **CBCC**

100% Cotton, Cloth Knot Buttons, Left Breast Pocket, Turned Back Cuff, Thermometer Pocket

Available in Sizes: **XS - XXXXL**

COOL FLOW REVOLUTIONARY JACKET DESIGN

**COOL**  **FLOW** 

**COOL**  **FLOW** fabric technology works in two ways to keep you cooler and drier than conventional jackets. The cellular back panel allows cool air to filter in, while allowing moisture to wick away from the skin. **COOL**  **FLOW** fabric is washable and durable. A breath of fresh air.



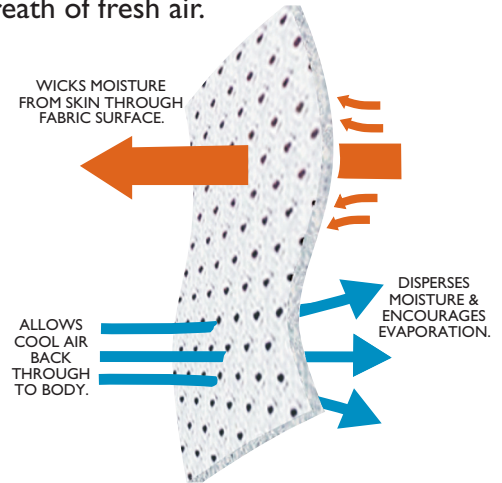
**COOL FLOW SHORT SLEEVE CHEF COAT**

**Item CFSS**  
Poly-Cotton Blend with Cool Flow back inlay, Black Stud Buttons (included)  
Sizes Available **XS - XXXL**.



**COOL FLOW LONG SLEEVE CHEF COAT**

**Item CFLS**  
Poly-Cotton Blend with Cool Flow back inlay, Black Stud Buttons (included)  
Turned back Cuff, Sizes Available **XS - XXXL**.



**Coat Size Chart**

Sizes:	To Fit Chest:
XS	32-34
S	36-38
M	40-42
L	44-46
XL	48-50
XXL	52-54
XXXL	56-58

Up Size Charges (per coat & shirt) sizes: XXXL 10%

CUSTOM EMBROIDERY

**TEXT** 4 Font Styles to choose from

CHRISTOPHER LEE  
C.E.C.

Style 1: Plain Block

*The Conner Pub*  
*Bud McConnaughey*

Style 2: Athletic Script

East Side Brewery  
Brandy Russell

Style 3: Century CP

The Country Inn  
Sous Chef  
Lauren Gross

Style 4: Block Spanish

**FLAGS** Additional Flags Available



UK



ITALY



GERMANY



ENGLAND



IRELAND



SWITZERLAND



USA



FRANCE



SCOTLAND



WALES



EU

**PERSONALISED**

Your logo may be embroidered on any garment. A one-time set-up fee is applicable. Your logo will remain on file and there will be no additional set-up costs for future logo embroidery. Please fax or mail a clear copy of your logo to us, along with the designated colours. Cost and production time may vary depending on the complexity of your logo. If you have any questions, please call our Sales Department where a representative will be happy to assist you.



SCREENPRINTING AND TRANSFER PRINTING

For those special events or corporate and club image and identity, we now offer screen printing and transfer printing on clothing, shirts, aprons and headwear. Minimum quantity of 24 required per design, with costs based on size and complexity of artwork, number of colours, and quantity. Please call our Sales Team for further information and assistance.

# KITCHEN COOK SHIRTS



## BLACK CONTRASTING COOK SHIRT

### Item BCCS

65% Polyester / 35% Cotton, Black Collar and Band, Short Sleeve, White pearl buttons.

Available in Sizes: **S-XXXXL**



## WHITE COOK SHIRT

### Item SHYK

65% Polyester / 35% Cotton, Short Sleeve, Press stud closures.

Available in Sizes: **S-XXXXL**



## BLACK COOK SHIRT

### Item KCBL

65% Polyester / 35% Cotton, Short Sleeve, Press stud closures.

Available in Sizes: **S-XXXXL**



## BLACK & WHITE CHECK COOK SHIRT

### Item SCCS

65% Polyester / 35% Cotton, Short Sleeve, White pearl buttons.

Available in Sizes: **S - XXXXL**

### Shirt Size Chart

Sizes:	To Fit Chest:
S	40
M	42
L	44
XL	46
XXL	48
XXXL	50
XXXXL	52

Up Size Charges  
(per coat & shirt)

sizes:

XXXL	10%
XXXXL	20%

# FOOTWEAR



**ITEM FSOB**  
Black Slip-On



**ITEM FLUB**  
Black Lace Up

- MACHINE WASHABLE.
- Unisex **sizes 36-47**.
- Ultra lightweight.
- Cotton fibre lined.
- 4 times more breathable than leather.
- 200 joule plastic coated protective Toe Cap.
- Highly liquid repellent uppers, resistant to blood, fats and oils.



**FLEXI-STEP CLOGS**  
**ITEM FCOB**  
Black

- Fully flexible polyurethane soles (no wood) giving superb shock absorption.
- Quality water repellent leather uppers.
- Available in continental **sizes 36-47**



**KITCHEN PRO CLOGS**  
**ITEM FCSB**  
Black

- Extra padded leather uppers.
- Strong buckles and double rivets on backstrap.
- Double layered sole with absorbent wood layer, contoured to the foot.
- Slip resistant polyurethane lower sole.
- Available in continental **sizes 35-47**



CONTINENTAL SIZES												
36	37	38	39	40	41	42	43	44	45	46	47	
3-3 1/2	4-4 1/2	5	5 1/2	6-6 1/2	7	7 1/2-8	8 1/2-9	9 1/2-10	10 1/2	11-11 1/2	12	
EQUIVALENT BRITISH SIZE												

# EGYPTIAN COTTON COLLECTION

## Egyptian Cotton - Unbeatable luxury.

In ancient times, the Pharaohs of Egypt draped themselves in a luxurious, silk-like cotton fabric that became the envy of the world. Still unsurpassed for its qualities of breathability, strength, and lightweight softness against the skin, our chefs jackets are crafted from the unbeatable luxury of pure Egyptian cotton.



### EGYPTIAN COTTON WITH WHITE REMOVABLE STUD BUTTONS

#### Item PECHR

100% Egyptian Cotton, French Cuffs, White Stud Buttons (included), Front Inset Pocket, Thermometer Sleeve Pocket. Underarm Vents. Spare set of black stud buttons also included.

Available in Sizes: **XS - XXXL**

Up Size Charges  
(per coat & shirt)  
sizes:  
XXXL 10%



Spare Set of black stud buttons included with this Special Offer. For additional spare stud buttons or other colours, see page 3.

#### Coat Size Chart

Sizes:	To Fit Chest:
XS	32-34
S	36-38
M	40-42
L	44-46
XL	48-50
XXL	52-54
XXXL	56-58



### EGYPTIAN COTTON WITH BLACK PIPING

#### Item ECCB

100% Egyptian Cotton, French Cuffs, White Hand Rolled Buttons, Front Inset Pocket, Thermometer Pocket, Under Arm Vents

Available In Sizes: **34-56**



Under Arm Vents



Hand Rolled Buttons

Up Size Charges  
(per coat)

sizes:	
50-52	10%
54-56	20%

All sizes are quoted to fit chests measuring stated size.  
Sizes are in 2 inch increments.



### EGYPTIAN COTTON WITH WHITE HAND ROLLED BUTTONS

#### Item ECHR

100% Egyptian Cotton, French Cuffs, White Hand Rolled Buttons Front Inset Pocket, Thermometer Pocket, Under Arm Vents

Available In Sizes: **34-56**

# WOMEN'S CHEF CLOTHING



## WOMEN'S CHEF BAGGIES

Item **WBLK**

100% cotton, black only. With 1-1/2" elasticised waist and drawstring. More generous hip and narrower waist provide a more flattering fit. Two side-seam pockets, two back pockets with flaps.

Available In Sizes: **XS - XXXL**

WOMEN'S BAGGY SIZE CHART

Size	XS	S	M	L	XL	2XL	3XL
Hip	34-35	36-37	38-39	40-41	42-43	44-45	46-47
Inseam	32	32	32	33	33	33	33



Up Size Charges  
(per coat/baggy)  
sizes:  
XXXL 10%

- cotton candy **SS51-CC Cotton Candy**
- black **SS51-BK Black**
- white **SS51-WH White**



cloth-covered buttons



## SANTIAGO EXECUTIVE WOMEN'S CHEF COAT

Item **SS51**

Soft poly-cotton fabric, slanted pockets, ties in back, cloth covered buttons, front and back seams, thermometer pocket and turned back cuffs. Available In Sizes:

**XS - XXXL**

Coat Size Chart

Sizes:	To fit Bust: (As measured around fullest part)
XS	32-34
S	36-38
M	40-42
L	44-46
XL	48-50
XXL	52-54
XXXL	56-58



COOL VENT EXECUTIVE COLLECTION



**TOURS COOL VENT™ EXECUTIVE CHEF COAT**

**Item PCDF**

**Item PCDF-SS**

Cool Vent™ fabric technology is like a breath of fresh air. Cut in a classic single-breasted style, this two-way technology keeps you cool by wicking heat and moisture away from the body, allowing cool air to filter back in. Cool Vent™ fabric is washable and highly durable. Exquisite twin-needle and white-piping detail, crossover styling with hidden snap buttons, thermometer pocket. Poly-cotton with Cool Vent™ inlay.

**Item PCDF**

**Item PCDF-SS**



Available In Sizes: **XS to XXXL**

Up Size Charges  
(per coat)  
sizes:  
3XL 10%

Available In Sizes: **XS to XXL**

- Cool Vent™ fabric technology promotes air circulation by allowing cool air to enter through small vents



**NEWYORK COOL VENT™ EXECUTIVE CHEF COAT**

**Item BLDF**

**Item BLDF-SS**

Classic, single-breasted style, this two-way technology keeps you cool by wicking heat and moisture away from the body, allowing cool air to filter back in. Twin-needle piping detail, crossover styling with hidden snap buttons and thermometer pocket. Poly-cotton with Cool Vent™ inlay.

Both Available In Sizes: **XS-XXL**

**Item BLDF**

**Item BLDF-SS**





# EXECUTIVE COLLECTION



## BLACK EXECUTIVE SHORT SLEEVE COAT

### Item BLCS

Poly-Cotton, Thermometer Pocket, Black Stud Buttons, Left Breast Pocket. Available in sizes: **XS to XXXL.**

Up Size Charges  
(per coat )  
sizes:  
XXXL 10%

Coat Size Chart	
Sizes:	To Fit Chest:
XS	32-34
S	36-38
M	40-42
L	44-46
XL	48-50
XXL	52-54
XXXL	56-58



## MONACO EXECUTIVE BLACK CHEF COAT

### Item BLCC

Poly-Cotton, Top Stitched Back Yoke, Double Needle Stitching, Drop Shoulders, French Cuffs, Black Stud Buttons, Thermometer Pocket, Inset Pocket. Available In Sizes: **34-56**



## PARIS EXECUTIVE CHEF COAT

### Item CCBC

100% Cotton, Black French Cuffs and Collar, Thermometer Pocket, Black Stud Buttons, Left Breast Pocket, Under Arm Vents  
Available In Sizes: **34-56**

Up Size Charges  
(per coat)  
sizes:  
50-52 10%  
54-56 20%

All sizes are quoted to fit chests measuring stated size.  
Sizes are in 2 inch increments.



## PISA EXECUTIVE CHEF COAT

### Item MACG

A modern classic. This poly-cotton, double-breasted chef coat features black piping on collar and cuffs, thermometer pocket and black plastic pearl buttons  
Available In Sizes: **XS- XXL**

# EXECUTIVE COLLECTION



Black Stud Button included. Other colours available see page 3



## CHAUMONT EXECUTIVE CHEF COAT SHORT SLEEVE

Item **BSPS**

Polyester/Cotton, Thermometer Pocket, Black Stud Buttons, Left Breast Pocket.

Available In Sizes: **XS - XXL**

## CHAUMONT EXECUTIVE CHEF COAT

Item **BSPC**

Polyester/Cotton, Thermometer Pocket, Black Stud Buttons, Left Breast Pocket,

Under Arm Vents. Available In Sizes: **XS - XXL**

## METZ EXECUTIVE CHEF COAT

Item **MECC**

No need to roll up your sleeves. Black stud buttons, collar band, and handsome shoulder paneling. Easy-wearing poly-cotton with 3/4- length sleeves and thermometer pocket. Available In Sizes: **XS - XXXL**



Up Size Charges (per coat)

sizes:	
XXXL	10%
XXXXL	20%

### Coat Size Chart

Sizes:	To Fit Chest:
XS	32-34
S	36-38
M	40-42
L	44-46
XL	48-50
XXL	52-54
XXXL	56-58



## MARSEILLE DENIM CHEF COAT

Item **CCDM**

100% Cotton, French Cuffs, Thermometer Pocket, Durable Covered Buttons, Left Breast Pocket, Under Arm Vents Available In Sizes: **34-56**

## HENRI EXECUTIVE CHEF COAT

Item **CCHR**

100% Cotton, French Cuffs, Hand Rolled Buttons, Thermometer Pocket, Inset Pocket, Under Arm Vents Available In Sizes: **34-56**

# SUSHI COATS



Item SUWH and SUBK available in sizes **XS to XXXL**



**BLACK**  
Item **SUBK**



**WHITE**  
Item **SUWH**



Up Size Charges  
(per coat)  
sizes:  
XXXL 10%

Sushi Coat Size Chart

Sizes:	To Fit Chest:	Sizes:	To Fit Chest:
XS	32-34	XL	48-50
S	36-38	XXL	52-54
M	40-42	XXXL	56-58
L	44-46		

**BLACK & WHITE  
SUSHI COAT**  
Cotton blend, cross over  
coat with self ties.

# SERVER COATS



**BLACK**  
Item **WCCBK**



**WHITE**  
Item **WCCWH**



Up Size Charges  
(per coat)  
sizes:  
XXXL 10%



**black cloth  
knot button**

Waiter Coat Size Chart

Sizes:	To Fit Chest:
XS	32-34
S	36-38
M	40-42
L	44-46
XL	48-50
XXL	52-54
XXXL	56-58

**BLACK & WHITE WAITER  
CHEF COAT**  
Cotton blend, 6 pearl buttons,  
military collar & two base pockets.  
Available in black and white.  
Sizes available in **XS - XXXL**

**SHORT SLEEVE  
SERVER COAT**  
Item **WWFJ**

Poly Cotton, Single breasted, One breast  
Pocket, Black cloth knot buttons. Sizes  
available in **XS - XXXL**

Server Coat  
Size Chart

Sizes:	To Fit Chest:
XS	36-38
S	40-42
M	44-46
L	48-50
XL	52-54
XXL	56-58
XXXL	60-62

# KIDS GET COOKIN'!



A delight for children of all ages. Our collection of chef clothing for children has all the traditional features of our professional line. Easy care poly-cotton fabrics make even the clean-up a good time.

**KIDS CHEF HAT**  
ITEM # **CWBH-WH**  
One Size

**KIDS CHEF COAT**  
ITEM # **CWB-J**  
Poly-cotton, Pearl Buttons, Turned  
back cuffs  
Available in sizes: **XS-M**

**KIDS CHEF BAGGY**  
ITEM # **CWBP-BWC**  
Black & White Check, Poly-cotton, two front  
pockets, one back pocket and elasticated  
waist with drawstring.  
Available in sizes: **XS-M**

## CHILDREN'S APRONS AVAILABLE

Coat Sizes

Size	Age	Height	Weight
XS	3-5	38"-44"	34-44 lbs
S	6-7	44"-50"	44-56 lbs
M	8-10	50"-53"	56-63 lbs

Trouser Sizes

Size:	Age:
XS	3-4
S	5-6
M	7-10

## BAGGIES



**POLY-COTTON BAGGY**  
**Item WHBP**  
 White, Elasticated Waist,  
 Drawstring,, Two Side Pockets,  
 One Back Pocket.  
 Available in Sizes: **XS-XXXL**



**POLY-COTTON BAGGY**  
**Item NBBP**  
 Black, Elasticated Waist,  
 Drawstring,, Two Side Pockets,  
 One Back Pocket.  
 Available in Sizes: **XS-XXXL**



**COTTON BAGGY**  
**Item BCBP**  
 Big Check, Black & White  
 Available in Sizes: **XS-XXXL**



**POLY- COTTON BAGGY**  
**Item NBCP**  
 Small Check, Black & White  
 Available in Sizes: **XS-XXXL**

Elasticated Waist, Drawstring,  
 Two Side Pockets, One Back Pocket.

## CHEF'S TROUSERS



**BAGGY TRADITIONAL  
 CHECK- NAVY/BLUE**  
**Item SXBP**  
 Elasticated waist  
 Drawstring  
 Two Back Pockets  
 Poly Cotton  
 Available in Sizes: **XS-XXXL**

### Baggies Size Chart

Sizes:	To Fit Waist:
XS	26-28
S	30-32
M	34-36
L	38-40
XL	42-44
XXL	46-48
XXXL	50-52

Up Size Charges  
 (per Baggy)

sizes:  
 XXXL 10%



**Item BWCP**  
 Black & White Check



**Item UKCT**  
 Navy/Blue/White Check

### CHECK CHEF TROUSERS

Poly-Cotton, Zipper Fly, Belt Loops, 2 Side Pockets, 1 Hip Pocket.  
 Available in Sizes: **26-52**

sizes:  
 Up Size Charges 46-48 10%  
 (per trouser) 50-52 20%

THE BETTER BUILT BAGGY™

## The Most Comfortable Baggy You'll Ever Wear.

With a simple change of style, you can bring a fresh new look to your kitchen. It is the perfect mix that combines unrivalled comfort and effortless style to easily transition from kitchen to dining room. Our new Better Built Baggy™ Trouser is made exclusively by ChefWorks® with UltraLux™, the latest generation in woven, poly-cotton fabric. You will love the high-performance fabric that increases air circulation and holds its structure throughout the day. It is truly, "the most comfortable baggy you will ever wear."

**AVAILABLE IN  
SIZES XS - XXL**



<b>NAVY</b>	<b>BLACK</b>	<b>BROWN</b>	<b>BLACK</b>
<b>ITEM #</b>	<b>ITEM #</b>	<b>ITEM #</b>	<b>ITEM #</b>
<b>BPST-NAV</b>	<b>BSOL-BLK</b>	<b>BPLD-BRO</b>	<b>BPLD-BLK</b>

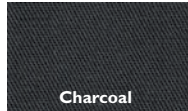
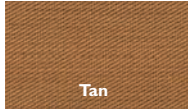
**Baggies  
Size Chart**

Sizes:	To Fit Waist:
XS	26-28
S	30-32
M	34-36
L	38-40
XL	42-44
XXL	46-48

- Curved, elastic waistband for extra comfort
- Built-in flat drawstring
- Zipper fly
- Two slanted front pockets
  - Slanted for easy access
  - Deep for keeping your items secure
- Built in mobile phone pocket
- Two roomy back pockets
- 32 inch inside leg



## COLOURED CHEF COATS



Soft garment washed fabric with seaming detail. These 100% Cotton double-breasted coats have dropped shoulder and back yoke to provide ease of movement. Long wearing. French cuffs, fabric covered buttons, left inset and thermometer pockets



Up Size Charges  
(per coat)  
sizes:  
XXXL 10%

**TAN**  
ITEM# FCTA

**OLIVE**  
ITEM# FCOL

**CHARCOAL**  
ITEM# FCCH

Coat  
Size Chart

Sizes:	To Fit Chest:
XS	32-34
S	36-38
M	40-42
L	44-46
XL	48-50
XXL	52-54
XXXL	56-58

## CARGO BAGGIES



PLEASE NOTE:  
CPSC is Yarn-Dyed  
Poly/Cotton  
All other colours are  
100% cotton

Up Size Charges  
(per Baggy)  
sizes:  
XXXL 10%



### THE SIX POCKET CARGO BAGGY

An addition to our wide range of trousers... The Cargo. They provide total comfort, as well as versatility. Wear them in the kitchen, or to a night on the town!

With two back pockets, two leg pockets, all with Velcro closure, as well as two side pockets, they are a relaxed fit trouser, with a pocket for every possession. 100% Cotton fabric, softened by garment washing, shows seam detail, especially on the twin stitched seams. They feature an elasticated waist, non-slip drawstring, and zip front. The perfect trouser for all occasions!

Baggies  
Size Chart

Sizes:	To Fit Waist:
XS	26-28
S	30-32
M	34-36
L	38-40
XL	42-44
XXL	46-48
XXXL	50-52

**OLIVE (ITEM # CPOL)**  
**STONE (ITEM # CPST)**  
**SMALL CHECK (ITEM # CPSC)**  
**CHARCOAL (ITEM # CPCH)**  
**BLACK (ITEM # CPBL)**

THE PROFESSIONAL SERIES TROUSER



## Executive Chef Trousers

### Wear it With or Without a Belt

Our new trouser satisfies the chef's need for professional business attire while providing a comfortable, functional working trouser. Wear it to meet and greet or make and bake. This is the perfect front and back of the house trouser. The Professional Series Trouser... Style, Fit and Practicality for the Professional in You.

- Available in our custom UltraLux Poly-Cotton, Yarn Dyed Fabric.
- Belt Loops and Built-in Flat Drawstring
- Curved Waistband for Extra Comfort
- Elastic at Sides of waistband for Superior Fit™
- Button Closure and Zipper Fly
- Two slanted front pockets - Slanted for easy access - Deep for keeping your items secure
- Two Back Pockets (back right pocket secures with a button)

Size Chart

Sizes:	To Fit Waist:
XS	26-28
S	30-32
M	34-36
L	38-40
XL	42-44
XXL	46-48

AVAILABLE IN SIZES  
XS - XXL

EXECUTIVE CHEF'S  
TAPERED APRONS

BLACK  
ITEM#  
PSER-BLK



see page 19  
for more details



DESIGNER BAGGIES



ChefWorks' baggy trousers are designed to provide comfort and durability, with an extra soft finish for the working chef. Each pair has two side pockets, one back pocket, tapered legs and elasticated waist with drawstring. Inside leg measurement on all sizes is approximately 33 inches.

Baggies  
Size Chart

Sizes:	To Fit Waist:
XS	26-28
S	30-32
M	34-36
L	38-40
XL	42-44
XXL	46-48
XXXL	50-52



**UTENSILS**  
Item: **UTBP\***  
100% cotton

**PIN STRIPE**  
Item: **PINBP**  
Poly/cotton  
Yarn-dyed

**BARB WIRE**  
Item: **BABP\***  
100% cotton

**CHALK STRIPE**  
Item: **CSBP**  
Poly/cotton  
Yarn-dyed

**CHARCOAL STRIPE**  
Item: **CHBP**  
100% cotton



**MANHATTAN NAVY**  
Item: **MNBP\***  
100% cotton

**CUISINE**  
Item: **BCUBP\***  
100% cotton

**ITALIAN**  
Item: **ITBP\***  
100% cotton

**FISH**  
Item: **FIBP\***  
100% cotton

**PEPPERS**  
Item: **PPBP\***  
100% cotton

**\*WHILE SUPPLIES LAST**

Up Size Charges  
(per Baggy)  
sizes:  
XXXL 10%

# DESIGNER COTTON APRONS



Tailored from 100% cotton, our designer Bib Aprons are a generous cut and feature a roomy divided pocket. Our Waist Aprons feature a pocket.

**Dimensions:** Bib 74cm width by 90cm depth  
Waist 78cm width by 43cm depth



DESIGNER BIB APRONS –  
**BA- BIB APRONS**



DESIGNER WAIST APRONS –  
**WA- WAIST APRONS**

## BEANIES



**One size fits all.  
Expandable  
Elastic Back.**

**BN- BEANIES**



**Adjustable.  
One size fits all.**

**BB- BASEBALL CAP**



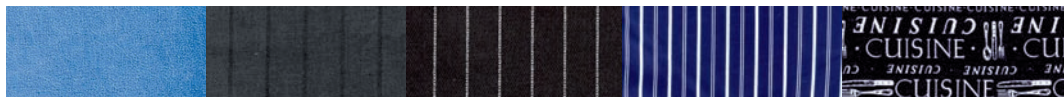
**UTENSILS**  
Item: UTBA\*  
Item: UTWA\*  
Item: BBUT\*  
Item: BNUT\*

**SMALL CHECK**  
Item: SCBA\*  
Item: BBSC\*  
Item: BNCS

**BIG CHECK**  
Item: BCBA  
Item: BCWA  
Item: BNBC

**BARB WIRE**  
Item: BWBA\*  
Item: BWWA\*  
Item: BBBW\*  
Item: BNBW\*

**CHALK STRIPE**  
Item: CSBA  
Item: CSWA  
Item: BBBS  
Item: BNCS\*



**DENIM**  
Item: DEBA\*  
Item: DEWA\*

**CHARCOAL STRIPE**  
Item: CHBA\*  
Item: CHWA\*  
Item: BBCH\*  
Item: BNCHS\*

**PIN STRIPE**  
Item: PSBA  
Item: PSWA  
Item: BBPS  
Item: BNPS

**MANHATTAN NAVY**  
Item: MNBA\*  
Item: MNWA\*  
Item: BBNM\*  
Item: BNMN\*

**CUISINE**  
Item: BCUBA\*  
Item: BCUWA\*  
Item: BBBCU\*  
Item: BNBQ\*



**ITALIAN**  
Item: ITBA\*  
Item: ITWA\*  
Item: BBIT\*  
Item: BNIT\*

**\*FISH**  
Item: FIBA\*  
Item: FIWA\*  
Item: BBFI\*  
Item: BNFI\*

**PEPPERS**  
Item: PPWA\*  
Item: BBPP\*  
Item: BNPP\*

**WHITE**  
Item: BNWH

**BLACK**  
Item: BNBK

**\*WHILE SUPPLIES LAST**

## COOL VENT BEANIES



**CoolVent™ Beanie** **WHITE**  
ONE SIZE FITS ALL Item DFWB



Two-way technology moves moisture away from the body while allowing cool air to filter back in. Keeps you dry, cool and comfortable.

Black and White beanies with a CoolVent™ top, secure with a Velcro® strap at the back, one size fits all.



**BLACK** **CoolVent™ Beanie**  
Item DFBB ONE SIZE FITS ALL





**ChefWorks®**  
Passionate About Chefs

## B I S T R O A P R O N S

Outstanding range of Front-of House Bistro aprons, in hard-wearing polyester/cotton, suitable for commercial laundering.



with pocket\*



with pocket



without pocket

\*with one central pocket\*\*



WHITE



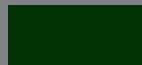
BLACK



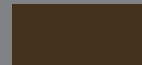
NAVY



BURGUNDY



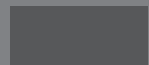
GREEN



CHOCOLATE



OLIVE



CHARCOAL

**SHORT** – 75cm width 37cm length.  
Pocket 22cm width 20cm length,  
with integral pen division.  
Twill ties 88cm in length.

**BISWH** White  
**BISBK** Black  
**BISNA** Navy  
**BISBU** Burgundy  
**BISGR** Green  
**BISCHO** Chocolate  
**BISOL** Olive  
**BISCH** Charcoal

\*\*not as per photograph

**REGULAR** – 100cm width, 70cm length.  
Pocket 22cm width 20cm length,  
with integral pen division.  
Twill ties 95cm in length.

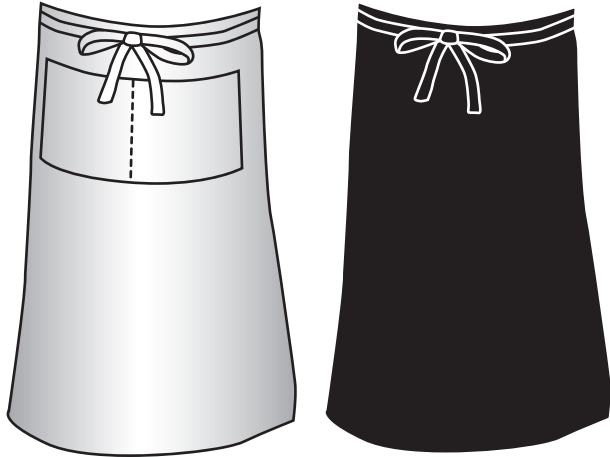
**BIRWH** White  
**BIRBK** Black  
**BIRNA** Navy  
**BIRBU** Burgundy  
**BIRGR** Green  
**BIRCHO** Chocolate  
**BIROL** Olive  
**BIRCH** Charcoal

**LONG** – 100cm width, 100cm  
length.  
Twill ties 95cm in length

**BILWH** White  
**BILBK** Black  
**BILNA** Navy  
**BILBU** Burgundy  
**BILGR** Green  
**BILCHO** Chocolate  
**BILOL** Olive  
**BILCH** Charcoal

# ESSENTIAL APRONS

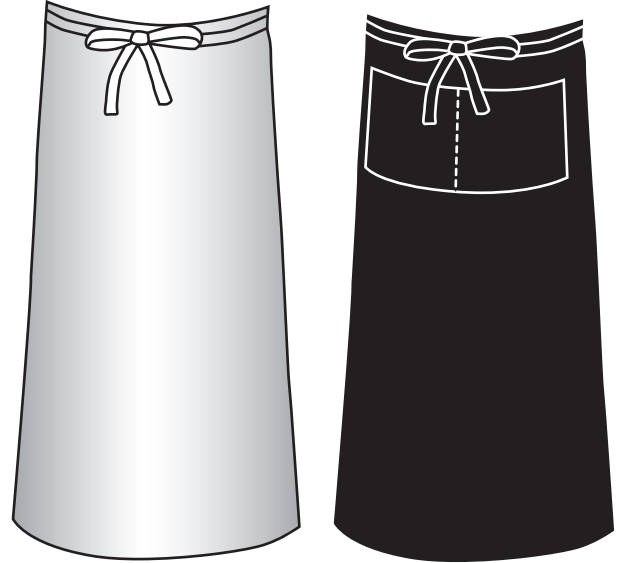
## WAIST APRONS



All width 90 x depth 70

- WHWA** White
- WHWAP** White (w/pocket)
- BLWA** Black
- BLWAP** Black (w/pocket)
- BUWA** Burgundy
- BUWAP** Burgundy (w/pocket)
- ROWA** Royal
- BOWA** Bottle

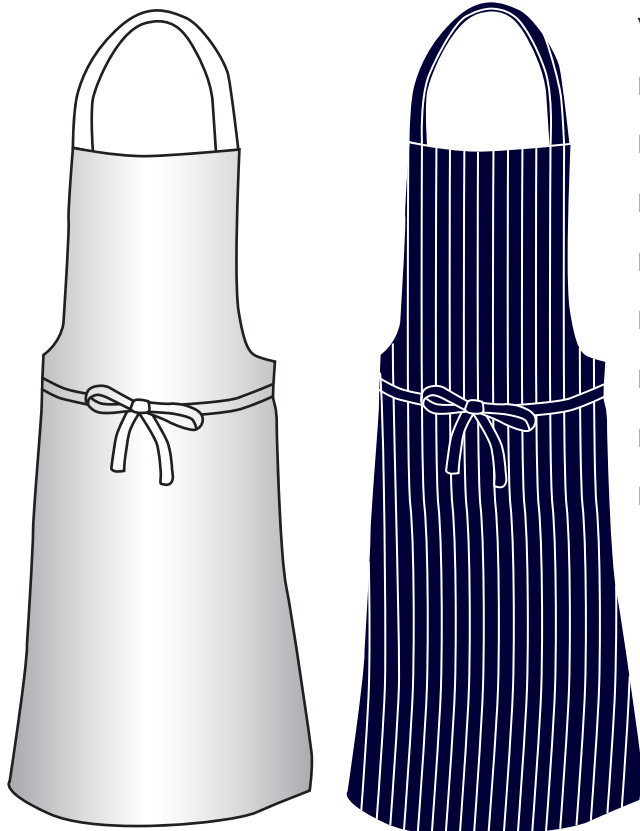
## BAR APRONS



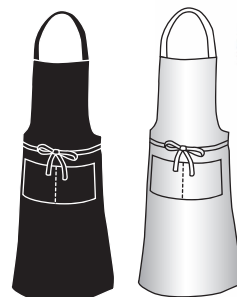
- |   | width | depth |
|---|-------|-------|
| <b>BRWH</b> White Bar Apron               | 90    | 90    |
| <b>BRBK</b> Black Bar Apron (w/pocket)    | 70    | 90    |
| <b>BRBU</b> Burgundy Bar Apron (w/pocket) | 70    | 90    |



## BIB APRONS



- |                                  | width | depth |
|----------------------------------|-------|-------|
| <b>WHBA</b> White                | 70    | 100   |
| <b>WHBAP</b> White (w/pockets)   | 70    | 100   |
| <b>BLBA</b> Black                | 70    | 90    |
| <b>BLBAP</b> Black (w/pockets)   | 70    | 90    |
| <b>BSBA</b> Navy Butchers Stripe | 70    | 100   |
| <b>RSBA</b> Red Butchers Stripe  | 70    | 100   |
| <b>NABA</b> Navy                 | 70    | 90    |
| <b>BUBA</b> Burgundy             | 70    | 90    |
| <b>ROBA</b> Royal                | 70    | 90    |
| <b>BOBA</b> Bottle               | 70    | 90    |



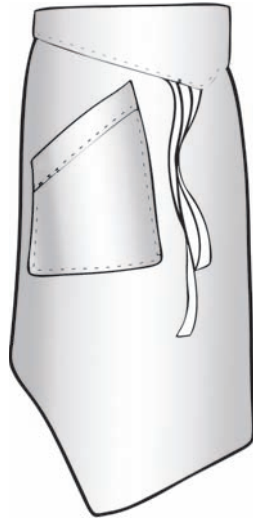
with pockets



Aprons with pockets are noted below, all others do not have pockets. White aprons are 100% cotton, all others are polyester cotton.

Other colours and sizes available on request

### CHEFS TAPERED APRONS



#### CHEFS TAPERED APRON

Item **BLTA**

Poly-Cotton Blend  
Easy Access Angled Pocket  
"Flip-Over" Front Flap  
Looped Towel Holder  
Contoured for a Comfortable Fit  
Ties are 40" in length

#### CHEFS TAPERED APRON

Item **PCTA**

White Poly-Cotton Blend  
Easy Access Angled Pocket  
"Flip-Over" Front Flap  
Looped Towel Holder  
Contoured for a Comfortable Fit  
Ties are 40" in length

### BISTRO WAIST APRONS



All width 70 x depth 37

- WHBN** White
- WHBIP** White (with pocket)
- BLBN** Black Bistro Short
- BLBP** Black Bistro Short (w/2 pockets)
- BUBN** Burgundy
- BUBIP** Burgundy (w/pocket)



### V-NECK TUXEDO APRON



**BLACK**  
Item **VNBK**



**SLATE**  
Item **VNSL**



**CHOCOLATE**  
Item **VNCHO**



**BLACK**  
Item **VNBK**



**SLATE**  
Item **VNSL**



**CHOCOLATE**  
Item **VNCHO**

#### V-NECK TUXEDO APRON

Adjustable neck closure, centre-divided patch pocket. Available in Black, Slate and Chocolate.  
Size 32" L x 30" W

BEANIES



**BLACK**  
Item BNBK



**WHITE**  
Item BNWH

One size fits all. Expandable Elastic Back.

COOL VENT™ BEANIES



**Cool Vent™ Beanie**  
ONE SIZE FITS ALL  
WHITE  
Item DFWB



Two-way technology moves moisture away from the body while allowing cool air to filter back in. Keeps you dry, cool and comfortable.

Black and White beanies with a Cool Vent™ top, secure with a Velcro® strap at the back, one size fits all.



**Cool Vent™ Beanie**  
ONE SIZE FITS ALL  
BLACK  
Item DFBB

SOLID COLOUR BASEBALL CAPS

Embroidery on Solid Colour baseball caps available - see details of embroidery on page 4



**BOTTLE**  
Item BBBO



**ROYAL**  
Item BBRO



**RED**  
Item BBRE



**WHITE**  
Item BBWH



**NAVY**  
Item BBNA



**BLACK**  
Item BBBK

Heavy Cotton Fabric,  
Buckle Adjuster

HEAD WRAP



**Head Wrap**  
BLACK  
Item SCBL

ONE SIZE FITS ALL

NECKERCHIEFS

Soft and lightweight for maximum comfort 40" x 19"



**WHITE**  
ITEM NECK

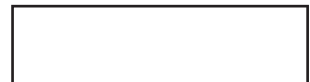


**BLACK**  
Item NBCK

CHEF HATS



One size fits all, velcro close at the back.



**WHITE** Item CHAT



**BLACK** Item BHAT

TABARDS



**DENISE TABARD**

Polyester/Cotton

Adjustable side tabs.

**AQUA**



**DNAQ**

**NAVY**



**DNNA**

**ROYAL**



**DNRO**

**SKY**



**DNSK**

**WHITE**



**DNWH**

Other colours and Tabards with pockets available on request

**Size Chart**

Sizes:	To Fit Chest:
S	30-34
M	36-40
L	42-46
XL	48-54

# T-SHIRTS, POLOS, SWEATS & FLEECES



**POLO:**  
230gms  
heavyweight  
ringspun 100%  
cotton pique  
polo



**T-SHIRTS:** 175 /  
185gms  
heavyweight 100%  
Jersey Cotton.



**SWEATSHIRTS:**  
300gms  
heavyweight 80%  
Cotton 20%  
Polyester



**FLEECES:**  
280 gms  
fleece, full  
zipped  
front and 2  
zipped  
lower  
pockets.

WHITE	NAVY	RED	BLACK	MAROON	FOREST GREEN	ROYAL
-------	------	-----	-------	--------	--------------	-------

Polo Refs:	PSWH	PSNA	PSRE	PSBK	PSMA	PSFG	PSRO
T-shirt Refs:	TSWH	TSNA	TSRE	TSBK	TSMA	TSFG	TSRO
Sweatshirt Refs:	SWWH	SWNA	SWRE	SWBK	SWMA	SWFG	SWRO
Fleeces Refs:	N/A	FLNA	FLRE	FLBK	N/A	FLFG	FLRO

## OTHER COLOURS AND STYLES AVAILABLE

Sizes are approximate and for guidance only. Colours are only as accurate as the printing process allows.

Up Size Charges  
(per Fleece)  
sizes:  
XXXL 10%

Size Chart	
Sizes:	To Fit Chest:
S	38
M	40
L	42
XL	44
XXL	46
XXXL	48

# CHEF WORKS KNIVES

## GEARED TOWARD THE PROFESSIONAL

Lightweight and easy to use. The high-carbon German stainless steel blades have been crafted with a superior edge that holds well and sharpens easily. Ergonomically designed for a comfortable fit with maximum speed and control. With seamless POM handles our stamped knives are as easy to maintain as they are functional. NSF approved. Each knife has a convenient knife guard for easy storage and safety.



### Stamped Series PB3



**8" CHEF'S KNIFE**  
ITEM # PB3-CHEF-080



**CURVED BREAD KNIFE**  
ITEM # PB3-BREC-100



**7" SANTOKU GRANTON EDGE**  
ITEM # PB3-SANG-070



**6" BONING STIFF**  
ITEM # PB3-BONS-060



**10" CARVING KNIFE**  
ITEM # PB3-CARV-100



**3.5" PARING KNIFE**  
ITEM # PB3-PARP-035



**10" CHEF'S KNIFE**  
ITEM # PB3-CHEF-100



**3.5" SERRATED PARING KNIFE**  
ITEM # PB3-PARS-035



**2.5" BIRD BEAK PEELER**  
ITEM # PB3-PEEL-025



**12" SLICING KNIFE**  
ITEM # PB3-SLIG-120

PLEASE NOTE: \*Case and Briefcase do not include knives or utensils - pictures are for illustration purposes only

**KNIFE CASE**  
Heavy Duty Cordura® Nylon rugged 17  
Pocket Knife Case, perfect for transporting  
and storing knives  
ITEM # PB2000-KCAS



**KNIFE BRIEFCASE**  
Leatherette briefcase with  
customised tray. Elastic on flap to  
hold additional knives. Zipper pouch  
in front, shoulder strap and carrying  
handle, are adjustable and padded  
ITEM # PB2000-BRIE

\*Knives may not be purchased by anyone under the age of 18

# FRONT OF HOUSE



## DRESS SHIRTS

Polyester/Combed cotton.  
Long sleeves, Available in short sleeves in black, One Breast pocket.  
Unisex.  
Sizes available **XS to XXXL**.



**WHITE ITEM DS05**  
White



**BURGUNDY ITEM DS02**  
Burgundy

Royal Blue, Black, Black short sleeves, French Blue and Charcoal



**FRENCH BLUE ITEM DS26**



**CHARCOAL ITEM DS27**



**BLACK ITEM DS01**



**BLACK ITEM DS01-SS**  
short sleeve

**ROYAL BLUE ITEM DS25**

### Shirt Size Chart

Sizes:	To Fit Chest:	To Fit Neck:
XS	32-34 inches	13-13 1/2 inches
S	36-38 inches	14-14 1/2 inches
M	40-42 inches	15-15 1/2 inches
L	44-46 inches	16-16 1/2 inches
XL	48-50 inches	17-17 1/2 inches
XXL	52-54 inches	18-18 1/2 inches
XXXL	56-58 inches	19-19 1/2 inches

**TAN AND CHOCOLATE DRESS SHIRTS ARE ALSO AVAILABLE**

## BANDED COLLAR SHIRTS

Polyester / Combed cotton. Long sleeve,  
One breast pocket. Unisex.  
Sizes available in **XS - XXXL**

Up Size Charges  
(per Shirt)  
sizes:  
XXXL 10%

Burgundy and Silver

Men's and Ladies Black



**BURGUNDY ITEM BS02**



**SILVER GREY ITEM BS09**



**MEN'S BLACK ITEM BS01**



**LADIES BLACK ITEM W200-BLK**  
available in sizes **XS- XXL**



**SHORT SLEEVE BLACK DRESS SHIRT**

## V-NECK TUXEDO APRON



**BLACK**  
Item **VNBK**



**SLATE**  
Item **VNSL**



**CHOCOLATE**  
Item **VNCHO**

Adjustable neck closure,  
centre-divided patch pocket.  
Available in Black, Slate and  
Chocolate.  
Size 32" L x 30" W



# FRONT OF HOUSE

## BOW TIES

Item **BTBU** Burgundy Satin  
 Item **BTBS** Black Satin



**POLO AND T-SHIRTS AVAILABLE SEE PAGE 21**

**APRONS AVAILABLE SEE PAGE 18 & 19**

**SERVER COATS AVAILABLE SEE PAGE 11**



## WAISTCOATS

All Waistcoats are fully lined with Navy or Black polyester, and feature 5 buttons, two pockets, and an adjustable back strap. Ladies waistcoats also available. Polyester/Cotton.

### All Waistcoats

Sizes available **XS to XXL**.



ITEM #WCBK Black



ITEM #WCBU Burgundy

Size	To Fit Chest:
XS	31-33 inches
S	35-37 inches
M	39-41 inches
L	43-45 inches
XL	47-49 inches
XXL	51-53 inches

## TIES

Polyester



Black  
ITEM TIEBK



Grey  
ITEM TIEGR



Burgundy  
ITEM TIEBU



Blue Wide  
Stripe  
ITEM  
TP6S-BLU



Blue Narrow  
Stripe  
ITEM  
TPMS-BPU



Charcoal  
Spot  
ITEM  
TPPD-BLK



Multi  
Coloured  
Spot  
ITEM  
TPPD-EGD



Grey Stripe  
ITEM  
T0000-SDI



Chocolate  
Stripe  
ITEM  
TP6S-EAR



## SIZE CONVERSION CHARTS

### JACKETS - TRADITIONAL

Marked Size	XS	S	M	L	XL	XXL	XXXL	XXXXL
To fit Chest measuring inches	32"/34"	36"/38"	40"/42"	44"/46"	48"/50"	52"/54"	56"/58"	60"/62"
To fit chest measuring cms	81/86	91/96	102/107	112/117	122/127	132/137	142/147	152/157
Euro size	42/44	46/48	50/54	56/58	60/64	66/68	70/72	74/76

### JACKETS - EXECUTIVE

Marked Size	34	36	38	40	42	44	46	48	50	52	54	56
To fit Chest measuring inches	34	36	38	40	42	44	46	48	50	52	54	56
To fit chest measuring cms	86	91	96	102	107	112	117	122	127	132	137	142
Euro size	44	46	48	50/52	52/54	56	58	60/62	64	66	68	70

### BAGGIES

Marked Size	XS	S	M	L	XL	XXL	XXXL
To fit waist measuring inches	26"/28"	30"/32"	34"/36"	38"/40"	42"/44"	46"/48"	50"/52"
To fit waist measuring cms	66/71	76/81	86/91	96/102	107/112	117/122	127/132
Euro Size	42/44	46/48	50/52	54/56	58/60	62/66	68/70

### TROUSERS

Marked Size	26	28	30	32	34	36	38	40	42	44	46	48	50	52
To fit waist measuring inches	26	28	30	32	34	36	38	40	42	44	46	48	50	52
To fit waist measuring cms	66	71	76	81	86	91	96	102	107	112	117	122	127	132
Euro Size	42	44	46	48	50	52	54	56	58	60	62	66	68	70

### METRIC CONVERSION CHART

Cm:	66	71	76	81	86	91	96	102	107	112	117	122	127	132	137	142	147	152
Inches:	26	28	30	32	34	36	38	40	42	44	46	48	50	52	54	56	58	60