

NOTICE: This document contains references to Agilent Technologies. Agilent's former Test and Measurement business has become Keysight Technologies. For more information, go to **www.keysight.com**.





September 2011
Smith Chart Utility

© **Agilent Technologies, Inc. 2000-2011**

5301 Stevens Creek Blvd., Santa Clara, CA 95052 USA

No part of this documentation may be reproduced in any form or by any means (including electronic storage and retrieval or translation into a foreign language) without prior agreement and written consent from Agilent Technologies, Inc. as governed by United States and international copyright laws.

Acknowledgments

Mentor Graphics is a trademark of Mentor Graphics Corporation in the U.S. and other countries. Mentor products and processes are registered trademarks of Mentor Graphics Corporation. * Calibre is a trademark of Mentor Graphics Corporation in the US and other countries. "Microsoft®, Windows®, MS Windows®, Windows NT®, Windows 2000® and Windows Internet Explorer® are U.S. registered trademarks of Microsoft Corporation. Pentium® is a U.S. registered trademark of Intel Corporation. PostScript® and Acrobat® are trademarks of Adobe Systems Incorporated. UNIX® is a registered trademark of the Open Group. Oracle and Java and registered trademarks of Oracle and/or its affiliates. Other names may be trademarks of their respective owners. SystemC® is a registered trademark of Open SystemC Initiative, Inc. in the United States and other countries and is used with permission. MATLAB® is a U.S. registered trademark of The Math Works, Inc.. HiSIM2 source code, and all copyrights, trade secrets or other intellectual property rights in and to the source code in its entirety, is owned by Hiroshima University and STARC. FLEXIm is a trademark of Globetrotter Software, Incorporated. Layout Boolean Engine by Klaas Holwerda, v1.7 <http://www.xs4all.nl/~kholwerd/bool.html> . FreeType Project, Copyright (c) 1996-1999 by David Turner, Robert Wilhelm, and Werner Lemberg. QuestAgent search engine (c) 2000-2002, JObjects. Motif is a trademark of the Open Software Foundation. Netscape is a trademark of Netscape Communications Corporation. Netscape Portable Runtime (NSPR), Copyright (c) 1998-2003 The Mozilla Organization. A copy of the Mozilla Public License is at <http://www.mozilla.org/MPL/> . FFTW, The Fastest Fourier Transform in the West, Copyright (c) 1997-1999 Massachusetts Institute of Technology. All rights reserved.

The following third-party libraries are used by the NlogN Momentum solver:

"This program includes Metis 4.0, Copyright © 1998, Regents of the University of Minnesota", <http://www.cs.umn.edu/~metis> , METIS was written by George Karypis (karypis@cs.umn.edu).

Intel@ Math Kernel Library, <http://www.intel.com/software/products/mkl>

SuperLU_MT version 2.0 - Copyright © 2003, The Regents of the University of California, through Lawrence Berkeley National Laboratory (subject to receipt of any required approvals from U.S. Dept. of Energy). All rights reserved. SuperLU Disclaimer: THIS SOFTWARE IS PROVIDED BY THE COPYRIGHT HOLDERS AND CONTRIBUTORS "AS IS" AND ANY EXPRESS OR IMPLIED WARRANTIES, INCLUDING, BUT NOT LIMITED TO, THE IMPLIED WARRANTIES OF MERCHANTABILITY AND FITNESS FOR A PARTICULAR PURPOSE ARE DISCLAIMED. IN NO EVENT SHALL THE COPYRIGHT OWNER OR CONTRIBUTORS BE LIABLE FOR ANY DIRECT, INDIRECT, INCIDENTAL, SPECIAL, EXEMPLARY, OR CONSEQUENTIAL DAMAGES (INCLUDING, BUT NOT LIMITED TO, PROCUREMENT OF

SUBSTITUTE GOODS OR SERVICES; LOSS OF USE, DATA, OR PROFITS; OR BUSINESS INTERRUPTION) HOWEVER CAUSED AND ON ANY THEORY OF LIABILITY, WHETHER IN CONTRACT, STRICT LIABILITY, OR TORT (INCLUDING NEGLIGENCE OR OTHERWISE) ARISING IN ANY WAY OUT OF THE USE OF THIS SOFTWARE, EVEN IF ADVISED OF THE POSSIBILITY OF SUCH DAMAGE.

7-zip - 7-Zip Copyright: Copyright (C) 1999-2009 Igor Pavlov. Licenses for files are: 7z.dll: GNU LGPL + unRAR restriction, All other files: GNU LGPL. 7-zip License: This library is free software; you can redistribute it and/or modify it under the terms of the GNU Lesser General Public License as published by the Free Software Foundation; either version 2.1 of the License, or (at your option) any later version. This library is distributed in the hope that it will be useful, but WITHOUT ANY WARRANTY; without even the implied warranty of MERCHANTABILITY or FITNESS FOR A PARTICULAR PURPOSE. See the GNU Lesser General Public License for more details. You should have received a copy of the GNU Lesser General Public License along with this library; if not, write to the Free Software Foundation, Inc., 59 Temple Place, Suite 330, Boston, MA 02111-1307 USA. unRAR copyright: The decompression engine for RAR archives was developed using source code of unRAR program. All copyrights to original unRAR code are owned by Alexander Roshal. unRAR License: The unRAR sources cannot be used to re-create the RAR compression algorithm, which is proprietary. Distribution of modified unRAR sources in separate form or as a part of other software is permitted, provided that it is clearly stated in the documentation and source comments that the code may not be used to develop a RAR (WinRAR) compatible archiver. 7-zip Availability: <http://www.7-zip.org/>

AMD Version 2.2 - AMD Notice: The AMD code was modified. Used by permission. AMD copyright: AMD Version 2.2, Copyright © 2007 by Timothy A. Davis, Patrick R. Amestoy, and Iain S. Duff. All Rights Reserved. AMD License: Your use or distribution of AMD or any modified version of AMD implies that you agree to this License. This library is free software; you can redistribute it and/or modify it under the terms of the GNU Lesser General Public License as published by the Free Software Foundation; either version 2.1 of the License, or (at your option) any later version. This library is distributed in the hope that it will be useful, but WITHOUT ANY WARRANTY; without even the implied warranty of MERCHANTABILITY or FITNESS FOR A PARTICULAR PURPOSE. See the GNU Lesser General Public License for more details. You should have received a copy of the GNU Lesser General Public License along with this library; if not, write to the Free Software Foundation, Inc., 51 Franklin St, Fifth Floor, Boston, MA 02110-1301 USA Permission is hereby granted to use or copy this program under the terms of the GNU LGPL, provided that the Copyright, this License, and the Availability of the original version is retained on all copies. User documentation of any code that uses this code or any modified version of this code must cite the Copyright, this License, the Availability note, and "Used by permission." Permission to modify the code and to distribute modified code is granted, provided the Copyright, this License, and the Availability note are retained, and a notice that the code was modified is included. AMD Availability: <http://www.cise.ufl.edu/research/sparse/amd>

UMFPACK 5.0.2 - UMFPACK Notice: The UMFPACK code was modified. Used by permission. UMFPACK Copyright: UMFPACK Copyright © 1995-2006 by Timothy A. Davis. All Rights Reserved. UMFPACK License: Your use or distribution of UMFPACK or any modified version of UMFPACK implies that you agree to this License. This library is free software; you can redistribute it and/or modify it under the terms of the GNU Lesser General Public License

as published by the Free Software Foundation; either version 2.1 of the License, or (at your option) any later version. This library is distributed in the hope that it will be useful, but WITHOUT ANY WARRANTY; without even the implied warranty of MERCHANTABILITY or FITNESS FOR A PARTICULAR PURPOSE. See the GNU Lesser General Public License for more details. You should have received a copy of the GNU Lesser General Public License along with this library; if not, write to the Free Software Foundation, Inc., 51 Franklin St, Fifth Floor, Boston, MA 02110-1301 USA Permission is hereby granted to use or copy this program under the terms of the GNU LGPL, provided that the Copyright, this License, and the Availability of the original version is retained on all copies. User documentation of any code that uses this code or any modified version of this code must cite the Copyright, this License, the Availability note, and "Used by permission." Permission to modify the code and to distribute modified code is granted, provided the Copyright, this License, and the Availability note are retained, and a notice that the code was modified is included. UMFPACK Availability: <http://www.cise.ufl.edu/research/sparse/umfpack> UMFPACK (including versions 2.2.1 and earlier, in FORTRAN) is available at <http://www.cise.ufl.edu/research/sparse> . MA38 is available in the Harwell Subroutine Library. This version of UMFPACK includes a modified form of COLAMD Version 2.0, originally released on Jan. 31, 2000, also available at <http://www.cise.ufl.edu/research/sparse> . COLAMD V2.0 is also incorporated as a built-in function in MATLAB version 6.1, by The MathWorks, Inc. <http://www.mathworks.com> . COLAMD V1.0 appears as a column-preordering in SuperLU (SuperLU is available at <http://www.netlib.org>). UMFPACK v4.0 is a built-in routine in MATLAB 6.5. UMFPACK v4.3 is a built-in routine in MATLAB 7.1.

Qt Version 4.6.3 - Qt Notice: The Qt code was modified. Used by permission. Qt copyright: Qt Version 4.6.3, Copyright (c) 2010 by Nokia Corporation. All Rights Reserved. Qt License: Your use or distribution of Qt or any modified version of Qt implies that you agree to this License. This library is free software; you can redistribute it and/or modify it under the

terms of the GNU Lesser General Public License as published by the Free Software Foundation; either version 2.1 of the License, or (at your option) any later version. This library is distributed in the hope that it will be useful, but WITHOUT ANY WARRANTY; without even the implied warranty of MERCHANTABILITY or FITNESS FOR A PARTICULAR PURPOSE. See the GNU Lesser General Public License for more details. You should have received a copy of the GNU Lesser General Public License along with this library; if not, write to the Free Software Foundation, Inc., 51 Franklin St, Fifth Floor, Boston, MA 02110-1301 USA Permission is hereby granted to use or copy this program under the terms of the GNU LGPL, provided that the Copyright, this License, and the Availability of the original version is retained on all copies. User

documentation of any code that uses this code or any modified version of this code must cite the Copyright, this License, the Availability note, and "Used by permission." Permission to modify the code and to distribute modified code is granted, provided the Copyright, this License, and the Availability note are retained, and a notice that the code was modified is included. Qt Availability: <http://www.qtsoftware.com/downloads> Patches Applied to Qt can be found in the installation at: `$HPEESOF_DIR/prod/licenses/thirdparty/qt/patches`. You may also contact Brian Buchanan at Agilent Inc. at brian_buchanan@agilent.com for more information.

The HiSIM_HV source code, and all copyrights, trade secrets or other intellectual property rights in and to the source code, is owned by Hiroshima University and/or STARC.

Errata The ADS product may contain references to "HP" or "HPEESOF" such as in file names and directory names. The business entity formerly known as "HP EEsof" is now part of Agilent Technologies and is known as "Agilent EEsof". To avoid broken functionality and to maintain backward compatibility for our customers, we did not change all the names and labels that contain "HP" or "HPEESOF" references.

Warranty The material contained in this document is provided "as is", and is subject to being changed, without notice, in future editions. Further, to the maximum extent permitted by applicable law, Agilent disclaims all warranties, either express or implied, with regard to this documentation and any information contained herein, including but not limited to the implied warranties of merchantability and fitness for a particular purpose. Agilent shall not be liable for errors or for incidental or consequential damages in connection with the furnishing, use, or performance of this document or of any information contained herein. Should Agilent and the user have a separate written agreement with warranty terms covering the material in this document that conflict with these terms, the warranty terms in the separate agreement shall control.

Technology Licenses The hardware and/or software described in this document are furnished under a license and may be used or copied only in accordance with the terms of such license. Portions of this product include the SystemC software licensed under Open Source terms, which are available for download at <http://systemc.org/>. This software is redistributed by Agilent. The Contributors of the SystemC software provide this software "as is" and offer no warranty of any kind, express or implied, including without limitation warranties or conditions or title and non-infringement, and implied warranties or conditions merchantability and fitness for a particular purpose. Contributors shall not be liable for any damages of any kind including without limitation direct, indirect, special, incidental and consequential damages, such as lost profits. Any provisions that differ from this disclaimer are offered by Agilent only.

Restricted Rights Legend U.S. Government Restricted Rights. Software and technical data rights granted to the federal government include only those rights customarily provided to end user customers. Agilent provides this customary commercial license in Software and technical data pursuant to FAR 12.211 (Technical Data) and 12.212 (Computer Software) and, for the Department of Defense, DFARS 252.227-7015 (Technical Data - Commercial Items) and DFARS 227.7202-3 (Rights in Commercial Computer Software or Computer Software Documentation).

Smith Chart Utility

Introducing the Smith Chart Utility	7
Smith Chart Drawing Area	20
Smith Chart Network Area	30
Using SmartComponents in Smith Chart Utility	33

Introducing the Smith Chart Utility

The Smith Chart Utility provides full Smith Chart capabilities, synthesis of matching networks, enabling impedance matching and plotting of constant *Gain* / *Q* / *VSWR* / *Noise* circles. The Smith Chart Utility is accessed from the Schematic window **Tools** menu.

The Smith Chart Utility documentation includes these sections:

- [Step-by-Step Example](#) describes how to design the single frequency impedance matching network.
- *Using SmartComponents* (dgutil) answers many common questions relating to Utility use.
- *Smith Chart Drawing Area* (dgutil) explains how to manipulate the Smith Chart.
- *Smith Chart Network Area* (dgutil) explains how to analyze network data.

Step-by-Step Example

The step-by-step example takes you through the through the design and analysis of a single frequency impedance matching network. After completing this example, you should have a basic understanding of the Utility and be ready to begin using the tool. Follow these steps to begin:

- [Setting Up the Design Environment](#)
- [Designing and Analyzing a Network](#)

**Note**

You should already be familiar with the basic features of Advanced Design System. For help with ADS basic features, refer to the *Schematic Capture and Layout* (usrguide) documentation.

Setting Up the Design Environment

Before you can use the Smith Chart Utility, you must set up the design environment by using these steps:

- [Setting DesignGuide Preferences](#)
- [Opening a Workspace](#)
- [Opening a Schematic Window](#)
- [Opening the Smith Chart Utility](#)

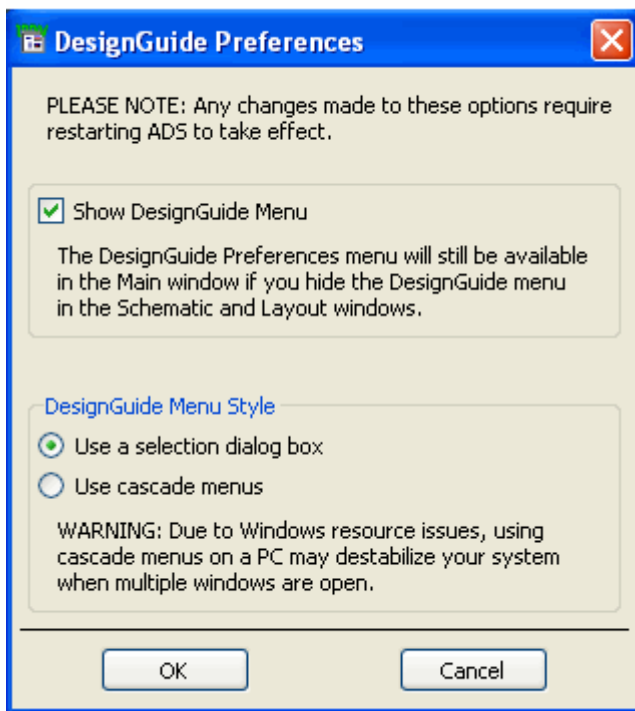
- [Displaying the SmartComponent Palette](#)

Setting DesignGuide Preferences

All DesignGuides can be accessed through either cascading menus or dialog boxes. You can configure your preferred method in the ADS Main window or from the Schematic window.

To configure access through menus or dialog boxes:

1. From the Schematic window, choose **DesignGuide > Preferences**.
2. In the DesignGuide Menu Style group box, choose either **Use a selection dialog box** or **Use cascade menus**.



3. Close and restart the program for your preference changes to take effect.

Note
On PC systems, Windows resource issues might limit the use of cascading menus. When multiple windows are open, your system could become destabilized. Therefore, the dialog box menu style might be best for these situations.

The ADS Main window DesignGuide menu contains these choices:

- **DesignGuide Developer Studio > Start DesignGuide Studio** is only available on this menu if you have installed the DesignGuide Developer Studio to open the initial Developer Studio dialog box.
- **DesignGuide Developer Studio > Developer Studio Documentation** is only

available on this menu if you have installed the DesignGuide Developer Studio to open the DesignGuide Developer Studio documentation.

Note

Another way to access the DesignGuide Developer Studio documentation is by selecting Help > Topics and Index > DesignGuides > DesignGuide Developer Studio from any ADS program window.

- **Add DesignGuide** opens a directory browser in which you can add a DesignGuide to your installation. This is primarily intended for use with DesignGuides that are custom-built through the Developer Studio.
- **List/Remove DesignGuide** opens a list of your installed DesignGuides. Select any that you would like to uninstall and choose the **Remove** button.
- **Preferences** opens a dialog box that enables you to:
 - Disable the DesignGuide menu commands (all except Preferences) in the Main window by unchecking this box. In the Schematic and Layout windows, the complete **DesignGuide** menu and all of its commands are removed if this box is unchecked.
 - Select your preferred interface method, either cascading menus or dialog boxes.

Opening a Workspace

The ADS design environment is set up within a Workspace.

To create a new Workspace:

1. From the ADS Main window, choose **File > New Workspace** or click **Create a New Workspace** icon on the toolbar.



Create a new Workspace

2. In the dialog, define the location of the Workspace and assign a Workspace name.

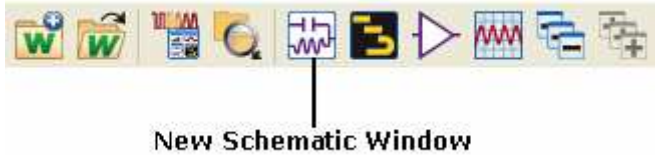
For more details on creating a new space, refer to *Using Workspace* (adstour).

Opening a Schematic Window

A new schematic is needed to contain the lowpass component for this example.

To open a Schematic window:

1. From the ADS Main window, choose **Window > New Schematic** or click **New Schematic Window** icon on the toolbar. The New Schematic window appears.



Note

Depending on how your ADS preferences are set, a Schematic window can appear automatically when you create or open a Workspace.

2. In the New Schematic window, provide Library and Cell details to create a cell named *SmithChartExample*.

For more details on creating a new schematic, refer *Using Designs* (adstour).

Opening the Smith Chart Utility

The Smith Chart Utility is accessed from the **Tools** menu or the DesignGuide menu in the Schematic window.

To open the Smith Chart Utility:

1. In the Schematic window, choose **Tools > Smith Chart**. The Smith Chart Utility window opens. Or, you can choose one of these paths from the DesignGuide menu:
 - **DesignGuide > Amplifier > Tools > Smith Chart Utility**
 - **DesignGuide > Filter > Smith Chart**
 - **DesignGuide > Mixers > Tools > Smith Chart Utility**
 - **DesignGuide > Oscillator > Tools > Smith Chart**

Note

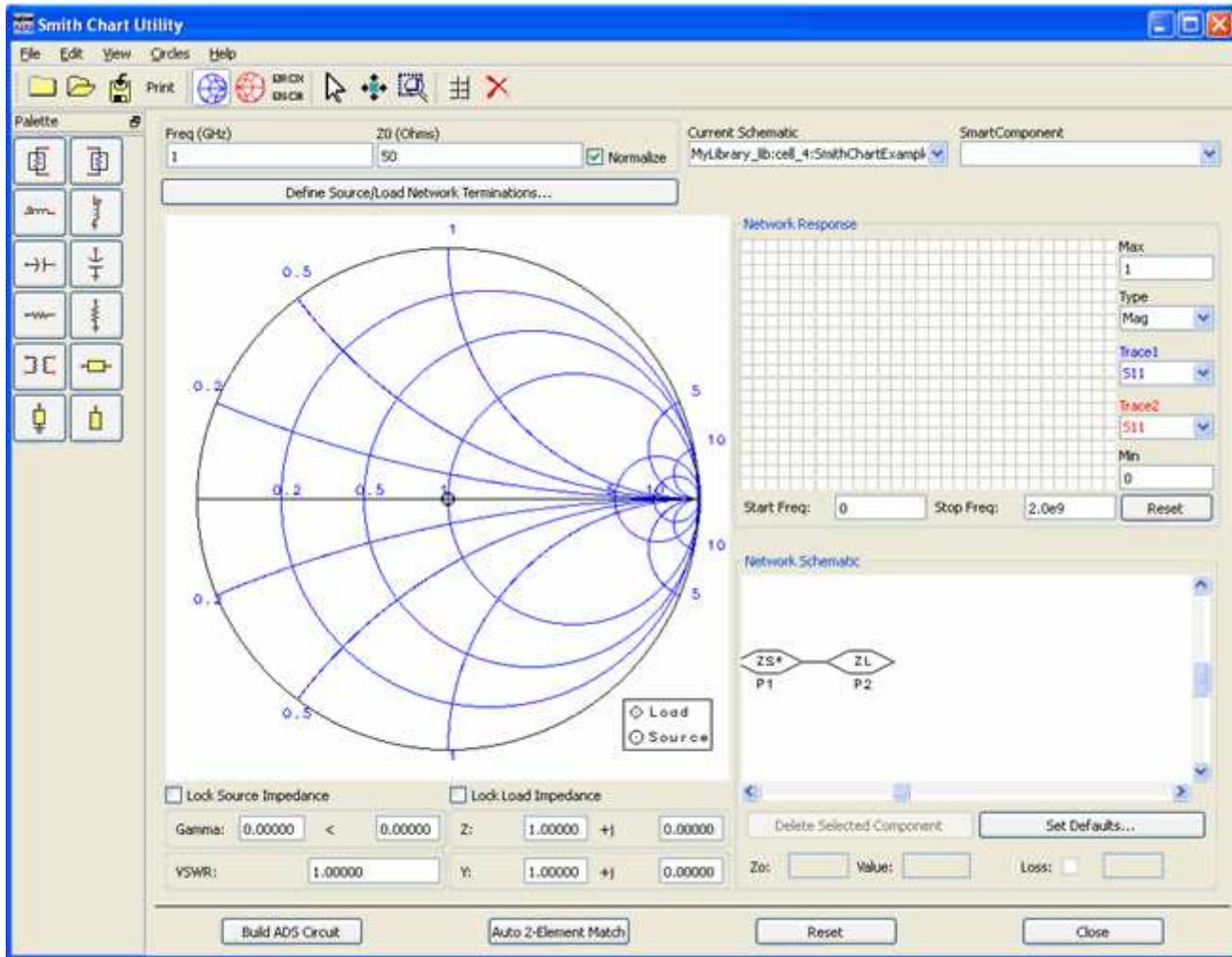
Expand the list under Tools by clicking the _ sign.

Using the Control Window

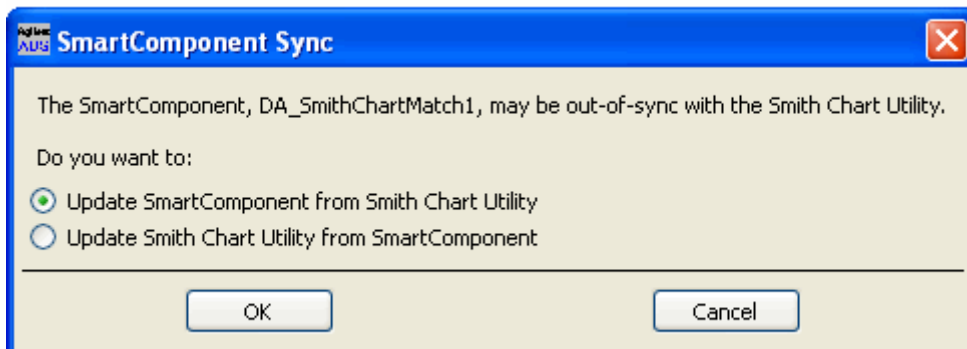
All Utility features are available from the Smith Chart Utility window. The Smith Chart Utility window houses menus, a toolbar, and SmartComponent manipulation controls. The menus and toolbar buttons perform the basic functions of design, delete, and display the SmartComponent palette. The window can be placed anywhere on the screen. Explore the window menus as well to familiarize yourself with the basic Utility capabilities.

The pull down lists at the top of the utility window are designed to help you navigate multiple schematic windows and SmartComponents. You can use the **Current Schematic** drop-down list to select any of the currently opened schematic windows. This field is updated any time Smith Chart Utility window is selected. You can use the

SmartComponent drop-down list box to select any of the SmartComponents on the currently selected schematic window.



When you choose the *DA_SmithChartMatch1* SmartComponent from the **SmartComponent** drop-down list box, the following dialog is displayed:



This dialog allows you to update the selected SmartComponent with the changes made using the Smith Chart utility, or conversely, update the Smith Chart Utility with the

parameters of the SmartComponent. Selecting another component from the drop-down list will update the Smith Chart with the parameters of that component.

To close the Control window:

- Choose **File > Exit Utility** from the Control window menubar. (You can also close the window by clicking the **x** at the top of the window.)
Continue the step-by-step example by [Designing and Analyzing a Network](#).

Designing and Analyzing a Network

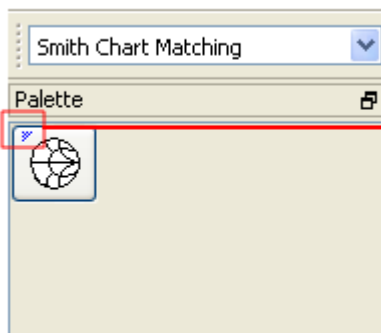
Load and source matching networks for amplifiers can be designed easily using the Smith Chart. Using the Utility follows a normal design flow procedure:

- Select a component needed for your Schematic from the component palette ([Displaying the SmartComponent Palette](#)) and place the component in your Schematic ([Placing Example Component in the Schematic](#)).
- Provide specifications ([Changing SmartComponent Parameters](#)).
- Design and analyze the component ([Designing the Amplifier Using the Smith Chart](#)).

Note
Before starting this section of the step-by-step example, confirm your setup ([Setting Up the Design Environment](#)).

Displaying the SmartComponent Palette

The program contains a SmartComponent palette, *Smith Chart Matching Networks*, that provides quick and easy access to the SmartComponents. A blue accent in the upper-left corner of a palette button indicates the component is a SmartComponent.



Blue accent mark indicates a SmartComponent

You can display the SmartComponent palettes in one of these ways:

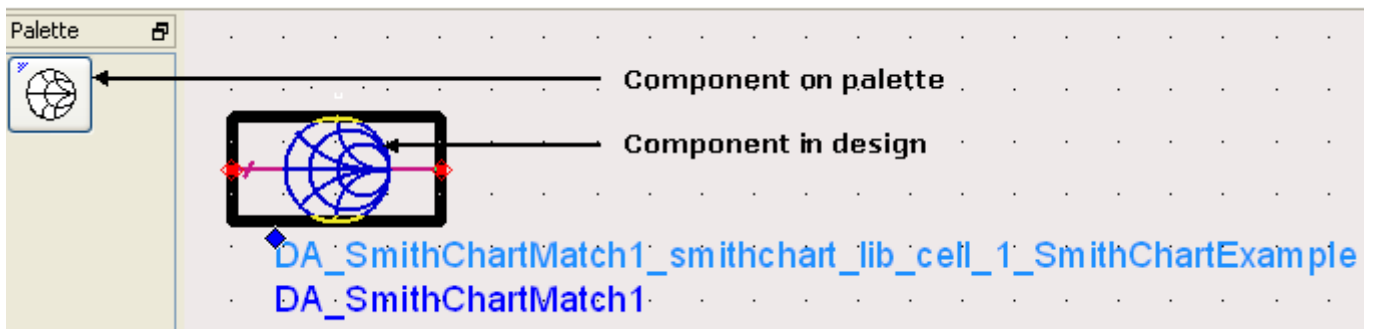
- By clicking **Component Palette** on the Control window toolbar.
- By choosing **View > Palette** from the Control window menu.

- By selecting the **Smith Chart Matching** palette from the **Component Palette** drop-down list box in the Schematic window toolbar (directly above the palette). Continue the example by selecting the Smith Chart Matching palette. The palette displays in the Schematic window.

Placing Example Component in the Schematic

To place a SmartComponent in the Schematic:

- Click **DA_SmithChartMatch** on the component palette to select the component.



- Click within the schematic window to place the component.
 - You can change the orientation of the SmartComponent *before* placement by choosing from the **Insert > Component > Component Orientation** commands or by selecting **Rotate by -90** repeatedly from the schematic toolbar.
 - The place component mode remains active until you choose **End Command** from the schematic toolbar.

Note

When a SmartComponent is placed initially, a temporary component is used to place and specify the parameters for the SmartComponent. This component *does not* contain a subnetwork design. After the utility has been used to design the SmartComponent, the temporary component is replaced with a permanent component. The SmartComponent is renamed to *DA_ComponentName_Library_CellName* and an autogenerated schematic is placed inside the SmartComponent's subnetwork design file. Subsequently, if the SmartComponent parameters are edited, the utility must be used again to update the subnetwork design file.

Designing the Amplifier Using the Smith Chart

During this example, you design the load matching network for this specific amplifier design problem:

Design a microwave transistor amplifier, operating at 3 GHz, to have an operating power gain of 9 dB. The transistor S-parameters are:

$$S_{11} = .641 - j171.3$$

$$S_{12} = .057 - j16.3$$

$$S_{21} = 2.058 - j28.5$$

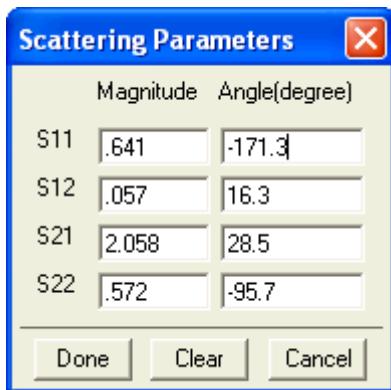
$$S_{22} = .572 - -95.7$$

Changing SmartComponent Parameters

Parameters can be changed directly from the Control window.

To edit the DA_SmithChartMatch component parameters:

1. In the Control window, select the **DA_SmithChartMatch** component from the **SmartComponent** drop-down list. This ensures all changes are referenced to this component.
2. From the Smith Chart window menu, choose **View > S-Parameters** . In the dialog box, enter the S-parameters (magnitude and angle) for this amplifier and click **Done**.



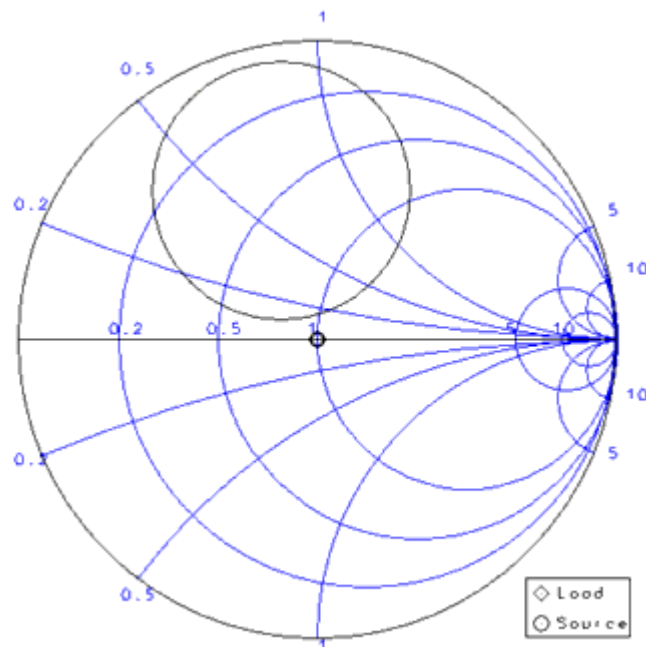
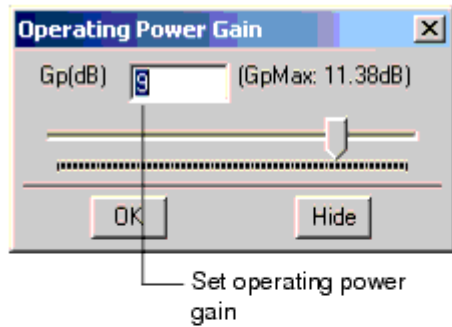
The image shows a dialog box titled "Scattering Parameters" with a close button (X) in the top right corner. The dialog contains a table with two columns: "Magnitude" and "Angle(degree)". The rows represent S-parameters: S11, S12, S21, and S22. Each row has two input fields for the magnitude and angle values. At the bottom of the dialog are three buttons: "Done", "Clear", and "Cancel".

	Magnitude	Angle(degree)
S11	.641	-171.3
S12	.057	16.3
S21	2.058	28.5
S22	.572	-95.7

Displaying the Operating Power Gain Circle

To display the Operating Power Gain circle and its corresponding control box:

- From the Smith Chart utility window menu, choose **Circles > Bilateral > Gp** to open the Operating Power Gain dialog. Either use the slider or text box to choose a **9 dB** circle and click **OK** to display the chart.



Set Frequency

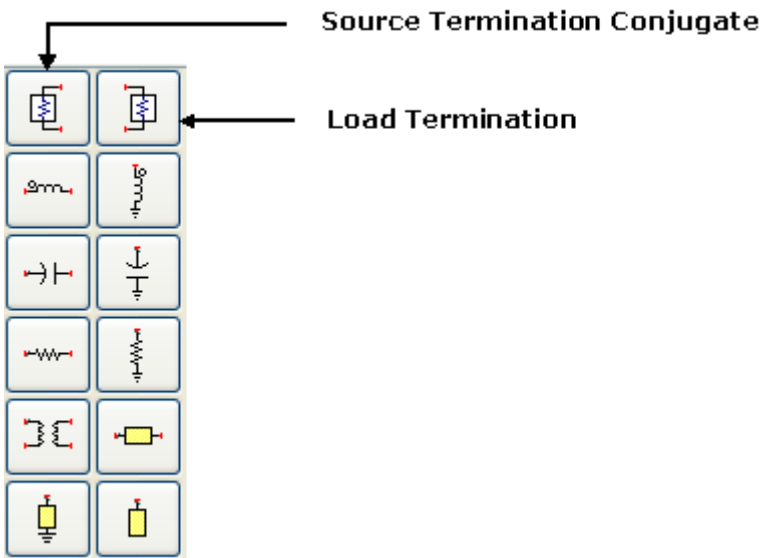
To set operating frequency:

1. Return to the Smith Chart utility main window.
2. In the **Frequency/GHz** field, enter 3 and click **OK** to continue.

Freq (GHz)	Z0 (Ohms)	<input checked="" type="checkbox"/> Normalize
3	50	

Finding Source and Load Points

For this example, we use a 50 Ohm load. The source lies on the power gain circle. First, place the terminations onto their correct locations in the Smith Chart using the Smith Chart Drawing Palette.



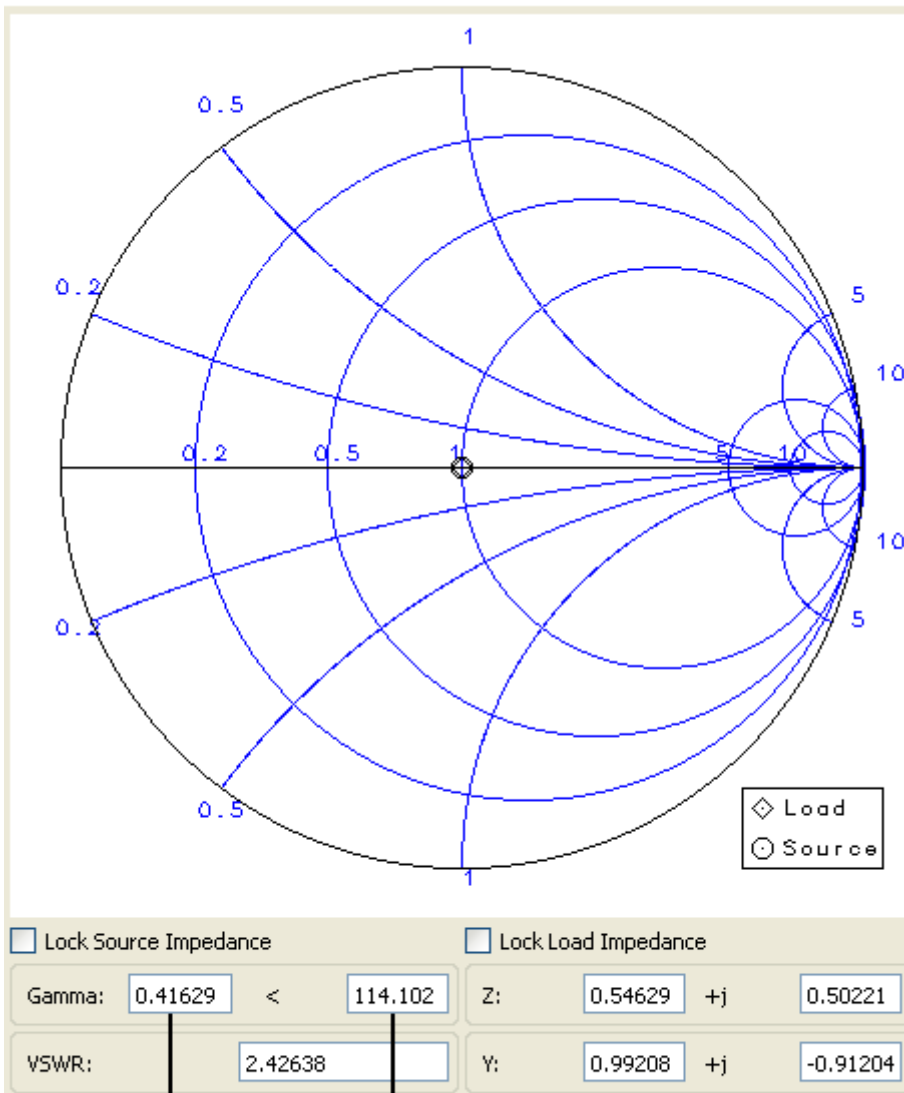
To place the source and load on the chart:

1. Place the source termination by clicking the drawing palette button **Source Termination Conjugate** and then moving the crosshairs until gamma on the status panel at the bottom of the Smith Chart shows approximately .36 - 47.5.
2. Highlight the source termination marker by clicking in the middle of the marker until a pink box highlights the marker. The load termination does not need to be moved since the load termination defaults to 50 Ohm.

Fixing Termination Accuracy

If the source termination is not exactly .36 - 47.5 the source termination can be changed by entering the correct values into the Gamma section of the status panel.

- Make sure the source marker is highlighted before changing values. Next, use the status panel again to conjugate the source marker (by negating the imaginary part of the impedance) for matching purposes.



Conjugate the source marker

Drawing the Matching Network

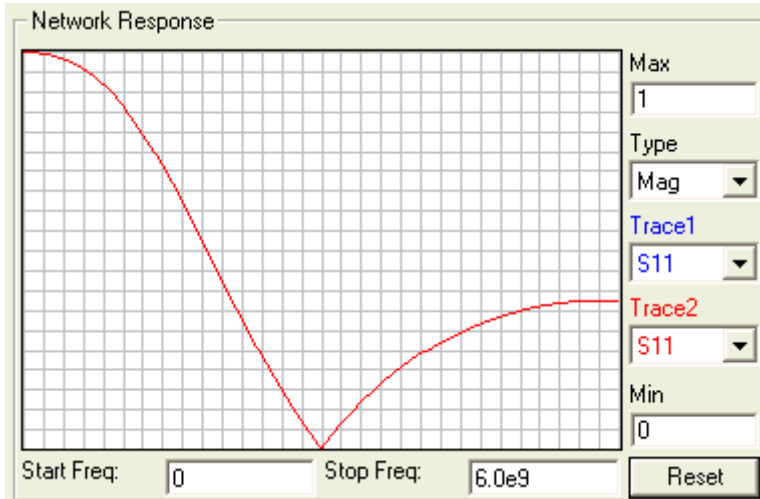
To draw the matching network:

1. Select the **Shorted Stub** component from the drawing palette and click the end point in the vicinity of Gamma .45 - 117.
2. Select the **Line Length** component from the drawing palette and select its end point to be near the source marker. Fine tuning can be done by dragging both green node markers until the end is exactly on the source marker.

Analyzing Frequency Response

To analyze the frequency response:

1. Click the **Reset** button next to the **Network Response** plot to re-normalize the start and stop frequencies.
2. For **Type** select **Mag** and for S-Param select **S11**. Notice that at 3 GHz the magnitude of S11 is zero, implying a good matching network.

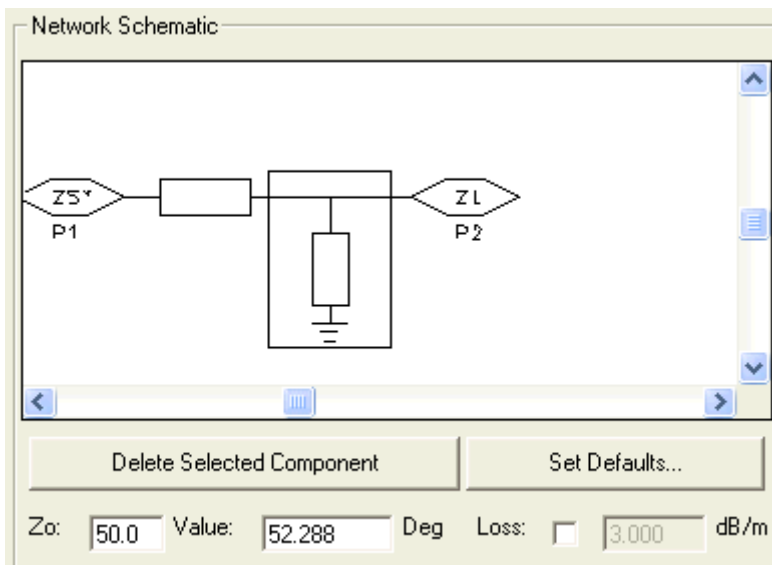


Previewing Matching Network

After building, the network is displayed in the **Network Schematic** box.

To edit the network from the display:

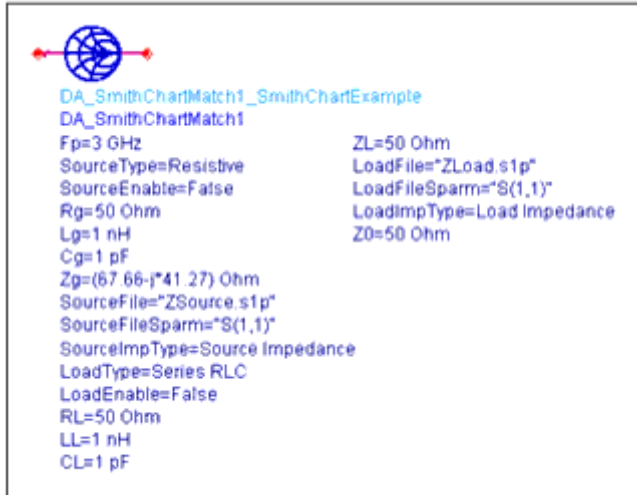
- Click either the **shorted stub** or the **length of line**. Notice that parameter values can be changed here. Also, you can delete the selected component here.



Building the Circuit

To build a circuit into the Smith Chart SmartComponent:

- Click **Build ADS Circuit** at the bottom left of the utility window. The result displays in the Schematic window.

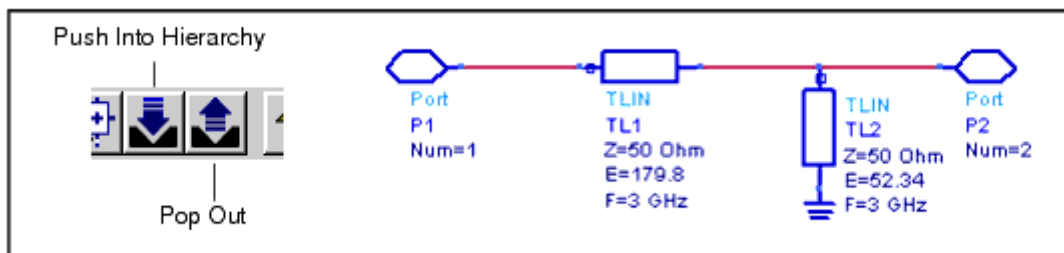


Examining the Matching Component Design

You can look at the details of the autogenerated design inside the SmartComponent's subnetwork.

To examine the component's subnetwork:

- Select the component **DA_SmithChartMatch**.
- Click **Push Into Hierarchy** on the schematic toolbar to reveal the subnetwork.

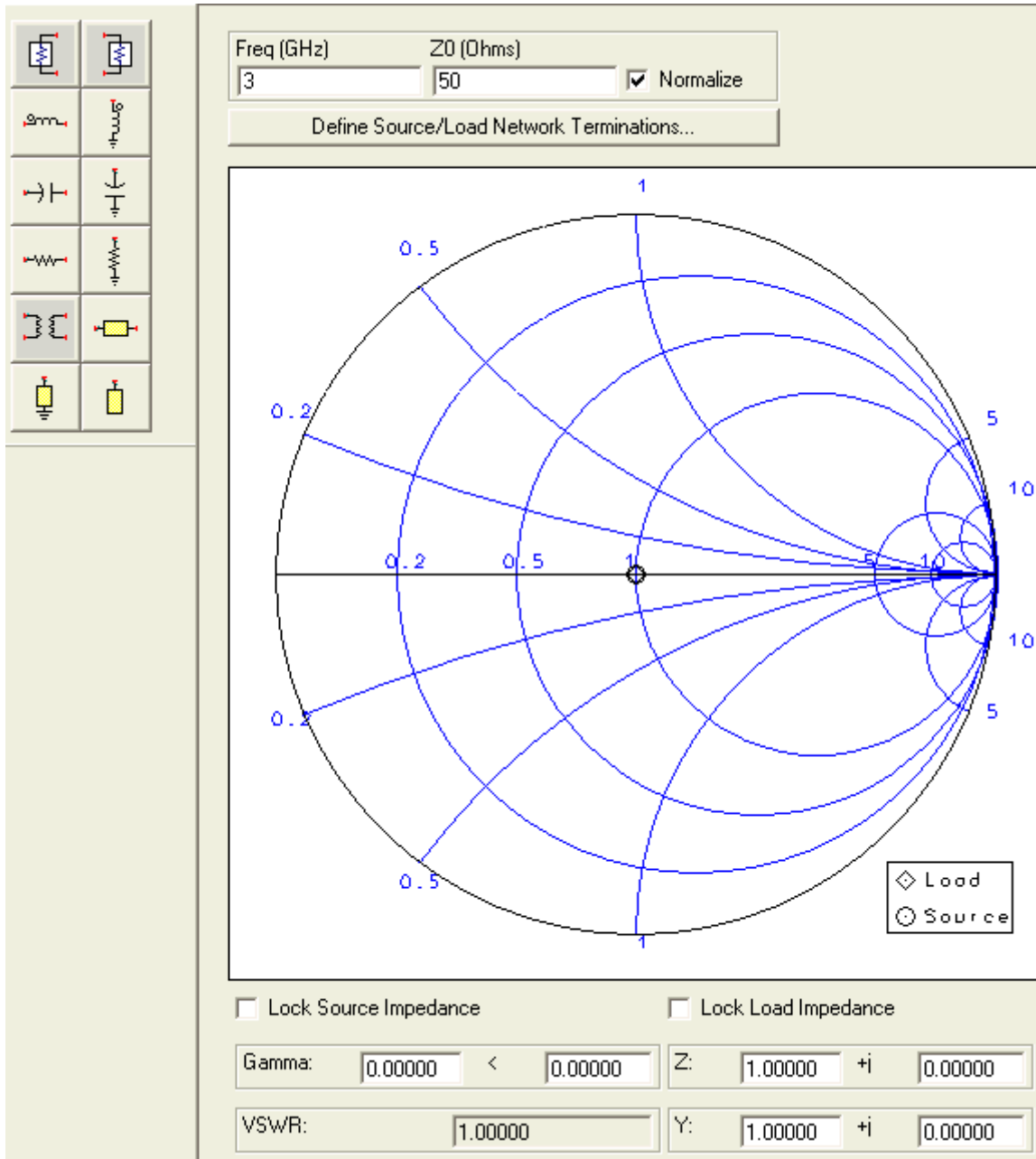


- After examining the Schematic, click **Pop Out** on the schematic toolbar to close the view.

This completes the step-by-step example.

Smith Chart Drawing Area

The Smith Chart Drawing Area is the central focus of the Smith Chart Utility. In this area the full functionality of a Smith Chart can be utilized. Gain, VSWR, Q, and Stability circles can be plotted easily by simply entering S-parameters and then choosing the corresponding menu items. Noise circles can also be plotted in a similar manner. Complex impedance matching is also done in this area by using any of the available passive elements.

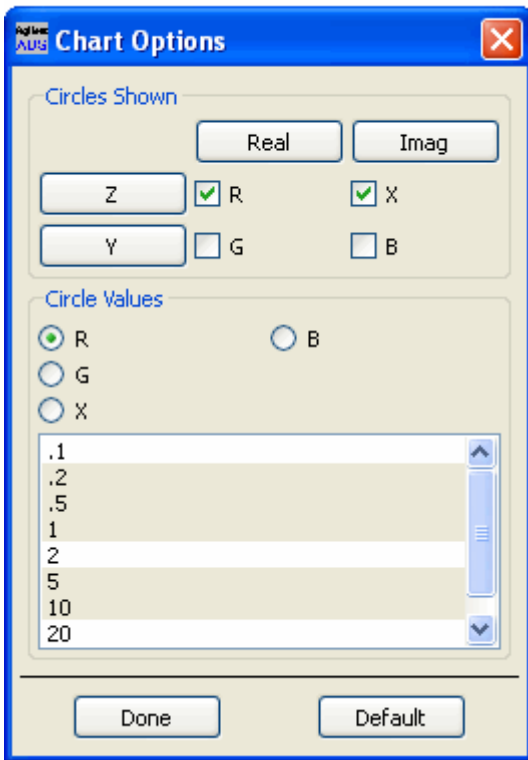


To view a SmartComponent, select the SmartComponent from the **SmartComponent** drop-down list box in the upper right corner of the utility window. Changes made in the Smith Chart Utility affect the selected SmartComponent.

Circle Options

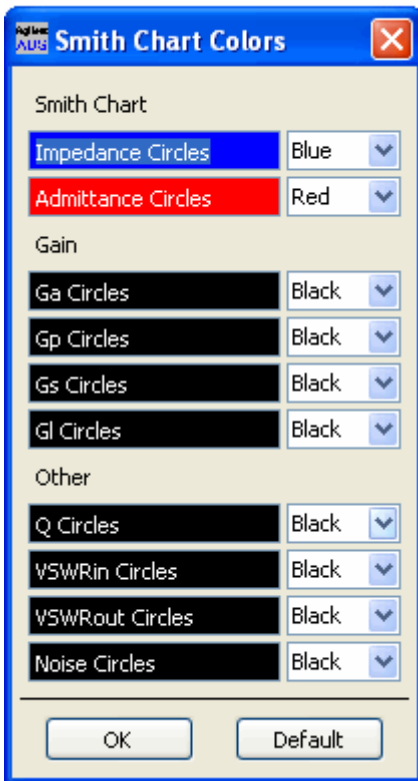
The Smith Chart itself consists of four sets of circles of constant value: resistance (R), reactance (X), conductance (G), and susceptance (B). Using the check boxes at the top of the dialog, these circles can be toggled on and off.

The actual circles plotted are controlled using the bottom portion of the dialog. Selecting **View > Chart Options** in the Smith Chart utility window opens the dialog box.



Circle Colors

Circle colors can be changed on the Smith Chart by choosing **View > Colors** in the Smith Chart utility window.



Components

Twelve components are available to be used on the Smith Chart for matching purposes.

Source Conjugate Termination - Complex point to match to.



Load Conjugate - Complex point to match from.



Series Inductor - Snaps to constant resistance circles.



Shunt Inductor - Snaps to constant conductance circles.



Series Capacitor - Snaps to constant resistance circles.



Shunt Capacitor - Snaps to constant conductance circles.



Series Resistor - Snaps to constant reactance circles.



Shunt Resistor - Snaps to constant susceptance circles.



Transformer - Snaps to constant Q circles.



Line Length - Snaps to circles of constant reflection coefficient magnitude.



Shorted Stub - Snaps to constant conductance circles.

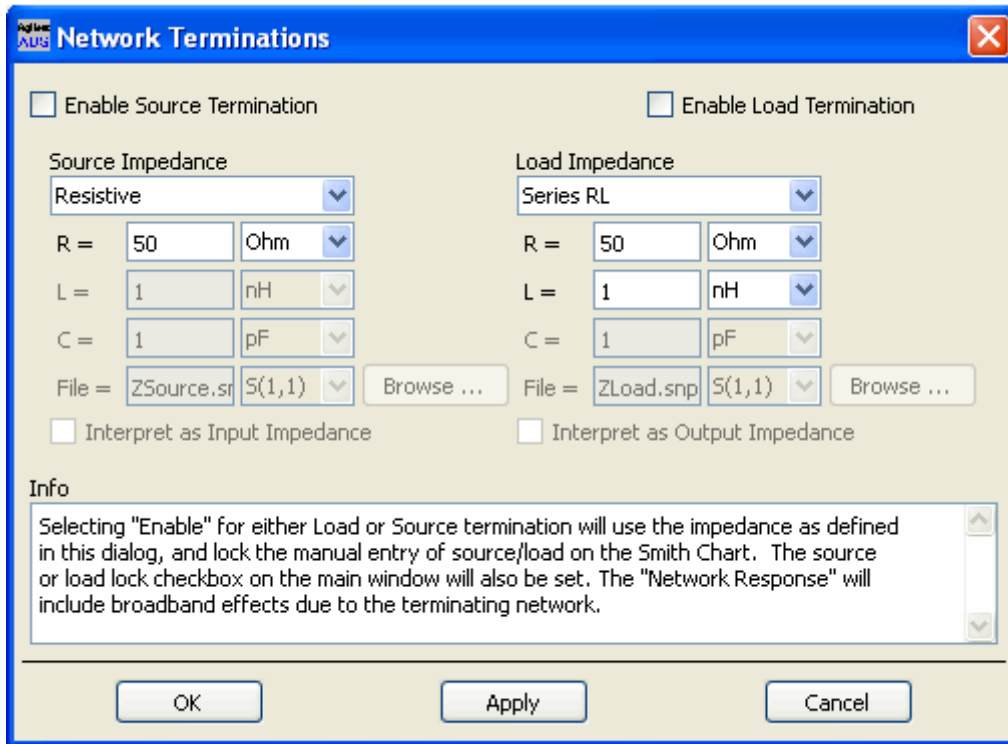


Open Stub - Snaps to constant conductance circles.



Network Termination Definitions

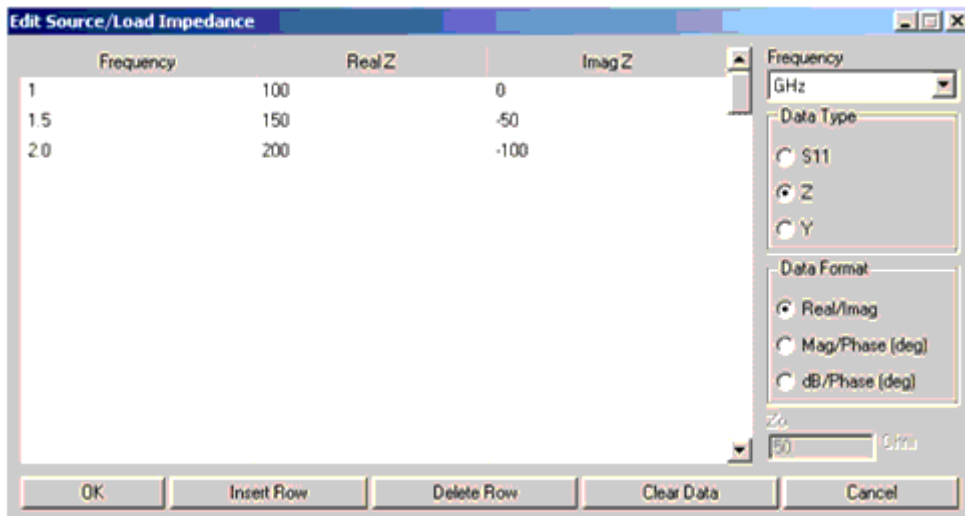
The source and load terminations can be defined as equivalent circuits. To access the Network Terminations dialog box, select **Define Source/Load Network Terminations** in the Smith Chart Utility window.



Network terminations can be input using lumped components networks, complex impedances, and S-parameter files. Usage for these input types is:

- Lumped Component - Choices include Resistive, Series RL, Series RC, Parallel RL, Parallel RC, Series RLC, Parallel RLC, where R = resistance, L = inductance, and C = capacitance. Component values must be specified by the user.
- Complex Impedance - The impedance is interpreted as frequency independent, expressed in the form $50 + j \times 10$ ohms. This input approach is useful for narrowband matching. If the true impedance varies significantly with frequency, better accuracy can be obtained by specifying the termination using an S-parameter file or manually entering the data using the spreadsheet data entry capability.
- S-Parameter File - Any termination can be represented using a file in Touchstone, Citifile or ADS .ds format representing S-parameter data. The impedance can be specified in S, Z, or Y parameters. For details on data file format and creating these files from simulation datasets, refer to *Working with Data Files* (cktsim) in the Circuit Simulation documentation. You can click the **Browse** button to launch a window to select the file.
- Manual Data Entry - The complex impedance (specified as an impedance, admittance, or reflection coefficient) can be entered as a function of frequency manually. When the source or load impedance is specified as Manual Entry, the **Edit** button can be

used to open a spreadsheet that is useful for entering frequency/impedance pairs.

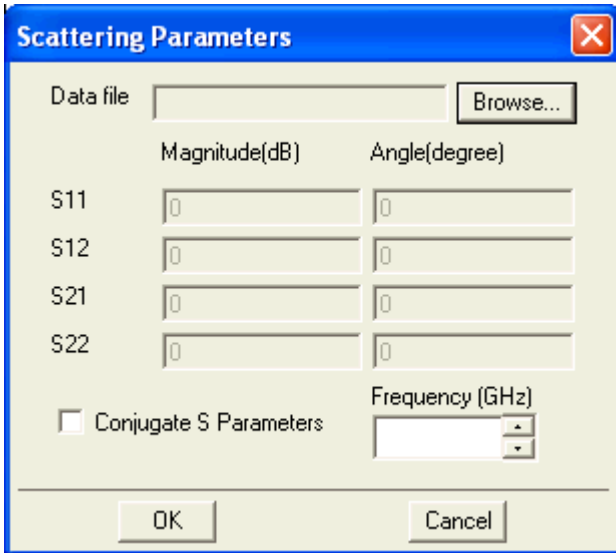


- Interpret as Input/Output Impedance - These options are available for three cases of source and load impedance: complex load, S-parameter file, and Manual entry. Use the Interpret as Input Impedance option to specify that the value you have entered is of impedance looking into the device (S-parameters of the measured device, for instance). Use the Interpret as Output Impedance option to specify that the value you've entered is of impedance looking out from the device (impedance you want to see).

Scattering and Noise Parameters

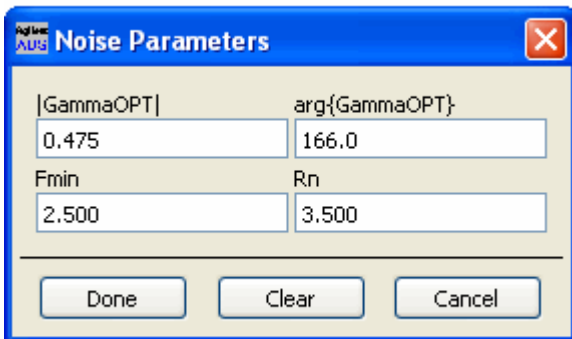
Scattering and noise parameters are an easy way to describe the characteristics of amplifiers and other devices. For a given set of parameters, constant parameter circles can be plotted on the Smith Chart. These constant parameter circles can be used to create matching networks that solve specific design problems.

The Scattering Parameters dialog box can be opened by choosing **View > S-Parameters** from the Smith Chart utility window menu. S-parameters are entered as a magnitude and phase (in degrees).



The Noise Parameters dialog box can be opened by choosing **View > Noise Parameters** from the Smith Chart utility window menu.

Four noise parameters are entered here: magnitude and phase of the optimal source reflection coefficient (GammaOpt), the minimum noise figure (FMin), and the normalized effective noise resistance (Rn).

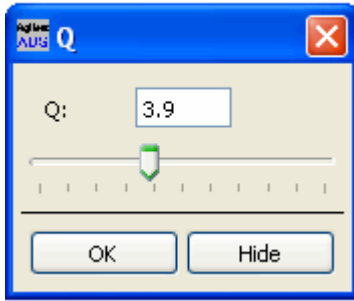


Constant Circles

Constant circles are a locus of points on the Smith Chart that refer to a certain value. For example, a constant gain circle would be all the points that refer to a certain gain. Nine circles can be plotted on the Smith Chart. These circles can be divided into three dependencies.

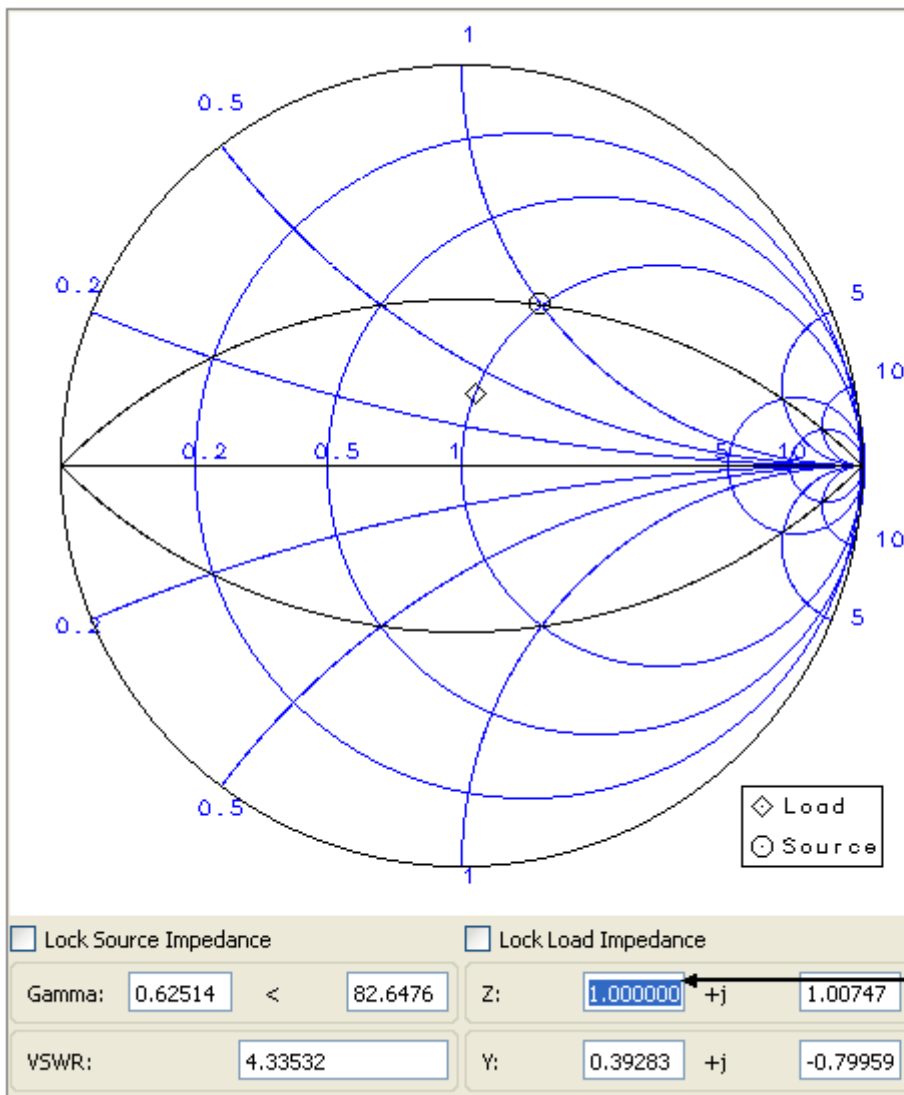
- No Dependence. Circles of constant Q can be manipulated on the Smith Chart without entering any external data.
- Scattering Parameters Dependence. Stability (input and output), VSWR, unilateral (G_s and G_l), and bilateral (G_a and G_p) circles all require valid S-parameter data.
- Noise Parameters Dependence. Constant noise circles require a valid input of noise data.

All circles are either manipulated by entering in a value or by using the slider. Clicking **OK** closes the dialog box but keeps the circle plotted while **Hide/Show** toggles, displaying the circle on the Smith Chart.



Status Panel

The status panel shows point data for the Smith Chart. You can view Z, Y, and Gamma (reflection coefficient) values for any point clicked on the Smith Chart. More exact values can also be entered by selecting the appropriate edit text box and changing the values. Only the current highlighted node is affected by changes made in the status panel.

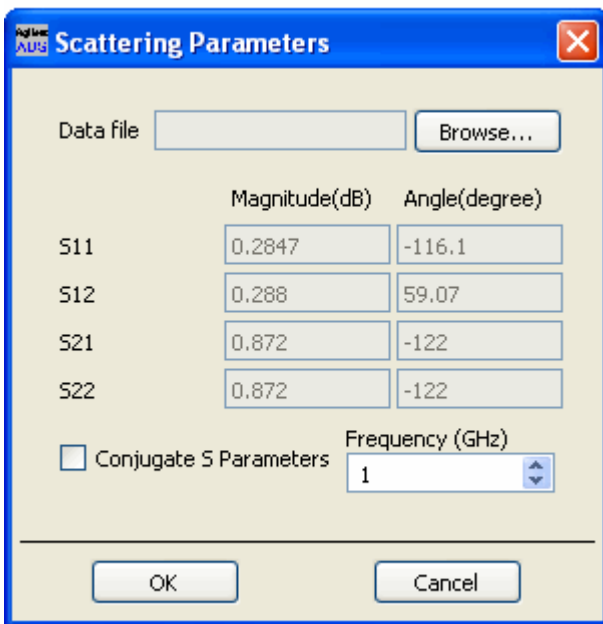


The **Lock Source Impedance** and **Lock Load Impedance** check boxes are located above the status panel. Checking either box makes the corresponding node uneditable.

Importing External Data

The Smith Chart Utility supports three data types for importation: ADS datasets, Touchstone, and Citifiles.

To open the data import dialog box, choose **File > Import Data File** from the utility window. Imported data can only be applied to S-parameter data for the device.



The image shows a dialog box titled "Scattering Parameters" with a blue border and a close button (X) in the top right corner. The dialog contains the following elements:

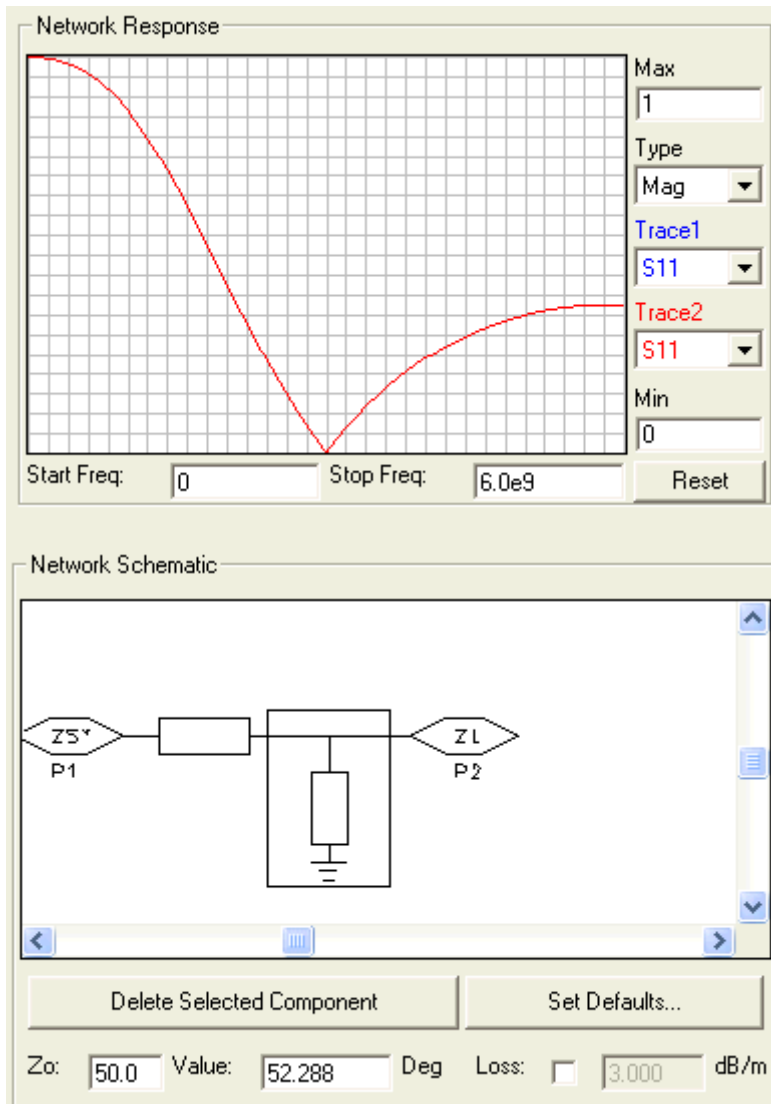
- A "Data file" text box with a "Browse..." button to its right.
- A table with two columns: "Magnitude(dB)" and "Angle(degree)".
- Four rows of data for S11, S12, S21, and S22.
- A checkbox labeled "Conjugate S Parameters" with an unchecked box.
- A "Frequency (GHz)" dropdown menu showing the value "1".
- "OK" and "Cancel" buttons at the bottom.

	Magnitude(dB)	Angle(degree)
S11	0.2847	-116.1
S12	0.288	59.07
S21	0.872	-122
S22	0.872	-122

- **Browse** - Choose a file from one of the available file types to import (Dataset, Touchstone, Citifile).
- **Frequency** - After importing, the S-parameters can be viewed by scrolling through their frequencies.
- **OK** - Closes the dialog box after applying the selected S-parameters.
- **Cancel** - Closes the dialog box without applying the selected S-parameters.

Smith Chart Network Area

The Smith Chart Network Area is a quick and easy reference for viewing your matching network and seeing its performance with the given data. A real-time frequency response is plotted for each change made on the Smith Chart. A network schematic is displayed, showing a preview before the SmartComponent is built.



Network Response

The Network Response (frequency response) area can plot both the magnitude and phase of the S-parameters of the drawn network from the Smith Chart.

- **Start Freq** - Starting frequency point (in Hz) from the left edge of the graph. Default is 0 Hz.
- **Stop Freq** - Stopping frequency point (in Hz) at the right edge of the graph. Default is twice the Smith Chart frequency.
- **Max** - Maximum value at the top edge of the graph. Default is 1 for magnitude

response and 180 for phase response.

- **Min** - Minimum value at bottom edge of the graph. Default is 0 for magnitude response and -180 for phase response.
- **Type** - Chooses plot type, either magnitude or phase.
- **Trace1** - Chooses which S-parameter to plot in blue.
- **Trace2** - Chooses which S-parameter to plot in red.
- **Reset** - Resets the graph to default values.

The view in the frequency response can be changed by either replacing the edge values with values you want or by clicking and dragging a box inside the graph area.



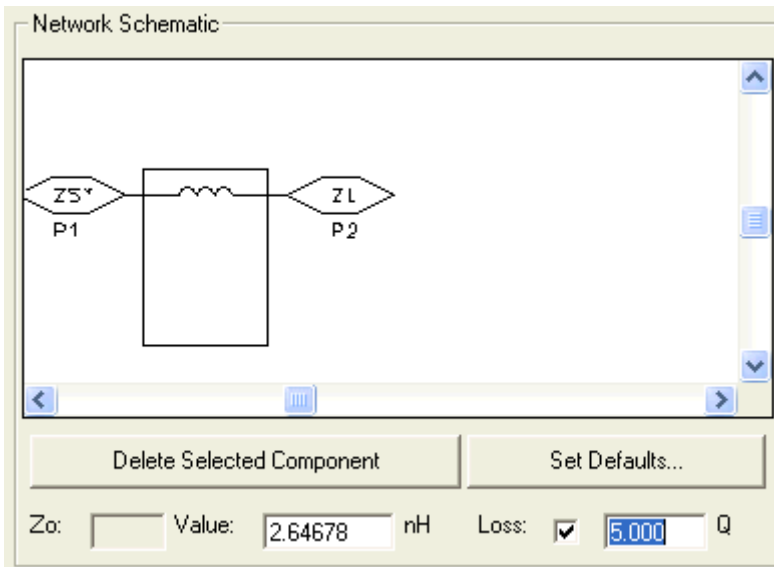
Network Schematic

The Network Schematic area displays a preview of what the SmartComponent looks like after building the circuit. Also, in this area component parameter values can be changed or components can be deleted from the network.

- **Delete Selected Component** - Deletes the selected component from the schematic and removes its corresponding trail from the Smith Chart area.
- **Set Defaults** - Choose default values for Q, loss, and characteristic impedance.
- **Zo** - The characteristic impedance of the microstrip elements (shorted stub, series stub, and length of line).
- **Value** - The component's value (for example, Ohms, Farads, etc.).
- **Loss** - Displays either a component's loss in dB/m or in Q.

Any changes made to the schematic area are reflected on the drawing in the Smith Chart area (see [Changes in Component Parameters Reflect on Chart](#)).

Changes in Component Parameters Reflect on Chart



Defaults

Q
1e9

dB/m
3

Z0
50

Close

Using SmartComponents in Smith Chart Utility

This Utility provides a single SmartComponent representing a matching network. SmartComponents are smart sub-network designs that provide the container for specification parameters and a schematic representation of the design when placed into a design. The utility provides automated design and analysis for these SmartComponents.

SmartComponents can be placed, copied, edited and deleted like other components in the Advanced Design System. The basics of placement, copying, editing and deleting are described briefly in this section.

Note
For help with ADS basic features, refer to the *Schematic Capture and Layout* (usrguide) documentation.

Placing and Editing SmartComponents

The components are placed in the schematic by selecting the SmartComponent from the palette and clicking at the point where you want to place the component in the schematic.

You can display the SmartComponent palette in two ways:

- Open the Smith Chart Matching Utility by selecting **Tools > Smith Chart**. Display the SmartComponent palette by selecting the **Palette** button from the utility window toolbar or by selecting **View > Palette** from the utility window menu.
- Select the **Smith Chart Matching** palette from the Component Palette drop-down list box in the Schematic window toolbar (directly above the palette).

Placing SmartComponents

To place a SmartComponent in the Schematic:

1. In the Schematic window, select the component from the SmartComponent palette.
2. Click within the Schematic window at the location where you want to place the SmartComponent.
 - You can change the orientation of the SmartComponent *before* placement by choosing from the **Insert > Component > Component Orientation** commands or by selecting **Rotate by -90** repeatedly from the schematic toolbar.
 - The place component mode remains active until you choose **End Command** from the schematic toolbar.

Changing Position and Orientation

A SmartComponent is moved by dragging it to any location in the Schematic window.

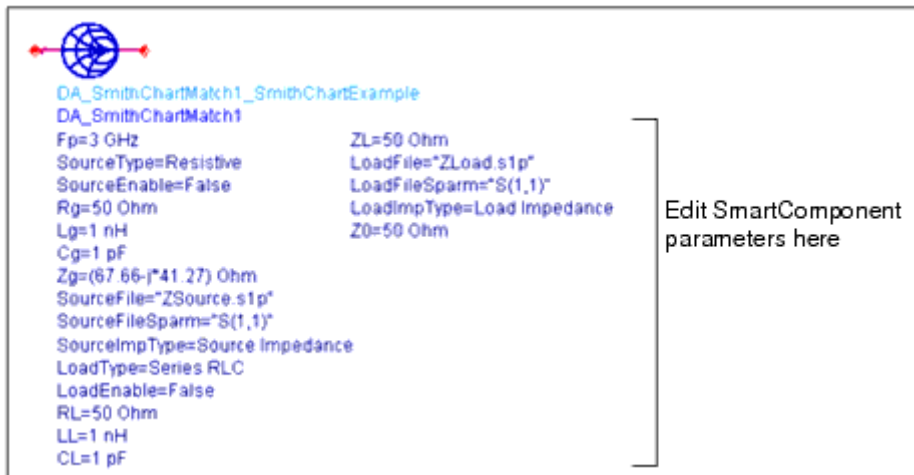
To change the component's orientation:

1. Select **Edit > Advanced Rotate > Rotate Around Reference** from the Schematic window or select **Rotate Items** from the toolbar.
2. Click the SmartComponent you want to use.
3. Rotate the component. The rotate mode remains active until you select **End Command** from the toolbar.

Editing SmartComponents

Specifications of the SmartComponent are entered directly on the Smith Chart Utility Control window. You can also modify the specifications in one of these ways:

1. Click the SmartComponent parameters in the schematic window and change them (see *The DA_SmithChartMatch Component (dgfilter)*).
2. Double-click the SmartComponent to open a dialog box containing all parameters.



The DA_SmithChartMatch Component

The SmartComponent schematic can be viewed by pushing into the SmartComponent's subnetwork. See *Examining the Matching Component Design (dgutil)*.

A SmartComponent subnetwork is empty until the schematic is generated (see the note in the section *Placing and Editing SmartComponents (dgfilter)*).

Copying SmartComponents

SmartComponents can be copied within a schematic or to another Schematic window.

Copying Within a schematic

To copy a SmartComponent to the same schematic:

1. Click the SmartComponent to be copied.
2. Select **Edit > Copy** and then **Edit > Paste** from the schematic window.
3. Click where you want the copy placed.

Copying Between Schematic Windows

To copy a SmartComponent to another schematic:

1. Click the SmartComponent to be copied.
2. Select **Edit > Copy** from the Schematic window.
3. Display the schematic window you want to copy the SmartComponent to.
4. Select **Edit > Paste** to copy the SmartComponent to the Schematic.
5. Click where you want the component placed.

Copying a SmartComponent as a Unique Design

Initially, all copied SmartComponents refer to the same SmartComponent design. When the Smith Chart Utility is used to perform a design operation, the Utility transforms each copied SmartComponent into a unique SmartComponent design. A design operation is accomplished from the Utility Control Window.

Deleting SmartComponents

SmartComponents can be deleted from a schematic like other components, but completely removing a SmartComponent's files requires the actions described here.

Deleting from Current schematic

A SmartComponent can be deleted from a schematic in one of these ways:

- By selecting the component and pressing the **Delete** key.

- By selecting **Delete** from the toolbar.
- By selecting **Edit > Delete** from the schematic window.

**Note**

This procedure does not remove the SmartComponent files from the Workspace. To delete files from the Workspace, see *Deleting from Current Workspace* (dgfilter).

Deleting from Current Workspace

To delete a SmartComponent and all associated files from your Workspace:

1. In the Schematic window, select the SmartComponent.
2. In the utility window, select **Edit > Delete SmartComponent.** or on the toolbar, click **Delete.** This deletes the SmartComponent from the current schematic and removes all of its files from your Workspace. The SmartComponent delete mode remains active until you select **End Command** from the schematic toolbar.

Deleting Manually Using File System

You can use your computer's file system to delete a SmartComponent by deleting the appropriate files in the respective library of a Workspace. Delete files that start with *DA_* or *SA_* , containing the SmartComponent title, and end with *.ael*, *.atf*, or *.wrk* .

Using SmartComponents as Standalone Components

After SmartComponents are designed and tested, they can be used as standalone components. The Matching Utility is not needed to use them in new designs unless you wish to modify or analyze them. When using the SmartComponent in a design, however, the power supply pins (Vdd, Vcc, Vp, Vm) must be connected to a DC voltage source whose voltage level corresponds the parameter setting.

Using an Existing SmartComponent Within the Same Workspace

To use an existing SmartComponent within the same Workspace:

1. Open the Component Library window by selecting **Insert > Component > Component Library** from the Schematic window or **Display Component Library List** on the toolbar.
2. Select the Library name under **All Libraries** list at the left of the Component Library window. Available components are listed in the Components list at the right of the Component Library window.
3. Select the SmartComponent in the **Components** list.

4. Place the SmartComponent into your schematic by clicking in the Schematic window at the location you wish to place. The insert mode remains active until you click **End Command**.

Using an Existing SmartComponent in Any Workspace

A library of predesigned reusable SmartComponents can be created by placing the reusable SmartComponents in a Workspace. This Workspace can be included in any Workspace and its SmartComponents can be accessed using the Component Library.

To use an existing SmartComponent in any Workspace:

1. Open the Workspace where the SmartComponent needs to be inserted.
2. Open the Library in the Workspace by selecting **File > Open > Library**.
3. Open the Component Library window by selecting **Insert > Component > Component Library** from the Schematic window or **Display Component Library List** from the toolbar.
4. Select the Library name under **All Libraries** list at the left of the Component Library window. Available components are listed in the Components list at the right of the Component Library window.
5. Select the SmartComponent in the **Components** list.
6. Place the SmartComponent into your schematic by clicking in the Schematic window at the location where you wish to place the component. The insert mode remains active until you click **End Command**.