

Spellman News

FALL 2015

A PUBLICATION FOR THE ALUMNI/AE, PARENTS AND FRIENDS OF CARDINAL SPELLMAN HIGH SCHOOL

2014-15 Annual
Report Inside

Mr. Daniel O'Keefe appointed President and Principal of Cardinal Spellman High School

The Board of Trustees of Cardinal Spellman High School are pleased to announce that Mr. Daniel O'Keefe has been appointed President and Principal of Cardinal Spellman High School by vote of the school's Board of Trustees at the annual June Board Meeting.

Mr. O'Keefe joined Spellman as Principal in September 2011. "He has done an outstanding job over the past four years," said Board Chairman, Daniel O'Connell, Spellman Class of 1972 and CEO of Vestar Capital Partners. "During his tenure, Spellman has made significant progress in the realms of academic and extracurricular programs, enrollment, improved college advisory and placement, long term strategic planning and fundraising," continued Mr. O'Connell.

In his additional capacity as President, Mr. O'Keefe will focus more of his time and energy on advancement, working closely with Ms. Jennifer Rivera '96, Spellman's Vice President of Advancement, with the goal to continue to build the financial resources available to the school. Notably, last fall, Mr. O'Keefe garnered national attention when he ran 100 miles around the school's track (400+ laps) to help raise money for student sports and activities programs. This community building initiative brought in more than \$130,000 for the programs.

The Spellman Board of Trustees and entire school community congratulate Mr. O'Keefe on this important promotion and wish him all the best for the future.



Daniel O'Keefe
President/Principal



Spellman's Golf Outing *The Best Yet!*

Under sunny skies and cool temperatures, Cardinal Spellman High School's annual Alumni and Friends Golf Outing was held June 29th at Knollwood Country Club in Elmsford, New York. More than 200 people attended the event helping raise over \$35,000 for the student scholarship fund—a new event record! The golfers enjoyed lunch on the patio, a putting contest and an open driving range. Before heading out at the shotgun start, the sounds of the bag piper could be heard signaling the start of the day. Many tried their luck at winning an assortment of prizes at designated holes, including a new car.

Special Guests Dwight
"Doc" Gooden and Carl Banks

Trudy Keane with Coach Jane Lacey Morris '71, the
2015 Sequere Deum Honoree, and Dan O'Keefe

Later in the day, a cocktail hour with silent auction took place at the clubhouse. Dinner guests were entertained by Master of Ceremonies (MC) Marcus Solis '87, Reporter for WABC-TV Eyewitness News. Marcus introduced Science faculty member, Trudy Keane, who presented the "Sequere Deum" Award to this year's honoree, Jane (Lacey) Morris '71, Girls' Athletic Director and Coach of the Spellman Girls Varsity Basketball team. Coach Morris was honored for her 30+ years of service to Spellman students and her induction into the New York State Basketball Coaches Hall of Fame this past spring.

(Continued on pages 2-3)



Daniel O'Keefe
President/Principal

Dear Alumni and Friends,

As we begin the new school year, I am honored to now serve as both President and Principal of Cardinal Spellman High School. There will be many more responsibilities, but there will also be countless more opportunities for Spellman. I look forward to an incredible year as I share this new role with all of you.

I wish to thank our retired President, Fr. Trevor Nicholls, for his examples in faith, leadership, and service. I hope to continue to

lead Spellman on the path to even greater achievements. I pray for continued blessings on Fr. Trevor as he takes on his new leadership role at St. Catharine's in Pelham.

I also thank the Board of Trustees for their trust in my ability to lead. Spellman is blessed with an incredible Board, one that is the role model for other Catholic schools. Under the leadership of Board President, Mr. Dan O'Connell, Class of '72, we have embraced our financial independence from the Archdiocese of New York and established Spellman as the premier Catholic high school in New York.

Spellman continues to prosper, even as the diocese continues to close schools. We graduated 307 seniors in June of 2015. We are blessed with an incoming class of Freshmen that is over 400 strong. What an incredible statement to our success. The graduating class of seniors set a Spellman record for college scholarships, receiving over \$33 million. That exceeds our previous record of \$30 million set last year. Congratulations to our newest alumni on your amazing achievement!

On a sad note, the passing of legendary coach, Fred Calacone was a tremendous loss to the Spellman community. Fred's impact on Spellman was immeasurable. I recently saw first-hand just how much Spellman alumni loved Fred. I was honored to spend a good portion of the Annual Golf Outing with Fred. We spoke with many of the alumni who were golfing, so many of whom were coached by Fred. The reaction was almost always the same as we drove our golf cart from hole to hole. The golfers had hugs for Fred, shared fond memories of the ballfield, and made promises to keep in touch. Fred was such a vital part of the Spellman community. I am sure that many of you share my great sadness at his loss but treasure the fond memories of him.

One of our many upcoming initiatives will be a fundraiser specifically dedicated to the Emmaus Retreat Program. So many Spellman graduates have been blessed by their participation in Emmaus. The personal relationship with Christ, that is central to our mission, has been enhanced by this program. This fall we begin with the 117th Emmaus Retreat. Furthermore, Fr. Peter Pilsner will celebrate his 100th Emmaus in the Spring of 2016 at Emmaus 122! What a wonderful opportunity for the Spellman community to join together in prayer. A special "Day of Prayer" will be celebrated in the Student Chapel on November 6, 2015 in order to highlight the Emmaus Program. Please join us. Further details will be forthcoming.

Finally, I would like to thank all of you for your support. Whether it be a simple prayer, financial gift, or sharing your talents, you make a difference in the lives of over 1,400 students every day. Spellman continues to create the leaders of tomorrow. You are an essential part of that mission.

I look forward to the challenges and blessing that the future holds for all of us.

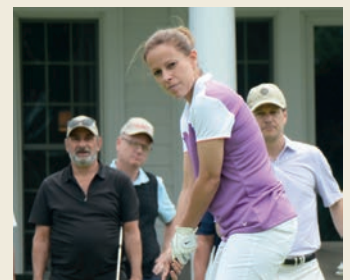
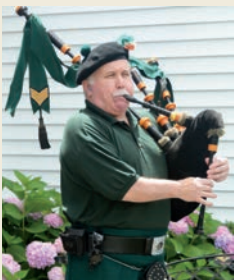
God bless,
Dan O'Keefe

Spellman's Golf Outing *(Continued from page one)*

This event benefits the Golf Outing Scholarship Fund. Scholarship recipient Arnold Baltazar '15 relayed to the crowd the difference this award made to him and his family. "My family couldn't afford to continue my Spellman education and I was supposed to transfer to a public school after freshman year, but I was blessed with this scholarship and was allowed to finish three more years. Thanks to you, I will attend Stony Brook University this fall and when I'm able, later in life, I promise I will give back to Spellman," stated Arnold. Now that Arnold has graduated, the new Golf Outing Scholarship recipient, Christopher Vitale '18 was introduced and also thanked attendees, "I'm thankful to be here at

Cardinal Spellman where I can get a great education and enjoy so many of the teams and activities that make Spellman more than a school and more like a family."

This year's golf outing included a special guest player, Carl Banks, a former linebacker for the New York Giants that won Super Bowls XXI and XXV. At the dinner that followed, special guest Dwight "Doc" Gooden, three-time World Series Champion pitcher for the New York Mets and Yankees, spoke to attendees about his days playing ball in New York. The golf committee, under the leadership of Liam McLaughlin '85, along with the players, sponsors, and dinner attendees, all contributed to a highly successful and enjoyable event.



Spellman Alumni Return for Career Day

This past April, Spellman hosted its biennial Career Day for the Junior and Senior classes. More than 50 alumni/ae participated in the event, which was also attended by the faculty and administration. Grace (Rossello) Noone '83, who is currently a reporter for News 12 Westchester, served as Mistress of Ceremonies and Sr. Carol DeAngelo '64 – Director of Peace, Justice, and Integrity of Creation for the Sisters of Charity provided the invocation for the morning. This year's panel of keynote speakers featured an all-star cast consisting of Susan Cardillo '88 – Curator at the Central Park Zoo; Michael Miller '83 – Corporate & Educational Leadership Speaker; Sgt. John O'Hara '78 – NYPD Aviation Unit; and Sr. Maria (Eva) Silva '94 – Dominican Sisters of Mary Mother of the Eucharist.

Following the presentations, students were provided with the opportunity to personally meet their predecessors in the gymnasium – exposing them to professionals in various fields including law enforcement, the armed services, healthcare, marketing, medicine, law, banking, education, engineering, religious vocations, computer



technologies, and media communications. For over an hour students eagerly asked questions and obtained information from the alumni. After dismissal, participants and faculty met for brunch to discuss the day, reminisce about the past, and learn about current Spellman students.



SPECIAL THANKS TO THE GOLF OUTING COMMITTEE

who work tirelessly to ensure a successful event!

Liam J. McLaughlin '85, Chairman
Joseph Alfano
Lou Brescia
Fred Calaicone
Susan Cardillo '88
William Cawley,
Joe DeFazio '71
Tom Delaney '66
Dan Eagel
John Endres '71
John Farrell
Frank Granito, Esq. '77
Robbin Harrison '81
Elizabeth (McKiernan) Healy '84
Frank Leone '77
Terence J. McCormack '63
Phil McGrath '74
Kieran McTague '76
Dan O'Connell '72
Dave Oniffrey
Fred Opper
Donald Van Bomel
Robert Vessecchia '83

WE THANK OUR EVENT SPONSORS

Ultimate Cardinal Sponsor
Dan O'Connell '72 & Vestar
Capital Partners

Lunch Sponsor
Frank Granito '77

Corporate Sponsor
Konica Minolta

Registration Sponsor
Frank Leone '77

Faculty Sponsor
Curtis Johnson '71

Beer & Beverage Sponsor
Spellman Alumni Association
Flynn & O'Hara Uniforms, Inc.
Michael E. Costa, CPA '70

Putting Contest Sponsor
DHO Travel—Sean and Elizabeth
Healy '84

Hole Sponsors
Susan Cardillo '88, Marco
Castaldi '88,
Dominic Cipollone '88, and Jim
Lavoie '88

Church of St. Raymond—Msgr.
John Graham '66
Tom Delaney '66—In Memory of
Kevin Kitson '66
John Endres '71 and Green Patch
By Cold Mix Manufacturing
Corp.
McLaughlin '85 & Zerafa, '89 LLP
Liam McLaughlin—Yonkers City
Council President
Hailey Motel Management Corp.
Joan and Rich Nardi '72
Peter Luongo & National Gear
and Piston
Spellman JV & Varsity Baseball
Spellman Parents' Association
Frank Granito '77
Will Cawley, Spellman Football &
Softball
O'Connor Davies, LLP
Ranger Supply Company
ARCADIS, Inc.
Hudson Valley Bank
Robert Vessecchia '83 &
Signature Bank

Gifts in Kind
Nick Mancini '10

B.I. Ink, Inc.
McLaughlin '85 & Zerafa, '89 LLP
Sean Doherty '85
Terence McCormack '63
Rosemary Campion, Blackbird
Creative Services
Frank Leone '77
Joe Mitchell, Jostens
Richie Popp '68
Steve Donohue '74
New York Yankees
Rafael Collado '72
Phil McGrath '74
Therese McNicholas '84
Donald Van Bomel
Fred Santore
Troy Benjamin '91
Dawn DiGiacomo
Marie Murray
Lesley Gaudio '04
Derek Jeter's Turn 2 Foundation
Susan Cardillo '88 & WCS
Frank Leone & Dot Gen
Will Velez & Accenture
Charles Wande '99 & NY Jets
NY Knicks
Hudson Valley Renegades
Acura of Westchester

The Cardinal's Players Strike Again!

Beauty and the Beast is a Hit!

Continuing of the tradition of putting on absolutely phenomenal productions, the Cardinal's Players outdid themselves this year with their rendition of Disney's *Beauty and the Beast!* The acting, vocals and choreography precision rivaled that of a Broadway headliner.

The entire Spellman community would like to thank the cast and crew of the show for all of the hard work that they put into making each performance truly unforgettable. We would also like to give special thanks to our multi-talented Director and visionary Ms. Nikita Francois. Additionally, playing crucial roles in the overall success of the show were: Technical Director & Set Build/Design - Meghan McCaffrey, Musical Director - Robert Lindner, Moderator - Mila Bello '00, Choreographer - Gabrielle Mongiovi, Ticket Sales Coordinator - Jaclyn Cullen '95 and Program Designer - Elizabeth Healy '84. Thank you all for your dedication to making this production a hit!



The Miracle Worker Scholarship

This year's "Miracle Worker" Scholarship was awarded to two outstanding students, Jared Martell '15 and Ruby Melendez '15. Established by alumnus Tom Scarangelo '75, in honor of his sister, alumna Mary Ann (Scarangelo) Tighe '66, this scholarship commemorates Mary Ann's portrayal of Annie Sullivan, teacher of Helen Keller, in the Cardinal's Players' 1964 production of "The Miracle Worker". Both students have been involved with the Cardinal's Players for 2 or more years.



Spellman Students Accepted into the NexGen Theater Internship Program

Spellman students Ashana Neale '16, Destinee Pierre '16, Tiffanie Morales '16, Vanessa Deveaux '16, and Jessica Baldoria '16 will be participating in the Classic Stage Company's "NextGen" program beginning in September. Destinee and Vanessa return for their second year in the program while Ashana, Tiffanie, and Jessica are new to this stage.

This program gives young aspiring thespians the opportunity to become an integral part of an acclaimed Off-Broadway company and experience theatre as they never have before! Classic Stage generally focuses on plays of the past, but also leaves room for incorporating artistic innovation of the present and future. Recruiters look for teens with strong leadership capabilities and an eager desire to



(left to right) Ashana Neale '16, Destinee Pierre '16, Tiffanie Morales '16, Vanessa Deveaux '16, Jessica Baldoria '17

learn about all aspects of professional theater – to no surprise our Spellman students fit this criteria. Congratulations are in order to these gifted young ladies.

50th Anniversary Celebration - Class of 1965

Reflection by Daniel Marti '65 *Chairman, Reunion Committee and Class of 1965 School President*

In reflecting on the Class of 1965-50th Anniversary celebration of graduation from Cardinal Spellman High School (Bronx, New York), the words, "Hope is Eternal" joyfully continue to ring as if they were the Bells at St. Patrick's Cathedral, in the days of our namesake, Francis Cardinal Spellman!

We, the intrepid pioneers, the freshman class of 1961, couldn't be more logically and emotionally taxed, about who we were then and perhaps what we are today, when measured by 300+ alumni life-adventures. The date, June 13th 1965, became one defining moment in our lives, and most of us accepted the pomp and circumstance as the right of passage. Yet when 50 years becomes encapsulated within a reunion weekend spanning 96 hours and 2 locations, divided by two-thirds of a century of time on the planet, a multi-day, multi-venue celebratory event, the occasion morphs into something deeper in the appreciation for humanity. The compression of time and circumstance entered and lingers in our soul. We share it with you today, our sisters and brothers of the "Spellman Nation"!

The volunteers, spending the better part of the past year researching, planning, evaluating and producing an event worthy of the people that inspired it, are the essence of what we became at CSHS. In Spellman tradition, we reserve the designation "Spellmanite" as folks who simply work harder, give up ego so that others can succeed, enjoy a salty sense of humor, are dedicated, open, unselfish and lest we forget, intellectually superior!

Be it known, that the following "Spellmanites" guided our efforts towards a "celebration of life" in the form of a 50th reunion that can only be described as "joyous": John Baker - Researcher, Frank Cardaci - Graphic Designs, Literature and Mementos, Linda Delgado - Contracts and Logistics, Albert & Vita Lamperti - Research,

Archives, Janet Salerno - Lead Archivist (partnered with Jim Smyth to complete the exhibit) Philip Velázquez - Chief Financial Officer.

As young intrepid pioneers of the Cardinal Spellman High School experience, and at that time, a co-institutional experiment, we had brick 'n mortar, but no tradition. The idea of hope, which brought generations of immigrants to America's shores, lived in us. Why then, did us "kids" of superior intelligence, gamble on a future without the underpinnings of a past? Why not take the ride through the Preps or Bronx Sciences, where there was an established history of success and recognition? Accepting the admission to Cardinal Spellman High School, every individual made a decision to put their skills and dreams on the line. These "kids" along with all 53 graduating classes are what is now known as the "Spellman Nation"!

Pass no one in the "school of life" without extending your hand and then spend time to learn who these folks truly are. Defend against the bullies. Fight hard to let those that matter be protected and loved. Make no assumptions. Always do your best. Some days, your best will not be good enough but if you do your best, there are no regrets. Old resentments are a poison you drink. Investigate and question. There is a consensus that we wished we had learned much more about each other during our time together! Time will pass quickly and after graduation life pulls you in every direction.

HOPE with the help of others. Put your hand out and press the flesh! This is the learning, this greater humanity we carried away at the end of our reunion. We received a greater appreciation for what we are today because who we were yesterday. You see, hope is not only eternal but it is contagious!

See website for more photos!



Reflection

by Janet Salerno D'Arcangelo '65

My first thought when I heard that our high school was having a fiftieth graduation celebration, was to say, "I am sorry to anyone whose feelings I hurt, seemed to ignore, or otherwise offended." The host of the reunion said, "Janet that was fifty years ago. Don't forget that we were all teenagers then!" We came to revel in the present.

We came to Party (or Par-tee) as someone said. Everyone danced to the oldies.

There was only joy on our Facebook pages. Classmates, who couldn't attend, wrote with sincerity. We reminisced about those not located. We grieved our deceased. We cheered our veterans. I immediately righted my thinking to the most memorable good times, moments shared, clubs, and the special attributes of a special community. I scoured the yearbooks. We were one of the earliest groundbreakers of an extraordinary new Catholic high school. It had the best of everything. I left prepared for academic challenges, new talents, and a deep spiritual foundation. It was good.

We joked big time, we laughed in gales. We told our tales. We came to reminisce.

Someone wrote an article in one of the last issues of the school paper, referring to our "Ivory Tower". We came with thanks.

We came away from graduation with values. "Values" is an interesting word. The values you learn, things that are important, are imprinted on you. The best writing paper has a "watermark," seen when the page is held up to the light. That's us. All the cranes that flew away to futures came back to the roost fifty years later to leave twigs of advice and feathers of inspiration for the next generations of alumni. We left a legacy.

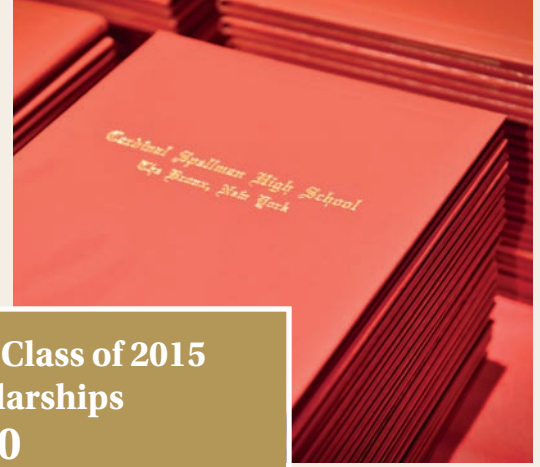




CLASS OF 2015 COLLEGE ACCEPTANCE LIST

- | | | | |
|--------------------------------|----------------------------------|-----------------------------------|-----------------------------------|
| Academy of Art University | Dominican College | Molloy College | Texas Christian University |
| Adelphi University | Drexel University | Monroe College | The Catholic University |
| Albany College of Pharmacy | Elmira College | Morgan State University | of America |
| and Health Sciences | Emerson College | Mount Holyoke College | The College of Westchester |
| Albright College | Eugene Lang College | Mount Saint Mary College | The Culinary Institute of America |
| Alfred University | Fairfield University | Mount Saint Mary's University | University of Bridgeport |
| American Academy of | Fairleigh Dickinson University | New York Institute of Technology | University of Connecticut |
| Dramatic Arts | Felician College | New York University | University of Hartford |
| American University | Florida International University | Northeastern University | University of Illinois |
| Barry University | Florida State University | Oxford College of Emory | University of Maine |
| Bay State College | Fordham University | University | University of Maryland |
| Berkeley College | Georgia State University | Pace University | University of New Hampshire |
| Boston College | Hamilton College | Parsons The New School | University of New Haven |
| Boston University | Hampton University | for Design | University of North Carolina |
| Brandeis University | Hartwick College | Penn State University | University of Pennsylvania |
| Bryant University | High Point University | Princeton University | University of Pittsburgh |
| Campbell University | Hofstra University | Purdue University | University of Scranton |
| Canisius College | Howard University | Quinnipiac University | University of South Carolina |
| Centenary College | Iona College | Rensselaer Polytechnic Institute | University of South Florida |
| Central Connecticut State | Ithaca College | Rider University | University of Tampa |
| University | Jackson State University | Rochester Institute of Technology | University of the Sciences |
| Champlain College | Jacksonville University | Roger Williams University | University of the Virgin Islands |
| City University of New York | Johnson and Wales University | Rutgers University | University of Vermont |
| City University of New York | Le Moyne College | Sacred Heart University | University of Virginia |
| Grove School of Engineering | Long Island University | Saint Anselm College | University of Wisconsin |
| Macaulay Honors College | Louisiana State University | Saint Bonaventure University | Utica College |
| The Sophie Davis School of | Loyola University of Maryland | Saint Francis College | Vassar College |
| Biomedical Education | Lynn University | Saint John's University | Villanova University |
| Clark Atlanta University | Manhattan College | Saint Peter's University | Virginia Commonwealth |
| Clarkson University | Manhattanville College | Saint Thomas Aquinas College | University |
| Clemson University | Mansfield University | School of Visual Arts | Virginia State University |
| College of Mount Saint Vincent | Marist College | Seton Hall University | Virginia Union University |
| College of New Rochelle | Marymount Manhattan College | Siena College | Wagner College |
| College of Saint Rose | Massachusetts College of | Simmons College | Western Connecticut State |
| Columbia University | Pharmacy and Health Sciences | Southern Connecticut State | University |
| Concordia College | Mercer University | University | William Paterson University |
| Cornell University | Mercy College | State University of New York | Wood Tobe-Coburn School |
| Daemen College | Miami University of Art and | Susquehanna University | York College of Pennsylvania |
| Dartmouth College | Design | Syracuse University | |
| Delaware State University | Michigan State University | Temple University | |

Cardinal Spellman High School Celebrates 53rd Commencement Ceremony



**Total amount received by the Class of 2015
for College Grants/Scholarships
\$33,136,853.00
Exceeding last year's record by \$3 million**

On Saturday, June 6th, 307 students of Cardinal Spellman High School received diplomas in a ceremony at the Lehman College Performing Arts Center. An invocation by Rev. James O'Shaughnessey was followed by Denesha Johnson of the senior class singing the National Anthem. Mr. Daniel O'Keefe, President/Principal, congratulated the Class of 2015, who in four years have lived the Spellman experience and embraced the culture and values of Cardinal Spellman High School. The 307 join more than 21,000 Spellman alumni, since the first graduation in 1963. "Work hard and strive to make yourself and the world a better place," Mr. O'Keefe told the graduates. He also announced the names of a number of teachers celebrating anniversary years in 2015: Alice Cavazzini and John DiPalermo (35), Anthony Felicissimo (25), and Emily Bruno and Anna D'Ambrosio (20). Also recognized were Rev. James O'Shaughnessey (37 years) and Rev. John Kraljic (19 years) of the Theology Department who will be retiring at the end of the school year.

Prior to the awarding of diplomas, Steven Plate, Spellman Class of 1972 and Director of the World Trade Center construction project, spoke about his experiences in the field of engineering. He told the graduates, "anticipate great things you will accomplish, while maintaining the core values of God, family and passion." Student speakers were Valedictorian Maya Lugo, the top ranked student in the Class of 2015, who will be attending Columbia University in the fall, and Salutatorian Kristen McMonagle, heading to St. John's University. The Cardinal Spellman Trophy and Memorial Scholarship, given to the two students who best embody the spirit of Francis Cardinal Spellman, was awarded to Keith Guerrant and Kristen McMonagle. Adam Biolsi and Maya Lugo received the Spellman Spirit Award, while the Spellman

Alumni Award went to Justin Henry and Victoria Ochiobi. The Seton-DeLaSalle Award, named in honor of Saint Elizabeth Ann Seton, founder of the Sisters of Charity, and Saint John Baptist de La Salle, founder of the Brothers of the Christian Schools, was presented to Kissondial Ram and Deanna Giraldi. Also recognized at the ceremony was Adam Biolsi and his family. Adam is the ninth (and final) member of the Biolsi family to graduate from Spellman.



CONGRATULATIONS TO THE CLASS OF 2015



Historic Artifacts Presented to Spellman by HSBC

On July 23rd a special presentation of historic artifacts was made to Cardinal Spellman High School by Mr. Michael Palmer, Vice President of HSBC Bank. These items were discovered at the HSBC building on Madison Avenue in Manhattan, near St. Patrick's Cathedral, as the company was moving its headquarters. In their conference room hung a framed photo of His Eminence Francis Cardinal Spellman throwing special coins into the fountain, during the dedication ceremony in 1966. Alongside that photo were the actual coins themselves. These unique articles of history were

almost thrown away, until Mr. Palmer was asked to contact the high school. Ironically, when he mentioned this to his wife, Melicia, she immediately told him to call Terry McCormack

(Class of '63), who she knew was very involved with Spellman. This led to Terry coordinating the presentation of coins by Mr. Palmer to Mr. Dan O'Keefe, Spellman's President/Principal and they will be added to the many artifacts on display in the "Cardinal's Room." Terry commented that it is "particularly special for me to be a part of the recovery and preservation of significant items related to Cardinal Spellman himself, since I had the honor to personally meet the Cardinal several times, as a member of the first graduating class in 1963." The Spellman community is grateful to have these new items for display.



Senior Class Gift Sets New Record

Special thanks to senior students who have once again organized a sale of sweatshirts to raise money for a class gift. Under the guidance of faculty member, John Schoenberg, students representing the Class of 2015, raised more than \$2,000 - setting a new record! 100% of the profits are designated to the Support Our Spellman Students Fund (SOSS), which provides emergency financial aid to struggling families.

Mr. Schoenberg's Marketing and Economics classes participated in this annual fundraiser, helping to design, market, and sell the sweatshirts. The seniors are responsible for placing the orders and distributing the products. Thank you class of 2015 for your hard work and dedication to Spellman!

Shakespeare Monologue Excellence

Spellman Students Finish Third in City-Wide Contest



On May 4th, Spellman students competed in the 3rd Annual ShakeSmack Competition, a Shakespeare scene competition for NYC schools at the Classic Stage Company in Manhattan. Competing against 19 other teams from all five boroughs, the Spellman team of Rebecca Mota '15, Christa Mattis '15, Maya Lugo '15, Kristina Fernandez '15, and Charlee Cay '15 was awarded third place honors. Congratulations on this wonderful accolade!

Wall Street Visits Spellman



Mr. Sam Stovall, the author of *The Seven Rules of Wall Street* and the Chief Investment Strategist for Standard and Poor's 500, visited Mr. Schoenberg's Personal Finance and Economic classes. Mr. Stovall has been kind enough to visit Spellman for the past 7 years. He introduces the students to investment strategy and wise financial decisions. Mr. Stovall is on CNBC, CNN and many different TV, radio finance and investment shows. Every year the students enjoy the visit by Mr. Stovall. He goes above and beyond every year taking time out of his busy schedule to enlighten Spellman students.

Spellman Students and Teachers

Create a Masterpiece in Our Community Garden

Under the direction of Science faculty member, Mrs. Rita Piliero, members of both the Community Art and 4G Clubs helped to beautify Spellman's community garden. Students and moderators from these clubs came to the school to sketch out and paint our shed along with nourishing the home grown crops.

When the harvests were ready, the students hosted a farmer's market where vegetables and fruits were available for purchase to the local community. After a long day of hard work, the students and moderators enjoyed a pasta lunch with pesto sauce and garlic bread made from the products of the Spellman Green House!



Spellman's Young Alumni Panel

Following their success in the winter, speaking with senior students, the Spellman panel of young alumni returned to their alma mater in the spring. This time the mission was to address the junior class on expectations and challenges that they should anticipate in their upcoming senior year at Spellman. Under the leadership of Ms. Anne-Marie Norberto '82, Assistant Director of Guidance and Qadry Harris '10, former Development Associate, these recent graduates mapped out a timeline for completing college applications along with helpful ways to avoid the infamous "senioritis". New to the panel was Roshana Brown '14 - last year's winner of the Cardinal Spellman Memorial Trophy and Scholarship. She joined returning panel members: Amanda Butler '12, Nancy Gonzalez '12, Yougnand Paul '13, Miranda Reyes '12, John Thomas '13 and Jelani Wheeler '12. The panel will convene again in the next academic year to help the Class of 2016 transition into their freshman year at college.

Student Artistry on Display

The 2015 Fine Arts Showcase Presents Student-Made Works of Art!

The annual Fine Arts Showcase presented the fantastic artistic talent of many Spellman students to parents, faculty and the Spellman community. Ms. Marie Murray, Chairperson of the Fine Arts Department, assisted by Ms. Meghan McCaffrey, coordinated this outstanding event. The beautiful displays of paintings, illustrations, photography, cartoons, and abstract art were arranged in the "Anne Gevlin Little Theater." It was very evident that a great deal of time and hard work went into these masterpieces. It was a wonderful exhibition of the many talents of our Spellman students!

Spellman Students Raising the Bar



This past June, Julian Graham '15 and Hector Galvan '15 received awards from Phyllis Frankfort, CEO of Working in Support of Education. Julian and Hector were invited to the Scholar's Reception for earning over a 95% on the WISE Personal Financial Literacy exam. This exam is given in 40 states and the two Spellman students were ranked in the top 4% of test takers in the entire nation! Congratulations to these fine young men!

SOSS

Saturday, October 10, 2015
 New York Athletic Club
 180 Central Park South @ 59th St.
 11:30 a.m. – 2:30 p.m.
 Tickets \$100

Support Our Spellman Students | 2015 Scholarship Brunch

Join us as we honor the following Spellman leaders for their dedication to our students.

Dawn DiGiacomo | **Terence McCormack, '63** | **John B. Rice '65**

Community Leadership AWARD



Dawn DiGiacomo
 Tuition Manager
 Finance Office

Dawn DiGiacomo has been an integral member of the Spellman community for more than 10 years. As the Finance Office's Tuition Manager, a critical position that has grown in importance since Spellman became financially independent from the Archdiocese in 2009, Dawn helps families on a daily basis who require assistance to help keep their child enrolled at Spellman. For many struggling families, tuition is quite a burden and Dawn goes above and beyond to try and match up resources whenever possible.

Alumni Leadership AWARD



Terence "Terry" McCormack
 Class of 1963

Terence "Terry" McCormack is a proud member of Spellman's first graduating class of 1963. Affectionately known as "Mr. Spellman", Terry completed many Spellman firsts, including first student body president, first Quarterback and first recipient of the Spellman Trophy (the top award at graduation). In addition to his 48-year career as a Consumer Products Sales & Marketing Executive, Terry was the founding President of the Alumni Association and most recently, Chair of the 1963 50th Anniversary reunion, spearheading the establishment of the "Spirit of '63" Scholarship Fund.

Alumni Leadership AWARD



John B. Rice
 Class of 1965

John B. Rice grew up in the Bronx and graduated from Cardinal Spellman in 1965. He enjoyed a long career as a tax partner with Coopers & Lybrand, retiring in 2007. John's commitment to Spellman has been unwavering as both a founding member of Spellman's Foundation Board and Board of Trustees. As a long-time supporter of Spellman's SOSS-Partnership of Support program, John has had a direct impact on the lives of many students and families, assisting with tuition for those in need.

All proceeds from this event will benefit the Support Our Spellman Students Fund which has distributed more than \$1,500,000 to over 600 students to help cover the cost of their tuition.

Name: _____ Class Year: _____ Phone/Email: _____

Address: _____ City/State/Zip: _____

- ___ **Benefactor Level** with a gift of \$7,850 which includes a premier table of ten, acknowledgment in our display materials, and will pay one full year's tuition for a CSHS student.
- ___ **Patron Level** with a gift of \$3,925 which includes a key table of ten, acknowledgment in our display materials, and will pay half of one year's tuition for a CSHS student.
- ___ **Partner Level** with a gift of \$1,962 which includes table of ten, acknowledgment in our display materials, and will pay a quarter of one year's tuition for a CSHS student.
- ___ **Individual Ticket** @ \$100
- ___ **Make a Donation to S.O.S.S.** Sorry, I cannot attend but I would like to help. \$ _____

My Guests Are:

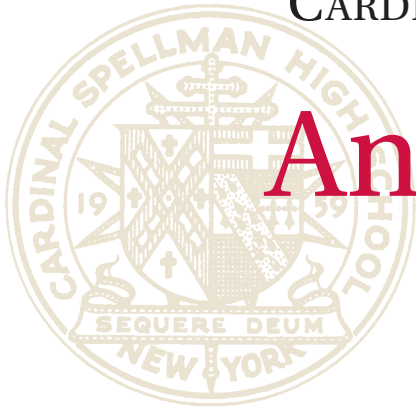
Name: _____ Name: _____ Name: _____

Please make check payable to: Cardinal Spellman High School or payment by credit card Amex, Visa, MC, Discover

Account Number: _____ Exp. (MM/YY) _____ Sec. Code _____

Your donation to this event is tax deductible to the fullest extent allowable by IRS regulations and applicable laws.

CARDINAL SPELLMAN HIGH SCHOOL



Annual Report of Donors

for the period February 2014 through January 2015



The monies received through the annual giving efforts of the alumni/ae, parents and friends of Cardinal Spellman High School make ongoing facility improvement projects possible. Equally important, your support provides academic scholarships and tuition assistance to needy students. Through your generosity, Cardinal Spellman is able to thrive and continue to offer our students a competitive and affordable education.

These lists have been prepared with great care. However, despite our sincere efforts to avoid omissions or inaccuracies, we know they can occur. If any are noted, we hope you will accept our apology and advise us of the error by contacting the Advancement Office at (718) 547-4732 or through our email address alumni@cardinalspellman.org.

Annual Report

for the period February 2014 through January 2015

TOTAL GIVING RESULTS

**Record-breaking
year for donations!**

Annual Fund	
2014 Annual Fund	\$337,592.80
Ann's Lunch Box	\$21,004.16
Scholarships	
S.O.S.S. Fund	\$102,777.34
Other Scholarships	\$82,406.53
Capital Income	
The Next Chapter - Capital Campaign	\$479,936.98
Other Restricted Income	\$120,233.32
Total:	\$1,143,951.13

Giving By Class

CLASS OF 1963

DISTINGUISHED MEMBER

Gerald T. Finn

LAUREATE MEMBER

Raymond J. Biddiscombe

PATRON MEMBER

Joseph P. Gehegan, Jr.

ASSOCIATE

Michael J. Queenan
Terence J. McCormack
Patrick F. Tedaldi

THE CENTURY CLUB

Kevin J. Baltazar
Richard T. Benderoth
Rosemarie (Speranza) Benderoth
Kathleen M. (Lynch) Eussen
Mary E. (Crane) Felton-Izzo
Lorraine C. Longo
Patricia A. (Cullinan) Pardon

SPELLMAN RED & WHITE

Robin A. (Sharff) Ahrens
Lorraine M. (Rolleri) Hartman
Frank G. Hettinger

CLASS OF 1964

LAUREATE MEMBER

Diana (McInerney) Gorman

PATRON MEMBER

Linda M. (Pescosolido) Kleva

PARTNER

John D. Hajko
Clare (Morgan) Rakshys
In Memory of Robert Rakshys
Laura M. (Hamilton) Sturtevant

ASSOCIATE

Christina M. Brown
*In Memory of Phyllis (Tessier)
Bufano '64*
Michael L. Ferrante
Phyllis (Savino) Ferrante
Robert J. Muller
Stephen T. Pluta
Barbara S. (Miklus) Whelan

THE CENTURY CLUB

John R. Ahearn
Paul J. Braunwart
Robert F. Caronia
Angela H. (Imperioli) Cavalluzzo
Ellen M. (Johanson) Cosgrove
*In Memory of Antoinette (Saxer)
Louttit '64*
Kevin P. Coyne
Daniel B. Crimmins
Robert J. Doonan
Margaret M. (Fleming) Fahy
Robert M. Heffernan
Irene J. (Renaldo) Lowenkron

Barbara M. (Pastorek) Murray
*In Memory of Antoinette (Saxer)
Louttit '64*

Janice M. (Rhoder) Penn
Eileen M. (Cleary) Skibo
Diane F. Sorkin
Rita A. (Vitiello) Vitiello
Helen C. (Vincent) Wilson

SPELLMAN RED & WHITE

Arthur N. Corsano
William L. Mansfield
Adelaide F. (Powell) Valentine

CLASS OF 1965

PRESIDENT'S CIRCLE

John B. Rice

DISTINGUISHED MEMBER

Helen (Rosenbergen) Scheuer

LAUREATE MEMBER

Marie A. Li Trenta
Donald G. Susan McCrossen
John E. Sloan

PATRON MEMBER

Mara (Rufino) Bannard
William L. Bricker, Jr.
Joseph A. Maloney

PARTNER

Edward R. Chiaravalle
Kathleen (Hughes) Chiaravalle

Mary Ann Dowling-Hernandez
Mary E. Goldsmith-Larkin
John F. McGovern
Barbara (Travers) Queenan
Carol A. Sonnessa
Gregory J. Waldron

ASSOCIATE

Ronald J. DiPrinzio
Catherine J. (Dooney) Fager
Charles A. Walwyn, Jr.
In Memory of Audrey L. Walwyn

THE CENTURY CLUB

Linda M. (Hedrich) Ackerly
Patricia A. Ambrose
Francis S. Billak
Guy P. Caputo
John M. Cashin
Paul A. Conti
Robert E. Drake
Edson L. Ford
Mary Frey Cashin
Arthur R. Garcia
Michael A. Heffernan
Nancy (Lofaro) Heise
MaryAnne T. (LaMalfa) LaMassa
Albert A. Lamperti
Vita (Coviello) Lamperti
William F. O'Neill
Anthony G. Picciano
George Pifko, Jr.
Sylvia M. Ramos
Cecilia A. Reece-Guenette

SPELLMAN'S DONOR GIFT CLUBS

SPELLMAN FOUNDER
(\$100,000 - \$249,000)

SPELLMAN ENDOWER
(\$50,000 - \$99,999)

SPELLMAN BENEFACTOR
(\$25,000 - \$49,999)

PRESIDENT'S CIRCLE
(\$10,000 - \$24,999)

PRINCIPAL'S CIRCLE
(\$5,000 - \$9,999)

DISTINGUISHED MEMBER
(\$2,500 - \$4,999)

LAUREATE MEMBER
(\$1,500 - \$2,499)

PATRON MEMBER
(\$1,000 - \$1,499)

PARTNER
(\$500 - \$999)

ASSOCIATE
(\$250 - \$499)

THE CENTURY CLUB
(\$100 - \$249)

SPELLMAN RED & WHITE
(Up to \$99.00)

Maria A. (Luisa) Salemno
 Mary S. (Bonaiuto) Salerno
 Gary A. Sozzi
 Brian J. Tunney
 Anne E. (Hannaway) Walker

SPELLMAN RED & WHITE

Joseph J. Altieri
 Thomas J. Brennan
 Thomas F. Briody
 Joanne T. (Fabrizio) Cannone
 Joan (Erickson) Cullen
 Peter J. Cusack
 GraceAnne (Andreassi) DeCandido
 Joan L. (Gnocchi) Gerardi
 Rose Marie A. Lavergata
 Judith A. Madden
 Irene C. (Hanratty) Martin
 Valerie V. (Alessandro) Pavone
 Peter J. Puleo
 Patricia A. (O'Brien) Wands

CLASS OF 1966

PRINCIPAL'S CIRCLE

George H. Hayes
 Mary Jane (Steiniger) Rafferty

DISTINGUISHED MEMBER

Bettina M. Miraglia
*In Loving Memory of Julio (Jay)
 & Bessie Miraglia*
 Marie T. Tocci

LAUREATE MEMBER

Kathleen T. Erickson
*In Memory of Mr. Edward J. Michaelson
 Band Director 1964-1981*
 Rita (Sgrignoli) Sloan

PATRON MEMBER

Maureen (Shanahan) Schneider
 Robert J. Schneider

PARTNER

Patricia A. Binninger
 Omar C. Bordatto
 Jane (Ward) Burns
 Virginia M. (Diodati) Colangelo
 Edward F. Curley
 Peter H. Garbincius
 Terry A. (Jones) LaFavors
 John W. Manning
 Anne (McNamara) Pol
 Corrado D. Quintiliani
 Kathleen M. (Hooper) Regan
 Dolores M. (Lindsay) Schermer
 James D. Sheppard
 Robert A. Terranova

ASSOCIATE

Joseph J. Costello Jr.
 Laura M. Forish-Ferguson
 Pasquale J. Jacoi
 Thomas A. Lenox
 Natalie M. (DeGennaro) Manning
 Maria A. (Parran) McDonald
 Eileen T. Moran
 Katherine O'Brien O'Keefe
 Jane O'Connor Lenox
 Susan A. Voge

THE CENTURY CLUB

G. A. Ben Binninger
 Jean M. Civikly-Powell
 Jerome A. Coleman
 Mark De Serio
 Elizabeth A. Effinger
 Rosemarie (Cucuzzo) Farenga
 Carol A. (Wohlgemuth) Ferrara
 Joseph C. Furnari
 John J. Graham
 Jane T. (Gargani) Hanley
 Kathleen A. (O'Sullivan) Kee
 Joseph D. Klingman
 Diane (Miller) Kurtz
 Warren L. Lyons
 Joanne M. Mastropolo
 James J. Moore
 Karen P. (Savolt) O'Brien
 Frances (Fabrizio) Oldi
 Michael T. Oldi
 Thomas Michael O'Leary
 Michael G. Oliva
 Patricia A. (Benson) Pellegrino
 Virginia M. (Jaekel) Pollock
 Anthony J. Sciacca
 Elisa A. (DeMasi) Siciliano
 John F. Spencer
 Marie A. Tarantino
 Terry P. Theret
 Edward R. Toth
 Dennis J. Urso
 Anna Marie T. Valerio
 Joan L. (Conti) Vanchieri

SPELLMAN RED & WHITE

Lucia A. Calvano
 Millicent M. Detko
 Donna (Tricarico) Fleming
 Leslie A. (Harmon) Pagan
 Phyllis L. (Patella) Palumbo

CLASS OF 1967

PRINCIPAL'S CIRCLE

Maureen McGuire

DISTINGUISHED MEMBER

Janice (Tesoriero) Pauly

LAUREATE MEMBER

Marie (Delgado) Travis

PATRON MEMBER

James F. Nolan

PARTNER

Carrin V. (Caputo) Holborn
 Arthur J. Lichte
 Maria (Jerussi) Terranova

ASSOCIATE

Diane H. Bert-Ranes
 Valerie (McGowan) Cheeseman
 Donna M. DiGioia
 Gerard J. Donlin
 Frank E. Frascati
 Anthony T. McAllen
 John M. Pica
 Linda (Licitra) Pica
 Michael G. Reilly
 Kris M. (Strubing) Vickery
 Geraldine M. Voelkel
 Walter J. Zupancich

THE CENTURY CLUB

Mary A. Aloisio
 Linda M. (Ellingsworth) Antoniewicz
 Simon B. Barbosa
 Jocelyn (Diggs) Burrell
 Richard L. Chiesa
 Gary V. Gong
 Yvonne A. (Paluzzi) Greenbaum
 Mary Jane Hall-Gorges
 John P. Hanley
 Santos Jimenez, Jr.
 John N. Laguna
 Martha (David) Laguna
 John P. Lolli
 Claudia (Proto) McDermott
 Patrick J. McGuinness
 Matthew J. McKinley
 Charles J. Miccoli
 Steven Portera
 Joanne M. Russo Reinhardt
 Maria (Grabowski) Shapiro
 Mary E. P. (Cahill) Von Ancken
 Anton G. Wagner
 Monica A. (Lyttle) Zeigler

SPELLMAN RED & WHITE

Veronica A. (Cullen) Barra
 Nancy A. Boland
 Mary L. (Brennan) DeStasio
 Patricia (Hargrave) Mansfield
 Harold M. McCabe
 Gail M. Stewart-Evans
 Edward J. Vincenzi, Sr.
 Daniel J. Walits
 Joan N. (Morrissey) Wilk
 Louis A. Zani

CLASS OF 1968

PRINCIPAL'S CIRCLE

Mauro A. Contrastano

DISTINGUISHED MEMBER

Robert E. Altomare

LAUREATE MEMBER

Nancy (Storace) De Cicco

PATRON MEMBER

Waldemar A. Comas
 Fernando J. Ferrer
 Thomas F. McGowan '68 & Malinda P.
 Teel
 Frank R. Pond

PARTNER

Jack L. Arlotta
 Sheila M. Cullen
 John M. Kiernan
In Memory of John & Eileen Kiernan
 Anthony J. Masiello
 Richard J. Popp
 Joseph G. Serico
 Nydia E. (Mercado) Sturges
 Gerard F. Tortorelli

ASSOCIATE

Lorraine Ambrosecchio
 Marie C. (Mirenda) Flom
 Margaret M. (Hunt) Gunshanan
In Memory of my Beloved, Jimmy '67
 Warren J. Reilly
 Victoria A. (Trucchi) Sullivan

THE CENTURY CLUB

Daniel A. Agosto
 Louis G. Altieri
 Juanita Bing Newton
 Marta Ceballos
 John B. Clark
 Ronald L. Ellis
 Eileen T. (Stokes) Esposito
 Kenneth A. Gillman
 Janet E. Holwell
 Christina A. (Soto) Lavine
 Enrique H. Monsanto
 Thomas R. Mullen
 Edward V. O'Dwyer
 Michael F. Shadwick
 Barbara (Rand) Sullivan
 Donald J. Sullivan
 Maureen A. Sullivan
 Michael J. Sweeney

SPELLMAN RED & WHITE

Barbara A. (Sycora) Basciano
 Magaly C. (Garcia) Chiprut
 Mary D. (Fleming) Courtney
 Nicholas S. Cristiano
 Robert A. Ellis
 Geraldine D. (Jelinek) Johnson
 Rita A. Leone
 Kathleen M. O'Toole
 Darlene L. (Boothe) Shamsid-Deen
 Jacqueline M. (Walsh) Tridente
 Christine (Cirigliano) Volo
 Richard M. Volo

CLASS OF 1969

PRESIDENT'S CIRCLE

William F. Lawrence

LAUREATE MEMBER

Gary B. Johnson
*In Memory of Rev. Msgr. George J.
 Valastro*

PATRON MEMBER

Anne J. (McGrory) Hofmann

PARTNER

Mary T. DiBiase Blaich
 James L. Dotti
 William P. Hajko
 Joseph J. Mirra
 Mary Ellen (Brucciani) Schaeffer
 Denise (Letscher) Serico

ASSOCIATE

Gerald P. Fallon
 John T. Lettieri
 Michael F. Mari
 William F. X. Oleske
 Kathleen (O'Connor) Reilly
 Stephen J. Tyrrell

THE CENTURY CLUB

James E. Brady
 Steven M. Buccieri
 Janis M. (Trocle) DeGaspari
 Laura C. Fasulo
 Patricia A. Gabriele
 Vera T. Glazewski
 Stephen P. Kerch
 Ellen (Marietta) Klingman
 Louisa Kramer Vida
 Carol A. (Ciccimarra) Logan

Charles A. Maniglia
 Marie (Heaney) McCarrick
 Kathryn V. McCulloch
 Kerry (McDonnell) McLean
 Robert F. McLean
 Angelo J. Miele
 Mary Ellen A. (Cicero) Montalvo
 Daniel W. Murray
 Rachele M. (Capetola) Nicoletti
 Dorothy H. Reynolds
 Margaret T. Ruiz
 Kathleen G. Savolt
 Denise B. Sepe
 William A. Sharp
 Vincent C. Spata
 John C. Taylor
 Stephen R. Vida
 Gloriana B. Waters Grant
 Warren F. Wezel
 Eileen M. (Carroll) Witt
 Philip J. Zodda

SPELLMAN RED & WHITE

Karen M. (Dobbins) Barkley
 Marianne T. (Cavatano) Colucci
In Memory of Robert S. Colucci '69
 Joyce A. (Monastero) Dato
 Francine J. (Ruocco) Gates
 William Gates
 Elizabeth (Duschaneck) Gruffi
 Richard A. Gruffi
 Patricia A. Healy
 Rita C. (Laios) Lieberman
 Susan M. (Sonnessa) Meyer
 Mary P. O'Mahony
 Anne M. Thomas
 Frank D. Tomanelli
 Lynne P. Volpe
 Lynette N. (Migliaccio) Waterhouse

CLASS OF 1970

SPELLMAN ENDOWER
 Paula A. (Williams) Madison

PRINCIPAL'S CIRCLE

Rosemarie (Muranelli) Baker
 Michael E. Costa

DISTINGUISHED MEMBER

Catherine F. Higgins
 Kevin W. Mangan
 Richard J. Marcogliese

LAUREATE MEMBER

Joan E. Ranallo
*In Memory of Sam and Marian
 Ranallo*

PATRON MEMBER

Maureen (Garvey) Falconi
 Maureen (Matthews) Pond

PARTNER

Dorothy A. Krynicki
*In Memory of Cathy Krynicki,
 mother of Kyle Krynicki '10*
 Miguel A. Lugo
 Bert Marro ('70) & Herb Rubenstein
 Carol (Barozzi) Popp

ASSOCIATE

Thomas F. Boland
 Diane C. Coletti-Hunter
 Ivetta A. Cruz-Rosenberg
 Marsha E. Diggs
 Angela (Bonelli) Fornabaio
 Lizbeth Gonzalez
 Peter M. Hickey
 Rita C. Mabli
 Peter C. Murphy
 Martha (De Cesare) Perlmutter
*In Memory of my Parents, Michael &
 Vera De Cesare and Jennifer L.
 Malliet '70*
 Charles J. Pignatelli
 Karen A. Queally
 William P. Schell

THE CENTURY CLUB

Judy E. (McKenna) Carlsson
 James J. Fitzpatrick
 Karen L. Grygus
 Angela M. (Latteri) Guerrero
 Edward J. Hopkins
 Jean (Cooney) Hopkins
 Isabel (Santana) Iglesias
 Charles A. Keane
 Edwinna A. (Granelli) Lucyk
 Robert E. Malone
 Teresa A. Mandarino
 Laura (Impelluso) Maniglia
 Kevin P. Marrinan
 Margaret (McNiff) McCartney
 Richard M. Moccia
 Angelo L. Moliterno
 Doris P. Motta
 Theresa C. (Klingner) Murphy
 Janet L. (Saccante) Partenza
 Robert M. Penna
 Joan (De Gaetano) Pochetti
 Lawrence M. Pochetti
 Christine T. (Pluta) Rinaldi
 Janet M. Storace
 Vicky A. (Nelson) Taheri
 Philip S. Walotsky
 Theresa (Speckman) Wright

SPELLMAN RED & WHITE

Dorothy E. (Byrnes) Bollbach
 Patricia N. (D'Aquanni) Denema
 Patricia M. (Breiter) Foran
 Patricia J. Genova
 Peter Lundahl
 Brian J. Minahan
 Janice M. (Toterhi) Ritter
 Brian D. Sherry
 Veronica (Toumey) Sherry
 Julio J. Vazquez

CLASS OF 1971

PRESIDENT'S CIRCLE
 Gerald S. Adolph
 Patrick G. Boyle

PRINCIPAL'S CIRCLE

Stephen J. Duffy

DISTINGUISHED MEMBER

Brenda A. Nurse

LAUREATE MEMBER

Maryann T. Cortelli
 Helen M. (Zadarlik) Cousins
 John J. DiBiase
In Memory of Rev. Brian P. Barrett '71
 John T. Endres
 Mary-Jean V. Gurzenda
 Gerard J. McGowan, Jr.

PATRON MEMBER

John V. DeSimone
 Linda (Liberatore) DeSimone
 Curtis C. Johnson, Jr.
 Nancy A. Neville

PARTNER

Joseph A. Bello
 Robert T. D'Alessandro
 Peg (Hedrich) Fiore

ASSOCIATE

Gerard A. Coords
 Eileen (Morrissey) Hughes
 Kevin A. Michel
 Noreen Quirk
 Julia Ann Tropea

THE CENTURY CLUB

Denise M. (Valrosa) Albertelli
 Anthony J. Ciarfeo
 Victoria (Morris) Ciarfeo
 Joseph P. DeFazio
 Maryanne T. (Ryan) Dowd
 Stephen J. Ganns
 Robert F. LaSala
 Anne-Marie G. Mallon
 John P. McCarrick
 Barbara (Ferrari) Moccia
 Martin T. Mylott
 Sandra (Strickland) Nichols
 Gerard P. O'Neill
 Laurie A. Pellegrino
 Barbara (Colbert) Powers
 Victoria Rizzo Nikou
 Carol (Astorino) Ruddy
 Hillary A. (Rion) Spaziante
 Richard J. Toymil
 Peter J. Zeale

SPELLMAN RED & WHITE

Ronald F. Bruno
 Debra S. (Cipriani) Burke
 Carlota I. (Alvarez) Grate
 Christopher B. Keenan
 Dyanne P. London
 Theodore L. McCallion
 Patricia E. Nealon
 Sebastian P. Restifo
 Donna M. Thomas-Morcilio
 James J. Tobin
 Mary T. (Hoolan) Versosky

CLASS OF 1972

SPELLMAN FOUNDER
 Rafael Collado
 Daniel S. O'Connell
 Gloria (Perri) O'Connell

PRINCIPAL'S CIRCLE

Kathleen M. Griffin Stack
 Kevin E. Lofton

DISTINGUISHED MEMBER

Joan Di Martino Nardi
 Richard A. Nardi

LAUREATE MEMBER

Gaspere J. Cerullo
 Anonymous

PATRON MEMBER

Brendan D. Boyle

PARTNER

James C. Anemone
 Joseph Chiamonte
 Michael Conforti
 Kevin S. Finnegan
In Memory of John R. Rigley '69
 Alexander A. Grasso
 Kevin E. Noonan
 Frank W. Phelan

ASSOCIATE

Barbara (Lamont) Coords
 Peter F. De Nicola
 Marian T. (Sabatiello) Hester
 Edward J. Mahoney
 Janet (Wezel) Michel
 Arthur E. Shattuck
 Dennis J. Vellucci

THE CENTURY CLUB

Robert W. Anderson
 Mary Bazylak
 Thomas M. Burns
 Mary (De Sanctis) Carmosino
 Ralph F. Carmosino
 Clara J. (D'Agostino) Chudow
 Diana M. (Gervasi) Cretella
 Susan L. (Gallagher) Dahl
 Gail P. (Massarella) De Feo
 Mary (Doyle) DeFazio
 Peter A. Deliz
 Patricia E. Gallagher
 John J. Hickey
 Peter J. Killeen
 Joseph (Matamoros) March, Sr.
 Mary E. (Reville) McDougall
 Edmund M. O'Neill
 Theodore M. Shaw
 Deborah T. Shinnick
 Rita A. Sicurella-Milo
 Donald J. Slaughter
 Bonnie J. (Paul) Zodda-Schmidt

SPELLMAN RED & WHITE

Theodore A. Babcock
 Elena C. (De Marco) Coogan
 Carol T. Crida
 Gaetano D. De Sanctis
 Renee Ferrante-Fiorenza
 Barbara J. Fling Arthur
 Sarah P. Gavan
 Richard P. Giorgianni
 Marian F. McTague
 Patricia A. (Hogan) Nugent
 Vera E. Person-Aaron
*In Honor of Patricia Gallagher
 Greenberg and Stephen Greenberg*
 Karen A. Pollastrino

CLASS OF 1973**PRINCIPAL'S CIRCLE**

John E. Potter

LAUREATE MEMBER

Donato ('73) & Anna Marie Settanni

PATRON MEMBER

Peter N. Bassano

Robert B. DiVincenzo

In Honor of Fred Calacone

John M. McCorry

Charles D. Russo

PARTNER

John H. Coords

John W. Devine

Edmund P. Hartnett

Angelo J. Scialabba

Rosemary (Tansey) Troccoli

ASSOCIATE

Paul A. Carris

Mary T. Cotter O'Malley

Eileen C. Doyle

*In Memory of beloved, Jimmy**Killarney '72*

Diane F. Giorgi

Kevin F. Graham

Charles H. Johnson

Kevin M. Kennedy

Joseph S. Lopes

Joseph C. Lynch

In Memory of Ronald J. Balma '73

Bruce F. Martino

Vivian S. Mejias

Eileen M. Power

Joseph A. Sagula

William J. Servedio

THE CENTURY CLUB

Karin E. Burkhard

Salvatore T. Cerami

Mary J. Connor

Joseph A. DeMauro

Lori A. Dunn

Elizabeth C. (Devenuto) Fels

Dalma Fernandez

John L. Florio

Michele A. Giaccio

Colleen M. Grondona

Kathleen M. (Killeen) Hannigan

Michael C. Madden

Daniel P. Mangan

Bryan J. McGreal

James T. Murphy

Nancy (Klinke) O'Neill

William E. O'Neill

Victoria A. (Cass) Phelps-Bratt

Angela (Delli Paoli) Renz

In Memory of Rose Delli Paoli

Anthony T. Saviano

Linda R. Scanzano

Anton J. Schmitt

Rosemary (DiGiorgio) Williams

Gerard A. Williams

James E. Wynn

SPELLMAN RED & WHITE

Thomas A. Carielli

Caryl (Jarus) Dabenigno

Elizabeth R. Daly

Ahraianna (Karen DeTone) Della Tone

Cynthia A. Giordano-Bassat

Joanne R. Guerriero

Peter G. McKeon

Celia M. (Diolosa) Remediani

Anne F. (Winterroth) Vasile

CLASS OF 1974**PRESIDENT'S CIRCLE**

Gennaro J. Fulvio

PRINCIPAL'S CIRCLE

A Member of the Class of 1974

LAUREATE MEMBER

Robert ('74) & Carol Romeo

PARTNER

Rita M. (Kolovich) Hartman

Lenworth N. ('74) & Patricia Johnson

In Memory of Brother E. James Stolz

Michael P. McSherry

Thomas J. Shoemaker

*In Honor of Rafael Collado '72***ASSOCIATE**

James T. Buonincontri

Timothy M. Dodd

Stephen D. Donohue

Stephen T. ('74) & Maureen Eble

Alfred G. Felio

Patrick A. Garvey

Terrance P. Hughes

Jennifer (Lizzo) Johnson

Gerard M. Kehoe

Vincent M. Kiernan

Paul Ling

Philip J. McGrath

David J. O'Shea

Pamela A. Perrone

THE CENTURY CLUB

Charles Ayes, Jr.

Michael J. Bachynsky

Loraine (Pedretti) Burns

Daniel V. Cahillane

JoAnn (Manna) Cannella

Frank A. Carra

John T. Coleman

Regina A. (D'Adamo) De Marco

JoAnn E. (Alberts) Dunn

Anne R. Flynn

Joseph J. Garozzo

Charles E. Giangarra

Jean (Pelosi) Giangarra

Barbara J. (Cortelli) Halecki

Eileen (Gambone) Justino

Michael G. Justino

Nicholas P. Klumpp

Vincent S. Panella

Theresa (Amigroni) Rappaport

In Memory of Orio J. Palmer '74

Patricia A. (O'Meara) Slattery

Walter Stranzl

SPELLMAN RED & WHITE

Theresa (Annibale) Bellavia

Victor D. Bellavia

Mark M. Bianco

Tina Marie A. Bonanno

Dorothy A. Brennan

Theresa M. (Rothlauf) Cisek

Peter A. De Marco

Jeffrey O. DeTone

Rosemarina (Juachon) Fabrick

Peter R. Flanagan

Susan A. (Wiszowaty) Huben

James B. Kenny

Joan L. (Dooley) McCoy

Janine M. (Pellet) O'Connor

Joanne (Schmid) Regan

Nivo Rovedo

Richard J. Silvers

James B. Slattery

Joseph Tyrrell

Anthony Venturino

Debbie J. Vigliotti

Paula A. Wicklow

CLASS OF 1975**SPELLMAN BENEFACTOR**

Thomas Z. Scarangelo

PRESIDENT'S CIRCLE

Emanuel ('75) & Joanne Chirico

DISTINGUISHED MEMBER

Mary E. Halloran

John P. Nallen

LAUREATE MEMBER

Paul A. Mackin

PARTNER

Barbara A. (Grogan) Quiros

ASSOCIATE

Michael S. Arena

Noreen A. Burns-McDonald

In Memory of William & Helen Burns

Gabriel M. Cidri

Edward N. ('75) & Antonella De Lia

Michael P. Dunworth

Claudia Longo

John Magnus

William J. McCrystal

John D. McGinty

Cynthia M. Reed

Donald J. Roderick

THE CENTURY CLUB

Domenico Assalone

Valerie (Amato) Assalone

Gerard A. Callaghan

Clare (McMorrow) Castro

Donna Dury Felker

Cathy (Rogers) Ganns

Terrence M. Gorman

Kenneth S. Kurtz

Anthony W. Marangiello

Christina M. (Gagliano) Miller

Cathy A. (Catanzaro) Ordiway

Debora J. Postrk

Noreen E. Rafferty Fernandez

Karen A. (Siemer) Roach

Richard E. Schneider

Christopher J. Sullivan

Claudia J. Tagliaferri

Lisa D. Toscano

Michael R. Virgintino

Patricia M. (Carosi) Vitelli

George P. Warnock

SPELLMAN RED & WHITE

Maritza Alvarado

Monica M. Andreassi

Mary Jean E. Caputo

Natasha A. Court

Teresa M. Di Mauro

Patti Doyle-Gallucci

Carol A. (Becchina) Egloff

Jeri D. Faulkner

Laura J. (Petricca) Graziosa

Michele (Monaco) Isidori

Doreen M. (Hynes) Kluber

Linda (Wilkowski) Lavarello

Daniel O'Connor

Thomas P. Ormsby

Susan L. (Forestieri) Pellegrini

Joanne (Monaco) Puntillo

Elizabeth (Quentin) Rodrigues

Denise (McCormick) Zungoli

CLASS OF 1976**PRINCIPAL'S CIRCLE**

Kieran P. McTague

LAUREATE MEMBER

Noreen F. Bedini Ferrante

PATRON MEMBER

Marie C. (Barrett) Clifford

PARTNER

Michael S. Berardino

Deborah A. Buonagurio

ASSOCIATE

Frank Bernabo

Charles J. Clark

Orestes A. Iglesias

Leah A. (Metz) Sonnick

THE CENTURY CLUB

Julie A. Bayley

Patrice M. Coleman

Patrice M. Cortelli

Maria T. Cortese Gentile

Judith M. (Chulicholo) Fucci

Lizette Guillen Rivera

Joseph A. Marra

In Memory of John Mangialardi '76

Joan D. Messina Shen

Maria (Delli Paoli) Morgan

*In Memory of my dad, Andrew Delli**Paoli who passed while I was a**student at CSHS*

Roberto Morson

Joseph G. Ponterotto

Michael C. Rappe

In Memory of Orio J. Palmer '74

Leo C. Rotello

Noreen S. Schifini

Eileen R. (Friel) Stivale

Carol A. Zippo

SPELLMAN RED & WHITE

Christopher J. Caivano

Kenneth P. Cooper

William J. Crispino

Rosanne (Torchetti) Danner

Michael T. Furnari

Theresa (Mastronardi) Knox

Anthony L. ('69) & Jane Schiavone
In Memory of Chris Vitiello, John Mangialardi, Anthony L. Schiavone, Sr. and the Ardan Family
 Rosario M. Vignali
 Gregory J. Wilson
 Frank J. Wronski

CLASS OF 1977**LAUREATE MEMBER**

Frank J. Leone
 Bernadette M. (Giangrossi) Weidman

PATRON MEMBER

Salvatore J. Di Grandi
 Beatriz (Diaz) Taveras

PARTNER

Myriam (Moreno) Berardino
 Maria I. Artime
In Memory of Antonio (Sam) Artime
 Virginia A. Gortych-Barnes
 Gerard P. Swikata
In Memory of Orio J. Palmer '74

ASSOCIATE

John E. Brosnan
 Llewellyn J. Cornelius
 Antoinette V. Racioppo
 Teresa A. Scala

THE CENTURY CLUB

Maria A. Bologna
 Diane (Leotta) Carra
 Edward W. LaPorta
 Annemarie T. (Infantino) Murphy
In Memory of Thomas Murphy
 Louisa J. Pricoli
 Roseann M. Russo
 Andrew J. Ryan
 Patrick G. Ryan
 Frank L. Stewart

SPELLMAN RED & WHITE

Richard L. Carbonetto
 Patrick J. McHugh
 Alan J. Zale

CLASS OF 1978**LAUREATE MEMBER**

John G. O'Hara

PARTNER

Mary (Rogan) Swikata
In Memory of Orio J. Palmer '74

ASSOCIATE

Edward P. Capper
 Mary M. (Conti) DeBellis
 Peter F. Gelber
 Ana M. Vegega
In Memory of Robert A. Lopez '78

THE CENTURY CLUB

Andrew M. Calamari
 Joseph E. Castro
 Susan Cottingham
 Marilyn I. (Szempruch) Coyle
 Robert A. Faulkner
 John J. Glasheen
 Robert J. Handler

Susan (Cortazzo) Handler
 Catherine M. Hickey
 Thomas D. Huvane
 Sean G. Meenan
 Frank D. O'Connor
 Eileen T. O'Driscoll
 Joseph J. Saltarelli
 John R. Shelley
 Daniel J. Simms
 Kevin M. Stephens

SPELLMAN RED & WHITE

Joseph J. Finora
 Doris M. (Carrasquillo) Gonzalez
 James J. Joyce
 Suzanne (DiGrandi) Kates
 Joann (Staino) Knisely
 Kerri A. Waters Moore

CLASS OF 1979**DISTINGUISHED MEMBER**

Daniel N. O'Brien

PATRON MEMBER

Robert L. Pash

PARTNER

John R. Ambroseo
 Margaret M. Mullins
 John P. O'Keefe
In Memory of Mary O'Keefe
 James F. Phelan
 James J. Roberts
 Emmanuel D. Sanz

ASSOCIATE

Marie O'Neill-Sheehan
 Angela M. Sangirardi

THE CENTURY CLUB

Salvatore A. Bongiorno
 Marie B. (Hickey) Brennan
 Michael J. Cerullo
 Paul G. Cregan
 Kathleen (Crowley) Crowley
 Frank W. Johnson
 Peter D. Marghella
 JoAnn McLaughlin
 Robin P. Moreno
 Sean T. Quinn
 Leroy Smoot

SPELLMAN RED & WHITE

Frank Bilotto
 Mary (Morley) Brunetti
 Stephen Brunetti
 Lina C. (La Spisa) Calandra
 Eugene P. Cilento
 Maureen Coleman
In Memory of Vincent M. Burns '79
 Charles J. Cullen
 Laura R. (Janssen) Dalton
 Maryann Drago-Dowling
 Nancy A. (Gerrity) Earl
 Laurie A. Giolito Spampinato
 Tracey A. (Mitchell) Glennon
 Jeanette I. (Ricci) Horn
 Thomas J. McCarthy
 Harry F. Sabatano
 Joseph P. Sinnott

CLASS OF 1980**PRESIDENT'S CIRCLE**

Lawrence & Teresa A. (Barrett '80)
 Hamdan

DISTINGUISHED MEMBER

Rosanne A. (Ilario) Luzarraga

PARTNER

Valerie A. DiFebo
 Maura E. Grimes
 Cindy A. Kostrna

ASSOCIATE

Clare A. Connor-Hughes
 Matthew J. Mackin
 Donna M. (Collura) Rapaccioli

THE CENTURY CLUB

Lisa (Tarallo) Gillies
 John F. McCabe
 Lisa (Payne) Wansley

SPELLMAN RED & WHITE

Jeanine (DeBartolo) Craig
 Denise M. Dobbins-Kowalik
 Henry W. Guglielmo
 David H. Johnson V

CLASS OF 1981**DISTINGUISHED MEMBER**

Brendan J. Spillane

PATRON MEMBER

Ben A. DiLullo
In Memory of Domenica "Dorina" DiLullo '86
 Eileen G. Lynch

PARTNER

Mary A. (Murphy) Davey
 Robbin A. Harrison
 Stephen J. Robinson

ASSOCIATE

Martin F. Davey
 Eugene J. De Silva

THE CENTURY CLUB

Doreen M. Alicea
 Lisa M. (Annunziata) Bell
 John J. Bruno
 William J. Fleming
 Catherine R. Frega
 Christine (DeMarco) Gentile
 Josephine R. (Sage) McCaffrey
 Timothy J. McGovern
 Robert A. Quarato

SPELLMAN RED & WHITE

Peter M. Antoci
 Lisabeth (Perez) Castle
 Joseph N. DiMaria
 Patricia (Dilorio) McNulty
 Michael Pearce
 Josephine (McQuade) Sabatano
 Selena (Brito) Thomas

CLASS OF 1982**LAUREATE MEMBER**

Catherine I. Mirenda-Deller
 Janet (Athanasidy '82) & Edward Moran

PATRON MEMBER

A. J. Contento

PARTNER

Thomas F. La Porta
 John J. Nicotra

ASSOCIATE

Nora C. Alvarez
 Jeanette Guillen-Morin

THE CENTURY CLUB

Kathryn L. D. Hutchinson
 Eileen M. (Cartwright) Manzi
 Catherine (Schaller) Mazzaro
 Robert C. Philipps
 Lourdes E. Saladini-Fajar

SPELLMAN RED & WHITE

Peter E. Biolsi
 Lynn M. (Frisina) Brickman
 Luigi D'Ancona
 Gerda Dautner-Bensburg
 Maria E. (Conetta) Fischer
 Deborah J. (Mallett) Hand
 Christopher Malkin
 Anne-Marie Norberto
 Jorge L. Sanchez
 Margaret L. (Jennings) Weinmiller

CLASS OF 1983**LAUREATE MEMBER**

Robert C. Graham
In Honor of Marilyn Rapp

PATRON MEMBER

Robert J. Vessecchia

PARTNER

Thomas J. Halloran
 James M. Lavoie

ASSOCIATE

Stephanie A. (Raimondi) Hoina

THE CENTURY CLUB

Donna M. Alfieri-Timmes
 Stephen J. Fabrizi
 Maria E. Fernandez-Williams
 Lisa V. (Latronica) Pomeroy
 Rosemary J. (Napolitano) Scalera
 Rita (Reynolds) Silverberg
 Sheila A. (Gorman) Sullivan

SPELLMAN RED & WHITE

Peter Caliendo
 Teresa O. (Torres) Lesieutre
 M. Kim Lindley-Soucy
 George P. McDonnell
 Marie (Scalera) McKeown
 Amy E. (Lippi) Ricciardi
 John F. Walker
 Christopher L. Weiss

CLASS OF 1984**SPELLMAN ENDOWER**

Anonymous

DISTINGUISHED MEMBER

Elizabeth A. (McKiernan) Healy

PATRON MEMBER

Christina (Holder) Ahern
Mary J. (Lane) Taylor

PARTNER

Cerrone M. Barrow Simpkins
John P. Ruddy

ASSOCIATE

Barbara (Lavin) Essig
John R. Kilroy
Donna A. LaSpina

THE CENTURY CLUB

Elizabeth M. (Shea) Ahern
Donna (Mason) Cirulli
Cheryl L. Clark
Mary Ann (Sullivan) Doyle
Margaret S. Hickey-Marco
Lauren M. (Jamison) Huber
Rosemarie A. (Malone) Imburgia
Raymond A. Kraus
Dawn L. Leak

Laura (Ricuito) Marino
Margaret M. McEvily
Thomas F. Orrico
Christine E. (Capron) Puelle
Giovanna A. (Boiano) Pulver
Angela (Siano) Scambia
Joseph P. Scambia
Michele A. Schum
Margaret M. (Brady) Tannian
Nilsa Vazquez
Marianne (Lizzo) Ventrice

SPELLMAN RED & WHITE

Christine A. (Marry) Brennan
Gina (Velella) Caliendo
Claire (Malone) Cavalli
Lee W. Clark
Kim B. (Guilmette) Delucia
Elizabeth A. Flanagan
Maria C. Garcia
Carmelina (Dicristofaro) Ljubichich
Christina M. (Braca) Malkin
Joseph B. McMahan
Matthew J. Munch
Margaret M. Nugent
Dawn K. C. Pemberton
Carla M. (DeLorenzo) Scipioni
Patrick M. Stranzl
Marisol Torres
Joseph N. Videtto

CLASS OF 1985

DISTINGUISHED MEMBER
Leonard A. Boccia, Jr.

LAUREATE MEMBER

Federico J. Martinez
In Memory of Roberto A. Trillo '83

PARTNER

Liam J. McLaughlin
David A. Rodriguez

ASSOCIATE

Kathleen Cappelli
Sean G. Doherty
Ronald P. Essig
Seamus E. McElearney
David M. O'Sullivan

Maria M. Porco-Rosa
Peter H. Stone
William P. Treanor
John T. Walsh

THE CENTURY CLUB

Silvio Balzano
Vincenzo N. De Santis
John Doyle
Colette (Corbett) Mocuiski
Siobhain C. (Lyons) Towell

SPELLMAN RED & WHITE

Joseph R. Bartels
Carlos F. Encalada, Jr.
Anne N. (Collins) Griffin
Marilyn (Docherty) Knapp
Robert Knapp

CLASS OF 1986

LAUREATE MEMBER
Nicole D. Jordan

PATRON MEMBER

Richard C. Pettus

PARTNER

Karen A. (Sullivan) Fogarty
Karen A. Hentschel-Franks

ASSOCIATE

Vincent R. Greco
John L. Krase
Angelicque M. Moreno-Avanzino
Michael B. Moschetta
Michael J. Murray
Michael J. Pagan

THE CENTURY CLUB

Margaret M. Coughlan
Omar E. Diaz
Nerlande LaFontant
Steven T. Martz
Denis M. Noonan
J.P. (Moran) Noonan
Patrick W. Quinn
Tara A. (O'Dwyer) Sweeney

SPELLMAN RED & WHITE

Lisa Carnevale
Eileen M. Cruz
Christine Mazzella
Martha M. (Perez) Perez
Allison P. Scholar
Steven E. Stranzl
Kimberly S. Varner

CLASS OF 1987

DISTINGUISHED MEMBER
Tara A. Maguire

PATRON MEMBER

Elizabeth M. Garvey

PARTNER

Angela Gonzalez

ASSOCIATE

Cosette Gutierrez

THE CENTURY CLUB

Kimberley K. (Burgess) Capers
In Memory of Michael W. Scott '87
Rita M. Carstens-Hall
Luigi J. Fata
Gina (Monaco) Ferri
Angelo Mamone, Jr.
Karen (Flynn) Murray
Gabriella (Pichardo) Paulovich
Sandra Reekstin-Mendez
In Memory of Michael W. Scott '87
Margaret J. Reichlin-Battle
Ricardo J. Ronda
In Memory of Roberto A. Trillo '83

SPELLMAN RED & WHITE

Ina J. (Kurcz) Barish
Sheila P. (Goulding) Serafin

CLASS OF 1988

LAUREATE MEMBER
Karen Wright Sanders

ASSOCIATE

Craig L. (Jones) Antelmi
Susan M. Cardillo
Marco J. Castaldi
Dominic Cipollone
Anonymous

THE CENTURY CLUB

Anna M. Cinnamo
Darrick B. Fuller
Jennifer (White) Martz
Dean (Meminger) Mayo
Anthony M. Nunez

SPELLMAN RED & WHITE

Wanjuri Hawkins
Maria (Arlia) Rocco

CLASS OF 1989

PRINCIPAL'S CIRCLE
Christian C. Reynolds

PARTNER

Carlene L. Laing
Maura J. Romita Skrapits
Chanemia K. Singleton '89
*In Memory of Ms. Earline Singleton,
Loving Mother*

ASSOCIATE

Michele J. Caputo-Zerafa
Howard G. Lindsay

THE CENTURY CLUB

Steven R. Bertuzzi
Suzanne P. (McNamee) Snyder
Alex E. Vasquez
Maureen R. (Evers) Willox

SPELLMAN RED & WHITE

Denis Kiely
Mary P. Ludwig
Simone N. (Austin) Peoples
Colleen S. Williams

CLASS OF 1990

PARTNER
Gerald Cimador
Jennifer K. Yancey

ASSOCIATE

James S. Cimador
James J. Keary

THE CENTURY CLUB

Marc A. Anello
Alicia (Cavaliere) Balzano
Richard C. Shaw

SPELLMAN RED & WHITE

Cerlinde Chahin
Manish Jacob-Joseph
Deirdre E. Madden
Bryan W. Robinson

CLASS OF 1991

DISTINGUISHED MEMBER
Pattiann McAdams-Russell

PARTNER

Troy D. Benjamin
Elizabeth (Kirchmann) Franco

THE CENTURY CLUB

Donna M. Green
Rudy (Gile) Sanchez
Christina (Gallego) Shaw
Donato Signore

SPELLMAN RED & WHITE

Raymond Perez
In Memory of Roberto A. Trillo '83
Luisa A. (Crespo) Rosario
Eric Wong
In Memory of Roberto A. Trillo '83

CLASS OF 1992

PARTNER
Brian O'Connell

ASSOCIATE

Bernardo F. Duque
Kamella D. English
Tanya M. Myers

THE CENTURY CLUB

Debra (Symulevich) Adler
In Memory of Roberto A. Trillo '83
Anthony Ardis, Jr.
Lynette (D'Agnelli) Ardis
Michael Barbosa
Jeannine (Solanto) Parise

SPELLMAN RED & WHITE

Cathleen K. (Dobbs) Curtin
Maria DeBartolo
Fortunata Lardo-DiMarco

CLASS OF 1993

ASSOCIATE
Sandra (Acosta) Robinson
Catalina Vazquez

THE CENTURY CLUB

Meredith Aull
Brian A. Badillo
Andrea Garin Kopilak
Paula Reid
Camelia A. (Pena) Rivera

CLASS OF 1994

ASSOCIATE

Ruben Lopez, Jr.
Wanda (Vasquez) Lopez

THE CENTURY CLUB

Michelle Conway-Breimer
Karen Daniels
Avianca L. (Olivieri) Greenwell
Doreen Mirante
Denise E. (Garcia) Simpson
Eileen Sullivan-Hernandez

SPELLMAN RED & WHITE

Sandra Nesbitt
Heather (Palmieri) Reilly
Amanda L. Seon-Walker
Collin Smith

CLASS OF 1995

LAUREATE MEMBER

Kathy (Urena) Martinez
In Memory of Roberto A. Trillo '83

ASSOCIATE

Damaris De Los Santos

THE CENTURY CLUB

Allen Meza
Sharon V. Rivera
Jose A. Stevenson

SPELLMAN RED & WHITE

Morning H. (Johnson) deBruin
Keisha K. Glenn-Hutton
Carolyn Hehir
Javier LaBorde
Marie M. (Olivares) McLaughlin
Elizabeth M. (Zecchin) Rasko
LaShawna K. Thompson

CLASS OF 1996

DISTINGUISHED MEMBER

Kristen L. Gudewicz

ASSOCIATE

Jennifer B. Rivera

THE CENTURY CLUB

Gian-Franco DiLaura
Gina (Ruggiero) DiLaura
Margaret Y. Ellis
Adrienne M. Marquez

CLASS OF 1997

PATRON MEMBER

Philip J. Raciti

ASSOCIATE

Gerald J. Doherty

THE CENTURY CLUB

Susan M. Burns

CLASS OF 1998

THE CENTURY CLUB

Blair K. Robinson

SPELLMAN RED & WHITE

Camille Y. Kinlock

CLASS OF 1999

THE CENTURY CLUB

Haifa B. Matos-Elefonte
Kathryn M. Reilly-Casali
In Memory of Michael A. Donoghue '78

SPELLMAN RED & WHITE

Stephanie Amoh
Erica (Pagnozzi) Zippo

CLASS OF 2000

THE CENTURY CLUB

Erica E. Popp

SPELLMAN RED & WHITE

Anthony F. Cortese
Crystal (Lombardi) Cortese
Christian Del Toro

CLASS OF 2001

PARTNER

Jason J. McCalla

THE CENTURY CLUB

Jody A. Lyn

SPELLMAN RED & WHITE

Allyson M. Crespo
Stephanie N. Fobi
Cesar E. Pellerano II

CLASS OF 2002

THE CENTURY CLUB

Rosalie (Maiale) Frison
Meredith Masciotti
Jennifer A. Privitera

SPELLMAN RED & WHITE

Erin M. (McGuire) Settanni
Amanda J. Trezza

CLASS OF 2003

SPELLMAN RED & WHITE

Lulaine G. Compere
Antoinette C. Harris
Elyse M. Torres

CLASS OF 2004

DISTINGUISHED MEMBER

Amelia F. Featherstone

LAUREATE MEMBER

Lesley M. Gaudio

THE CENTURY CLUB

Michael R. Mojer

SPELLMAN RED & WHITE

Erica Barbot
Natalie Benoit
*In Memory of Stacy (McDonald)
DeRizzo '04*

Katherine (Benoit) Del Toro

*In Memory of Stacy (McDonald)
DeRizzo '04*

Stephen A. Fletcher
Nicole Lynn G. Guanlao

*In Memory of Stacy (McDonald)
DeRizzo '04*

Renee S. Hamilton

*In Memory of Stacy (McDonald)
DeRizzo '04*

Daniella R. Ingenito

*In Memory of Stacy (McDonald)
DeRizzo '04*

Bernadette M. Nesto

*In Memory of Stacy (McDonald)
DeRizzo '04*

Gigio K. Ninan

*In Memory of Stacy (McDonald)
DeRizzo '04*

Nicole M. Petralia-Fernandez

*In Memory of Stacy (McDonald)
DeRizzo '04*

Jamie M. (Amador) Ryan

*In Memory of Stacy (McDonald)
DeRizzo '04*

Jennifer (Mazza) Vairo

*In Memory of John Featherstone
Anthony M. Wade*

*In Memory of Stacy (McDonald)
DeRizzo '04*

CLASS OF 2005

PARTNER

Carla E. DeMarzo-Sanchez
*In Honor of the DeMarzo-Sanchez
Family*

THE CENTURY CLUB

John A. Cortez, Jr.

CLASS OF 2007

LAUREATE MEMBER

Stacey C. Acevedo
In Honor of Rev. Trevor Nicholls

PARTNER

Wendy J. De La Rosa

THE CENTURY CLUB

Elizabeth A. Batista
Salvatore M. DiMauro
Cindy E. Zuniga

CLASS OF 2008

THE CENTURY CLUB

Bianca Naco

SPELLMAN RED & WHITE

Gabriella A. Fiorentino

CLASS OF 2009

THE CENTURY CLUB

Sophia M. Ponce

SPELLMAN RED & WHITE

Julie A. Fuentes
Stephanie C. Ortiz
Natalee Rivera

CLASS OF 2010

THE CENTURY CLUB

William Kyle Krynicki

SPELLMAN RED & WHITE

Michelle A. Boncardo
Melika J. Hart

CLASS OF 2012

SPELLMAN RED & WHITE

Rosalie B. Hume

CLASS OF 2013

SPELLMAN RED & WHITE

Khalfani E. Clemetson
Jessica M. DiGiacomo
Andrew T. McAllister

CLASS OF 2014

THE CENTURY CLUB

Jehieli Olivares

SPELLMAN RED & WHITE

Brittany A. Stanley

Friends

DISTINGUISHED MEMBER

CSHS Class of 1984 - 30th Anniversary
Reunion
Higgins Paskas Charitable Trust

LAUREATE MEMBER

John Alexander
Rosemary Campion
Cardinal Spellman Class of 2014
Cardinal Spellman High School
Alumni/Development Office
Brother Tyrone Davis, C.F.C.
Family and Friends of Roberto Trillo
In Memory of Roberto A. Trillo '83
Samuel & Ayris Granby, Jr.
Rev. Trevor & Mrs. Marion Nicholls
Daniel P. & Lucille O'Keefe
Fred Santore

PATRON MEMBER

Richard A. & Diana Amato
CSHS Class of 2004 - 10th Anniversary
Reunion
Regina Galligan
Peter A. Luongo
Paul G. McManus

PARTNER

David S. & Sara (Trillo) Adams
In Memory of Roberto A. Trillo '83
Rocco Basile
Robert Braumuller
Louis & Vivian Brescia
CSHS Class of 1964 - 50th Anniversary
Reunion
CSHS Class of 1974 - 40th Anniversary
Reunion
CSHS Class of 1979 - 35th Anniversary
Reunion
CSHS Class of 1989 - 25th Anniversary
Reunion
Cardinal Spellman High School Alumni
Association
Cardinal Spellman High School
Basketball
William Cawley
Frank Palfy, Jr.
Becky Schiazza
Michael C. Shoemaker
In Honor of Rafael Collado '72
Terrence P. Yanni & Laurie N.
Lechthaler

ASSOCIATE

Kathleen M. Alexander
*In Honor of Staff at Columbia
 Presbyterian & Phelps Rehabilitation
 & Dominican Sisters of Visiting
 Nurse Program*

Linda A. Calacone
In Honor of Fred Calacone

CSHS Class of 1969 - 45th Anniversary
 Reunion

Cardinal Spellman High School Parent's
 Association

Jalil R. Dawson
 Joseph & Margaret Giacomponello
 Brother Bernard Hanson, F.S.C.
*In Memory of the 62 DeLaSalle
 Christian Brothers who served at
 CSHS 1959-1975*

Scott McElhone
In Memory of Antonio (Sam) Artime

Juan Moreiras
In Memory of Roberto A. Trillo '83

Marie Murray
 Frank & Dolores Ortiz
 Carlos E. & Olga Pozo, Jr.
In Honor of Rafael Collado '72

Rev. Francis J. Principe
 Timothy B. Rivlin
 Paulette M. Sirakos
*In Loving Memory of my Parents and
 Sister*

Kathleen Steves
 Robert Steves
 Mary A. Sullivan
 Juan Trillo
In Memory of Roberto A. Trillo '83

Donald Van Bomel
 Nikolaos Ziozis
 Eric H. Zurla

THE CENTURY CLUB

William Alewine
 Joseph Alfano
 Jeffrey A. & Karen Basler
 Concetta Bazzano
 James & Jane Bello
 Maureen Boccia
 George & Liz Brengel
 Chulundon Brown
 Charlene Burdi
In Memory of Rose Delli Paoli

Loretto Campbell
In Memory of Rose Delli Paoli

Cardinal Spellman High School Library
 Staff

Cardinal Spellman High School -
 Science Department

Rosemarie S. Carr
In Memory of Michael W. Scott '87

Nancy K. Cestare
 Vincent & Margaret Coulter
 Janie K. Davis
 Dawn DiGiacomo
 Nicholas & Cathleen DiMuro
 John W. Farrell
 Timothy J. & Lisa Flynn
 Kim Gajda
 Maureen Gallagher
 Roger & Anne Gauvin
 Deirdre Gibbons

Mary Ann Giorgio
In Memory of Rose Delli Paoli

Carmen Gomez-Cuevas
 Barbara Gordon
 Michael & Mary Halloran
 Marguerite Heyer
In Memory of Rose Delli Paoli

Harold J. Hoffmann
 Amy Hornick
In Memory of Rose Delli Paoli

Trudy Keane
 Kenneth & Theresa Kelly
 Andrew S. Kenward
 Rev. John Kraljic
 John & Dawn Krupa
 Philip J. & Lynda Lundrigan
*In Memory of Rosann (Tagliaferro)
 O'Reilly '66*

James & Margaret Mack
 Vincent P. & Susan Mancino
 Barbara J. Marsh
 Steven & Barbara Mauceri
 Migdalia McCalla
 Andrew McCarrick
 Michael & Joyce McGovern
 James Murphy
 Mary E. O'Keefe
 Rita & Paul Piliero
 Helen Piovesan
 Annmarie Platt
 Thomas & Frances Qualter
 Kenneth Quann
 Eugene D. & Elizabeth Rahilly
 Zelda S. Robinson
 JoAnn Rock
 Judy Rosenstein
In Memory of Rose Delli Paoli

John P. Shanley
 Karen Sherwood
 John H. & Nancy Smith
 Eileen J. Weber
In Memory of Michael E. Butler '68

Leah Weinberger
 Jody Weller
In Memory of Michael W. Scott '87

Denice Yanni
 Lynette Zahuruden

SPELLMAN RED & WHITE

Thomas J. Amodio
 Anonymous AT&T
 Anonymous Donor
 Marybel Aponte
 Rogelio J. Arango
In Memory of Roberto A. Trillo '83

Marie Berquin-Francois
 John & Janet Boney
 Douglas & Lauren Boyle
 Ann Brady
 Marva T. Brown
 Charlene Butterfield
 Eileen Byrne
 Mary Capellini
 Marianne Carlo
 Alice M. Cavazzini
 Heidi Deveaux
 Althea Gather
In Memory of Michael W. Scott '87

Anne M. Gevlin
 Stalina Gibson
 Mary Healy

Barbara Holloway
In Memory of Michael W. Scott '87

Melissa Jacobs
 John Kavanagh
 Maryann Khinda Lombardo
 Sandra M. Kimelman
 Caitlin K. Klaum
 Jacqueline Martinez
 JoAnne McConville
 William McGovern
 Diane McNiff
 Michele Merced
 Ozie Mikel
 Rita Minelli
 Sadie Mitchell
In Memory of Michael W. Scott '87

Scott Murphy
In Memory of Antonio (Sam) Artime

Frank M. Nardone
 James Nicholson
 Pasquale Nobile
 Carol O'Donnell
 Ha Ming Ong
 Yolanda Ortiz
 Joseph Padilla
 Anatilia Pineda
 Jackie Prosper
 Scott M. Puskas
 Amparo Recio
 Ade Richardson
 Melissa Rivera
 Luis Rodriguez
 Celia Rodriguez Olivari
 Anna M. Rosamila
In Memory of Antonio (Sam) Artime

Andrew G. Shannon
In Honor of Msgr. Thomas E. Gilleece

Joseph P. & Carol Solanto
 Michael Spinelle
In Memory of Antonio (Sam) Artime

Judy Stagnitta
 Avanti Taylor-Brown
 Mary Lou Thomas
In Memory of Antonio (Sam) Artime

Mary Van Bomel Duren
 Christopher Vitale
 Angela Williams
 Mary Wirth
 Robert F. Yanni

PATRON MEMBER

211 Mamaroneck Avenue Restaurant
 LLC
 Corporate Electric Group Inc.
 Culinary Group
 East Coast Power & Gas
 Hughes & Hughes Contracting Corp.
 Signature Bank

PARTNER

B.I. Ink, Inc.
 CINTAS Corporation
In Honor of Gerald S. Adolph '71

FACTS Mgmt. - Nelnet Business
 Solutions, Inc
 Hudson Valley National Foundation,
 Inc.
 KW Realty Greater Nassau
 O'Connor Davies, LLP
 Side Street, Inc.
 Turn 2 Foundation, Inc
 Yonkers St. Patrick's Day Parade on
 McLean Avenue

ASSOCIATE

Alpine Woods, L.P.
 American Hose & Hydraulic Co., Inc.
 Bell Environmental Services
 Changing Our World, Inc.
 Cold Mix Manufacturing Corp.
 Constantine Law Firm
 DelBello Donnellan Weingarten Wise &
 Wiederkehr, LLP
 Donoghue, Healy and O'Sullivan Travel
 Agency, Inc.
 Fleetwood Student Sales Inc
 LIM College
In Memory of Robert F. Yanni

Lincoln Financial Group
 MorganStanley SmithBarney Employee
 Giving Program
 Natural Hair.Org
 New York Athletic Club
 Stop & Shop A+ School Rewards
 Walt Disney World Co.

THE CENTURY CLUB

A.T.B. Fine Artists & Designers, LLC
 Curves of Confidence
 G Painting Corp
 JOSTENS
 Metro Team Outfitters
 Nickace Inc.
 Posto 22 Restaurant and Wine Bar
 Ranger Supply Co., Inc.
 Red Lobster
 Southern Wine and Spirits
 Spirit Cruises
 Tantalizing Productions
 US Tennis Association
 Wildlife Conservation Society

SPELLMAN RED & WHITE

Live Love Liquor LLC
 New York Football Giants
 New York Jets
 New York Real Estate Development
 Corp
 New York Sky Ride
 PinkCalyx.com
 Yonkers Brewing Company

Organizations**SPELLMAN ENDOWER**

The Annenberg Foundation

PRINCIPAL'S CIRCLE

The Michael Gordon Foundation, Inc.
 Vestar Capital Partners

DISTINGUISHED MEMBER

My Three Sons Vending

LAUREATE MEMBER

Avanessians Family Foundation
 Home Box Office, Inc.
 Hudson Valley Bank
 MTV

Scholarships and Funds

FOUNDATION FOR CARDINAL SPELLMAN HIGH SCHOOL

Stacey C. Acevedo '07
 Elizabeth M. (Shea) Ahern '84
 Christina (Holder) Ahern '84
 Louis G. Altieri '68
 Richard A. & Diana Amato
 The Annenberg Foundation
 Peter M. Antoci '81
 Domenico & Valerie (Amato) Assalone '75
 Rosemarie (Muranelli) Baker '70
 Ina J. (Kurcz) Barish '87
 Veronica A. (Cullen) Barra '67
 Cerrone M. Barrow Simpkins '84
 Bell Environmental Services
 Leonard A. Boccia, Jr. '85
 Patrick G. Boyle '71
In Memory of Miriam (Boyle) Gilligan '68
 Christine A. (Marry) Brennan '84
 Christopher J. Caivano '76
 Peter ('83) & Gina (Velella '84) Caliendo
 CSHS Class of '84 - 30th Anniversary Reunion
 Ralph F. & Mary (De Sanctis) Carmosino '72
 Claire (Malone) Cavalli '84
 Cerlinde Chahin '90
 Donna (Mason) Cirulli '84
 Cheryl L. Clark '84
 Lee W. Clark '84
 Jerome A. Coleman '66
 Rafael Collado '72
 Mauro A. Contrastano '68
 Elena C. (De Marco) Coogan '72
 Kenneth P. Cooper '76
 Arthur N. Corsano '64
 John A. Cortez, Jr. '05
 Janie K. Davis
 Kim B. (Guilmette) Delucia '84
 John V. & Linda (Liberatore) DeSimone '71
 Salvatore J. Di Grandi '77
 Valerie A. DiFebo '80
 James L. Dotti '69
 John ('85) & Mary Ann (Sullivan '84) Doyle
 Stephen J. Duffy '71
 Elizabeth A. Effinger '66
 Gerald P. Fallon '69
 Laura C. Fasulo '69
 Luigi J. Fata '87
 Michael L. & Phyllis (Savino) Ferrante '64
 Kevin S. Finnegan '72
 Peg (Hedrich) Fiore '71
 Barbara J. Fling Arthur '72
 John L. Florio '73
 Laura M. Forish-Ferguson '66
 Gennaro J. Fulvio '74
 Andrea Garin Kopilak '93
 Peter F. Gelber '78
 Joan L. (Gnocchi) Gerardi '65
 Mary E. Goldsmith-Larkin '65
 Anne N. (Collins) Griffin '85
 Kristen L. Gudewicz '96
 Joanne R. Guerriero '73
 Michael & Mary Halloran

Lawrence & Teresa A. (Barrett '80) Hamdan
 Elizabeth A. (McKiernan) Healy '84
 Michael A. Heffernan '65
 John J. Hickey '72
 Anne J. (McGrory) Hofmann '69
 Susan A. (Wisowaty) Huben '74
 Rosemarie A. (Malone) Imburgia '84
 James B. Kenny '74
 Sandra M. Kimelman
 Raymond A. Kraus '84
 Diane (Miller) Kurtz '66
 KW Realty Greater Nassau
 Fortunata Lardo-DiMarco '92
 Donna A. LaSpina '84
 William F. Lawrence '69
 Rita C. (Laios) Lieberman '69
 Carmelina (Dicristofaro) Ljubicich '84
 Carol A. (Ciccimarra) Logan '69
 Joseph C. Lynch '73
 Eileen G. Lynch '81
 Deirdre E. Madden '90
 Paula A. (Williams) Madison '70
 Christopher ('82) & Christina M. (Braca '84) Malkin
 Charles A. ('69) & Laura (Impelluso '70) Maniglia
 Bruce F. Martino '73
 Dean (Meminger) Mayo '88
 Maria A. (Parran) McDonald '66
 Patrick J. McGuinness '67
 Joseph B. McMahon '84
 Anonymous '84
 Kieran P. McTague '76
 Michael R. Mojer '04
 Matthew J. Munch '84
 My Three Sons Vending
 Richard A. & Joan Di Martino Nardi '72
 New York Real Estate Development Corp
 Rev. Trevor & Mrs. Marion Nicholls Nickace Inc.
 Pasquale Nobile
 Margaret M. Nugent '84
 Brenda A. Nurse '71
 Daniel S. & Gloria (Perri) O'Connell '72
 Daniel P. & Lucille O'Keefe
 Marie O'Neill-Sheehan '79
 Cathy A. (Catanzaro) Ordway '75
 Frank & Dolores Ortiz
 Janet L. (Saccante) Partenza '70
 Martha (De Cesare) Perlmutter '70
 Pamela A. Perrone '74
 Helen Piovesan
 John E. Potter '73
 Carlos E. & Olga Pozo, Jr.
In Honor of Rafael Collado '72
 Jackie Prosper
 Christine E. (Capron) Puella '84
 Giovanna A. (Boiano) Pulver '84
 Michael J. ('63) & Barbara (Travers '65) Queenan
 Joan E. Ranallo '70
 Heather (Palmieri) Reilly '94
 Janice M. (Toterhi) Ritter '70
 Jennifer B. Rivera '96
 Celia Rodriguez Olivari
 Luisa A. (Crespo) Rosario '91
 John P. Ruddy '84
 Joseph P. & Angela (Siano) Scambia '84
 Thomas Z. Scarangelo '75
 William A. Sharp '69

Brian D. & Veronica (Toumey) Sherry '70
 Michael C. Shoemaker
In Honor of Rafael Collado '72
 Thomas J. Shoemaker '74
In Honor of Rafael Collado '72
 Chanemia K. Singleton '89
In Memory of Ms. Earline Singleton, Loving Mother
 Anonymous '72
 Judy Stagnitta
 Patrick M. Stranzl '84
 Margaret M. (Brady) Tannian '84
 James J. Tobin '71
 Marisol Torres '84
 Marie (Delgado) Travis '67
 Rosemary (Tansey) Troccoli '73
 Brian J. Tunney '65
 Kimberly S. Varner '86
 Anne F. (Winterroth) Vasile '73
 Marianne (Lizzo) Ventrice '84
 Joseph N. Videtto '84

FRED CALAICONE SCHOLARSHIP

Linda A. Calaicone

CARDINAL'S PLAYERS FUND

Marybel Aponte
 Michelle A. Boncardo '10
 Chulundon Brown
 Marva T. Brown
 John J. Bruno '81
 Marianne Carlo
 Eileen M. Cruz '86
 Heidi Deveaux
 Marsha E. Diggs '70
 Melika J. Hart '10
 Eileen M. (Cartwright) Manzi '82
 Anthony W. Marangiello '75
 Andrew T. McAllister '13
 Ozie Mikel
 James Nicholson
 Yolanda Ortiz
 Joseph Padilla
 Cesar E. Pellerano II '01
 Dawnn K. C. Pemberton '84
 Anatalia Pineda
 Annmarie Platt
 Jennifer A. Privitera '02
 Ade Richardson
 Melissa Rivera
 Bryan W. Robinson '90
 Luis Rodriguez
 Allison P. Scholar '86
 Steven E. Stranzl '86
 Avanti Taylor-Brown
 Angela Williams

CARDINAL SPELLMAN SCHOLARSHIP FUND

Rosemarie S. Carr
In Memory of Michael W. Scott '87
 Althea Gather
In Memory of Michael W. Scott '87
 Barbara Holloway
In Memory of Michael W. Scott '87
 The Michael Gordon Foundation, Inc.
 Sadie Mitchell
In Memory of Michael W. Scott '87
 Jody Weller
In Memory of Michael W. Scott '87

CLASS OF 1963 50TH ANNIVERSARY "SPIRIT OF '63 SCHOLARSHIP"

Robin A. (Sharff) Ahrens '63
 Raymond J. Biddiscombe '63
 Gerald T. Finn '63

CLASS OF 1984 - DANIEL BARDEN SCHOLARSHIP FUND

Anonymous Donor '84
 Elizabeth M. (Shea) Ahern '84
 Richard A. & Diana Amato
 Cerrone M. Barrow Simpkins '84
 Christine A. (Marry) Brennan '84
 Peter ('83) & Gina (Velella '84) Caliendo
 CSHS Class of 1984 - 30th Anniversary Reunion
 Claire (Malone) Cavalli '84
 Donna (Mason) Cirulli '84
 Cheryl L. Clark '84
 Lee W. Clark '84
 Janie K. Davis
 Kim B. (Guilmette) Delucia '84
 John ('85) & Mary Ann (Sullivan '84) Doyle

Rosemarie A. (Malone) Imburgia '84
 Sandra M. Kimelman
 Raymond A. Kraus '84
 KW Realty Greater Nassau
 Donna A. LaSpina '84
 Carmelina (Dicristofaro) Ljubicich '84
 Christopher ('82) & Christina M. (Braca '84) Malkin
 Joseph B. McMahon '84
 Matthew J. Munch '84
 New York Real Estate Development Corp

Nickace Inc.
 Pasquale Nobile
 Margaret M. Nugent '84
 Helen Piovesan
 Jackie Prosper
 Christine E. (Capron) Puella '84
 Giovanna A. (Boiano) Pulver '84
 Celia Rodriguez Olivari
 John P. Ruddy '84
 Joseph P. & Angela (Siano) Scambia '84
 Judy Stagnitta
 Patrick M. Stranzl '84
 Margaret M. (Brady) Tannian '84
 Marisol Torres '84
 Marianne (Lizzo) Ventrice '84
 Joseph N. Videtto '84

COACH OF THE YEAR TRACK SCHOLARSHIP

Pattiann McAdams-Russell '91

FATHER JAMES J. CORRIGAN SCHOLARSHIP

Rosemary Champion
 Richard A. & Joan Di Martino Nardi '72

DOMENICA "DORINA" DI LULLO '86 ANNUAL SCHOLARSHIP

Ben A. DiLullo '81

JUSTICE SONIA SOTOMAYOR '72 SCHOLARSHIP

Rafael Collado '72

LAS MADRES SCHOLARSHIP

Rafael Collado '72

Carlos E. & Olga Pozo, Jr.
In Honor of Rafael Collado '72

**CONNIE AND PAT LUONGO
SCHOLARSHIP**
Peter A. Luongo

MCGRORY SCHOLARSHIP
Anne J. (McGrory) Hofmann '69

**THE MIRACLE WORKER
SCHOLARSHIP**
Thomas Z. Scarangelo '75

**PALMER-DIMAURO ENDOWED
SCHOLARSHIP**
Gerard P. ('77) & Mary (Rogan '78)
Swikata
In Memory of Orio J. Palmer '74

**MARY ELIZABETH PERNA EN-
DOWED SCHOLARSHIP**
Janet (Athanasidy '82) & Edward Moran
Thomas F. & Theresa Perna

**MARILYN M. REYNOLDS
SCHOLARSHIP**
Christian C. Reynolds '89

**THE FRANK E. AND EDITH ZARRO
SCARANGELLO ENDOWED
SCHOLARSHIP**
David A. Hidalgo
Thomas Z. Scarangelo '75
Mary Ann (Scarangelo) Tighe '66

**THE SAL SCHIAZZA
SCHOLARSHIP FUND**
Elizabeth (Kirchmann) Franco '91
Richard A. & Joan Di Martino Nardi '72
Becky Schiazza

**THE THRESHOLD OF HOPE -
BARRETT FAMILY SCHOLARSHIP**
John V. & Linda (Liberatore) DeSimone '71
In Memory of Rev. Brian P. Barrett '71
Lawrence & Teresa A. (Barrett '80)
Hamdan

**SUPPORT OUR SPELLMAN
STUDENTS (S.O.S.S.)
SCHOLARSHIP FUND**
Gerald S. Adolph '71
Avanessians Family Foundation
Rosemarie (Muranelli) Baker '70
In Memory of Sal Schiazza '70
Jocelyn (Diggs) Burrell '67
Linda A. Calacone
CSHS Class of 2014

Emanuel ('75) & Joanne Chirico
Michael E. Costa '70
Helen M. (Zadarlik) Cousins '71
Brother Tyrone Davis, C.F.C.
Joseph P. ('71) & Mary (Doyle '72)
DeFazio
Carla E. DeMarzo-Sanchez '05
*In Honor of the DeMarzo-Sanchez
Family*
Marsha E. Diggs '70
Dawn DiGiacomo
Donna M. DiGioia '67
John T. Endres '71
FACTS Mgmt. - Nelnets Business
Solutions, Inc
John W. Farrell
Amelia F. Featherstone '04
Joseph & Margaret Giacomponello
Carmen Gomez-Cuevas
Diana (McInerney) Gorman '64
Samuel & Ayris Granby, Jr.
Kathleen M. Griffin Stack '72
George H. Hayes '66
Harold J. Hoffmann
Stephanie A. (Raimondi) Hoina '83
Lauren M. (Jamison) Huber '84
Curtis C. Johnson, Jr. '71
John M. Kiernan '68
Joseph C. Lynch '73

In Memory of Ronald J. Balma '73
Judith A. Madden '65
Meredith Masciotti '02
Pattiann McAdams-Russell '91
Margaret (McNiff) McCartney '70
Donald G. ('65) & Susan McCrossen
A Member of the Class of '74
Angelique M. Moreno-Avanzino '86
Maria (Delli Paoli) Morgan '76
*In Memory of my dad, Andrew Delli
Paoli who passed while I was a
student at CSHS*
Theresa C. (Klingner) Murphy '70
Rev. Trevor & Mrs. Marion Nicholls
Sandra (Strickland) Nichols '71
Brenda A. Nurse '71
Mary P. O'Mahony '69
Rev. Francis J. Principe
Noreen Quirk '71
Angela (Delli Poali) Renz '73
In Memory of Rose Delli Paoli
Christian C. Reynolds '89
John B. Rice '65
Rudy (Gile) Sanchez '91
John P. Shanley
Mary A. Sullivan
Marie (Delgado) Travis '67
In Honor of Joseph P. DeFazio '71
Jennifer K. Yancey '90

Terrence P. Yanni & Laurie N. Lechthaler
Denice Yanni

**PARTNERSHIP OF SUPPORT
CONTRIBUTORS**
Helen M. (Zadarlik) Cousins '71
Samuel & Ayris Granby, Jr.
Kathleen M. Griffin Stack '72
Pattiann McAdams-Russell '91
Brenda A. Nurse '71
John B. Rice '65

ACHIEVE 100 CHALLENGE RUN
Anonymous Donor
Stacey C. Acevedo '07
Denise M. (Valrosa) Albertelli '71
William Alewine
Kathleen M. Alexander
Robert E. Altomare '68
Stephanie Amoh '99
Robert W. Anderson '72
Meredith Aull '93
Michael Barbosa '92
Rocco Basile
Jeffrey A. & Karen Basler
Lisa M. (Annunziata) Bell '81
James & Jane Bello
Marie Berquin-Francois
Leonard A. Boccia, Jr. '85
Maureen Boccia
John & Janet Boney
Patrick G. Boyle '71
George & Liz Brengel
Louis & Vivian Brescia
Susan M. Burns '97
Charlene Butterfield
Eileen Byrne
Rosemary Campion
Mary Capellini
Edward P. Capper '78
CSHS Library Staff
Paul A. Carris '73
Lisabeth (Perez) Castle '81
Alice M. Cavazzini
William Cawley
Nancy K. Cestare
James S. Cimador '90
John T. Coleman '74
Michelle Conway-Breimer '94
Margaret M. Coughlan '86
Marilyn I. (Szempruch) Coyle '78
Daniel B. Crimmins '64
Cathleen K. (Dobbs) Curtin '92
Martin F. Davey '81
Maria DeBartolo '92
Carla E. DeMarzo-Sanchez '05
Nicholas & Cathleen DiMuro
Donoghue, Healy and O'Sullivan Travel
Agency, Inc.

Stephen J. Duffy '71
Margaret Y. Ellis '96
John T. Endres '71
John W. Farrell
Robert A. Faulkner '78
Gabriella A. Fiorentino '08
Karen A. (Sullivan) Fogarty '86
Rosalie (Maiale) Frison '02
Julie A. Fuentes '09
Darrick B. Fuller '88
G Painting Corp
Maureen Gallagher
Roger & Anne Gauvin
Deirdre Gibbons
Stalina Gibson
Keisha K. Glenn-Hutton '95
Barbara Gordon
Michael & Mary Halloran
Mary Healy
Carolyn Hehir '95
Stephanie A. (Raimondi) Hoina '83
Melissa Jacobs
Trudy Keane
Kenneth & Theresa Kelly
Maryann Khinda Lombardo
Caitlin K. Klaum
Robert & Marilyn (Docherty) Knapp '85
Theresa (Mastronardi) Knox '76
John & Dawn Krupa
Dorothy A. Krynicki '70
William Kyle Krynicki '10
Nerlande LaFontant '86
Marie A. Li Trenta '65
Claudia Longo '75
Ruben & Wanda (Vasquez) Lopez, Jr. '94
Joseph C. Lynch '73
James & Margaret Mack
Vincent P. & Susan Mancino
Kevin W. Mangan '70
Charles A. ('69) & Laura (Impelluso '70)
Maniglia
John W. Manning '66
Anthony W. Marangiello '75
Peter D. Marghella '79
Adrienne M. Marquez '96
Barbara J. Marsh
Jacqueline Martinez
Steven T. ('86) & Jennifer (White '88)
Martz
Steven & Barbara Mauceri
John F. McCabe '80
Josephine R. (Sage) McCaffrey '81
Migdalia McCalla
Andrew McCarrick
John P. ('71) & Marie (Heaney '69)
McCarrick
JoAnne McConville
Terence J. McCormack '63
Michael & Joyce McGovern

THANK YOU FOR GIVING TO CARDINAL SPELLMAN HIGH SCHOOL

Donations can be made online at the Spellman website
www.cardinalspellman.org or by mail.

Checks can be made out to Cardinal Spellman High School and mailed to the attention of the
Advancement Office, CSHS, One Cardinal Spellman Place, Bronx, NY 10466.

William McGovern
 Paul G. McManus
 Therese D. McNicholas '84
 Diane McNiff
 Michele Merced
 Metro Team Outfitters
 Allen Meza '95
 Christina M. (Gagliano) Miller '75
 Rita Minelli
 Enrique H. Monsanto '68
 James Murphy
 Michael J. Murray '86
 Martin T. Mylott '71
 Karen P. (Savolt) O'Brien '66
 John G. O'Hara '78
 Mary E. O'Keefe
 Gerard P. O'Neill '71
 Ha Ming Ong
 Stephanie C. Ortiz '09
 Rita & Paul Piliero
 Erica E. Popp '00
 Scott M. Puskas
 Thomas & Frances Qualter
 Philip J. Raciti '97
 Eugene D. & Elizabeth Rahilly
 Amparo Recio
 Cynthia M. Reed '75
 John B. Rice '65
 Camelia A. (Pena) Rivera '93
 Timothy B. Rivlin
 James J. Roberts '79
 JoAnn Rock
 John P. Ruddy '84
 Margaret T. Ruiz '69
 Lourdes E. Saladini-Fajar '82
 Donato ('73) & Anna Marie Settanni '73
 Erin M. (McGuire) Settanni '02
 Karen Sherwood
 Deborah T. Shinnick '72
 Rita (Reynolds) Silverberg '83
 Chanemia K. Singleton '89
*In Memory of Ms. Earline Singleton,
 Loving Mother*
 Joseph P. Sinnott '79
 John H. & Nancy Smith
 Suzanne P. (McNamee) Snyder '89
 Brendan J. Spillane '81
 Brittany A. Stanley '14
 Jose A. Stevenson '95
 Robert Steves
 Sheila A. (Gorman) Sullivan '83
 Eileen Sullivan-Hernandez '94
 Tara A. (O'Dwyer) Sweeney '86
 Siobhain C. (Lyons) Towell '85
 Mary Van Bomel Duren
 Julio J. Vazquez '70
 Catalina Vazquez '93
 Christopher Vitale
 Eileen J. Weber
In Memory of Michael E. Butler '68
 Mary Wirth
 Karen Wright Sanders '88
 Terrence P. Yanni & Laurie N. Lechthaler
 Erica (Pagnozzi) Zippo '99
 Denise (McCormick) Zungoli '75
 Cindy E. Zuniga '07

ANN'S LUNCH BOX

Kathleen M. Alexander
 Anonymous Donor
 Craig L. (Jones) Antelmi '88
 Maria I. Artime '77

Silvio ('85) & Alicia (Cavaliere '90)
 Balzano
 Mara (Rufino) Bannard '65
 Nancy A. Boland '67
 Lynn M. (Frisina) Brickman '82
 Kathleen Cappelli '85
 Anna M. Cinnamo '88
 Charles J. Clark '76
 John T. Coleman '74
 Carol T. Crida '72
 GraceAnne (Andreassi) DeCandido '65
 Carla E. DeMarzo-Sanchez '05
 Gian-Franco & Gina (Ruggiero) DiLaura
 '96
 Kamella D. English '92
 Margaret M. (Fleming) Fahy '64
 John & Maureen (Garvey '70) Falconi
 Renee Ferrante-Fiorenza '72

In Memory of Robert F. Yanni

Marie C. (Mirenda) Flom '68
 Timothy J. & Lisa Flynn
In Memory of Robert F. Yanni
 Regina Galligan
 Joseph & Margaret Giacomponello
 Lisa (Tarallo) Gillies '80
 Lizbeth Gonzalez '70
 Diana (McInerney) Gorman '64
 Marian T. (Sabatiello) Hester '72
 Michael G. & Eileen (Gambone) Justino
 '74
 Suzanne (DiGrandi) Kates '78
 John Kavanagh
 John M. Kiernan '68
 Camille Y. Kinlock '98
 LIM College

In Memory of Robert F. Yanni

Warren L. Lyons '66
 Anthony J. Masiello '68
 Scott McElhone
In Memory of Antonio (Sam) Artime
 Maureen McGuire '67
 Anonymous '88
 Joan D. Messina Shen '76
 Scott Murphy

In Memory of Antonio (Sam) Artime

Michael J. Murray '86
 Patricia E. Nealon '71
 Denis M. & J.P. (Moran) Noonan '86
 Brenda A. Nurse '71
 Carol O'Donnell
 William F. X. Oleske '69
 Jehiely Olivares '14
 Charles J. Pignatelli '70
 Rita & Paul Piliero

In Memory of Robert F. Yanni

Karen A. Pollastrino '72
 Barbara A. (Grogan) Quiros '75
 Kathleen M. (Hooper) Regan '66
 Margaret J. Reichlin-Battle '87
 Paula Reid '93
 Christine T. (Pluta) Rinaldi '70
 Anna M. Rosamilia

In Memory of Antonio (Sam) Artime

Mary Ellen (Bruciani) Schaeffer '69
 Becky Schiazza
 Chanemia K. Singleton '89
*In Memory of Ms. Earline Singleton,
 Loving Mother*
 Michael Spinelle

In Memory of Antonio (Sam) Artime

Gerard P. ('77) & Mary (Rogan '78)
 Swikata

Beatriz (Diaz) Taveras '77
 Mary J. (Lane) Taylor '84
 Mary Lou Thomas
In Memory of Antonio (Sam) Artime
 Elyse M. Torres '03
 Marie (Delgado) Travis '67
 Nilsa Vazquez '84
 Lisa (Payne) Wansley '80
 Terrence P. Yanni & Laurie N. Lechthaler
 Robert F. Yanni
 Lynette Zahuruden

ALUMNI & FRIENDS 2014 GOLF OUTING

Cardinal Sponsor
 Daniel S. & Gloria (Perri) O'Connell '72
 Brendan J. Spillane '81
 Vestar Capital Partners

Gift Bag Sponsor
 Home Box Office, Inc.

Closest to Pin Sponsor
 Culinart Group

Cart Sponsor
 East Coast Power & Gas

Beer Hole Sponsor
 Cardinal Spellman High School Alumni
 Association

Hole Sponsor
 Alpine Woods, L.P.
 Michele J. Caputo-Zerafa '89
 Cardinal Spellman High School Parent's
 Association
 William Cawley
 Changing Our World, Inc.
 Cold Mix Manufacturing Corp.
 Constantine Law Firm
 DelBello Donnellan Weingarten Wise
 & Wiederkehr, LLP
 Donoghue, Healy and O'Sullivan Travel
 Agency, Inc.
 Lincoln Financial Group
 Liam J. McLaughlin '85
 O'Connor Davies, LLP
 Ranger Supply Co., Inc.
 Signature Bank
 Donald Van Bomel

Donation
 Rev. Francis J. Principe
 James J. Roberts '79

GIFTS IN KIND
 A.T.B. Fine Artists & Designers, LLC
 B.I. Ink, Inc.
 Curves of Confidence
 Fleetwood Student Sales Inc
 JOSTENS
 Live Love Liquor LLC
 Natural Hair.Org
 New York Football Giants
 New York Jets
 New York Sky Ride
 PinkCalyx.com
 Posto 22 Restaurant and Wine Bar
 Red Lobster
 Signature Bank
 Southern Wine and Spirits
 Spirit Cruises

Tantalizing Productions
 Turn 2 Foundation, Inc
 US Tennis Association
 Walt Disney World Co.
 Wildlife Conservation Society
 Yonkers Brewing Company

PARENT OF ALUMNI

James & Jane Bello
 Maureen Boccia
 Louis & Vivian Brescia
 Vincent & Margaret Coulter
 Luigi D'Ancona '82
 Dawn DiGiacomo
 Nicholas & Cathleen DiMuro
 Renee Ferrante-Fiorenza '72
 Peg (Hedrich) Fiore '71
 Michael T. Furnari '76
 Joan L. (Gnocchi) Gerardi '65
 Joseph & Margaret Giacomponello
 Diane F. Giorgi '73
 Mary Jane Hall-Gorges '67
 Michael & Mary Halloran
 Lauren M. (Jamison) Huber '84
 Charles H. ('73) & Jennifer (Lizzo '74)
 Johnson
 Peter A. Luongo
 Joseph C. Lynch '73
 James & Margaret Mack
 Barbara J. Marsh
 Jacqueline Martinez
 John P. ('71) & Marie (Heaney '69)
 McCarrick

JoAnne McConville
 Diane McNiff
 Rita Minelli
 John G. O'Hara '78
 Frank & Dolores Ortiz
 Richard J. ('68) & Carol (Barozzi '70)
 Popp
 Eugene D. & Elizabeth Rahilly
 Victoria Rizzo Nikou '71
 Lourdes E. Saladini-Fajar '82
 William J. Servedio '73
 Michael F. Shadwick '68
 Joseph P. & Carol Solanto
 Edward J. Vincenzi, Sr. '67

Leaving a Legacy

SEQUERE DEUM SOCIETY MEMBER

Debra Chinnery Smith '85
 A. J. Contento '82
 Rev. Francis J. Corry '65
 Helen M. (Zadarlik) Cousins '71
 Eileen M. Cruz '86
 Laura M. Forish-Ferguson '66
 Thomas A. Fumarelli '73
 Paula A. (Williams) Madison '70
 Adeline Marsicano Greenfeld '69
 Joanne M. Mastropolo '66
 Sal & Rita (Sicurella) ('72) Milo
 Bettina M. Miraglia '66
 Edward P. Moser '73
 Martin T. Mylott '71
 Sandra (Strickland) Nichols '71
 Lisa M. Raiti '75
 Patricia A. (Cappelli) Roberts '67
 Paulette M. Sirakos
 Rev. Msgr. James P. Sullivan
 Bernadette M. (Giangrossi) Weidman '77

Foundation & Corporate Support

211 Mamaroneck Avenue Restaurant LLC
Alpine Woods, L.P.
American Hose & Hydraulic Co., Inc.
The Annenberg Foundation
Avanessians Family Foundation
Bell Environmental Services
Changing Our World, Inc.
CINTAS Corporation
Cold Mix Manufacturing Corp.
Constantine Law Firm
Corporate Electric Group Inc.
Culinart Group
DelBello Donnellan Weingarten Wise & Wiederkehr, LLP
Donoghue, Healy and O'Sullivan Travel Agency, Inc.
East Coast Power & Gas
FACTS Mgmt. - Nelnet Business Solutions, Inc.
G Painting Corp
Higgins Paskas Charitable Trust
Home Box Office, Inc.
Hudson Valley Bank
Hudson Valley National Foundation, Inc.
Hughes & Hughes Contracting Corp.
KW Realty Greater Nassau
LIM College
Lincoln Financial Group
Metro Team Outfitters
The Michael Gordon Foundation, Inc.
MorganStanley SmithBarney Employee Giving Program
MTV
My Three Sons Vending
New York Athletic Club
New York Real Estate Development Corp
Nickace Inc.
O'Connor Davies, LLP
Ranger Supply Co., Inc.
Side Street, Inc.
Signature Bank
Stop & Shop A+ School Rewards
Vestar Capital Partners
Yonkers St. Patrick's Day Parade on McLean Avenue

Matching Gift Corporations

American Express Foundation
American International Group, Inc.
Ameriprise Financial
The AXA Foundation
Bank of America Matching Gifts Program
The Bank of New York Mellon
Bristol-Myers Squibb Foundation
Chevron
Deutsche Bank Americas Foundation
Factory Mutual Global
Genentech, Inc.
General Electric Foundation
Goldman, Sachs & Co.
IBM Corporation

J.P. Morgan Chase Foundation
The J.P. Morgan Chase Foundation
Marsh & McLennan Companies Inc
New York Life Foundation
OppenheimerFunds, Inc.
The Pfizer Foundation
Pitney Bowes World Headquarter
The Prudential Foundation Matching Gifts Program
Shell Oil Company Foundation
TIAA-CREF
Time Warner
UBS Warburg
The Vanguard Group Inc.
Verisk Analytics
Verizon Foundation
Wells Fargo Bank

CARDINAL'S PATRON SOCIETY

Our most loyal donors who have made gifts to Spellman for ten or more years consecutively.

David S. & Sara (Trillo) Adams
Gerald S. Adolph '71
Mary A. Aloisio '67
Joseph J. Altieri '65
Robert E. Altomare '68
Lorraine Ambrosecchio '68
John R. Ambroseo '79
American Express Foundation
Rosemarie (Muranelli) Baker '70
Mara (Rufino) Bannard '65
Veronica A. (Cullen) Barra '67
Richard T. & Rosemarie (Speranza) Benderoth '63
Frank Bernabo '76
Mark M. Bianco '74
Raymond J. Biddiscombe '63
Francis S. Billak '65
G. A. Ben Binninger '66
Patricia A. Binninger '66
Maria A. Bologna '77
Salvatore A. Bongiorno '79
Omar C. Bordatto '66
Patrick G. Boyle '71
Marie B. (Hickey) Brennan '79
Thomas J. Brennan '65
William L. Bricker, Jr. '65
Thomas F. Briody '65
Stephen & Mary (Morley) Brunetti '79
James T. Buonincontri '74
Jane (Ward) Burns '66
Jocelyn (Diggs) Burrell '67
Andrew M. Calamari '78
Lucia A. Calvano '66
Rosemary Campion
Thomas A. Carielli '73
Frank A. ('74) & Diane (Leotta '77) Carra
Paul A. Carris '73
Mary Frey Cashin & John M. Cashin '65
Joseph E. ('78) & Clare (McMorrow '75) Castro
Marta Ceballos '68
Gaspard J. Cerullo '72
Joseph Chiaromonte '72
Richard L. Chiesa '67
Emanuel ('75) & Joanne Chirico
Eugene P. Cilento '79
John B. Clark '68
Virginia M. (Diodati) Colangelo '66
Waldemar A. Comas '68

Clare A. Connor-Hughes '80
Mauro A. Contrastano '68
Kenneth P. Cooper '76
John H. Coords '73
Arthur N. Corsano '64
Joseph J. Costello Jr. '66
Mary D. (Fleming) Courtney '68
Paul G. Cregan '79
Carol T. Crida '72
Kathleen (Crowley) Crowley '79
Charles J. Cullen '79
Peter J. Cusack '65
Edward N. ('75) & Antonella De Lia
Peter F. De Nicola '72
Salvatore J. Di Grandi '77
Teresa M. Di Mauro '75
John J. DiBiase '71
Mary T. DiBiase Blaich '69
Ben A. DiLullo '81
Joseph N. DiMaria '81
Denise M. Dobbins-Kowalik '80
Timothy M. Dodd '74
Robert J. Doonan '64
James L. Dotti '69
Maryanne T. (Ryan) Dowd '71
Mary Ann Dowling-Hernandez '65
Patti Doyle-Gallucci '75
Robert E. Drake '65
Stephen J. Duffy '71
Stephen T. ('74) & Maureen Eble
Elizabeth A. Effinger '66
Robert A. Ellis '68
Ronald L. Ellis '68
Carlos F. Encalada, Jr. '85
John T. Endres '71
Stephen J. Fabrizi '83
Factory Mutual Global
Alfred G. Feliu '74
Elizabeth C. (Devenuto) Fels '73
Dalma Fernandez '73
Michael L. & Phyllis (Savino) Ferrante '64
Noreen F. Bedini Ferrante '76
Carol A. (Wohlgemuth) Ferrara '66
Kevin S. Finnegan '72
Joseph J. Finora '78
Peg (Hedrich) Fiore '71
Patricia M. (Breiter) Foran '70
Edson L. Ford '65
Joseph C. Furnari '66
Peter H. Garbincius '66
Patrick A. Garvey '74
Patricia J. Genova '70
Joan L. (Gnocchi) Gerardi '65
Diane F. Giorgi '73
Mary E. Goldsmith-Larkin '65
Lizbeth Gonzalez '70
Terrence M. Gorman '75
John J. Graham '66
Kevin F. Graham '73
Robert C. Graham '83
Carlota I. (Alvarez) Grate '71
Laura J. (Petricca) Graziosa '75
Vincent R. Greco '86
Yvonne A. (Paluzzi) Greenbaun '67
Colleen M. Grondona '73
Richard A. & Elizabeth (Duschaneck) Gruffi '69
Angela M. (Latteri) Guerrerio '70
Mary-Jean V. Gurzenda '71
John D. Hajko '64
William P. Hajko '69
Barbara J. (Cortelli) Halecki '74

Mary E. Halloran '75
Thomas J. Halloran '83
Robert J. & Susan (Cortazzo) Handler '78
Jane T. (Gargani) Hanley '66
Nancy (Lofaro) Heise '65
Frank G. Hettinger '63
Catherine M. Hickey '78
John J. Hickey '72
Peter M. Hickey '70
Anne J. (McGrory) Hofmann '69
Thomas D. Huvane '78
Pasquale J. Jaccoi '66
Charles H. ('73) & Jennifer (Lizzo '74) Johnson
Geraldine D. (Jelinek) Johnson '68
Charles A. Keane '70
John M. Kiernan '68
Cindy A. Kostrna '80
Diane (Miller) Kurtz '66
Thomas F. La Porta '82
Carlene L. Laing '89
Albert A. & Vita (Coviello) Lamperti '65
Edward W. LaPorta '77
Rose Marie A. Lavergata '65
William F. Lawrence '69
Rita A. Leone '68
Arthur J. Lichte '67
M. Kim Lindley-Soucy '83
Kevin E. Lofton '72
Lorraine C. Longo '63
Rosanne A. (Ilario) Luzarraga '80
Joseph C. Lynch '73
Paul A. Mackin '75
Paula A. (Williams) Madison '70
Anne-Marie G. Mallon '71
John W. Manning '66
Natalie M. (DeGennaro) Manning '66
William L. ('64) & Patricia (Hargrave '67) Mansfield
Eileen M. (Cartwright) Manzi '82
Anthony W. Marangiello '75
Joseph (Matamoros) March, Sr. '72
Richard J. Marcogliese '70
Kevin P. Marrinan '70
Bert Marro ('70) & Herb Rubenstein
Bruce F. Martino '73
Joanne M. Mastropolo '66
Catherine (Schaller) Mazzaro '82
Anthony T. McAllen '67
Harold M. McCabe '67
Theodore L. McCallion '71
Maria A. (Parran) McDonald '66
John F. McGovern '65
Gerard J. McGowan, Jr. '71
Thomas F. McGowan '68 & Malinda P. Teel
Peter G. McKeon '73
Marie (Scalera) McKeown '83
Marie M. (Olivares) McLaughlin '95
Michael P. McSherry '74
Sean G. Meenan '78
Joan D. Messina Shen '76
Susan M. (Sonnessa) Meyer '69
Kevin A. ('71) & Janet (Wezel '72) Michel
Joseph J. Mirra '69
A Member of the Class of '74
Angelo L. Moliterno '70
Eileen T. Moran '66
Roberto Morson '76
Michael B. Moschetta '86
John P. Nallen '75
Richard A. & Joan Di Martino Nardi '72

Nancy A. Neville '71
 New York Life Foundation
 John J. Nicotra '82
 James F. Nolan '67
 Anthony M. Nunez '88
 Brenda A. Nurse '71
 Daniel N. O'Brien '79
 Daniel S. & Gloria (Perri) O'Connell '72
 Frank D. O'Connor '78
 Eileen T. O'Driscoll '78
 Kathleen M. O'Toole '68
 Michael T. & Frances (Fabrizio) Oldi '66
 Cathy A. (Catanzaro) Ordiway '75
 Gabriella (Pichardo) Paulovich '87
 Janice (Tesoriero) Pauly '67
 Susan L. (Forestieri) Pellegrini '75
 The Pfizer Foundation
 Robert C. Philipps '82
 John M. & Linda (Licitra) Pica '67
 George Pifko, Jr. '65
 Pitney Bowes World Headquarter

Stephen T. Pluta '64
 Anne (McNamara) Pol '66
 John E. Potter '73
 Louisa J. Pricoli '77
 Rev. Francis J. Principe
 Karen A. Queally '70
 Michael J. ('63) & Barbara (Travers '65)
 Queenan
 Corrado D. Quintiliani '66
 Noreen Quirk '71
 Antoinette V. Racioppo '77
 Clare (Morgan) Rakshys '64
 Joan E. Ranallo '70
 Michael G. Reilly '67
 John B. Rice '65
 Robert ('74) & Carol Romeo
 Roseann M. Russo '77
 Mary S. (Bonaiuto) Salierno '65
 Jorge L. Sanchez '82
 Linda R. Scanzano '73
 Thomas Z. Scarangelo '75

Anton J. Schmitt '73
 Maria (Grabowski) Shapiro '67
 William A. Sharp '69
 Richard C. ('90) & Christina (Gallego '91) Shaw
 James D. Sheppard '66
 Brian D. & Veronica (Toumey) Sherry '70
 Elisa A. (DeMasi) Siciliano '66
 Gary A. Sozzi '65
 Vincent C. Spata '69
 John F. Spencer '66
 Eileen R. (Friel) Stivale '76
 Victoria A. (Trucchi) Sullivan '68
 Michael J. Sweeney '68
 Gerard P. ('77) & Mary (Rogan '78)
 Swikata
 Margaret M. (Brady) Tannian '84
 John C. Taylor '69
 Robert A. ('66) & Maria (Jerussi '67)
 Terranova

James J. Tobin '71
 Marie T. Tocci '66
 Edward R. Toth '66
 Marie (Delgado) Travis '67
 Jacqueline M. (Walsh) Tridente '68
 Stephen J. Tyrrell '69
 Joan L. (Conti) Vanchieri '66
 Verisk Analytics
 Verizon Foundation
 Vestar Capital Partners
 Edward J. Vincenzi, Sr. '67
 Geraldine M. Voelkel '67
 Lynne P. Volpe '69
 Gregory J. Waldron '65
 Bernadette M. (Giangrossi) Weidman '77
 Margaret L. (Jennings) Weinmiller '82
 Gerard A. Williams '73
 Rosemary (DiGiorgio) Williams '73
 Louis A. Zani '67

Cardinal Spellman's *Next Chapter Campaign* On Way to Reaching \$5 Million Goal **Make your pledge today!**

Your gift will provide for Emergency Tuition/Scholarship,
 Unrestricted Funds, and Faculty Development.



Donors will be recognized by giving category on The Next Chapter Capital Campaign Donor Wall to be stationed permanently outside of the cafeteria by the Bronze Doors entrance.

Gifts may be made in honor or in memory of special loved ones, relatives, friends or faculty members (past or present).

Gifts in the form of securities, property, life insurance, and bequests by will are also possible and can be discussed with Spellman's Advancement Office.

OVER 85% PLEDGED ALREADY!

\$5,000,000 Goal

- Faculty Development
- Emergency Tuition/Scholarship
- Unrestricted Reserve Fund

For more information, contact Jennifer Rivera, Vice President, Advancement at jrivera@cardinalspellman.org or 718-881-8000 x205
 Donations can be made online at www.cardinalspellman.org

Campaign Co-Chairs
 Paula Williams Madison '70
 Daniel and Gloria Perri O'Connell '72

Honorary Campaign Chair
 Mary Ann (Scarangelo) Tighe '66



Naming Opportunities are still available – No donation is too small to help us meet our goal!

CLASS GIVING REPORT 2014

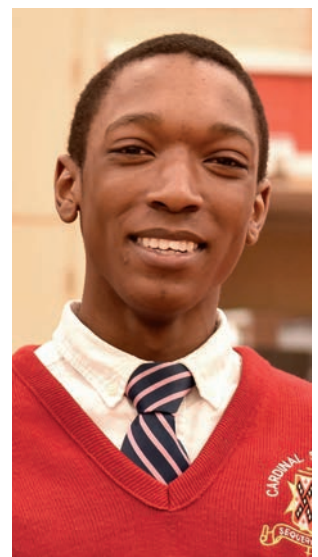
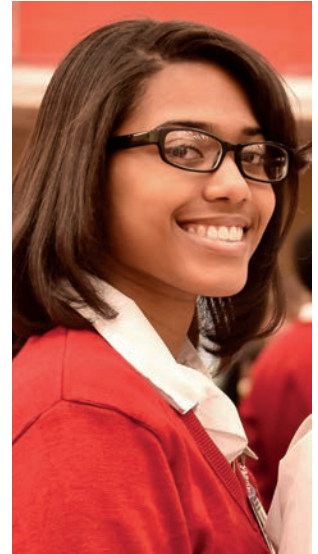
*Anniversary years in red

CLASS	AMOUNT	DONORS	OUT OF	PARTICIPATION %
1963 \$	9,409.28	16	74	22%
1964 \$	8,924.35	31	142	22%
1965 \$	29,440.00	58	298	19%
1966 \$	36,035.00	69	342	20%
1967 \$	18,426.60	52	344	15%
1968 \$	25,940.00	50	303	17%
1969 \$	22,243.40	61	295	21%
1970 \$	30,535.00	63	373	17%
1971 \$	50,611.50	53	331	16%
1972 \$	484,473.88	58	344	17%
1973 \$	20,545.00	59	447	13%
1974 \$	28,476.46	64	350	18%
1975 \$	50,110.00	56	336	17%
1976 \$	12,396.00	35	337	10%
1977 \$	7,465.00	24	385	6%
1978 \$	5,050.00	29	485	6%
1979 \$	11,629.00	37	426	9%
1980 \$	15,940.00	15	332	5%
1981 \$	8,939.00	24	318	8%
1982 \$	6,882.80	22	357	6%
1983 \$	4,421.00	20	467	4%
1984 \$	63,922.00	46	337	14%
1985 \$	7,147.70	23	424	5%
1986 \$	7,286.21	25	395	6%
1987 \$	5,520.00	16	349	5%
1988 \$	3,485.00	13	363	4%
1989 \$	10,675.24	14	341	4%
1990 \$	1,910.00	11	355	3%
1991 \$	4,465.00	10	351	3%
1992 \$	1,625.00	12	346	3%
1993 \$	1,100.00	7	320	2%
1994 \$	1,107.00	12	275	4%
1995 \$	951.00	12	331	4%
1996 \$	3,600.00	6	292	2%
1997 \$	1,450.00	3	285	1%
1998 \$	130.00	2	283	1%
1999 \$	235.00	4	331	1%
2000 \$	145.00	4	316	1%
2001 \$	925.00	5	278	2%
2002 \$	465.00	5	300	2%
2003 \$	134.00	3	271	1%
2004 \$	6,665.00	16	276	6%
2005 \$	900.00	2	225	1%
2007 \$	3,420.00	5	300	2%
2008 \$	120.00	2	355	1%
2009 \$	280.00	4	287	1%
2010 \$	220.00	3	329	1%
2012 \$	20.00	1	325	0%
2013 \$	30.00	3	336	1%
2014 \$	2,403.00			
TOTALS \$	1,018,229.42	1,165	16,062	7%

*Anniversary years in red

Note: For above reporting purposes, gifts from married classmates in different class years are each credited 50% of the gift to their respective class total.

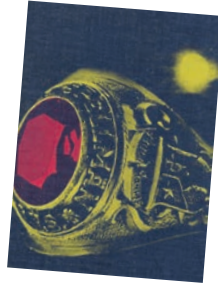
THANK YOU FOR SUPPORTING SPELLMAN!



■ ■ ■ ■ 2014 CHALLENGE GRANT RESULTS ■ ■ ■ ■

A generous donor pledged \$1,000,000 to Cardinal Spellman High School over the course of 10 years if we can increase the amount of donations from anniversary year classes. Last year, the classes of 1964, 1969, 1974, 1979, 1984, 1989, 1994, 1999, and 2004 were challenged and rose to the occasion. Below are the results of each class' increased giving.

Anniversary	Class of	2013 Donors	2014 Donors	% Increase	2013 Donations	2014 Donations*	% Increase
50th	1964	20	31	55%	\$ 5,801	\$ 8,924	54%
45th	1969	49	61	24%	\$18,300	\$ 22,243	22%
40th	1974	41	64	56%	\$28,885	\$ 28,476	-1%
35th	1979	31	37	19%	\$ 8,405	\$ 11,629	38%
30th	1984	20	46	130%	\$12,592	\$ 63,922	408%
25th	1989	9	14	56%	\$ 1,395	\$ 10,675	665%
20th	1994	7	12	71%	\$ 610	\$ 1,107	81%
15th	1999	2	4	100%	\$ 150	\$ 235	57%
10th	2004	3	16	433%	\$ 3,650	\$ 6,665	83%
Totals:		182	285	57%	\$79,788	\$153,877	93%



Classes of 1965, 1970, 1975, 1980, 1985, 1990, 1995, 2000, 2005, 2010

YOU HAVE BEEN CHALLENGED!

TO HELP US RAISE \$1 MILLION DOLLARS

Spellman was blessed with a challenge grant from a very generous donor who will give us **\$1 million** over the next ten years! But we need your help - in order to secure this generous gift we must increase the amount of gifts received from our Anniversary Year Classes.

You can make your gift to Spellman today by going to www.cardinalspellman.org and clicking the **"Donate Now!"** button. Thank you for helping your alma mater!



Postscripts

1970

Hon. Lizbeth Gonzalez, who is currently sitting in Bronx Supreme Court as an Acting Supreme Court Justice was named "Judge of the Year" by the Bronx County Bar Association. Congratulations Liz!

1973

Ed Moser spoke at Catholic University in Washington, D.C. to both the College Republicans and Democrats of the University, at its Barnes & Noble book store, during the week of the 150th anniversary of President Lincoln's slaying, on the history of scandals and assassinations in Washington, D.C.

1979

Jeannie Montano is the new chief for the United Way of the Dutchess-Orange Region, the charity announced in March, 2015. Steven Howell, United Way chairman, said



in a written announcement, "We are extremely pleased to have attracted someone of Jeannie's caliber to lead our United Way. We conducted an extensive search, and we've found someone with the professional experience and personal qualities we need in our next president"

1984

Hey Class of '84, Guess Who's Turning 50?! We are looking at the possibility of celebrating together and raising additional funds for the scholarship. Tentative time frame is Spring of 2016. More info to follow! Check the class of '84 Facebook page for updates <https://www.facebook.com/groups/cshsclassof1984>

1988

Alex A. Torres is pursuing a career in film-making. During his first short film "Heroes", he was given a chance to work with Gina Rodriguez, where he was the Executive Producer. Most recently, Alex directed his first short, called "Darker", a horror theme short film. It has been selected for four different festivals across the globe and its North American Premiere was this past August at The Hudson Valley

International Film Festival. Congratulations Alex!

2011

Mariah Bailey celebrated 3 graduation ceremonies this past May. First, the HEOP graduation (the program that helped her pay for NYU); because she had the highest GPA out of all Tisch HEOP students, she received an award and money. At her NYU commencement at Yankee Stadium, she received the Founders Day Award and Honors Diploma for maintaining a GPA in the highest 11% of the entire NYU senior class. At the Tisch graduation at Madison Square Garden, where Robert de Niro was the keynote speaker, she was nominated by the faculty to receive the Beth Turner Award for showing excellence of scholarship of the African Diaspora. Congratulations Mariah!

2012

Kanisha Ffriend is entering her senior year at Syracuse University. She recently finished her first children's book *I, Too, Am a Dancer!* - a teaching tool that highlights inclusive education, bullying, identity

and intersectionality. Featured in her first book, young dancer Anika encourages her classmates to explore Disability and Deaf Culture.

In *I, Too, Am a Dancer!* Anika challenges her hearing classmates to rethink what a hard-of-hearing person can do. As a young girl of color, Anika displays confidence in her disability and courage to display her talents at the school play auditions. Author Ffriend says, "We have been waiting a long time for this - a children's book that represents a child with multiple minority identities (a young girl who is Disabled and Black) as the confident, main character. We need this story in our schools and in our homes. To make the conversation following the book valuable, I have added a lesson plan and activity, because presenting the information isn't enough - we must work to educate with the information presented." You can find Ffriend's *I, Too, Am a Dancer!* at BlackGirlWrite.com.



IN MEMORIAM



Patricia Ann Ambrose '65
 Stephen A. Booth '71
 Coach Fred Calaicone
 Keith Charles '78
 Theresa (Englert) Choolfaian '74
 Daren M. Gajdusek '02
 Mark S. Gaston '69

Betty Ann (Sullivan) Habart '65
 Jennifer (Coleman) Hoban '85
 Vielka V. Holness '83
 Br. Thomas Moran
 (former Vice Principal of Spellman)
 Michael T. Mulligan '67

James A. Myers
 (formerly - Brother Cyril of Mary)
 Christian Negron '14
 Suzanne R. (Linquanti) Nelli '72
 Susan M. Sliva-Paige '78
 Thomas S. Postolowski '69
 Brian D. Sherry '70



Exciting
New Format!

2015 REUNIONS

Many faculty will
be in attendance!

CLASSES OF 1970, 1975, 1980, 1985

Saturday, October 17th

CLASSES OF 1995, 2000, 2005, 2010

Saturday, November 21st

6:00 p.m. Mass in Auditorium in memory of deceased members of the reunion classes.
 7:00 p.m. - 8:30 p.m. Cocktail Hour (and a half)
 Each class will have a separate and private area for the cocktail hour (and a half)
 8:30 p.m. - Midnight "Strolling Supper" and Dancing
 Tours will be given throughout the night.
 A group picture will be taken of each class in the gym.

If you need to update your contact information, please call or email the Alumni Office:
alumni@cardinalspellman.org or (718) 547-4732

PRAY 100

Help Support Spellman's Emmaus Program
Continuous Prayer in Student Chapel
on November 6th 2015



In 2014, President/Principal Daniel O'Keefe initiated a fund-raising opportunity called "Achieve 100". Mr. O'Keefe ran 400+ laps in 24 hours on the school track to raise money for the student sports and activities programs. He inspired students to give 100% in all they do and challenged alumni and friends of the school to donate \$100. It was a great success raising more than \$130,000 for the sports and activities programs.

In keeping with the "100" theme, we have designated this year's initiative as **Pray 100**, raising much needed funds for the Emmaus program.

Emmaus is a spiritual retreat attended by Spellman students which provides an opportunity for a community of participants to

deepen their relationship with God and to share their faith with others. Only the grace of God and the power of the Holy Spirit can touch hearts, and these gifts are granted through prayer.

On November 6th, we invite all alumni to return to Spellman to pray in the Chapel. You can sign up for a block of time—fifteen minutes, a half-hour, or even an hour, so that we can make sure that prayer is continuous throughout the day, 7 am to 7 pm.

We also invite supporters to donate to **Pray 100** which will benefit the Emmaus program. These funds will be used to purchase Bibles and crosses for students, provide meals for retreat participants, and update the "Emmaus Room" in the Spellman building.

We are grateful for your support and hope to see you on Friday, November 6th. For more information, contact the Alumni Office at 718-547-4732 or alumni@cardinalspellman.org



New York City Mayor de Blasio and Police Commissioner Bratton

Hold Press Conference at Spellman



Mayor Bill de Blasio and Police Commissioner Bill Bratton paid Cardinal Spellman a visit on July 15th to conduct a press conference. Before their conference began, the two were kind enough to meet and greet some current Spellman students. During the press conference, Mayor de Blasio highlighted the tremendous work of the 47th Precinct as well as the success of the "Summer All Out" program, which has put 300 more police officers into city neighborhoods. Spellman was selected as the press conference location because of its proximity within the 47th Precinct and because of strong community relations with the NYPD.

Giving Back



The Service Society Sponsors Cardinal Spellman's "Relay for Life" Week Events

The week of May 4th was "Relay for Life" Week at Cardinal Spellman High School. Our students involved with the Service Society planned and executed numerous activities to show support for everyone who has been impacted by cancer. The activities included a Relay for Life t-shirt dress down day where students donated \$10 for the opportunity not to wear their uniforms, the annual group walk around the Spellman Track, a zumba class in the gym, a bake sale, and a tree planting, honoring all of those in the Spellman community who have personally fought cancer. In total, Cardinal Spellman High School contributed over \$1,500 to the American Cancer Society for the purposes of contributing to cancer research.

Congratulations and special thanks to Ms. Jackie Cullen '95 and Mrs. Rita Piliero for their efforts and leadership with the service society.



Athletic Director and Cancer Survivor, Fred Oppen, planting the Relay for Life Tree.



Gaspare and Francesca Cerullo

Establishing Scholarship

Gaspare J. Cerullo, class of '72, and his wife, Francesca, are establishing a scholarship fund to benefit Spellman students by providing scholarship awards and tuition assistance to students with parents who are either going through cancer treatment or have completed their cancer treatment. Both Gaspare and Francesca are cancer survivors, Gaspare-brain tumor and Francesca-breast cancer. They are planning an event in June, 2016 (the 20th anniversary for Gaspare) to raise funds for this worthy cause. This is an initiative close to their hearts, as Mr. and Mrs. Cerullo were both diagnosed and treated while their two daughters attended high school. More information will follow in the spring edition of the Spellman newsletter.

To make a gift to this scholarship, visit www.cardinalspellman.org/cerulloscholarship.

Dorina DiLullo '86 Memorial Scholarship

Presented to Inaugural Recipient

This past June, members of the DiLullo family returned to Spellman to present the inaugural Dorina DiLullo '86 Memorial Scholarship to senior student, Christa Mattis '15. Dorina passed away suddenly on March 28, 2013 and to honor her memory and ensure that Dorina's legacy lives on, the DiLullo family, led by brother, Ben '81, established this memorial scholarship. Like Dorina, the scholarship recipient, Christa Mattis '15, was involved in many school activities including: the Cardinal's Players' Stage Crew, Vanguard and Student Government. Notably, Christa was the captain of Flag Corps. and President of the Community Art Club. As an honor student, Christa was inducted into the National Honor Society where she enjoyed tutoring her peers in the subjects of Algebra, Geometry, and Earth Science.



Block "S" Annual Awards Dinner Honors Student Athletes

Spellman Hall of Fame Inducts Three New Members

Cardinal Spellman High School recognized the contributions of over 350 student-athletes at the Block "S" awards dinner recently held at the school. Mr. Daniel O'Keefe, President/Principal, welcomed everyone in attendance and acknowledged the hard work and dedication of the coaches in developing the athletic talents of the students. The evening included the induction into the Spellman Hall of Fame of three individuals who have contributed to the success of the athletic program through the years: Carol (Martin) Colton '80 – Spellman's most decorated swimmer, Dan Eagel – legendary football coach, and Raymundus Hunt '81 – a two sport athlete in track & field



and football; known for his incendiary speed.

The night also featured the presentation of the Schiazza "S" which is given to students who have received seven or more varsity letters over their four-year high school career. This award was commemorated to honor the legacy of the late Mr. Salvatore Schiazza, who vigilantly served in various roles at Spellman during his tenure including Athletic Director and Moderator of the Alumni Association. Seniors Isaac Aguero '15, Adam Biolsi '15, Luana Bowers '15, Danae Dookhie '15, Aba Joseph '15, Alejandro Martinez '15, Rebecca Mota '15, and Christopher Wilson '15 were recipients of the 2015 Schiazza "S".



Class of 2015 with their Sports Awards

MOST VALUABLE ATHLETES 2015

- Baseball – Luis Dominguez and Tyrone Bowman
- Boys Basketball – Corey Grant and Jason Grant
- Girls Basketball – Jade Vega, Nijah Morgan, and Kameron Stone
- Bowling – Nicholas Sciubba
- Football – Elloheim Tucker and Kenny Johnson
- Girls Lacrosse – Victoria Ochiobi
- Boys Lacrosse – Chris Wilson and Isaac Aguero
- Boys Soccer – Tonin Tonaj
- Girls Soccer – Varinia Munoz
- Cheerleading – Kayla Martin
- Softball – Deanna Falciglia
- Boys Indoor Track – Mitchel Thomas
- Boys Outdoor Track – Aba Joseph
- Girls Indoor Track – Luana Bowers and Leah Anderson
- Girls Outdoor Track – Rebecca Mota and Leah Anderson
- Boys Cross Country – Mitchel Thomas
- Girls Cross Country – Leah Anderson

SCHOLAR ATHLETE OF THE YEAR

Adam Biolsi • Varinia Munoz

ATHLETE OF THE YEAR

Adam Biolsi • Luana Bowers • Paget Bramble • Jade Vega

Go
Pilots!

Congratulations
to all who
participated!

Spellman Graduate Taken in MLB Draft

Congratulations to Nick Padilla '14, on being drafted by the Tampa Bay Rays!



Nick Padilla '14

This summer, Nick Padilla '14 was selected by the Tampa Bay Rays in the Major League Baseball Draft. Nick was a standout player for Grayson County College (TX) and helped them tremendously in their 2015 campaign. Everyone at Cardinal Spellman is extremely proud of Nick and his accomplishments!

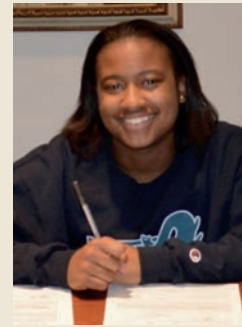
Basketball's Jade Vega and Kameron Stone

Heading to California State University Fullerton and Felician College

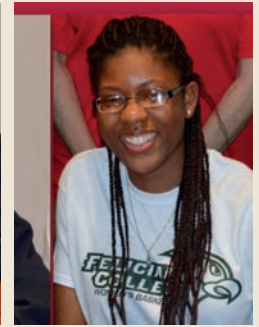
After a successful season that ended in the New York State semi-finals, Spellman's Girls Varsity Basketball Team accomplished another impressive victory. Seniors Jade Vega '15 and Kameron Stone '15 have signed letters of intent to continue their basketball careers at the collegiate level.

Jade, a crafty point-guard known for her quick decision making that allows her to get teammates involved in the offense was named the *Daily News* "Player of the Year" for the Bronx and also earned a spot on the All-City teams of both the *Daily News* and the *Bronx Times*. In the fall, she will be attending California State University Fullerton. Jade is looking forward to moving to the west coast and working hard to adjust to the speed of the game on a bigger stage.

While at Spellman, Kameron earned a reputation of being one of the most tenacious rebounders in the league. Her strong presence on the glass earned



Jade Vega '15



Kameron Stone '15

her a spot on the All Bronx 1st Team by the *Bronx Times* as well as the *Daily News* All-Bronx 2nd Team. She will be attending Felician College to study accounting. Kameron plans on taking her game up a notch by vigorously working on her ball handling skills this coming summer.

Everyone at Spellman is extremely proud of these two young women and all of their accomplishments, on and off the court!



Spellman Mourns Passing of Beloved Coach Fred Calaicone

Family suggests donations to Calaicone Scholarship in lieu of flowers

It is with a heavy heart that we announce the passing of Spellman's beloved Coach, Frederick W. "Fritz" Calaicone, 81 of Ardsley, on July 19, 2015. Coach Calaicone was instrumental in the lives of many students, coaching both football and baseball at Spellman from 1968 to 1980. While not a graduate of Cardinal Spellman High School himself, Coach Calaicone was a true Spellmanite! In the years that followed, he continued to be an active member of the Spellman community, returning often to watch games, attend the annual golf outing and Memorial Mass, and to visit with his Spellman family. In 2003, Coach Calaicone was inducted into the "Block S Hall of Fame" and in 2011 he was the "Sequere Deum" Honoree at the Alumni and Friends Golf Outing.

In lieu of flowers, the Calaicone family has requested that donations be made to the Fred Calaicone Scholarship Fund. As a tribute to his former coach, Frank Granito '77 established the Fred Calaicone Scholarship Fund in 2009, providing an annual \$1,000 scholarship to either a boy or girl athlete, in good academic standing with financial need. When the scholarship was established Frank stated, "I invite all Spellman alumni and friends to help increase this scholarship to make sure it continues in honor of Coach Calaicone's dedication to our alma mater." Fred valued education and the importance of this scholarship to students in need.

Born and raised in the Bronx, Coach Calaicone was an avid baseball player and played in the minor leagues for the NY Yankees and the Chicago Cubs. On July 24, 1965, Coach Calaicone married his beloved Francine Mirabella at Holy Cross Church in the Bronx. He was a firefighter for the FDNY from 1964 to 1984. He worked on Ladder 29 in the south Bronx and Ladder 52 in Riverdale. He later became the Fire Commissioner for the Greenburgh Fire Department. After coaching baseball and football at Cardinal Spellman High School for 13 years, Coach Calaicone became the head baseball coach at Pace University. He was very passionate about everything he set his mind to; he was a resilient, courageous and kind man who was loved by many and will be greatly missed.

If you have any questions regarding this scholarship, please contact Ms. Jennifer Rivera, Vice President of Advancement either by phone: 718-881-8000 x205 or by email: jrivera@cardinalspellman.org

To make your online gift to the Fred Calaicone Scholarship Fund, visit www.cardinalspellman.org/calaiconescholarship. If you prefer to mail a check, please make it payable to Cardinal Spellman High School and note Fred Calaicone Scholarship in the memo section. Mail check to: Cardinal Spellman High School, Alumni Office, One Cardinal Spellman Place, Bronx, NY 10466



Cardinal Spellman High School

One Cardinal Spellman Place
Bronx, New York 10466-5897
www.cardinalspellman.org

Non-Profit Org.
US Postage
PAID
White Plains, NY
Permit #1782

ADDRESS SERVICE REQUESTED

SPELLMAN NEWS

FALL 2015

Daniel O'Keefe, President/Principal
Jennifer Rivera '96, Vice President, Advancement
Delia Rivera, Director of Annual Giving

Design: Rosemary Campion
Blackbird Creative Services

A PUBLICATION FOR THE ALUMNI/AE, PARENTS AND FRIENDS OF CARDINAL SPELLMAN HIGH SCHOOL

Visit us on



UPCOMING ALUMNI EVENTS:

Saturday, September 19th	Homecoming & M. Scott '87 Celebration Run	CSHS Monsignor's Field
Saturday, October 3rd	25th Anniversary Reunion - Class of 1990	New Rochelle Radisson
Saturday, October 10th	9th Annual S.O.S.S. Brunch	NY Athletic Club
Sunday, October 11th	Columbus Day Parade	Morris Park, Bronx
Saturday, October 17th	Reunion - Classes of 1970, 1975, 1980, 1985	CSHS
Sunday, October 25th	Open House	CSHS
Friday, November 6th	Pray-100	CSHS
Sunday, November 8th	Alumni Memorial Mass & Brunch	CSHS
Thursday, November 11th	Veterans Day Memorial Service	CSHS
Saturday, November 14th	Girls Basketball Reunion	CSHS
Saturday, November 21st	Reunion - Classes of 1995, 2000, 2005, 2010	CSHS
Wednesday, November 25th	Thanksgiving Mass & Young Alumni Reception	CSHS

ANNIVERSARY CLASSES, PLEASE SEE PAGE 27 FOR REUNION SCHEDULES.



Giving back feels good.

Giving back makes a difference.

Please make your gift to Spellman today!



There are countless ways one can give back to Cardinal Spellman School. Whether you return to your alma mater and speak with classes, volunteer to work an event, contribute to the Annual Fund, support the Next Chapter Campaign, become a student sponsor or make a gift/pledge to one of our various

scholarship funds, your donation makes a difference in the lives of the 1,400+ students whose education and spiritual nurturing has been entrusted to us.

Please consider giving back to Spellman today!
www.cardinalspellman.org