



CTF SERIES Countertop Freezers

MODELS

- CTF-45
- CTF-125
- CTF-127
- CTF-137

Models available with top lighted graphic panels



FEATURES

CONSTRUCTION

- Painted steel exterior
- Aluminum interior
- Interior lighting
- Adjustable shelves in CTF-125, CTF-127 and CTF-137
- Fixed shelves in CTF-45

DOORS

- Aluminum frames
- Outer panes are made of safety glass
- Reversible doors on all models

WARRANTY

- Standard limited one year parts and 90 day labor

REFRIGERATION SYSTEM

- Temperature range: 0°F to 16°F (-9° to -18°C)
- Refrigerant: R-134a

TECHNICAL SPECIFICATIONS

MODEL	DIMENSIONS (in.)			DIMENSIONS (mm)			VOLTS	AMPS	UNIT H.P.	NO. OF SHELVES	STANDARD SHELF SIZE (in inches)	CAP. CU. FT.	SHIP CU. FT.	SHIP WT. (LB/KG)
	L	D	H	L	D	H								
CTF-45	22 ⁷ / ₁₆	19 ⁵ / ₈	19 ¹ / ₁₆	570	500	485	115	1.87	1/7	2	17 ⁵ / ₈ x 7	1.6	7.4	71/32
CTF-125	23 ¹ / ₂	20	26 ⁹ / ₁₆	595	510	675	115	4.7	1/4	3	18 ¹ / ₈ x 16 ¹ / ₂ , 18 ¹ / ₈ x 8 ³ / ₈	3.5	12.0	101/46
CTF-127	23 ¹ / ₂	20	33 ⁷ / ₈	595	510	855	115	4.7	1/4	3	18 ¹ / ₈ x 16 ¹ / ₂ , 18 ¹ / ₈ x 8 ³ / ₈	3.5	14.6	108/49
CTF-137	23 ¹ / ₄	20 ¹ / ₁₆	34 ¹ / ₁₆	590	510	865	115	4.7	1/2	3	18 ¹ / ₈ x 16 ¹ / ₂	4.2	14.6	106/48

LISTINGS



NSF applies to all models except CTF-137.

HOOKUP

Via plug in, 8 foot long flexible 3 wire 18/3 cord with molded plug.

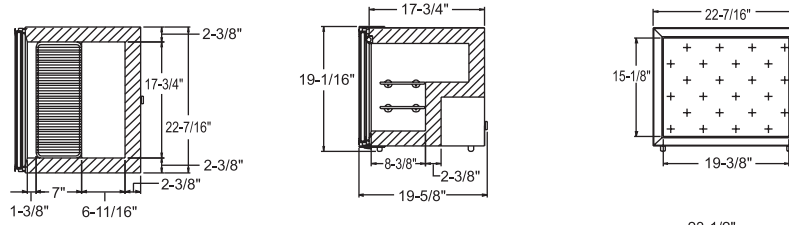




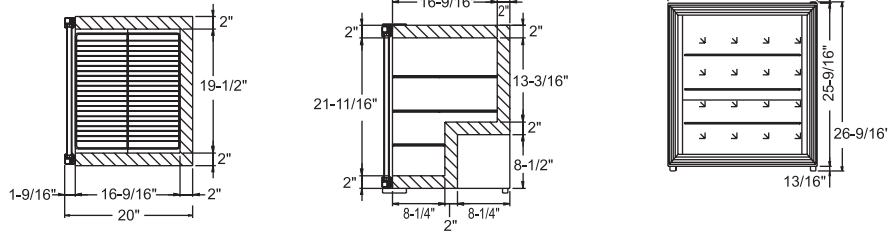
CTF SERIES COUNTERTOP FREEZERS

TECHNICAL DRAWINGS

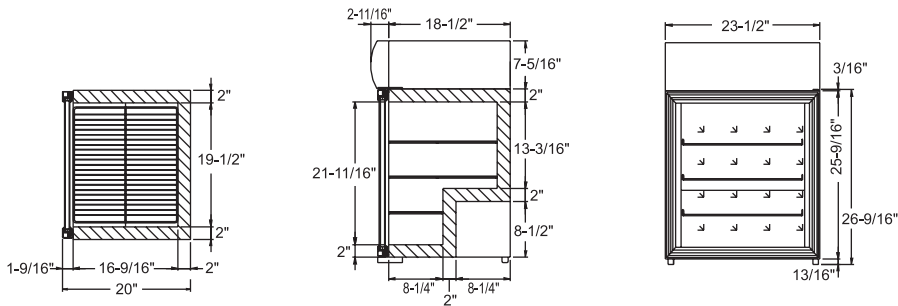
CTF-45



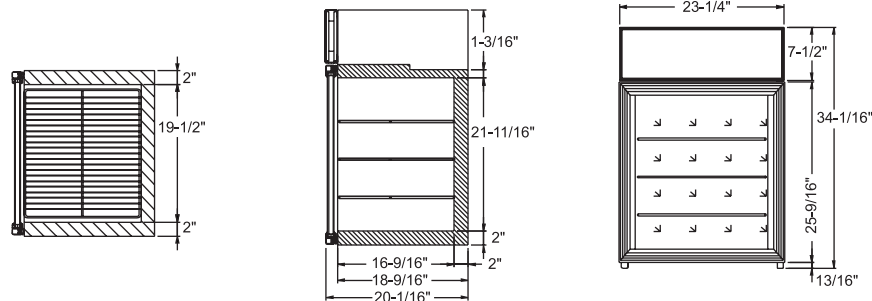
CTF-125



CTF-127



CTF-137



PLAN VIEW

SIDE VIEW

ELEVATION VIEW

BID SPECIFICATIONS

Item no. CTF-_____
Provide _____ () Countertop Freezers, Master-Bilt model CTF-_____.

Freezer to be constructed of painted steel exterior with aluminum inner liner. Each freezer will feature standard interior lighting. Models CTF-127 and CTF-137 will also be equipped with a top lighted graphic

panel for promotional purposes.

Models CTF-125, CTF-127 and CTF-137 will feature adjustable shelves while the CTF-45 model will contain fixed shelves.

Doors will be constructed with aluminum frames and outer panes will contain safety glass. Doors will also be reversible.

The refrigeration system will use R-134a

refrigerant and the temperature range will be 0°F to 16°F (-9° to -18°C).

Freezer to have standard limited one year parts and 90 day labor warranty.

All models to be UL and C-UL listed. All models, with the exception of CTF-137, to be NSF listed.

NOTE: Cabinet designed for optimum performance in air-conditioned area at 75°F ambient and 55% relative humidity. All specifications subject to change without notice.



908 Highway 15 North • New Albany, MS 38652

PHONE: 800-647-1284 or 662-534-9061 • FAX: 800-232-3966 or 662-534-6049 • www.master-bilt.com

