

MESSENGER



Our Saviour's Lutheran Church Newsletter

FEBRUARY 2015

A message from Pastor Meeker

The month of February is filled with lots of things to remember, enjoy, and do more like most months.

For example, Valentines Day. St Valentine was a priest who was executed around 270 A.D. Historically, the reasons vary. In 498 A.D. Pope Gelasius declared February 14 as St. Valentine's Day. Father Valentine's love for God and humanity was exemplary.

Another example is the beginning of Lent with Ash Wednesday on the 18th. We spend forty days, excluding Sundays, to examine our faith and living. We also prepare for Easter Sunday a great day for Christians. Like most churches we will worship every Wednesday. Lent is a time to experience spiritual growth. Growth like sincere repentance, a changing heart, casting off old sinful practices and trusting in Christ to lead us in the ways he wants us to live. Lent is a time to allow the Holy Spirit to do "spring cleaning" within us. It is our opportunity to have God help us to rid of the "stuff" that hinders our relationship with God and people. Lent is our opportunity to allow Christ to awaken us to be new creations. In the words of 2 Corinthians 3:3, you show that you are a letter of Christ...written not with ink but with the Spirit of the living God, not on tablets of stone but on tablets of human hearts."

The last example is Presidents' Day, February 21. Did you know that Abraham Lincoln struggled with depression, including suicidal thoughts for varied reasons? He coped in many ways including: Humor, where and when he sought out humorous stories for himself and to share with others. Lincoln knew that "A cheerful heart is good medicine, but a downcast spirit dries up the bones" (Proverbs 17:22). Obviously Lincoln's faith in God also helped. He attended New York Avenue Presbyterian Church in Washington. When his son died a friend told him that many Christians were praying for him. Lincoln replied "I am glad to hear that. I need their prayers. I will try to go to God with my sorrow."

Enjoy your February faith and life experiences.
Blessings on our faith and living, *Pastor Paul Meeker*

We thank God for everyone who helps in the mission and ministry of this congregation through their faith witness of words and actions. Thank you for your faithfulness!!!

BIBLE STUDIES

Sunday mornings at 9:15 A.M. the Lusks and others will facilitate *The Great Courses New Testament Bible Study* DVD series in the Fireside Room.

Monday mornings, 10 A.M. in the Fireside Room, *The Book of Luke*.

The first Thursday of every month, 10:30 A.M., in the Fireside Room, various Bible passages centered on the theme *Transforming Life and Faith*.

In February we will look at The Books of Job and Romans focusing on the theme *Suffering and Endurance*.

Other small group Bible studies take place in various locales and at different times. Watch and listen for related announcements.

All are invited to our Bible study opportunities.



Sycamore Tree Preschool

The Annual Report for the National Association for the Education of Young Children (NAEYC) was submitted on January 12, 2015.

Registration for summer and fall classes has begun. Classes are filling up. If you know someone who has young children and might be interested, please let them know. Word of mouth has been our best form of advertisement. Information is available at the preschool, 360-792-2213 and brochures are always available in the church office.

Friday, February 13, The Sycamore Tree Preschool will be having a **CPR/Basic First Aid/AED Training** at OSLC. Space is limited so please call Anna at the church if you are interested in participating.

No School - February 16 in honor of President's Day.

The preschool staff will be attending "*Planting the Seeds of the Future*" an early childhood conference that will be held on Saturday, February 28 at the SEEFilm Bremerton Theatre. As active members of the Kitsap Association for the Education of Young Children, our staff helps with organizing the overall conference, including recruiting presenters, helping with the brochure, assisting with registration and assembling conference packets. Participating at early childhood conferences allows our preschool staff to continue our early childhood education, improve our professional growth, enhance the quality of our program and allows us the opportunity to give back to our Early Childhood Community.

Our next preschool board meeting will be on February 23 at 6:30 at the preschool. Meetings are open to everyone...Come join us!

Tick! Tock! Tick! Tock! Tick! Tock! It is almost *time*...Our 26th Annual Silent Auction. The Silent Auction starts March 9! A variety of unique and interesting items are coming in! We are still accepting items if you are interested in contributing to this year's auction. Please feel free to call or leave your donation in the church office.

Treasure the love you receive above all. It will survive long after your good health has vanished.
-Og Mandino

Andrea Campbell, Program Director

Barb Crisman, Financial Secretary



SYCAMORE TREE PRESCHOOL'S
26th Annual Silent Auction
March 9 – 22
OUR SAVIOUR'S LUTHERAN CHURCH

Our annual silent auction is a volunteer effort of parents, staff, church members and alumni. It is a terrific way to support the Sycamore Tree Preschool.

We are seeking new merchandise, services, gift certificates or cash donations. It is time to get creative and use your imagination. (A few suggestions are listed on the back of this form). **Please turn items in by March 1.**

Donor Name: _____ Phone (____) _____

Donor Address _____

(City) _____ (State) _____ (Zip) _____

Brief Item Description _____ Value \$ _____

Detailed Item Description (please state any limitation, special conditions, expiration date, etc.)

Item: accompanies this form will be delivered by ____/____/____

Gift Certificates: enclosed auction committee to create certificate

Cash Donation: amount \$ _____
 check enclosed payable to Sycamore Tree Preschool

Please return this completed form to the church office, preschool or place in the offering. For more information please contact the preschool – 360-792-2213. All proceeds from the auction go for the support of the preschool.

Thank you for your support

Some Suggestions for the Sycamore Tree Preschool Annual Silent Auction:

(All items should be new and unused)

Antiques and Collectibles

Jewelry, Silver, China, Crystal, Fine Works of Art, Sculptures

Auto Accessories and Services

CD player, Car Alarm, Tires, Certificates for Lube and Oil, Car Washes, or Detailing

Sport Fans

Tickets to Sporting Events- Golf, Football, Baseball, Basketball, Hockey; Sonics, Mariners, Thunderbirds, Huskies, Cougars, Etc.; Sports Equipment, Clothing, Health and Fitness Clubs

Child Care

Weekend Baby-sitting, Parents Night Out, Trip to the Zoo

Computer Items

Computer Lessons, Software, Hardware

Enjoy Yourself

Ski Trips or Passes, Tickets or Passes to Concerts, Symphony, Opera, Ballet or Movie Passes, Afternoon or Evening Cruises, Boating or Sailing Trips, Train Excursions, Round of Golf, Restaurant Certificates, Grocery Gift Certificates, Gourmet Food Baskets, Dessert-a-month for one year, Baked Goods

Flower and Garden

Landscape Shrubs and Plants, Dried Floral Arrangements, Landscaping Services, Lawn Mowing Services

House Beautiful

Painting, Window Washing, Housecleaning, Carpentry, 3 hours of Handyman Service

Professional Services

Legal, Medical, Limousine, Catering, Housecleaning, Computer, Beauty Services, Massage, Art Lessons, Musical Entertainment, Tax Preparation, Pet Grooming

Small Appliances

Bread Makers, Microwave Ovens, Toasters, Vacuum Cleaners, Espresso Machines, etc.

Time for Fun!

Land, Sea or Air Packages; Airline Tickets/Frequent Flyer Miles, Tours, Hotel Coupons; Use of Condos or Time Share, Cabins, RVs; Fishing or Rafting Trips, Bed and Breakfast, Resort or Hotel Packages, Weekend Getaways, Car Rentals

If you have an auction donation, please complete the donor form on the other side of this page and either mail it to us or attach it to your donation when you deliver it to the church office or preschool. Your support is greatly appreciated.

Maternity Leave

News from Anna, your Office Manager!

For those of you who haven't been in the office this may be news to you, but I am pregnant and the due date is coming up fast (February 24). The plan, right now, is to

take 6 weeks off from normal office hours following the birth for maternity leave.

What will things look like? Well, when you call in, you may not get a live voice (unless Pastor is in the office). Please leave a message on the voice machine OR email the church office at oslc.bremerton@gmail.com. Your message will be received and responded to. Bulletins and Newsletters will be completed while I am working at home.

*One special request! If you have an announcement for the Messenger or the Sunday bulletin during this time, please email it to the email address mentioned above to ensure that it gets to Anna.

Thank you for your love and support as I take some much needed time off to focus on my growing family

In Christ,

Anna Bonaro

Thanksgiving Baskets!

Wow, what an amazing turnout we had in donations for our Thanksgiving baskets. We were able to provide Thanksgiving meals for 7 families and still able to donate 179 pounds of food to Bremerton Foodline.

Thank you, your generosity fed so many!

Giving to OSLC

-If you are **not receiving your offering envelopes** in the mail, please let the church office know!

-**Simply Givers**, if you are changing your giving amount for 2015, please fill out a new form. Please talk to Beth if you have questions.



Our OSLC Quilters!

Please join us on the second, fourth and fifth Thursdays of the month from 9:00 a.m. -2:00 p.m. Any experience level is

MARK YOUR CALENDARS AND SET YOUR CLOCKS
Sunday, March 8 Daylight Savings Time begins so...



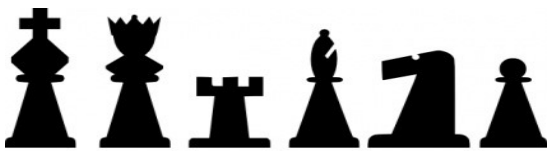
FEBRUARY GAME NIGHT at OSLC

all ages welcome
will be held, Friday, February 6,
at 6pm in the Fellowship Hall

Theme: Valentine's Day

Please bring a red food item or tomato based Potluck dish to share, a friend or two to join the fun, and a game you would like to play!

For more information
Please call Pat at 360-516-0755



"Introduction to Faith 5 Family Devotions

will be held Friday, February 6
at 5:15pm in the Fellowship Hall

Church Council currently has the following positions open:

One -1-year position and One -2- year position
If you are interested in serving in one of these positions, please leave your name in Bob Bishop's Council box or in the Church Office.



We are collecting sample sized toiletries: shampoo, conditioner, soap, lotion, Kleenex, toothpaste, combs... through August for homeless and low income community members. A donation box is located in the narthex, thank you!



Dear Friends,
Thank you for your prayers, love and kindness before and after Henrik's passing. He is greatly missed, however, we are so happy for the memories he left with us. He truly enjoyed your friendship. God's peace to you.

Lovingly,
Alma Bockelie and family.



We again will be collecting personal care items for the spring Lutheran World Relief shipment, to be packed near the end of April. For your shopping "expeditions" consider the following items:
- light or medium weight bath-size towel (approximately 52" X 27"), darker colors preferred (because power driers are not available, look for lighter weight towels, perhaps to be found in lower-priced national chain stores.)

- 2 bath-size (4 or 5-oz) bar soap in original wrapper,
- 1 nail clippers with or without /file, removed from pkg,
- 1 wide-tooth, sturdy comb, removed from package,
- 1 adult-size toothbrush in pkg., (Multiple packs of toothbrushes are fine –we will repackage them into sealed envelopes)

We also need more people to help make quilts! We work on quilts the second and fourth Thursdays of the month. Extra help is needed in tying knots and running a sewing machine to finish as many as possible

Please see article "Some Background to Stimulate Your Awareness and Generosity"

SOME BACKGROUND TO STIMULATE YOUR AWARENESS AND GENEROSITY

Why are health kits important? Who needs a bar of soap, a towel and nail clippers?

Let me tell you a little about living in a village in a developing country—a village in rural Malawi, Africa.

Imagine a family with 4 or 5 children living on an income of less than \$900 per year. The annual average inflation is about 29%, so last year's one dollar loaf of bread would now cost \$1.30. Most goods are imported from China with few regulations regarding quality. So even if a family could afford to buy clippers, they wouldn't work well or last long. It may take an hour to travel 10 miles, walking part of the way and paying \$1 per person to ride in a dilapidated vehicle.

Most people in town have access to running water and a toilet. In the village where 85% of the population lives, one would have access to a well within $\frac{3}{4}$ of a mile. Water for living has to be carried from the pump. Washing is done by hand. Families have to raise some of their own food to be able to eat. The largest city in Northern Malawi, Muzuzu, has only one dentist for over 125,000 people, and not all can afford the \$35 fee.

Just writing this has pushed me to get out the check book and make a contribution. Life is so challenging and difficult—small things mean so much! Won't you join others in contributing to this effort to share basic necessities with our brothers and sisters so far away?

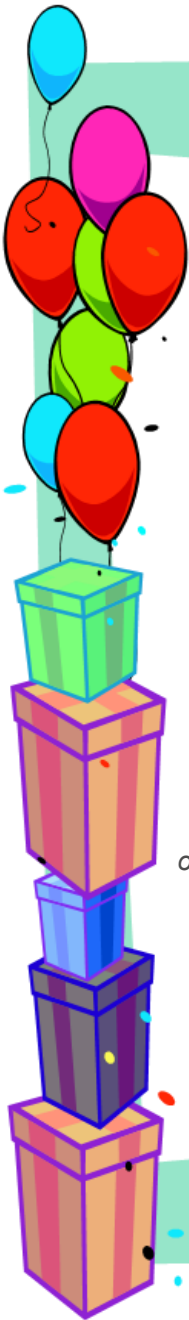
-Submitted by Judith Richarzhen



Children in Class



kitchen supplies...all cooking would be done outside on fire.



CARING MINISTRY

BIRTHDAYS:

Mary Nasvik	2/3
Carolyn Dexter	2/7
Christine Danielsen	2/11
Dennis Busch	2/21
Jess Hammond	2/28

WEDDING ANNIVERSARY:

Patty and Doug Lent	2/20/2000
---------------------	-----------

If you are celebrating a birthday, baptism, or wedding anniversary and don't see it published, please let the church office know, so we can celebrate with you!



VOLUNTEER!

SIGN UP SHEETS AVAILABLE FOR:

FELLOWSHIP TIME COFFEE HOSTS

LAYREADERS

SENIOR LUNCH

ALTAR FLOWERS

OUR SAVIOUR'S LUTHERAN CHURCH

THE WELCOMING PLACE FOR ALL IN CHRIST

MISSION STATEMENT

Our Saviour's Lutheran Church, established in 1893, is a family of believers brought together by the love and grace of God.

Motivated by Christ's command to spread the Gospel and empowered by the Holy Spirit, we seek to serve through worship, education and outreach.

IN OUR PRAYERS

Every Sunday on the back page of the bulletin, names are listed for those with Health Concerns, Deployed Military, our Missionary and our Adopt-A-Cop Bremerton Police Officer. The following is a list of members who are unable to be with us at worship on Sunday because of age or health restrictions and those with long-term health concerns. We encourage you to save this page of the *Messenger* and include these people in your daily prayers.

Paul Baumgaertner
 Peter Baumgaertner
 Joan Bird
 Lisa Bolinger
 Barbara Buckley
 Carol Collins
 Rich Coogan
 Molly Fisher
 Cara Gardner
 Sharon Gray
 Dorothy Larson
 James Mason Jr.
 Elizabeth Menough
 Suwan Menough
 Eleanor Moore
 Austin Sherman
 Al Smith
 Tami Wall
 Denise Yager

We apologize if we have left anyone off this list. Please contact the church office, 479-6374 and share with us the name to be included.



Lent at OSLC ...it's coming!

Ash Wednesday, February 18, worship at 7:00 p.m.

Wednesday Lenten Services, February 25; March 4, 11, 18, 25, worship at 7:00 p.m.

Holy Week

Maundy Thursday, April 2, worship at 7:00 p.m.

Good Friday, April 3, worship at 7:00 p.m.

Easter Vigil, April 4, worship at 7:00 p.m.

Easter Sunday, April 5,

Worship at 8:00 a.m. and 10:30 a.m.

Breakfast at 9:15 a.m.



Would you like to receive the monthly Messenger via email?

Email your request to the church office at

oslc.bremerton@gmail.com and we will get you on the list!



Our Saviour's Lutheran Church

1015 Veneta

Bremerton, WA 98337

RETURN SERVICE REQUESTED

STANDARD MAIL
NON-PROFIT ORG.
US POSTAGE PAID
BREMERTON, WA
98337
PERMIT NO. 11

February 2015

Pastor: Paul Meeker

Office Admin.: Anna Bonaro

Contemporary Worship Dir.: Alaina Queen

Organist/Choir Director: Cynthia Rennie

Treasurer: Sharon Smith

Custodian: Art Claflin

Church Office: #360-479-6374

Email: oslc.bremerton@gmail.com

Website: www.oslcbremerton.org

Sycamore Tree Preschool:

Director: Andrea Campbell

#360-792-2213

CHURCH OFFICE HOURS

Monday—Thursday

8:00 a.m.—1:00 p.m.

Office is closed on Fridays

February 2015

SUNDAY	MONDAY	TUESDAY	WEDNESDAY	THURSDAY	FRIDAY	SATURDAY
Feb 1 8:00am Worship 9:15am Contemp Worship 9:15am Education (all ages) 10:30am Worship 11:30am Worship Mtg 11:45am Confirmation	2 10:00am Bible Study ((FR)) 12:00pm Al-Anon (FR) 5:30pm NA Group	3 4:00pm Private Group ((FR)) 6:30pm NA Group	4 10:00am Prayer Group ((L)) 12:00pm Staff ((L)) 3:00pm Girl scouts (SSC) 4:00pm Private Group ((FR)) 5:00pm Adult Choir 6:00pm Cont. Mtg (L) 6:30pm Band Practice (S)	5 10:30am First Thursday Bible Study ((FR)) 4:00pm Private Group ((FR)) 6:45pm Bell Choir	6 5:15pm Faith Five 6:00pm Game Night ((FH))	7
8 8:00am Worship 9:15am Contemp Worship 9:15am Education (all ages) 10:30am Worship 11:45am Confirmation 1:30pm Lutherhaven Annual Meeting (FH, K)	9 10:00am Bible Study ((FR)) 12:00pm Al-Anon (FR) 6:00pm Coffee Oasis	10 11:30am SON Women (FH) 4:00pm Private Group ((FR)) 4:00pm SON Board 5:45pm Committee Meeting 6:30pm NA Group 6:45pm Council	11 10:00am Prayer Group ((L)) 12:00pm Staff ((L)) 4:00pm Private Group ((FR)) 5:00pm Adult Choir 6:30pm Band Practice (S)	12 9:30am Quilting ((FH)) 4:00pm Private Group ((FR)) 5:00pm Sons of Norway (FH) 6:45pm Bell Choir	13 CPR Training	14 Valentine's Day (United States) 9:00am Lutherhaven Work Party 3:00pm Private Group (FH, K) 
15 8:00am Worship 9:15am Contemp Worship 9:15am Education (all ages) 10:30am Worship 11:45am Confirmation	16 Presidents' Day- Church Office Closed 10:00am Bible Study ((FR)) 12:00pm Al-Anon (FR) 	17 1:00pm Shalom Circle (at The Willows) 4:00pm Private Group ((FR)) 6:30pm NA Group	18 Ash Wednesday 10:00am Prayer Group ((L)) 12:00pm Staff ((L)) 3:00pm Girlscouts (FH & L) 4:00pm Private Group ((FR)) 5:00pm Adult Choir 6:30pm Band Practice (S) 7:00pm Worship	19 9:00am SoN Fellowship 10:30am Esther Circle ((L)) 4:00pm Private Group ((FR)) 6:45pm Bell Choir	20 12:00pm Senior Lunch Bunch ((OS))	21 6:00pm Private Group ((FH))
22 8:00am Worship 9:15am Contemp Worship 9:15am Education (all ages) 10:30am Worship 11:45am Confirmation	23 10:00am Bible Study ((FR)) 12:00pm Al-Anon (FR) 6:30pm Sycamore Tree Board Meeting ((P))	24 4:00pm Private Group ((FR)) 6:30pm NA Group	25 10:00am Prayer Group ((L)) 12:00pm Staff ((L)) 4:00pm Private Group ((FR)) 5:00pm Adult Choir 6:30pm Band Practice (S) 7:00pm Worship	26 9:30am Quilting ((FH)) 4:00pm Private Group ((FR)) 6:45pm Bell Choir	27	28

Room Key:
 FR- Fireside Room
 P- Sycamore Tree Preschool

FH- Fellowship Hall
 CC- Children's Chapel
 SSC- Sunday School Classrooms

S- Sanctuary
 L- Library
 OS- Off Site