

BRICKWALL GAZETTE

Editor: Nancy Matthews

Genealogy Society Of Craighead County, Arkansas

This month's meeting will be at the
Jonesboro Craighead Public Library

February 19, 2012

VOLUME NUMBER SIXTEEN, ISSUE NUMBER TWO

FEBRUARY 2012

MEETING HAPPENINGS: Year-end Reports were given by the out-going officers.

The proposed By-Law Change was voted on by the membership -

ARTICLE V - OFFICERS - Paragraph 3

Old: The term of office is one year.

New: The term of office is two years.

The proposed change was passed. The next election will be in January 2014.

The following officers and board members were elected for 2012-2013.

President: Betty Woodall

Vice-President: Open

Recording Secretary: Lynn Dowdy

Corresponding Secretary and Publicity:

William Dunavin

Treasurer: Dorothy McCarns

Historian: Patsy Penney

Publications: Nancy Matthews

Board Member: Bill Settles

Board Member: Jan Beasley

Board Member: Susie Grommet

~~~~~  
**EXECUTIVE BOARD MEETING:**

The Executive Board Meeting for January was held on February 11, 2012.

1. Membership Report

2. Grant Money available for Civil War Topics
3. Beginners Class
4. The next Executive Board meeting will be March 10, 2012

~~~~~  
FEBRUARY MEETING: The February Meeting will be held on February 19, 2012. Our speaker will be Nancy Matthews and the Topic will be the 1940 Census.

~~~~~  
**RENEW – RENEW – RENEW:** -- IF you have not yet renewed your dues, this is your last newsletter. We hope that you are still with us.

Individual member dues are \$15 a year. Dues for a couple are \$20 and Corporate Dues are \$35. You can mail new memberships or renewals to GSCCA, P.O. Box 844, Jonesboro, Arkansas 72403. Please use form included in the newsletter.

~~~~~  
GRANTS available for projects: It has come to our attention that The Arkansas Civil War Sesquicentennial Commission announced it will award grants for projects in the state commemorating the 150th anniversary of the civil war. If you are willing to help investigate the necessary steps required, please contact Jan Beasley jan.beasley@gmail.com.

~~~~~  
**BEGINNER'S CLASS:** The next Beginning Genealogy Class is scheduled for April 2 & 3 at the Jonesboro Library from 6:00 to 8:00. Please contact Nancy Matthews – 870-219-0535 [nlmatthews@suddenlink.net](mailto:nlmatthews@suddenlink.net). We had 6 attendees for our February Class.

~~~~~  
UPCOMING EVENTS

February 2012 --

February 11 - Executive Board Meeting - 2:00 p.m. - Civic League Room - Jonesboro Lib.
February 19 - Society General Meeting - 2:00 p.m. - Round Room - Jonesboro Library
Speaker: Nancy Matthews
Topic: 1940 Census

March 2012 --

March 10 - Executive Board Meeting - 2:00 p.m. - Civic League Room - Jonesboro Library
March 18 - Society General Meeting - 2:00 p.m. - Round Room - Jonesboro Library
March 24 - Central Arkansas Genealogical & Historical Society Spring Workshop
Place: Darragh Center, Central Arkansas Library, 100 Rock St, Little Rock, Arkansas
Speaker: Patricia Walls Stamm

April 2012 --

April 7 - Executive Board Meeting - 2:00 p.m. - Civic League Room - Jonesboro Library
April 15 - Society General Meeting - 2:00 p.m. - Round Room - Jonesboro Library

May 2012 --

May 1-31 - Arkansas Heritage Month
May 12 - Executive Board Meeting - 2:00 p.m. - Civic League Room - Jonesboro Library
May 20 - Society General Meeting - 2:00 p.m. - Round Room - Jonesboro Library

Do you know about any Upcoming Events that would be of interest to fellow genealogists? If you have an event you would like posted, please contact me, Nancy Matthews nlmatthews@suddenlink.net and I will add it to the list.

~~~~~  
**UPCOMING PROGRAMS**

We need your help. What are some topics that you would like to see in Upcoming Programs? Our goal is to present topics and speakers that are timely to our members. Please let us know your ideas - [gscca@suddenlink.net](mailto:gscca@suddenlink.net).

~~~~~  
2012 CALENDARS: Thank you to everyone that contributed pictures Craighead County Families for our 2012 Calendar.

2012



Calendars will be available at the meeting on Sunday, February 19, 2012. They are \$5 each.

~~~~~  
**Central Arkansas Genealogical & Historical Society  
SPRING WORKSHOP**

MARCH 24, 2012

GUEST LECTURER - Patricia Walls Stamm

Topics: Death Has Many Faces  
Developing A Genealogical Research Plan  
They Served Our Country  
Newspaper Research-More Than Obituaries

Mail Check to CAGHS, P.O. Box 1441, North Little Rock, AR 72115  
Members \$15.00 -- Non-Members \$25.00 - [www.caghs.net](http://www.caghs.net)

~~~~~  
WELCOME to new members:

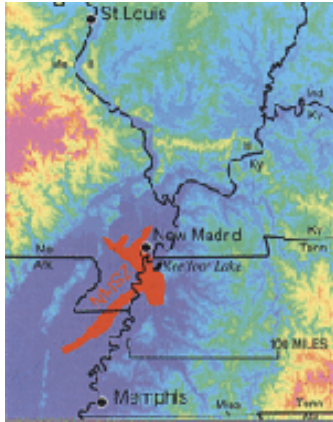
Elaine McClain - SNOW, BOTTOM, CUNNINGHAM, ELLIOTT, WALLER, MOORE,
WHEELER, McCLAIN, AGEE, BEAVER, ADAMSON, MARTIN, JENKINS -
laneyj88@hotmail.com

Peggy Shaw - PAYTON, SHAW - gacca@suddenlink.net

~~~~~  
**NEWSLETTER ARTICLES:** Do you have an interesting article that you would like to see in the newsletter? Maybe you have a success story that you would like share. Send Newsletter Articles to Nancy Matthews [nlmatthews@suddenlink.net](mailto:nlmatthews@suddenlink.net). Deadline is the Sunday before the meeting.

~~~~~  
FACEBOOK: Join us on Facebook. Go to www.facebook.com, type GSCCA into the search box. Be sure to click LIKE. We would like to include you among our friends.

BICENTENIAL OF THE NEW MADRID EARTHQUAKE



From: The City of New Madrid Website

The New Madrid earthquakes were the biggest earthquakes in American history. They occurred in the central Mississippi Valley, but were felt as far away as New York City, Boston, Montreal, and Washington D. C. President James Madison and his wife Dolly felt them in the White House. Church bells rang in Boston. From December 16, 1811 through March of 1812 there were over 2,000 earthquakes in the central Midwest, and between 6,000-10,000 earthquakes in the Bootheel of Missouri where New Madrid is located near the junction of the Ohio and Mississippi Rivers.

In the known history of the world, no other earthquakes have lasted so long or produced so much evidence of damage as the New Madrid earthquakes.

Three of the earthquakes are on the list of America's top earthquakes: the first one on December 16, 1811, a magnitude of 8.1 on the Richter scale; the second on January 23, 1812, at 7.8; and the third on February 7, 1812, at as much as 8.8 magnitude.

The Mississippi Ran Backwards -- After the February 7th earthquake, boatmen reported that the Mississippi actually ran backwards for several hours. The force of the land upheaval 15 miles south of New Madrid created Reelfoot Lake, drowned the inhabitants of an Indian village; turned the river against itself to flow backwards; devastated thousands of acres of virgin forest; and created two temporary waterfalls in the Mississippi. Boatmen on flatboats actually survived this experience and lived to tell the tale.

Getting Over Cracks -- As the general area experienced more than 2,000 earthquakes in five months, people discovered that most of crevices opening up during an earthquake ran from north to south, and when the earth began moving, they would chop down trees in an east- west direction and hold on using the tree as a bridge. There were "missing people" who were most likely swallowed up by the earth. Some earthquake fissures were as long as five miles.

Earthquake Phenomena --

Sand Boils -- The world's largest sand boil was created by the New Madrid earthquake. It is 1.4 miles long and 136 acres in extent, located in the Bootheel of Missouri, about 8 miles west of Hayti, Missouri. Locals call it "The Beach." Other, much smaller, sand boils are found throughout the area.

Seismic Tar Balls -- Small pellets up to golf ball sized tar balls are found in sand boils and fissures. They are petroleum that has been solidified, or "petroliferous nodules."

Earthquake Lights -- Lights flashed from the ground, caused by quartz crystals being squeezed. The phenomena is called "seismoluminescence."

Warm Water -- Water thrown up by an earthquake was lukewarm. It is speculated that the shaking caused the water to heat up and/or quartz light heated the water.

Earthquake Smog -- The skies turned dark during the earthquakes, so dark that lighted lamps didn't help. The air smelled bad, and it was hard to breathe. It is speculated that it was smog containing dust particles caused by the eruption of warm water into cold air.

Loud Thunder -- Sounds of distant thunder and loud explosions accompanied the earthquakes.

Animal Warnings -- People reported strange behavior by animals before the earthquakes. They were nervous and excited. Domestic animals became wild, and wild animals became tame. Snakes came out of the ground from hibernation. Flocks of ducks and geese landed near people.

~~~~~

~~~~~  
Additional Information on the New Madrid Earthquake

Encyclopedia of Arkansas

<http://encyclopediaofarkansas.net/encyclopedia/entry-detail.aspx?entryID=2218>

United States Geological Survey - USGS

http://earthquake.usgs.gov/earthquakes/states/events/1811_overview.php

Wikipedia - The Free Encyclopedia

http://en.wikipedia.org/wiki/1812_New_Madrid_earthquake

Missouri Department of Natural Resources

<http://www.dnr.mo.gov/geology/geosrv/geores/techbulletin1.htm>

~~~~~  
**Kinsman**

Alas, my elusive kinsmen  
You've led me quite a chase  
I thought I'd found your courthouse  
But the Yankees burned the place.

You always kept your bags packed  
Although you had no fame, and  
Just for the fun of it  
Twice you changed your name.

You never owed any man, or  
At least I found no bills  
In spite of eleven offspring  
You never left a will.

They say our name's from Europe  
Came state side on a ship  
Either they lost the passenger list  
Or granddad gave them the slip.

I'm the only one that's looking  
Another searcher I can't find  
I play (maybe that's his father's name)  
As I go out of my mind.

They said you had a headstone  
In a shady plot  
I've been there twenty times, and  
Can't even find the lot.

You never wrote a letter  
Your Bible we can't find  
It's probably in some attic  
Out of sight and out of mind.

You first married a...Smith  
And just to set the tone  
The other four were Sarahs  
And everyone a Jones.

You cost me two fortunes  
One of which I did not have  
My wife, my house and Fido  
God, how I miss that golden lab.

But somewhere you slipped up,  
Ole Boy, Somewhere you left a track  
And If I don't find you this year  
Well.....Next year I'll be back.

by Wayne Hand

**MEMBERSHIP APPLICATION: NEW or RENEWAL 2012**  
Genealogy Society of Craighead County Arkansas  
P. O. Box 844, Jonesboro, AR 72403

Name(s) \_\_\_\_\_

Street Address \_\_\_\_\_

City, State, Zip \_\_\_\_\_

Phone(s) \_\_\_\_\_

E-mail \_\_\_\_\_ Fax \_\_\_\_\_

Membership:  
INDIVIDUAL (\$15) \_\_\_\_\_  
COUPLE (\$20) \_\_\_\_\_  
CORPORATE (\$35) \_\_\_\_\_

Please make check payable to:  
GSCCA  
P.O. Box 844  
Jonesboro, AR, 72403

As a Member of Genealogy Society of Craighead County, Arkansas, I agree that:

(1) I will assist in locating and preserving public and private records and in making such records available to members of this society and to the general public.

(2) I will support the program and policies of the society.

Date \_\_\_\_\_ Signature(s) \_\_\_\_\_

SURNAMES: \_\_\_\_\_

\_\_\_\_\_

(FOR SOCIETY USE)      Date Received \_\_\_\_\_ Check Number \_\_\_\_\_

Amount \_\_\_\_\_ Card & Packet \_\_\_\_\_ Receipt Number \_\_\_\_\_

~~~~~

Officers:

President – Betty Woodall
Vice President –
Treasurer – Dorothy McCarns
Publicity – William Dunavin

Recording Secretary – Lynn Dowdy
Corresponding Secretary – William Dunavin
Historian – Patsy Penney
Publications – Nancy Matthews

Executive Board Members: Bill Settles, Jan Beasley & Susie Grommet