

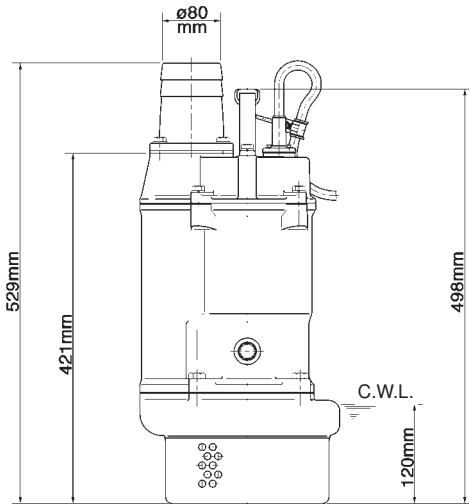
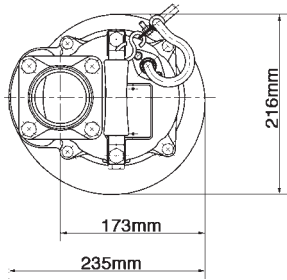


TSURUMI PUMP

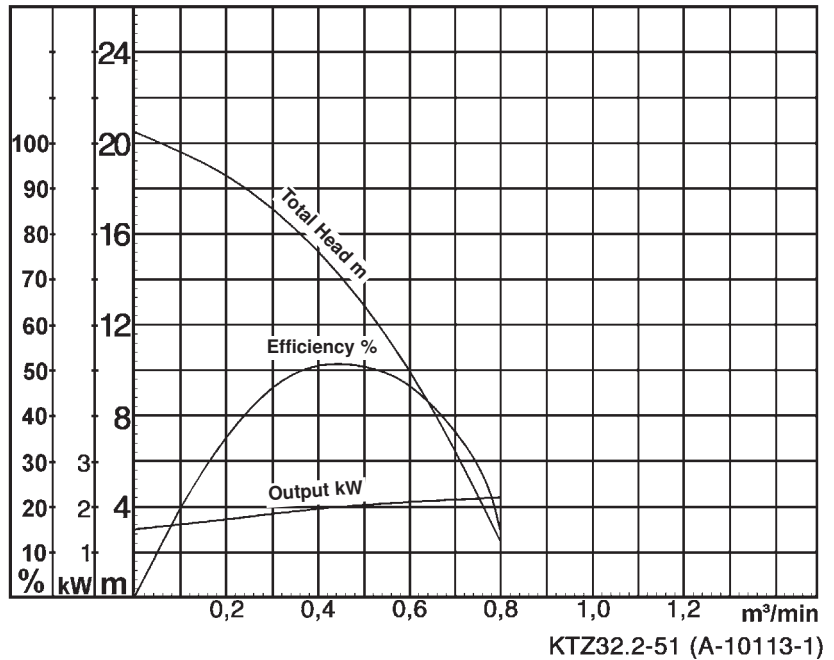
KTZ32.2-51

- data sheet
 - parts list
 - exploded view
 - dimensional drawing
 - sectional drawing
 - performance curve
-
- parts list as Excel-spreadsheet

Data Sheet KTZ32.2-51



C.W.L. = Continuous running water level
KTZ32.2-51 (A-10127-1)



Classification

Electric submersible pump
Protection class IP68
Depth of submersion max. 50m
Open type impeller
Max. solid handling 8,5mm
Suitable for spring water, rain water, ground water, sand carrying water

Electric Motor

Dry-type submersible induction motor,
Insulation class F, 2 poles, 2850 r.p.m.
Direct on line start
Voltage: 400V, 50Hz, 3-phase
Power input: 3,1kW
Power output: 2,2kW
Nominal current: 4,7A
Start current: 34,0A

Electric Cable

20m H07RN-F 4Cx1,5mm²

Motor Protection

Circle thermal protector
(snap-action bi-metal device)

Shaft Seal

Double mechanical seal in oil bath
additional lubrication by oil lifting device

Primary Seal:

silicon carbide on silicon carbide

Secondary Seal:

silicon carbide on silicon carbide

Bearings

Shielded ball bearings, maintenance-free

Materials

Impeller:	Chromium iron casting
Casing:	FC200 (EN-GJL-200)
Suction Cover:	FCD500 (EN-GJS-500-7)
Motor frame:	FC150 (EN-GJL-150)
Shaft:	SUS420J2 (EN-X30Cr13)

Discharge Connection

3" (80mm) BS-Coupling (threaded flange)

Weight

34 kg (dry weight of the pump without cable)

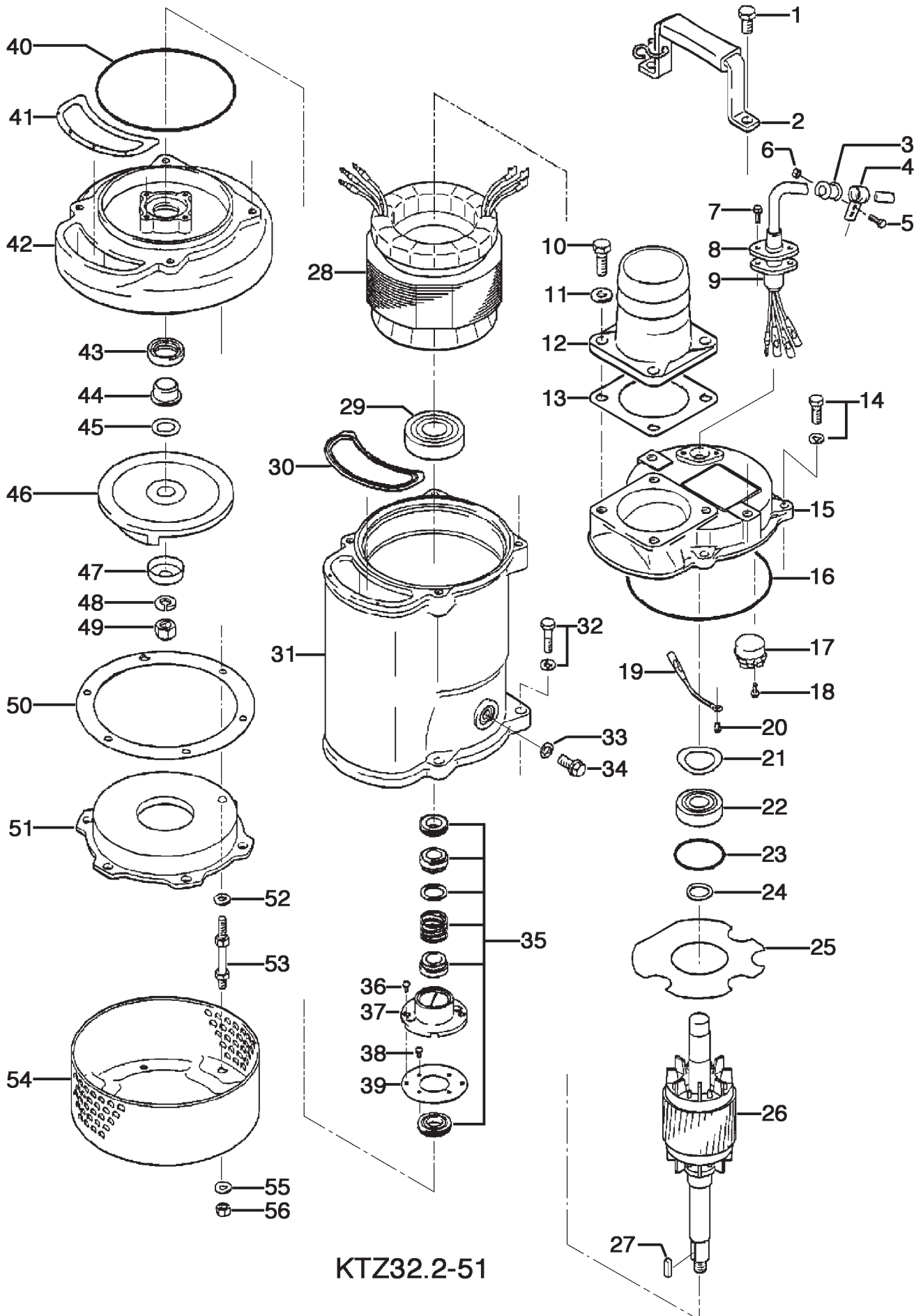
KTZ32.2-51

Control No. KTZ-28-1-1

27.10.2004

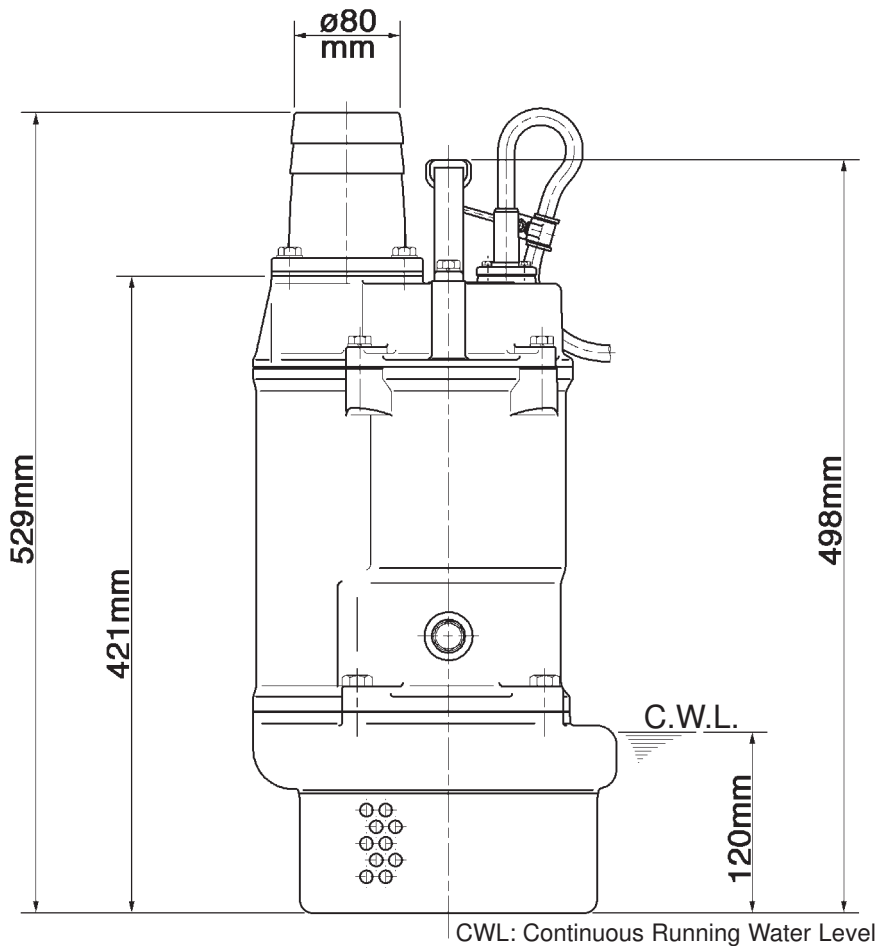
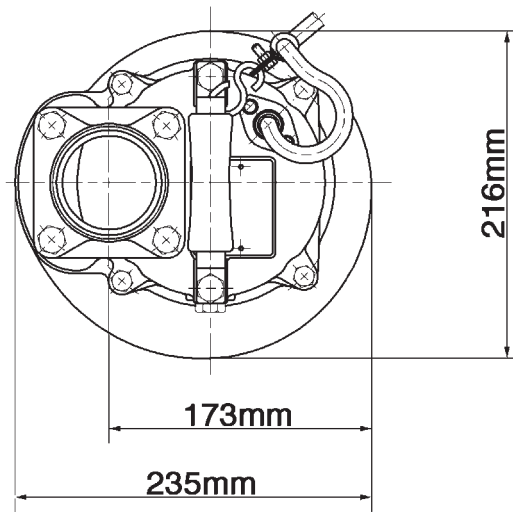
ITEM	CODE No.	DESCRIPTION	Q'TY	SIZE	MATERIAL	WEIGHT kg	REMARKS
1	140-074-15	Hex.Bolt	2	M10x20	SUS304	0.024	
2	068-000-08	Handle	1	KTZ21.5/32.2 (w/Shackle)	SPC+NBR		
3	010-126-17	Cable Clip Rubber	1	HS2	NBR	0.002	
4	010-105-10	Cable Clip	1	SB	SPC	0.01	
5	140-018-37	Hex.Bolt	1	M5x15	SWRM		
6	141-003-58	Hex.Nut	1	M5	SWRM	0.001	
7	140-427-17	Hex.Bolt (w/Plain Washer)	2	M5x15	SUS304	0.001	
8	003-100-13	Gland	1		LB	0.01	
9	001-482-29	Cabletyre Cable Set	20m	H07RN4Cx1,5mm ² (CEE)	LBT(HAR)		
10	140-076-59	Hex.Bolt	4	M10x30	SUS410	0.029	
11	142-128-24	Plain Washer	4	M10	SPC	0.001	
12	032-116-12	Hose Coupling	1	80mm(15L)	ADC	0.42	
12	032-435-10	BS-Coupling (outside thread)	1	80mm	FC		
13	121-181-17	Packing	1	KT-15	NBR	0.02	*
14	140-488-16	Hex.Bolt (w/Spring Washer)	4	M8x30	SUS304		
15	050-420-18	Motor Bracket	1		FC	4.50	
16	122-140-17	O-Ring	1	G-145	NBR	0.001	*
17	053-477-19	Motor Protector 380-420V-50HZ 380-46	1	KA313-GQXL104	(T.C)	4.00	
18	143-126-12	Pan Screw (w/Spring Washer/Plain Wa	2	M4x12	SWRM	0.001	
19	009-292-11	Earth Terminal	1Set	1.25mmx140L			
20	143-085-34	Pan Screw (w/Spring Washer)	1	M4x6	BSBM	0.001	
21	142-389-12	Wave Washer	1	#6204	SK-5	0.001	
22	052-103-18	Bearing	1	6204ZZC3		0.11	
23	122-293-16	O-Ring	1	47xd3.1	NBR	0.002	*
24	061-174-18	Slinger	1	d20xd27x2t	SPC		
25	058-000-01	Lead Wire Protection Plate	1	d61xd136x2t	Resin		
26	055-706-16	Rotor	1Set			3.50	
27	147-017-11	Impeller Key	1	5x5x20l	SUS		
28	056-001-19	Stator 380-420V-50HZ 380-460V-60HZ	1Set				
29	052-108-13	Bearing	1	6305ZZC3		0.24	
30	121-507-13	Packing (Water Way, Upp.)	1	KTZ21.5/32.2	NBR	0.001	*
31	064-000-10	Motor Frame	1		FC	9.00	
32	140-488-16	Hex.Bolt (w/Spring Washer)	4	M8x30	SUS304		
33	121-246-11	Packing	1	d10.3xd16x2t	PE	0.001	*
34	035-000-01	Oil Plug	1	M10x16L	SUS304	0.02	
34	035-125-13	Oil Plug (old version)	1	M10x20(B=13)	SUS304	0.02	old version
35	025-243-17	Mechanical Seal	1	H-20T	SiC+CCBN	0.09	Oil ISO VG32 740ml
36	143-070-23	Pan Screw	2	M5x6	SWRM	0.001	
37	030-144-13	Oil Lifter	1	H-20(A)(T)	Resin	0.038	
38	143-070-10	Pan Screw	4	M5x6	SWRM	0.001	
39	030-154-16	Seal Stopper	1	H-20T	SPCC	0.059	
40	122-139-13	O-Ring	1	G-140	NBR	0.001	*
41	121-501-17	Packing (Water Way, Low.)	1	KTZ21.5/22.2	NBR	0.002	*
42	020-001-01	Pump Casing	1	KTZ21.5/32.2	FC	5.00	
42	020-972-17	Pump Casing (old version)	1	KTZ21.5/32.2	FC	5.00	old version
43	026-105-19	Oil Seal	1	TC-253808	NBR	0.008	
43	026-105-19	Oil Seal (old version)	1	TC-25388	NBR	0.008	old version
44	071-314-13	Shaft Sleeve	1	d20xd25x16l	SUS304	0.025	
45	040-104-25	Impeller Shim		d18.2xd29x0.3t	SUS304	0.001	
46	021-556-27	Impeller (50Hz)	1	KTZ32.2-51	HiCrFC	0.8	
46	021-552-23	Impeller (60Hz)	1	KTZ32.2-61	HiCrFC	1.10	
47	047-113-28	Impeller Thread Protect.Cover	1	No.3A(13.5)	SUS304	0.014	
48	142-165-10	Spring Washer	1	M12	SUS304	0.001	
49	141-032-14	Hex.Cap Nut	1	M12	SUS304	0.02	
50	120-110-12	Packing (S.Cover)		d150xd186x0.3t	PE	0.004	
51	022-000-53	Suction Cover	1	KTZ31.5/32.2	FCD	1.20	
51	022-749-19	Suction Cover (old version)	1	KTZ31.5/32.2	FCD	1.20	old version
52	142-127-23	Plain Washer	3	M8	SPC	0.001	
53	144-492-15	Stud Bolt	3	M8x85(12/30)	SUS410	0.039	
54	023-472-11	Strainer Stand	1	KTZ21.5/32.2	SPCC	0.88	
55	142-127-23	Plain Washer	3	M8	SPC	0.001	
56	141-005-89	Hex.Nut	3	M8	SWRM	0.001	
		<Packing O-Ring Set>					
	173-513-13	Packing O-Ring Set	1Set	(*)			

Exploded View KTZ32.2-51



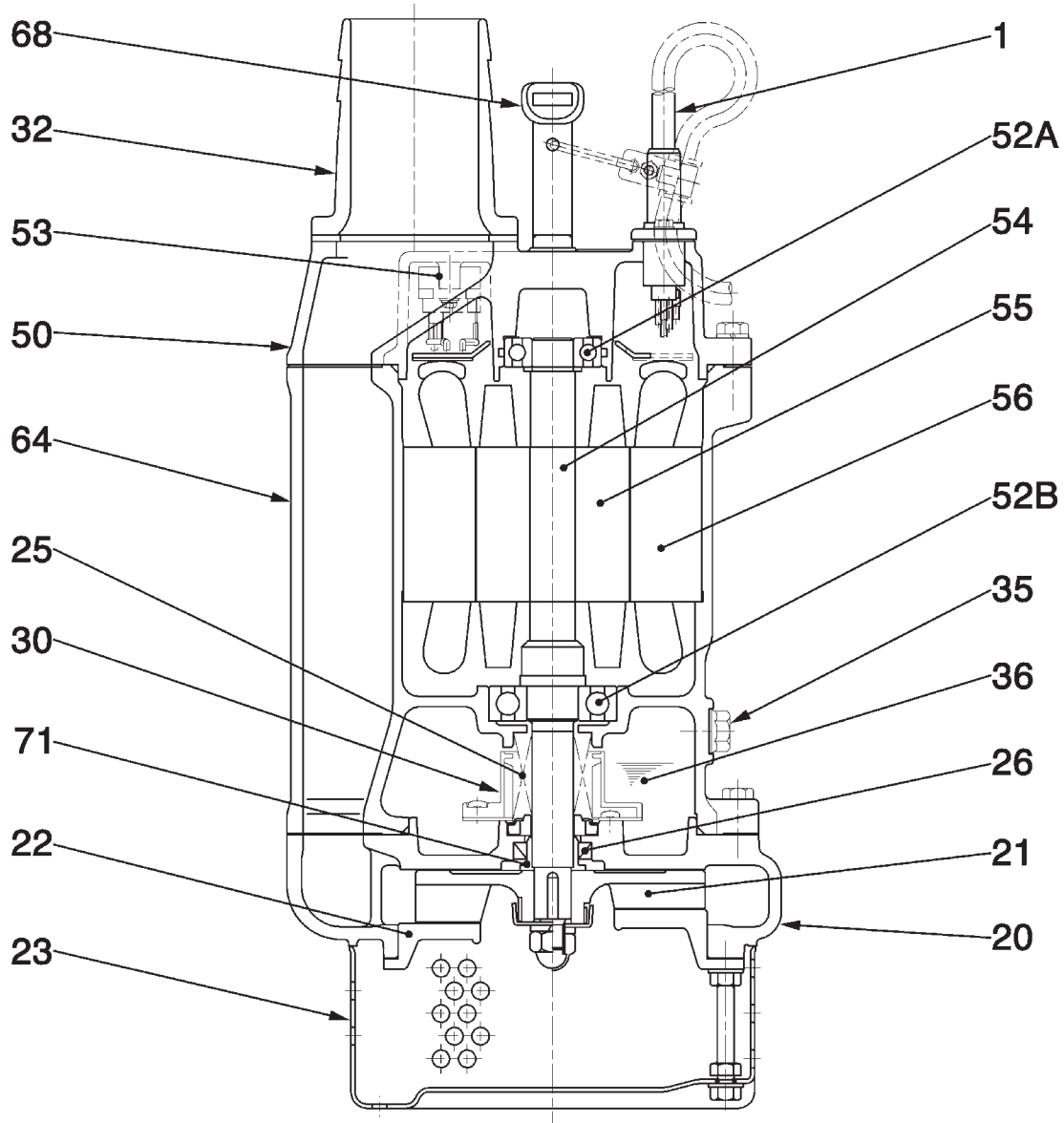
KTZ32.2-51

Dimensional Drawing KTZ32.2-51



CWL: Continuous Running Water Level
KTZ32.2-51 (A-10127-1)

Sectional Drawing KTZ32.2-51



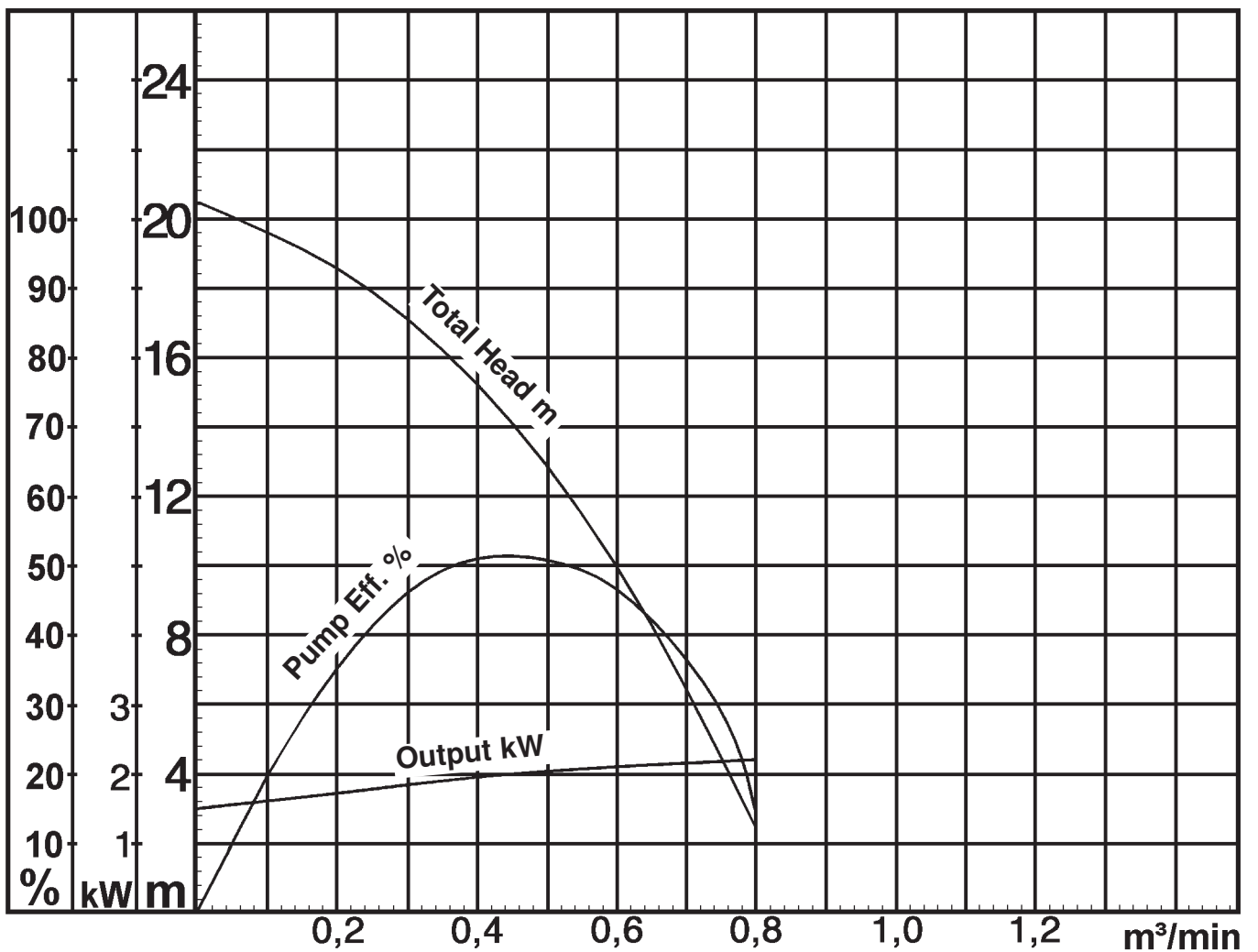
KTZ32.2-51 (A-1031-1)

No.	Description	Qty.	Remarks	No.	Description	Qty.	Remarks
1	Cabtyre Cable	1	H07RN-F	53	Motor Protector	1	
20	Pump Casing	1	FC200 (EN-GJL-200)	54	Shaft	1	SUS420J2 (EN-X30Cr13)
21	Impeller	1	Chromium Iron Casting HiCrFC	55	Rotor	1	
22	Suction Cover	1	FCD500 (EN-GJS-500-7)	56	Stator complete	1	
23	Strainer Stand	1	Steel Plate SPCC	64	Motor Frame	1	FC150 (EN-GJL-150)
25	Mechanical Seal	1	H-20T	68	Handle	1	Steel Plate SPCC + Rubber NBR
26	Oil Seal	1	DD25388	71	Shaft Sleeve	1	SUS304 (EN-X5CrNi18-10)
30	Oil Lifter	1	Plastic				
32	Hose Coupling	1	Aluminium Alloy Casting ADC12				
35	Oil Plug	1	SUS304 (EN-X5CrNi18-10)				
36	Lubricant		Turbine Oil (ISO VG32)				
50	Motor Bracket	1	FC150 (EN-GJL-150)				
52A	Upper Bearing	1	6204ZZC3				
52B	Lower Bearing	1	6305ZZC3				

Pump Performance Curve

KTZ32.2-51

Discharge Bore	80 mm
Total Head	10 m
Capacity	0,60 m ³ /min
Motor Output	2,20 kW
Motor Input	3,10 kW
Phase	3
Voltage	400 V
Frequency	50 Hz
Rated Current	4,9 A
Starting Current	34 A
Poles	2
Revolution	S.S. 2850 r.p.m.
Starting Method	direct on line
Insulation Class	F



KTZ32.2-51 (A-10113-1)