

WASHINGTON STATE

# VOTERS' PAMPHLET

**YOUR BALLOT WILL BE MAILED BY MAY 6, 2016**

**(800) 448-4881 | [vote.wa.gov](http://vote.wa.gov)**



**PRESIDENTIAL PRIMARY  
MAY 24, 2016**



# Introduction

I'm pleased to present you this special 2016 Presidential Primary Voters' Pamphlet.

This year's Presidential Primary season has drawn an unusually high level of voter and media interest across the country—and now it's our turn to have our voices heard.

This pamphlet provides information from the candidates about their background and views, along with contact information for their campaigns.

You may be unfamiliar with our Presidential Primary, since we have not had one for eight years. The primary was created in 1989 as a citizens' Initiative to the Legislature. The Presidential Primary is the only Washington State election in which you are required to select a political party.

Our state also has a caucus process. Democrats have chosen to use the caucus process to allocate their national convention delegates; Republicans will use the results of this primary to allocate theirs.

Candidates from both parties will appear on your primary ballot. It is important to note that you are required to declare a party for the primary contest you're voting in. The declarations, written by the parties, appear on the return envelope. Without your signature and party selection, your vote cannot be counted.

All registered Washington voters are urged to take part in this election. We recommend that you return your ballot to a drop box in advance of the May 24 deadline.



Mark Neary  
Assistant Secretary of State



@secstatewa



/WASecretaryofState  
/WashingtonStateElections

Voting in

# the Presidential Primary



Your ballot will be mailed by **May 6**.

**1** Read the declarations on your return envelope.

**2** Mark **one** political party declaration box (required).

**3** Sign and date the declarations (required).

A diagram of a ballot return envelope insert. It contains three numbered steps: 1. Voter's Declaration: I do solemnly swear or affirm under penalty of perjury that I am: a citizen of the State of Washington; at least 18 years old on election day; voting only once in this election; not under the authority of a Washington felony conviction; and not disqualified from voting due to a court order. It is illegal to forge or attempt to forge a ballot, to attempt to vote more than once, or to falsely sign this declaration. Violation of this declaration is punishable by imprisonment of five years, a maximum fine of \$10,000, or both. 2. Mark one party declaration box (required). Below this are two options: Democratic Party (with a checkbox) and Republican Party (with a checkbox). Each option includes a declaration statement. 3. Sign & date. Below this are fields for signature of voter (required), date, and phone. A note says "If you cannot sign make a mark and have two witnesses sign below." Below that are fields for witness 1 signature and witness 2 signature. Arrows from the numbered instructions on the left point to the corresponding sections of the form.

**4** Vote for **one** candidate from the political party you marked in Step 2.

**i** Follow steps shown on the insert included in your ballot packet to return your voted ballot.

## Your vote will not count unless you mark one party declaration and sign.

Washington voters do not declare a party preference when we register to vote.

For the Presidential Primary only, the major political parties require voters to subscribe to a specific party declaration. For 2016, both the Republican and Democratic parties submitted party declarations for the Presidential Primary.

You must sign a political party declaration on the ballot return envelope. The declaration signed must match your voted candidate's political party.

# Voter Registration Qualifications

You must be at least 18 years old, a U.S. citizen, a resident of Washington State, and not under Department of Corrections supervision for a Washington State felony conviction.

The online and mail-in voter registration and address update deadline has passed. Submit your registration or address update for the next election at [vote.wa.gov](https://vote.wa.gov).

**New voters** may register in person until May 16 at your county elections department.

**Military voters** are exempt from registration deadlines.

# Voting Accessibility Options

## Alternative Voters' Pamphlet Formats

Audio and plain text voters' pamphlets are available at [vote.wa.gov](https://vote.wa.gov), or call (800) 448-4881 to subscribe to receive a copy on CD or USB.

## Accessible Voting Units

Contact your county to find the accessible voting unit near you! Contact information for every county can be found on pages 13-14 of this pamphlet.

# Language Assistance

## Việt Nam được nói

Tất cả cử tri ở Tiểu Bang Washington có thể truy cập sách dành cho cử tri và đơn ghi danh cử tri bằng tiếng Việt trực tuyến tại [vote.wa.gov](https://vote.wa.gov).

Nếu quý vị hoặc người nào quý vị biết cần trợ giúp ngôn ngữ, xin vui lòng gọi **(800) 448-4881**.

## 中國口語

所有華盛頓州的選民都可在網站 [vote.wa.gov](https://vote.wa.gov) 查看中文選民手冊和選民登記表格。

如果您或您認識的人需要語言協助，請致電 **(800) 448-4881**。

## Se habla español

Todos los votantes del estado de Washington tienen acceso al folleto electoral y a los formularios de inscripción en español por internet en [vote.wa.gov](https://vote.wa.gov).

Si usted o alguien que conoce necesitan asistencia en español llame al **(800) 448-4881**.

# Election Results

Download the Election Results app from the app store today!

Search for "WA State Election Results" in the Apple, Android, or Windows app stores.

Results are announced after 8 p.m. on Election Day and are updated frequently.

# Table of Contents

Introduction . . . . .	2
Voting in the Presidential Primary . . . . .	3
Additional Voter Information . . . . .	4
<b>Democratic Candidates</b>	
Hillary Clinton . . . . .	6
Bernie Sanders . . . . .	7
<b>Republican Candidates</b>	
Ben Carson. . . . .	8
Ted Cruz . . . . .	9
John R. Kasich . . . . .	10
Donald J. Trump . . . . .	11
Vote in Honor of a Vet . . . . .	12
Contact Your County Elections Department. . . . .	13

 Candidate statements are printed exactly as submitted. The Office of the Secretary of State does not make corrections of any kind or verify statements for truth or fact.

 **Who donates to campaigns?**  
Information on financial contributors for presidential candidates is available through the **Federal Election Commission** at [fec.gov](http://fec.gov) or (800) 424-9530.

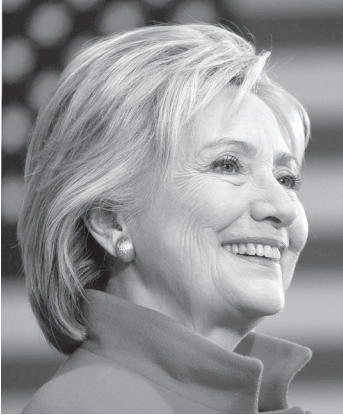
 **Contact Political Parties**  
**Washington State Democrats**  
PO Box 4027  
Seattle, WA 98194  
(206) 583-0664  
[info@wa-democrats.org](mailto:info@wa-democrats.org)  
[wa-democrats.org](http://wa-democrats.org)  
  
**Washington State Republican Party**  
11811 NE 1st St, Ste A306  
Bellevue, WA 98005  
(425) 460-0570  
[wagop@wsrp.org](mailto:wagop@wsrp.org)  
[wsrp.org](http://wsrp.org)

**Find a Ballot Drop Box** 

Locate the ballot drop box nearest you by visiting [myvote.wa.gov](http://myvote.wa.gov). Locations can be found by logging into [myvote.wa.gov](http://myvote.wa.gov), then selecting “Drop Box & Voting Center Locations.”



## Presidential Candidates Democratic Party



Hillary

# Clinton

Democratic Party Candidate

### Contact Information

(646) 854-1432  
info@hillaryclinton.com  
www.hillaryclinton.com

### Elected Experience

As senator from New York, Hillary expanded health care access for 9/11 responders and veterans, and worked to revitalize rural communities.

### Other Professional Experience

From advocating for children as a young lawyer to defending human rights around the world as Secretary of State, Hillary has dedicated her career to fighting for children and families.

### Education

As a Yale Law student, Hillary defended children against abuse, addressed systemic racism, and provided free legal help to those who couldn't afford it.

### Community Service

From fighting to expand education for Arkansas' poorest children to helping provide health insurance to 8 million children, Hillary's devoted her life to serving others.

### Statement

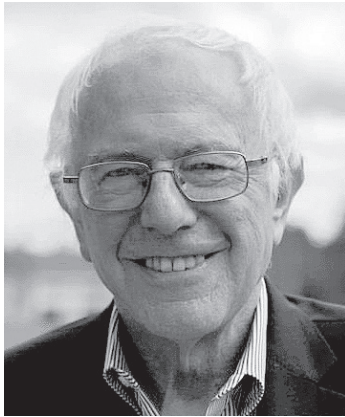
I'm running for president because I believe we need to tear down all the barriers that prevent Americans from reaching our full potential. It's important that Wall Street never again threatens Main Street. But America isn't a single-issue country, and we need more than a plan for the biggest banks. The middle class needs a raise. We need more good jobs that pay well and can't be outsourced, that provide dignity and a path to a brighter future. We can create those good jobs by building on the progress we've made under President Obama. Let's make new investments in manufacturing, small business, scientific research and enough clean energy to power every home in America.

Let's break down the barriers that keep people on the sidelines of our economy, especially women. We've waited long enough for quality, affordable childcare and paid family and medical leave, and equal pay. Let's break down the barriers that stop our young people from getting the best possible start in life. We need to support great teachers and great schools in every ZIP code, make college more affordable, and help relieve the crushing burden of student debt. Let's take on the epidemic of gun violence in America. We also have to face the reality of systemic racism that, more than a half a century after Rosa Parks sat and Dr. King marched and John Lewis bled, still plays a significant role in determining who gets ahead in America and who gets left behind. We have to invest in communities of color and reform our broken criminal justice and immigration systems. We have to guarantee opportunity, dignity, and justice for every American.

The future we want is within our grasp—let's build it together.



# Presidential Candidates Democratic Party



**Bernie  
Sanders**  
Democratic Party Candidate

### **Contact Information**

(855) 423-7643  
info@berniesanders.com  
www.berniesanders.com

### **Elected Experience**

United States Senator, Vermont, 2007 to Present; United States Representative, Vermont, 1991 to 2007; Mayor, City of Burlington, 1981 to 1989

### **Other Professional Experience**

College Instructor, Freelance Writer, Documentary Filmmaker, Carpenter

### **Education**

Brooklyn College (Attended); University of Chicago, A.B., 1964

### **Community Service**

No information submitted.

### **Statement**

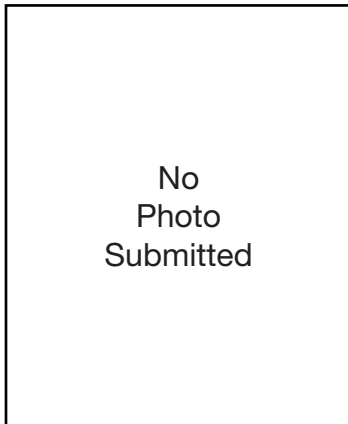
I am asking people not simply to support my candidacy for president, but to be part of a movement of millions of Americans who stand up and say loudly and clearly that this country and our government belong to all of us, and not just a handful of wealthy campaign contributors and large corporations. To my mind, this is the only way to address the major economic, political, social, racial and environmental challenges facing our country.

Given the serious crises this country faces, now is not the time for the same old establishment politics. I am running for President to fight income inequality, create millions of jobs, raise wages, and provide health care for all Americans as a human right. Together, our movement will make public colleges and universities tuition-free, combat climate change, reform a broken criminal justice system, ensure equal pay, and reclaim our democracy from the billionaires who are buying our elections.

We need an economy and a system of justice that works for all Americans, not just the people on top. We need a political revolution demanding our government represents us all, not just the top 1%. If we stand together, there is nothing we cannot accomplish.



## Presidential Candidates Republican Party



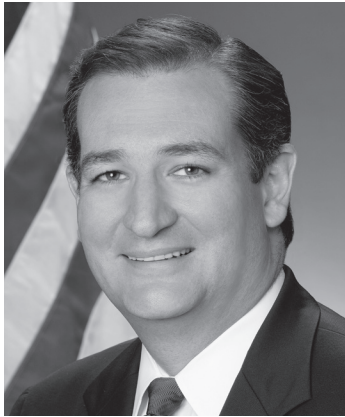
Ben  
**Carson**  
Republican Party Candidate

**Ben Carson publicly suspended his campaign on March 4, however the candidate did not submit a Withdrawal of Candidacy.**

This candidate did not submit a candidate statement.



# Presidential Candidates Republican Party



Ted

## Cruz

Republican Party Candidate

### Contact Information

(713) 353-4330  
ted@tedcruz.org  
www.tedcruz.org

### Elected Experience

United States Senator

### Other Professional Experience

Solicitor General of Texas, Partner at Morgan, Lewis & Bockius LLP, Adjunct Professor of Law at the University of Texas School of Law, Director of the Office of Policy Planning at the Federal Trade Commission, Associate Deputy Attorney General at the U.S. Department of Justice, and as Domestic Policy Advisor on the 2000 Bush-Cheney campaign. Law Clerk for Chief Justice Rehnquist, Supreme Court of the United States and Judge Luttig, US Court of Appeals for the Fourth Circuit.

### Education

Juris Doctor, Harvard Law School. Bachelors in Public Policy, Princeton University

### Community Service

No information submitted.

### Statement

Ted Cruz has proven to be a passionate and effective fighter for limited government, economic growth, and the Constitution.

Ted's calling to public service has been inspired by his first-hand observation of the pursuit of freedom and opportunity in America. Ted's mother was born in Delaware to an Irish and Italian working-class family. She became the first in her family to go to college. Ted's father fled to the United States in 1957, after having been tortured and imprisoned in Cuba. Today, Ted has been a tireless fighter for liberty his entire life because his family knows what it is like to lose it.

As Solicitor General for the State of Texas and in private practice, Ted authored more than 80 U.S. Supreme Court briefs and argued 43 oral arguments, including nine before the U.S. Supreme Court, and has won an unprecedented series of landmark national victories including defending U.S. sovereignty against the UN and the World Court, defending our Second Amendment right to keep and bear arms, defending the constitutionality of the Ten Commandments monument at the Texas State Capitol and the words "under God" in the Pledge of Allegiance.

In the U.S. Senate, Ted has led the fight to repeal Obamacare, to stop President Obama's illegal and unconstitutional executive amnesty, and to defend life, marriage, the First Amendment, the Second Amendment, and our entire Bill of Rights. And most important, he's kept his promise to speak the truth and do what he said he'd do.

Ted, his wife Heidi, their two daughters, and his entire family have been blessed to live the American Dream — the idea that anyone, through hard work and determination, can achieve anything. And he is committed to ensuring every family has that same opportunity.



## Presidential Candidates Republican Party



John R.

# Kasich

Republican Party Candidate

### Contact Information

(614) 972-8580

info@johnkasich.com

www.johnkasich.com

### Elected Experience

Ohio Governor, 2010-present; Congressman, U.S. House of Representatives, 1983-2000; Budget Committee Chair U.S. House of Representatives; Senator, Ohio State Senate, 1979-1983

### Other Professional Experience

"Heartland with John Kasich", Anchor on Fox News Channel, 2001-2009; Three-time New York Times bestselling author; Managing Director, Lehman Brothers, 2001-2008

### Education

Graduate of Ohio State University, 1974

### Community Service

Husband, father, friend, person of faith, leader, change agent. John Kasich is a lot of things. Through them all runs his honest, direct, authentic, tenacious approach to life that has allowed him, time and again, to do what they said couldn't be done.

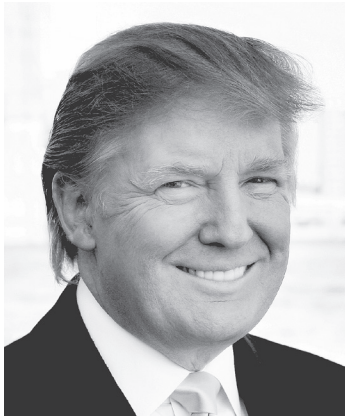
### Statement

John Kasich doesn't just talk the talk, he walks the walk. Only one candidate for president knows what it takes to shake-up the system and lift America. Why? Because he's done it. In Washington DC he was the chief architect of four balanced budgets--the first time that had happened since 1969 and it hasn't happened since. As governor of Ohio, he eliminated the largest budget shortfall in state history all while cutting taxes by \$5 billion. As a result, Ohio has become one of the top job creators in America. As president, John Kasich is prepared to shift power, money and influence back to where it belongs -- the states.

Growing up in McKees Rocks, Pennsylvania, a working-class town near Pittsburgh, John Kasich learned the importance of lending a hand-up, not a hand out. By growing the economy, he has successfully improved care for those struggling with mental illness, addiction and the working poor. He's fought against human trafficking and transformed how Ohio approaches community-police relations. Consistently, John Kasich has turned aside from the politics of division that gets us nowhere.

America needs a leader who has the strength, ability and courage to unite our nation and make our country better for our children and grandchildren. John Kasich is that leader.

# Presidential Candidates Republican Party



Donald J.

## Trump

Republican Party Candidate

### Contact Information

(646) 736-1779

[clewandowski@donaldtrump.com](mailto:clewandowski@donaldtrump.com)

[www.donaldjtrump.com](http://www.donaldjtrump.com)

### Elected Experience

None

### Other Professional Experience

Real Estate developer, golf course developer, best-selling author, hotelier, television producer, entrepreneur.

### Education

Graduate of the New York Military Academy Graduate of the Wharton School, the University of Pennsylvania, Philadelphia, Pennsylvania

### Community Service

Grand Marshall New York City Veterans Day Parade, New York Police Athletic League, United Way of New York City, countless philanthropic activities.

### Statement

Donald J. Trump wants to Make America Great Again. He believes we need to reestablish our proper place in the world by steering our government away from special interests and introducing policies that will put money in people's pockets, restore love of country and raise our status in the world.

Mr. Trump believes in free markets, the importance of a strong family, a culture of Life, a strong military and our country's sacred obligation to take care of our veterans and their families.

Our country has been poorly served by the political class who value their self-interest over the interests of the United States and its citizens. Mr. Trump vows to end the corrupting influence of special interests once and for all.

Under a Trump Administration, American will begin winning again. No longer will China, Mexico, Japan and other countries manipulate their currencies in order to benefit their citizens at the expense of our citizens.

We need free and fair trade. We must restore the integrity of our national borders. A country cannot exist without strong borders. We will welcome international visitors, but we must build a wall to protect our southern border.

Our Federal tax burden inhibits economic growth and takes too much from hard working Americans. We must reduce the burden by lowering rates, eliminating loopholes, and simplifying the tax code.

We must pay particular attention to fixing our corporate tax structure so capital and jobs will come back to America. We will rebuild our military, return education to the parents and students, make college affordable and make sure we fix our healthcare system by getting rid of Obamacare and replacing it with free market solutions.

We will protect the Second Amendment and will defend religious liberty for all. Together, we will Make America Great Again.

## VOTE IN HONOR OF A VET

Our right to vote is protected by the extraordinary men and women of the U.S. Armed Forces. Now is your chance to thank them for their service!

The Office of the Secretary of State invites you to recognize active military and veterans from Washington State by posting a personal story and a photo. We'll send you a pin to wear proudly in respect and gratitude for your veteran.

### YOU CAN PARTICIPATE IN 3 EASY STEPS

1

Visit our website  
[sos.wa.gov/elections/honorveteran/](https://sos.wa.gov/elections/honorveteran/)



2

Upload your story  
and a picture



3

You will receive a pin to  
wear on Election Day



## SHARE YOUR STORY!

[SOS.WA.GOV/ELECTIONS/HONORVETERAN](https://sos.wa.gov/elections/honorveteran)

# Contact your county elections department

---

**Adams County**

210 W Broadway, Ste 200  
Ritzville, WA 99169  
(509) 659-3249  
heidih@co.adams.wa.us

---

**Asotin County**

PO Box 129  
Asotin, WA 99402  
(509) 243-2084  
dmckay@co.asotin.wa.us

---

**Benton County**

PO Box 470  
Prosser, WA 99350  
(509) 736-3085  
elections@co.benton.wa.us

---

**Chelan County**

PO Box 4760  
Wenatchee, WA 98807  
(509) 667-6808  
elections.ballots@co.chelan.wa.us

---

**Clallam County**

223 E 4th St, Ste 1  
Port Angeles, WA 98362  
(360) 417-2221  
auditor@co.clallam.wa.us

---

**Clark County**

PO Box 8815  
Vancouver, WA 98666-8815  
(360) 397-2345  
elections@clark.wa.gov

---

**Columbia County**

341 E Main St, Ste 3  
Dayton, WA 99328  
(509) 382-4541  
sharon\_richter@co.columbia.wa.us

---

**Cowlitz County**

207 4th Ave N, Rm 107  
Kelso, WA 98626-4124  
(360) 577-3005  
elections@co.cowlitz.wa.us

---

**Douglas County**

PO Box 456  
Waterville, WA 98858  
(509) 745-8527  
elections@co.douglas.wa.us

---

**Ferry County**

350 E Delaware Ave, Ste 2  
Republic, WA 99166  
(509) 775-5225 ext. 1139  
elections@co.ferry.wa.us

---

**Franklin County**

PO Box 1451  
Pasco, WA 99301  
(509) 545-3538  
elections@co.franklin.wa.us

---

**Garfield County**

PO Box 278  
Pomeroy, WA 99347-0278  
(509) 843-1411  
ddeal@co.garfield.wa.us

---

**Grant County**

PO Box 37  
Ephrata, WA 98823  
(509) 754-2011 ext 2793  
elections@co.grant.wa.us

---

**Grays Harbor County**

100 W Broadway, Ste 2  
Montesano, WA 98563  
(360) 964-1556  
elections@co.grays-harbor.wa.us

---

**Island County**

PO Box 1410  
Coupeville, WA 98239  
(360) 679-7366  
elections@co.island.wa.us

---

**Jefferson County**

PO Box 563  
Port Townsend, WA 98368-0563  
(360) 385-9119  
elections@co.jefferson.wa.us

---

**King County**

919 SW Grady Way  
Renton, WA 98057  
(206) 296-8683  
elections@kingcounty.gov

---

**Kitsap County**

614 Division St, MS 31  
Port Orchard, WA 98366  
(360) 337-7128  
auditor@co.kitsap.wa.us

---

**Kittitas County**

205 W 5th Ave, Ste 105  
Ellensburg, WA 98926-2891  
(509) 962-7503  
elections@co.kittitas.wa.us

---

**Klickitat County**

205 S Columbus, Stop 2  
Goldendale, WA 98620  
(509) 773-4001  
voting@co.klickitat.wa.us

# Contact your county elections department

---

**Lewis County**

PO Box 29  
Chehalis, WA 98532-0029  
(360) 740-1278  
elections@lewiscountywa.gov

---

**Lincoln County**

PO Box 28  
Davenport, WA 99122-0028  
(509) 725-4971  
sjohnston@co.lincoln.wa.us

---

**Mason County**

PO Box 400  
Shelton, WA 98584  
(360) 427-9670 ext 469  
elections@co.mason.wa.us

---

**Okanogan County**

PO Box 1010  
Okanogan, WA 98840-1010  
(509) 422-7240  
elections@co.okanogan.wa.us

---

**Pacific County**

PO Box 97  
South Bend, WA 98586  
(360) 875-9317  
jkidd@co.pacific.wa.us

---

**Pend Oreille County**

PO Box 5015  
Newport, WA 99156  
(509) 447-6472  
elections@pendoreille.org

---

**Pierce County**

2501 S 35th St, Ste C  
Tacoma, WA 98409  
(253) 798-VOTE (8683)  
pcelections@co.pierce.wa.us

---

**San Juan County**

PO Box 638  
Friday Harbor, WA 98250-0638  
(360) 378-3357  
elections@sanjuanco.com

---

**Skagit County**

PO Box 1306  
Mount Vernon, WA 98273  
(360) 416-1702  
scelections@co.skagit.wa.us

---

**Skamania County**

PO Box 790  
Stevenson, WA 98648-0790  
(509) 427-3730  
elections@co.skamania.wa.us

---

**Snohomish County**

3000 Rockefeller Ave, MS 505  
Everett, WA 98201-4060  
(425) 388-3444  
elections@snoco.org

---

**Spokane County**

1033 W Gardner Ave  
Spokane, WA 99260  
(509) 477-2320  
elections@spokanecounty.org

---

**Stevens County**

215 S Oak St, Rm 106  
Colville, WA 99114-2836  
(509) 684-7514  
elections@co.stevens.wa.us

---

**Thurston County**

2000 Lakeridge Dr SW  
Olympia, WA 98502-6090  
(360) 786-5408  
elections@co.thurston.wa.us

---

**Wahkiakum County**

PO Box 543  
Cathlamet, WA 98612  
(360) 795-3219  
tischerd@co.wahkiakum.wa.us

---

**Walla Walla County**

PO Box 2176  
Walla Walla, WA 99362-0356  
(509) 524-2530  
elections@co.walla-walla.wa.us

---

**Whatcom County**

PO Box 398  
Bellingham, WA 98227-0398  
(360) 778-5102  
elections@co.whatcom.wa.us

---

**Whitman County**

PO Box 191  
Colfax, WA 99111  
(509) 397-5284  
elections@co.whitman.wa.us

---

**Yakima County**

PO Box 12570  
Yakima, WA 98909-2570  
(509) 574-1340  
iVote@co.yakima.wa.us