

WOOD VANITY

A Specify Model Wood cabinet only.

See hardware pg B.1.2 for prices on pulls and legs.

Oval Vanity for Countersink (34" height)

Item	Description	Retail Price
VF1AN	Anigre Veneer	\$ 4,320.00
VF1SA	Sapele Veneer	\$ 4,320.00
VF1SY	Sycamore Veneer	\$ 4,500.00
VF1WA	Walnut Veneer	\$ 4,320.00

For Countersink prices see pg 3.5.4 Item 450 (30" width)
For use with black, white or cobalt glass colors only,
or customer's own counter material.

Oval Vanity for Freestanding Basin (30" height)

Item	Description	Retail Price
VF2AN	Anigre Veneer	\$ 4,320.00
VF2SA	Sapele Veneer	\$ 4,320.00
VF2SY	Sycamore Veneer	\$ 4,500.00
VF2WA	Walnut Veneer	\$ 4,320.00

For Freestanding Basin prices see pg 2.1.1.
For Countertop prices see pg 4.5.4 Item 650 (30" width)
For use with black, white or cobalt glass colors only,
or customer's own counter material.

"T" Vanity (36" width)

Item	Description	Retail Price
VF3AN	Anigre Veneer	\$ 2,560.00
VF3SA	Sapele Veneer	\$ 2,560.00
VF3SY	Sycamore Veneer	\$ 2,740.00
VF3WA	Walnut Veneer	\$ 2,560.00

For Freestanding Basin prices see pg 2.1.1

G.N. Vanity (36" width)*

Item	Description	Retail Price
VF4AN	Anigre Veneer	\$ 2,250.00
VF4SA	Sapele Veneer	\$ 2,250.00
VF4SY	Sycamore Veneer	\$ 2,430.00
VF4WA	Walnut Veneer	\$ 2,250.00

* Available in custom sizes and with optional drawers by quotation.
May be used with Freestanding Basin alone (pg 2.1.1),
combination of Freestanding Basin and Vitraform Countertop
(pg 4.4.1 & 4.4.4), or Vitraform Countersink (pg 3.4.1 & 3.4.4).

Vitraform glass sinks, cabinet pulls, counter support and legs additional.

Standard Veneer: 8 week lead time. Custom Veneer options by quotation, 12-14 week lead time. Prices for wood cabinets only.
Crating charge \$150.00 net each.

Example	Specify these items separately if required:
Order No: VF4AN VF4 Vitraform VF4 G.N. Vanity AN Anigre veneer	1. Countertop (pgs 4.4.1 or 4.4.4) and Freestanding Basin (pg 2.1.1) or Countersink (pg 3.4.1 & 3.5.1) 2. Drain (see pg B.1.1) 3. Mirror (see pgs C.4.1, C.4.3 & C.4.4) 4. Legs and Pulls (see pg B.1.2) 5. Support for Counter (see pg B.1.3)

WOOD VANITY

P.O. No: _____ Date: _____ Sales Person: _____ Tel: _____ Ext: _____

Vanity Order	Quantity: _____ Please use additional Order Forms for non-identical orders.			Vanity Hardware	See Hardware pg B.1.2-3	Qty.	Item/Fin. #	Price
	Order No: _____	<input type="checkbox"/> 6" Tapered Leg						
	A	<input type="checkbox"/> Two Part Leveling Leg						
Price: \$ _____	<input type="checkbox"/> Flush Clips							
	<input type="checkbox"/> U-Channel							
	<input type="checkbox"/> Vitraform Cabinet Pulls							

Notes

Net Crating Charge	<input type="checkbox"/> Net Crating Charge Per Vanity including Countersink or Countertop \$150.00
---------------------------	---

Shipping Information	Ship Via: <input type="checkbox"/> Best Way or <input type="checkbox"/> Specify Truck Line: _____			
	Bill to:			
	Company Name		Contact	
	Address	City	State	Zip
	Phone	Fax	Email	
	Ship to:			
	Name			
	Shipping Address	City	State	Zip
	Phone	Contact		
	More Info: Ship Partials: <input type="checkbox"/> YES <input type="checkbox"/> NO			
	Date required	Mark boxes	Other	

Tel 303.295.1010 800.338.5725 Fax 303.292.1161 www.vitraform.com

3500 Blake St. Denver, CO 80205

VITRAFORM™

Oval Vanity Item No. VF1

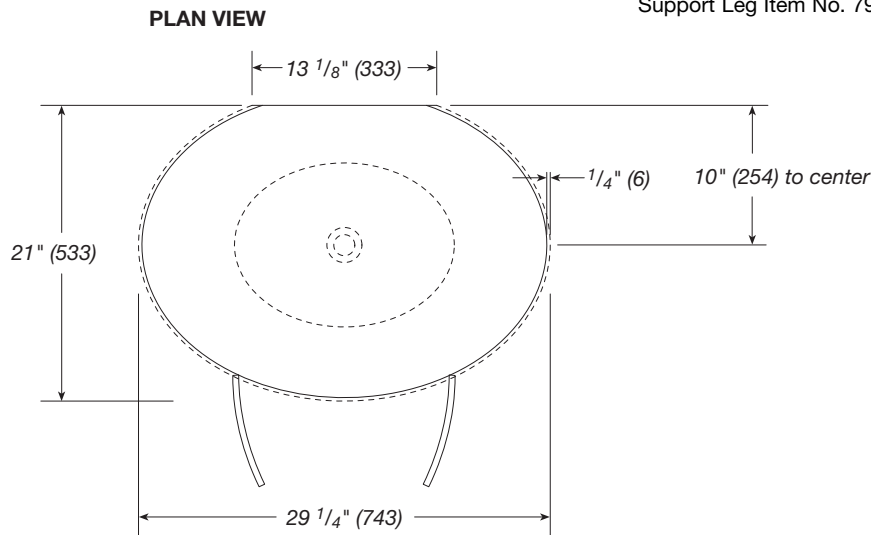
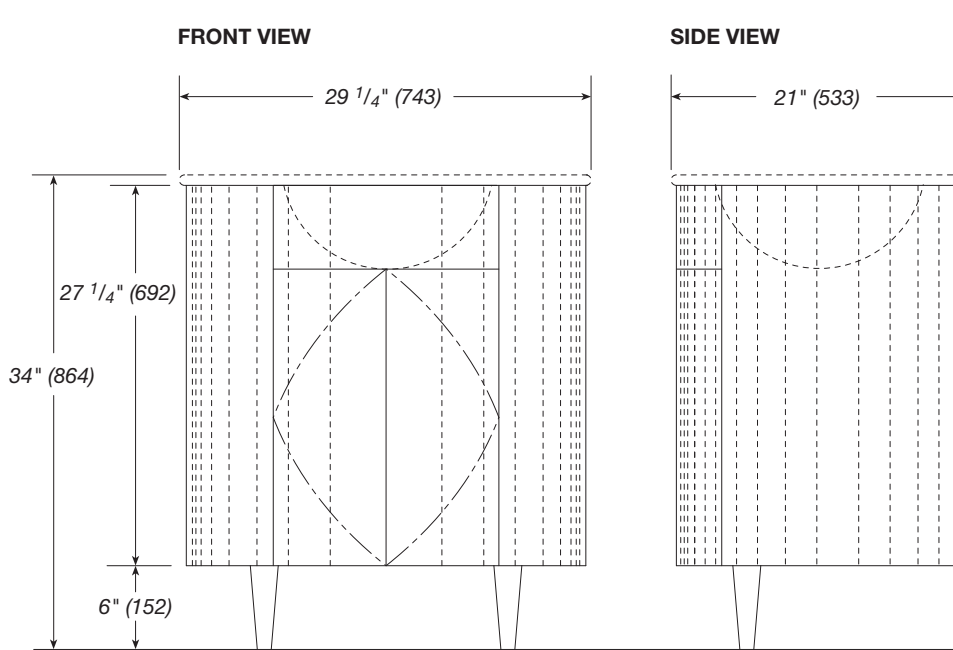
Wood cabinet only.
Available in a variety of standard or custom veneers.

Order Vitraform Countersink separately.
Countersink offered in White, Black or Cobalt only.

Provide wall mount or deck mount faucet specification,
including location.
Wall mount spout projection min. 7" max. 8"

Shown with: Oval Countersink (see pg 3.5.4)
and Tapered Leg (see pg B.3.9)

Example	
Order No:	VF1 WA
	A
VF1	Vitraform Oval Vanity for Countersink
WA	Walnut veneer
Specify these items separately if required:	
1.	Wood Vanity (shown here)
2.	Countersink (30" price, see pg 3.5.4 Item 450 in Black, White or Cobalt only).
3.	Drain (see pg B.1.1)
4.	Hardware (see pg B.1.2 for choice of legs and pulls)
5.	Mirror (if required see pg C.4.3 & C.4.4)



OPTION: see also 2 Part Counter Support Leg Item No. 790

Oval Vanity Item No. VF2

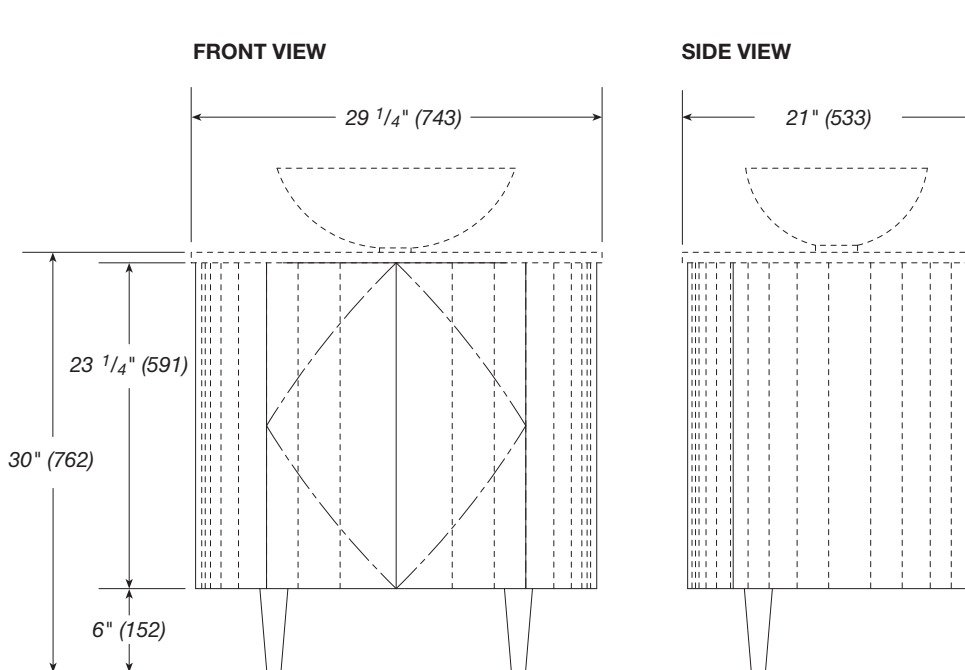
Wood cabinet only.
Available in a variety of standard or custom veneers.

Order Vitraform Freestanding Basin and Countertop separately.
Countertop offered in White, Black or Cobalt only.

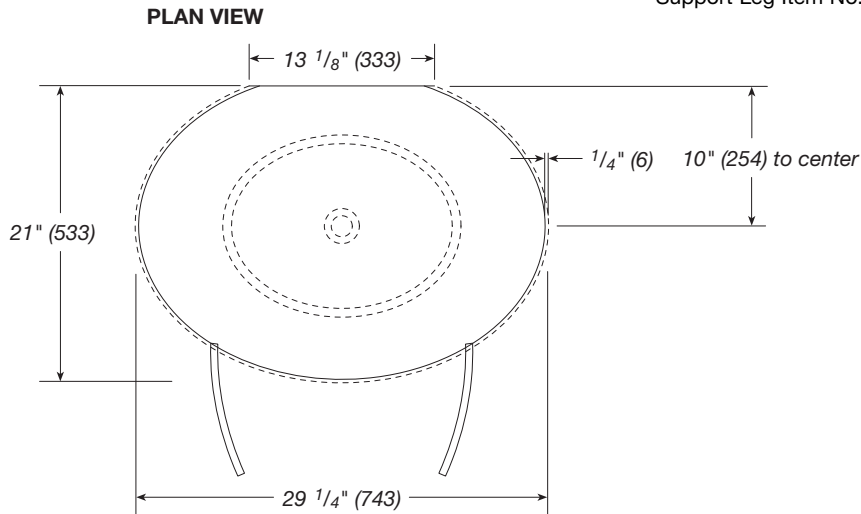
Provide wall mount or deck mount faucet specification, including location. Wall mount spout projection min. 7" max. 8"

Shown with: Oval Freestanding Basin 250 (see section 2.0) and Countertop 650 (see pg 4.5.4) and Tapered Leg (see pg B.3.9)

<p>Example</p> <p>Order No: VF2 AN</p> <p style="text-align: center;">A</p> <p>VF2 Vitraform Oval Vanity for Freestanding Basin AN Anigre veneer</p>
<p>Specify these items separately if required:</p> <ol style="list-style-type: none"> Countertop (30" price, see pg 4.5.4 Item 650 in Black, White or Cobalt only). Freestanding Basin (see pg 2.1.1) Drain (see pg B.1.1) Hardware (see pg B.1.2 for choice of legs and pull) Mirror (if required see pg C.4.3 & C.4.4)



OPTION: see also Two Part Counter Support Leg Item No. 790



www.vitraform.com

Fax 303.292.1161

800.338.5725

Tel 303.295.1010

3500 Blake St. Denver, CO 80205

VITRAFORM™

T Vanity Item No. VF3

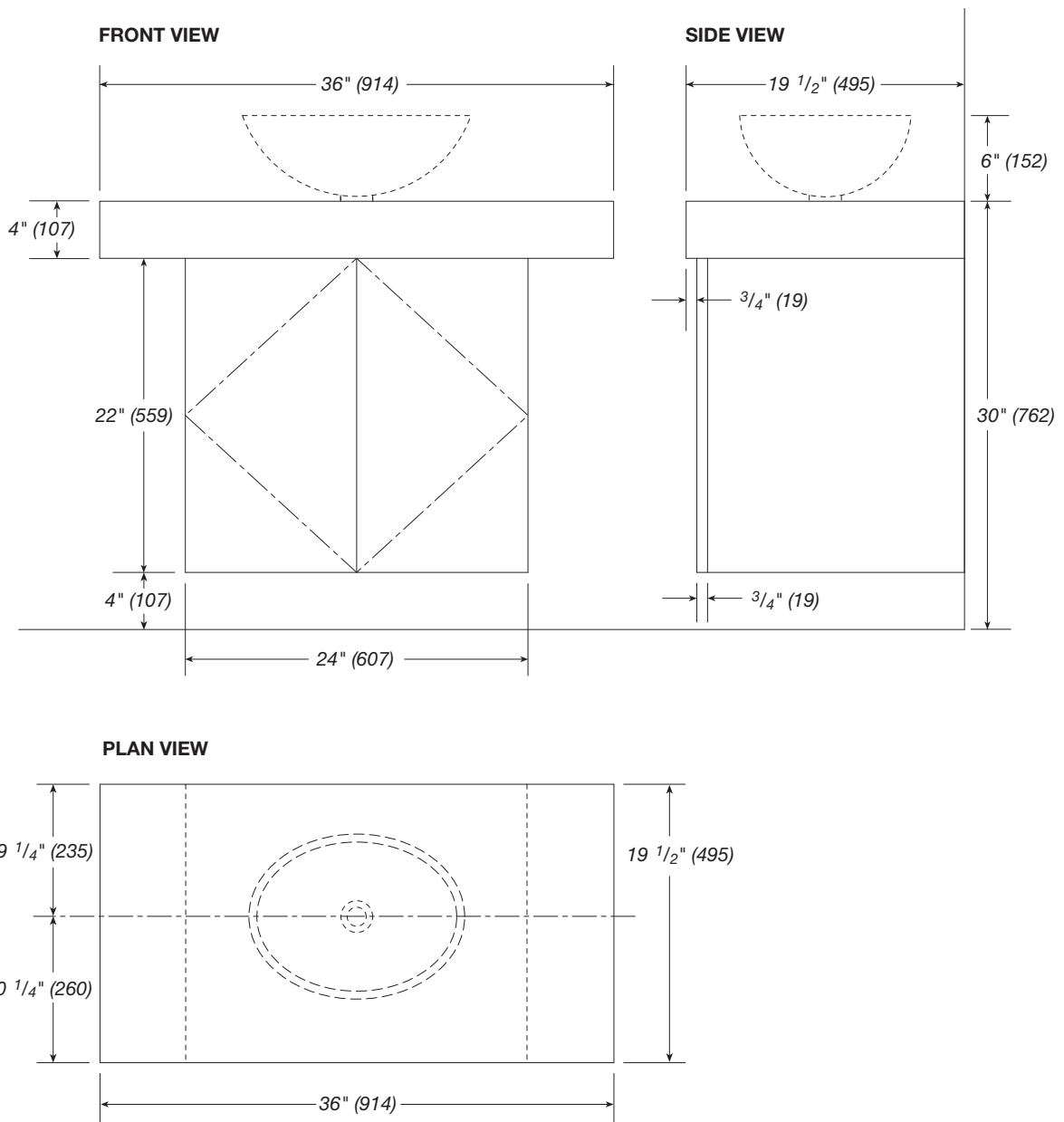
Wood cabinet only. Custom sizes and veneer choices by quotation.
 Order Vitraform Freestanding Basin separately. See pg 2.1.1
 Available in a variety of standard or custom veneers.
 Recommended with 6"-7" wall mount faucet spout.

Provided with touch latch door hardware. May be ordered drilled for cabinet pulls if required. Specify hole size and position on Order Form C.1.2.

NOTE: Sturdy blocking in wall required for mounting.
 No legs are required with this style.

Shown with:
 Oval Freestanding Basin 250 (see section 2.0)

Example	
Order No:	VF3 SY
	A
VF3	Vitraform T Vanity
SY	Sycamore veneer
Specify these items separately if required:	
1. Freestanding Basin (pg 2.1.1).	
2. Drain (pg B.1.1)	



3500 Blake St. Denver, CO 80205
 Tel 303.295.1010 800.338.5725 Fax 303.292.1161 www.vitraform.com



G.N. Vanity Item No. VF4

Wood cabinet only. Custom sizes and veneer choices by quotation.

May be used with:
 Round or Oval Vitraform Countersink (see pg 3.4.1 & 3.4.4)
 Countertop for Freestanding Basin (see 4.4.1 & 4.4.4)
 Round or Oval Freestanding Basin (see pg 2.1.1)

For Minimum and Maximum Counter and Cabinet heights refer to table at right, and pg B.6.3a for Installation of Two-part Leg with and without Overflow.

Glass may be attached at wall using Channel at Back or Flush Clips. Surface Clips are not recommended.

Counter and Cabinet Heights using Two-part Leg

Countersinks with Overflow	Finished Counter Height
18" Cabinet with Overflow	Min: 33 5/8" Max: 35 3/4"
20" Cabinet with Overflow	Min: 35 5/8" Max: 37 3/4"

Countersinks without Overflow

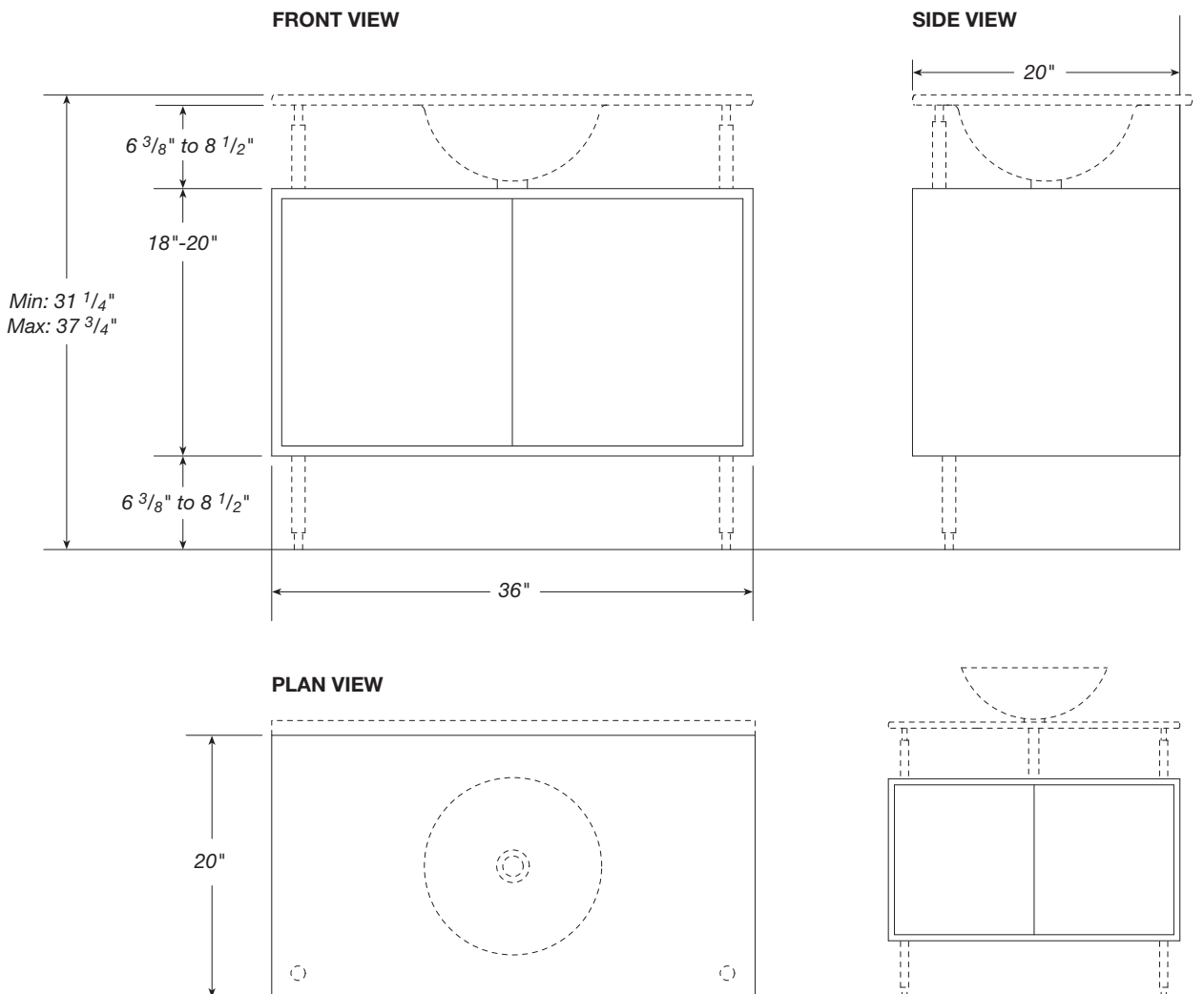
18" Cabinet without Overflow	Min: 31 1/2" Max: 35 3/4"
20" Cabinet without Overflow	Min: 33 1/2" Max: 37 3/4"

Freestanding Basin on Countertop

18" Cabinet (Overflow NA)	Min: 31 1/2" Max: 35 3/4"*
20" Cabinet (Overflow NA)	Min: 33 1/2" Max: 37 3/4"*

*Finished height of Countertop, add 6" to top of Basin.

Example	Specify these items separately if required:
Order No: VF4 SA VF4 Vitraform G.N. Vanity SA Sapele veneer	1. Countersink (see pg 3.4.1 or 3.4.4) or Countertop (36" price, pg 4.4.1 or 4.4.4) and Freestanding Basin (pg 2.1.1). 2. Drain (see pg B.1.1) 3. Hardware (see pg B.1.2 for choice of legs and pull) 4. Mirror (if required see pg C.4.3 & C.4.4)



Shown with Countertop and Freestanding Basin.

WASH STAND

A Specify Model For specification only.

Rectangular front Countersink for Wash Stand

See Section 3.0 for Countersink specifications.

Item	Description
310	Round Single Basin Wash Stand
312	Round Double Basin Wash Stand
360	Oval Single Basin Wash Stand
362	Oval Double Basin Wash Stand

B Specify Glass Color For specification only.

Item	Group 1	Item	Group 2	Item	Group 3
C	Clear	P	Peach	T	Cobalt*
S	Starphire	A	Azurlite	B	Blue
Z	Bronze	X	Solex	W	White*
G	Grey			L	Cristal
K	Black*			Q	Cristal Antq

*Consult factory for installation with other glass colors.
See pages C.2.3 and C.2.3a

C Specify Glass Finish For specification only.

Item	Description	Add'l Cost
P	Polished	NC
F	Frosted (cannot be glued)	NA
O	Translucent 20-36" 37-60"	\$290.00 \$350.00

Wash Stand shipped knocked down for assembly on site.
Countersink to be siliconed to panel legs.

D Overflow For specification only.

Item	Description
F	Overflow, Round or Oval
C	Overflow collar

Order overflow or collar separately on order form C.2.2
See pg B.1.4 for metal finish costs and codes.

NOTE: Flush Clips are included to support the Wash Stand shelf.
Metal finish will be matched to Overflow or Collar unless specified otherwise on Order Form under "Custom Options".

E Specify Width (* in 6" incremental price groups)

See Item B for Color Group List.
Minimum width 24", Maximum width 60"
Please write exact dimension in "Custom Options"
on Order Form for Item E if other than standard
6 in. increments.

Single Bowl Wash Stand

Price for complete unit with Countersink, Leg Panels, Shelf and Clips.

Item	Width	Group 1	Group 2	Group 3
24	24 in.	\$ 5920.00	\$ 6450.00	\$ 7505.00
30	30 in.	\$ 6220.00*	\$ 6800.00	\$ 7960.00
36	36 in.	\$ 6515.00	\$ 7155.00	\$ 8415.00
42	42 in.	\$ 6815.00	\$ 7505.00	\$ 8875.00
48	48 in.	\$ 7115.00	\$ 7855.00	\$ 9330.00
54	54 in.	\$ 7415.00	\$ 8210.00	\$ 9790.00
60	60 in.	\$ 7715.00	\$ 8565.00	\$ 10,245.00

*Quick Ship 30 in. Clear, Starphire or Black \$ 5000.00, no holes.

Double Bowl Wash Stand

48	48 in.	\$ 8295.00	\$ 9035.00	\$ 10,505.00
54	54 in.	\$ 8590.00	\$ 9385.00	\$ 10,965.00
60	60 in.	\$ 8890.00	\$ 9735.00	\$ 11,425.00

F Installation Type For specification only.

Item	Description
B	Flush to wall

No Hardware required. Attach to wall with silicone.

G Faucet Projection in inches (rounded), for coordination only.

Item	Description
6	6" wall mount
8	8" wall mount
9	9" wall mount
X	*Custom (other than above, or any deck mount faucet)

*All other faucet specs for wall mount spout projection or any deck mount faucets. Provide dimensions in Custom options of Order Form.

H Standard or Custom

Item	Description	Add'l Cost
S	Standard Models Wall mount faucet, no custom options	NA
C	Custom Options * Holes for faucets or other, each Height other than 34"	\$ 75.00 \$ NC

* Attach manufacturer's spec for deck or wall faucet.

Example	Specify these items separately if required:
Order No: 310 W P C 48 B X C	1. Overflow or Collar (pg B.1.4)
310 Round Single Basin Wash Stand	2. Drain (see pg B.1.1)
W White glass	3. Mirror (see pgs C.4.1)
P Polished finish	
C Overflow Collar	
48 Width of Counter in inches (rounded up to 6" increment for price)	
B Flush to wall	
X Custom: single hole deck faucet (attach specifications)	
C Upcharge for deck mount faucet hole	

www.vitraform.com 800.338.5725 Fax 303.292.1161

Tel 303.295.1010

3500 Blake St. Denver, CO 80205

VITRAFORM™

WASH STAND

P.O. No: _____ Date: _____ Sales Person: _____ Tel: _____ Ext: _____

www.vitraform.com Fax 303.292.1161 800.338.5725 3500 Blake St. Denver, CO 80205 Tel 303.295.1010

3500 Blake St. Denver, CO 80205

VITRAFORM™

Wash Stand Order	Quantity: _____ Please use additional Order Forms for non-identical orders.							
	Order No:	_____	_____	_____	_____	_____	B	_____
	Price:	\$	_____	_____	_____	_____	_____	TOTAL \$ _____

Overflow	Required, please choose one. See Hardware Section pg B.1.4	Qty.	Item / Fin. #	Price	Faucet Specifications	Custom Faucet Specification Deck mount faucet <input type="checkbox"/> Single Hole* <input type="checkbox"/> Wide spread* <input type="checkbox"/> Position in straight line <input type="checkbox"/> Follow line of bowl <input type="checkbox"/> Center to Center (specify dimension): _____
Drain Sets	See Hardware pg B.1.1 <input type="checkbox"/> Grid Set US/Euro <input type="checkbox"/> ADA Grid Set US/Euro <input type="checkbox"/> Pivot Drain Set US/Euro <input type="checkbox"/> Lever Pop-up Set US/Euro <input type="checkbox"/> Remote Pop-up Set US/Euro <input type="checkbox"/> Dome Open Set US/Euro <input type="checkbox"/> Dome Pop-up Set US/Euro					*For Deck mount faucets attach manufacturer's specifications for spout projection, escutcheon size and hole size(s). Wall mount faucet <input type="checkbox"/> Wall spout projection (specify dimension): _____
						Custom Options Size Specification Enter Wash Stand dimensions Width: _____ Depth: _____ Height (if other than standard 34"): _____ Metal Finish for Shelf Clips (if different than Overflow/Collar) Specify Finish: _____

Notes

Net Crating Charge 20-42" width: \$100.00 43-60" width: \$150.00 61-84" width: \$200.00

Shipping Information	Ship Via: <input type="checkbox"/> Best Way or <input type="checkbox"/> Specify Truck Line: _____			
	Bill to:			
	Company Name		Contact	
	Address	City	State	Zip
	Phone	Fax	Email	
	Ship to:			
	Name			
	Shipping Address	City	State	Zip
	Phone	Contact		
	More Info: Ship Partials: <input type="checkbox"/> YES <input type="checkbox"/> NO _____			

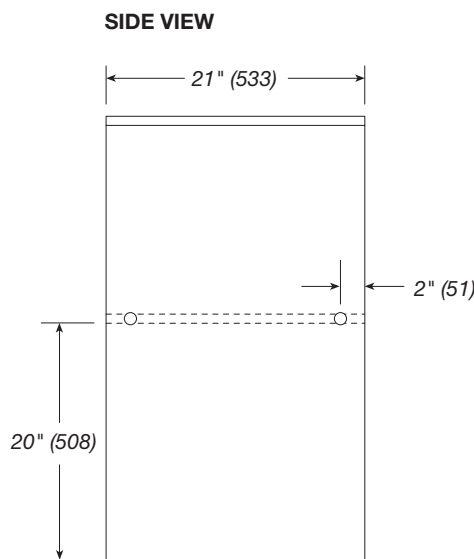
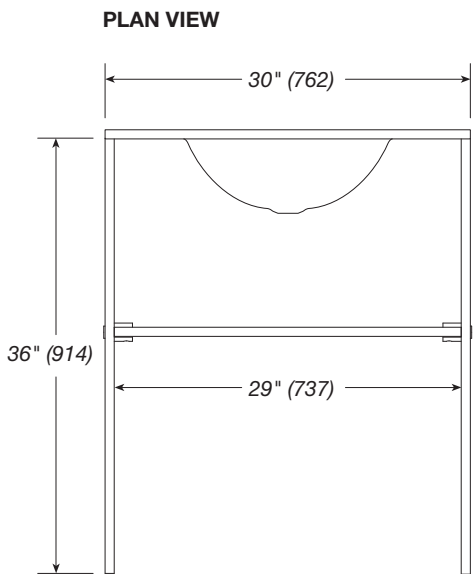
Wash Stand

Round Single Basin Wash Stand (see page 3.4.1) Item 310
 Round Double Basin Wash Stand (see page 3.4.2) Item 312

Oval Single Basin Wash Stand (see page 3.4.4) Item 360
 Oval Double Basin Wash Stand (see page 3.4.5) Item 362

Offered in standard Countersink sizes up to 60" width with one or two basins.

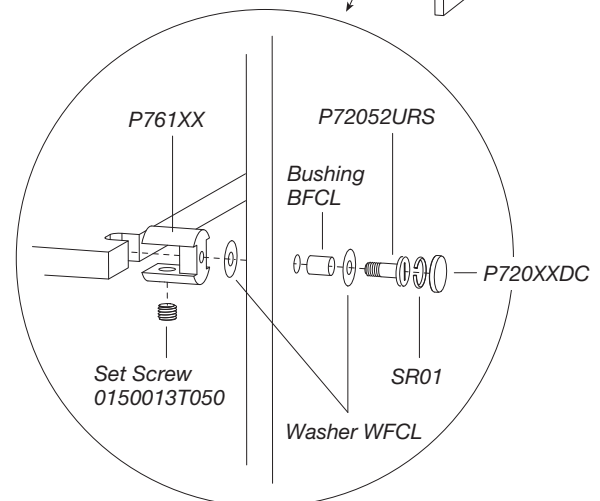
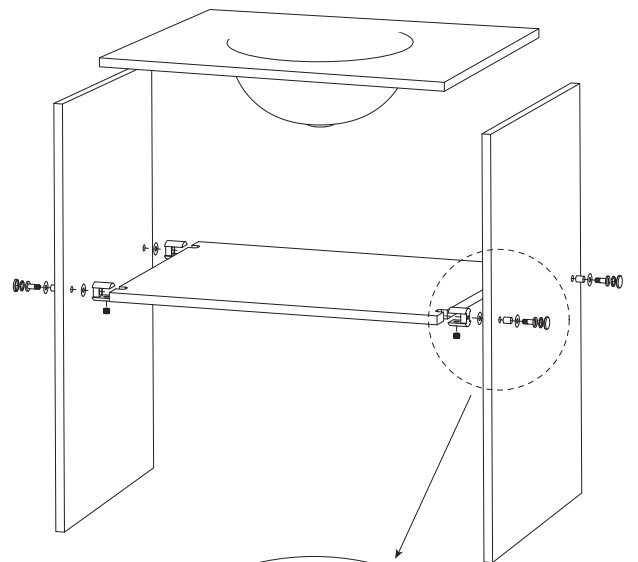
Wash stand shipped knocked down. Countersink is attached to panel leg on site with clear silicone adhesive. This attachment cannot be done with glass that has been frosted. Offered in Black, White or Cobalt, polished glass only. Other colors in polished finish should be assembled on site by a glass installer experienced with optically clear adhesives.



Example	
Order No:	310 W P C 48 B X C
	A B C D E F G H
310	Round Single Basin Wash Stand
W	White glass
P	Polished finish
C	Overflow Collar
48	Counter Width in inches (rounded up, in 6" increments)
B	Flush to wall
X	Custom: single hole deck faucet (specs attached)
C	Upcharge for deck mount faucet hole

Specify these items separately if required:

- 1. Overflow or Collar** (pg B.1.4)
- 2. Drain** (see pg B.1.1)
- 3. Mirror** (see pgs C.4.3 & C.4.4)



Wash Stand Installation Instructions

Please provide these instructions to contractor at point of sale.

CAUTION: This product is made of glass. It is very strong, but sensitive to hard object impact, extreme change in temperature and high mechanical stress. Most damage to this product occurs during installation. Please follow installation instructions carefully. VITRAFORM products are intended and Warranted for Lavatory use only.

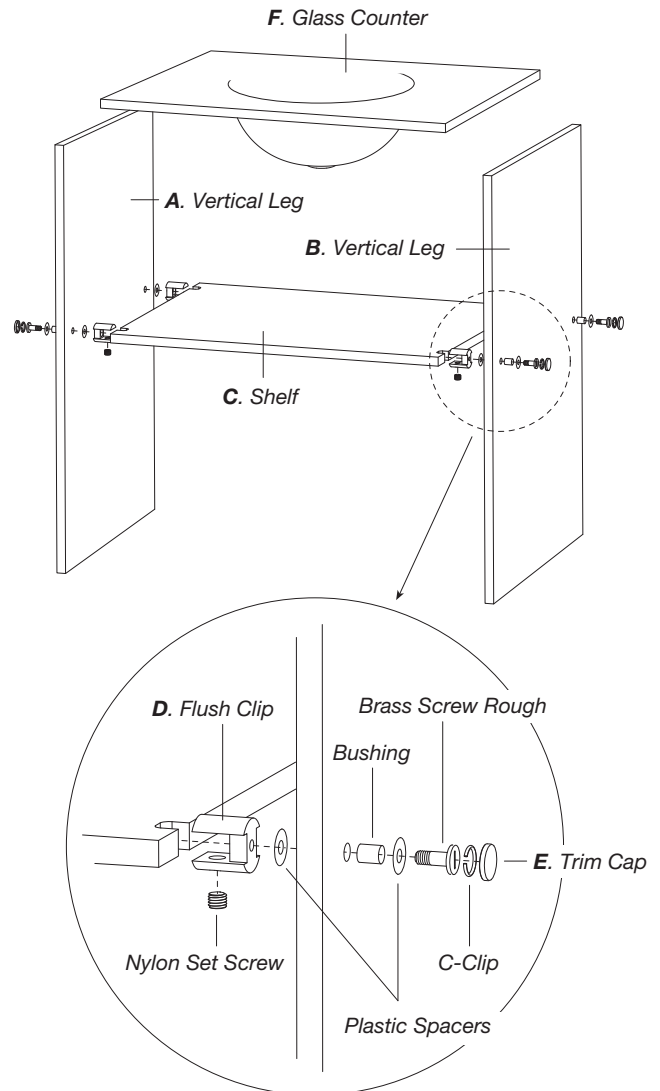
IMPORTANT NOTE: This is a difficult installation and should be performed by TWO EXPERIENCED GLASS INSTALLERS.

The use of Clear Silicone Adhesive is recommended for attaching the Counter to the legs of this product, and the finished assembly to the wall and floor. The Vitraform Washstand is offered in Black, Cobalt and White glass, all which may be assembled with Silicone adhesive. If any other color of Vitraform Glass is ordered, it must be assembled on site with optically clear adhesive by an experienced Glass Installer, or the attachment will be unsightly. In all cases, the glass must have a polished finish as frosted glass may not be assembled with any adhesive.

Before installation lay out and identify all components. Due to the custom nature of this product the hardware may be preassembled at the factory. Locate an area to assemble that is at or near the actual installation location. Lay out a soft material such as an old piece of carpet on which to work. This will prevent contact of glass to hard floor materials.

1. Assemble (2) Vertical Legs and Shelf as follows: Identify Vertical Leg Sections **A** and **B**. Reference shop drawing provided to verify top and bottom of leg. If hardware is not preassembled assemble Flush Clip **D** and Brass Screw Rough using appropriate plastic spacers as indicated with Nylon Locking Set Screw in the down facing position. While one person holds Vertical Leg **A** upright the other person carefully slides Shelf **C** into Flush Clips **D** and tightens Nylon Set Screws. Repeat process with Vertical Leg **B**. This "BASE" assembly is relatively stable at this point and can be carefully moved by two people as a unit while lifting from the point where the vertical and horizontal parts meet.
2. Verify clearance of the supply and waste lines relative to the Washstand. Position "BASE" assembly against the wall. Using a square, check to be sure legs are square to shelf. Gently lift base to adjust legs if necessary. Place Glass Counter **F** on legs to verify that counter edges line up with legs and adjust base if necessary. Remove the Counter. **WARNING:** Be extremely careful moving legs and Counter and touching glass to glass to avoid chipping.
3. Shim legs at floor if necessary to level "BASE" assembly.
4. Apply a small bead of Clear Silicone along the top of each Leg and replace Glass Counter. Temporarily tape Counter to legs and legs to wall using duct or masking tape.
5. Secure "BASE" assembly by caulking the joint of the glass at the wall and floor with Clear Silicone Adhesive. Caulk only inside the assembly where it is less visible.

6. Clean up excess silicone before it sets. Let Silicone set for 24 hours before installing plumbing or removing tape.
7. After removal of tape carefully clean up dried Silicone using a NEW single edged razor blade. If not performed carefully this process can SCRATCH THE GLASS.
8. Install drain or faucet hardware as directed by instructions supplied by manufacturer. **CAUTION:** Over-tightening the faucet or drain fittings will crack the glass.
9. Snap Trim Caps **E** onto Brass Screw Roughs.
10. Clean Washstand with soft cloth and glass cleaner. Clean metal fittings as instructed by manufacturer.



Care for the Vitraform Glass Sink: Use commercial glass cleaners sprayed onto a soft cloth to clean glass surface(s). Wipe basin dry after use to avoid mineral deposits on glass left by water spots. For frosted glass, special attention to stubborn stains or adhesives may be required. Silicone or other adhesives may be impossible to remove from frosted finishes. If contamination occurs attempt to remove adhesive with glass cleaner first, then denatured alcohol, paint thinner or mineral spirits. If none of these solvents work, the stain might be removed by re-blasting the bowl. Contact the factory for authorization to return the product for evaluation. A return authorization must accompany the product. Please pack the sink in the original box or other proper packing to assure its safe return and insure for full value.

Care for metal fittings and plated finishes: Wipe metal fittings dry after use to avoid water spots. Glass cleaner used on the Vitraform Glass Sink may be damaging to metal finishes. Use a diluted, neutral, liquid soap and a soft cloth to clean metal fittings. Never use an abrasive cloth or scouring pad.

GLASS ROD PEDESTAL

A Specify Model

Pedestal does not include Basin, Countertop or Hardware to attach Countertop to wall.
 See pg 2.1.1 for Freestanding Basin prices.
 See pg 4.5.7 for Countertop prices.
 See pg B.1.3 for Mounting Hardware prices.

Item	Description	Retail Price
720	Pedestal without Towel bar	\$ 1400.00
721	Pedestal with Towel bar	\$ 1700.00

B Specify Leg / Towel Bar Material

For specification only of Leg and Towel Bar material.

Item	Description	Retail Price
Glass Legs		
LP	Cristal Polished glass	NC

C Specify Pedestal Hardware Finish

Including metal Base, Leg and Towel Bar fittings.

Item	Description	Additional Cost
10	Polished Chrome	NC
12	Polished Nickel	NC
20	Satin Chrome	NC
22	Satin Nickel	NC
24	Vola Satin Chrome	NC
14	Polished Copper	\$ 240.00
15	Oil Rubbed Bronze	\$ 240.00
16	PVD Brass	\$ 240.00
17	Uncoated Polished Brass	\$ 240.00
21	Satin Brass	\$ 240.00
13	Polished Gold	\$ 360.00
23	Satin Gold	\$ 360.00
99	Custom	call for price

Example	Specify these items separately if required:						
Order No: 720 LP 20 <div style="display: flex; justify-content: space-around; margin: 5px 0;"> A B C </div> <table border="0"> <tr> <td>720</td> <td>Pedestal without Towel bar</td> </tr> <tr> <td>LP</td> <td>Cristal Polished glass legs</td> </tr> <tr> <td>20</td> <td>Satin Chrome</td> </tr> </table>	720	Pedestal without Towel bar	LP	Cristal Polished glass legs	20	Satin Chrome	1. Vitraform Freestanding Basin (see pg 2.1.1) 2. Countertop (see pg 4.5.7) 3. Drain (see pg B.1.1) 4. Mirror (see pgs C.4.3 & C.4.4) 5. Surface Clip (see pg B.1.3)
720	Pedestal without Towel bar						
LP	Cristal Polished glass legs						
20	Satin Chrome						

Tel 303.295.1010 Fax 303.292.1161 www.vitraform.com

800.338.5725 3500 Blake St. Denver, CO 80205

VITRAFORM™

PEDESTAL

P.O. No: _____ Date: _____ Sales Person: _____ Tel: _____ Ext: _____

Pedestal Order	Quantity: _____ Please use additional Order Forms for non-identical orders.			
	Order No:	_____	_____	_____
		A	B	C
	Price: \$	_____	_____	TOTAL \$ _____

Drains: Order Drain Sets with Freestanding Basin on Order Form 2.2.1

Counter Top: Order Counter Top and Mounting Hardware on Order Form 4.2.1

Notes

Net Crating Charge	<input type="checkbox"/> Net Crating Charge Per Pedestal including Countertop \$150.00
---------------------------	--

Shipping Information	Ship Via: <input type="checkbox"/> Best Way or <input type="checkbox"/> Specify Truck Line: _____			
	Bill to:			
	Company Name		Contact	
	Address	City	State	Zip
	Phone	Fax	Email	
	Ship to:			
	Name			
	Shipping Address	City	State	Zip
	Phone	Contact		
	More Info: Ship Partials: <input type="checkbox"/> YES <input type="checkbox"/> NO			
	Date required	Mark boxes	Other	

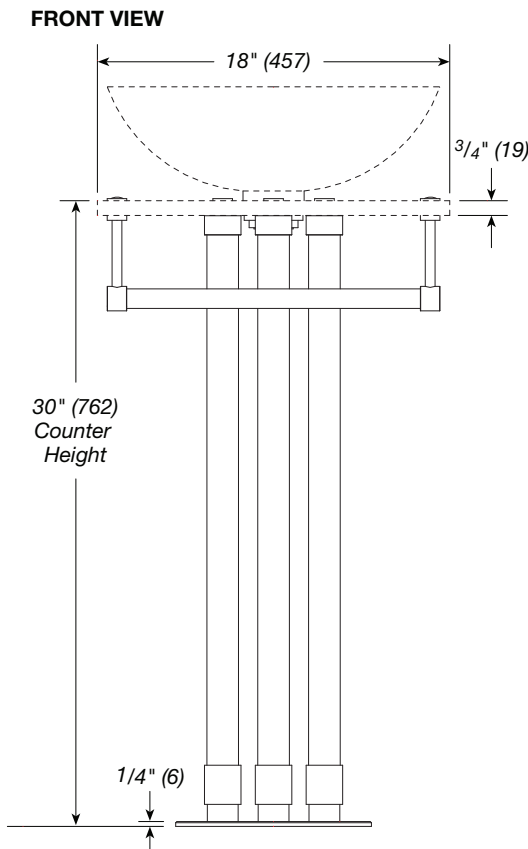
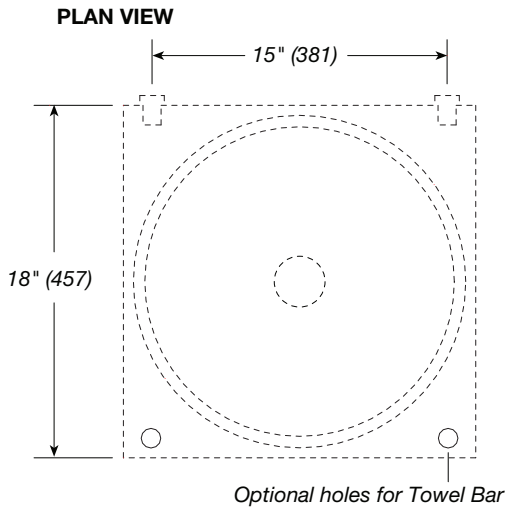
Tel 303.295.1010 800.338.5725 Fax 303.292.1161 www.vitraform.com

3500 Blake St. Denver, CO 80205

VITRAFORM™

Glass Rod Pedestal

Pedestal without Towel Bar Item 720.XX
 Pedestal with Towel Bar Item 721.XX

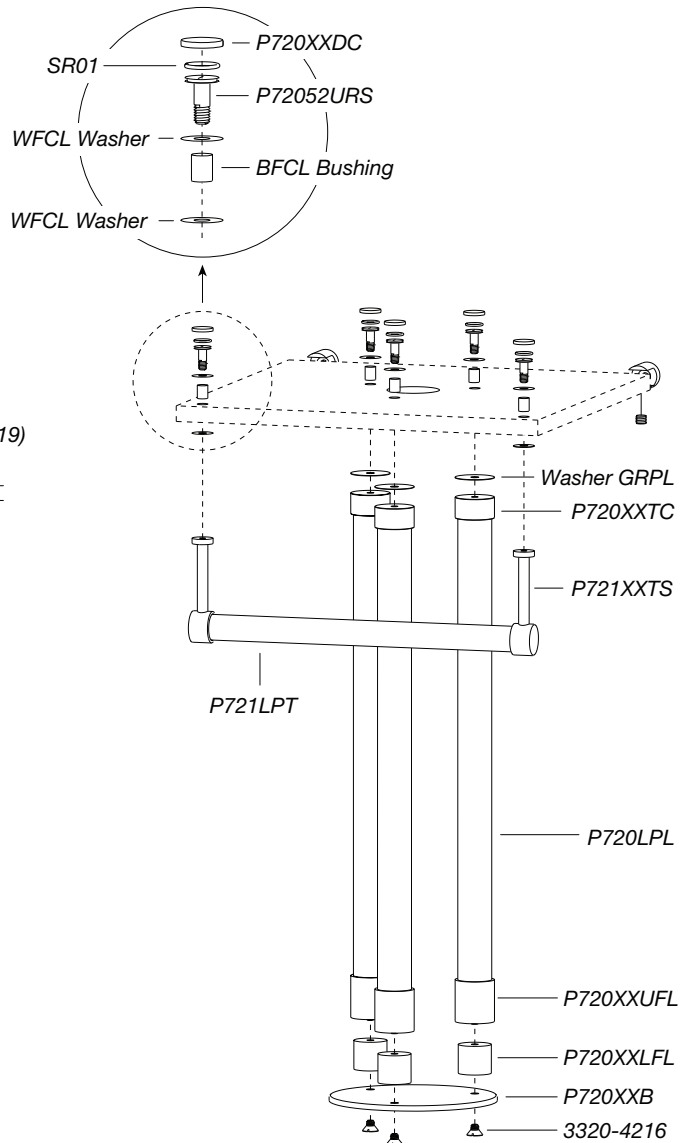


NOTES:

For wall mount faucets only, specify spout projection.
 Specification for Pedestal only. Does not include Basin, Drain Set, Countertop or support at wall. See pg 2.1.1 for basins. See pg 4.5.7 for Countertop. See pg B.1.3 for choice of Surface Clips, Flush Clips or U-Channel, all to be ordered separately.

Order Drain Set separately.

Shown with Surface Clips for attachment to back wall and Freestanding Basin Item No. 210.



Tel 303.295.1010 800.338.5725 Fax 303.292.1161 www.vitraform.com
 3500 Blake St. Denver, CO 80205
VITRAFORM™

Example	Specify these individual items for finished pedestal installation:
Order No: 720 LP 20 A B C 720 Pedestal only LP Cristal Polished Glass Leg 20 Satin Chrome	<ol style="list-style-type: none"> Vitraform Freestanding Basin (see pg 2.1.1) Countertop (see pg 4.5.7) Drain (see pg B.1.1) Mirror (see pgs C.4.3 & C.4.4) Surface Clip (see pg B.1.3)

Pedestal Installation Instructions

Please provide these instructions to contractor at point of sale.

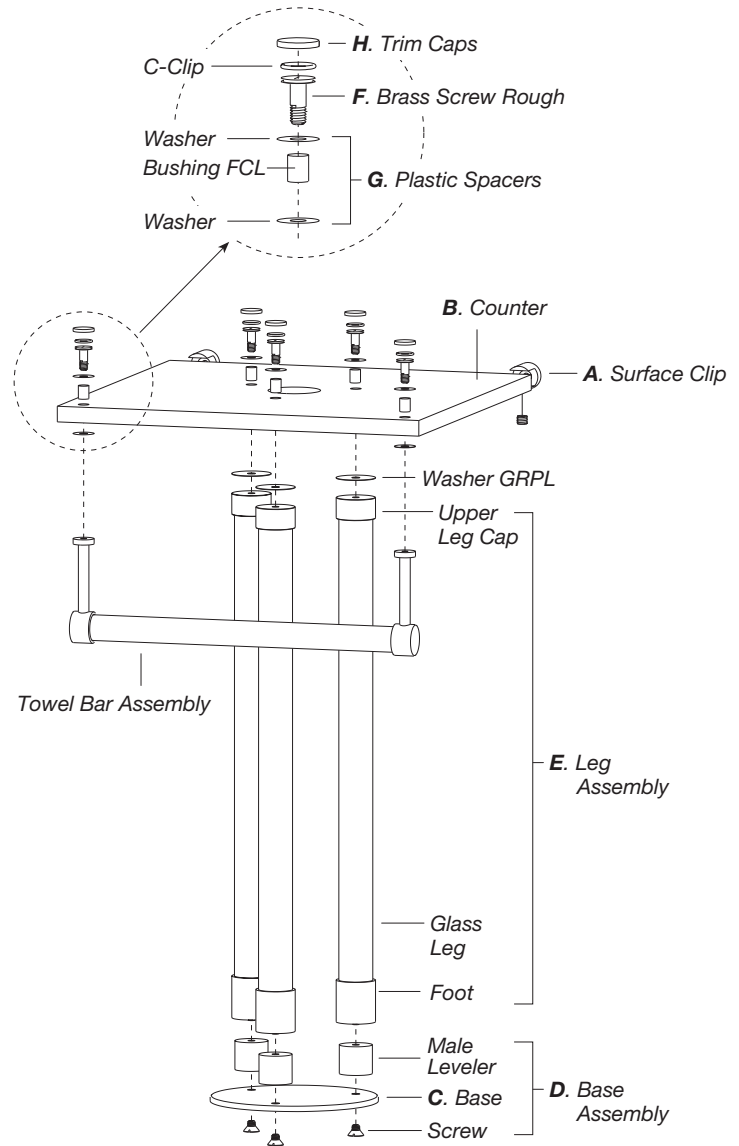
1. Surface Clip installation: Mark and drill (2) holes on wall for **Surface Clips A**. The center of these holes should be located 1" in from the left and right sides of the **Counter B**; if the Counter is 18" wide then the clips should be 16" from center to center and are centered 29 5/8" above the finished floor. Install **Surface Clips A** using appropriate hardware for wall surface. This will set the COUNTER TOP HEIGHT at 30".

2. Base location and installation: The **Base C** will be attached to the floor using Clear Silicone Adhesive. It is important to establish the correct location and orientation of the Base prior to gluing it to the floor (working time for Clear Silicone can be as little as 30 minutes). Place a small dab of clear silicone roughly in the center of the bottom of the Base. Place **Base Assembly D** (shipped assembled) on floor on its approximate final location. Rotate the **Base Assembly D** to position the legs as shown **Plan View Drawing**. Screw **Leg Assemblies E** onto **Base Assembly D**. Adjust **Leg Assemblies E** so that their tops are 29 1/4" above the floor. BE CAREFUL NOT TO APPLY PRESSURE SIDEWAYS TO GLASS LEG ASSEMBLIES PRIOR TO TOP ATTACHMENT.

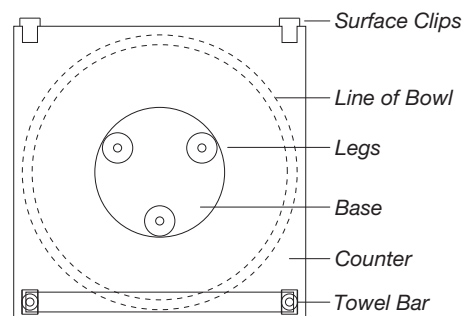
3. Glass Counter attachment: Lower **Glass Counter B** on to **Leg Assemblies E**. Attach Counter to Leg Assemblies using **Brass Screw Roughs F** and **Plastic Spacers G** and at the same time checking, leveling and straightening the legs. Leave the screws a little loose so that the legs can be finely adjusted later. Slide Glass Counter and base into wall mounted Surface Clips making sure to move the entire Base Assembly carefully. This is an awkward process and requires patience and precision to get all components aligned and tightened. Once all components are positioned correctly tighten all the hardware so everything is secure. Snap **Trim Caps H** onto **Brass Screw Roughs F**. Clean up any excess silicone that has pushed from under the base. Trim Caps can be removed by carefully prying them off with a miniature, flat screwdriver.

4. Attach Towel Bar Assembly similarly to attachment of legs in Procedure #3 above.

5. Install Freestanding Sink and Drain Assembly as described in instructions supplied with those items.



PLAN VIEW



Care for the Vitraform Glass Sink: Use commercial glass cleaners sprayed onto a soft cloth to clean glass surface(s). Wipe basin dry after use to avoid mineral deposits on glass left by water spots. For frosted glass, special attention to stubborn stains or adhesives may be required. Silicone or other adhesives may be impossible to remove from frosted finishes. If contamination occurs attempt to remove adhesive with glass cleaner first, then denatured alcohol, paint thinner or mineral spirits. If none of these solvents work, the stain might be removed by re-blasting the bowl. Contact the factory for authorization to return the product for evaluation. A return authorization must accompany the product. Please pack the sink in the original box or other proper packing to assure its safe return and insure for full value.

Care for metal fittings and plated finishes: Wipe metal fittings dry after use to avoid water spots. Glass cleaner used on the Vitraform Glass Sink may be damaging to metal finishes. Use a diluted, neutral, liquid soap and a soft cloth to clean metal fittings. Never use an abrasive cloth or scouring pad.

WALL MIRROR

A Specify Model

Standard sizes shown in Item D below.
For Mirror Specifications, see pgs C.4.3 & C.4.4

Item	Description	Retail Price
M100	Round Wall Mirror (4 mirror clips)	\$ 675.00
M150	Oval Wall Mirror (4 mirror clips)	\$ 675.00
M175	Square Wall Mirror	\$ 900.00
M175	Rectangular Wall Mirror	\$ 900.00

Custom size or shape Request Quote

All Vitraform glass colors available for back layer, no up-charge.
Mirror includes mounting hardware. Engraved designs by quotation.

B Specify Glass Color

Item	Group 1	Item	Group 2	Item	Group 3
C	Clear	P	Peach	T	Cobalt
S	Starphire	A	Azurlite	B	Blue
Z	Bronze	X	Solex	W	White
G	Grey			L	Cristal
K	Black			Q	Cristal Antq

C Specify Glass Finish

Item	Description	Retail Price
P	Polished	NA
F	Frosted	NA

D Specify Mirror Size

Please write mirror dimensions on Order Form for Item D (w x h) for oval or rectangle
Custom sizes available upon quotation

Description	Standard Dimensions
Round Wall Mirror	24"
Oval Wall Mirror	22" x 28"
Square Wall Mirror	24" x 24"
Rectangular Wall Mirror	36" x 24"

E Specify Mirror Hardware Finish

Item	Description	Additional Cost
10	Polished Chrome	NC
12	Polished Nickel	\$ 50.00
20	Satin Chrome	\$ 50.00
22	Satin Nickel	\$ 50.00
24	Vola Satin Chrome	\$ 50.00
14	Polished Copper	\$ 50.00
15	Oil Rubbed Bronze	\$ 50.00
16	PVD Brass	\$ 50.00
17	Uncoated Polished Brass	\$ 50.00
21	Satin Brass	\$ 50.00
13	Polished Gold	\$ 75.00
23	Satin Gold	\$ 75.00
99	Custom	call for price

Example	
Order No:	M175 W P 3624 10
	A B C D E
M175	Rectangular Wall Mirror
W	White glass
P	Polished finish
3624	Dimensions of finished Mirror 36" width x 24" height
10	Polished Chrome

WALL MIRROR

P.O. No: _____ Date: _____ Sales Person: _____ Tel: _____ Ext: _____

Mirror Order

Quantity: _____ Please use additional Order Forms for non-identical orders.

Order No: _____

A

B

C

D

E

Price: \$ _____ NA NA NA _____ TOTAL \$ _____

Notes

Net Box Charge

\$50.00 NOTE: Shipped via Truck Line only. Request Quote for freight charges.

Shipping Information

Ship Via: Best Way or Specify Truck Line: _____

Bill to:

Company Name _____ Contact _____

Address _____ City _____ State _____ Zip _____

Phone _____ Fax _____ Email _____

Ship to:

Name _____

Shipping Address _____ City _____ State _____ Zip _____

Phone _____ Contact _____

More Info: Ship Partials: YES NO _____ Date required _____ Mark boxes _____ Other _____

Round or Oval Mirror

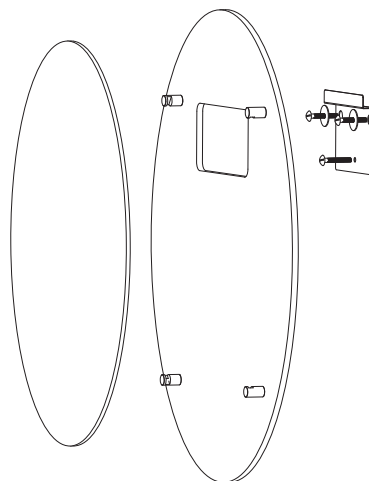
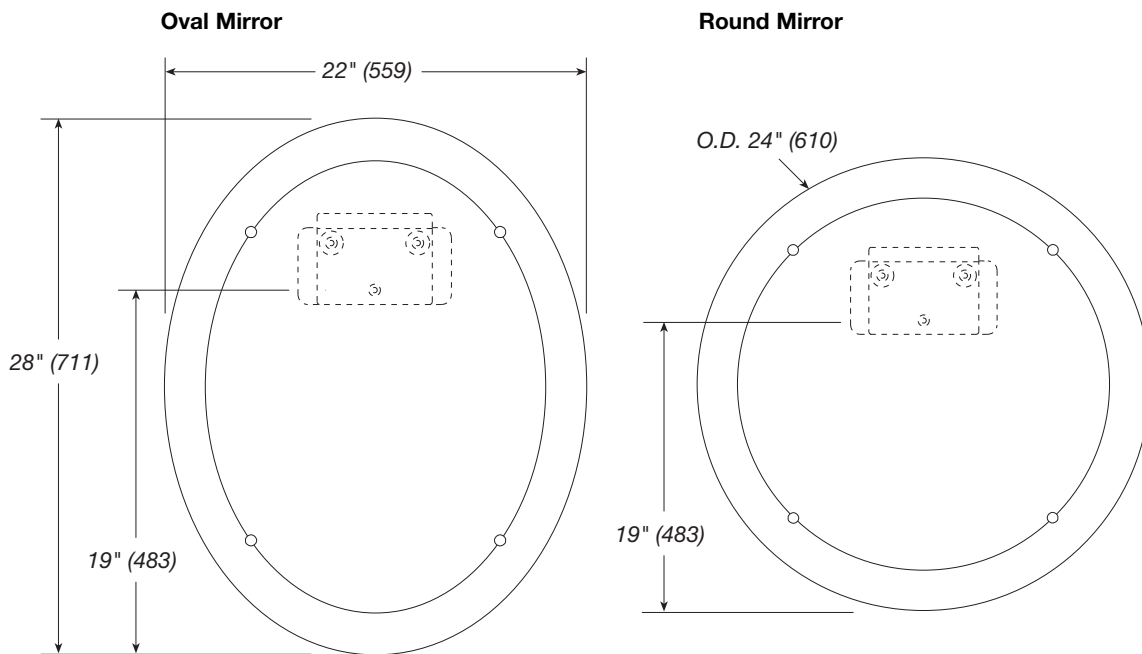
Round Mirror Item No. M100
Oval Mirror Item No. M150

NOTES:

1/4" clear mirror front with single layer of any Vitraform glass color back. Frosted finish not required on Black, White or Cobalt. Polished finish on back may not show well against certain wall colors.

STANDARD SIZES:

Round 24"
 Oval 22" x 28"
 Request quotation for custom sizes.



NOTE: Provide blocking behind wall for sturdy installation.

Tel 303.295.1010 800.338.5725 Fax 303.292.1161 www.vitraform.com

3500 Blake St. Denver, CO 80205

VITRAFORM™

Square or Rectangular Mirror Item No. M175

NOTES:

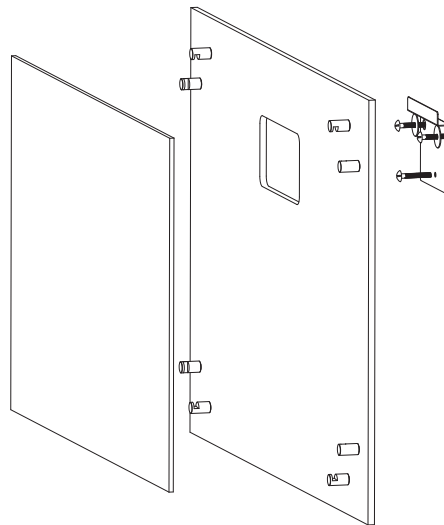
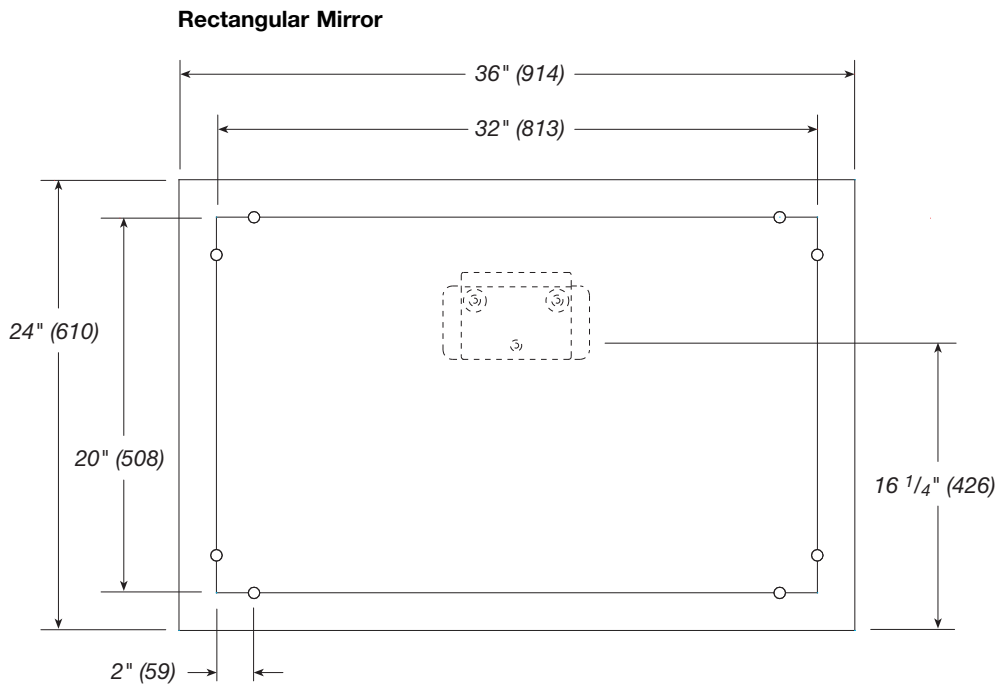
1/4" clear mirror front with single layer of any Vitraform glass color back. Frosted finish not required on Black, White or Cobalt. Polished finish on back may not show well against certain wall colors.

STANDARD SIZES:

Square 24" x 24"

Rectangular 24" x 36"

Request quotation for custom sizes.



NOTE: Provide blocking behind wall for sturdy installation.

Mirror Installation Instructions

Please provide these instructions to contractor at point of sale.

Our glass products are very strong, but are sensitive to hard object impact, extreme changes in temperature and high mechanical stress. Most damage to this product occurs during installation due to improper handling or over tightening of the hardware.

Handling

Glass is best handled and transported in a vertical orientation which also applies to carrying the product while installing. While installing, care should be taken to evenly support the glass to avoid over stressing it. This glass is most vulnerable at its edge and at holes and cut-outs so try to lay flat during assembly on a clean soft material such as carpet or foam rubber.

Protective Plastic Film

The product is shipped from the factory with a temporary protective plastic film on all surfaces. It is best to leave this protective film on the glass, peeling back only enough area for installation, and only removing it when the bathroom is finally ready to be used. This plastic is intended to prevent light abrasions during shipping but will not protect against severe abrasions that can occur on a construction site. It is the responsibility of the installer to add additional protection if necessary. It is our recommendation that due to the fragility of our product that it be the last component in the bathroom to be installed.

Assembly

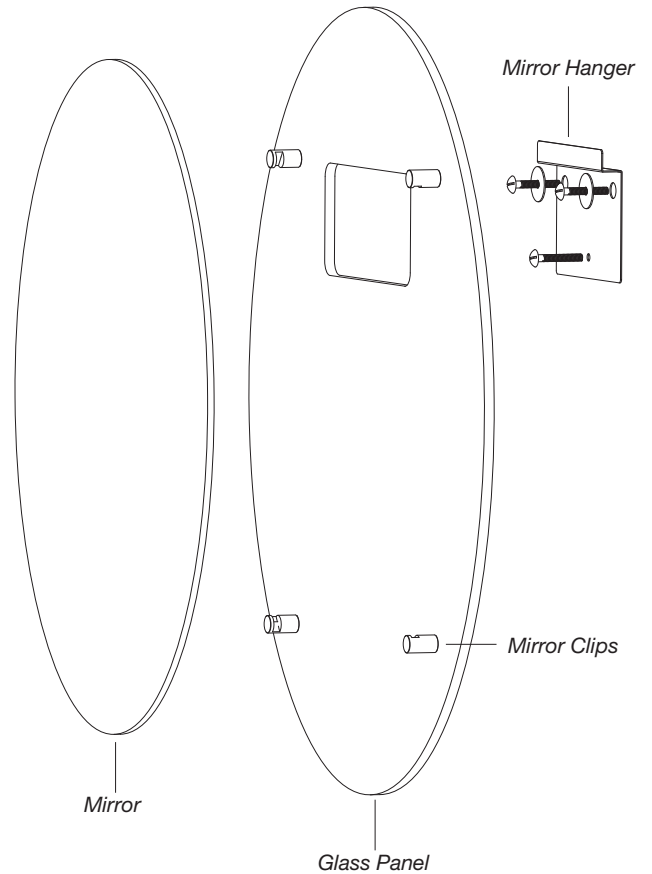
Loosely attach MIRROR CLIPS with appropriate hardware to glass panel, but leave one clip off so that mirror can be slid into clips. Once mirror is in place, attach last clip to backing glass to secure mirror. Carefully and evenly tighten clip screws to complete the assembly.

Hanger Attachment

Locate hanger placement by measuring cut-out on back glass relative to final position. While holding hanger in place, mark (3) hole placements on wall. The center attachment hole is intended to be used as a swivel while the two outer larger holes will allow about 5 degrees of rotation with #14 screws. Attach and level hanger to wall using appropriate hardware for wall surface. Hang mirror assembly in final position by carefully placing cut-out on back glass up and over hanger.

Cleaning

We recommend the use of common ammonia or alcohol based glass cleaners such as Windex applied with a clean soft cotton rag. Never use abrasive cleansers or paper towel which will scratch the surface of the glass.



COPPA PEDESTAL

A Specify Model

Pedestal does not include Basin, Countertop or Hardware to attach Countertop to wall.
 See pg 2.1.1 for Freestanding Basin prices.
 See pg 4.5.8 for Countertop prices.
 See pg B.1.3 for Mounting Hardware prices.

Item	Description	Retail Price
722	Pedestal	\$ 6000.00

B Specify Glass Color

Item	Description	Retail Price
LP	Cristal Polished glass	NC
	Other colors by quotation	

C Specify Base Cap Hardware Finish

Item	Description	Additional Cost
10	Polished Chrome	NC
12	Polished Nickel	NC
20	Satin Chrome	NC
22	Satin Nickel	NC
24	Vola Satin Chrome	NC
14	Polished Copper	\$ 40.00
15	Oil Rubbed Bronze	\$ 40.00
16	PVD Brass	\$ 40.00
17	Uncoated Polished Brass	\$ 40.00
21	Satin Brass	\$ 40.00
13	Polished Gold	\$ 55.00
23	Satin Gold	\$ 55.00
99	Custom	call for price

Example	Specify these items separately if required:
Order No: 722 LP 12 <div style="display: flex; justify-content: space-around; margin: 5px 0;"> A B C </div> 722 Pedestal Base only LP Cristal Polished glass 12 Polished Nickel	1. Vitraform Freestanding Basin (see pg 2.1.1) 2. Countertop (see pg 4.5.8) 3. Surface Clip (see pg B.1.3) 4. Drain (see pg B.1.1) 5. Mirror (see pgs C.4.3 & C.4.4)

Tel 303.295.1010 Fax 303.292.1161 www.vitraform.com 800.338.5725

3500 Blake St. Denver, CO 80205

VITRAFORM™

COPPA PEDESTAL

P.O. No: _____ Date: _____ Sales Person: _____ Tel: _____ Ext: _____

Coppa Order

Quantity: _____ Please use additional Order Forms for non-identical orders.

Order No: _____

A

B

C

Price: \$ _____ TOTAL \$ _____

Drains: Order Drain Sets with Freestanding Basin on Order Form 2.2.1

Counter Top: Order Counter Top and Mounting Hardware on Order Form 4.2.1

Notes

Net Crating Charge

Net Crating Charge Per Pedestal including Countertop \$150.00

Shipping Information

Ship Via: Best Way or Specify Truck Line: _____

Bill to:

Company Name _____ Contact _____

Address _____ City _____ State _____ Zip _____

Phone _____ Fax _____ Email _____

Ship to:

Name _____

Shipping Address _____ City _____ State _____ Zip _____

Phone _____ Contact _____

More Info: Ship Partials: YES NO Date required _____ Mark boxes _____ Other _____

Tel 303.295.1010 800.338.5725 Fax 303.292.1161 www.vitraform.com

3500 Blake St. Denver, CO 80205

VITRAFORM™

Coppa Pedestal

Coppa Pedestal

Item 722.XX

NOTES:

For use with Vitraform Freestanding Basins only.

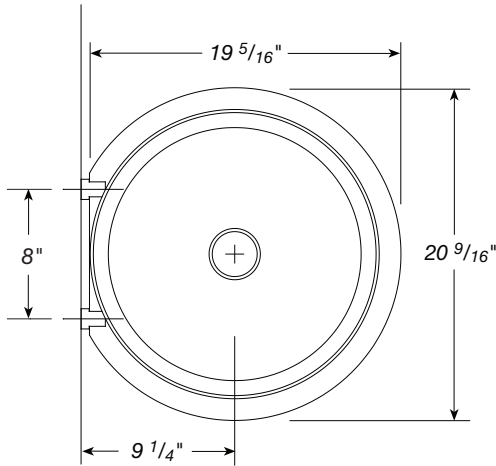
For wall mount faucets only, specify spout projection.

Specification for Base only. Does not include Basin, Drain Set, Countertop or support at wall. See pg 2.1.1 for basins. See pg 4.5.8 for Countertop. See pg B.1.3 for choice of Surface Clips or Flush Clips and pg B.1.1 for Drains, all to be ordered separately.

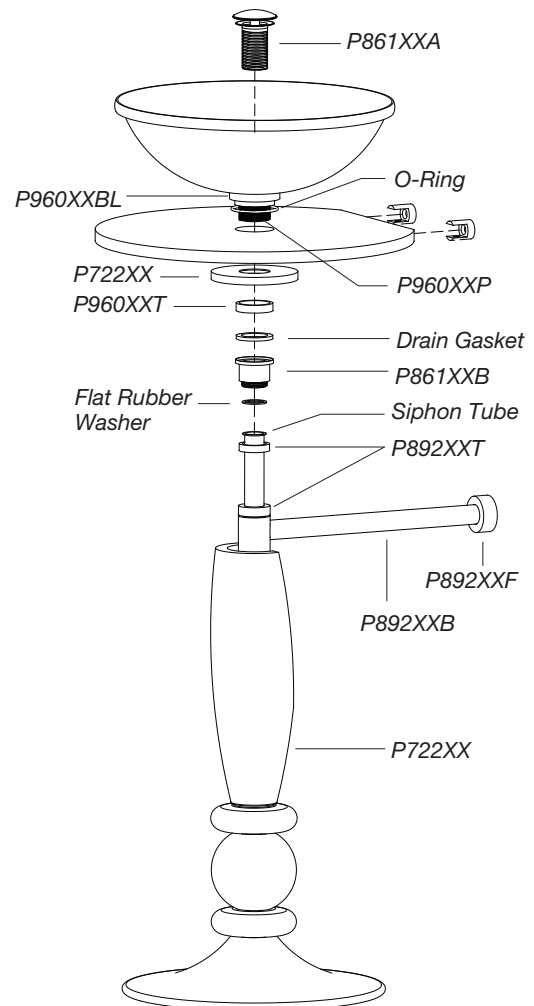
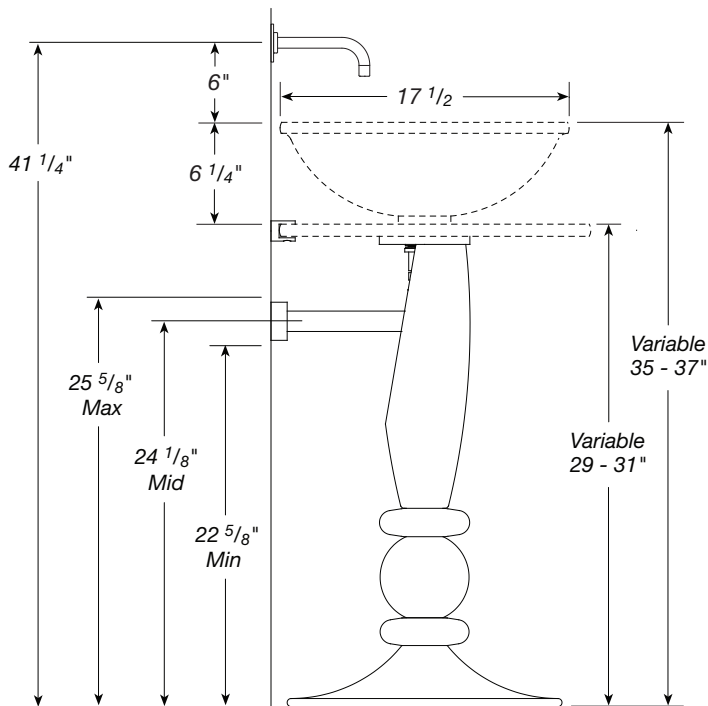
The Coppa Pedestal is mouth blown and therefore will exhibit variations due to process. Components are assembled to maintain an overall quality, aesthetic balance and size as shown. No two pedestals will be the same and no guarantee will be made for exact size. Height of the finished assembly will be 30" to the top of the counter, plus or minus 1". Custom variations available by quotation.

Prices shown for Cristal Polished glass. Coppa base may be ordered to coordinate with Vitraform standard colors by quotation.

PLAN VIEW



SIDE VIEW



Tel 303.295.1010 800.338.5725 Fax 303.292.1161 www.vitraform.com

3500 Blake St. Denver, CO 80205

VITRAFORM™

Example	Specify these individual items for finished pedestal installation:
Order No: 722 LP 10 <div style="display: flex; justify-content: space-around; font-size: small;"> A B C </div> 722 Pedestal Base only LP Cristal Polished Glass 10 Polished Chrome Cap	<ol style="list-style-type: none"> 1. Vitraform Freestanding Basin (see pg 2.1.1) 2. Countertop (see pg 4.5.8) 3. Drain (see pg B.1.1) 4. Surface Clip (see pg B.1.3) 5. Mirror (see pg C.4.3 and C.4.4)

Coppa Pedestal Installation Instructions

Please provide these instructions to contractor at point of sale.

Due to the handmade nature of the Coppa Pedestal the dimensions and fit will vary from unit to unit.

1. Before beginning this installation, all rough-in plumbing must be completed as shown in **Figure 1**.
2. Pre-assemble **Upper Assembly** as shown in **Figure 2**, by placing **Counter Top A** between two stands such as saw horses or boxes that have been protected with clean soft cloths to protect the glass from scratching. Insert **Freestanding Basin B** into hole in **Counter Top A**. Place **Pedestal Cap C** against bottom of CounterTop over threaded sink nipple and secure by hand tightening **knurled Coppa Nut D** on to sink nipple. Attach **Surface Clips E** to flat side of Counter Top at 8" centers.
3. Place **Coppa Pedestal F** in approximate final location with cut-out for drain closest to the wall.
4. This step is to determine **Euro Siphon G** return pipe length and Surface Clip attachment holes in the wall. Carefully place **Upper Assembly** onto **Pedestal F**. By holding the **Upper Assembly** on the Pedestal, carefully slide the Pedestal on the floor so Surface Clips touch the wall. Once final location is determined, mark wall for Surface Clip attachment holes. Measure proper length of Euro Siphon return pipe and cut to length.
5. Carefully slide assembly away from wall to drill for surface clips. Attach Surface Clips to wall using appropriate fasteners. Install **Drain H** and **Euro Siphon G** to basin.
6. Pedestals are usually shipped with clear rubber bumpers on the underside of glass foot. These bumpers are to protect the

- underside of the glass foot and the surface of the floor. Remove these clear rubber bumpers and clean off any residue that may be on the glass especially under the foot.
7. Carefully slide assembly back to final location, directing **Euro Siphon G** and return pipe with **Escutcheon I** to waste rough at wall. Tighten nylon set screws in **Surface Clips E** only enough to prevent the glass from being pulled out. Tighten drain connection at wall and slide **Escutcheon I** to wall. It may be necessary to lubricate the escutcheon with soapy water to get it to slide easily.
 7. The Upper Assembly is not glued to Pedestal, it merely rests on it. In Case the unit needs service in the future, it can be easily removed.
 5. Run a light bead of Clear Silicone around base of Pedestal to prevent water and dirt from getting under the base. This Clear Silicone can be cut later if removal is necessary.
 6. Use a clean soft cloth and glass cleaner to clean all glass components. Do NOT use scouring cleanser or an abrasive cloth.

Figure 1

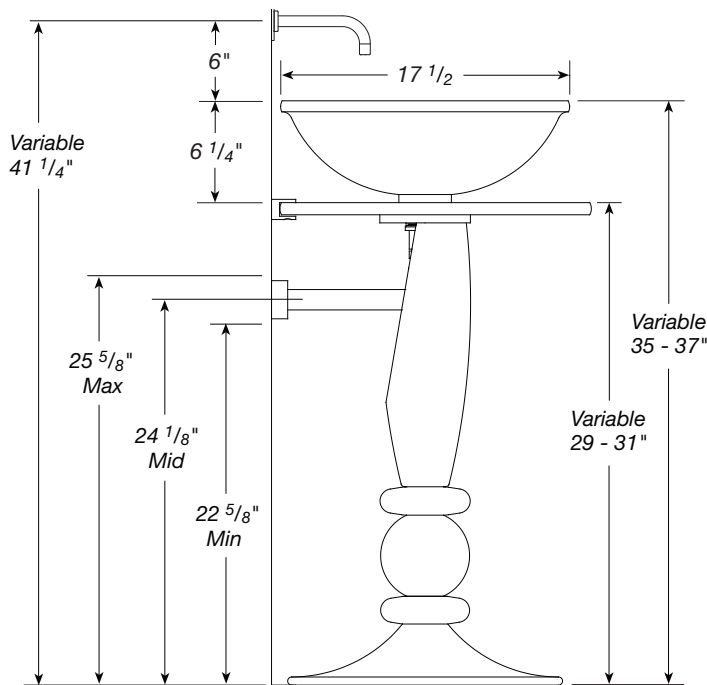
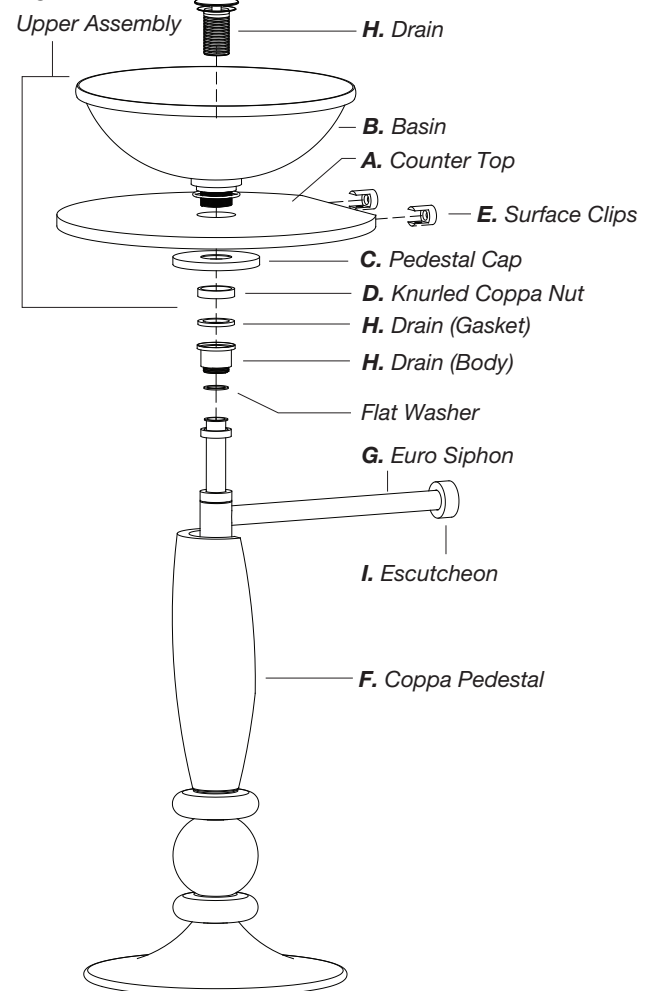


Figure 2



Care for the Vitraform Glass Sink: Use commercial glass cleaners sprayed onto a soft cloth to clean glass surface(s). Wipe basin dry after use to avoid mineral deposits on glass left by water spots. For frosted glass, special attention to stubborn stains or adhesives may be required. Silicone or other adhesives may be impossible to remove from frosted finishes. If contamination occurs attempt to remove adhesive with glass cleaner first, then denatured alcohol, paint thinner or mineral spirits. If none of these solvents work, the stain might be removed by re-blasting the bowl. Contact the factory for authorization to return the product for evaluation. A return authorization must accompany the product. Please pack the sink in the original box or other proper packing to assure its safe return and insure for full value.

Care for metal fittings and plated finishes: Wipe metal fittings dry after use to avoid water spots. Glass cleaner used on the Vitraform Glass Sink may be damaging to metal finishes. Use a diluted, neutral, liquid soap and a soft cloth to clean metal fittings. Never use an abrasive cloth or scouring pad.

PULLMAN PEDESTAL

A Specify Model

Pedestal includes Basin, curved Pedestal Panels and Base Foot.
See pg B.1.4 for choice of Overflow or Collar.

Item	Description	Retail Price
723	Pullman Pedestal	NA

B Specify Glass Color

Item	Color Group 1	Retail Price
C	Clear	\$ 2500.00
S	Starphire	\$ 2500.00
Z	Bronze	\$ 2500.00
G	Grey	\$ 2500.00
K	Black	\$ 2500.00

Item	Color Group 2	Retail Price
P	Peach	\$ 2905.00
A	Azurlite	\$ 2905.00
X	Solex	\$ 2905.00

Item	Color Group 3	Retail Price
T	Cobalt	\$ 3316.00
B	Blue	\$ 3316.00
W	White	\$ 3316.00
L	Cristal	\$ 3316.00
Q	Cristal Antq	\$ 3316.00

C Specify Glass Finish

Item	Description	Add'l Cost
P	Polished (Black, White or Cobalt only)	NC
O	Translucent *	NC

* White lamination conceals adhesive between Basin and Pedestal, creating a semi transparent effect.

D Overflow For specification only.

Item	Description	Retail Price
F	Overflow (Round)	NA
C	Overflow collar only	NA

Order overflow or collar separately on order form pg C.6.2
See section pg B.1.4 for metal finish costs and codes.

E Specify Base Foot Hardware Finish

Including metal Base, Leg and Towel Bar fittings.

Item	Description	Additional Cost
10	Polished Chrome	NC
12	Polished Nickel	NC
20	Satin Chrome	NC
22	Satin Nickel	NC
24	Vola Satin Chrome	NC
14	Polished Copper	\$ 190.00
15	Oil Rubbed Bronze	\$ 190.00
16	PVD Brass	\$ 190.00
17	Uncoated Polished Brass	\$ 190.00
21	Satin Brass	\$ 190.00
13	Polished Gold	\$ 250.00
23	Satin Gold	\$ 250.00
99	Custom	call for price

Tel 303.295.1010 800.338.5725 Fax 303.292.1161 www.vitraform.com

3500 Blake St. Denver, CO 80205

VITRAFORM™

Example	Specify these items separately if required:
Order No: 723 Z O F 10 A B C D E 723 Pedestal Basin and Foot Z Bronze Glass O Translucent Glass Finish F Overflow 10 Polished Chrome Base Foot	1. Drain (see pg B.1.1) 2. Overflow or Collar (see pg B.1.4) 3. Mirror (see pgs C.4.3 & C.4.4)

PULLMAN PEDESTAL

P.O. No: _____ Date: _____ Sales Person: _____ Tel: _____ Ext: _____

Pullman Order

Quantity: _____ Please use additional Order Forms for non-identical orders.

Order No: _____

A
B
C
D
E

Price: \$ _____ NA _____ NA _____ NA _____ TOTAL \$ _____

Overflow

Required Hardware. Choose Overflow or Collar.

See Hardware pg B.1.4

Qty.

Item / Fin. #

Price

- | | | | |
|--|--|--|--|
| <input type="checkbox"/> Overflow | | | |
| <input type="checkbox"/> Overflow Collar | | | |

Drain Sets

See Hardware pg B.1.1

Qty.

Item / Fin. #

Price

- | | | | |
|--|--|--|--|
| <input type="checkbox"/> Grid Set US/Euro | | | |
| <input type="checkbox"/> ADA Grid Set US/Euro | | | |
| <input type="checkbox"/> Pivot Drain Set US/Euro | | | |
| <input type="checkbox"/> Lever Pop-up Set US/Euro | | | |
| <input type="checkbox"/> Remote Pop-up Set US/Euro | | | |
| <input type="checkbox"/> Dome Open Set US/Euro | | | |
| <input type="checkbox"/> Dome Pop-up Set US/Euro | | | |

Notes

Net Crating Charge

Net Crating Charge Per Pedestal \$150.00

Shipping Information

Ship Via: Best Way or Specify Truck Line: _____

Bill to:

Company Name	Contact
Address	City State Zip
Phone	Fax Email

Ship to:

Name	Contact
Shipping Address	City State Zip
Phone	Contact

More Info: Ship Partial: YES NO Date required Mark boxes Other

Pullman Pedestal

Pullman Pedestal

Item 723.XX

NOTES:

For wall mount faucets only, specify spout projection.

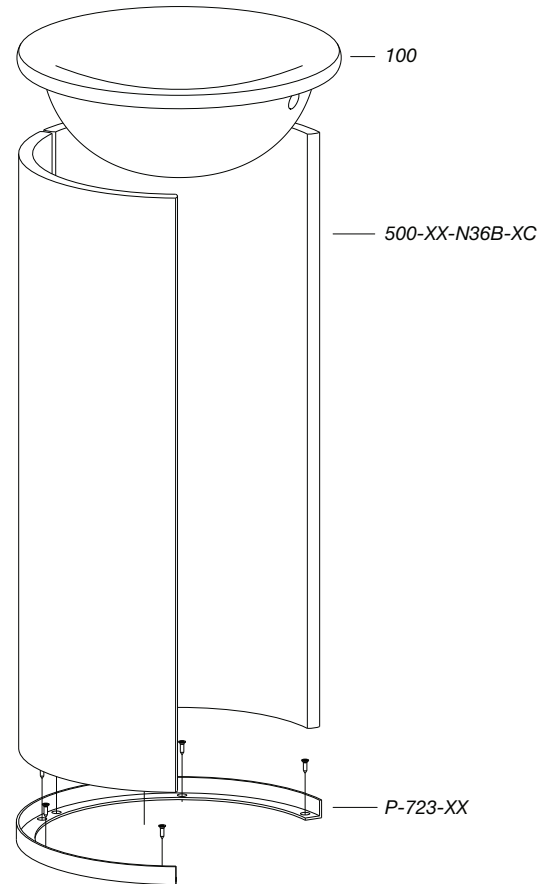
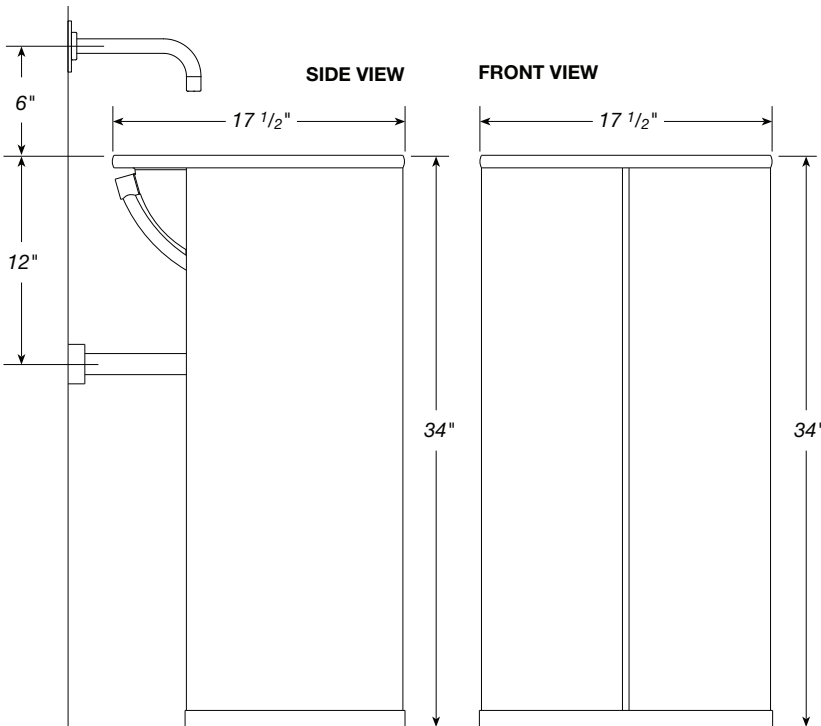
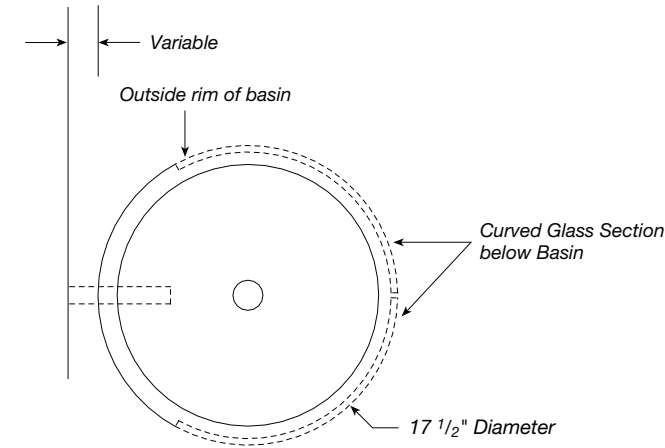
Does not include Overflow or Collar or Drain Set.

See pg B.1.4 for choice of Overflow or Collar to be ordered separately.

See pg B.1.1 for choice of Drains to be ordered separately.

Available only with White lamination layer for silicone attachment of bowl to curved pedestal panels with the exception of Black, White and Cobalt which are dense enough to conceal adhesive.

Request quotation for optional Countersink in place of Standard Basin for use with Deck Mounted Faucets.



Tel 303.295.1010 800.338.5725 Fax 303.292.1161 www.vitraform.com

3500 Blake St. Denver, CO 80205

VITRAFORM™

Example	Specify these items separately if required:
Order No: 723 Z O F 10 A B C D E 723 Pedestal, Basin and Base Foot Z Bronze Glass O Translucent Glass Finish F Overflow 10 Polished Chrome Base Foot	1. Drain (see pg B.1.1) 2. Overflow or Collar (see pg B.1.4) 3. Mirror (see pgs C.4.3 & C.4.4)

Pullman Pedestal Installation Instructions

Please provide these instructions to contractor at point of sale.

Installing the Pullman Pedestal is a difficult installation which requires specific skills used in the frameless shower enclosure industry. We recommend that this installation be done by an experienced glass installer.

1. Establish exact location of installation based upon the position of the wall faucet and centerline of the waste outlet. See rough-in recommendations in **Figure 1**. The distance from wall is determined by the spout projection of the faucet. Place Base Foot Template in its correct location, drill holes according to template and attach Base Foot to floor using appropriate hardware for flooring material. If floor is uneven Base Foot must be shimmed to flatness.
2. We recommend that the installer do a dry run to make sure all components mate correctly before glass is secured with adhesive. Once it has been determined that everything fits as planned go on to the next step.
3. Run a 3/16" bead of Clear Silicone at the inside angle of the **Base Foot A** and place the **Curved Glass Sections B** into their appropriate locations. Be careful not to allow the panels to touch each other to avoid chipping. Use several 3/16" spacers between the two curved glass sections to maintain the correct space between the sections. Use masking tape to keep the glass and spacers from shifting. Check the assembly so far by placing Glass Sink C onto curved glass sections but **DO NOT GLUE SINK ON AT THIS POINT**. Align the glass

- sections with the outside rim of the sink. Tape the sink onto the two glass sections using it to hold everything in place until the Clear Silicone in the base foot sets (about 24 hours).
4. After the silicone is set and the glass sections are securely attached, lift sink off of the glass sections. Run a 3/16" bead of Clear Silicone along upper edge of curved glass sections and replace the sink. Align sink again and tape in place. Do not attempt to clean off excess Silicone at this point. It is easier to clean off cured Silicone with a sharp razor blade than to attempt to clean it when it is uncured. Allow silicone to set before installing the drain (24 hours).
5. Once the silicone under the sink is set, install drain and faucet trim. Refer to Vitraform installation instruction page 1.a to install Overflow or Overflow collar on Sink. Clean excess silicone with sharp single edged razor blade carefully avoiding scratches to the glass. Finish installation with an overall cleaning with glass cleaner on glass parts and non abrasive mild detergent on metal fittings.

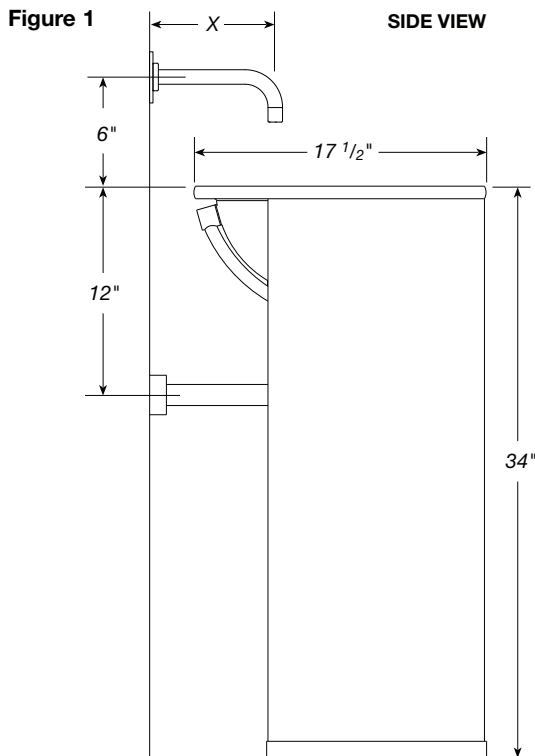
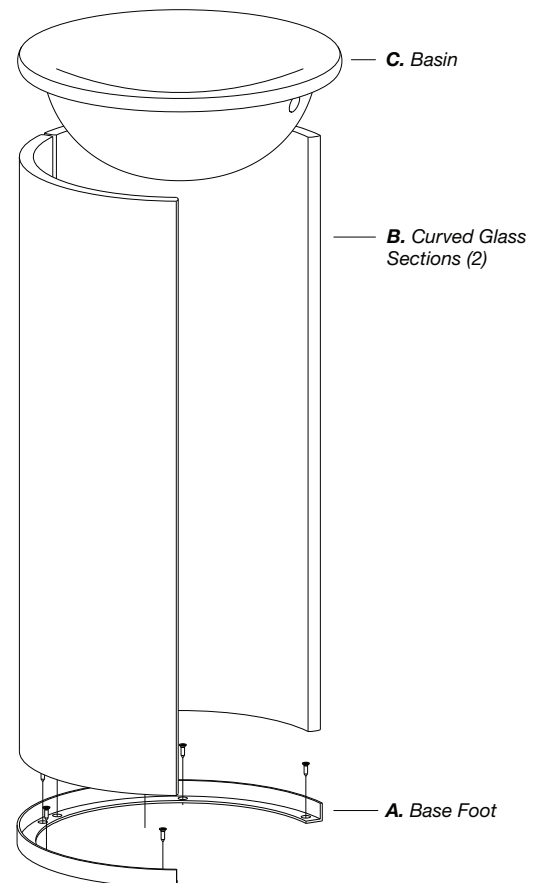


Figure 2



Care for the Vitraform Glass Sink: Use commercial glass cleaners sprayed onto a soft cloth to clean glass surface(s). Wipe basin dry after use to avoid mineral deposits on glass left by water spots. For frosted glass, special attention to stubborn stains or adhesives may be required. Silicone or other adhesives may be impossible to remove from frosted finishes. If contamination occurs attempt to remove adhesive with glass cleaner first, then denatured alcohol, paint thinner or mineral spirits. If none of these solvents work, the stain might be removed by re-blasting the bowl. Contact the factory for authorization to return the product for evaluation. A return authorization must accompany the product. Please pack the sink in the original box or other proper packing to assure its safe return and insure for full value.

Care for metal fittings and plated finishes: Wipe metal fittings dry after use to avoid water spots. Glass cleaner used on the Vitraform Glass Sink may be damaging to metal finishes. Use a diluted, neutral, liquid soap and a soft cloth to clean metal fittings. Never use an abrasive cloth or scouring pad.

CONSOLE

A Specify Model For specification only.

You are ordering 2 glass components (Part 1 and 2 below) to complete the Console.

Part 1: Countersink for Console

Item	Description
300	Round Single Basin Rectangular Front
302	Round Double Basin Rectangular Front
350	Oval Single Basin Rectangular Front
352	Oval Double Basin Rectangular Front

Item	Description
400	Round Single Basin Radius Front
402	Round Double Basin Radius Front
450	Oval Single Basin Radius Front
452	Oval Double Basin Radius Front

Part 2: Shelf for Console

Item	Description
500	Round Single Basin Rectangular Front
502	Round Double Basin Rectangular Front
550	Oval Single Basin Rectangular Front
552	Oval Double Basin Rectangular Front

Item	Description
600	Round Single Basin Radius Front
602	Round Double Basin Radius Front
650	Oval Single Basin Radius Front
652	Oval Double Basin Radius Front

B Specify Glass Color

Item	Group 1	Item	Group 2	Item	Group 3
C	Clear	P	Peach	T	Cobalt
S	Starphire	A	Azurlite	B	Blue
Z	Bronze	X	Solex	W	White
G	Grey			L	Cristal
K	Black			Q	Cristal Antq

C Specify Glass Finish

Item	Description	Add'l Cost
P	Polished	
F	Frosted 20-36"	\$290.00
	37-60"	\$350.00

D Overflow For specification only.

Item	Description
F	Overflow, Round or Oval
C	Overflow collar

Order overflow or collar separately on order form C.2.2
See pg B.1.4 for metal finish costs and codes.

E Specify Width (in 6 inch incremental price groups*)

Minimum width 24", Maximum width 60"
* Please write exact dimension in "Custom Options" on Order Form for Item E if other than standard 6 inch increments.
Price for Round or Oval, Radius or Rectangular.

Single Bowl Console

See Item B for color list.
Price includes both Countersink and Countertop.
Order Clips, Legs and Towel Bar on Order Form C.7.2

Item	Width	Color Group 1	Group 2	Group 3
24	24"	\$ 3640.00	\$ 3850.00	\$ 4275.00
30	30"	\$ 3940.00	\$ 4200.00	\$ 4730.00
36	36"	\$ 4235.00	\$ 4555.00	\$ 5185.00
42	42"	\$ 4535.00	\$ 4905.00	\$ 5645.00
48	48"	\$ 4835.00	\$ 5255.00	\$ 6100.00
54	54"	\$ 5135.00	\$ 5610.00	\$ 6560.00
60	60"	\$ 5435.00	\$ 5965.00	\$ 7015.00

Double Bowl Console

48	48	\$ 6015.00	\$ 6435.00	\$ 7275.00
54	54"	\$ 6310.00	\$ 6785.00	\$ 7735.00
60	60"	\$ 6610.00	\$ 7135.00	\$ 8195.00

F Installation Type For specification only.

Item	Description
B	Flush Clips

G Faucet Projection in inches (rounded), for coordination only.

Item	Description
6	6" wall mount
8	8" wall mount
9	9" wall mount
X	*Custom (other than above, or any deck mount faucet)

*All other faucet specs for wall mount spout projection or any deck mount faucets. Provide dimensions in Custom options of Order Form.

H Standard or Custom

Item	Description	Add'l Cost
S	Standard Models Wall mount faucet, no custom options	NA
C	Custom Options * Holes for faucets, each Height other than 34"	\$ 75.00 \$ NC

* Attach manufacturer's spec for deck or wall faucet.

Tel 303.295.1010 Fax 303.292.1161 www.vitraform.com

3500 Blake St. Denver, CO 80205

VITRAFORM™

Example	For Part 1 (Countersink)	Specify these individual items for finished Console installation:
Order No:	450 W P C 48 B X C	1. Overflow or Collar (pg B.1.4) 2. Drain (see pg B.1.1) 3. Console Leg and Towel Bar for Shelf (see pg xxx) 4. Mirror (see pgs C.4.1)
	A B C D E F G H	
450	Oval Single Basin Countersink for Console Part 1	
W	White glass	
P	Polished finish	
C	Overflow Collar	
48	Width of Counter in inches (rounded up to 6" increment for price)	
B	Flush to wall	
X	Custom: single hole deck faucet (attach specifications)	
C	Upcharge for deck mount faucet hole	
Part 2	Order separately on Order Form C.7.2	

CONSOLE

P.O. No: _____ Date: _____ Sales Person: _____ Tel: _____ Ext: _____

3500 Blake St. Denver, CO 80205 Tel 303.295.1010 800.338.5725 Fax 303.292.1161 www.vitraform.com

Countersink Order	Part 1 Quantity: _____ Please use additional Order Forms for non-identical orders.							
	Order No: _____							
	A	B	C	D	E	F	G	H
Price: \$ _____ NA _____ NA _____ NA _____ NA _____ NA _____ TOTAL \$ _____								

Countertop Order	Part 2 Quantity: _____		
	Please use additional Order Forms for non-identical orders.		
Order No: _____			
A			

Overflow	Required, please choose one.			
	See Hardware pg B.1.4	Qty.	Item / Fin. #	Price
<input type="checkbox"/> Overflow				
<input type="checkbox"/> Overflow Collar				
Drain Sets	See Hardware pg B.1.1	Qty.	Item / Fin. #	Price
	<input type="checkbox"/> Grid Set US/Euro			
	<input type="checkbox"/> ADA Grid Set US/Euro			
	<input type="checkbox"/> Pivot Drain Set US/Euro			
	<input type="checkbox"/> Lever Pop-up US/Euro			
	<input type="checkbox"/> Remote Pop-up US/Euro			
	<input type="checkbox"/> Dome Open Set US/Euro			
<input type="checkbox"/> Dome Pop-up Set US/Euro				
Install Hdw	See Hardware Page B.2.2 for options.			
	Console Legs	Qty.	Item/Fin. #	Price
	<input type="checkbox"/> with Curved Towel Bar			
<input type="checkbox"/> with Straight Towel Bar				
Faucet Specifications	Custom Faucet Specification			
	Deck mount faucet			
	<input type="checkbox"/> Single Hole*			
	<input type="checkbox"/> Wide spread*			
<input type="checkbox"/> Position in straight line				
<input type="checkbox"/> Follow line of bowl				
<input type="checkbox"/> Center to Center (specify dimension): _____				
*For Deck mount faucets attach manufacturer's specifications for spout projection, escutcheon size and hole size(s).				
Wall mount faucet				
<input type="checkbox"/> Wall spout projection (specify dimension): _____				
Custom Options	Custom Counter			
	<input type="checkbox"/> Size: enter exact dimensions			
	Width: _____		Depth: _____ Height: _____	
	<input type="checkbox"/> Shape (attach drawing or provide hard template)			
<input type="checkbox"/> Position of bowl (provide specification if other than centered)				
<input type="checkbox"/> Other (attach drawing)				

Net Crating Charge	<input type="checkbox"/> 24-42" width: \$100.00	<input type="checkbox"/> 43-60" width: \$150.00	<input type="checkbox"/> 61-84" width: \$200.00
---------------------------	---	---	---

Shipping Information	Ship Via: <input type="checkbox"/> Best Way or <input type="checkbox"/> Specify Truck Line: _____			
	Bill to:			
	Company Name		Contact	
	Address	City	State	Zip
	Phone	Fax	Email	
	Ship to:			
	Name			
	Shipping Address	City	State	Zip
	Phone	Contact		
	More Info: Ship Partials: <input type="checkbox"/> YES <input type="checkbox"/> NO			
Date requested		Mark boxes	Other	

VITRAFORM™

Console with Towel Bar

Rectangular Front

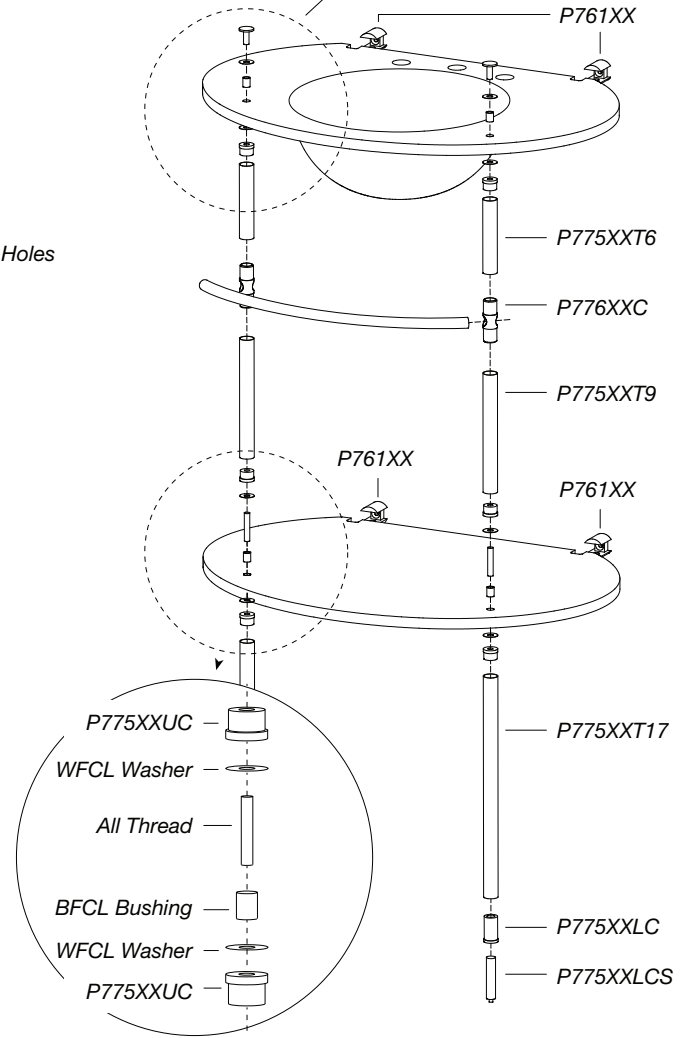
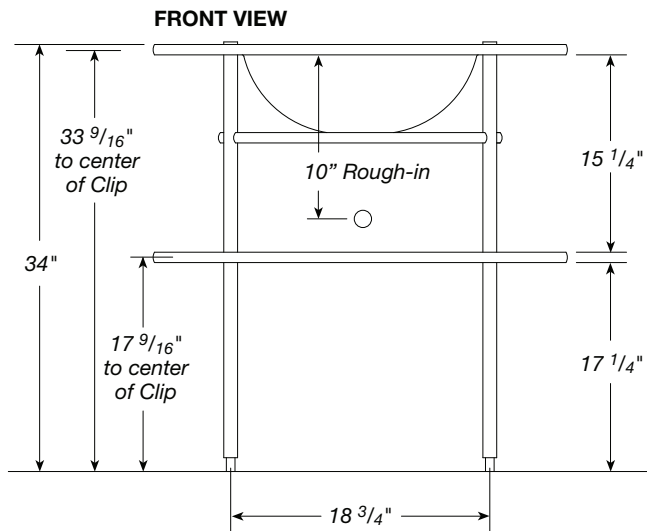
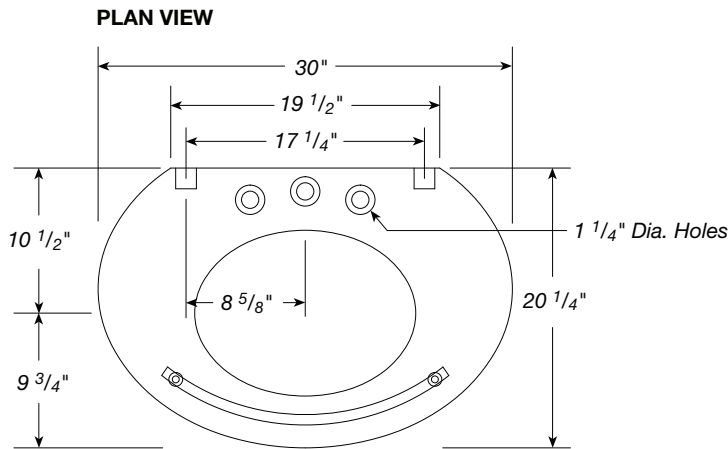
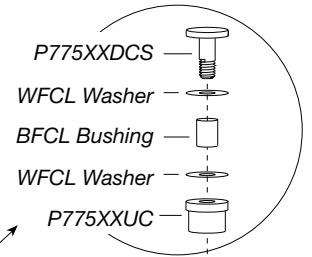
- Round Basin Item 300.XX
- Oval Basin Item 350.XX
- Double Round Basin Item 302.XX
- Double Oval Basin Item 352.XX

Radius Front

- Round Basin Item 400.XX
- Oval Basin Item 450.XX
- Double Round Basin Item 402.XX
- Double Oval Basin Item 452.XX

NOTES:
Specify faucet for hole size and position.
Order Drain Set separately, see pg B.1.1.
Shown with Flush Clips for attachment to back wall.

Item Numbers are for complete unit to simplify ordering. Invoice will show individual components to include Countersink, Countertop and Mounting System.



Tel 303.295.1010 800.338.5725 Fax 303.292.1161 www.vitraform.com

3500 Blake St. Denver, CO 80205

VITRAFORM™

Example	For Part 1 (Countersink)	Specify these individual items for finished Console installation:
Order No:	450 W P C 48 B X C	1. Overflow or Collar (pg B.1.4) 2. Drain (see pg B.1.1) 3. Console Leg and Towel Bar for Shelf (see pg B.2.2) 4. Mirror (see pgs C.4.1)
	A B C D E F G H	
	450 Oval Single Basin Countersink for Console Part 1	
	W White glass	
	P Polished finish	
	C Overflow Collar	
	48 Width of Counter in inches (rounded up to 6" increment for price)	
	B Flush to wall	
	X Custom: single hole deck faucet (attach specifications)	
	C Upcharge for deck mount faucet hole	
	Part 2 Ordered separately on Order Form C.7.2	

Console Installation Instructions

Please provide these instructions to contractor at point of sale.

Planning is an essential part of this installation.

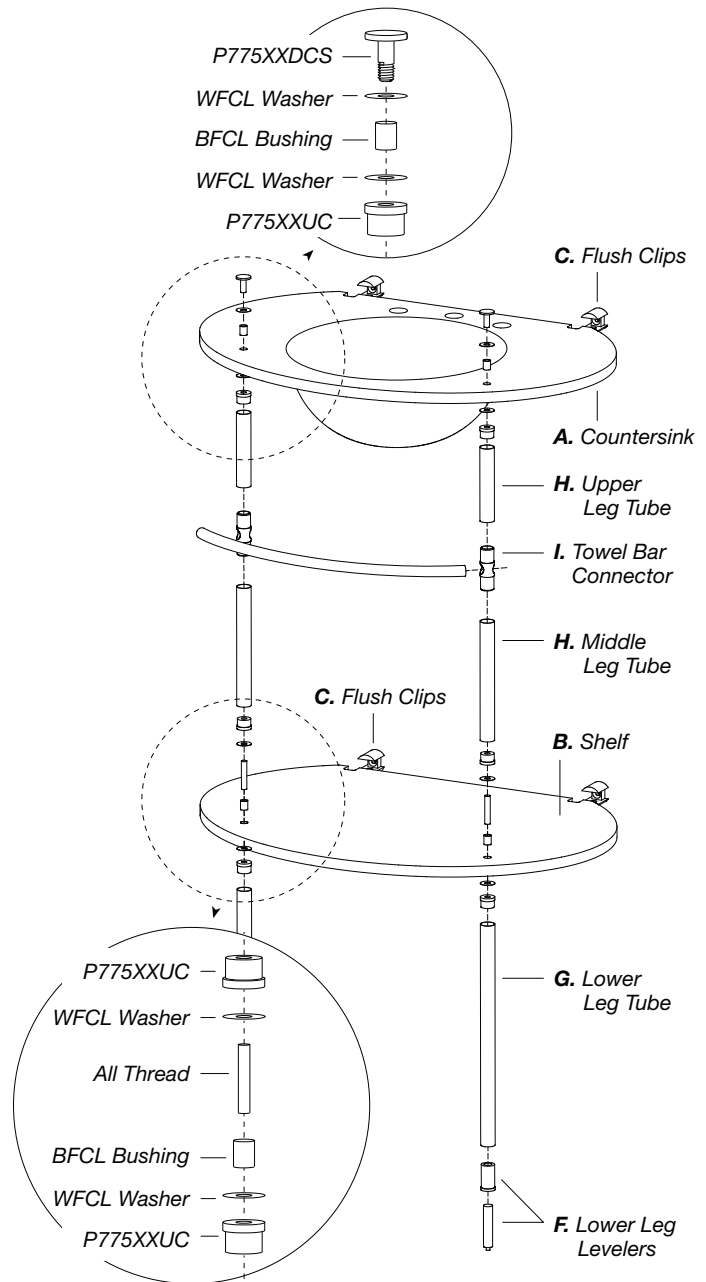
1. Accurately mark the wall with the finished counter height based upon waste pipe(s) at the center of the assembly. The rough-in should be 12" below the finished counter height. Using dimensions found on the specification page C.7.3 mark on wall the center of the **Flush Clips C** for both the **CounterSink A** and **Shelf B**. Using appropriate fasteners attach Flush Clips to wall. These devices are not adjustable or "levelable" so it is essential to locate and drill mounting holes accurately. When planning this installation remember that the glass is NOTCHED where the Flush Clip is to be installed, allowing only minor horizontal tolerance., so care must be taken to ensure that it is located correctly.
2. Once Flush Clips are attached to wall install all **Upper Caps B** on CounterSink and Shelf using **Decorative Cap Screws C** on CounterSink and **3/8" Threaded Stud E** on Shelf. See exploded view at right to properly assemble washers on the top and bottom of the glass and bushings in the holes to protect the glass.
3. Installation BEGINS WITH THE LOWER SHELF. Floor must be drilled with 1/4" diameter 1/4" deep holes to locate **Lower Leg Levelers F**. To determine proper location of these holes, insert the Lower Leg Levelers into the **Lower Leg assembly G** and adjust to their lowest setting. Attach Leg to Lower Shelf. Gently slide glass into corresponding Flush Clips and roughly adjust Lower Leg Levelers.

Glass is held in position in the Flush Clip by a 1/2" Nylon set screw which is tightened using a 1/4" Allen wrench. This set screw is designed to provide enough pressure to hold the glass from sliding yet allow some cushion for expansion and contraction of the glass and clip. When tightening the set screw make sure the Allen wrench is completely inserted into the hexagonal socket in the set screw to avoid stripping the socket.

Tighten Nylon Set Screws on **Flush Clips C**. By gently tapping Lower Legs and use of a bubble level, set the Lower Legs to a vertical orientation and mark floor. Disassemble the Lower Shelf, drill holes in floor, and reassemble Lower Shelf as before. Using a bubble lever make sure Lower Shelf is level. Place **Upper Leg Tubes H** onto **Upper Caps D** of the Lower Shelf. Gently slide CounterSink into **Upper Flush Clips C** and slide Upper Leg Tubes onto their corresponding Upper Caps. Tighten Nylon Set screws on Top Shelf Set Screws.

Install Towel Bar by carefully sliding through **Towel Bar Connector I** and center from left to right. Tighten #10-24 Set Screws to secure Towel Bar.

Attach supply, and drains as appropriate making sure NOT TO OVERTIGHTEN. This product is glass and is subject to breakage due to overtightening.



Care for the Vitraform Glass Sink: Use commercial glass cleaners sprayed onto a soft cloth to clean glass surface(s). Wipe basin dry after use to avoid mineral deposits on glass left by water spots. For frosted glass, special attention to stubborn stains or adhesives may be required. Silicone or other adhesives may be impossible to remove from frosted finishes. If contamination occurs attempt to remove adhesive with glass cleaner first, then denatured alcohol, paint thinner or mineral spirits. If none of these solvents work, the stain might be removed by re-blasting the bowl. Contact the factory for authorization to return the product for evaluation. A return authorization must accompany the product. Please pack the sink in the original box or other proper packing to assure its safe return and insure for full value.

Care for metal fittings and plated finishes: Wipe metal fittings dry after use to avoid water spots. Glass cleaner used on the Vitraform Glass Sink may be damaging to metal finishes. Use a diluted, neutral, liquid soap and a soft cloth to clean metal fittings. Never use an abrasive cloth or scouring pad.