

SOCIETY FOR  
**SAMBA** REGULATORY  
ANESTHESIA

Register Online at  
[www.SAMBAhq.org](http://www.SAMBAhq.org)

# SAMBA 2011 Mid Year Meeting

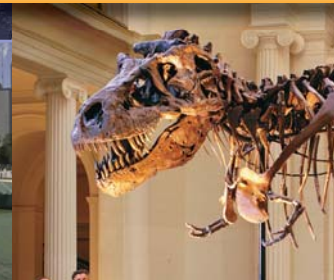
Workin' 9-5: A Safe, Efficient Day in an ASC  
(OK - Really 7-5 p.m.)

Friday, October 14, 2011

Hyatt Regency Chicago ♦ Chicago, Illinois

American Society of  
Anesthesiologists 

*Jointly sponsored by the American Society of Anesthesiologists (ASA).  
For your convenience, this meeting is presented one day prior to the ASA's Anesthesiology 2011.*



## Faculty

### **Fred E. Shapiro, D.O.**

#### ***Program Chair***

Assistant Professor of Anesthesia  
Harvard Medical School  
Department of Anesthesiology, Critical  
Care and Pain Medicine  
Beth Israel Deaconess Medical Center  
Boston, MA

### **Michael T. Walsh, M.D.**

#### ***Vice Chair***

Assistant Professor Anesthesia  
Mayo Clinic School of Medicine  
Rochester, MN

### **Pedram Aleshi, M.D.**

Assistant Clinical Professor  
Department of Anesthesia and  
Perioperative Care  
University of California, San Francisco  
San Mateo, CA

### **Steven F. Butz, M.D.**

Medical Director  
Surgicenter of Greater Milwaukee  
Assistant Professor  
Department of Anesthesiology  
Medical College of Wisconsin  
Milwaukee, WI

### **Stephan J. Cohn, M.D.**

Assistant Professor  
Clinical Director DCAM  
Operating Rooms  
Department of Anesthesia  
and Critical Care  
University of Chicago  
Chicago, IL

### **Thomas W. Cutter, M.D., M.A.Ed.**

Professor, Associate Chairman  
Department of Anesthesia  
and Critical Care  
Pritzker School of Medicine  
Medical Director  
Perioperative Services  
University of Chicago Medical Center  
Chicago, IL

### **John A. Dilger, M.D.**

Consultant in Anesthesia  
Mayo Rochester  
Rochester, MN

### **Lauren J. Fisher, D.O.**

Clinical Instructor of Anesthesia  
Director of Undergraduate Medical  
Education

Department of Anesthesia, Critical  
Care and Pain Medicine  
Beth Israel Deaconess Medical Center  
Boston, MA

### **Peter J. Foldes, M.D.**

Assistant Professor  
University of Iowa Hospitals & Clinics  
Iowa City, IA

### **Philip E. Hess, M.D.**

Associate Clinical Director  
Department of Anesthesia, Critical  
Care and Pain Medicine  
Assistant Professor  
Harvard Medical School  
Beth Israel Deaconess Medical Center  
Boston, MA

### **Christopher Jankowski, M.D.**

Assistant Professor of Anesthesiology  
Consultant in Anesthesiology  
Mayo Clinic  
Rochester, MN

### **Raime B. Kalish, M.D.**

Owner  
Mobile Anesthesiologists of Houston,  
PLLC  
Houston, TX

### **John J. Laur, M.D.**

ASC Medical Director  
Assistant Professor  
University of Iowa Hospitals & Clinics  
Iowa City, IA

### **Tariq M. Malik, M.D.**

Assistant Professor  
Department of Anesthesia and  
Critical Care  
Pritzker School of Medicine  
University of Chicago  
Chicago, IL

### **Douglas G. Merrill, M.D., M.B.A.**

Director  
The Center for Peri-operative Services  
Medical Director of Outpatient Surgery  
Department of Anesthesiology  
Dartmouth-Hitchcock Medical Center  
Lebanon, NH

### **Brian M. Parker, M.D.**

Vice Chairman  
Department of General  
Associate Professor of Anesthesiology  
Cleveland Clinic Lerner College of  
Medicine of Case Western Reserve  
University  
Cleveland, OH

### **Deborah C. Richman, M.B., Ch.B., FFA(SA)**

Assistant Professor of Clinical  
Anesthesiology  
Director Preoperative Services  
Department of Anesthesiology  
Stony Brook, NY

### **Marc R. Shnider, M.D.**

Instructor in Anesthesia  
Harvard Medical School  
Beth Israel Deaconess Medical Center  
Manchester, MA

### **Vijayendra H. Sudheendra, M.D.**

Medical Director, Southern New  
England Surgery Center  
St. Anne's Hospital  
Steward Health Care  
Attleboro, MA  
Assistant Professor of Surgery and  
Anesthesiology, Warren Alpert Medical  
School of Brown University  
Staff Anesthesiologist, Miriam Hospital  
Providence, RI

### **James E. Szalados, M.D., M.B.A., FCCM, FCCP, FCLM, Esq.**

Professor of Anesthesiology  
University of Rochester  
Medical Director, Surgical Critical  
Care and Tele-Critical Care  
Rochester General Hospital  
Westside Anesthesiology Associates  
of Rochester and Critical Care at Unity  
Health System  
VPMA and Chief Medical Officer  
Lakeside Health System  
Counsellor and Attorney at Law  
Rochester, NY

### **Mary Ann Vann, M.D.**

Staff Anesthesiologist  
Beth Israel Deaconess Medical Center  
Boston, MA  
Instructor in Anesthesia  
Harvard Medical School  
Medfield, MA

### **Arnaldo Valedon, M.D.**

Chief, Ambulatory Division  
Managing Partner  
First Colonies Anesthesia Associates  
Baltimore, MD

### **Hector Vila, Jr., M.D.**

Medical Director  
Florida Office Anesthesia  
Tampa, FL

## Registration Information

The registration fee for the SAMBA 2011 Mid-Year Meeting includes the course syllabus, all educational presentations, a continental breakfast, luncheon and coffee breaks. Registrations that are either faxed or mailed to the SAMBA office must be received by September 5th. Online registrations will be accepted until September 30th. After September 30th, only onsite registrations will be accepted. First-time applicable nonmembers, who register for this meeting, will be given SAMBA membership for 2012.

**SAVE TIME BY REGISTERING ONLINE AT [WWW.SAMBAHQ.ORG](http://WWW.SAMBAHQ.ORG)**

### SAMBA Breakfast Panel at the ASA's Anesthesiology 2011

Join us for the SAMBA Breakfast Panel

#### **“What Do I Need to Know Before My Patient Arrives?”**

Saturday, Oct 15, 2011, 7:00 - 8:15 a.m.

Hyatt McCormick Place-Regency C

Moderator: Steven Butz, M.D.

This panel will address common patient management issues (cardiac, diabetes, and OSA) and describe how to optimize the patients before they arrive for their procedures. It will touch on information needed and questions that need to be asked. Topics include: CHF, stents, ischemia, type 1 and type 2 diabetes, and OSA. It will also include the important pre-operative instructions that should be given to the patient and plans that should be made by the anesthesia provider.

#### **Speaker-Obstructive Sleep Apnea Patient**

Satya Krishna Ramachandran, M.D.

#### **Speaker-Cardiac Patient**

Catherine L. Cooper, M.D.

#### **Speaker-Diabetes Patient**

Mary Ann Vann, M.D.

#### **Session Learning Objectives:**

1. Identify and address cardiac issues related to stents, ischemia, and CHF to be resolved before undergoing ambulatory anesthesia
2. Evaluate a patient with obstructive sleep apnea for ambulatory surgery and tailor the anesthetic
3. Effectively evaluate patients with types 1 and 2 diabetes and optimize their management for ambulatory surgical procedures.

**Earn 1 hour of CME Credit from ASA**

# Program Information

## Jointly Sponsored by:

American Society of  
Anesthesiologists 

and

SOCIETY FOR  
**SAMBA**  
AMBULATORY  
ANESTHESIA

## Target Audience

This meeting is designed for anesthesiologists and anesthesia providers and practitioners who specialize in ambulatory or office-based anesthesia.

## About This Meeting

The purpose of this annual meeting is to educate and share information that will enable anesthesiology practitioners to provide the highest level of ambulatory anesthesia services and improve patient outcomes.

## CME Accreditation

This activity has been planned and implemented in accordance with the essential Areas and Policies of the Accreditation Council for Continuing Medical Education through the joint sponsorship of the American Society of Anesthesiologists and the Society for Ambulatory Anesthesia. The American Society of Anesthesiologists is accredited by the ACCME to provide continuing medical education for physicians.

The American Society of Anesthesiologists designates this live activity for a maximum of 7.5 *AMA PRA Category 1 Credit(s)*<sup>™</sup>. Physicians should only claim credit commensurate with the extent of their participation in the activity.

## Needs Assessment

Topics for this meeting were selected by various methods. Suggestions for topics were derived from evaluations of the 2010 and other previous Annual and Mid Year Meetings, the Annual and Mid Year Meeting Committees and Board members, reviews of the published literature with the highest impact on the specialty, and by soliciting suggestions from members of SAMBA active in the clinical practice of ambulatory anesthesia. These suggestions were discussed by our authorities in the field of ambulatory anesthesia with educators who attended previous annual, mid-year and board meetings.

## Educational Goals

After attending this meeting, the attendee will:

- Understand the effects of anesthesia and surgery on cognitive function in ambulatory surgical patients.
- Become familiar with the latest anesthetic techniques and technologies to increase efficiency and speed discharge in ambulatory surgical patients.
- Understand the most recent recommendations on patient and procedure selection in ambulatory surgery.
- Gain hands on experience with ultrasound guided regional anesthesia techniques, especially as they pertain to the ambulatory surgical patient.

## Disclaimer

The information provided at the above CME activities is for continuing medical education purposes only and is not meant to substitute for the independent medical judgment of a physician relative to diagnostic and treatment options of a specific patient's medical condition.

## Disclosure

The American Society of Anesthesiologists and the Society for Ambulatory Anesthesia adheres to ACCME Essential Areas, Standards, and Policies regarding industry support of continuing medical education. Disclosure of the planning committee and faculty's commercial relationships will be made known at the activity. Speakers are required to openly disclose and limitations of data and/or any discussion of any offlabel, experimental, or investigational uses of drugs or devices in their presentations.

## Resolutions of Conflicts of Interests

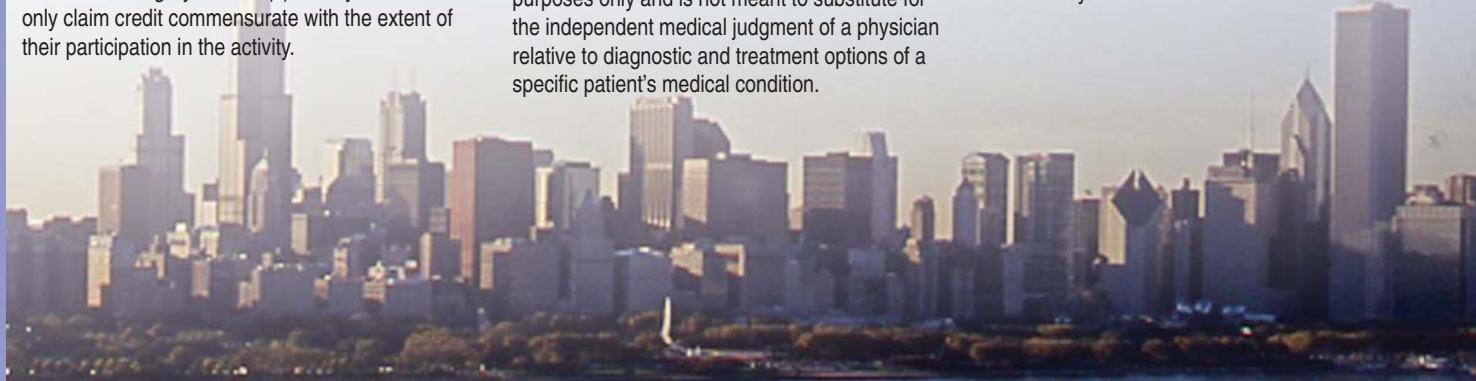
In accordance with the ACCME Standards for commercial support of CME, the American Society of Anesthesiologists and the Society for Ambulatory Anesthesia will implement mechanisms, prior to the planning and implementations of CME activity, to identify and resolve conflicts of interest for all individuals in a position to control content of this CME activity.

## Special Needs

The Society for Ambulatory Anesthesia fully complies with the legal requirements of the Americans with Disabilities Act and the rules and regulations thereof. If any attendee in this educational activity is in need of accommodations, please contact SAMBA at (847) 825-5586.

## Commercial Support Acknowledgement

The CME activity is supported by educational grants. A complete list of supporters will be published in the course syllabus.



# Schedule

\*All Mid Year Meeting attendees will be split into two groups so that all attendees can attend both workshops.

7:00 - 7:55 a.m.	<b>Breakfast with Exhibitors and Registration</b>
7:55 - 8:00 a.m.	<b>Introduction</b> Fred E. Shapiro, D.O.
8:00 - 10:00 a.m.	<b>Panel Presentation</b> Moderator: Fred E. Shapiro, D.O.
8:00 - 8:30 a.m.	<b>Preoperative Evaluation I: Patient Selection</b> Debra C. Richman, M.B., Ch.B., FFA(SA)
8:30 - 9:00 a.m.	<b>Preoperative Evaluation II: Procedure Selection</b> Mary Ann Vann, M.D.
9:00 - 9:30 a.m.	<b>Intraoperative I: Techniques for Rapid Discharge (Propofol or Not? Intubation or Not? Regional vs. General)</b> Hector Vila, Jr., M.D.
9:30 - 9:45 a.m.	<b>Question and Answer Session</b>
9:45 - 10:00 a.m.	<b>Coffee Break with Exhibitors</b>
10:00 a.m. - Noon	<b>Panel Presentation</b> Moderator: Brian M. Parker, M.D.
10:00 - 10:25 a.m.	<b>Intraoperative II: Technology Advances for Rapid Discharge (Electronics, EEG, BP Monitors, Sedation, and CO<sub>2</sub>)</b> Steven F. Butz, M.D.
10:25 - 10:50 a.m.	<b>Pain Control - New Drugs, Routes, and Combinations</b> John A. Dilger, M.D.
10:50 - 11:15 a.m.	<b>Robotic Surgery - What's New?</b> Thomas W. Cutter, M.D., M.A.Ed.
11:15 - 11:40 a.m.	<b>Post Operative Cognitive Dysfunction?</b> Christopher Jankowski, M.D.
11:40 a.m. - Noon	<b>Q&amp;A</b>
Noon - 1:00 p.m.	<b>Lunch Lecture: Practice Management for the ASC</b> James E. Szalados, M.D., M.B.A., FCCM, FCCP, FCLM, Esq.
1:00 - 2:30 p.m.	<b>Workshop Session 1*</b> <b>Regional US</b> Phillip E. Hess, M.D.; Marc R. Shnider, M.D.; Mary Ann Vann, M.D.; Lauren J. Fisher, D.O.; Vijayendra H. Sudheendra, M.D.; Pedram Aleshi, M.D.; John J. Laur, M.D.; Peter J. Foldes, M.D.; Stephan J. Cohn, M.D.; Tariq M. Malik, M.D. <b>Practice Management</b> Douglas G. Merrill, M.D., M.B.A.; James E. Szalados, M.D., M.B.A., FCCM, FCCP, FCLM, Esq.; Arnaldo Valedon, M.D.; Raime B. Kalish, M.D.

2:30 - 3:00 p.m.	<b>Coffee Break with Exhibitors</b>
3:00 - 4:30 p.m.	<b>Workshop Session 2*</b> <b>Practice Management</b> Douglas G. Merrill, M.D., M.B.A.; James E. Szalados, M.D., M.B.A., FCCM, FCCP, FCLM, Esq.; Arnaldo Valedon, M.D.; Raime B. Kalish, M.D. <b>Regional US</b> Phillip E. Hess, M.D.; Marc R. Shnider, M.D.; Mary Ann Vann, M.D.; Lauren J. Fisher, D.O.; Vijayendra H. Sudheendra, M.D.; Pedram Aleshi, M.D.; John J. Laur, M.D.; Peter J. Foldes, M.D.; Stephan J. Cohn, M.D.; Tariq M. Malik, M.D.
4:30 p.m.	<b>Adjourn</b>



## Hotel Information

The host hotel for the SAMBA 2011 Mid Year Meeting is the **Hyatt Regency Chicago**  
151 East Wacker Drive, Chicago, IL 60601  
Telephone (312) 565-1234

The Hyatt Regency Chicago is 3.3 miles to McCormick Place. The room rate is \$255 for single/double occupancy. Hotel reservations can be made at <http://www.asahq.org/Annual-Meeting/Registration-Housing-and-Travel/Housing.aspx> by September 17, 2011.

Make your reservations early! You can view all available hotels as well as make airline reservations through the ASA Annual Meeting Housing Bureau at <http://www.asahq.org/Annual-Meeting/Registration-Housing-and-Travel.aspx>.



# Future Meetings



## 27<sup>th</sup> Annual Meeting

May 3-6, 2012

Loews Miami Beach Hotel  
Miami Beach, Florida



## 2012 Mid Year Meeting

Friday, October 12, 2012  
Washington, DC



## SAMBA 28<sup>th</sup> Annual Meeting

May 16 – 19, 2013

Camelback Inn, A JW Marriott Resort and Spa  
Scottsdale, Arizona



## SAMBA Mid Year Meeting

Friday, October 11, 2013  
San Francisco, California

## SAMBA 27<sup>th</sup> Annual Meeting

May 3-6, 2012 • Loews Miami Beach Hotel • Miami Beach, Florida

.....

### Call for Abstracts and Resident Travel Awards

The Committee on Scientific Papers has issued a call for abstracts for the SAMBA 27th Annual Meeting to be held at the Loews Miami Beach Hotel, Miami Beach, Florida on May 3-6, 2012. Abstracts must be submitted online at [www.SAMBAhq.org](http://www.SAMBAhq.org). The deadline for abstract submissions is February 1, 2012.

### SAMBA Distinguished Service Awards

The Committee on Awards has issued a call for nominations for the Distinguished Service Award for presentation at the SAMBA 27th Annual Meeting in Miami Beach, Florida on May 3-6, 2012. The SAMBA Distinguished Service Award is presented to an individual for outstanding achievement in ambulatory anesthesia and is the highest honor which the Society can bestow. Members are invited to submit nominations for the award. Nominations must include a cover letter, a copy of the nominee's curriculum vitae and no more than four letters of support of the nomination. Nominations must be received at the SAMBA office by no later than August 9, 2011 and can be sent via e-mail to [n.bradle@asahq.org](mailto:n.bradle@asahq.org).

### Distinguished Service Award Recipients

1994	Marie-Louise Levy, M.D.	2003	Raafat S. Hannallah, M.D.
1995	Bernard V. Wetchler, M.D.	2004	Beverly K. Philip, M.D.
1996	Stanley Bresticker, M.D.*	2005	Rebecca S. Twersky, M.D., M.P.H.
1997	Harry C. Wong, M.D.	2006	Ervin Moss, M.D.
1998	Burton S. Epstein, M.D.	2007	-----
1999	Surinder K. Kallar, M.D.	2008	Jeffrey L. Apfelbaum, M.D.
2000	Wallace A. Reed, M.D.	2009	Frances Chung, M.D.
2001	Paul F. White, M.D., Ph.D.	2010	Lucinda L. Everett, M.D.
2002	Herbert D. Weintraub, M.D.*	2011	Barbara S. Gold, M.D.



Miami Beach, Florida

# SAMBA 2011 Mid Year Meeting Registration Form

Friday, October 14, 2011 • Hyatt Regency Chicago • Chicago, Illinois

Please Print or Type.

Name and Degree (M.D., D.O., etc.)

ABA #

Address

City

State

ZIP code

Country

Phone Number

Fax Number

E-Mail Address

## Payment

Check # \_\_\_\_\_ (Made payable to the Society for Ambulatory Anesthesia)

Visa       MasterCard       American Express

Credit Card Number

Expiration Date

Signature of Cardholder

**Payment Policy:** Payment must accompany registration or registration will not be processed. Checks must be in U.S. funds drawn on a U.S. bank account only and made payable to the Society for Ambulatory Anesthesia.

\*A CVV Number is the three digit code on the signature line on the back side of your credit card.

**Cancellation Policy:** Cancellation of registration must be submitted in writing, and will be accepted up until October 9. Your refund, less a \$50 administrative fee, will be sent after the conclusion of the meeting.

Send by September 6<sup>th</sup> to:

**SAMBA**

520 N. Northwest Highway • Park Ridge, IL 60068-2573

Phone: (847) 825-5586 • Fax: (847) 825-5658

You may also register online at [www.SAMBAhq.org](http://www.SAMBAhq.org) until October 9.

## Registration Fees

	Through Sept. 6	After Sept. 6
<input type="checkbox"/> SAMBA Active and Affiliate Members	\$145	\$195
<input type="checkbox"/> Nonmember Physicians	\$340	\$390
<input type="checkbox"/> Nurse Anesthetists	\$195	\$245
<input type="checkbox"/> Residents	\$50	\$100
Total	_____	_____

**Please check all that apply so we may better meet your needs.**

- I will require handicap assistance.
- I will require vegetarian meals.
- I will require kosher meals.
- I will require assistance not specified on this form. If so, please contact SAMBA at (847) 825-5586.