



AUDITION FORM

SPRING 2015 PRODUCTION SERIES

Do not write in these 3 boxes:

Height inches

Aud#

NAME

AGE

GRADE

SCHOOL

STUDENT'S PERSONAL PHONE (if any)

AUDITION INFORMATION

Desired Role(s):

Circle desired show(s):

FACES

The Prince of Egypt

SHREK

Circle the correct answer for you - include your sizes for costuming!

Will you accept a role if your sibling is not cast? YES NO OR No sibling auditioning

Will you accept any role if not cast as your desired role? YES NO

Will you accept a role of your opposite gender? YES NO

Will you change your hair if cast in a leading role? YES NO

Will you accept a backstage or technical position? YES NO

Do you have or will you get braces/etc. before the show? YES NO

Are you enrolled in a vocal class performing **Prince of Egypt**? YES NO

(**SHREK-Pinocchio**) Can you speak with a high cartoon voice? YES NO

(**SHREK-3 pigs**) Can you speak with a German accent? YES NO

Comments/Concerns about these questions:

Circle your t-shirt size: **YS YM YL AS AM AL AXL AXXL AXXXL**

Pants/Skirt Size

Shirt/Blouse Size

Jacket Size

Costume comments/questions

PARENT/GUARDIAN INFORMATION

PARENT/GUARDIAN 1

PARENT/GUARDIAN 2

CELL

CELL

HOME

HOME

WORK

WORK

EMAIL

EMAIL

PARENTAL CONSENT

Parent/Guardian signature: _____ (acknowledges Expectations & Fees, confirms conflicts calendar, and gives permission for child to participate in auditions.)



AUDITION FORM - p.2

Name, Age, Phone

SPRING 2015 PRODUCTION SERIES

STUDENT PERFORMANCE TRAINING & EXPERIENCE

List training before experience. Resumes welcome, but this form is required. LEAVE NUMBER SECTIONS BLANK.

List Acting Training / Experience

Do NOT fill out this numbered area

Volume: 1 2 3 4 5	Physicality: 1 2 3 4 5	Presence: 1 2 3 4 5
Diction: 1 2 3 4 5	Energy: 1 2 3 4 5	Character: 1 2 3 4 5

List Dance Training / Experience

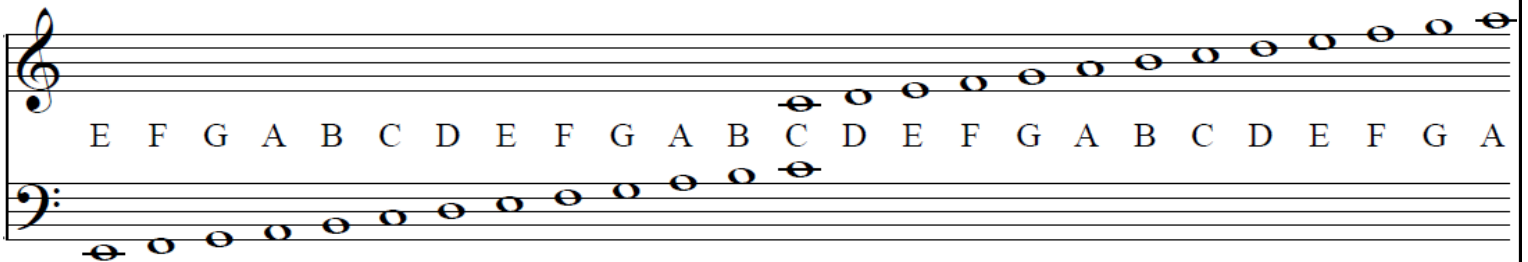
Do NOT fill out this numbered area

Jazz: 1 2 3 4 5	Core & Balance: 1 2 3 4 5	Leaps: 1 2 3 4 5
Ballet: 1 2 3 4 5	Rhythm: 1 2 3 4 5	Turns: 1 2 3 4 5

List Vocal Training / Experience

Do NOT fill out this numbered area
or the scale below

Pitch: 1 2 3 4 5	Rhythm: 1 2 3 4 5	Diction: 1 2 3 4 5
Tone: 1 2 3 4 5	Volume: 1 2 3 4 5	Expression: 1 2 3 4 5



List Special Skills (or other abilities to consider for casting you in a Fall production)

Do NOT fill out this
numbered area

Professionalism: 1 2 3 4 5	Focus: 1 2 3 4 5	Dress: 1 2 3 4 5
Behavior: 1 2 3 4 5	Preparation: 1 2 3 4 5	Direction: 1 2 3 4 5



AUDITION FORM - p.3
SPRING 2015 PRODUCTION SERIES
REHEARSAL CONFLICT SHEET

Name, Age & Phone

Describe ALL your conflicts in boxes below. **Director will create schedules based on this form.** If you are cast, the Director accepted conflicts listed here **PRIOR TO CASTING.** Later conflicts could lead to role re-assignment.

NO CONFLICTS FOR EACH SHOW FOR 7 DAYS PRIOR TO OPENING NIGHT!

<i>possible rehearsal times</i>	Monday	Tuesday	Wednesday	Thursday	Friday	Saturday	Sunday
	7:30p-8:30p	6:30p-8:30p	6:30p-8:30p	5:00p-8:30p	4:30p-9:00p	10a-9p 3 shifts	1p-8p 2 shifts
February/ March			25	26	27	28	1
	2	3	4	5	6	7	8
	9	10	11	12 <i>Winterfest</i>	13 <i>Winterfest</i>	14 <i>Winterfest</i>	15 <i>Winterfest</i>
	16	17	18	19	20	21	22
April	23	24	25	26 <i>FACES</i>	27 <i>FACES</i>	28 <i>FACES</i>	29 <i>FACES</i>
	30	31	1	2	3 Spring Break	4 Spring Break	5 Spring Break
	6 Spring Break	7 Spring Break	8 Spring Break	9 Spring Break	10 Spring Break	11	12
	13	14	15	16	17	18	19
May	20	21	22	23 <i>Egypt Dress</i>	24 <i>Prince Egypt</i>	25 <i>Prince Egypt</i>	26 <i>Prince Egypt</i>
	27	28	29	30 <i>Springfest</i>	1 <i>Springfest</i>	2 <i>Springfest</i>	3 <i>Springfest</i>
	4	5	6	7	8	9	10
	11	12	13	14 <i>SHREK</i>	15 <i>SHREK</i>	16 <i>SHREK</i>	17 <i>SHREK</i>
	18	19	20	21 <i>SHREK</i>	22 <i>SHREK</i>	23 <i>SHREK</i>	24 <i>SHREK</i>

Comments or concerns: