

## **Appendix A**

### **Hazard Identification, Risk Assessment and Vulnerability**

- Severe Thunderstorms
  - Severe Thunderstorm Description
  - GEMA Worksheet #3
- Flooding
  - Flooding Description
  - GEMA Worksheet #3
  - Hazard Area Maps
- Winter Storms
  - Winter Storms Description
  - GEMA Worksheet #3
- Drought
  - Drought Description
  - GEMA Worksheet #3
- Wildfires
  - Wildfires Description
  - GEMA Worksheet #3
- Earthquakes
  - Earthquake Description
  - GEMA Worksheet #3
- Critical Facilities Spreadsheet
- Elbert County Critical Facilities Map
- City of Bowman Critical Facilities Map
- City of Elberton Critical Facilities Map

## **I. Severe Thunderstorms** (Referenced in Chapter 2 – Section 2.1)

As discussed in Chapter 2 – Section 2.1 Severe Thunderstorms include Tornados, Hail, and Lightning and are each described in the following section.

### **A. Description**

#### **Thunderstorms:**

Thunderstorms are most prevalent in the central and southern United States. Each year, an average of 100,000 thunderstorms occur. A thunderstorm forms from rapidly rising warm air that is lifted by either a warm or cold front. Moisture must also be present under these conditions to produce a thunderstorm that can occur singly, in clusters, or in lines. A thunderstorm can also produce other hazards that include: heavy rain, strong winds, hail, lightening, and tornados.

The National Weather Service provides information about thunderstorms through watches and warnings. A thunderstorm watch means that winds in excess of 58 miles per hour and/or hail are likely to develop. A warning means a thunderstorm has been sighted and everyone should proceed to a safe location. In general, thunderstorms can cause significant damage and disruption of services. Power outages can occur and traffic flows can be severely disrupted from thunderstorms. Thunderstorms also pose a high risk for loss of life and advisories help protect the public from this hazard.

#### **Hail:**

A hailstone is a product of the updrafts and down drafts that develop inside the cumulonimbus clouds of a thunderstorm, where supercooled water droplets exist. The transformation of droplets to ice requires not only a temperature below 32F(0C), but also a catalyst in the form of tiny particles of solid matter, or freezing nuclei. Continued deposits of supercooled water cause the ice crystals to grow into hailstones. What we generally call hailstones have passed through several stages of accretion, from the first stage, called graupel, to small hail, to hailstones. Sometimes only the first stage is reached; at other times hailstones from two or more stages may fall to earth simultaneously. By scientific agreement, an icy conglomeration is called a hailstone when it reaches a diameter of 1/5 inch (5 mm). In all its forms, hail usually occurs in relatively short episodes rather than as steady precipitation.

#### **Lightning:**

By definition all thunderstorms contain lightning, which occurs when the difference between the positive and negative charges becomes great enough to overcome the resistance of the insulating air and to force a conductive path for current to flow. Electrical potential can be as much as 100 million volts and strikes can proceed from cloud to cloud, cloud to ground, or from ground to cloud. The summer months of June through August represent the peak of lightning strikes in the state of Georgia.

## **Tornados:**

Tornados vary in strength that is determined by their wind speeds ranging from 40-318 miles per hour. All tornados come from the same conditions: a violent column of air reaching from a thunderstorm to the ground. This column of air can also travel across land, covering up to a one-mile width over a distance of up to fifty miles. The path a tornado travels is unpredictable.

In Georgia, tornado season occurs from March through August. They can, however, occur in any given month if the right atmospheric conditions exist. In most cases, tornados strike in the afternoon and evening hours. A tornado's conditions typically involve a layer of cold air overriding a layer of warm air that forces the warm air to rise quickly. This combination of air temperatures is most often produced from the results of thunderstorms and hurricanes but also from wildfires.

The destructive capacity of tornados and their inherent high winds can be severe. Their winds can remove buildings, structures, and vegetation that lie in their path. A tornado's wind can also carry debris that can result in serious damage when impacted with another objects or people. Each year, approximately 1,000 tornados are reported that result in 80 deaths and over 1,500 injuries.

A tornado's winds typically travel at 30 miles per hour and vary between 0-70 miles per hour. In many instances, a tornado's path moves from southwest to northeast but the direction can shift or change at any moment. A tornado's speed determines its classification as listed below:

- Category F0: Gale Tornado (40-72 mph). Light Damage
- Category F1: Moderate Tornado (73-112). Moderate Damage
- Category F2: Significant Tornado (113-157 mph). Considerable Damage
- Category F3: Severe Tornado (158-206). Severe Damage
- Category F4: Devastating Tornado (207-318 mph). Devastating Damage
- Category F5: Incredible Tornado (261-318 mph). Incredible Damage

This classification system is known as the Fujita Damage Scale, or "F Scale," and is used to measure the potential damage caused by a tornado. For each category, certain damages can be expected as listed below:

- Category F0: Damage to chimney, tree limbs, and outdoor signs.
- Category F1: Damage to roofing materials, mobile homes, and cars blown off road.
- Category F2: Roofs torn from houses, boxcars overturned, and large trees uprooted.
- Category F3: Roof and walls torn away, trains overturned, and cars lifted off ground.
- Category F4: Houses leveled, structures removed, and large objects become airborne.

Category F5: Houses lifted off foundations and swept away, automobiles moved over 100 meters, and trees debarked.

While this scale is used only as a guide, it does provide a rating system that qualifies a tornado's destructive potential.



## **I. Flooding (Referenced in Chapter 2 – Section 2.2)**

### **A. Description**

#### **Flooding:**

Flooding is a natural event that occurs in any given geographical area and is largely dependant topographic and physical characteristics, such as elevation, vegetative cover, and drainage. An area is likely to flood if these characteristics are present and when large amounts of rainfall occur over short and/or long periods of time. When a large amount of rain falls in a short period of time, flash floods can result that typically cause minimal damage. When rain continuously falls over a longer period of time, soils become saturated and/or supersaturated and loose their ability to absorb water. In this set of circumstances, conditions are conducive to flooding as water moves to low-lying areas. It is the type of flooding that causes the most significant damage.

The potential for floods to occur can also increase as more and more land is developed and made impervious to water. Roads, parking lots and driveways, for example, prevent the ground from absorbing water. If this water is not adequately transferred or contained, it can cause flooding. Storm water management is intended to mitigate the effects of run off water from developed areas, reducing the potential for flooding and other effects.

Flooding, more generally, is a natural event for rivers and streams that occurs as increased flows of water extend above banks and into floodplains. These floodplains lie adjacent to rivers and streams and are subject to reoccurring floods. Flooding is the most common natural hazard as it occurs each year. Property within the floodplain is similarly susceptible to damage and destruction. Many homes throughout the United States exist within these floodplains and are vulnerable to floods. As nine million homes actually exist in the floodplains nationally, the effects of flooding result can also result in loss of life and significant property damage. Each year, 150 deaths occur from flooding. When property damage and loss of life are combined, flooding remains one of the most devastating hazards confronting many communities.

**GEMA Worksheet #3**

**Inventory of Assets**

**Elbert County, GA**

Date:

Hazard: Flood

**Task A. Determine the proportion of buildings, the value of buildings, and the population in your community or state that are located in hazard areas.**

Type of Structure (Occupancy Class)	Number of Structures			Value of Structures			Number of People		
	# in Community	# in Hazard Area	% in Hazard Area	\$ in Community	\$ in Hazard Area	% in Hazard Area	# in Community	# in Hazard Area	% in Hazard Area
Residential	25,060	336	1.341%	\$440,561,312	\$597,567	0.136%	17,273	350	2%
Commercial	1,628	8	0.491%	\$88,039,932	\$432,276	0.491%	172	3	2%
Industrial	809	5	0.618%	\$35,446,360	\$219,058	0.618%	13	3	23%
Agricultural	4,948	509	10.287%	\$61,130,077	\$6,288,451	10.287%	2,571	433	17%
Religious/ Non-profit	604		0.000%	\$61,360,192		0.000%	0	0	#DIV/0!
Government	892		0.000%	\$497,768,190		0.000%	0	0	#DIV/0!
Education	111		0.000%	\$52,299,255		0.000%	0	0	#DIV/0!
Utilities	23		0.000%	\$89,010,380		0.000%	0	0	#DIV/0!
<b>Total</b>	<b>34,075</b>	<b>858</b>	<b>2.518%</b>	<b>\$1,325,615,698</b>	<b>\$7,537,352</b>	<b>0.569%</b>	<b>20,029</b>	<b>789</b>	<b>4%</b>

**Task B. Determine whether (and where) you want to collect additional inventory data.**

1. Do you know where the greatest damages may occur in your area?
2. Do you know whether your critical facilities will be operational after a hazard event?
3. Is there enough data to determine which assets are subject to the greatest potential damages?
4. Is there enough data to determine whether significant elements of the community are vulnerable to potential hazards?
5. Is there enough data to determine whether certain areas of historic, environmental, political, or cultural significance are vulnerable to potential hazards?
6. Is there concern about a particular hazard because of its severity, repetitiveness, or likelihood of occurrence?
7. Is additional data needed to justify the expenditure of community or state funds for mitigation initiatives?

Yes	No
x	
x	
	x
	x
x	
	x
x	

Government Nancy Hart Cabin

Utilities Elberton Waste Clarifier #1

Bowman Water & Well System \*need value info on structures\*

NK notes on methodology

Multiplier for persons per household = 2.61 (2010 Census)

Utilized LUCA residential address points to determine # households by LU category

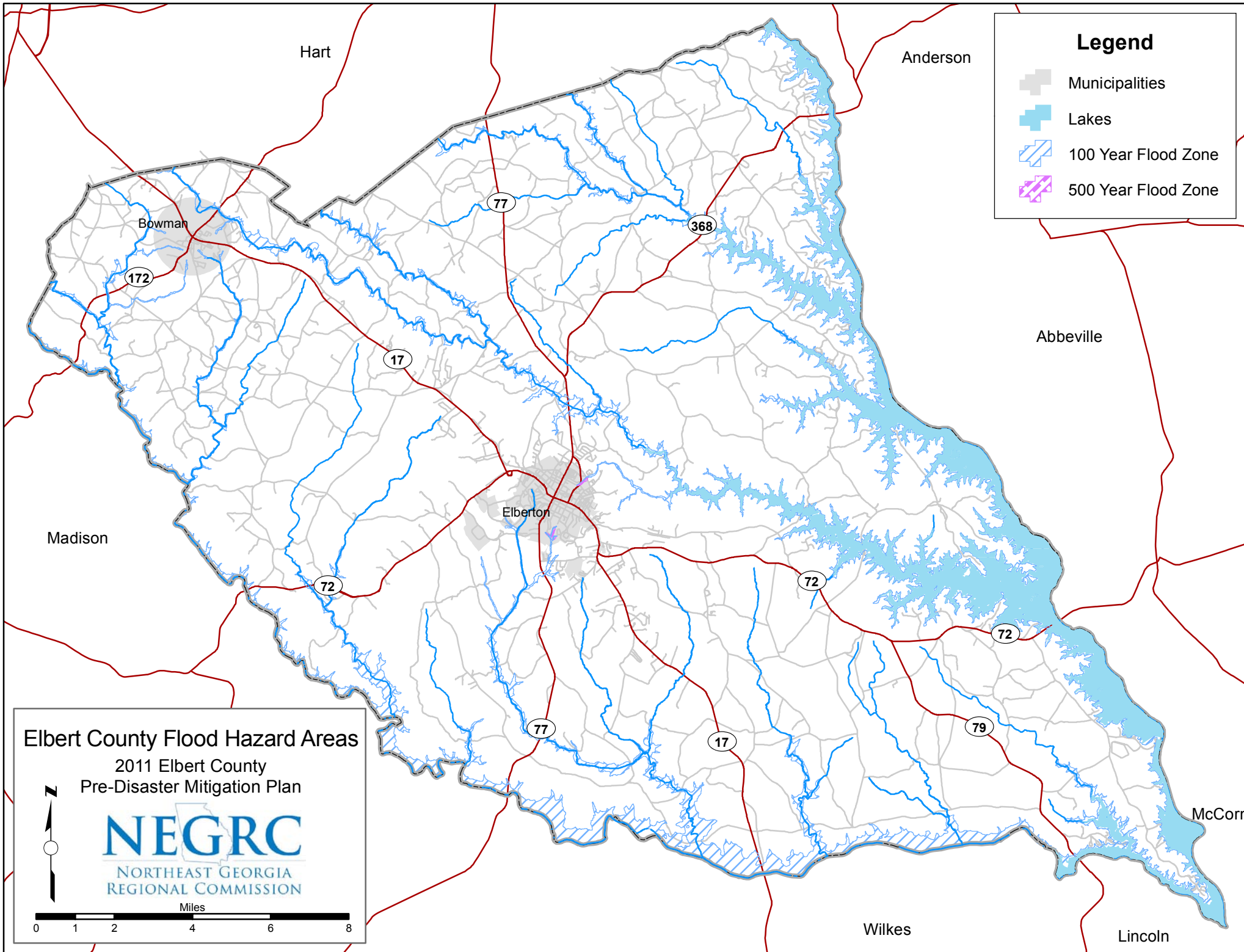
Agriculture includes conservation use exemption properties

Residential includes "exempt" category - likely church parsonages





For ppl hazard area - # people based on those properties which have a portion of land in the floodplain (not necessarily the structure itself); only 3/302 properties lie completely in the floodplain

For # structures in hazard area, utilize those parcels which have a portion of land in the floodplain, assume one structure per parcel

For value of structures in hazard area, assume same percentage of structures in hazard area with total value in community

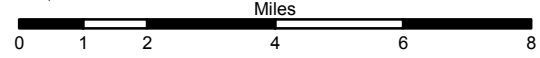


### Legend

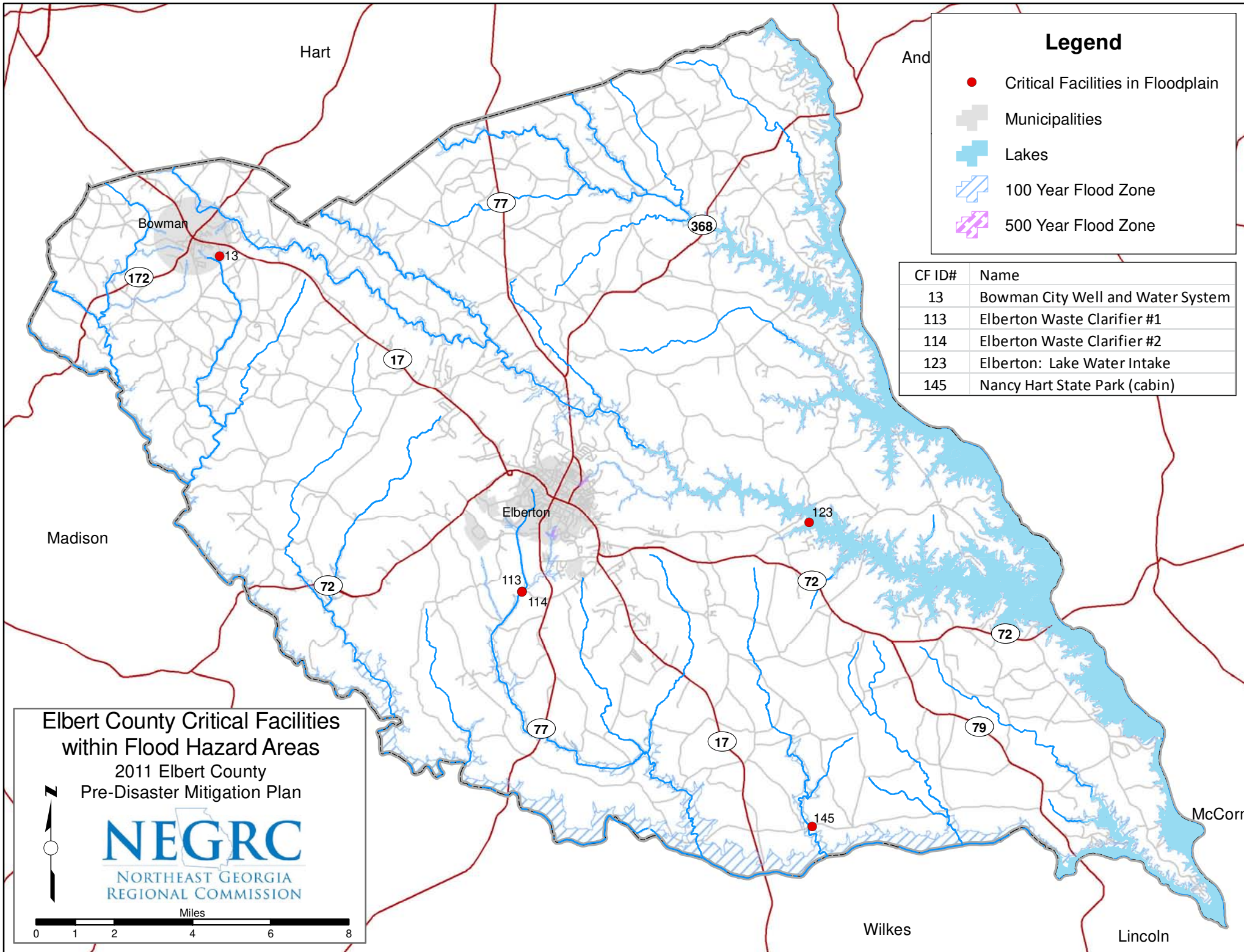
-  Municipalities
-  Lakes
-  100 Year Flood Zone
-  500 Year Flood Zone

## Elbert County Flood Hazard Areas

2011 Elbert County  
Pre-Disaster Mitigation Plan







### Legend

- Critical Facilities in Floodplain
- Municipalities
- Lakes
- 100 Year Flood Zone
- 500 Year Flood Zone

CF ID#	Name
13	Bowman City Well and Water System
113	Elberton Waste Clarifier #1
114	Elberton Waste Clarifier #2
123	Elberton: Lake Water Intake
145	Nancy Hart State Park (cabin)

**Elbert County Critical Facilities  
within Flood Hazard Areas**

2011 Elbert County  
Pre-Disaster Mitigation Plan

**NEGRRC**  
NORTHEAST GEORGIA  
REGIONAL COMMISSION

Miles

Madison

Hart

And

McCormick

Wilkes

Lincoln

Bowman

Elberton

(172)

(77)

(368)

(17)

(72)

(113)

(114)

(72)

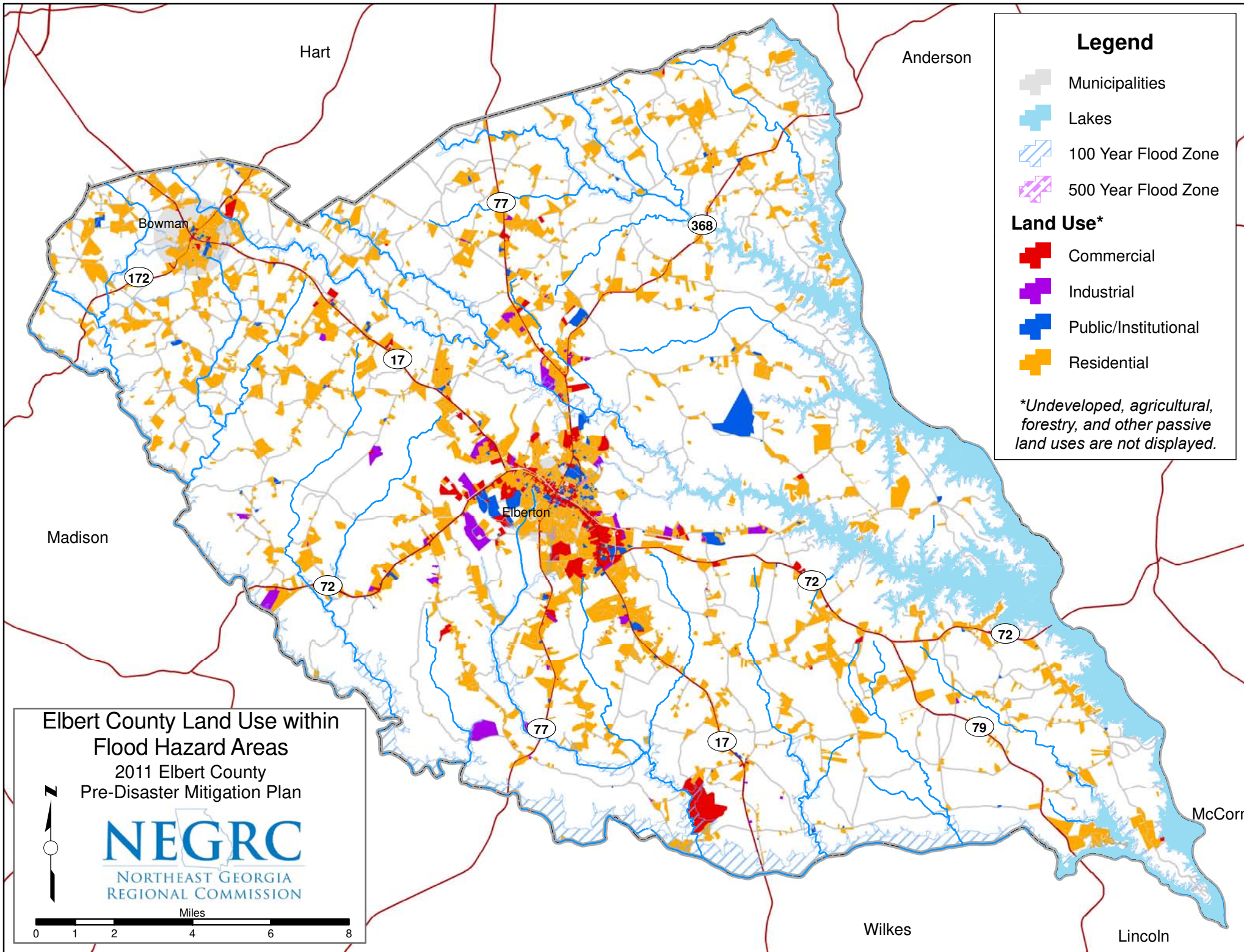
(123)

(77)





(17)

(79)





(145)



**Legend**

-  Municipalities
-  Lakes
-  100 Year Flood Zone
-  500 Year Flood Zone

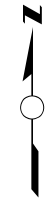
**Land Use\***

-  Commercial
-  Industrial
-  Public/Institutional
-  Residential

*\*Undeveloped, agricultural, forestry, and other passive land uses are not displayed.*

**Elbert County Land Use within Flood Hazard Areas**

2011 Elbert County Pre-Disaster Mitigation Plan



## **I. Winter Storms (Referenced in Chapter 2 – Section 2.3)**

### **A. Description**

#### **Winter Storms:**

Winter storms are characterized by the threat of freezing rain and ice storms. When surface temperatures fall below 32 degrees Fahrenheit, freezing rain develops. Freezing rain glazes surfaces, objects, and vegetation with ices that can cause dangerous conditions. Heavy accumulations of ice on power lines and trees can result in power outages, property damage, and extremely hazardous conditions for motorists and pedestrians. The public is advised on these conditions through winter storm “watches” and “warnings.” A winter storm watch means that severe winter weather may affect your area while a winter storm warning means a winter storm is expected.

Sleet can also be associated with winter storms. It appears as frozen rain drops or ice pellets that bounce after hitting the ground. Unlike ice associated with winter storms, sleet does not accumulate on utility lines or trees. It does, however, result in hazardous driving conditions along roadways.



## **I. Drought (Referenced in Chapter 2 – Section 2.4)**

### **A. Description**

#### **Drought:**

Drought is a hazard caused by the absence of water and/or moisture over an extended period of time. Depending on their duration, droughts are categorized in severity as listed below:

Short Term: 1-3 months  
Intermediate: 4-6 months  
Long Term: > 6 months

Agriculture and the cultivation of crops are particularly threatened by a drought event. The threat of wildfires is also heightened during a period of drought. More generally, any period of drought can affect water quality and availability to communities. Local water restrictions typically go into effect during period of drought.



## I. Wildfires (Referenced in Chapter 2 – Section 2.5)

### A. Description

#### Wildfires:

The uncontrollable spreading of fire through vegetated or forested areas occurs across the United States and is known as a wildfire. Georgia is located in one of the nation's highest danger zones for wildfires, due to the large amount of forested areas. Wildfires are grouped into three different classes:

1. **Surface Fire:** The most common type that burns slowly on the forest floor and damages or kills trees.
2. **Ground Fire:** A fire caused by lightning burning on or below the forest floor.
3. **Crown Fire:** A rapidly spreading fire that spreads by moving across the tops of trees.

Wildfires are typically recognized by dense smoke that covers many miles. Droughts can create conditions suitable for a wildfire and weather conditions (e.g., temperature, humidity, and wind) affect a wildfire's severity. Wildfires result from both human and natural causes. The leading cause is human where people start fires either accidentally or by arson. Lightning that strikes and ignites vegetative fuel is the second leading cause of wildfires.





## **I. Earthquakes (Referenced in Chapter 2 – Section 2.5)**

### **A. Description**

#### **Earthquakes:**

An earthquake is a sudden shaking of the earth caused by a sudden slip on a fault, which results in a release of energy that travels away from the fault surface as seismic waves. Seismic waves are elastic shocks that travel through the earth. Faults slip to release stress that is created as tectonic plates move around the surface of the earth.

There are currently three scales that measure earthquakes: the Richter Magnitude Scale, the Moment Magnitude Scale, and the Modified-Mercalli Intensity Scale.

- The Richter Magnitude Scale is logarithmic and expresses earthquake size as a magnitude using whole numbers and decimal fractions. The Richter Magnitude Scale measures the energy released by an earthquake, not the damage caused by an earthquake. The Richter Magnitude Scale has no theoretical upper limit, however the practical upper limit lies just below 9.0 and 10.0 for local or surface-wave magnitudes and moment magnitudes respectively
- The Moment Magnitude Scale provides the most reliable estimate of the size of an earthquake when the earthquake exceeds 6.0 on the Richter Magnitude Scale. The Moment Magnitude scale is the preferred magnitude scale.
- The Modified-Mercalli Intensity Scale is a measure of the strength of shaking of an earthquake at a specific location and is normally represented in roman numerals. The Modified-Mercalli Intensity Scale ranges from one (I) to twelve (XII) with one (I) meaning that shaking could not be felt and twelve (XII) is total damage

Earthquakes can cause buildings and bridges to collapse, telephone and power lines to fall, and cause fires, explosions, and landslides.

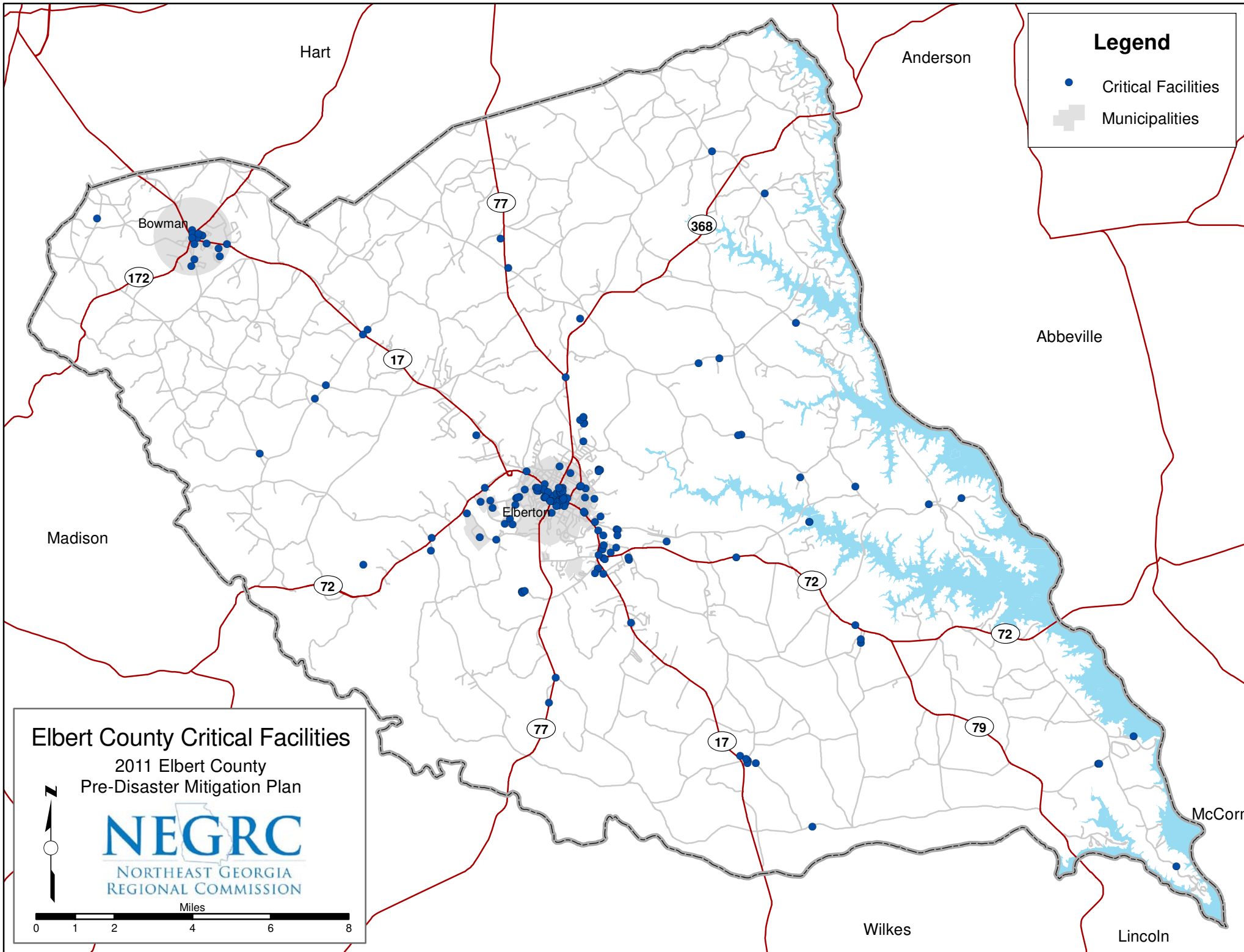


## CRITICAL FACILITIES DATA SPREADSHEET

CF ID	Name	Deciml Degrees Format longitude	Deciml Degrees Format latitude	See Codes and Definitions Tab locmethoID	Address1	Address2	city	state	zip	See Codes and Definitions Tab jurisdiction	flgs	Square feet	No commas or dollar signs value	valueyear	See Codes and Definitions Tab valuationtypeID	Critical Facility Types (Mark all that apply with the word "True".)														See Codes and Definitions Tab other_detail	See Codes and Definitions Tab structuraltypeID	See Codes and Definitions Tab occupancyclassID	See Codes and Definitions Tab facilitytypeID	Do Not Change deleted	
																essential	transportation	lifeline	hpotential	hazmat	important	vulnerable_pop	econ_assets	special_consideration	historic_consideration	other									
001	Amerigas	(null)	(null)	(null)	(null)	(null)	(null)	GA	(null)	(null)	(null)	(null)	(null)	(null)	(null)	FALSE	FALSE	FALSE	FALSE	TRUE	FALSE	FALSE	FALSE	FALSE	FALSE	FALSE	FALSE	FALSE	FALSE	FALSE	(null)	(null)	(null)	(null)	0
002	001 Athens Technical College - Elbert Campus	-82.9000495	34.10872577	5	1317 Athens Tech Dr		Elberton	GA	30635	218	1310	83000	6710202	2011	3	FALSE	FALSE	FALSE	FALSE	FALSE	TRUE	FALSE	FALSE	FALSE	FALSE	FALSE	FALSE	FALSE	FALSE	(null)	(null)	(null)	(null)	0	
003	003 Beaverdam Elementary School	-82.85464866	34.1318778	5	1088 Ruckersville Road		Elberton	GA	30635	217	1310	46513	1219554	2011	3	TRUE	FALSE	FALSE	FALSE	FALSE	FALSE	TRUE	FALSE	FALSE	FALSE	FALSE	FALSE	FALSE	FALSE	(null)	(null)	(null)	(null)	0	
004	004 Bethel East Baptist Church (RC Shelter)	-82.73187172	34.06545501	5	2576 Calhoun Falls Hwy (Hwy 72)		Elberton	GA	30635	217	1310	9253	601973	2011	3	TRUE	FALSE	FALSE	FALSE	FALSE	FALSE	FALSE	FALSE	FALSE	FALSE	FALSE	FALSE	FALSE	FALSE	(null)	(null)	(null)	(null)	0	
005	005 Bi-Lo	-82.84887042	34.1019081	5	709 Lower Heard St		Elberton	GA	30635	218	1310	46181	2074913	2011	3	FALSE	FALSE	FALSE	FALSE	FALSE	TRUE	FALSE	FALSE	FALSE	FALSE	FALSE	FALSE	FALSE	FALSE	(null)	(null)	(null)	(null)	0	
006	006 Blackwell Elementary School	-82.85326776	34.11458427	5	373 Campbell Street		Elberton	GA	30635	218	1310	55355	3002027	2011	3	TRUE	FALSE	FALSE	FALSE	FALSE	FALSE	TRUE	FALSE	FALSE	FALSE	FALSE	FALSE	FALSE	FALSE	(null)	(null)	(null)	(null)	0	
007	007 Board of Education Bus Shop	-82.84843486	34.08307955	5	Highway 17 South		Elberton	GA	30635	217	1310	4872	44248	2011	3	FALSE	FALSE	FALSE	FALSE	FALSE	TRUE	FALSE	FALSE	FALSE	FALSE	FALSE	FALSE	FALSE	FALSE	(null)	(null)	(null)	(null)	0	
008	008 Board of Education Office	-82.87542016	34.11437937	5	50 Laurel Drive		Elberton	GA	30635	218	1310	16338	270113	2011	3	FALSE	FALSE	FALSE	FALSE	FALSE	FALSE	TRUE	FALSE	FALSE	FALSE	FALSE	FALSE	FALSE	FALSE	(null)	(null)	(null)	(null)	0	
009	009 Bobby Brown State Park	-82.58719102	33.97790102	5	2509 Bobby Brown State Park Rd		Elberton	GA	30635	217	1310	5360	467645	2011	3	FALSE	FALSE	FALSE	FALSE	FALSE	FALSE	FALSE	TRUE	FALSE	FALSE	FALSE	FALSE	FALSE	FALSE	(null)	(null)	(null)	(null)	0	
010	010 Bowman Baptist Church	-83.03124762	34.20733419	5	66 West Church Street		Bowman	GA	30624	74	1310	17328	858010	2011	3	FALSE	FALSE	FALSE	FALSE	FALSE	FALSE	TRUE	FALSE	FALSE	FALSE	FALSE	FALSE	FALSE	FALSE	(null)	(null)	(null)	(null)	0	
011	011 Bowman Church of God	-83.01525299	34.20272715	5	476 East Railroad Street		Bowman	GA	30624	74	1310	6197	296308	2011	3	FALSE	FALSE	FALSE	FALSE	FALSE	FALSE	FALSE	FALSE	FALSE	FALSE	FALSE	FALSE	FALSE	FALSE	(null)	(null)	(null)	(null)	0	
012	012 Bowman City Park	-83.01910429	34.20093268	5	363 East Railroad Street		Bowman	GA	30624	74	1310	(null)	15703	2011	3	FALSE	FALSE	FALSE	FALSE	FALSE	FALSE	FALSE	FALSE	FALSE	FALSE	FALSE	FALSE	FALSE	FALSE	(null)	(null)	(null)	(null)	0	
013	013 Bowman City Well and Water System	-83.01861299	34.19815669	5	(null)		Bowman	GA	30624	74	1310	(null)	(null)	(null)	(null)	(null)	FALSE	FALSE	FALSE	TRUE	FALSE	FALSE	FALSE	FALSE	FALSE	FALSE	FALSE	FALSE	FALSE	(null)	(null)	(null)	(null)	0	
014	014 Bowman Community Center	-83.02453228	34.20263559	5	209 East Railroad Street		Bowman	GA	30624	74	1310	4812	378417	2011	3	FALSE	FALSE	FALSE	FALSE	FALSE	FALSE	TRUE	FALSE	FALSE	FALSE	FALSE	FALSE	FALSE	FALSE	(null)	(null)	(null)	(null)	0	
015	015 Bowman Drug Co	-83.03084356	34.20482153	5	2 S Broad St		Bowman	GA	30624	74	1310	1612	19866	2011	3	FALSE	FALSE	FALSE	FALSE	FALSE	FALSE	TRUE	FALSE	FALSE	FALSE	FALSE	FALSE	FALSE	FALSE	(null)	(null)	(null)	(null)	0	
016	016 Bowman Elementary School	-83.02684156	34.20563836	5	86 Adams Circle		Elberton	GA	30635	74	1310	37961	1225816	2011	3	TRUE	FALSE	FALSE	FALSE	FALSE	FALSE	FALSE	TRUE	FALSE	FALSE	FALSE	FALSE	FALSE	FALSE	(null)	(null)	(null)	(null)	0	
017	017 Bowman Head Start	-83.02665425	34.20572219	5	88 Adams Circle		Bowman	GA	30624	74	1310	(null)	(null)	(null)	(null)	(null)	FALSE	FALSE	FALSE	FALSE	FALSE	FALSE	TRUE	FALSE	FALSE	FALSE	FALSE	FALSE	FALSE	(null)	(null)	(null)	(null)	0	
018	018 Bowman Transfer Station	-83.02875447	34.20479329	5	2555 N. Segar St.		Bowman	GA	30624	74	1310	5120	28910	2011	3	FALSE	FALSE	TRUE	FALSE	FALSE	FALSE	FALSE	FALSE	FALSE	FALSE	FALSE	FALSE	FALSE	FALSE	(null)	(null)	(null)	(null)	0	
019	019 Bubba Foods (Bubba Burger)	-82.9001977	34.09574532	5	1208 Progress Boulevard Southwest		Bowman	GA	30635	218	1310	37706	1566949	2011	3	FALSE	FALSE	FALSE	FALSE	TRUE	FALSE	FALSE	FALSE	FALSE	FALSE	FALSE	FALSE	FALSE	FALSE	(null)	(null)	(null)	(null)	0	
020	020 Camp Harmony (RC Shelter)	-82.85715846	34.17741572	5	2063 Harmony Rd		Elberton	GA	30635	217	1310	17570	289511	2011	3	TRUE	FALSE	FALSE	FALSE	FALSE	FALSE	FALSE	FALSE	FALSE	FALSE	FALSE	FALSE	FALSE	FALSE	(null)	(null)	(null)	(null)	0	
021	021 Cell Phone Towers (Various Locations)	(null)	(null)	(null)	(Various Locations)		GA	(null)	(null)	(null)	(null)	(null)	(null)	(null)	(null)	FALSE	FALSE	FALSE	TRUE	FALSE	FALSE	FALSE	FALSE	FALSE	FALSE	FALSE	FALSE	FALSE	(null)	(null)	(null)	(null)	0		
022	022 Chicken Production Facilities (Various Locations)	(null)	(null)	(null)	(Various Locations)		GA	(null)	(null)	(null)	(null)	(null)	(null)	(null)	(null)	FALSE	FALSE	FALSE	FALSE	FALSE	FALSE	FALSE	FALSE	FALSE	FALSE	FALSE	FALSE	FALSE	(null)	(null)	(null)	(null)	0		
023	023 City Fuel Depot	-82.86363094	34.11355863	5	North McIntosh Street		Elberton	GA	30635	218	1310	5760	28910	2011	3	FALSE	FALSE	FALSE	FALSE	FALSE	TRUE	TRUE	FALSE	FALSE	FALSE	FALSE	FALSE	FALSE	(null)	(null)	(null)	(null)	0		
024	024 Colonial Fuel Pipeline	(null)	(null)	(null)	(null)		Elberton	GA	30635	(null)	(null)	(null)	(null)	(null)	(null)	FALSE	FALSE	TRUE	FALSE	FALSE	FALSE	FALSE	FALSE	FALSE	FALSE	FALSE	FALSE	FALSE	(null)	(null)	(null)	(null)	0		
025	025 Comcast 1	-83.03119404	34.19417743	5	168 Rehoboth Rd.		Bowman	GA	30624	74	1310	(null)	(null)	(null)	(null)	FALSE	FALSE	FALSE	TRUE	FALSE	FALSE	FALSE	FALSE	FALSE	FALSE	FALSE	FALSE	FALSE	(null)	(null)	(null)	(null)	0		
026	026 Comcast 2	-82.86270273	34.10766336	5	254 Heard St.		Elberton	GA	30635	218	1310	(null)	(null)	(null)	(null)	FALSE	FALSE	FALSE	FALSE	TRUE	FALSE	FALSE	FALSE	FALSE	FALSE	FALSE	FALSE	FALSE	(null)	(null)	(null)	(null)	0		
027	027 Comcast 3	-82.89281741	34.10961624	5	1219 Cable Tower Cr.		Elberton	GA	30635	217	1310	(null)	(null)	(null)	(null)	FALSE	FALSE	FALSE	FALSE	FALSE	FALSE	FALSE	FALSE	FALSE	FALSE	FALSE	FALSE	FALSE	(null)	(null)	(null)	(null)	0		
028	028 County Fuel Depot	-82.88349598	34.11074821	5	1027 Johnson Drive		GA	(null)	(null)	(null)	(null)	(null)	(null)	(null)	(null)	FALSE	FALSE	FALSE	FALSE	FALSE	FALSE	TRUE	TRUE	FALSE	FALSE	FALSE	FALSE	FALSE	(null)	(null)	(null)	(null)	0		
029	029 Crossroads Alternative Academy	-82.8535775	34.11112769	5	230 West Tate Street		Elberton	GA	30635	218	1310	(null)	(null)	(null)	(null)	TRUE	FALSE	FALSE	FALSE	FALSE	FALSE	FALSE	TRUE	FALSE	FALSE	FALSE	FALSE	FALSE	(null)	(null)	(null)	(null)	0		
030	030 CVS Pharmacy	-82.86221646	34.10892822	5	232 Elbert Street		Elberton	GA	30635	218	1310	10200	499246	2011	3	FALSE	FALSE	FALSE	FALSE	FALSE	FALSE	TRUE	FALSE	FALSE	FALSE	FALSE	FALSE	FALSE	FALSE	(null)	(null)	(null)	(null)	0	
031	031 Deep Creek Baptist Church (Food Bank)	-82.97020195	34.15082465	5	2335 Nickville Road Northwest		Dewey Rose	GA	30634	217	1310	13798	658042	2011	3	FALSE	FALSE	FALSE	FALSE	FALSE	FALSE	FALSE	FALSE	FALSE	FALSE	FALSE	FALSE	FALSE	(null)	(null)	(null)	(null)	0		
032	032 Dewey Rose Baptist Church (RC Shelter)	-82.95194105	34.1718668	5	1923 Pulliam Mill Rd		Dewey Rose	GA	30634	217	1310	26644	1467327	2011	3	TRUE	FALSE	FALSE	FALSE	FALSE	FALSE	FALSE	FALSE	FALSE	FALSE	FALSE	FALSE	FALSE	(null)	(null)	(null)	(null)	0		
033	033 Doves Creek Elementary School	-82.89571806	34.10943112	5	1150 Athens Tech Road		Elberton	GA	30635	218	1310	165939	18134219	2011	3	TRUE	FALSE	FALSE	FALSE	FALSE	FALSE	FALSE	TRUE	FALSE	FALSE	FALSE	FALSE	FALSE	(null)	(null)	(null)	(null)	0		
034	034 Drake Gas Co	-82.83924084	34.09957376	5	1126 Old Middleton Road		Elberton	GA	30635	217	1310	2425	32227	2011	3	FALSE	FALSE	FALSE	FALSE	TRUE	FALSE	FALSE	FALSE	FALSE	FALSE	FALSE	FALSE	FALSE	(null)	(null)	(null)	(null)	0		
035	035 Elba Pipeline 1	-82.77527532	34.0136854	5	2448 Chastain Rd.		Elberton	GA	30635	217	1310	(null)	30392408	2011	3	FALSE	FALSE	TRUE	FALSE	FALSE	FALSE	FALSE	FALSE	FALSE	FALSE	FALSE	FALSE	FALSE	(null)	(null)	(null)	(null)	0		
036	036 Elba Pipeline 2	-82.78559757	34.0898518	5	1783 Calhoun Falls Hwy.		Elberton	GA	30635	217	1310	(null)	(null)	(null)	(null)	FALSE	FALSE	FALSE	TRUE	FALSE	FALSE	FALSE	FALSE	FALSE	FALSE	FALSE	FALSE	FALSE	(null)	(null)	(null)	(null)	0		
037	037 Elba Pipeline 3	-82.80395975	34.16163318	5	2105 Ruckersville Rd.		Elberton	GA	30635	217	1310	(null)	(null)	(null)	(null)	FALSE	FALSE	FALSE	TRUE	FALSE	FALSE	FALSE	FALSE	FALSE	FALSE	FALSE	FALSE	FALSE	(null)	(null)	(null)	(null)	0		
038	038 Elbert Cable Company	-82.8647512	34.11291531	5	234 N. McIntosh St.		Elberton	GA	30635	218	1310	(null)	(null)	(null)	(null)	FALSE	FALSE	FALSE	TRUE	FALSE	FALSE	FALSE	FALSE	FALSE	FALSE	FALSE	FALSE	FALSE	(null)	(null)	(null)	(null)	0		
039	039 Elbert County Airport	-82.81674648	34.09534921	5	1136 Von Trina Drive		Elberton	GA	30635	217	1310	(null)	1461260	2011	3	FALSE	FALSE	TRUE	FALSE	FALSE	FALSE	FALSE	FALSE	FALSE	FALSE	FALSE	FALSE	FALSE	(null)	(null)	(null)	(null)	0		
040	040 Elbert County Animal Control Facility	-82.78571972	34.13522227	5	2160 Hulmes Chapel Road		Elberton	GA	30635	217	1310	2120	107254	2011	3	FALSE	FALSE	FALSE	FALSE	FALSE	FALSE	TRUE	FALSE	FALSE	FALSE	FALSE	FALSE	FALSE	(null)	(null)	(null)	(null)	0		
041	041 Elbert County BOC Administration Offices	-82.87102863	34.1166088																																

# CRITICAL FACILITIES DATA SPREADSHEET

CF ID	Name	Decimal Degrees Format longitude	Decimal Degrees Format latitude	See Codes and Definitions tab locmethodID	Address1	Address2	city	state	zip	See Codes and Definitions Tab jurisdiction	flgs	Square feet area	No commas or dollar signs value	valueyear	See Codes and Definitions tab valuationtypeID	Critical Facility Types (Mark all that apply with the word "True".)												See Codes and Definitions tab other_detail	See Codes and Definitions tab structuraltypeID	See Codes and Definitions tab occupancyclassID	See Codes and Definitions tab facilitytypeID	Do Not Change deleted			
																essential	transportation	lifeline	hazardous	hazardous	hazardous	hazardous	hazardous	hazardous	hazardous	hazardous	hazardous						hazardous	hazardous	hazardous
123	Elberton: Lake Water Intake	-82.75321254	34.10334248	5	(null)	(null)	(null)	GA	(null)	217	1310	(null)	(null)	(null)	(null)	3	FALSE	FALSE	TRUE	FALSE	FALSE	FALSE	FALSE	FALSE	FALSE	FALSE	FALSE	FALSE	FALSE	FALSE	(null)	(null)	15	27	0
124	Elian United Methodist Church (RC Shelter)	-82.77978119	34.01508337	5	2130 Dr George Ward Road	(null)	Elberton	GA	30635	217	1310	1962	80652	2011	3	TRUE	FALSE	FALSE	FALSE	FALSE	FALSE	FALSE	FALSE	FALSE	FALSE	FALSE	FALSE	FALSE	FALSE	(null)	(null)	24	48	0	
125	Elmhurst Cemetary	-82.8602238	34.12003508	5	400 N Oliver Street	(null)	Elberton	GA	(null)	218	1310	(null)	(null)	(null)	(null)	3	TRUE	FALSE	FALSE	FALSE	FALSE	FALSE	FALSE	FALSE	FALSE	FALSE	FALSE	FALSE	TRUE	FALSE	(null)	(null)	24	48	0
126	Falling Creek Elementary School	-82.84725015	34.08454698	5	1019 Falling Creek Circle	(null)	Elberton	GA	30635	217	1310	49315	2567932	2011	3	TRUE	FALSE	FALSE	FALSE	FALSE	FALSE	FALSE	FALSE	FALSE	FALSE	FALSE	FALSE	FALSE	FALSE	(null)	(null)	13	34	0	
127	Family First Healthcare of Northeast Ga	-82.87466049	34.11445374	5	46 Laurel Drive	(null)	Elberton	GA	30635	218	1310	3811	130704	2011	3	FALSE	FALSE	FALSE	FALSE	FALSE	TRUE	FALSE	FALSE	FALSE	FALSE	FALSE	FALSE	FALSE	FALSE	(null)	(null)	9	48	0	
128	Ferriglas, L P	-82.8983291	34.113944	5	Athens Highway	(null)	Elberton	GA	30635	217	1310	(null)	(null)	(null)	(null)	3	FALSE	FALSE	FALSE	FALSE	TRUE	FALSE	FALSE	FALSE	FALSE	FALSE	FALSE	FALSE	FALSE	(null)	(null)	19	48	0	
129	First Baptist Church (RC Shelter)	-82.86596665	34.10898835	5	132 Heard Street	(null)	Elberton	GA	30635	218	1310	31280	2037284	2011	3	TRUE	FALSE	FALSE	FALSE	FALSE	FALSE	FALSE	FALSE	FALSE	FALSE	FALSE	FALSE	TRUE	FALSE	(null)	(null)	24	48	0	
130	First Steps Child Care Center	-82.83204266	34.06495492	5	1638 Washington Highway	(null)	Elberton	GA	30635	217	1310	2670	96645	2011	3	FALSE	FALSE	FALSE	FALSE	FALSE	FALSE	FALSE	FALSE	FALSE	FALSE	FALSE	FALSE	FALSE	FALSE	(null)	(null)	13	48	0	
131	First United Methodist Church (RC Shelter)	-82.86627844	34.10773408	5	118 Thomas St	(null)	Elberton	GA	30635	218	1310	34174	1692806	2011	3	TRUE	FALSE	FALSE	FALSE	FALSE	FALSE	FALSE	FALSE	FALSE	FALSE	FALSE	FALSE	FALSE	TRUE	FALSE	(null)	(null)	24	48	0
132	Fortsonia Baptist Church (RC Shelter)	-82.78235197	34.01627801	5	2616 Washington Hwy.	(null)	Elberton	GA	30635	217	1310	6586	397153	2011	3	TRUE	FALSE	FALSE	FALSE	FALSE	FALSE	FALSE	FALSE	FALSE	FALSE	FALSE	FALSE	FALSE	FALSE	(null)	(null)	24	48	0	
133	Granite Industry (Various Locations)	(null)	(null)	(null)	(Various Locations)	(null)	(null)	GA	(null)	(null)	(null)	(null)	(null)	(null)	(null)	(null)	FALSE	FALSE	FALSE	FALSE	FALSE	FALSE	FALSE	FALSE	FALSE	FALSE	FALSE	FALSE	FALSE	(null)	(null)	(null)	(null)	0	
134	Greenway Oil Co	-82.86338098	34.11157305	5	205 East Railroad Street	(null)	Elberton	GA	30635	218	1310	(null)	(null)	(null)	(null)	3	FALSE	FALSE	FALSE	FALSE	FALSE	FALSE	FALSE	FALSE	FALSE	FALSE	FALSE	FALSE	FALSE	(null)	(null)	19	48	0	
135	Headmont Nursing Home	-82.72932699	34.06036052	5	1043 Long Street North	(null)	Elberton	GA	30635	217	1310	14659	525215	2011	3	FALSE	FALSE	FALSE	FALSE	FALSE	FALSE	FALSE	FALSE	FALSE	FALSE	FALSE	FALSE	FALSE	FALSE	(null)	(null)	35	48	0	
136	Ingles Grocery Store	-82.84499588	34.09713367	5	901 Lower Heard St.	(null)	Elberton	GA	30635	217	1310	94540	6702692	2011	3	FALSE	FALSE	FALSE	FALSE	FALSE	TRUE	FALSE	FALSE	FALSE	FALSE	FALSE	FALSE	FALSE	FALSE	(null)	(null)	19	48	0	
137	Jim-Ree African American Museum	-82.86874768	34.10957382	5	24 South Oliver Street	(null)	Elberton	GA	30635	218	1310	4992	53481	2011	3	FALSE	FALSE	FALSE	FALSE	FALSE	FALSE	FALSE	FALSE	FALSE	FALSE	FALSE	FALSE	FALSE	TRUE	FALSE	(null)	(null)	10	48	0
138	Kids Under Construction Child Center	-83.0299092	34.19680818	5	332 Rehoboth Road	(null)	Bowman	GA	30624	74	1310	5184	240787	2011	3	FALSE	FALSE	FALSE	FALSE	FALSE	FALSE	TRUE	FALSE	FALSE	FALSE	FALSE	FALSE	FALSE	FALSE	(null)	(null)	13	48	0	
139	Lighthouse Church (Food Bank)	-82.84495672	34.08290865	5	1333 Washington Highway	(null)	GA	(null)	(null)	217	1310	(null)	(null)	(null)	(null)	3	FALSE	FALSE	FALSE	FALSE	FALSE	TRUE	FALSE	FALSE	FALSE	FALSE	FALSE	FALSE	FALSE	(null)	(null)	24	48	0	
140	Maddens Pharmacy	-82.87136978	34.11339464	5	101 College Avenue	(null)	Elberton	GA	30635	218	1310	3404	208216	2011	3	FALSE	FALSE	FALSE	FALSE	FALSE	TRUE	FALSE	FALSE	FALSE	FALSE	FALSE	FALSE	FALSE	FALSE	(null)	(null)	19	48	0	
141	Magnolia Estates Assisted Living Facility	-82.86995802	34.11289287	5	68 College Avenue	(null)	Elberton	GA	30635	218	1310	28551	1730057	2011	3	FALSE	FALSE	FALSE	FALSE	FALSE	FALSE	FALSE	FALSE	FALSE	FALSE	FALSE	FALSE	FALSE	TRUE	FALSE	(null)	(null)	35	48	0
142	McWilliams Park	-82.83333303	34.08828076	5	1041 Mobley Hill Road	(null)	Elberton	GA	30635	217	1310	18694	1382695	2011	3	FALSE	FALSE	FALSE	FALSE	FALSE	FALSE	TRUE	FALSE	FALSE	FALSE	FALSE	FALSE	FALSE	FALSE	(null)	(null)	10	48	0	
143	Medical Center	-82.87189198	34.11386445	5	109 College Avenue	(null)	Elberton	GA	30635	218	1310	15108	1302137	2011	3	FALSE	FALSE	FALSE	FALSE	FALSE	TRUE	FALSE	FALSE	FALSE	FALSE	FALSE	FALSE	FALSE	FALSE	(null)	(null)	8	48	0	
144	MedLink	-82.86523643	34.10790365	5	206 East Church Street	(null)	Elberton	GA	30635	218	1310	6939	606678	2011	3	FALSE	FALSE	FALSE	FALSE	FALSE	TRUE	FALSE	FALSE	FALSE	FALSE	FALSE	FALSE	FALSE	FALSE	(null)	(null)	9	48	0	
145	Nancy Hart Cabin (Nancy Hart State Park)	-82.74958237	33.99037031	5	River Road	(null)	Elberton	GA	30635	217	1310	432	2500	2011	3	FALSE	FALSE	FALSE	FALSE	FALSE	FALSE	FALSE	FALSE	FALSE	FALSE	FALSE	FALSE	FALSE	TRUE	FALSE	(null)	(null)	10	48	0
146	Nancy Hart Nursing Center	-82.77905145	34.01358065	5	2117 Dr. George Ward Dr	(null)	Elberton	GA	30635	217	1310	15140	524652	2011	3	FALSE	FALSE	FALSE	FALSE	FALSE	FALSE	TRUE	FALSE	FALSE	FALSE	FALSE	FALSE	FALSE	FALSE	(null)	(null)	35	48	0	
147	National Guard Armory	-82.84491917	34.08862684	5	1031 Calhoun Falls Hwy.	(null)	Elberton	GA	30635	217	1310	17278	811334	2011	3	FALSE	FALSE	FALSE	FALSE	FALSE	TRUE	FALSE	FALSE	FALSE	FALSE	FALSE	FALSE	FALSE	FALSE	(null)	(null)	15	48	0	
148	Parham Oil Co	-82.85405614	34.10582598	5	551 Elbert Street	(null)	Elberton	GA	30635	218	1310	2661	28736	2011	3	FALSE	FALSE	FALSE	FALSE	TRUE	FALSE	FALSE	FALSE	FALSE	FALSE	FALSE	FALSE	FALSE	FALSE	(null)	(null)	19	48	0	
149	Petersburg Towers	-82.844793	34.0934702	5	1050 Petersburg Road	(null)	Elberton	GA	30635	218	1310	20441	1901156	2011	3	FALSE	FALSE	FALSE	FALSE	FALSE	FALSE	TRUE	FALSE	FALSE	FALSE	FALSE	FALSE	FALSE	FALSE	(null)	(null)	35	48	0	
150	Pilgrim's Pride	-82.83863855	34.09916367	5	1129 Old Middleton Road	(null)	Elberton	GA	30635	217	1310	182726	4879153	2011	3	FALSE	FALSE	FALSE	FALSE	FALSE	TRUE	FALSE	FALSE	FALSE	FALSE	FALSE	FALSE	FALSE	TRUE	FALSE	(null)	(null)	19	48	0
151	Pine-der-Rosa Campground	-82.75755922	34.1200747	5	2561 Hulmes Chapel Road	(null)	Elberton	GA	30635	217	1310	(null)	28697	2011	3	FALSE	FALSE	FALSE	FALSE	FALSE	FALSE	FALSE	FALSE	FALSE	FALSE	FALSE	FALSE	FALSE	FALSE	(null)	(null)	10	48	0	
152	Plantation Fuel Pipeline	-82.95183101	34.08457866	5	(null)	(null)	GA	(null)	(null)	217	1310	(null)	(null)	(null)	(null)	3	FALSE	FALSE	TRUE	FALSE	FALSE	FALSE	FALSE	FALSE	FALSE	FALSE	FALSE	FALSE	FALSE	(null)	(null)	15	48	0	
153	Pleasant Grove Baptist Church (RC Shelter)	-83.07370563	34.2112063	5	2537 Pleasant Grove Road	(null)	Bowman	GA	30624	217	1310	33618	1723584	2011	3	TRUE	FALSE	FALSE	FALSE	FALSE	FALSE	FALSE	FALSE	FALSE	FALSE	FALSE	FALSE	FALSE	FALSE	(null)	(null)	24	48	0	
154	Primary Fiber Optic Line	(null)	(null)	(null)	(null)	(null)	GA	(null)	(null)	(null)	(null)	(null)	(null)	(null)	(null)	(null)	FALSE	FALSE	TRUE	FALSE	FALSE	FALSE	FALSE	FALSE	FALSE	FALSE	FALSE	FALSE	(null)	(null)	(null)	(null)	0		
155	Ray's Grocery Store	-83.03105543	34.2045405	5	14 South Broad Street(Residential)*	(null)	Bowman	GA	30624	74	1310	2018	28318	2011	3	FALSE	FALSE	FALSE	FALSE	FALSE	TRUE	FALSE	FALSE	FALSE	FALSE	FALSE	FALSE	FALSE	FALSE	(null)	(null)	1	48	0	
156	Richard B. Russell Dam Facility	-82.6070343	34.02585924	5	4144 Russell Dam Drive	(null)	Elberton	GA	30635	217	1310	(null)	400000000	2011	3	FALSE	FALSE	FALSE	TRUE	TRUE	FALSE	FALSE	FALSE	FALSE	FALSE	FALSE	FALSE	FALSE	FALSE	(null)	(null)	15	48	0	
157	Richard B. Russell State Park (RC Shelter)	-82.76075348	34.17733845	5	2650 Russell State Park Drive	(null)	Elberton	GA	30635	217	1310	(null)	8064601	2011	3	TRUE	FALSE	FALSE	FALSE	FALSE	FALSE	FALSE	FALSE	FALSE	FALSE	FALSE	FALSE	FALSE	TRUE	FALSE	(null)	(null)	10	48	0
158	Rock Gym	-82.87112962	34.11092156	5	45 Forest Ave	(null)	Elberton	GA	30635	218	1310	12432	581988	2011	3	FALSE	FALSE	FALSE	FALSE	FALSE	FALSE	FALSE	FALSE	FALSE	FALSE	FALSE	FALSE	FALSE	FALSE	(null)	(null)	10	48	0	
159	Spring Valley Health Care Center	-82.88906267	34.10074976	5	651 Rhode Drive	(null)	Elberton	GA	30635	218	1310	17977	609506	2011	3	FALSE	FALSE	FALSE	FALSE	FALSE	FALSE	FALSE	TRUE	FALSE	FALSE	FALSE	FALSE	FALSE	FALSE	(null)	(null)	9	48	0	
160	Steven H _Cemetary	-82.70006785	34.1107364	5	3140 Stephen Heard Drive	(null)	GA	(null)	(null)	217	1310	(null)	(null)	(null)	(null)	(null)	FALSE	FALSE	FALSE	FALSE	FALSE	FALSE	FALSE	FALSE	FALSE	FALSE	FALSE	FALSE	TRUE	FALSE	(null)	(null)	24	48	0
161	Tucker Cemetary	-82.68568001	34.11320987	5	Dan Tucker Cem Dr	(null)	Elberton	GA	(null)	217	1310	(null)	(null)	(null)	(null)	(null)	FALSE	FALSE	FALSE	FALSE	FALSE	FALSE	FALSE	FALSE	FALSE	FALSE	FALSE	FALSE	TRUE	FALSE	(null)	(null)			



**Legend**

- Critical Facilities
- Municipalities

**Elbert County Critical Facilities**  
2011 Elbert County  
Pre-Disaster Mitigation Plan

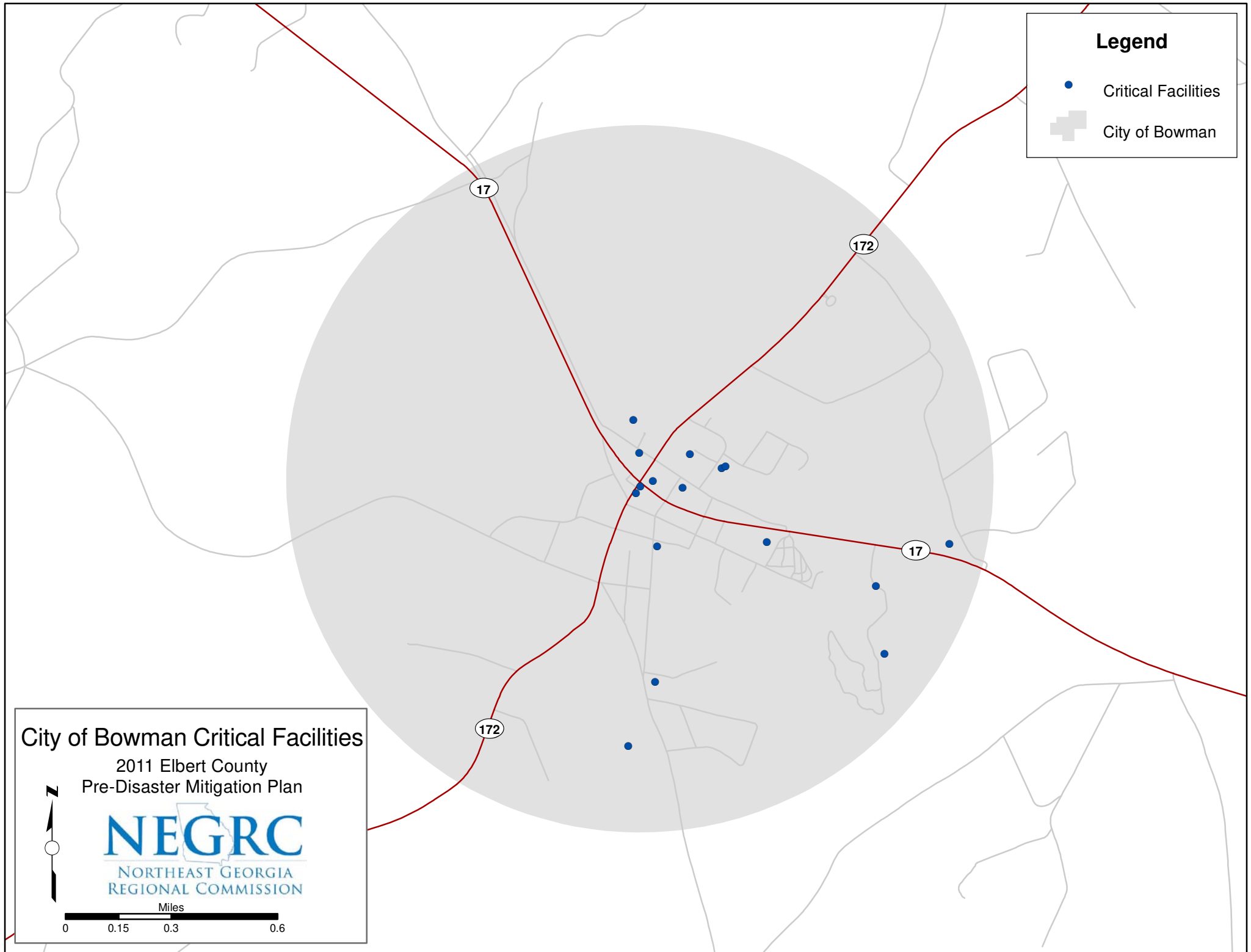
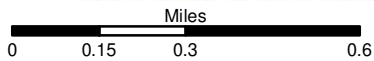
Miles  
0 1 2 4 6 8

**Legend**

- Critical Facilities
- ⊕ City of Bowman

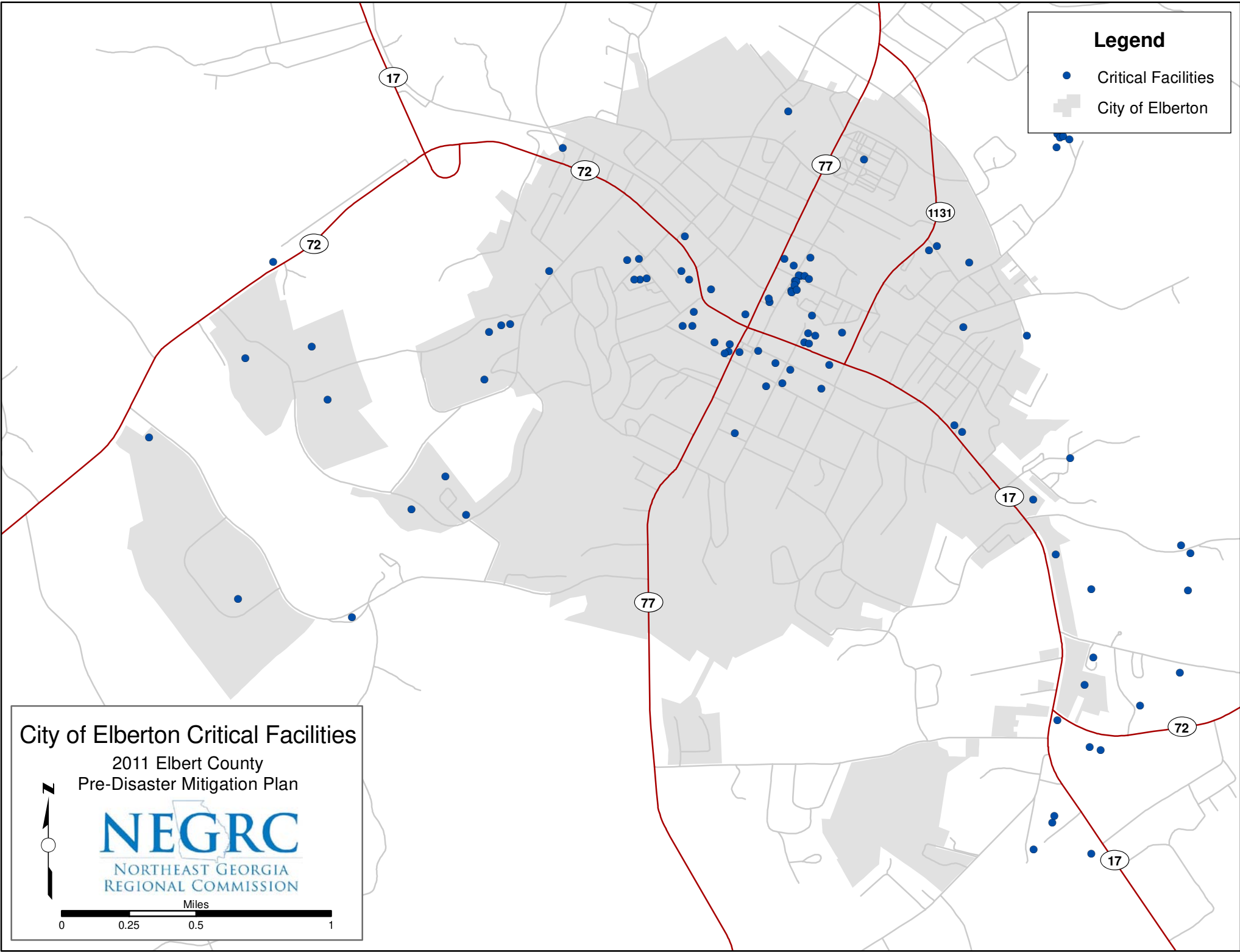
**City of Bowman Critical Facilities**

2011 Elbert County  
Pre-Disaster Mitigation Plan



**Legend**

- Critical Facilities
- City of Elberton



**City of Elberton Critical Facilities**

2011 Elbert County  
Pre-Disaster Mitigation Plan

