



12 Broadridge Lane  
Lutherville, MD 21093  
410-252-8717  
Fax: 410-560-0067  
www.artsonstage.org

Thank you for downloading the Study Guide to go along with the performance presented by Arts On Stage. Please direct any questions or correspondence (letters to performers from staff and/or students) to Arts On Stage. Make sure you note what performance and we will make sure they get into the right hands.

Contact Information:

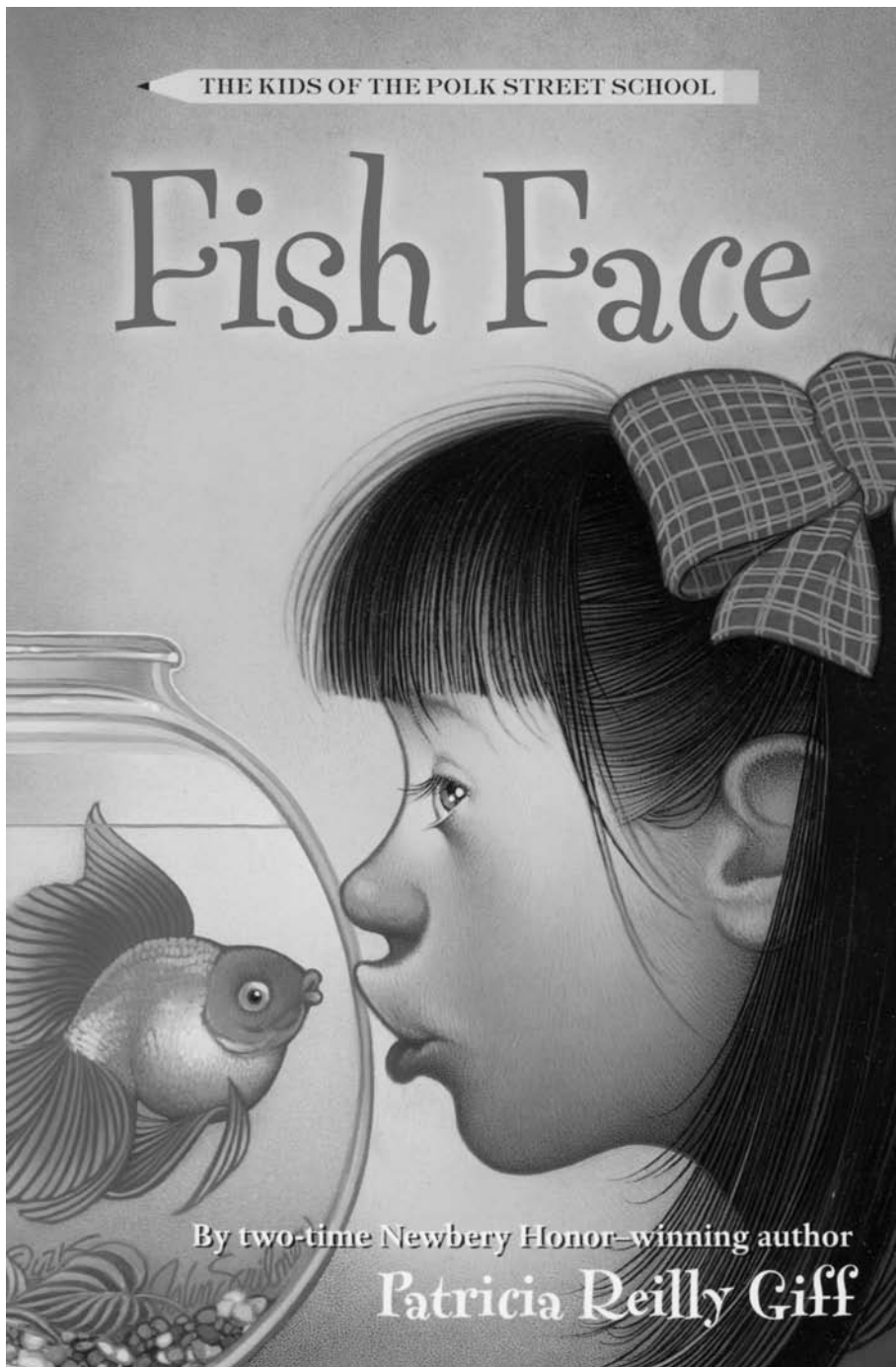
email: [artsonstage@artsonstage.org](mailto:artsonstage@artsonstage.org)

phone: 410-252-8717

fax: 410-560-0067

mail: 12 Broadridge Lane, Lutherville, MD 21093

***Presenting Live Professional Theatre Field Trips & Workshops for Students***



### Table of Contents

Teacher Information:  
 What Happens in  
**Fish Face** .....Page 2  
 Face the Page .....Page 3  
 Face the Problem .....Page 4  
 Face the Truth .....Page 5  
 Face the Music .....Page 6  
 Face the Stage .....Page 7  
 Face to Face with  
 ArtsPower .....Page 8

# ArtsPower

NATIONAL TOURING THEATRE

Gary W. Blackman  
 Mark A. Blackman  
**Executive Producers**

Greg Gunning  
**Artistic Director**

### **Fish Face**

Based on the book **FISH FACE** by Patricia Reilly Giff with illustrations by Blanche Sims and cover illustration by Joanne Scribner. Published by Yearling, an imprint of Random House Children's Books, a division of Random House, New York, NY. Text copyright © 1984 by Patricia Reilly Giff. Presented under an exclusive agreement. All rights reserved.

Direction, Adaptation and Lyrics by  
 Greg Gunning

Music and Orchestrations by  
 Richard DeRosa

Incidental Music by  
 Ron Drotos

Costume Design & Construction by  
 Fred Sorrentino

Set Construction by  
 Tom Carroll Scenic

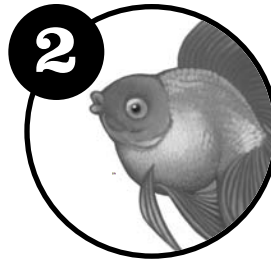
### **Fish Face**

Study Buddy  
 © 2007

Written by Micaela Robb-McGrath  
 Edited by Rosalind M. Flynn  
 Designed by Cowles Graphic Design

**A one-act musical based on the book by Patricia Reilly Giff**  
 Please photocopy any or all of the following pages to distribute to students.

ArtsPower 271 Grove Avenue, Bldg. A Verona, NJ 07044



# Fish Face

Reproducible Student Activity Page

## What Happens in *Fish Face*?



To help students understand the action of the play, read this plot summary to them. The main characters' names appear in boldface type.

**Emily Arrow** is going to be perfect this year at the Polk Street School. Well, maybe just practically perfect. Emily sometimes gets in trouble for talking or being late, so she hopes Uni, her unicorn good luck charm, is going to help her be perfect. But when a new kid joins her class, all of Emily's goals are ruined.



**Dawn Tiffanie Bosco** seems stuck up and snobby when **Ms. Rooney** introduces her to the students in Room 113. Emily is determined to be friends with her so they can play together and make fish faces, just like Emily does with her best friend, **Richard Best**, also known as "Beast." Then Emily notices that Uni is missing and she begins to have a lot of bad luck. Emily and Beast believe that Dawn is the thief and they set out to prove it. With the help of substitute teacher Mrs. Miller, Emily learns that some things are not always what they seem to be.

### RESOURCES

Here is a list of the books that make up The Kids of the "Polk Street School" Series:

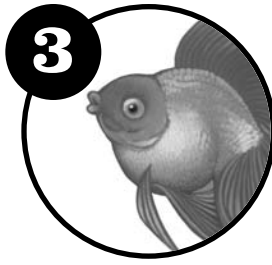
- The Beast in Ms. Rooney's Room
- The Candy Corn Contest
- December Secrets
- In the Dinosaur's Paw
- The Valentine Star
- Lazy Lions, Lucky Lambs
- Snaggle Doodles
- Purple Climbing Days
- Say "Cheese"
- Sunny-Side Up
- Pickle Puss
- Beast and the Halloween Horror
- Emily Arrow Promises to Do Better This Year
- Monster Rabbit Runs Amuck!
- Wake Up, Emily, It's Mother's Day

For more information on these books, visit:  
[www.randomhouse.com/features/patriciareillygiff/books.htm](http://www.randomhouse.com/features/patriciareillygiff/books.htm)

### Teacher Information

This study guide is designed to help you and your students prepare for, enjoy, and discuss ArtsPower's one-act musical play ***Fish Face***. This guide contains background information and cross-curricular activities to complete both before and after the performance.





# Fish Face

Reproducible Student Activity Page

## Face the Page



### The Author

Patricia Reilly Giff made the first fish face. She wrote the book that ArtsPower made into a musical. From the moment Mrs. Giff began to read, she knew she wanted to be a writer. To Mrs. Giff, writing is breathing. She has written more than 60 children's books including "The Kids of the Polk Street School" series and the "Polka Dot Private Eye" books.

To learn more about Patricia Reilly Giff, visit <http://www.randomhouse.com/features/patriciareillygiff/>

### Changing the Page for the Stage

The musical **Fish Face** is based on Patricia Reilly Giff's book. The term "based on" means that the book provides the story for the musical. Some characters and events remain the same, but there are some changes and additions.

The changes and additions that turn a book into a play are made by the theatre company, ArtsPower National Touring Theatre:

- ◆ The **playwright** writes the lines and lyrics.
- ◆ The **composer** writes the music.
- ◆ The **orchestrator** adapts the composer's music so that it can be performed by an orchestra.
- ◆ The **actors** audition for roles in the play, and memorize dialogue, lyrics, and choreography (movements and dance).
- ◆ The **designers** create sets, costumes, and lighting.
- ◆ The **director** rehearses the actors and makes artistic decisions about the production.
- ◆ The **stage manager** oversees all of the "backstage" elements of the production and also drives the ArtsPower van.
- ◆ The **producers** manage all aspects of ArtsPower's production, raise money, set and maintain budgets, and manage the entire organization.

### Learning Activity

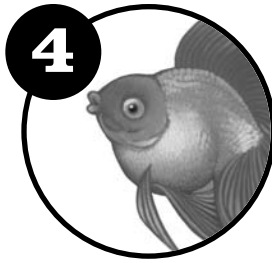
#### Page and Stage

Read the book **Fish Face** and then watch for these changes in the musical:

1. In the musical, Dawn misspells Ms. Rooney's name on her birthday card.  
In the novel, \_\_\_\_\_  
\_\_\_\_\_.
2. In the novel, Emily's two friends are named Beast and Jill.  
In the musical, \_\_\_\_\_  
\_\_\_\_\_.
3. In the novel, Emily never tells Dawn the truth about her middle name.  
In the musical, \_\_\_\_\_  
\_\_\_\_\_.

#### After the performance, discuss:

- ◆ Why do you think ArtsPower National Touring Theatre may have made those changes to the book's characters and events?
- ◆ How else did the work of the theatre company change the book's story to present it on the stage?



# Fish Face

Reproducible Student Activity Page

## Face the Problem

The audience learns the story of **Fish Face** through the words – called lines of dialogue in the theatre – that actors speak. In **Fish Face**, Emily’s lines reveal her problems. Read each of Emily’s lines below. Then pretend you are Emily’s friend. Give her some advice on how she might think about each problem. Use the space below Emily’s lines and write your own lines of dialogue.



### EMILY

Ever since she took Uni! I lost the race! – flunked the math quiz! – always in trouble! And now I won’t pass my reading test tomorrow!

---

---

---

Beast, we’ve got to think! If that new kid really did steal Uni, how am I ever going to prove it?

---

---

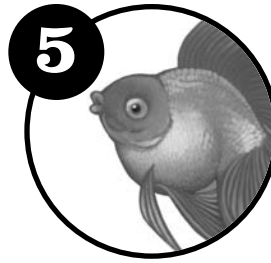
---

And I was going to be perfect . . . guess “practically perfect” people would have seen that it’s hard being the new kid.

---

---

---



# Fish Face

Reproducible Student Activity Page



## Face the Truth

Sometimes, people act like they are feeling fine when they are not. In ***Fish Face***, the character Dawn pretends that she is fine being the new kid in school.

Read each of the lines Dawn speaks. What she says is not exactly what she feels. Use the space below Dawn's lines and write what you think she may really be thinking.

### DAWN (to Emily)

Oh, I can already tell we're going to be good friends.

---

---

---

### DAWN (to Emily)

Oh, I hope you don't think I'm bragging. I just think the more we know about each other, the better friends we can be.

---

---

---

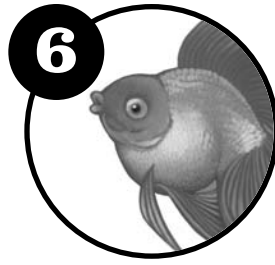
### DAWN (writing a letter)

Dear Karen—How are things back in Florida? Everything here is really great. The kids here all call me the “new kid”; and they all really like me.

---

---

---



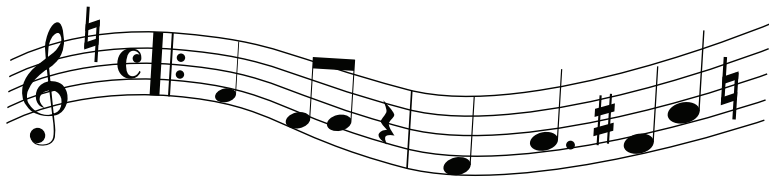
# Fish Face

Reproducible Student Activity Page

## Face the Music

Because ***Fish Face*** is a musical, the story is told in words and songs. The music and songs tell the audience about the characters, plot, and setting. They also tell you about characters' inner feelings.

**Lyrics** are the words of songs. What do these lyrics that Emily and Dawn sing tell you about their feelings?



**Dawn:** *I'm the new kid.*

**Emily:** *Practically perfect.*

**Dawn:** *Really just scared. Don't they see?*

**Emily:** *I thought I would be.*

**Dawn:** *The new kid.*

**Emily:** *Practically perfect.*

**Dawn:** *If they'd just get to know me.*

**Emily:** *Guess that's just not me.*

**Dawn:** *For what I did, guess they'll always be mad.*

**Emily:** *For what she did, she should really feel bad.*

**Dawn:** *Until then...*

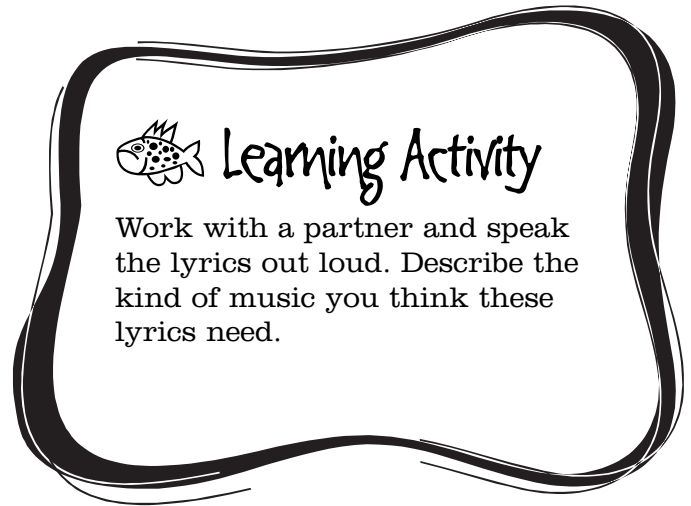
**Emily:** *But really...*

**Dawn:** *I remain lonely...*

**Emily:** *Who's always...*

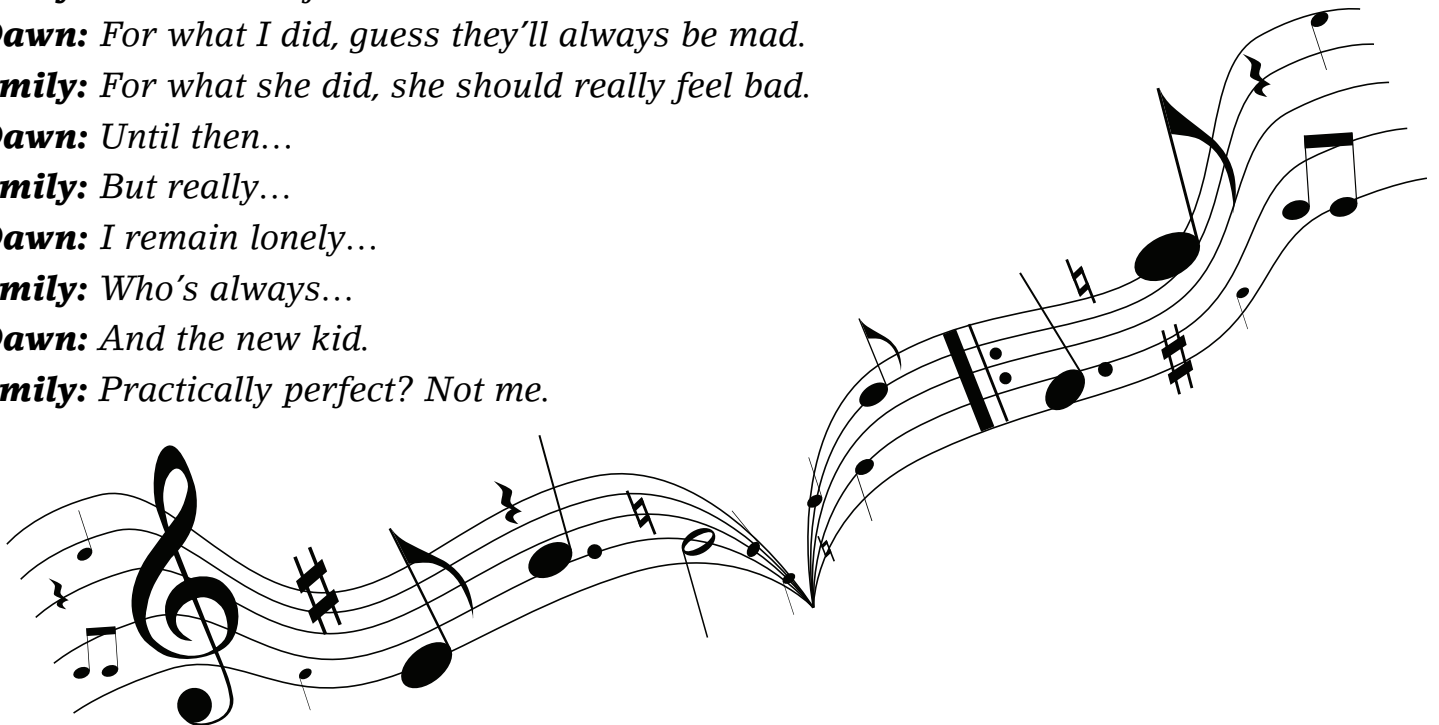
**Dawn:** *And the new kid.*

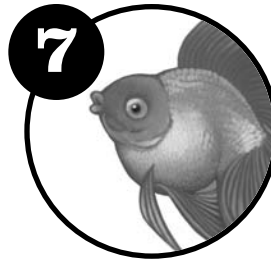
**Emily:** *Practically perfect? Not me.*



### Learning Activity

Work with a partner and speak the lyrics out loud. Describe the kind of music you think these lyrics need.





# Fish Face

Reproducible Student Activity Page

## Face the Stage

### The Audience

Any play or musical is just a rehearsal until there is an audience. How do you play a part in ***Fish Face***?

- ◆ Watch closely. Reading or writing takes your focus away from the performance.
- ◆ Become quiet the moment you see an actor or hear the music begin.
- ◆ Laugh or applaud if you enjoy the play.
- ◆ Remember that you and the actors are in the same room.
- ◆ Talking, whispering, or making noise during the performance makes it hard for actors and singers to do their best.
- ◆ Help other audience members with your quiet attention.

### The actors and a stage manager:

- ◆ present performances all over the United States.
- ◆ pack the set, costumes, and recording equipment in a van.
- ◆ set up, change, and pack the set.
- ◆ take care of costumes and props—objects such as backpacks, paper lunch bags, and unicorns handled by actors.
- ◆ stay in hotels when they travel.
- ◆ sometimes present 10 performances in 10 different places in a week.

