

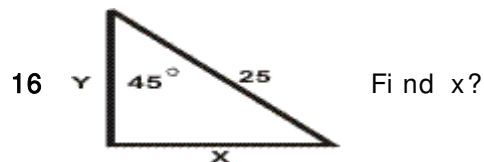
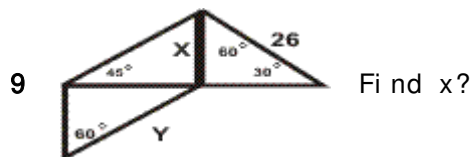
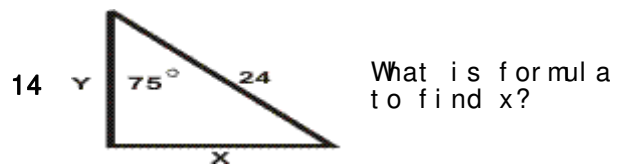
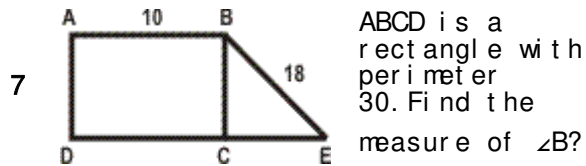
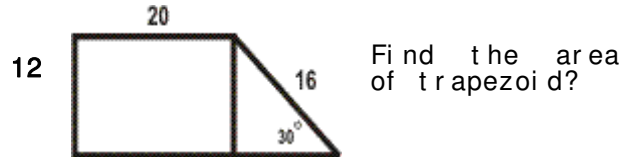
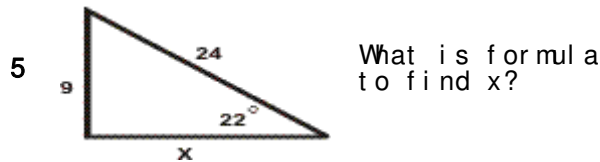
Quiz: Trigonometric Word Problems

1 A 42 m ladder leans against a wall. The bottom of the ladder is 16 m from the wall. What angle does the ladder make with the ground?

8 A kite is 33 m above the ground. The kite string makes an angle of 38° with the ground. Assuming that the string is taut, how much string is out?

3 A balloonist records altitude as 1208 meters, the angle of depression of the landing spot to be 17° . How far is the landing spot from a point on the ground vertically?

10 An 8 meter ladder makes an angle of 62° with the ground. How far is the bottom of the ladder from the base of the building?



Circle # Correct	0	1	2	3	4	5	6	7	8	9	10
Percentage Score	0%	10%	20%	30%	40%	50%	60%	70%	80%	90%	100%