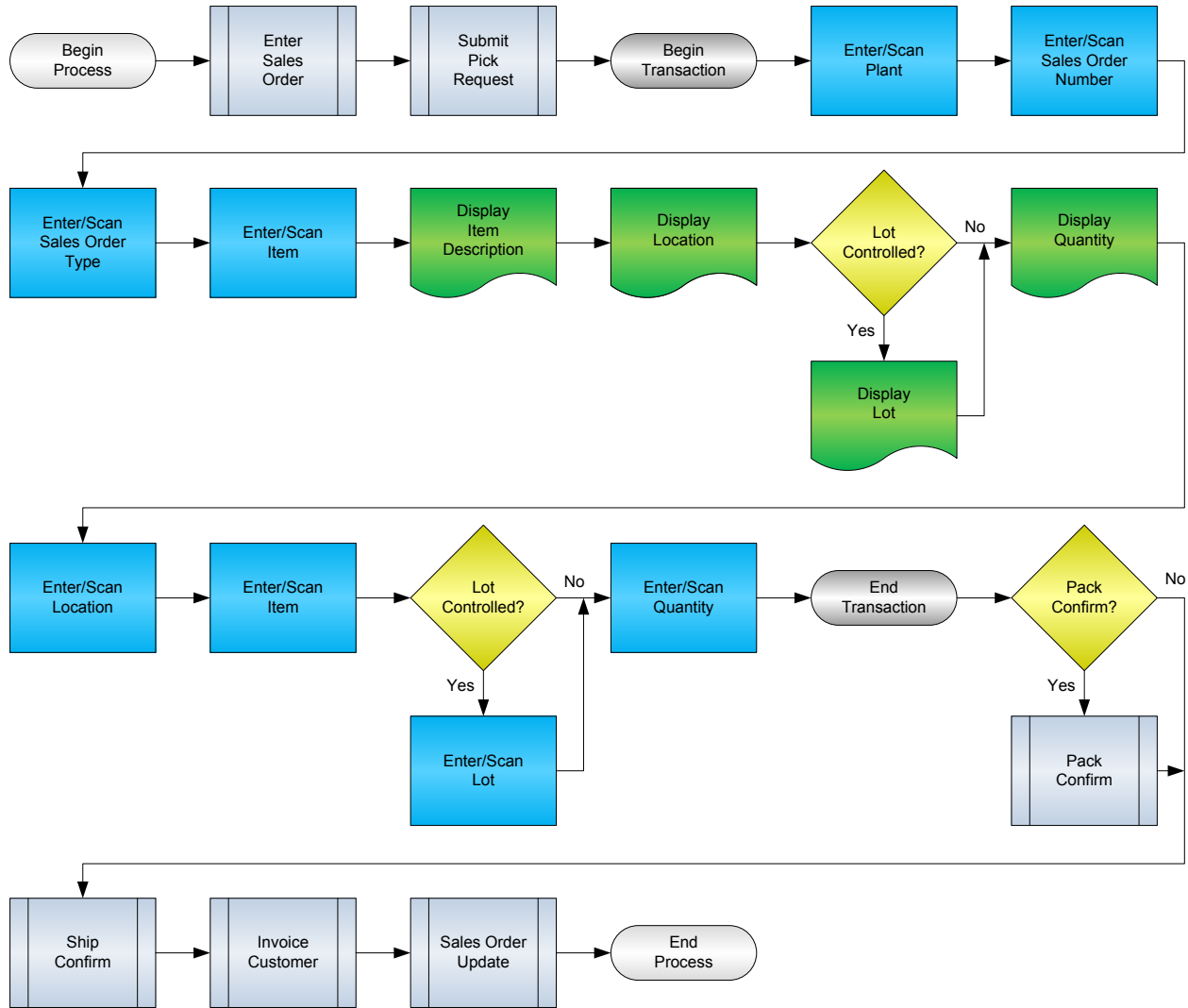


Warehouse Pick Confirm By Sales Order



RFgen Software
1101 Investment Boulevard, Suite 250
El Dorado Hills, CA 95762
888-426-3472

License Agreement

All information contained in this document is the intellectual property of RFgen Software, a division of the DataMAX Software Group, Inc. This document may not be published, nor used without the prior written consent of RFgen Software. Use of the RFgen Software Open Source code is at all times subject to the DataMAX Software Group Open Source Licensing Agreement, which must be accepted at the time the source code is installed on your computer system. For your convenience, a text copy of the DataMAX Software Group Open Source Licensing Agreement is also loaded (and may be printed from) your RFgen-based system.

Requirements

- RFgen Version 5.0 or later
- RFgen JD Edwards Integration Suite

Table of Contents

WAREHOUSE PICK CONFIRM BY SALES ORDER.....	1
FWHCS0100 – PICK CONFIRM BY SALES ORDER.....	3
✓ VALIDATIONS	4
✓ EDITS	4
⇨ FUNCTION KEYS	4
ENTERPRISEONE PROGRAMS – REFERENCE.....	5
ENTERPRISEONE WAREHOUSE PICK CONFIRMATIONS: P4617	5
AFFECTED RFGEN FORMS AND TRANSACTION MACROS.....	6
SETUP AN RFGEN MENU	6
RFGEN INPUT REQUIREMENTS	8
JD EDWARDS PROCESSING OPTION SETTINGS.....	8
EXECUTION PROCEDURES	9
OVERALL TEST CASE RESULTS	11

FWHCS0100 – Pick Confirm by Sales Order



This Pick transaction transfers an item from the warehouse location to the Shipping location.

The following conditions apply to the RFgen implementation for the Pick Confirm by Item within the EnterpriseOne environment.

Note: any of these parameters may be easily adjusted to meet the unique requirements of your company.

✓ Validations

Prompt	Table	Field
Branch Plant	F4611	R2MCU
Sales Order	F4611	R2DOCO
Item Number	F4611	R2LLITM
Location	F4611	R2FLOC

✓ Edits

Condition	Table
Default Branch Plant	F40095

↔ Function Keys

Key	Function
F1	Search Data for Current Field
F2	Refresh the Current Screen Display
F3	
F4	Exits Transaction

EnterpriseOne Programs – Reference

Application Name(s)	Code	Table
Warehouse Pick Confirmations	P4617	F4611

EnterpriseOne Warehouse Pick Confirmations: P4617

Branch/Plant

Task Number *

Order Number * *

Item Number *

Phase *

Status

Suggestion Printed

Task	Trip	Item Number	From Location	To Location	Quantity	UM	Dual Quantity	Dual UOM	Branch/Plant	N
26	1.000	2440	4.A .3	D. .	12	EA	12	EA	27	

How JDEdwards® Processing Option affects RFgen

This documentation explains which of the JDE Processing Options are used by RFgen and how the red highlighted Proc.Options effect the RFgen script.

Affected RFgen Forms and Transaction Macros

Description	Form Name	Transaction Macro Name
Put Away by PO	FWHPP0100	TWHPC0100
Put Away by Item	FWHPI0100	TWHPC0100
Pick Confirm by Item	FWHCI0100	TWHPC0100
Pick Confirm by SO	FWHCS0100	TWHPC0100
Pick Confirm by Pick Number	FWHCS0101	TWHPC0100
Pick Confirm by Task Trip	FWHCS0102	TWHPC0100
Replenishment by Item	FWHRI0100	TWHPC0100

Setup an RFgen Menu

To implement an RFgen Form using JDE Processing Options in an RFgen Menu the JDE Version needs to be specified.

Enter the Form name, followed by a Space. Enter “-Vers=” and the JDE Version.

Form/Menu	Description to Display
FWHCS0100 -Pgm=P4617 -Vers=ZJDE0002	Pick Confirm by SO

Processing Options: P4617 Warehouse Confirmations

---- <-- Display -->

0001 1 1> Program Mode --> [1]

RFgen uses this value to filter on Warehouse Type (R2TYFL)

0002 1 2> Phase Control Code --> [2]

RFgen uses this value to filter on Phase (R2PHAS)

0003 1 3> Default Suggestion Status --> [340]

RFgen uses to filter on next Status (R2PSTB). If empty RFgen defaults to 340.

0004 1 4> Shipping Location --> [1]

If "1" RFgen allows to overwrite the Location.

---- <-- Prompts -->

0005 2 1> Location Verification --> [1]

0006 2 2> Auto Inquire --> []

---- <-- Move Tags -->

0007 3 1> Move Tag --> []

0008 3 2> Bar Code --> []

0009 3 3> Unit of Measure --> []

0010 3 4> Item/Location Quantity to Be Printed on --> []

0011 3 5> Enter the number of Duplicate Copies to --> []

0012 3 6> DREAM Writer version of the move tags to --> [XJDE0001]

Specified version is passed over to the related Business Function.

---- <-- Picking -->

0013 4 1> Override Next Status for Sales Order Lin --> [0]

0014 4 2> Override Next Status for Sales Order Lin --> []

0015 4 3> Warning/Error Display for Ship Ascending --> []

0016 4 4> Version of Pack Confirmation (P4216) --> []

---- <-- Bulk Pick -->

0017 5 1> Bulk Detail Report --> []

0018 5 2> Bulk Pick Detail Report (R46210) Version --> []

---- <-- Carton Det -->

0019 6 1> Carton Detail Information --> []

0020 6 2> Version of Carton Reorganization (P4620) --> []

Test Script Description: WH Pick Confirm by SO (P4617)

RFgen Input Requirements

Before you begin testing, ensure, for the combination of branch/plant(s) and item(s) you will be testing, that the following is setup in EnterpriseOne or PeopleSoft World.

- a. Branch/Plant
- b. Sales Order
- c. Item Number
- d. Location

JD Edwards Processing Option Settings

Enter the Processing Option values, which correspond, to the version you selected for testing.

JDE Version: ZJDE0001 _____

Tab	Processing Option Description	Value
Display	<ol style="list-style-type: none"> a. Program Mode b. Phase Control Code c. Default Suggestion Status d. Shipping Location 	
Move Tags	<ol style="list-style-type: none"> a. DREAM Writer version of the move tags to be used for the printer overrides 	

Execution Procedures

ID	Test Case	Expected Result	Pass	Fail
1	Type in a valid Branch/Plant _____ Press the ENTER key	RFGEN will validate and accept the branch/plant entered		
2	Type in a valid SO# _____ Press the ENTER key	RFGEN will validate and accept the sales order number entered		
3	Type in a valid 'Type' _____ Press the ENTER key	RFGEN will validate and accept the document type entered		
4	Type in a valid Item# _____ Press the ENTER key	RFGEN will validate and accept the item entered; and display the item description, suggested location, and pick quantity		
5	For confirmation, type in a valid Locn ____ Press the ENTER key	RFGEN will validate and accept the location entered		
6	For confirmation, type in a valid Item# ____ Press the ENTER key	RFGEN will validate and accept the item entered		
7	For confirmation, type in a valid Qty ____ Press the ENTER key	RFGEN will validate and accept the quantity entered		
8	Type in an invalid Branch/Plant _____ Press the ENTER key	RFGEN will validate the branch/plant entered and display an error message – the field will continue to error out until corrected		
9	Type in an invalid SO# _____ Press the ENTER key	RFGEN will validate and display an error message – the field will continue to error out until corrected		
10	Type in an invalid 'Type' _____ Press the ENTER key	RFGEN will validate and display an error message – the field will continue to error out until corrected		
11	Type in an invalid Item# _____ Press the ENTER key	RFGEN will validate and display an error message – the field will continue to error out until corrected		
12	For confirmation, type in a invalid Locn _____ Press the ENTER key	RFGEN will validate and display an error message – the field will continue to error out until corrected		
13	For confirmation, type in an invalid Item# _____ Press the ENTER key	RFGEN will validate and display an error message – the field will continue to error out until corrected		
14	For confirmation, type in and invalid Qty _____	RFGEN will validate and display an error message – the field will		

	Press the ENTER key	continue to error out until corrected		
15	Press the “F1” key with the cursor in the branch/plant field	RFGEN will display a list of branch/plants		
16	Press the “F1” key with the cursor in the branch/plant field to select and return a branch/plant	RFGEN will display a list of branch/plants and when selected, the branch/plant will be returned		
17	Press the “F1” key with the cursor in the SO# field	RFGEN will display a list of sales order number		
18	Press the “F1” key with the cursor in the SO# field to select and return a sales order number	RFGEN will display a list of sales order numbers and when selected, the sales order will be returned		
19	Press the “F1” key with the cursor in the Type field	RFGEN will display a list of document types		
20	Press the “F1” key with the cursor in the Type field to select and return a document type	RFGEN will display a list of document types and when selected, the document type will be returned		
21	Press the “F1” key with the cursor in the Item# field	RFGEN will display a list of item numbers		
22	Press the “F1” key with the cursor in the Item# field to select and return an item number	RFGEN will display a list of item numbers and when selected, the item number will be returned		
23	If the Program Mode processing option is set to “2”	RFGEN will perform pick confirmation		
24	If the Phase Control Code processing option is set to “2”	RFGEN will perform two-phase pick confirmation		
25	If the Default Suggestion Status processing option is set to “340” (suggestions printed)	RFGEN will perform pick confirmation		
26	If the Shipping Location processing option is set to “1”	RFGEN will allow location override during pick confirmation		
27	If the “DREAM Writer version of the move tags to be used for the printer overrides” processing option is activated (contains a version)	RFGEN will retrieve (from the processing option) and use the specified version during pick confirmation		
28	At the RFGEN “Enter to Accept Prompt” the transaction is added to EnterpriseOne	Confirm the Pick by SO Confirmation results		

Overall Test Case Results

Pass/Fail	
Tester/Date	
RE-Tester/Date	

Actual Results	
-----------------------	--

Comments	
-----------------	--