



**Sale ends December 21, 2012  
(or while supplies last)**

**The Expediter, LLC.**

6667 White Drive  
West Palm Beach, FL 33407  
(Phone) 561-863-2220 • 800-330-1800  
(Fax) 561-863-2250 • 888-330-1888

PRSTD STD  
U.S. POSTAGE  
**PAID**  
W. PALM BEACH, FL  
PERMIT NO. 544

**For more information,  
call 561-863-2220 or visit [www.expediter.com](http://www.expediter.com)**

**561-863-2220 • 800-330-1800**

**561-863-2250 • 888-330-1888**

**[order@expediter.com](mailto:order@expediter.com)**

**part #2938-K**

**6" Oval LED Light**

Stop, tail, and turn. Includes 7 diode sealed light with 3 wire leads and rubber mounting grommet.

- Peterson Piranha 420KR-3



Part #	Price	Qty
2938-K	\$4.75	

**part #5951I**

**Roof Top Steel Cargo Basket**

- 48" x 37-1/2" x 4"
- Universal fit mounts to round, square & most factory OEM racks
- Custom fairing to help deflect wind
- Stylish black powder coat finish resists rust & corrosion
- Mounting hardware included
- 2 piece steel construction



Part #	Price	Qty
5951I	\$110.00	

**part #30755**

**Bolt-on Swivel Jack**

Bolt-on Swivel  
Zinc Finish  
Sidewind  
6" Poly Wheel  
Capacity: 1,200 lbs  
Travel: 10"  
Fulton Part #TJ1200



Part #30755	Price	Qty
Qty 1-24	\$23.50	
Qty 25-71	\$21.50	
Qty 72+	\$19.90	

Company Name  P.O. #

Shipping Address

City  State  Zip

Phone #

Credit Card #  Expires

V-Code  Mailing Zip Code

**Note:**

---



---



---

**THE EXPEDITER**

email: [order@expediter.com](mailto:order@expediter.com)  
tel: **561-863-2220 • 800-330-1800**  
fax: **561-863-2250 • 888-330-1888**

**part #8045  
Sport Ramp**

Constructed of durable, rust-resistant aluminum. Rungs are riveted for added strength, spaced 8" apart. Full width top plate with non-marring, vinyl backing provides added stability and smooth transition between ramp and loading surface.

- 45" x 69"
- 1,500 lbs

limited quantities



**FULTON**  
Performance Products, Inc.

Part #	Price	Qty
8045	\$99.00	

**part #10088  
Inner Tube**

350 x 4

limited quantities



Part #	Price	Qty
10088	\$3.00	

**part #10087  
Inner Tube**

530 x 12

*\*only 1 available*

limited quantities



Part #	Price	Qty
10087	\$5.99	

**part #10197  
Wheel**

*\*only 3 available*

Rim Size: 15" x 10"  
Bolt Pattern: 8 on 8"  
Positive Offset: 1.12"  
Pilot Hole: 6"  
Capacity: 5,000 lbs



**CARLISLE**

Part #	Price	Qty
10197	\$25.00	

**part #20027  
Trailer Connector Loop**

7 Pole Trailer connector loop with vehicle and trailer ends. For easy hook-up of 5th wheel or gooseneck trailers. Durable plastic connectors, 7 ft. lead reaches almost anywhere, 7 wires (3) 12 gauge (4) 14 gauge. Same as Tow Ready # 118664.



**DRAW-TITE**

Part #	Price	Qty
20027	\$24.00	

**part #3675  
Chain Binder**

1/4" - 5/16" chain  
2,600 lbs

limited quantities



Part #	Price	Qty
3675	\$13.50	

**part #30874  
Pipe-Mount Swivel Jack**

Zinc finish; Weld-on  
Topwind  
Capacity: 2,000 lbs  
Base: Foot  
Travel: 15"  
Measurements:  
16.50" (retracted)  
31.50" (extended)  
5.50" (clearance)  
Tube Diameter:  
2.00" (inner)  
2.25" (outer)



Part #	Price	Qty
30874	\$18.20	

**part #18023  
20 AMP Inline Fuseholder**

12 AWG wire (AGC fuse not included)

limited quantities



**DRAW-TITE**

Part #	Price	Qty
18023	\$0.75	

**part #30873-Z  
Weld-on Swivel Jack**

Zinc Plated; Round Tube;  
Swivel Bracket  
Topwind  
Capacity: 2,000 lbs  
Base: Foot  
Travel: 15"



Part #	Price	Qty
30873-Z	\$15.99	

**Note:**

Company Name  P.O. #

Shipping Address

City  State  Zip

Phone #

Credit Card #  Expires

V-Code  Mailing Zip Code

**THE EXPEDITER**

email: [order@expediter.com](mailto:order@expediter.com)  
tel: 561-863-2220 • 800-330-1800  
fax: 561-863-2250 • 888-330-1888

**part #30829**  
**Ultimate Jack**

Adjustable A-frame allows jack to be dropped to lowest point before cranking.  
2,000 lbs Capacity  
Topwind  
14" Travel  
Adjustable A-Frame  
No Foot



Part #	Price	Qty
30829	\$20.85	

**part #30850**  
**3K Sidewind Jack**

Sidewind  
No Mount  
3,000 lbs Capacity  
Painted Finish  
Travel: 13.75"  
Measurements:  
21.00" (retracted)  
34.75" (extended)



limited quantities



Part #	Price	Qty
30850	\$13.00	

**Replacement Power Head**

Replacement Power Head for H&H Barker Power Jack. Mounts to 2" OD tube with set screws. Self grounding, single wire hook-up.

**part #30862 - 2500# without light**  
**part #30863 - 3500# with light**

limited quantities



Part #	Price	Qty
30862	\$25.00	
30863	\$30.00	

**part #30860**  
**Electric Jack**

Ideal use w/cargo & travel trailers

- Durable black powder coat finish on outer tube
- Zinc finish inner tube with removable sand foot
- 18" travel height
- LED lights for easy night hookup
- Durable hardened steel gears for years of use
- Crank handle for manual override in case of power loss
- Easy hookup to 12 volt battery on front of trailer
- 3,500 lbs. Capacity



Part #	Price	Qty
30860	\$92.50	

**part #30867-B**  
**Electric Jack**

12V  
Black Moter Case  
3,500 lbs. Lifting Capacity  
Dropleg Foot Pad  
2-1/4" Post  
Level  
Crank Thru  
Nite Lite  
Auto Shutoff  
Acme Screw  
18" Travel



Part #	Price	Qty
30867-B	\$107.50	

**part #30867-W**  
**Electric Jack**

12V  
White Motor Case  
3,500 lbs. Lifting Capacity  
Dropleg Foot Pad  
2-1/4" Post  
Level  
Crank Thru  
Nite Lite  
Auto Shutoff  
Acme Screw  
18" Travel



Part #	Price	Qty
30867-W	\$107.50	

**part #82303**  
**Fold-down Trailer Stand w/Wheel**

Provides 15" of ground clearance  
Fits tongues up to 3" wide by 3"

limited quantities



Part #	Price	Qty
82303	\$9.99	

**part #80145**  
**Coupler**

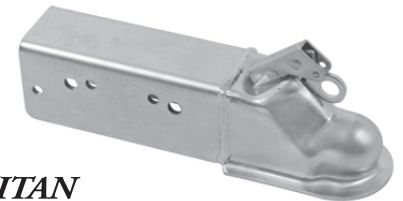
2-5/16" Ball  
3' Tongue Width  
Forged  
Class IV  
12,500 lbs Capacity  
Painted



Part #	Price	Qty
80145	\$45.00	

**part #4853100**  
**Bolt-On Coupler**

2-5/16" Ball  
3" Wide Channel  
Bolt-on Installation  
21,000 lbs Capacity  
Durable Steel Construction  
Zinc Plated



Part #	Price	Qty
4853100	\$77.10	

Company Name  P.O. #

Shipping Address

City  State  Zip

Phone #

Credit Card #  Expires

V-Code  Mailing Zip Code

**Note:**

\_\_\_\_\_

\_\_\_\_\_

\_\_\_\_\_

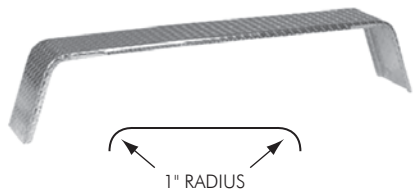
**THE EXPEDITER**

email: [order@expediter.com](mailto:order@expediter.com)  
tel: 561-863-2220 • 800-330-1800  
fax: 561-863-2250 • 888-330-1888

**part #2654**

**Fender**

- Tread Plate - Square Bend
- Fits 15" & 16" Tire
- Width: 10"
- Length: 76"
- Height: 17"
- Material: Steel Tread Plate

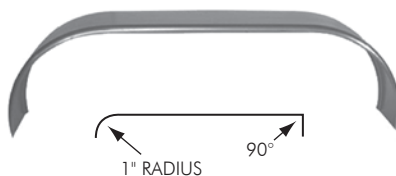


Part #	Price	Qty
2654	\$45.75	

**part #2111**

**Fender**

- Tandem Axle, Straight Style
- Fits 13" & 14" Tire
- Width: 9"
- Length: 66"
- Height: 19"
- Material: 16 GA. CR

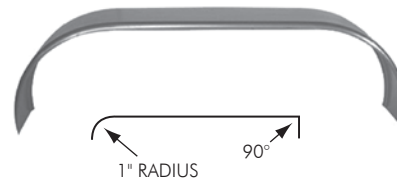


Part #	Price	Qty
2111	\$16.85	

**part #2112**

**Fender**

- Tandem Axle, Straight Style
- Fits 15" & 16" Tire
- Width: 9"
- Length: 72"
- Height: 20-1/2"
- Material: 16 GA. CR

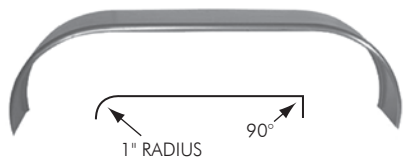


Part #	Price	Qty
2112	\$16.85	

**part #2114**

**Fender**

- Tandem Axle, Straight Style
- Fits 15" & 16" Tire
- Width: 10-3/4"
- Length: 72"
- Height: 20-1/2"
- Material: 16 GA. CR

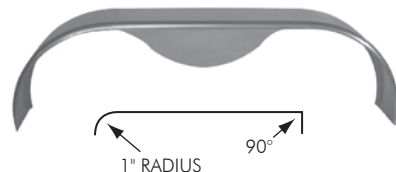


Part #	Price	Qty
2114	\$22.00	

**part #2121**

**Fender**

- Tandem Fender, Tear Drop Style
- Fits 13" & 14" Tire
- Width: 9"
- Length: 66"
- Height: 19"
- Material: 16 GA. CR

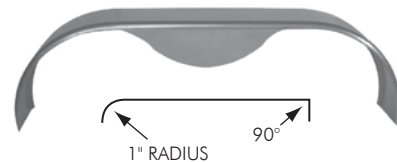


Part #	Price	Qty
2121	\$26.75	

**part #2122**

**Fender**

- Tandem Fender, Tear Drop Style
- Fits 15" & 16" Tire
- Width: 9"
- Length: 72"
- Height: 20-1/2"
- Material: 16 GA. CR

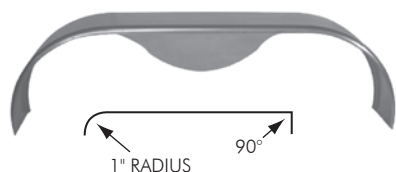


Part #	Price	Qty
2122	\$29.53	

**part #2124**

**Fender**

- Tandem Fender, Tear Drop Style
- Fits 15" & 16" Tire
- Width: 10-3/4"
- Length: 72"
- Height: 20-1/2"
- Material: 16 GA. CR



Part #	Price	Qty
2124	\$29.95	

**part #8540100**

**Tie Down Transom**

- 2 pcs. 1-3/4" x 4'. 1,000 lbs capacity each transom marine tie downs with cam buckle.
- Coated Steel Hooks



HIGHLAND Part #	Price	Qty
8540100	\$4.99	

**part #8541100**

**Tie Down Transom**

- One 1-3/4" x 16' marine grade tie-down with cam buckle. 1,500 lbs capacity.
- Coated Steel Hooks



HIGHLAND Part #	Price	Qty
8541100	\$3.99	

**Note:**

Company Name  P.O. #

Shipping Address

City  State  Zip

Phone #

Credit Card #  Expires

V-Code  Mailing Zip Code

**THE EXPEDITER**

email: [order@expediter.com](mailto:order@expediter.com)  
 tel: 561-863-2220 • 800-330-1800  
 fax: 561-863-2250 • 888-330-1888



**part #2498**  
**Universal Coupler Lock**  
 Universal trailer coupler lock, fits most 1-7/8", 2" & 2-5/16" couplers.



Part #	Price	Qty
2498	\$10.00	

**part #90510**  
**Trailer Wheel Lock**  
 • Heavy-duty  
 • Hardened steel construction with case hardened steelrod.  
 • Prevent wheel rotation



Part #	Price	Qty
90510	\$45.00	

**part #TWL100**  
**Trimax Wheel Lock**  
 • Fits 10" to 18" wheels  
 • Extremely visible deterrent  
 • Easy installation. Includes all tools and complete instructions  
 • Heavy guage steel disc covers lug nuts to prevent tire removal  
 • Clamps tight to tire for added security  
 • Rugged epoxy powder coat finish prevents rust



Part #	Price	Qty
TWL100	\$138.50	

**part #G39**  
**Coupler Lock**  
 For 2" Bulldog Couplers



Part #	Price	Qty
G39	\$15.00	

**part #G43**  
**Actuator Lock**  
 For 2" Atwood Actuator



Part #	Price	Qty
G43	\$15.00	

**part #G44**  
**Coupler Lock**  
 2" UFP C60 Series Coupler and A60 Series Surge Brake Actuator



Part #	Price	Qty
G44	\$15.00	

**part #G46**  
**Coupler Lock**  
 1-7/8", 2" and 2-5/16" Croft & Wallace Forge Forged Couplers



Part #	Price	Qty
G46	\$15.00	

**part #3091002**  
**Surface Mount Taillight**  
 Stop, Turn, Tail, Backup, Surface Mount, Taillight 91 Series, 8-5/8" x 4-5/8" x 2".



Part #3091002	Price	Qty
Qty 1-49	\$1.25	
Qty 50+	\$0.99	

**part #8644-100**  
**1/2" Split Wire Loom**  
 • 100' roll  
 • 1/2" Spiral Cut Slewing



Part #	Price	Qty
8644-100	\$14.00	

Company Name  P.O. #

Shipping Address

City  State  Zip

Phone #

Credit Card #  Expires

V-Code  Mailing Zip Code

**Note:**

---



---



---

**THE EXPEDITER**  
 email: order@expediter.com  
 tel: 561-863-2220 • 800-330-1800  
 fax: 561-863-2250 • 888-330-1888

**part #HPB5040101**  
**Fold-Away Coupler Kit**

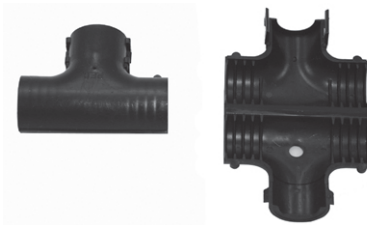
Bolt-on models. Standard 600 hour clear zinc finish. Chain retainer prevents safety chains from dragging yet allows free movement during towing. Pivot restricted to 165 degrees to prevent damage to side marker lights. Provides 20" additional clearance for trailer storage.

Fits Tube Size: 3 x 4  
Trailer GVW: 5,000 lbs  
34" long  
Zinc



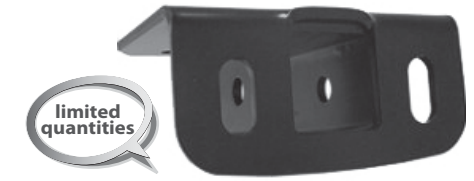
Part #	Price	Qty
HPB5040101	\$65.00	

**part #2019**  
**Split Loom Tee**  
For 1/2" Split Wire Loom



Part #	Price	Qty
2019	\$0.50	

**part #80458**  
**Step Bumper Hitch Box**  
Class II; Step Bumper Receiver; 2" Square;  
Universal Fit: 3,500 lbs GTW; 350 lbs TW;  
Black Finish.



Part #	Price	Qty
80458	\$14.99	

**Cushion Ball Mounts**

These ball mounts feature two heavy-duty polyurethane cushions to reduce the "slams" and "bangs" associated with trailer towing during starting, stopping and rough highways. Helps to protect towing vehicle's driveline, hitch assembly and trailer contents. Cushioned ball mounts act as a shock absorber and fits most 2" receiver hitches.

**part #80420 - 2" drop**

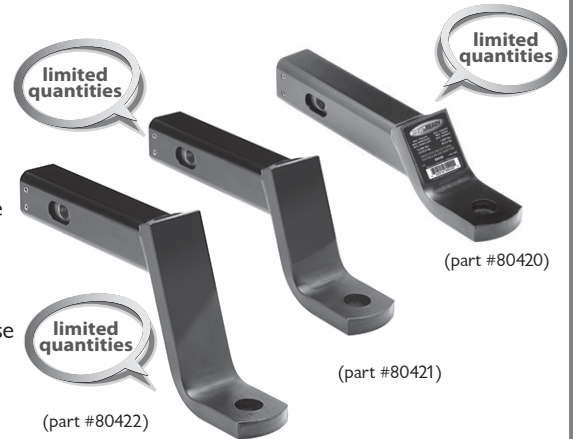
- 10,000 lbs. GTW
- 1" Ball Hole, 9-3/8" Length, 3/4" Rise

**part #80421 - 4" drop**

- 10,000 lbs. GTW
- 1" Ball Hole, 9-7/8" Length, 2-3/4" Rise

**part #80422 - 6" drop**

- 10,000 lbs. GTW
- 1" Ball Hole, 10-5/8" Length, 4-3/4" Rise



Part #	Price	Qty
80420	\$21.99	

Part #	Price	Qty
80421	\$22.99	

Part #	Price	Qty
80422	\$25.99	

**part #72844**  
**Stainless Steel Trailer Ball**

- Ball Size: 2-5/16"
- Shank Dia.: 1"
- Shank Length: 2-1/8"
- Capacity: 6,000 lbs
- Finish: Stainless



Part #	Price	Qty
72844	\$9.99	

**part #69250**  
**Ball Mount**  
Class II Ball Mount  
2.25" Rise, 2.8" Drop, 1.25" Square



Part #	Price	Qty
69250	\$5.00	

**part #I332**  
**Tail Light Box**  
Steel box for 6" oval grommet mounted tail light and 2" round grommet mounted side marker



Part #	Price	Qty
I332	\$4.90	

**Note:**

\_\_\_\_\_  
\_\_\_\_\_  
\_\_\_\_\_

Company Name  P.O. #   
Shipping Address   
City  State  Zip   
Phone #   
Credit Card #  Expires   
V-Code  Mailing Zip Code

**THE EXPEDITER**

email: [order@expediter.com](mailto:order@expediter.com)  
tel: 561-863-2220 • 800-330-1800  
fax: 561-863-2250 • 888-330-1888

**Marker Light Kit**

**part #2633-K** ~ (amber)

2" Sealed Amber Side

Marker Clearance

w/Grommet & Plug

**part #2638-K** ~ (red)

2" Sealed Red Side

Marker Clearance

w/Grommet & Plug



\*Fits bracket #1324

Part #	Price	Qty
2633-K	\$1.50	
2638-K	\$1.50	

**part #2648-K**

**Taillight Kit**

Tail, Stop & Turn with Grommet and Plug



Part #	Price	Qty
2648-K	\$2.99	

**Light**

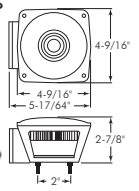
**part #2640** ~ (LH)

Stop, turn, tail, rear reflex, side marker, side reflex, and license light.

**part #2641** ~ (RH)

Stop, turn, tail, rear reflex, side marker and side reflex.

- Mounts on 2" centers & includes mounting hardware.
- Grounds through 1/4" mounting studs.



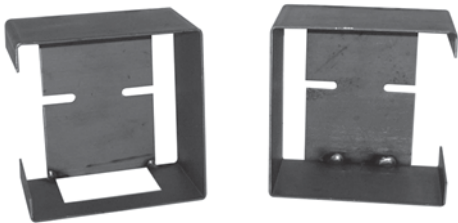
Part #	Price	Qty
2640	\$2.15	
2641	\$1.99	

**Tail Light Protector**

**part #I328** ~ (LH)

**part #I329** ~ (RH)

Steel; Fits lights up to 5-1/4" x 4-9/16" x 2-7/8"



Part #	Price	Qty
I328	\$2.95	
I329	\$2.95	

**I2" Electric Brake (6K)**

**part #I23105**

Left Hand 12 x 2" / 5 Bolt Mount

**part #I23106**

Right Hand 12 x 2" / 5 Bolt Mount



Part #	Price	Qty
I23105	\$32.88	
I23106	\$32.88	

**I2" Electric Brake (7K)**

**part #I23180**

Left Hand 12 x 2" / 5 Bolt Mount

**part #I23181**

Right Hand 12 x 2" / 5 Bolt Mount



Part #	Price	Qty
I23180	\$47.54	
I23181	\$47.54	

**10" Electric Brake**

**part #I23026**

Left Hand 10 x 2-1/4" / 4 Bolt Mount

**part #I23027**

Right Hand 10 x 2-1/4" / 4 Bolt Mount



Part #	Price	Qty
I23026	\$24.98	
I23027	\$24.98	

**part #I313**

**Weld-on Bracket**

Weld-on bracket for stud mount side marker lights. Dimensions: 1/8" x 1-1/2" x 2-1/2". Punched for 1/4" stud mount light.



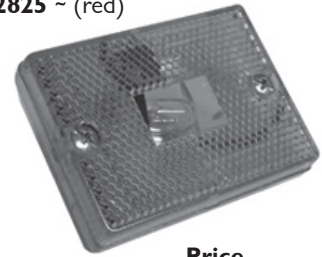
Part #	Price	Qty
I313	\$0.35	

**Marker Light Kit**

Marker light, stud mount, clear base means one light can be used for side and front/rear. marker

**part #2824** ~ (amber)

**part #2825** ~ (red)



Part #	Price	Qty
2824	\$0.75	
2825	\$0.75	

Company Name  P.O. #

Shipping Address

City  State  Zip

Phone #

Credit Card #  Expires

V-Code  Mailing Zip Code

**Note:**

\_\_\_\_\_

\_\_\_\_\_

\_\_\_\_\_

**THE EXPEDITER**

email: [order@expediter.com](mailto:order@expediter.com)  
 tel: 561-863-2220 • 800-330-1800  
 fax: 561-863-2250 • 888-330-1888

Call us, or check manufacturers catalogs or websites for additional applications for these part numbers. Ball mounts are included with Class I and Class II hitches. Class III, IV and V do **NOT** include ball mounts. While supplies last.



#11713

**Class I Hitch:**

**part #11713** \*only I available  
Toyota MR2 Coupe 91-95, Vertical Receiver

Part #	CURT	Price	Qty
11713		\$25.00	



#24586

**part #24586** \*only I available  
Chevy Camaro 93-02

Part #	DRAWTITE	Price	Qty
24586		\$25.00	



#24593

**part #24593** \*only I available  
Dodge & Plymouth Neon 95-99

Part #	DRAWTITE	Price	Qty
24593		\$25.00	



#24689

**part #24689** \*only I available  
Chevy Monte Carlo 00-05

Part #	DRAWTITE	Price	Qty
24689		\$25.00	



#24767

**part #24767** \*only I available  
Cadillac CTS 03-12

Part #	DRAWTITE	Price	Qty
24767		\$50.00	



#24824

**part #24824** \*only I available  
Volkswagon EOS 07-12

Part #	DRAWTITE	Price	Qty
24824		\$50.00	

**Class II Hitch:**

**part #36122** \*only I available  
Chevy Caprice 77-96 and other GM cars

Part #	DRAWTITE	Price	Qty
36122		\$35.00	

**part #36134** \*only I available  
Buick Regal 90-96 and other GM cars

Part #	DRAWTITE	Price	Qty
36134		\$35.00	

**part #36148** \*only I available  
Ford Full Size Van 92-03

Part #	DRAWTITE	Price	Qty
36148		\$50.00	



#36305

**part #36305** \*only I available  
Kia Sedon 02-05

Part #	DRAWTITE	Price	Qty
36305		\$35.00	

**part #36308** \*only I available  
Olds Cutlass Calais 85-89 and other GM cars

Part #	DRAWTITE	Price	Qty
36308		\$25.00	

**part #36408** \*only I available  
Chevy Equinox 05-13, Saturn VUE and other GM vehicles

Part #	DRAWTITE	Price	Qty
36408		\$50.00	

**part #51101** \*only I available  
Ford Taurus, Mercury Sable 00-05

Part #	PRO SERIES	Price	Qty
51101		\$35.00	

**Note:**

\_\_\_\_\_  
\_\_\_\_\_  
\_\_\_\_\_

**THE EXPEDITER**

email: [order@expediter.com](mailto:order@expediter.com)  
tel: 561-863-2220 • 800-330-1800  
fax: 561-863-2250 • 888-330-1888

Company Name	<input type="text"/>	P.O. #	<input type="text"/>
Shipping Address	<input type="text"/>		
City	<input type="text"/>	State	<input type="text"/>
		Zip	<input type="text"/>
Phone #	<input type="text"/>		
Credit Card #	<input type="text"/>	Expires	<input type="text"/>
V-Code	<input type="text"/>	Mailing Zip Code	<input type="text"/>



Call us, or check manufacturers catalogs or websites for additional applications for these part numbers. Ball mounts are **NOT** included with Class III, IV, V and front mount hitches. While supplies last.

**Class III Hitch:**

**part #75023** \*only 2 available  
Toyota 4-Runner 87-92

Part #		Price	Qty
75023		\$25.00	

**part #51026** \*only 1 available  
Ford Aerostar Van Extended Body 86-97

Part #		Price	Qty
51026		\$35.00	


**part #75057** \*only 2 available  
Mitsubishi Montero (not Sport) 92-00

Part #		Price	Qty
75057		\$25.00	


**part #75147** \*only 2 available  
Kia Sorento 03-06

Part #		Price	Qty
75147		\$25.00	

**part #87458** \*only 1 available  
Chevy Colorado, GMC Canyon,  
Isuzu Pickup 04-12

Part #		Price	Qty
87458		\$50.00	

**part #89007** \*only 1 available  
Ford F-250 Super Duty, F-350 Super Duty 99-04

Part #		Price	Qty
89007		\$50.00	

**part #75141** \*only 1 available  
Dodge Caravan & Plymouth Voyager 91-95

Part #		Price	Qty
75141		\$25.00	

**part #75102** \*only 1 available  
Mervury Villager & Nissan Quest 99-02

Part #		Price	Qty
75102		\$25.00	

**part #75111** \*only 1 available  
Mazda MPV 00-03

Part #		Price	Qty
75111		\$25.00	

**Class IV Hitch:**

**part #41547** \*only 1 available  
Ford F-350, F-450, F-550 with 34" Frame


Part #		Price	Qty
41547		\$75.00	

**Class V Hitch:**

**part #45012** \*only 1 available  
Ford F-250 Super Duty, F-350 Super Duty,  
Deep Drop 99-04

Part #		Price	Qty
45012		\$95.00	

**part #81533** \*only 2 available  
Dodge RAM Pick Up 02-05

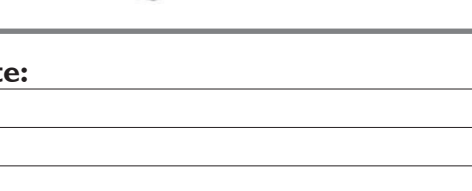
Part #		Price	Qty
81533		\$45.00	

**part #65028** \*only 1 available  
Front Mount Hitch Chevy/GMC Pick Up,  
Suburban and Denali 99-07

Part #		Price	Qty
65028		\$45.00	

**part #65049** \*only 1 available  
Front Mount Hitch Ford F-250SD, F350, F-450,  
F550 08-12

Part #		Price	Qty
65049		\$50.00	



Company Name	<input type="text"/>	P.O. #	<input type="text"/>
Shipping Address	<input type="text"/>		
City	<input type="text"/>	State	<input type="text"/>
		Zip	<input type="text"/>
Phone #	<input type="text"/>		
Credit Card #	<input type="text"/>	Expires	<input type="text"/>
V-Code	<input type="text"/>	Mailing Zip Code	<input type="text"/>

**Note:**  
\_\_\_\_\_  
\_\_\_\_\_  
\_\_\_\_\_

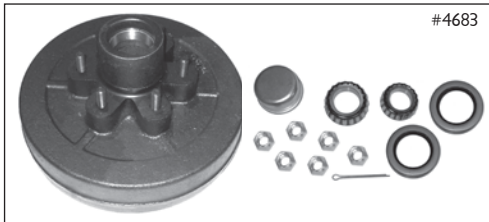
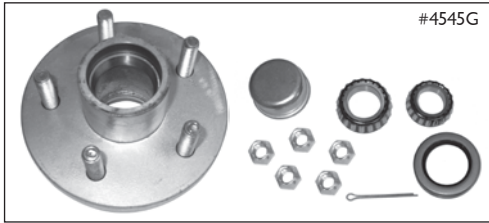
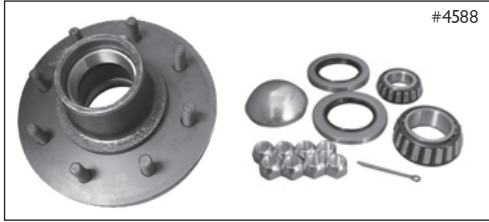
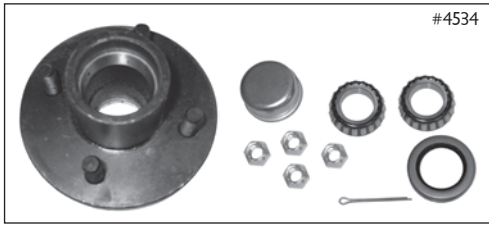
**THE EXPEDITER**

email: [order@expediter.com](mailto:order@expediter.com)  
tel: 561-863-2220 • 800-330-1800  
fax: 561-863-2250 • 888-330-1888

**Ider Hub Assemblies**

(Complete with all bearings, seal, grease cap, nuts and cotter pin)

~ Boxed hubs available for \$1 additional. Add "B" to part number to order boxed hub (eg. 4545B) ~



Part #	Finish	Inner	Bearing	Outer	Seal ID	Bolt Pattern	Price	Qty
4534	Painted	1"	1"	1"	1-1/4"	4 on 4"	\$9.25	
4531	Painted	1-1/16"	1-1/16"	1-1/16"	1-1/4"	4 on 4"	\$9.25	
4536	Painted	1-1/16"	1-1/16"	1-1/16"	1-1/2"	4 on 4"	\$9.25	
4535	Painted	1"	1"	1"	1-1/4"	5 on 4-1/2"	\$9.50	
4532	Painted	1-1/16"	1-1/16"	1-1/16"	1-1/4"	5 on 4-1/2"	\$9.50	
4537	Painted	1-1/16"	1-1/16"	1-1/16"	1-1/2"	5 on 4-1/2"	\$9.50	
4545	Painted	1-3/8"	1-1/16"	1-1/16"	1.72"	5 on 4-1/2"	\$11.50	
4583	Painted	1-3/4"	1-1/4"	1-1/4"	2-1/4" & 2-1/8"	6 on 5-1/2"	\$17.95	
4588	Painted	1-3/4"	1-1/4"	1-1/4"	2-1/4" & 2-1/8"	8 on 6-1/2"	\$20.75	
4534G	Galv.	1"	1"	1"	1-1/4"	4 on 4"	\$10.75	
4531G	Galv.	1-1/16"	1-1/16"	1-1/16"	1-1/4"	4 on 4"	\$10.75	
4536G	Galv.	1-1/16"	1-1/16"	1-1/16"	1-1/2"	4 on 4"	\$10.75	
4535G	Galv.	1"	1"	1"	1-1/4"	5 on 4-1/2"	\$10.95	
4532G	Galv.	1-1/16"	1-1/16"	1-1/16"	1-1/4"	5 on 4-1/2"	\$10.95	
4537G	Galv.	1-1/16"	1-1/16"	1-1/16"	1-1/2"	5 on 4-1/2"	\$10.95	
4545G	Galv.	1-3/8"	1-1/16"	1-1/16"	1.72"	5 on 4-1/2"	\$13.25	
4583G	Galv.	1-3/4"	1-1/4"	1-1/4"	2-1/4" & 2-1/8"	6 on 5-1/2"	\$22.95	

**Hub & Drum Assemblies**

(Complete with all bearings, seal, grease cap, nuts and cotter pin) ~ Hub & Drum not available boxed ~

Part #	Size	Finish	Inner	Outer	Seal ID	Bolt Pattern	Price	Qty
4645	10"	Painted	1-3/8"	1-1/16"	1.72"	5 on 4-1/2"	\$25.00	
4683	12"	Painted	1-3/4"	1-1/4"	2-1/4" & 2-1/8"	6 on 5-1/2"	\$39.00	
4688	12"	Painted	1-3/4"	1-1/4"	2-1/4" & 2-1/8"	8 on 6-1/2"	\$44.00	

**Bearing Protectors**

**part #81980-100**

1.980 Bearing protectors; Chrome; Bulk pack 100 pieces. Includes bras.

**part #82441-48**

2.441 Bearing protectors; Chrome; Bulk pack 48 pieces. Includes bras.



Part #	Price (per case)	Qty
81980-100	\$286.00	
82441-48	\$264.00	

**part #46750-100**

**Grease Seal**

1.980" OD for 1.25" shaft. Single lip. Used with 1" and 1-1/16" bearings. Bulk pack 100 pieces.



Part #	Price	Qty
46750-100	\$20.00	

**part #I4113**

**Spring Seat**

Galvanized spring seat for 2x2 or 2x3 axle tube. No welding required.



Part #	Price	Qty
I4113	\$1.75	

**Note:**

Company Name  P.O. #

Shipping Address

City  State  Zip

Phone #

Credit Card #  Expires

V-Code  Mailing Zip Code

**THE EXPEDITER**

email: order@expediter.com  
 tel: 561-863-2220 • 800-330-1800  
 fax: 561-863-2250 • 888-330-1888

**part #81117-2A**

**G5 Stainless Steel Disc Brake Kit**

Includes 2 each GalvX hub with stainless steel rotor, one piece aluminum caliper with pads, galvanized bracket, and bearings. 3500#, 5 lug.



Part #	Price	Qty
81117-2A	\$256.00	

**part #81118-2A**

**G5 Stainless Steel Disc Brake Kit**

Includes 2 each GalvX hub with stainless steel rotor, one piece aluminum caliper with pads, galvanized bracket, and bearings. 6000# 6 lug.

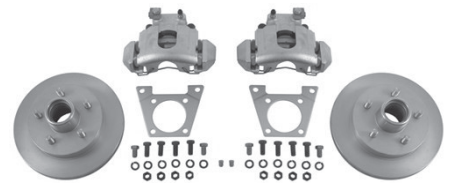


Part #	Price	Qty
81118-2A	\$335.00	

**part #4841400-A**

**Vented Disc Brake Kit**

Includes 2 each vented integral hub/rotor, caliper with pads, bracket, and bearings. For 3500# 5 lug applications. Dacromet finish for marine applications.



Part #	Price	Qty
4841400-A	\$169.00	

**part #46501-2A**

**Eliminator Vented Disc Brake Kit**

Includes 2 each vented GalvX integral hub/rotor, one piece aluminum caliper with pads, galvanized bracket, and bearings. 3500#, 5 lug



Part #	Price	Qty
46501-2A	\$175.00	

**part #46452-2A**

**Eliminator Vented Disc Brake Kit**

Includes 2 each vented GalvX integral hub/rotor, one piece aluminum caliper with pads, galvanized bracket, and bearings. 6000#, 6 lug

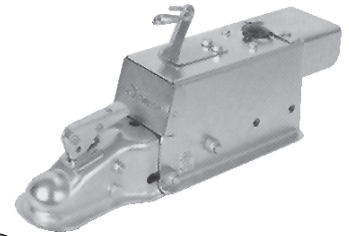


Part #	Price	Qty
46452-2A	\$230.00	

**part #8605101**

**Disc Brake Actuator**

#DA66B, Zinc plated, lever lock coupler for 2" ball. Includes factory installed solenoid kit. 6,000 lb. G.V.W.R.

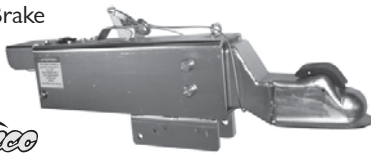


Part #	Price	Qty
8605101	\$125.00	

**part #123026**

**Hydraulic Actuator**

- 16K Capacity
- 2-5/16" Drop Coupler
- Low Profile Latch
- Solenoid and Cover installed
- Auto Lock
- Bolt-on
- Zinc
- Disc Brake

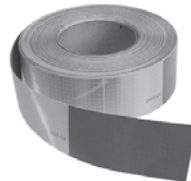


Part #	Price	Qty
8164311	\$245.00	

**part #2740**

**Reflective Tape**

Highly Reflective Conspicuity Tape. 2" x 150' Roll. 6" Red & 6" White (Silver). Kiss cut in 12" lengths. Aggressive, Permanent Adhesive. Mfg's #687RS



Part #2740	Price	Qty
Qty 1-9	\$59.00	
Qty 10+	\$49.00	

**part #2703**

**Reflective Tape**

2" x 150' Roll. 11" Red & 7" White (Silver) Highly Reflective Conspicuity Tape. Aggressive, Permanent Adhesive.



Part #2703	Price	Qty
Qty 1-9	\$59.00	
Qty 10+	\$49.00	

Company Name  P.O. #

Shipping Address

City  State  Zip

Phone #

Credit Card #  Expires

V-Code  Mailing Zip Code

**Note:**

\_\_\_\_\_

\_\_\_\_\_

\_\_\_\_\_

**THE EXPEDITER**

email: [order@expediter.com](mailto:order@expediter.com)  
 tel: 561-863-2220 • 800-330-1800  
 fax: 561-863-2250 • 888-330-1888



#39421  
#39420



#39424



#39427



#39428



#39430

**Titan BrakeRite Electric/Hydraulic Actuators. Provide hydraulic brake pressure activated by in cab electric brake controller:**

**part #39421**

Titan #4822500 BrakeRite EHB.1000 psi drum brake applications. Designed to be hard wired to your trailer's electrical system. All components self-contained inside the unit. Requires adapter module #4846000 when used with 2006.5 and later Ford and Chevy factory brake control (Not included).

Part #	Price	Qty
39421	\$516.00	

**part #39420**

Titan #4813100 BrakeRite EHB.1500 psi disc brake applications. Designed to be hard wired to your trailer's electrical system. All components self-contained inside the unit. Requires adapter module #4846000 when used with 2006.5 and later Ford and Chevy factory brake control (Not included).

Part #	Price	Qty
39420	\$516.00	

**part #39424**

Titan #4835700 BrakeRite II SD kit. For severe duty disc or drum brake applications. Electronic control board sealed in weatherproof module with plug-in weather sealed connectors. Includes 7-way RV plug-in harness, breakaway switch and battery harness.

Part #	Price	Qty
39424	\$672.00	

**part #39427**

Titan #4835600 BrakeRite II RF kit. For severe duty disc or drum brake applications without a preinstalled electric brake control in the tow vehicle. Electronic control board and accelerometer sealed in weatherproof module with plug-in weather sealed connectors provided proportional braking. Includes 4-way flat plug-in harness, breakaway switch and battery harness. In-cab radio frequency transmitter/controller plugs into cigarette lighter.

Part #	Price	Qty
39427	\$800.00	

**part #39428**

Titan #4813102PP BrakeRite plug and play kit. Disc or drum brake applications. \*DRUM BRAKE APPLICATION REQUIRES REDUCER #4844100 (NOT INCLUDED). Electronic control board sealed inside the unit with plug-in weather sealed connectors. Includes 7-way RV plug-in harness, breakaway switch and battery harness.

Part #	Price	Qty
39428	\$670.00	

**part #39430**

Titan #4813102A BrakeRite plug and play kit with Australian style 12-pin connector. Disc or drum brake applications. \*DRUM BRAKE APPLICATION REQUIRES REDUCER #4844100 (NOT INCLUDED). Electronic control board sealed inside the unit with plug-in weather sealed connectors. Includes 12-pin Australian plug-in harness and battery harness.

Part #	Price	Qty
39430	\$683.00	

**Note:**

\_\_\_\_\_  
\_\_\_\_\_  
\_\_\_\_\_

**THE EXPEDITER**

email: [order@expediter.com](mailto:order@expediter.com)  
tel: 561-863-2220 • 800-330-1800  
fax: 561-863-2250 • 888-330-1888

Company Name	<input type="text"/>	P.O. #	<input type="text"/>
Shipping Address	<input type="text"/>		
City	<input type="text"/>	State	<input type="text"/>
		Zip	<input type="text"/>
Phone #	<input type="text"/>		
Credit Card #	<input type="text"/>	Expires	<input type="text"/>
V-Code	<input type="text"/>	Mailing Zip Code	<input type="text"/>



**part #I40040**

**Pipe-Mount Swivel Jack**

Painted Finish; Round Tube  
Capacity: 2,000 lbs  
Wind: Top  
Base: Foot  
Travel: 10"  
Measurements:  
11.00" (retracted)  
21.00" (extended)  
4.00" (clearance)



Part #	Price	Qty
I40040	\$12.50	

**part #I40120**

**Pipe-Mount Swivel Jack**

Painted Finish; Round Tube  
Capacity: 2,000 lbs  
Wind: Top  
Base: Foot  
Travel: 15"  
Measurements:  
14.50" (retracted)  
29.50" (extended)  
10.00" (clearance)  
Tube Diameter:  
2.00" (inner) 2.25" (outer)



Part #	Price	Qty
I40120	\$20.65	

**part #I40114**

**Weld-on Swivel Jack**

Painted Finish; Round Tube  
Capacity: 2,000 lbs  
Wind: Top  
Base: Foot  
Travel: 10"  
Measurements:  
11.00" (retracted)  
21.00" (extended)  
4.00" (clearance)  
Tube Diameter:  
2.00" (inner) 2.25" (outer)



Part #	Price	Qty
I40114	\$13.50	

**part #I40106**

**Pipe-Mount Swivel Jack**

Painted Finish; Weld-on  
Capacity: 2,000 lbs  
Wind: Side  
Base: Foot  
Travel: 10"  
Measurements:  
11.20" (retracted)  
21.20" (extended)  
5.45" (clearance)  
Tube Diameter:  
2.00" (inner) 2.25" (outer)  
\*\*Note: Weld-on with 9/16" pin.  
Male mating mount included.\*\*



Part #	Price	Qty
I40106	\$17.50	

**part #I40102**

**Weld-on Swivel Jack**

Capacity: 2,000 lbs  
Wind: Side  
Base: Foot  
Travel: 10"  
Measurements:  
10.40" (retracted)  
20.40" (extended)  
6.29" (clearance)  
Tube Diameter:  
2.00" (inner) 2.25" (outer)  
\*\*Note: 3/8" pin\*\*



Part #	Price	Qty
I40102	\$16.75	

**part #I40146**

**Pipe-Mount Swivel Jack**

Painted Finish; Round Tube  
Capacity: 5,000 lbs  
Wind: Top  
Base: Foot  
Travel: 10"  
Measurements:  
11.20" (retracted)  
21.20" (extended)  
4.00" (clearance)  
Tube Diameter:  
2.00" (inner) 2.25" (outer)



Part #	Price	Qty
I40146	\$14.50	

**part #I40148**

**Pipe-Mount Swivel Jack**

Painted Finish; Round Tube  
Capacity: 5,000 lbs  
Wind: Top  
Base: Foot  
Travel: 15"  
Measurements:  
14.70" (retracted)  
29.70" (extended)  
10.00" (clearance)  
Tube Diameter:  
2.00" (inner) 2.25" (outer)  
\*\*Note: 3/8" pin\*\*



Part #	Price	Qty
I40148	\$17.25	

**part #I40060**

**A-Frame Jack**

A-Frame; Painted Finish; Round Tube;  
Weld-on or Bolt on  
Capacity: 5,000 lbs  
Wind: Top  
Travel: 15"  
Measurements:  
10.80" (retracted)  
25.80" (extended)  
14.50" (clearance)  
Tube Diameter:  
2.00" (inner) 2.25" (outer)



Part #	Price	Qty
I40060	\$12.50	

**part #RV2000**

**A-Frame Jack**

A-Frame; Painted Finish; Round Tube;  
Weld-on or Bolt on  
Capacity: 2,000 lbs  
Wind: Side  
Travel: 14"  
Measurements:  
9.00" (retracted)  
23.00" (extended)  
13" (clearance)  
Tube Diameter:  
2.00" (inner) 2.25" (outer)



Part #	Price	Qty
RV2000	\$15.00	

Company Name  P.O. #

Shipping Address

City  State  Zip

Phone #

Credit Card #  Expires

V-Code  Mailing Zip Code

**Note:**

\_\_\_\_\_

\_\_\_\_\_

\_\_\_\_\_

**THE EXPEDITER**

email: [order@expediter.com](mailto:order@expediter.com)  
tel: 561-863-2220 • 800-330-1800  
fax: 561-863-2250 • 888-330-1888

**part #90885**

**Brake Control (Prodigy P2)**

- Multiple Mounting Options - Including 360 degree vertical rotation
- Designed to work with Electric over Hydraulic Brake Systems
- Lifetime Warranty
- Made for up to four-axle trailer brake systems
- Includes universal wire harness to connect to tow package



Part #	Price	Qty
90885	\$105.00	

**part #90195**

**Brake Control (P3)**

- Distinct, easy to see LCD display
- Switch between Electric and Electric Over Hydraulic trailer brakes
- Allows for different levels of customized braking
- Unique, easy-to-use, clip-mounting system
- Easy access, "Up-Front" controls
- Limited Lifetime Warranty



Part #	Price	Qty
90195	\$120.00	

**part #9030**

**Brake Control (Voyager)**

Voyager® - Proportional Brake Control  
1 to 3 Axle Systems



Part #	Price	Qty
9030	\$55.75	

**part #90160**

**Brake Control (Primus IQ)**

- Utilizes "Plug-N-Play" port for 2-plug adapters
- Self-diagnostics features will illuminate LED readout when issues occur
- Includes a "Boost" feature
- Works proportionally in reverse
- Snap-in dash mounting clip & hardware included
- Digital LED readout
- Limited Lifetime Warranty



Part #	Price	Qty
90160	\$69.00	

**part #80550**

**Brake Control (Pilot)**

- 1 - 3 axle trailers.
- Large easy-to-read dual digital display shows:
  - Properly wired control
  - Voltage output to brakes
- Dark smoke lens ideal for direct light applications; performs better than red lens.
- Protection against short circuit and loss of ground.
- Limited Lifetime Warranty



Part #	Price	Qty
80550	\$38.75	

**part #5100**

**Brake Control (Activator)**

1 & 2 Axle Trailers; Illuminated L.E.D. Output Indicator Slide Adjustment Output Control; Three Year Limited Warranty.



Part #	Price	Qty
5100	\$32.00	

**part #5500**

**Brake Control (Activator II)**

1 to 4 Axle Trailers; Digital Output Indicator; Thumb Wheel Output Adjustment Overload Indicator; Limited Lifetime Warranty.



Part #	Price	Qty
5500	\$48.50	

**part #5520**

**Brake Control (Activator III)**

1 to 4 Axle Trailers; Overload indicator; Digital output indicator; "Up-front" manual over-ride control; "Kwik-Release" port matches Prodigy style wiring adapters; Front display allows viewing at almost any angle; Mounts in any position; No leveling required; Mounting hardware included; Wiring harness is NOT included. Limited Lifetime Warranty.



Part #	Price	Qty
5520	\$53.00	

**part #96528**

**Round Tube Axle Assembly**

Galvanized Round Tube Axle Assembly, 3.5K 96.5" Hub Face, 76.25" Spring Center, Straight, Flanged, Galvanized 5-4.5" Bolt Pattern Idler Hubs.



**AXIS**

Part #	Price	Qty
96528	\$115.35	

**Note:**

\_\_\_\_\_  
\_\_\_\_\_  
\_\_\_\_\_

Company Name	<input type="text"/>	P.O. #	<input type="text"/>
Shipping Address	<input type="text"/>		
City	<input type="text"/>	State	<input type="text"/>
		Zip	<input type="text"/>
Phone #	<input type="text"/>		
Credit Card #	<input type="text"/>	Expires	<input type="text"/>
V-Code	<input type="text"/>	Mailing Zip Code	<input type="text"/>

**THE EXPEDITER**

email: [order@expediter.com](mailto:order@expediter.com)  
tel: 561-863-2220 • 800-330-1800  
fax: 561-863-2250 • 888-330-1888

**part #35S7358EZ**

**Round Tube Axle Beam**

Painted Round Tube Axle Beam ONLY, 3.5K 73" Hub Face, 58" Spring Center, Straight, Flanged, EZ-Lube Type Spindle.



**AXIS**

Part #	Price	Qty
35S7358EZ	\$69.89	

**part #35S7358I545EZ**

**Round Tube Axle Assembly**

Painted Round Tube Axle Assembly, 3.5K 73" Hub Face, 58" Spring Center, Straight, Flanged, 5-4.5" Bolt Pattern Idler Hubs, EZ-Lube Type Spindle.



**AXIS**

Part #	Price	Qty
35S7358I545EZ	\$85.15	

**part #35S8974EZ**

**Round Tube Axle Beam**

Painted Round Tube Axle Beam ONLY, 3.5K 89" Hub Face, 74" Spring Center, Straight, Flanged, EZ-Lube Type Spindle.



**AXIS**

Part #	Price	Qty
35S8974EZ	\$69.89	

**part #35S8974I545EZ**

**Round Tube Axle Assembly**

Painted Round Tube Axle Assembly, 3.5K 89" Hub Face, 74" Spring Center, Straight, Flanged, 5-4.5" Bolt Pattern Idler Hubs, EZ-Lube Type Spindle.



**AXIS**

Part #	Price	Qty
35S8974I545EZ	\$85.15	

**part #35S9580I545EZ**

**Round Tube Axle Assembly**

Painted Round Tube Axle Assembly, 3.5K 95" Hub Face, 80" Spring Center, Straight, Flanged, 5-4.5" Bolt Pattern Idler Hubs, EZ-Lube Type Spindle.



**AXIS**

Part #	Price	Qty
35S9580I545EZ	\$85.15	

**part #35TG847025DV**

**Torsion Axle Beam**

Galvanized Torsion Axle Beam ONLY, 3500#, 84" Hub Face, 70" Outside Bracket, 25 Degree Down Angle, V-Bend, EZ-Lube Type Spindle.



(Hubs are not included)

**AXIS**

Part #	Price	Qty
35TG847025DV	\$169.00	

**part #35TG847225DV**

**Torsion Axle Beam**

Galvanized Torsion Axle Beam ONLY, 3500#, 84" Hub Face, 72" Outside Bracket, 25 Degree Down Angle, V-Bend, EZ-Lube Type Spindle.



(Hubs are not included)

**AXIS**

Part #	Price	Qty
35TG847225DV	\$169.00	

**part #35TG867225DV**

**Torsion Axle Beam**

Galvanized Torsion Axle Beam ONLY, 3500#, 86" Hub Face, 72" Outside Bracket, 25 Degree Down Angle, V-Bend, EZ-Lube Type Spindle.



(Hubs are not included)

**AXIS**

Part #	Price	Qty
35TG867225DV	\$169.00	

**part #35TG938032DV**

**Torsion Axle Beam**

Galvanized Torsion Axle Beam ONLY, 3500#, 93" Hub Face, 80" Outside Bracket, 32 Degree Down Angle, V-Bend, EZ-Lube Type Spindle.



(Hubs are not included)

**AXIS**

Part #	Price	Qty
35TG938032DV	\$169.00	

Company Name	<input type="text"/>	P.O. #	<input type="text"/>
Shipping Address	<input type="text"/>		
City	<input type="text"/>	State	<input type="text"/>
		Zip	<input type="text"/>
Phone #	<input type="text"/>		
Credit Card #	<input type="text"/>	Expires	<input type="text"/>
V-Code	<input type="text"/>	Mailing Zip Code	<input type="text"/>

**Note:**

---



---



---

**THE EXPEDITER**

email: [order@expediter.com](mailto:order@expediter.com)  
 tel: 561-863-2220 • 800-330-1800  
 fax: 561-863-2250 • 888-330-1888

**part #35TG938032DV15**

**Torsion Axle Assembly**

Galvanized Torsion Axle Assembly 3500#, 93" Hub Face, 80" Outside Bracket, 32 Degree Down Angle, EZ-Lube Type Spindle, Galvanized 5-4.50" Bolt Pattern Idler Hubs.



**AXIS**

Part #	Price	Qty
35TG938032DV15	\$210.00	

**part #52T95800UE655**

**Torsion Axle Assembly**

Painted Torsion Axle Assembly 5200#, 95" Hub Face, 80" Outside Bracket, 0 Angle, EZ-Lube Type Spindle, 6-5.50" Bolt Pattern, 12" Electric Brakes.



**AXIS**

Part #	Price	Qty
52T95800UE655	\$356.00	

**part #52TG1038622U**

**Torsion Axle Beam**

Galvanized Torsion Axle Beam ONLY, 5200#, 103" Hub Face, 86" Outside Bracket, 22 Up Angle, EZ-Lube Type Spindle.



(Hubs are not included)

**AXIS**

Part #	Price	Qty
52TG1038622U	\$150.00	

**part #52TG98.58222U**

**Torsion Axle Beam**

Galvanized Torsion Axle Beam ONLY, 5200#, 98.5" Hub Face, 82 " Outside Bracket, 22 Up Angle, EZ-Lube Type Spindle.



(Hubs are not included)

**AXIS**

Part #	Price	Qty
52TG98.58222U	\$150.00	

**art #60TG877222DV16**

**Torsion Axle Assembly**

Galvanized Torsion Axle Assembly 6000#, 87" Hub Face, 72" Outside Bracket, 22 Degree Down Angle, V-Bend, EZ-Lube Type Spindle, Galvanized 6-5.50" Bolt Pattern Idler Hubs.



**AXIS**

Part #	Price	Qty
60TG877222DV16	\$275.00	

**part #70TG958032DV**

**Torsion Axle Beam**

Galvanized Torsion Axle Beam ONLY, 7000#, 95" Hub Face, 80" Outside Bracket, 32 Degree Down Angle, V-Bend, EZ-Lube Type Spindle.



(Hubs are not included)

**AXIS**

Part #	Price	Qty
70TG958032DV	\$275.00	



**Note:**

\_\_\_\_\_  
 \_\_\_\_\_  
 \_\_\_\_\_

Company Name	<input type="text"/>	P.O. #	<input type="text"/>
Shipping Address	<input type="text"/>		
City	<input type="text"/>	State	<input type="text"/>
		Zip	<input type="text"/>
Phone #	<input type="text"/>		
Credit Card #	<input type="text"/>	Expires	<input type="text"/>
V-Code	<input type="text"/>	Mailing Zip Code	<input type="text"/>

**THE EXPEDITER**

email: [order@expediter.com](mailto:order@expediter.com)  
 tel: 561-863-2220 • 800-330-1800  
 fax: 561-863-2250 • 888-330-1888